



Florida Freight Advisory Committee Meeting

August 8, 2022



**FREIGHT
& RAIL**

Call to Order



Roll Call

John Abrams
*Loves Travel
Stops*

Joe Arbona
*Genesee Wyoming
Railroad*

Aubrey Brown
CSX

William Crowe
*Canaveral Port
Authority*

Jaha Cummings
*City of
Punta Gorda*

Kevin Daugherty
*Space Coast Regional
Airport*

Laura DiBella
*Florida Harbor
Pilots Association*

John Dohm
*Florida TransAtlantic
Holdings*

Lauren Farrell
*Space
Florida*

Patrick Feeney
*Kenan Advantage
Group*

Bruce Lyon
*Winter Haven Economic
Development Council*

Terri Malone
*Escambia
County*

Robert Midgett
Walmart

Carol Obermeier
*Southwest Florida International
Airport (RSW)*

Seckin Ozkul
*University of South
Florida (USF)*

Samuel Pearson
UPS

Nick Primrose
*Jacksonville Port Authority
(JAXPORT)*

Mike Rubin
Florida Ports Council

Tori Rumenik
*Florida Fruit and
Vegetable Association*

Gregory Stuart
*Broward Metropolitan
Planning Organization*

Alexander Trauger
*MetroPlan
Orlando*

Kevin Walford
*Miami-Dade Transportation
Planning Organization*

Desiree Ann Wood
*REAL Women
in Trucking, Inc.*



**FREIGHT
& RAIL**



Agenda



Welcome



Setting the Stage



Station Activity



Alternative Solutions/Scenario Development



Alternative Solutions Presentations



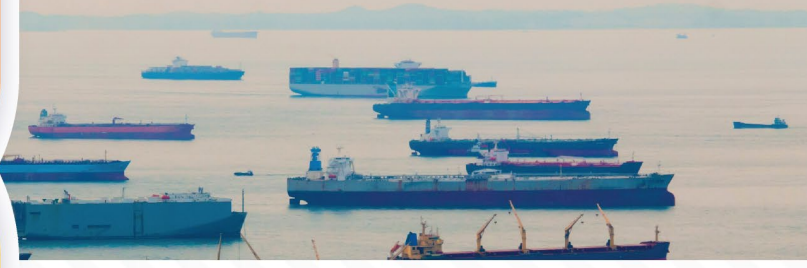
Public Comments & Member Comments



Adjourn



**STRATEGIC
DEVELOPMENT**

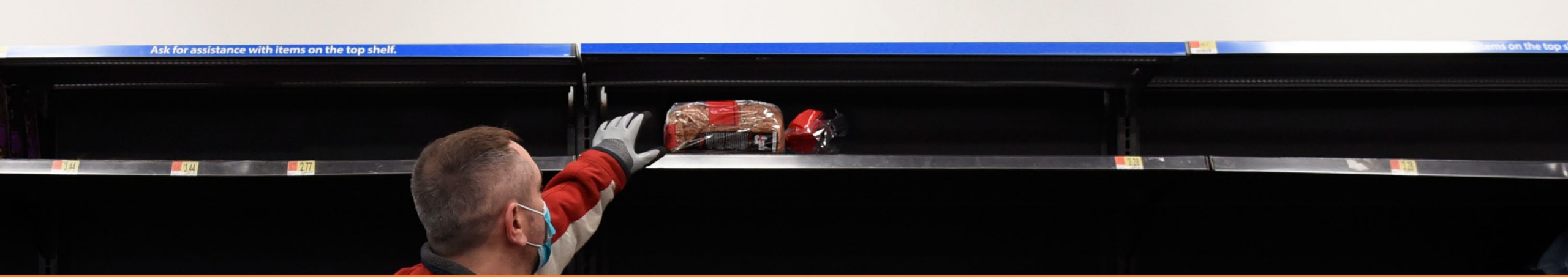


August 8, 2022

Supply Chain Strategy



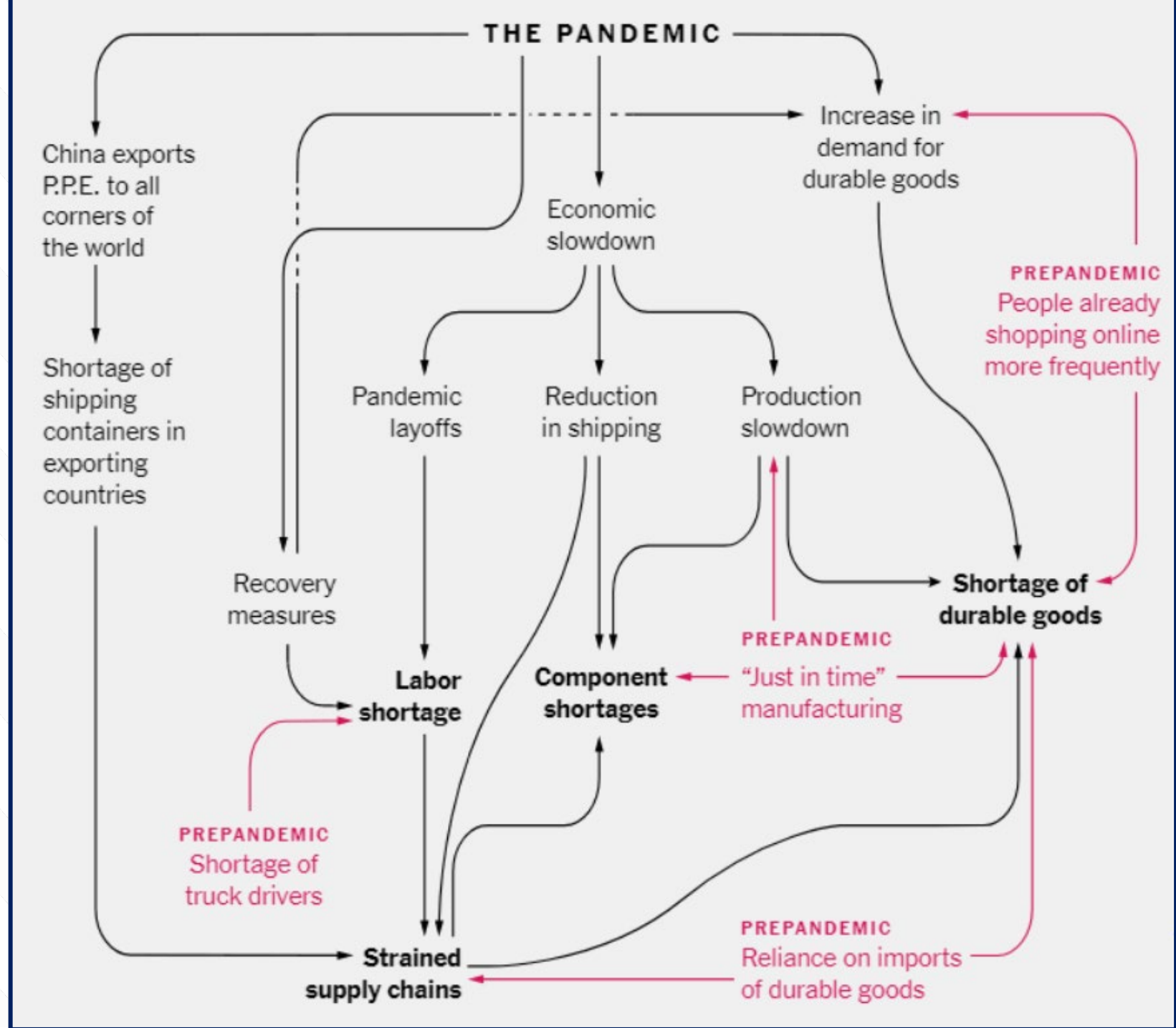




What is causing the crisis?

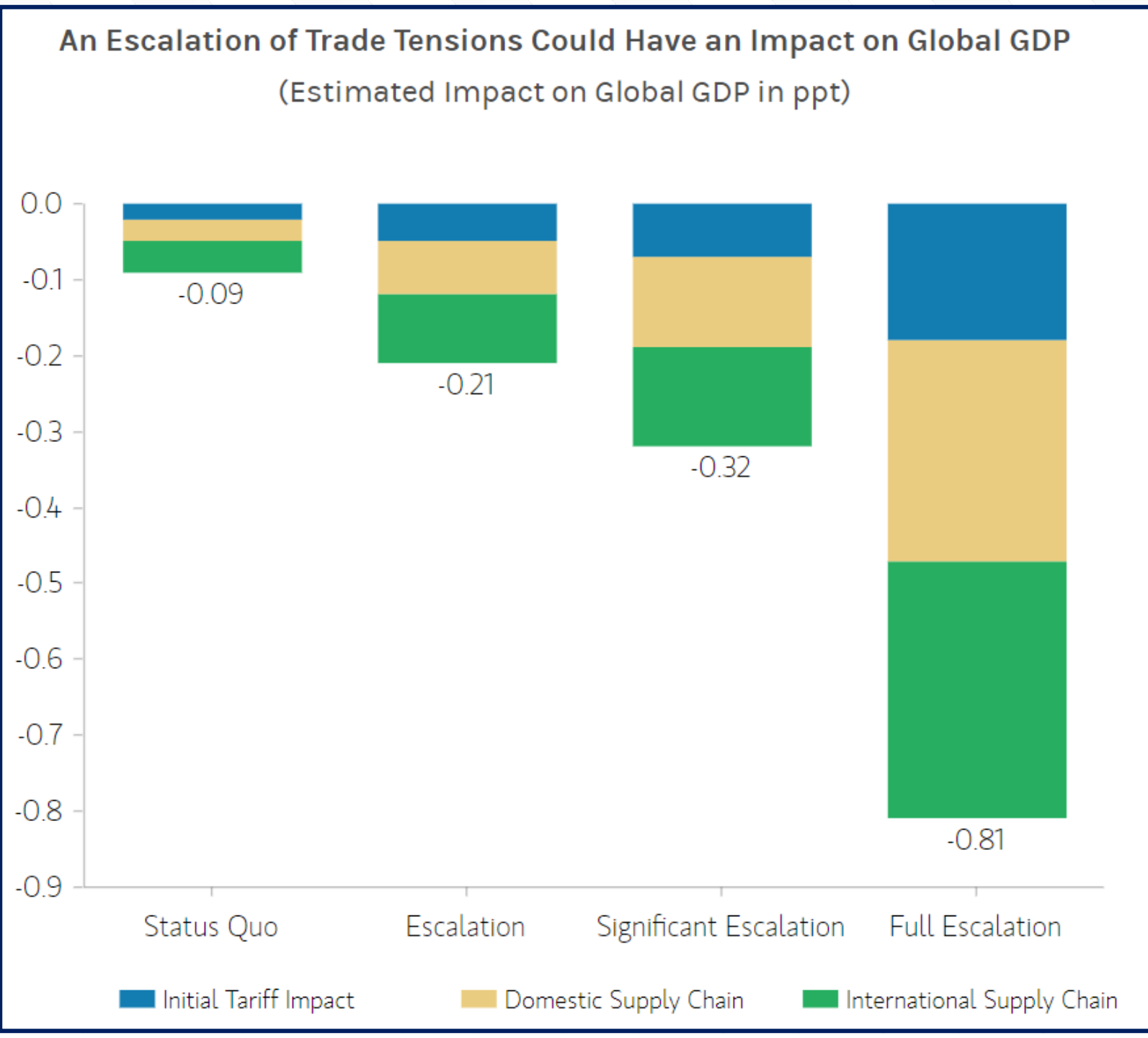


COVID-19 Disruption



International Trade

GDP Growth (Percentage Points)



Evolving & Shifting Trade Lines



Reshoring



Climate Impacts

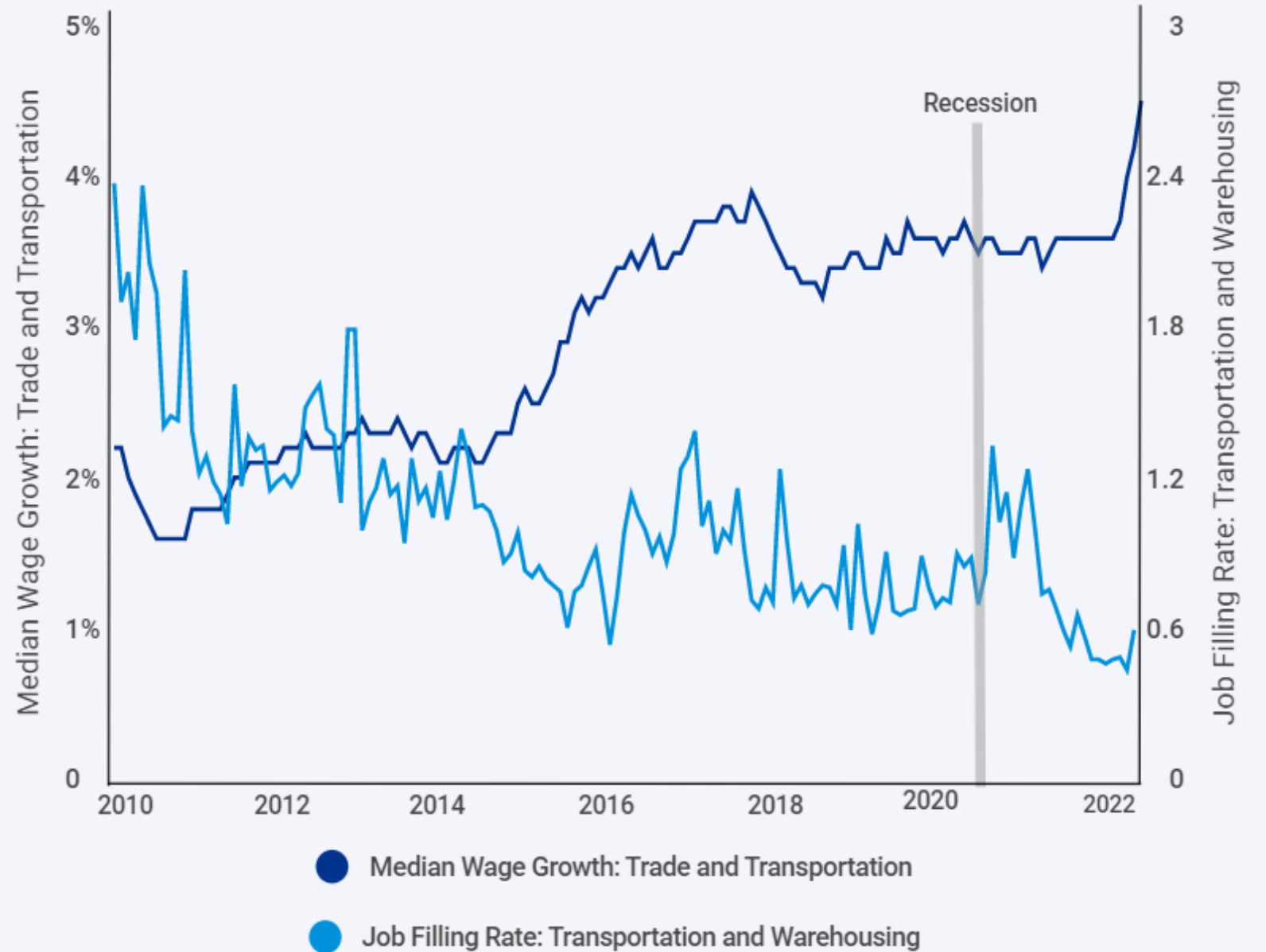


Ukraine War



Labor Shortages

Wages are up while jobs are hard to fill in transportation and logistics

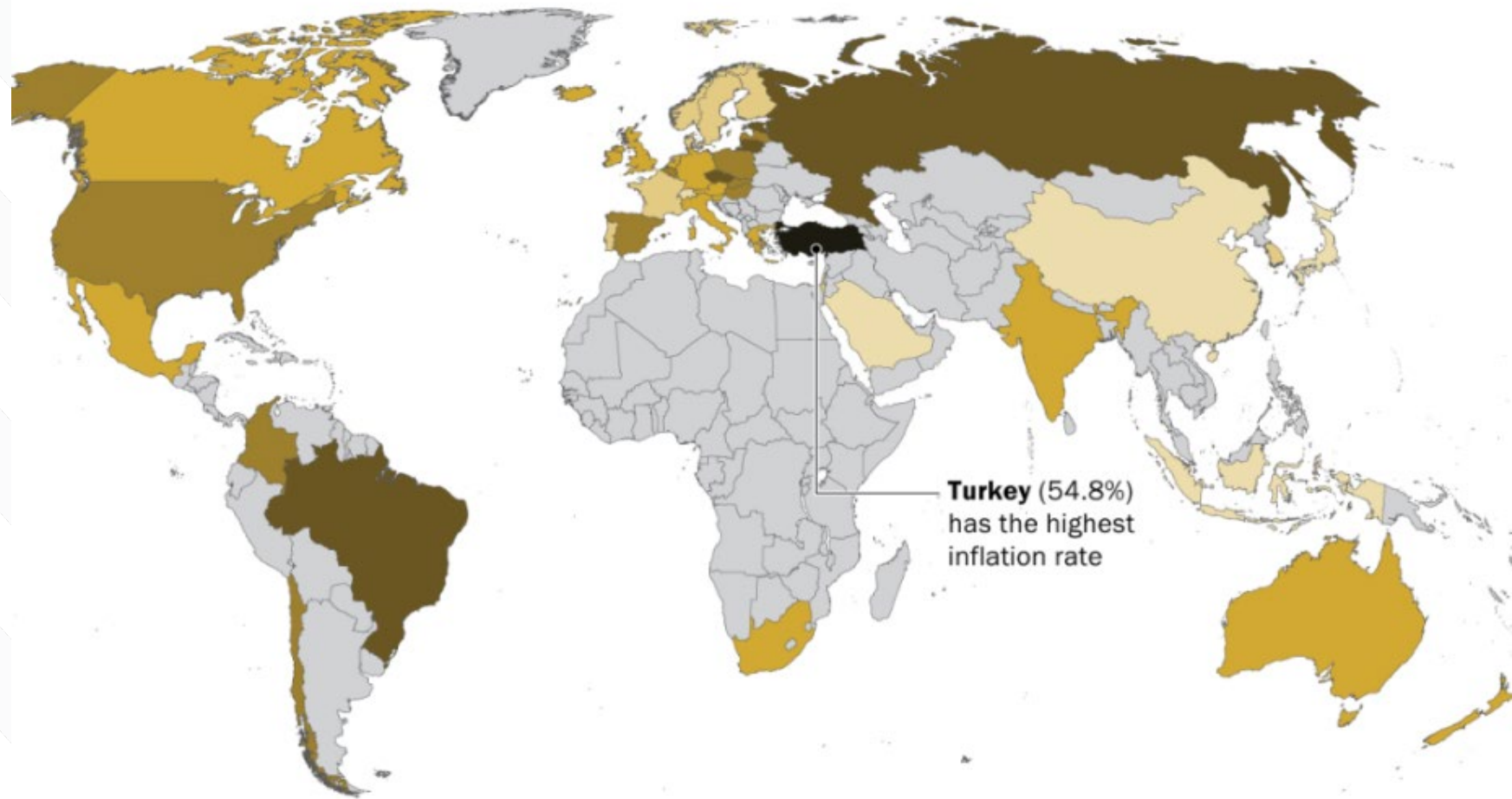


Source: KPMG Economics, Bureau of Labor Statistics, Federal Reserve Bank of Atlanta, Haver Analytics (February 2022).

Inflation

Where inflation is highest and lowest across 44 countries

Annual inflation rate, first quarter 2022



Note: Chart includes 37 of 38 member nations of the Organization for Economic Cooperation and Development (OECD) and seven other economically significant countries for which the OECD provides data.

Source: Pew Research analysis of OECD data.

Cyberattacks





What impacts are we seeing?



Increased Delays

Record Level # of Vessels Waiting to Enter L.A.-Long Beach Ports

Total Container Vessel Backup, 7-day Moving Average

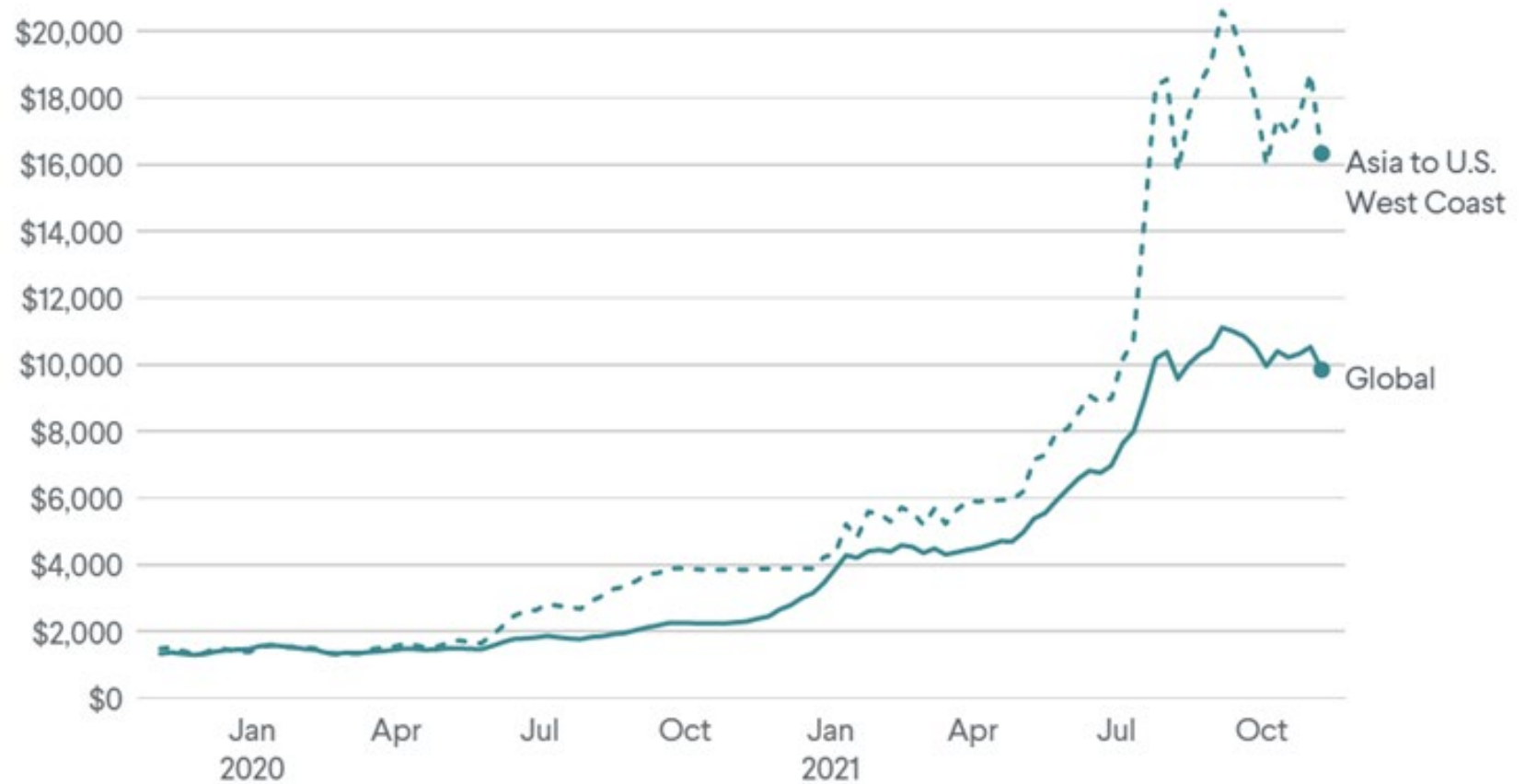


Source: KPMG Economics, Marine Exchange of Southern California & Vessel Traffic Service L.A./Long Beach (April 12, 2022), Haver Analytics.

Deteriorated Quality of Life

Global Shipping Costs Surged in 2021

Market rates for forty-foot shipping containers



Note: Data is from the Freightos Baltic Index.

Source: Freightos.com.

Stress on Businesses and the Economy

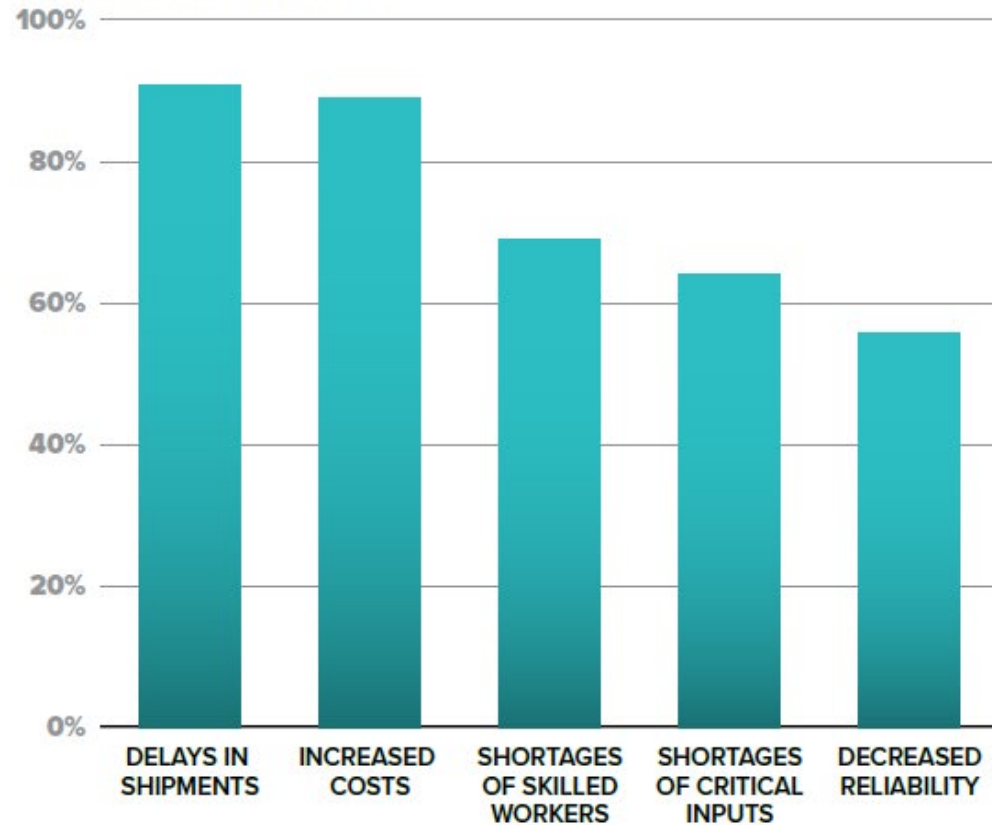


3 *OUT OF* **4** FLORIDA BUSINESSES EXPERIENCED
SUPPLY CHAIN DISRUPTIONS
IN LATE 2021



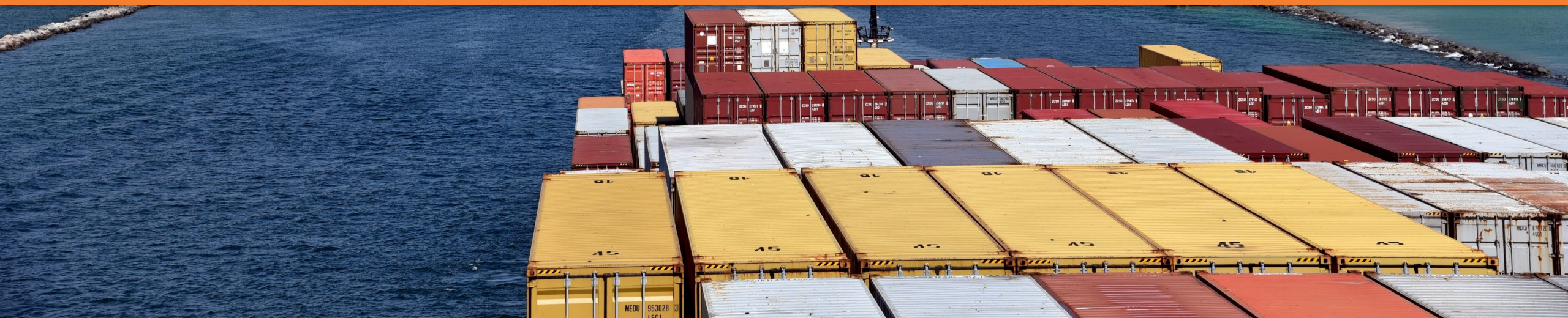
WHAT TYPES OF SUPPLY CHAIN DISRUPTIONS OR SHORTAGES IS YOUR COMPANY EXPERIENCING?

PERCENT OF RESPONDENTS





Opportunities for Florida



Opportunities for Florida



MOVE

Move more freight and goods to meet business and consumer demand efficiently and reliably

MAKE

Make more high-value goods for consumers and businesses in Florida, the Southeastern United States, Latin America, the Caribbean, and beyond

MULTIPLY

Multiply the impacts of trade, logistics, and manufacturing jobs throughout Florida's economy

Seizing Opportunities



Source: The Center Square, Mar 5, 2022

Key Strategies



1

Reaffirm the statewide priority for trade, logistics, and manufacturing

2

Establish a statewide manufacturing initiative

3

Close essential workforce gaps and strengthen the talent pipeline

4

Continue to strengthen trade gateways and corridors

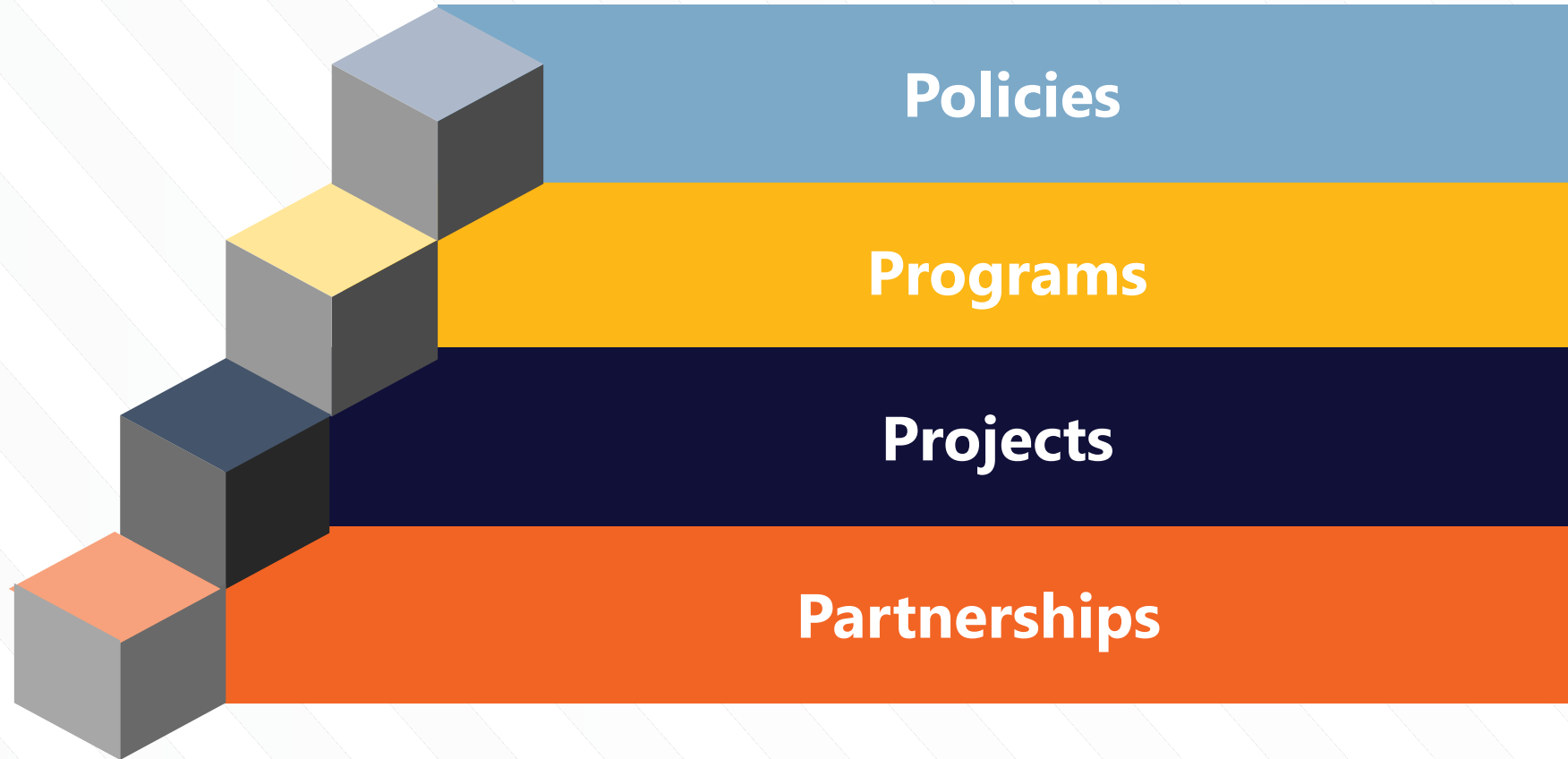
5

Establish a comprehensive site development program with emphasis on rural areas

6

Redesign Florida's economic development toolkit

Strategic Framework





Example Ideas

- Increase priority for trade, logistics, and manufacturing for workforce development
- Address the truck driver shortage
- Enhance trade at ports
- Decarbonize the supply chain



Programs



Example Ideas

- Establish an inland port authority
- Facilitate data sharing between public and private sector for monitoring supply chain visibility and security





Example Ideas

- Invest in capacity at seaports and inland port facilities
- Preserve corridors and enhance rail access
- Increase number of loading dock doors to decrease detention times
- Accelerate intermodal investments



Partnerships



Example Ideas

- Streamline federal and statewide processes
- Launch marketing campaign to promote Florida's seaports, transportation, and logistics industries
- Support workforce development
- Develop incentives to support private sector investments





Station Activity

Station Activity



Break into small groups



Rotate through 4 stations (4 Ps)



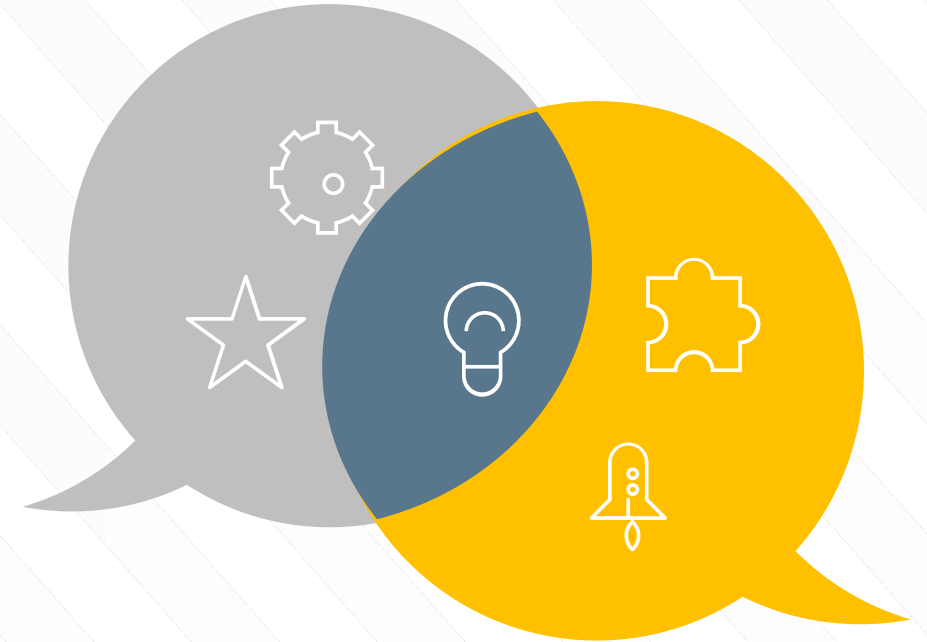
Have facilitated conversations at each station



Develop solutions with small group



Present solutions to full team



The image features a large stack of shipping containers in various colors (blue, red, white, and teal) in a port setting. A stylized chain link graphic, composed of dark blue, yellow, and orange segments, is positioned in the lower right foreground. The background is a white and blue diagonal striped pattern.

Alternative Solutions/Scenario Development

The image features a large stack of shipping containers in various colors (blue, red, white, teal) in a port setting. A stylized chain link graphic, composed of dark blue, yellow, and orange segments, is positioned in the lower right foreground. The background is a white area with diagonal lines.

Alternative Solutions Presentations



**STRATEGIC
DEVELOPMENT**

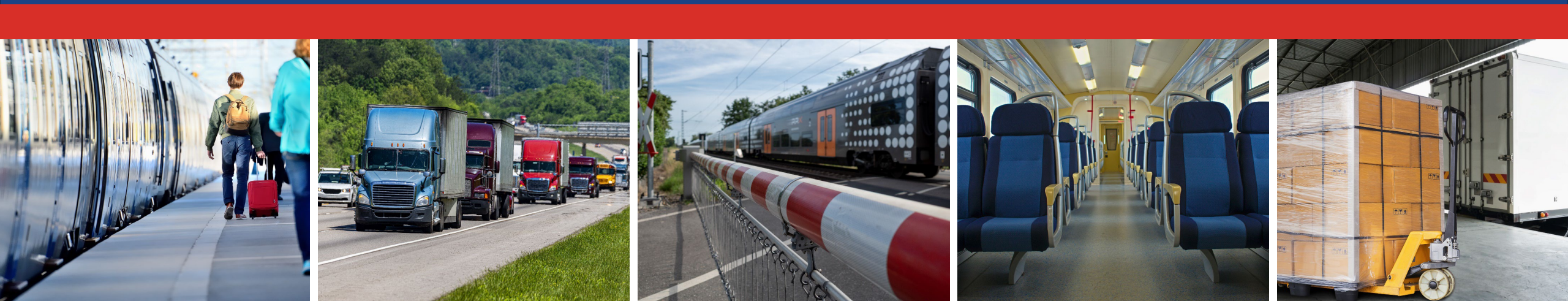


Brad Thoburn
Assistant Secretary
Strategic Development

850-414-5211
Brad.Thoburn@dot.state.fl.us



Public Comments



Member Comments

John Abrams
*Loves Travel
Stops*

Joe Arbona
*Genesee Wyoming
Railroad*

Aubrey Brown
CSX

William Crowe
*Canaveral Port
Authority*

Jaha Cummings
*City of
Punta Gorda*

Kevin Daugherty
*Space Coast Regional
Airport*

Laura DiBella
*Florida Harbor
Pilots Association*

John Dohm
*Florida TransAtlantic
Holdings*

Lauren Farrell
*Space
Florida*

Patrick Feeney
*Kenan Advantage
Group*

Bruce Lyon
*Winter Haven Economic
Development Council*

Terri Malone
*Escambia
County*

Robert Midgett
Walmart

Carol Obermeier
*Southwest Florida International
Airport (RSW)*

Seckin Ozkul
*University of South
Florida (USF)*

Samuel Pearson
UPS

Nick Primrose
*Jacksonville Port Authority
(JAXPORT)*

Mike Rubin
Florida Ports Council

Tori Rumenik
*Florida Fruit and
Vegetable Association*

Gregory Stuart
*Broward Metropolitan
Planning Organization*

Alexander Trauger
*MetroPlan
Orlando*

Kevin Walford
*Miami-Dade Transportation
Planning Organization*

Desiree Ann Wood
*REAL Women
in Trucking, Inc.*



**FREIGHT
& RAIL**



Adjourn



Rickey Fitzgerald

Manager
Freight & Rail Office

850.414.4702
rickey.fitzgerald@dot.state.fl.us



**FREIGHT
& RAIL**