

**State of Florida Department of Transportation
PAVEMENT EVALUATION AND CONDITION DATA SHEET**

Project No.: 242484-7		Cored By: Elipsis Engineering and Consulting				Date: 2/22/16 to 2/24/16				Page No.: 1 of 7										
County: Orange		Highway Sect. No.: 75280				From: West of SR 528/Beachline				To: West of SR 436/Kirman Rd										
Road No.: SR 400 (I-4) BTU		Begin MP: 5.650				End MP: 9.249				Length: 3.599										
Core No.	MP	Distance from left edge of lane (ft)	Lane	Wheel Path	Pavement Layer (in.)						Base		Crack				Pavt Cond.	Rut Depth (in)	Cross Slope (%)	Comments
					Type SP-12.5	Type SP-9.5	FC-4	Type SP	Type S	Core Length (in)	Type	Thick-ness (in)	Depth (in)	Type	Class	Extent				

Turkey Lake Road from 1000' south of Central FL Parkway to 2000' north of Central FL Parkway

1-1	*	9.0	R2	X	2.0			3.9		5.9	SC	9.6	-	-	-	-	F	0.2	3.1	
1-2	*	2.5	RRTL	X	2.3			3.3		5.6	SC	-	-	-	-	-	F	0.1	4.0	To EB Central Florida Parkway
1-3	*	3.0	R2	X	1.3			4.2		5.5	SC	11.5	-	-	-	-	F	0.2	3.7	
1-4	*	10.0	R2	X	1.2			3.2		4.4	SC	-	-	-	-	-	F	0.1	-2.8	
1-5	*	10.0	L2	X	1.7			3.6		5.3	SC	9.7	-	-	-	-	F	0.2	3.9	
1-6	*	3.0	L2	X	1.6			4.6		6.2	SC	-	-	-	-	-	F	0.0	3.2	Core fractured during extraction
1-7	*	2.5	L2	X	1.2			4.0		5.2	SC	10.8	B	ST	I	M	F	0.2	4.8	
1-8	*	2.5	R1	X	1.5			3.5		5.0	SC	-	-	-	-	-	F	0.2	0.9	
1-9	*	9.0	R1	X	0.8			4.2		5.0	SC	12.0	-	-	-	-	F	0.2	1.2	
1-10	*	2.5	R1	X	1.0			4.1		5.1	SC	-	-	-	-	-	F	0.3	-2.8	
1-11	*	8.5	RLTL	X	1.7			4.3		6.0	SC	11.0	-	-	-	-	F	0.0	-3.4	To Post Office
1-12	*	3.0	L1	X	1.4			5.4		6.8	SC	-	-	-	-	-	F	0.2	1.2	
1-13	*	9.0	L1	X	1.2			4.6		5.8	SC	11.5	-	-	-	-	F	0.2	2.9	
1-14	*	2.0	LLTL-1	X	1.1			4.6		5.7	SC	-	-	-	-	-	F	0.3	1.1	To EB Central Florida Parkway
1-15	*	9.0	L1	X	1.5			3.5		5.0	SC	13.0	B	ST	II	M	F	0.1	0.5	
1-16	*	2.0	LLTL	X	1.9			4.9		6.8	SC	-	-	-	-	-	G	0.0	0.8	To Sand Lake Altis Apartments
1-17	*	9.0	L1	X	1.1			4.1		5.2	SC	10.6	-	-	-	-	F	0.1	1.2	

Remarks: Crack Depth of "B" indicates full depth crack to the base. EOP = Edge of Pavement * = Refer to attached aerials for approximate locations cored
Crack Extent: L= Light; M= Moderate; S= Severe **Pavement Condition:** G= Good; F= Fair; P= Poor **Crack Types:** A= Alligator; Bl= Block; Br= Branch
SL= Single Longitudinal; **ST=** Single Transverse; **R=** Reflective; **J=** Joint; **OGFC=** Open-Graded FC Stress Crack
Base Types: LR= Limerock; COQ= Coquina; SC= Soil Cement; ABC= Asphalt Base; SAHM= Sand Asphalt Hot Mix; NB= No Base

**State of Florida Department of Transportation
PAVEMENT EVALUATION AND CONDITION DATA SHEET**

Project No.: 242484-7	Cored By: Elipsis Engineering and Consulting	Date: 2/22/16 to 2/24/16	Page No.: 2 of 7
County: Orange	Highway Sect. No: 75280	From: West of SR 528/Beachline	To: West of SR 436/Kirman Rd
Road No.: SR 400 (I-4) BTU	Begin MP: 5.650	End MP: 9.249	Length: 3.599

Core No.	MP	Distance from left edge of lane (ft)	Lane	Wheel Path	Pavement Layer (in.)						Base		Crack				Pavt Cond.	Rut Depth (in)	Cross Slope (%)	Comments
					Type SP-12.5	Type SP-9.5	FC-4	Type SP	Type S	Core Length (in)	Type	Thick-ness (in)	Depth (in)	Type	Class	Extent				

West Entrance Road from Westwood Blvd. to 1500' north of SR 528

2-1	*	7.5	R1				0.7			1.9		2.6	SC	—	B	SL	III	S	F	0.1	1.5	
2-2	*	8.0	L1				1.3			1.7		3.0	LR	13.8	—	—	—	—	F	0.0	1.8	
2-3	*	4.0	L1				1.6			1.9		3.5	SC	—	B	SL	III	S	P	0.3	1.3	

Westwood Boulevard from 500' east & west of West Entrance Road Intersection

3-1	*	7.0	R2				1.7			1.0		2.7	SC	8.8	B	ST	II	S	P	0.1	-1.5		
3-2	*	8.0	L2				1.4			1.8		3.2	SC	—	B	SL	II	S	P	0.2	1.9		
3-3	*	2.5	L2	X			1.5			0.8		2.3	SC	7.6	B	Br	I	M	P	0.2	-2.0		
3-4	*	4.0	R1				1.3			0.8		2.1	SC	—	B	Al	I	S	P	0.3	1.0		
3-5	*	2.5	RLTL	X			1.5			1.9		3.4	SC	12.4	—	—	—	—	F	0.0	3.0	To NB West Entrance Rd	
3-6	*	4.0	R1				1.4			0.7		2.1	SC	—	B	Br	III	S	P	0.6	-4.8		
3-7	*	6.5	L1				1.2			0.7		1.9	SC	8.6	B	Br	II	S	P	0.4	2.2		
3-8	*	3.0	L1	X			1.6			0.9		2.5	SC	—	—	—	—	—	F	0.0	-2.9		

Remarks: Crack Depth of "B" indicates full depth crack to the base. EOP = Edge of Pavement * = Refer to attached aerials for approximate locations cored
Crack Extent: L= Light; M= Moderate; S= Severe **Pavement Condition:** G= Good; F= Fair; P= Poor **Crack Types:** A= Alligator; Bl= Block; Br= Branch
 SL= Single Longitudinal; ST= Single Transverse; R= Reflective; J= Joint; OGFC= Open-Graded FC Stress Crack
Base Types: LR= Limerock; COQ= Coquina; SC= Soil Cement; ABC= Asphalt Base; SAHM= Sand Asphalt Hot Mix; NB= No Base

State of Florida Department of Transportation
PAVEMENT EVALUATION AND CONDITION DATA SHEET

Project No.: 242484-7	Cored By: Elipsis Engineering and Consulting	Date: 2/22/16 to 2/24/16	Page No.: 3 of 7
County: Orange	Highway Sect. No: 75280	From: West of SR 528/Beachline	To: West of SR 436/Kirman Rd
Road No.: SR 400 (I-4) BTU	Begin MP: 5.650	End MP: 9.249	Length: 3.599

Core No.	MP	Distance from left edge of lane (ft)	Lane	Wheel Path	Pavement Layer (in.)						Base		Crack				Pavt Cond.	Rut Depth (in)	Cross Slope (%)	Comments
					Type SP-12.5	Type SP-9.5	FC-4	Type SP	Type S	Core Length (in)	Type	Thick-ness (in)	Depth (in)	Type	Class	Extent				

Westwood Boulevard from 1500' south of Central FL Parkway to 1000' north of Central FL Parkway

4-1	*	7.0	L2		1.1				1.0		2.1	SC	11.7	B	Al	II	S	P	0.7	2.4		
4-2	*	9.0	LRTL	X	1.1				1.7		2.8	SC	—	B	ST	II	L	F	0.4	0.4	To WB Central Florida Parkway	
4-3	*	3.0	L2	X	1.8						1.8	SC	8.7	B	Br	III	S	P	1.6	3.5	Area in OWP has severe Al Cracking. Did not core here because the core would be in several pieces.	
4-4	*	8.5	L2	X	2.0						2.0	SC	—	B	SL	II	L	F	0.3	0.8		
4-5	*	2.5	R2	X	1.7				0.5		2.2	SC	6.8	B	Al	II	S	P	0.8	3.6	Severe IWP Cracking	
4-6	*	7.0	LLTL	X	1.4				0.7		2.1	SC	—	—	—	—	—	F	0.2	0.4	To Academic Dr	
4-7	*	4.0	L1		1.6				0.6		2.2	SC	7.9	B	ST	II	M	F	0.3	1.6		
4-8	*	2.5	LLTL	X	1.8				1.0		2.8	SC	—	B	SL	I	L	F	0.2	1.5	To EB Central Florida Parkway	
4-9	*	8.0	L1		1.5				1.0		2.5	SC	7.5	B	ST	I	L	F	0.0	-0.9		
4-10	*	4.0	R1		1.7						1.7	SC	—	B	ST	II	S	P	0.0	0.8		
4-11	*	4.0	RLTL		1.3				0.6		1.9	SC	7.4	B	Br	II	S	P	0.4	-0.7	Severe IWP Cracking To WB Central Florida Parkway	
4-12	*	2.5	R2	X	1.5				0.4		1.9	SC	—	—	—	—	—	F	0.0	1.9		

Remarks: Crack Depth of "B" indicates full depth crack to the base. EOP = Edge of Pavement * = Refer to attached aerials for approximate locations cored
Crack Extent: L= Light; M= Moderate; S= Severe **Pavement Condition:** G= Good; F= Fair; P= Poor **Crack Types:** A= Alligator; Bl= Block; Br= Branch
 SL= Single Longitudinal; ST= Single Transverse; R= Reflective; J= Joint; OGFC= Open-Graded FC Stress Crack
Base Types: LR= Limerock; COQ= Coquina; SC= Soil Cement; ABC= Asphalt Base; SAHM= Sand Asphalt Hot Mix; NB= No Base

**State of Florida Department of Transportation
PAVEMENT EVALUATION AND CONDITION DATA SHEET**

Project No.: 242484-7	Cored By: Elipsis Engineering and Consulting	Date: 2/22/16 to 2/24/16	Page No.: 4 of 7
County: Orange	Highway Sect. No: 75280	From: West of SR 528/Beachline	To: West of SR 436/Kirman Rd
Road No.: SR 400 (I-4) BTU	Begin MP: 5.650	End MP: 9.249	Length: 3.599

Core No.	MP	Distance from left edge of lane (ft)	Lane	Wheel Path	Pavement Layer (in.)						Base		Crack				Pavt Cond.	Rut Depth (in)	Cross Slope (%)	Comments
					Type SP-12.5	Type SP-9.5	FC-4	Type SP	Type S	Core Length (in)	Type	Thick-ness (in)	Depth (in)	Type	Class	Extent				

Central FL Parkway from Turkey Lake Road to Westlake Boulevard

5-1	*	8.5	L2	X		1.2			1.8		3.0	SC	—	0.4	SL	I	L	F	0.1	3.2		
5-2	*	8.0	L2			1.0			1.5		2.5	SC	9.5	—	—	—	—	F	0.0	3.6		
5-3	*	4.0	L2			1.2		2.1	1.5		4.8	SC	—	—	—	—	—	F	0.3	3.0	1.5" Crack starting from the bottom	
5-4	*	2.5	R2	X		0.7		1.6	2.2		4.5	SC	12.4	2.4	ST	I	L	F	0.2	2.7		
5-5	*	5.0	R2			1.0		1.8	0.8		3.6	SC	—	—	—	—	—	F	0.0	-3.0		
5-6	*	7.0	R3			1.0		1.5			2.5	SC	10.5	—	—	—	—	F	0.0	-2.5		
5-7	*	3.0	R3	X		1.2		1.3			2.5	SC	—	—	—	—	—	F	0.3	3.1		
5-8	*	2.5	L1	X		1.2		2.2			3.4	SC	10.4	0.2	SL	I	L	F	0.1	2.2		
5-9	*	3.0	L1	X		1.2		1.7	0.9		3.8	SC	—	0.2	SL	I	L	F	0.0	2.4		
5-10	*	9.5	R1	X	1.4			1.4	2.0		4.8	SC	10.0	—	—	—	—	F	0.0	1.4		
5-11	*	4.0	R1			1.7		1.4			3.1	SC	—	2.0	SL	I	L	F	0.2	-1.2		
5-12	*	8.0	RLTL-1			1.1		1.5			2.6	SC	10.9	—	—	—	—	F	0.3	-4.1	To NB Westwood Blvd	

Remarks: Crack Depth of "B" indicates full depth crack to the base. EOP = Edge of Pavement * = Refer to attached aerials for approximate locations cored
Crack Extent: L= Light; M= Moderate; S= Severe **Pavement Condition:** G= Good; F= Fair; P= Poor **Crack Types:** A= Alligator; Bl= Block; Br= Branch
 SL= Single Longitudinal; ST= Single Transverse; R= Reflective; J= Joint; OGFC= Open-Graded FC Stress Crack
Base Types: LR= Limerock; COQ= Coquina; SC= Soil Cement; ABC= Asphalt Base; SAHM= Sand Asphalt Hot Mix; NB= No Base

**State of Florida Department of Transportation
PAVEMENT EVALUATION AND CONDITION DATA SHEET**

Project No.: 242484-7	Cored By: Elipsis Engineering and Consulting	Date: 2/22/16 to 2/24/16	Page No.: 5 of 7
County: Orange	Highway Sect. No: 75280	From: West of SR 528/Beachline	To: West of SR 436/Kirman Rd
Road No.: SR 400 (I-4) BTU	Begin MP: 5.650	End MP: 9.249	Length: 3.599

Core No.	MP	Distance from left edge of lane (ft)	Lane	Wheel Path	Pavement Layer (in.)						Base		Crack				Pavt Cond.	Rut Depth (in)	Cross Slope (%)	Comments
					Type SP-12.5	Type SP-9.5	FC-4	Type SP	Type S	Core Length (in)	Type	Thick-ness (in)	Depth (in)	Type	Class	Extent				

Turkey Lake Road (south) from 2600' south of Sand Lake Road to SLR Intersection

6-1	*	10.0	R2	X	1.1				3.0		4.1	SC	—	B	ST	II	L	F	0.1	2.7	
6-2	*	2.5	R2	X	2.2				3.0		5.2	SC	7.3	—	—	—	—	F	0.2	6.5	RH Curve
6-3	*	5.0	RRTL-2		1.2			2.9		13.5	ABC	9.4	—	—	—	—	F	0.3	3.2	Cored in the middle of the lane to avoid possible underground utilities; To EB Sandlake Rd	
6-4	*	2.5	L2	X	2.3				3.3		5.6	SC	9.4	B	SL	I	L	F	0.2	-1.5	LH Curve
6-5	*	2.5	L2	X	1.9				3.9		5.8	SC	—	B	ST	II	M	F	0.1	6.7	
6-6	*	4.0	R1		1.0				3.2		4.2	SC	8.3	1.0	SL	II	L	F	0.2	-6.7	LH Curve
6-7	*	9.0	R1	X	2.0				2.6		4.6	SC	—	—	—	—	F	0.0	2.4		
6-8	*	2.5	RLTL-1	X	0.9			3.9		4.8	SC	16.7	—	—	—	—	F	0.1	1.7	To WB Sand Lake Rd	
6-9	*	2.5	L1	X	2.1				2.0		4.1	SC	—	—	—	—	F	0.2	-0.7		
6-10	*	9.0	L1	X	0.8			1.1	2.5		4.4	SC	9.9	—	—	—	F	0.0	-1.2	RH Curve	
6-11	*	2.5	L1	X	1.7				3.9		5.6	SC	—	—	—	—	F	0.1	0.7		

Turkey Lake Road (north) from SLR Intersection to 1000' north of Sand Lake Road

7-1	*	3.0	R2	X		1.6	0.8		3.0		5.4	LR	—	—	—	—	F	0.0	3.4	
7-2	*	10.5	L2			0.9	1.0		3.1		5.0	LR	11.0	—	—	—	F	0.1	3.1	
7-3	*	2.5	L2/LRTL	X		0.9	0.9		2.9		4.7	LR	—	—	—	—	F	0.2	2.0	To WB Sand Lake Rd

Remarks: Crack Depth of "B" indicates full depth crack to the base. EOP = Edge of Pavement * = Refer to attached aerials for approximate locations cored
Crack Extent: L= Light; M= Moderate; S= Severe **Pavement Condition:** G= Good; F= Fair; P= Poor **Crack Types:** A= Alligator; Bl= Block; Br= Branch
 SL= Single Longitudinal; ST= Single Transverse; R= Reflective; J= Joint; OGFC= Open-Graded FC Stress Crack
Base Types: LR= Limerock; COQ= Coquina; SC= Soil Cement; ABC= Asphalt Base; SAHM= Sand Asphalt Hot Mix; NB= No Base

**State of Florida Department of Transportation
PAVEMENT EVALUATION AND CONDITION DATA SHEET**

Project No.: 242484-7		Cored By: Elipsis Engineering and Consulting				Date: 2/22/16 to 2/24/16				Page No.: 6 of 7									
County: Orange		Highway Sect. No.: 75280				From: West of SR 528/Beachline				To: West of SR 436/Kirman Rd									
Road No.: SR 400 (I-4) BTU		Begin MP: 5.650				End MP: 9.249				Length: 3.599									
Core No.	MP	Distance from left edge of lane (ft)	Lane	Wheel Path	Pavement Layer (in.)					Base		Crack				Pavt Cond.	Rut Depth (in)	Cross Slope (%)	Comments
					Type SP-12.5	Type SP-9.5	FC-4	Type SP	Type S	Core Length (in)	Type	Thick-ness (in)	Depth (in)	Type	Class				

Turkey Lake Road (north) from SLR Intersection to 1000' north of Sand Lake Road -cont'd

7-4	*	8.5	R1	X		0.4	0.8		2.6		3.8	LR	10.7	-	-	-	-	F	0.3	2.1	
7-5	*	8.0	R1			1.5	0.9		2.7		5.1	LR	-	B	SL	II	S	F	0.0	-0.5	
7-6	*	9.0	L1	X		1.0	0.5		3.0		4.5	LR	10.4	-	-	-	-	F	0.0	3.2	
7-7	*	2.5	LLTL-1	X	0.9	2.1					15.4	ABC	12.4	-	-	-	-	F	0.3	-0.7	To EB Sand Lake Rd; LR noted below ABC

Sand Lake Road from 1300' west of Turkey Lake Road to west of International Drive

8-1	*	9.0	R3	X		1.1			2.0		3.1	LR	12.9	B	SL	II	S	P	0.2	2.1	
8-2	*	9.0	R3	X		0.8		2.5			3.3	LR	-	B	Br	II	S	P	0.3	2.5	
8-3	*	7.0	R3		1.2				3.6		4.8	LR	12.2	B	Br	II	S	P	0.4	1.7	Severe IWP Rutting
8-4	*	3.0	R3	X		0.6			3.3		3.9	LR	-	-	-	-	-	P	0.3	3.0	
8-5	*	2.5	RRTL	X		0.5			3.5		4.0	LR	13.0	-	-	-	-	P	0.4	2.1	To SB International Dr
8-6	*	2.5	L3	X		0.6			3.0		3.6	LR	-	-	-	-	-	P	0.4	3.9	
8-7	*	11.0	L3			0.6			3.1		3.7	LR	12.3	-	-	-	-	P	0.3	2.6	
8-8	*	2.0	L3	X		0.8		0.7	1.5		3.0	LR	-	-	-	-	-	F	0.3	1.9	Core broke during extraction
8-9	*	8.0	L3		1.4			2.4			17.4	ABC	13.6	-	-	-	-	F	0.3	2.4	
8-10	*	2.5	R1	X		0.8			3.0		3.8	LR	-	-	-	-	-	F	0.2	2.6	

Remarks: Crack Depth of "B" indicates full depth crack to the base. EOP = Edge of Pavement * = Refer to attached aerials for approximate locations cored

Crack Extent: L= Light; M= Moderate; S= Severe **Pavement Condition:** G= Good; F= Fair; P= Poor **Crack Types:** A= Alligator; BI= Block; Br= Branch

SL= Single Longitudinal; **ST=** Single Transverse; **R=** Reflective; **J=** Joint; **OGFC=** Open-Graded FC Stress Crack

Base Types: LR= Limerock; COQ= Coquina; SC= Soil Cement; ABC= Asphalt Base; SAHM= Sand Asphalt Hot Mix; NB= No Base

**State of Florida Department of Transportation
PAVEMENT EVALUATION AND CONDITION DATA SHEET**

Project No.: 242484-7		Cored By: Elipsis Engineering and Consulting				Date: 2/22/16 to 2/24/16				Page No.: 7 of 7										
County: Orange		Highway Sect. No: 75280				From: West of SR 528/Beachline				To: West of SR 436/Kirman Rd										
Road No.: SR 400 (I-4) BTU		Begin MP: 5.650				End MP: 9.249				Length: 3.599										
Core No.	MP	Distance from left edge of lane (ft)	Lane	Wheel Path	Pavement Layer (in.)						Base		Crack				Pavt Cond.	Rut Depth (in)	Cross Slope (%)	Comments
					Type SP-12.5	Type SP-9.5	FC-4	Type SP	Type S	Core Length (in)	Type	Thick-ness (in)	Depth (in)	Type	Class	Extent				

Sand Lake Road from 1300' west of Turkey Lake Road to west of International Drive

8-11	*	8.0	RLTL-1		1.0		0.9			15.9	LR	14.0	-	-	-	-	F	0.2	0.7	To NB Turkey Lake Rd; 5.1' of LR noted below ABC	
8-12	*	8.5	R1	X	0.9			3.1		4.0	LR	-	B	SL	II	M	F	0.3	2.1		
8-13	*	9.0	RLTL-1	X			0.6		3.3	3.9	LR	12.1	3.1	ST	II	L	P	0.5	1.7	To EB I-4	
8-14	*	2.0	R1	X			0.4		2.8	3.2	LR	-	B	ST	II	L	P	0.3	2.6		
8-15	*	9.0	RLTL	X			0.6		2.9	3.5	LR	15.5	-	-	-	-	P	0.2	2.0	To Quality Inn	
8-16	*	2.0	RLTL-1	X			0.7		3.3	4.0	LR	-	-	-	-	-	P	0.2	1.0	To NB International Dr	
8-17	*	11.0	L1				0.7		3.3	4.0	LR	13.5	B	SL	III	S	P	0.4	2.2		
8-18	*	2.5	L1	X			0.7		2.4	3.1	LR	-	-	-	-	-	P	0.2	1.3		
8-19	*	8.5	L1	X			0.6		3.2	3.8	LR	12.7	-	-	-	-	P	0.3	2.9		
8-20A	*	5.5	LLTL-1		0.6			3.7		4.3	LR	-	B	SL	I	M	F	0.3	-0.2	Core is near the LLTL-2 Side; To SB Turkey Lake Rd	
8-20B	*	3.0	LLTL-1	X	0.5			2.1		15.0	ABC	12.4	-	-	-	-	F	0.3	-0.2	Core is near the Inside Median Side; To SB Turkey Lake Rd	
8-21	*	7.0	L1			0.8		2.7		3.5	LR	8.7	-	-	-	-	F	0.2	1.3		
8-22	*	2.5	L1	X		1.3		3.0		4.3	LR	-	-	-	-	-	F	0.3	2.2		

Remarks: Crack Depth of "B" indicates full depth crack to the base. EOP = Edge of Pavement * = Refer to attached aerials for approximate locations cored
Crack Extent: L= Light; M= Moderate; S= Severe **Pavement Condition:** G= Good; F= Fair; P= Poor **Crack Types:** A= Alligator; B= Block; Br= Branch
SL= Single Longitudinal; **ST=** Single Transverse; **R=** Reflective; **J=** Joint; **OGFC=** Open-Graded FC Stress Crack
Base Types: LR= Limerock; COQ= Coquina; SC= Soil Cement; ABC= Asphalt Base; SAHM= Sand Asphalt Hot Mix; NB= No Base

Supplemental Data to PECD

(GPS Coordinates for Each Locations Cored)

SR 400

FIN: 242484-7

County: Orange

Core #	GPS Coordinates
	28.409914 °
1-1	-81.478554 °
	28.410838 °
1-2	-81.477639 °
	28.411952 °
1-3	-81.476305 °
	28.414295 °
1-4	-81.474821 °
	28.413978 °
1-5	-81.475066 °
	28.411956 °
1-6	-81.476623 °
	28.410351 °
1-7	-81.478506 °
	28.409393 °
1-8	-81.479024 °
	28.411004 °
1-9	-81.47757 °
	28.413009 °
1-10	-81.475312 °
	28.414955 °
1-11	-81.474928 °
	28.415629 °
1-12	-81.475071 °
	28.412404 °
1-13	-81.475944 °
	28.4117 °
1-14	-81.476688 °
	28.410863 °
1-15	-81.477822 °
	28.410138 °
1-16	-81.478527 °
	28.409527 °
1-17	-81.47906 °
	28.422424 °
2-1	-81.469238 °
	28.423563 °
2-2	-81.470938 °
	28.419666 °
2-3	-81.467401 °

Core #	GPS Coordinates
	28.418612 °
3-1	-81.466714 °
	28.418846 °
3-2	-81.465555 °
	28.418802 °
3-3	-81.467858 °
	28.41824 °
3-4	-81.468403 °
	28.418502 °
3-5	-81.46781 °
	28.418565 °
3-6	-81.465571 °
	28.418941 °
3-7	-81.466523 °
	28.418448 °
3-8	-81.468734 °
	28.411131 °
4-1	-81.471114 °
	28.409588 °
4-2	-81.471601 °
	28.408412 °
4-3	-81.472096 °
	28.406051 °
4-4	-81.474688 °
	28.406288 °
4-5	-81.474442 °
	28.411469 °
4-6	-81.470966 °
	28.410287 °
4-7	-81.471259 °
	28.409608 °
4-8	-81.471465 °
	28.407234 °
4-9	-81.473549 °
	28.407073 °
4-10	-81.473625 °
	28.408621 °
4-11	-81.471896 °
	28.407503 °
4-12	-81.472845 °

Supplemental Data to PECD

(GPS Coordinates for Each Locations Cored)

SR 400

FIN: 242484-7

County: Orange

Core #	GPS Coordinates
	28.409407 °
5-1	-81.472214 °
	28.409769 °
5-2	-81.473895 °
	28.410825 °
5-3	-81.47637 °
	28.410382 °
5-4	-81.475814 °
	28.409552 °
5-5	-81.474188 °
	28.409244 °
5-6	-81.473239 °
	28.409105 °
5-7	-81.472361 °
	28.409471 °
5-8	-81.472644 °
	28.410274 °
5-9	-81.475416 °
	28.410986 °
5-10	-81.476787 °
	28.409814 °
5-11	-81.474622 °
	28.409158 °
5-12	-81.472138 °
	28.444662 °
6-1	-81.474903 °
	28.447233 °
6-2	-81.476994 °
	28.449472 °
6-3	-81.477711 °
	28.447688 °
6-4	-81.477652 °
	28.445318 °
6-5	-81.475115 °
	28.446328 °
6-6	-81.475535 °
	28.448374 °
6-7	-81.477772 °
	28.449559 °
6-8	-81.477879 °

Core #	GPS Coordinates
	28.449341 °
6-9	-81.47794 °
	28.446753 °
6-10	-81.476338 °
	28.444026 °
6-11	-81.475056 °
	28.451326 °
7-1	-81.477543 °
	28.452095 °
7-2	-81.47767 °
	28.450581 °
7-3	-81.47785 °
	28.450556 °
7-4	-81.477711 °
	28.452321 °
7-5	-81.477508 °
	28.451283 °
7-6	-81.477718 °
	28.450399 °
7-7	-81.477765 °
	28.449902 °
8-1	-81.480519 °
	28.449912 °
8-2	-81.478731 °
	28.449865 °
8-3	-81.475964 °
	28.449866 °
8-4	-81.474317 °
	28.449822 °
8-5	-81.471764 °
	28.45008 °
8-6	-81.471911 °
	28.450125 °
8-7	-81.474295 °
	28.450127 °
8-8	-81.477012 °
	28.450119 °
8-9	-81.478676 °
	28.449944 °
8-10	-81.479746 °

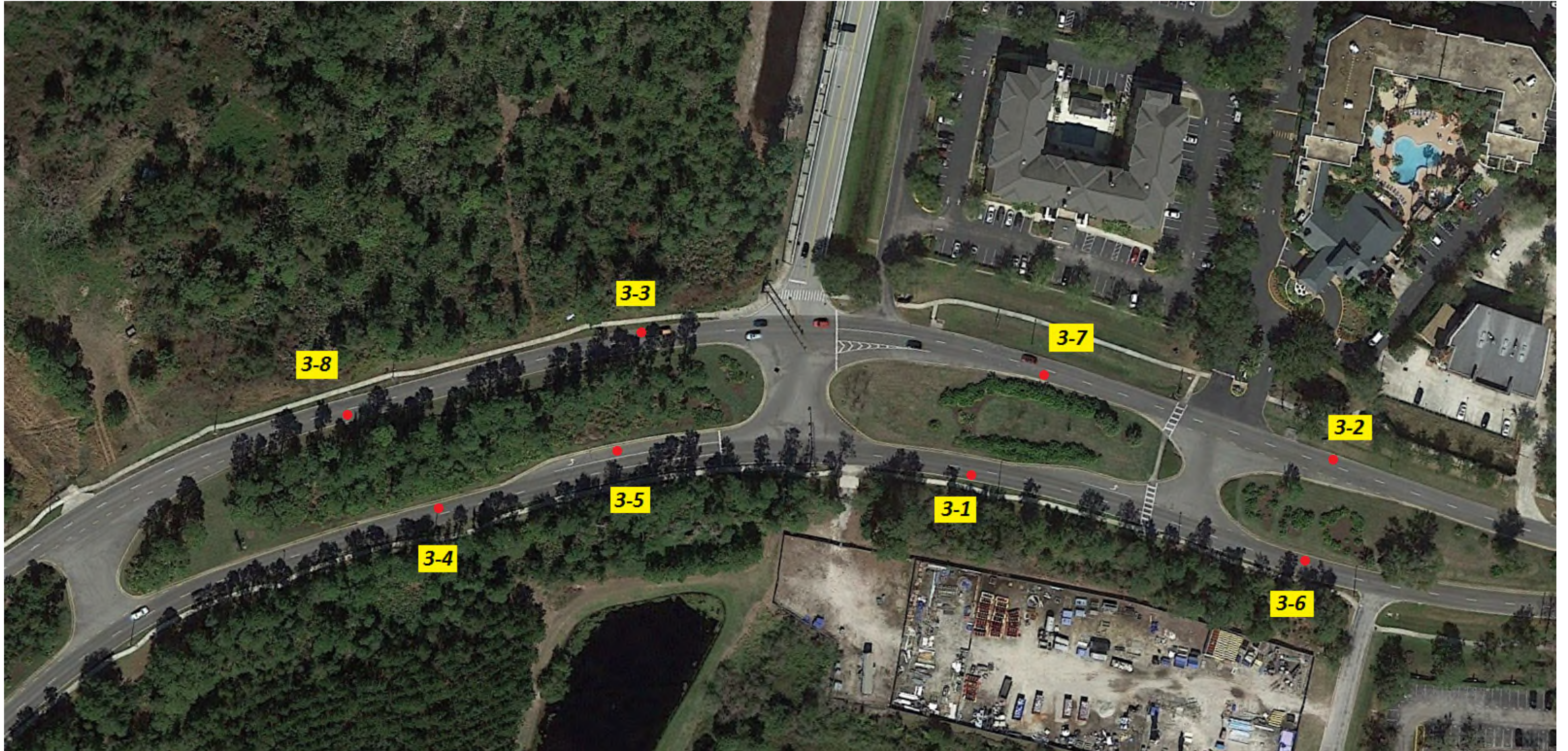
Turkey Lake Road - - Near Central Florida Parkway (17 cores - 1 series)



West Entrance Road - - From Westwood Blvd. to 1500' +/- North of SR 528 (3 cores - 2 series)



Westwood Boulevard - - 500' East & West of West Entrance Road (8 cores - 3 series)



Westwood Boulevard - - Near Central Florida Parkway (12 cores - 4 series)



Central Florida Parkway - - From Turkey Lake Road to Westwood Boulevard (12 cores - 5 series)



Turkey Lake Road - - South of Sand Lake Road (11 cores - 6 series)



Turkey Lake Road - - North of Sand Lake Road (7 cores - 7 series)



Sand Lake Road - - West of Turkey Lake Road to West of I-Drive (22 cores - 8 series)

