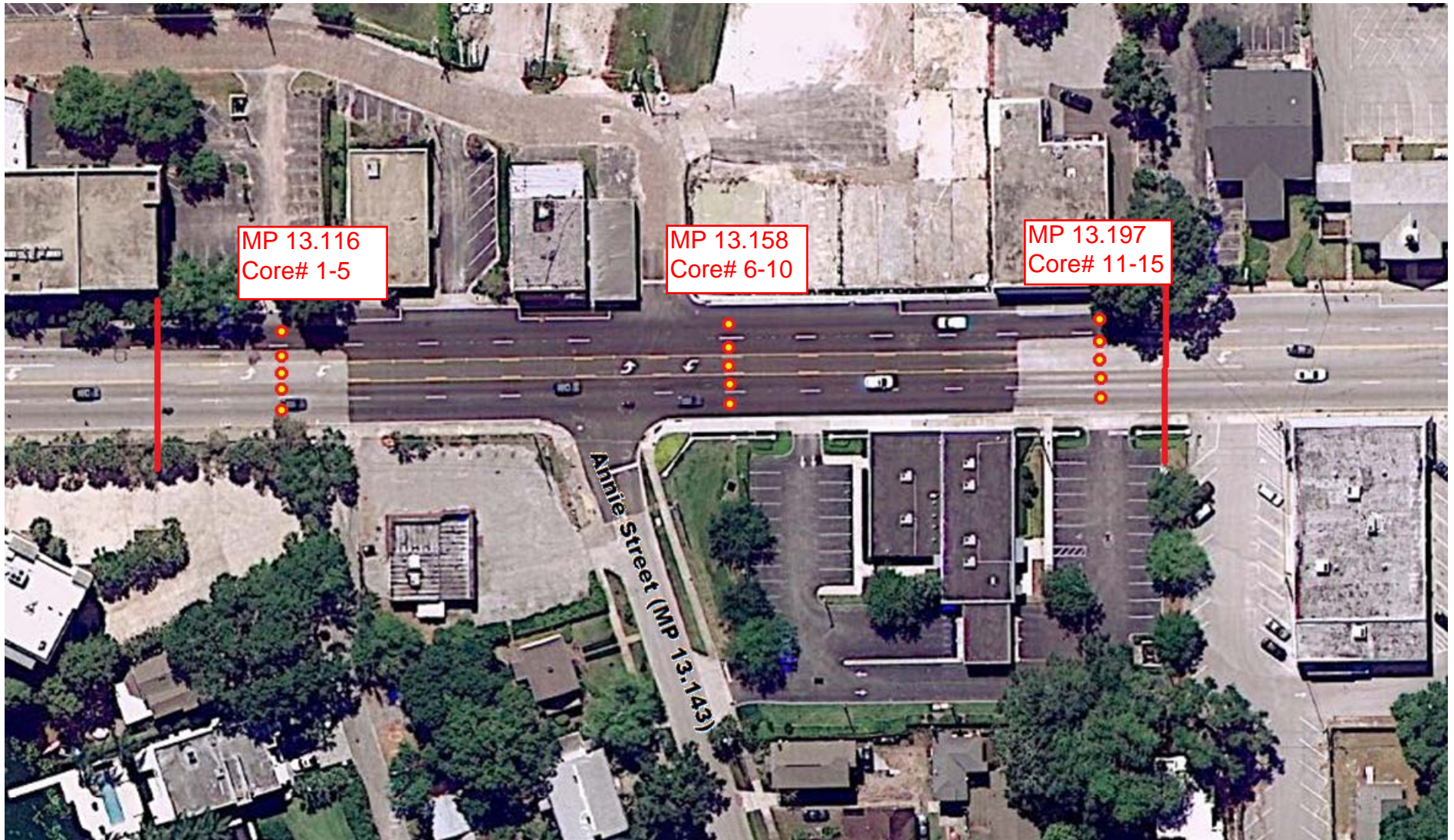


**State of Florida Department of Transportation
PAVEMENT EVALUATION AND CONDITION DATA SHEET**

Project No.: 430757-1					Cored By: J.C. & J.N. (Ardaman & Associates)								Date: 9/29/2011				Page No.: 1 of 1					
County: Orange					Highway Sect. No.: 75040								From: 350' South of Annie Street				To: 400' North of Annie Street					
Road No.: SR 527 (Orange Avenue)					Begin MP: 13.077								End MP: 13.219				Length: 0.142 mile					
Core No.	MP	Distance from left edge of lane (ft)	Lane	Wheel Path	Pavement Layer (in.)							Base		Crack				Pavt Cond.	Rut Depth (in)	Cross Slope (%)	Comments	
					FC-9.5	FC-6	Type SP-C	Type I	Binder	Core Length (in)	Type	Thick-ness (in)	Depth (in)	Type	Class	Extent						
1	13.116	8.0	L2		0.8	-	3.5	-	-		4.3	L/R	15.2									Granite Aggregates In Asphalt Mix
2	13.116	5.0	L1		-	1.0	0.9	0.3	1.6		3.8	L/R	9.1									
3	13.116	5.5	C		-	1.2	1.0	-	1.5		3.7	L/R	7.6									Crowned. Sloped to the West. See attached sketch for approximate location of the crown line.
4	13.116	1.5	R1		-	1.0	0.5	-	0.5		2.0	L/R	10.6	B	S	II	M	P				Settlement Crack
5	13.116	4.0	R2		-	1.2	2.4	-	-		3.6	L/R	15.4									
6	13.158	10.5	L2		1.0	-	2.8	-	-		3.8	L/R	13.3									Granite Aggregates In Asphalt Mix
7	13.158	6.0	L1		1.0	-	2.3	-	-		3.3	L/R	17.2									Granite Aggregates In Asphalt Mix
8	13.158	4.5	C		1.0	-	2.7	-	-		3.7	L/R	17.2									Crowned. See attached sketch for approx. location of crown line. Granite Aggregates In Asphalt Mix
9	13.158	8.5	R1	X	1.0	-	2.8	-	-		3.8	L/R	17.7									Granite Aggregates In Asphalt Mix
10	13.158	9.0	R2	X	1.1	-	2.4	-	-		3.5	L/R	18.8									Granite Aggregates In Asphalt Mix
11	13.197	2.5	L2	X	-	-	2.2	-	-		2.2	L/R	16.3									Granite Aggregates In Asphalt Mix
12	13.197	2.0	L1	X	-	1.4	0.7	0.7	1.2		4.0	L/R	12.9									
13	13.197	5.0	C		-	1.3	1.2	0.6	1.7		4.8	L/R	15.2									Crowned. Sloped to the West. See attached sketch for approximate location of the crown line.
14	13.197	1.5	R1		-	1.1	0.9	0.5	1.6		4.1	L/R	14.3									
15	13.197	4.0	R2	X	-	1.3	0.8	0.7	1.5		4.3	L/R	12.7									

Remarks: Crack Depth of "B" indicates full depth crack to the base. EOP = Edge of Pavement
Crack Extent: L= Light; M= Moderate; S= Severe Pavement Condition: G= Good; F= Fair; P= Poor Crack Types: A= Alligator; Bl= Block; Br= Branch
SL= Single Longitudinal; ST= Single Transverse; R= Reflective; J= Joint; OGFC= Open-Graded FC Stress Crack
Base Types: LR= Limerock; COQ= Coquina; SC= Soil Cement; ABC= Asphalt Base; SAHM= Sand Asphalt Hot Mix; NB= No Base

FPN 430757-1; SR 527 (Orange Ave.) Coring Plan



3 cores per lane; 15 cores total