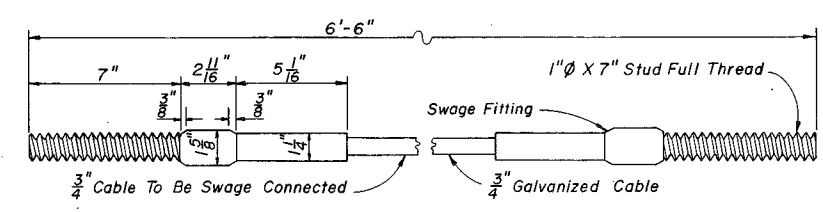
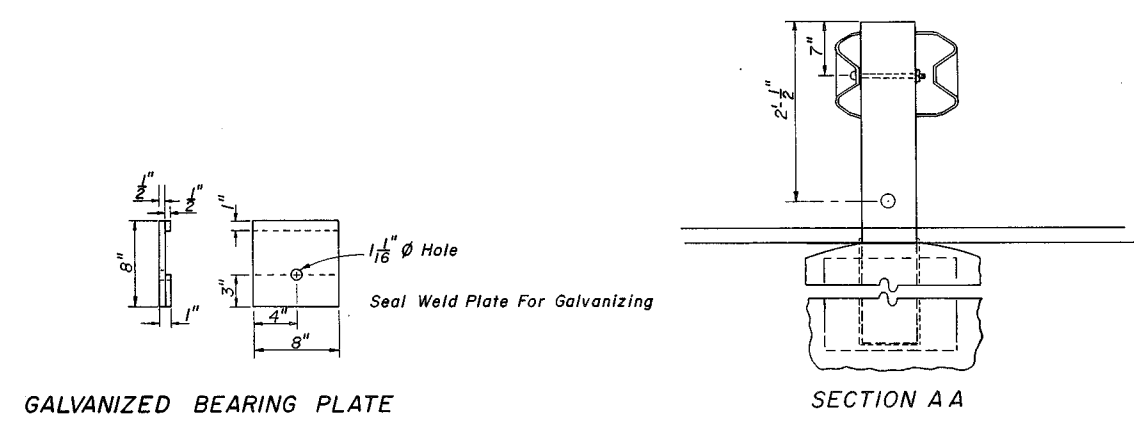
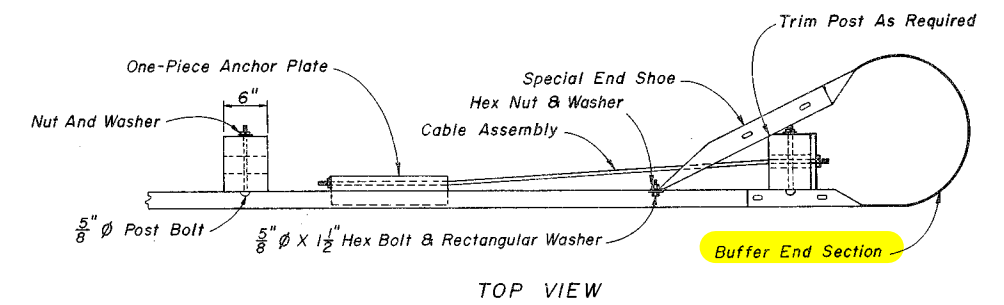
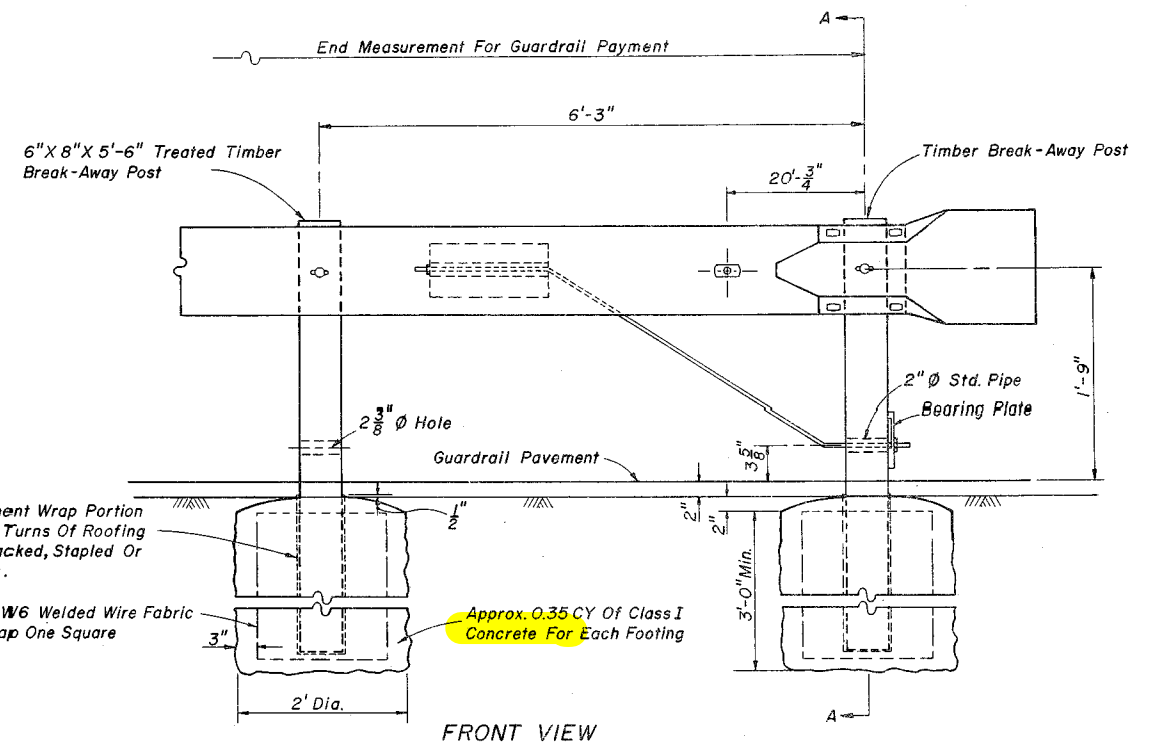
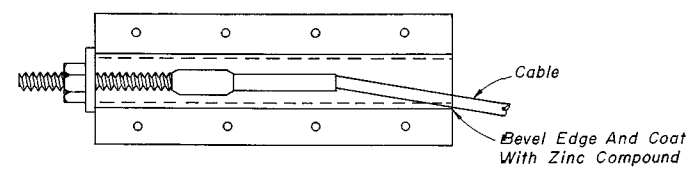


**STANDARD FLARE
DETAIL P**



CABLE ASSEMBLY

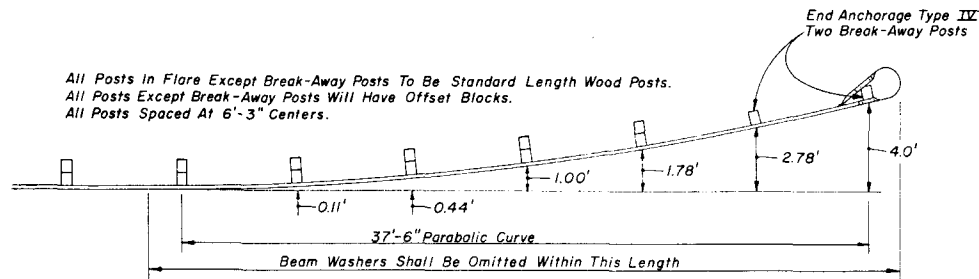


END ANCHORAGE TYPE IV

Note: The payment for the items of End Anchorage Assemblies Type IV shall include furnishing and installing the Buffer End Section, Special End Shoe, One Piece Anchor Plate, Cable Assembly, Pipe Sleeve Bearing Plate, two Treated Timber Break-Away Posts, two Concrete Footings including Wire Fabric and Roofing Paper and the necessary hardware.

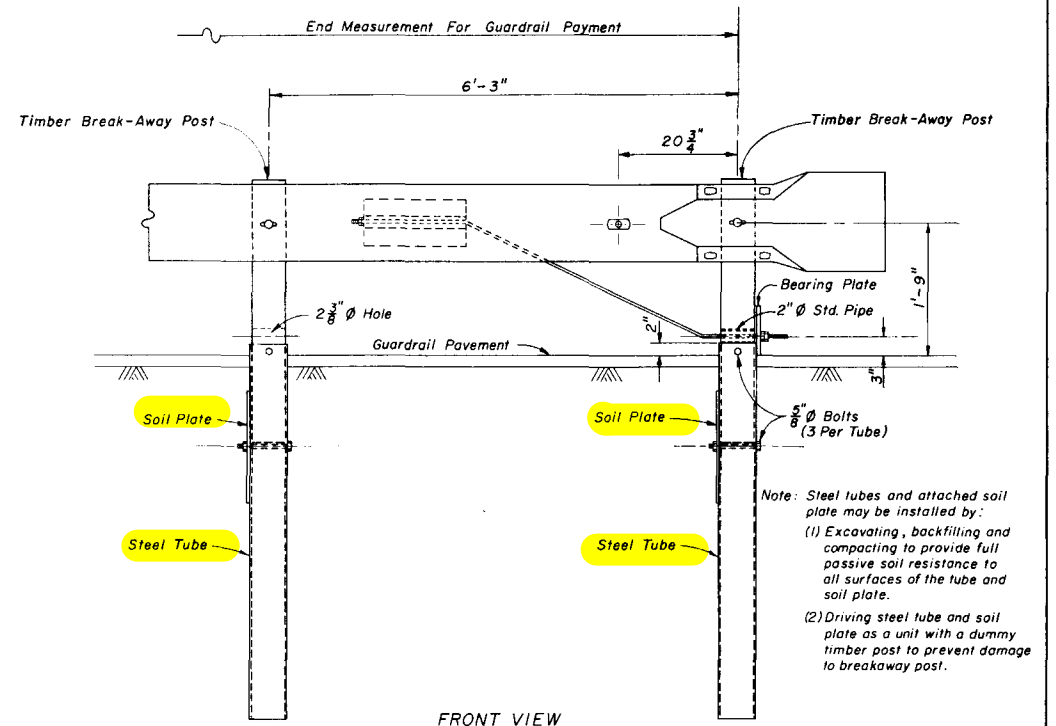
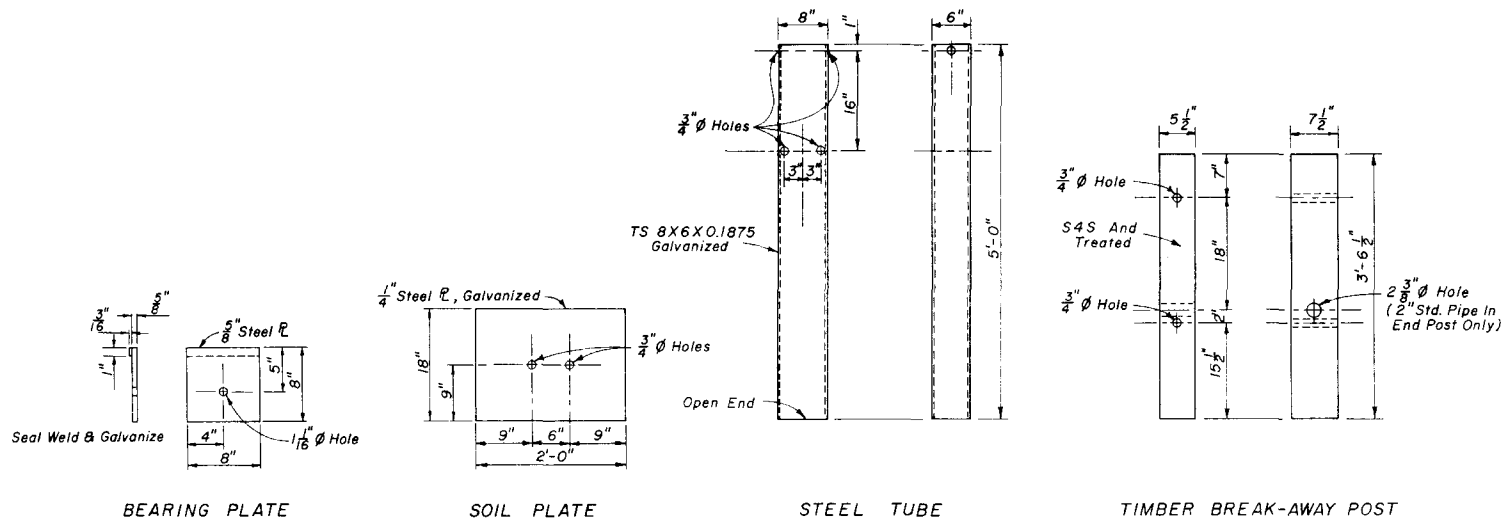
STATE OF FLORIDA DEPARTMENT OF TRANSPORTATION ROAD DESIGN				
GUARDRAIL				
Designed by	Names	Dates	Approved By	
Drawn by	J M	9/80	<i>Jc. Smith</i> Deputy Design Engineer, Roadways	
Checked by	J V G	9/80	Revision No.	Sheet No.
F.H.W.A. Approved: 10/7/80			81	6 of 6
				400

"Type IV" (Original) (Version of BCT) - 1981
Note: Concrete Foundations & Buffer End Section

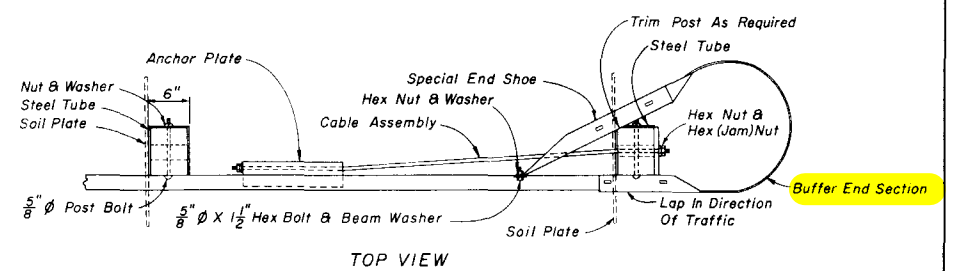


All Posts in Flare Except Break-Away Posts To Be Standard Length Wood Posts.
 All Posts Except Break-Away Posts Will Have Offset Blocks.
 All Posts Spaced At 6'-3" Centers.

STANDARD FLARE DETAIL P



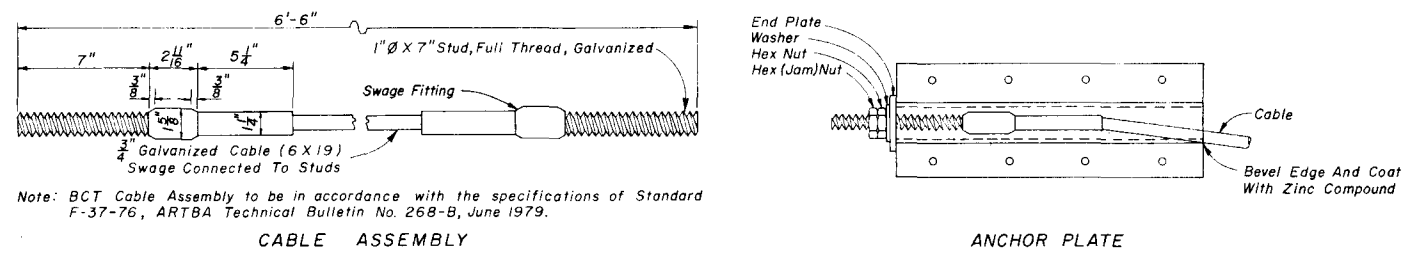
FRONT VIEW



TOP VIEW

END ANCHORAGE TYPE IV

Note: The payment for the items of End Anchorage Assemblies Type IV shall include furnishing and installing the Buffer End Section, Special End Shoe, One-Piece Anchor Plate, Cable Assembly, Pipe Sleeve, Soil Plates, Steel Tubes, Bearing Plate, two Treated Timber Break-Away Posts, and the necessary hardware.



Note: BCT Cable Assembly to be in accordance with the specifications of Standard F-37-76, ARTBA Technical Bulletin No. 268-B, June 1979.

"Type IV" (Updated) (Version of BCT) - 1982
Note: Steel Tube Foundations & Buffer End Section

STATE OF FLORIDA DEPARTMENT OF TRANSPORTATION ROAD DESIGN					
GUARDRAIL					
Designed by	Names	Dates	Approved By		
Drawn by	J M	1/81	Deputy Design Engineer, Roadways		
Checked by	J V G	1/81	Revision No.	Sheet No.	Index No.
F.H.W.A. Approved: 10/8/81			82	4 of 9	400