

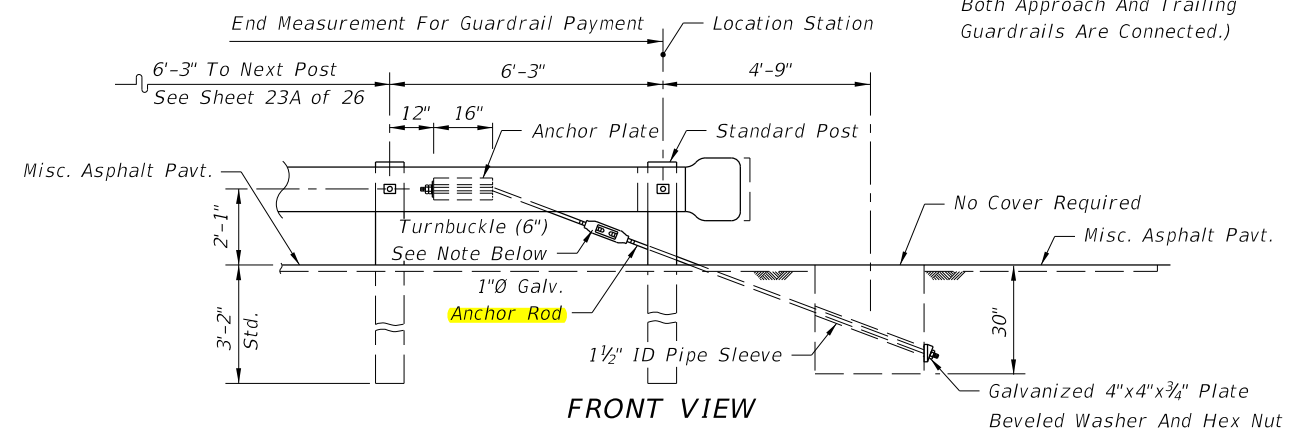
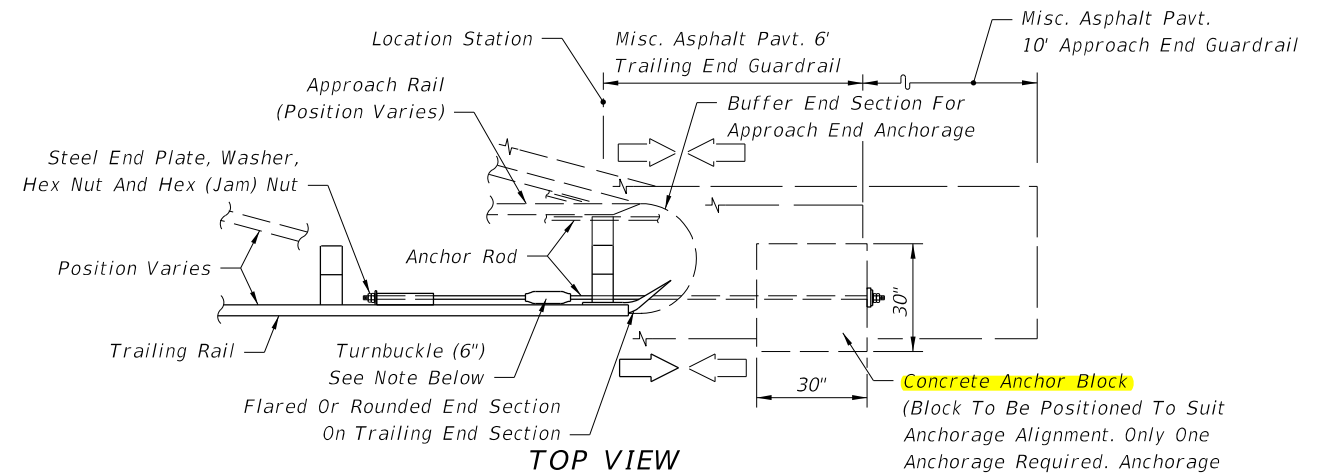
Timber Or Steel Post With Timber Offset Block May Be Used, Timber Post And Offset Block Shown. This Post Must Be Timber In A Steel Post Run Of Guardrail Adjacent To Sidewalks Or Shared Use Paths (see PEDESTRIAN SAFETY TREATMENTS).

- Note: Steel tubes and attached soil plate may be installed by:
1. Excavating, backfilling and compacting to provide full passive soil resistance to all surfaces of the tube and soil plate
 2. Driving steel tube and soil plate unit with a dummy timber post prevent damage to breakaway p

The payment for the items of End Anchorage Assembly Type II shall be full compensation for furnishing and installing either the Round or the Buffer End Section, the Beam Anchor Plate, Cable Assembly, Pipe Sleeve, Soil Plate, Steel Tube, Bearing Plate, Short Timber Breakaway Post, Offset Blocks and the necessary hardware.

CABLE ANCHOR OPTION

END ANCHORAGE ASSEMBLY TYPE II



Turnbuckle shall be field cut, threaded 4" on each end, then cleaned and metalized in accordance with Sections 562 and 975 of the Standard Specifications. The cost for cutting, threading, metalizing and the turnbuckle shall be included in the contract unit price for End Anchorage Assembly Type II, EA.

The payment for the items of End Anchorage Assembly Type II shall be full compensation for furnishing and installing the Beam Anchor Plate, Anchor Rod, Pipe Sleeve, Anchor Block, either Flared, Rounded or Buffer End Section, and the necessary hardware.

CONCRETE ANCHOR BLOCK OPTION

TYPE II NOTES

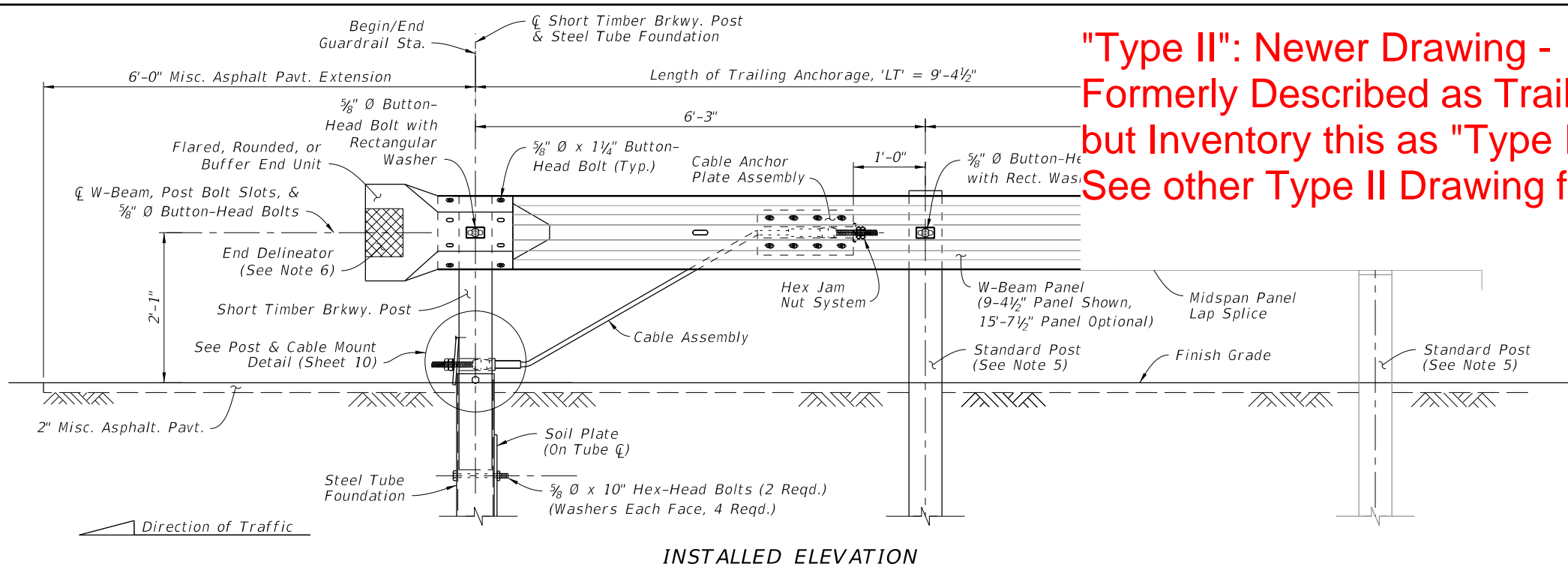
1. Unless specified in the plans, the contractor can supply either the cable anchor option or the concrete anchor block option.
2. Type II end anchorage assemblies are approved for all speeds and are intended for use as:

"Type II": Older Drawings - Both Versions Shown (Soil Plate Anchor OR Concrete Anchor Block with Anchor Rod) Note: Flared or Rounded End Section (small), <<Buffer End Section for Double Face Guardrail Only (unlike Type IV, MELT, CRT)>>

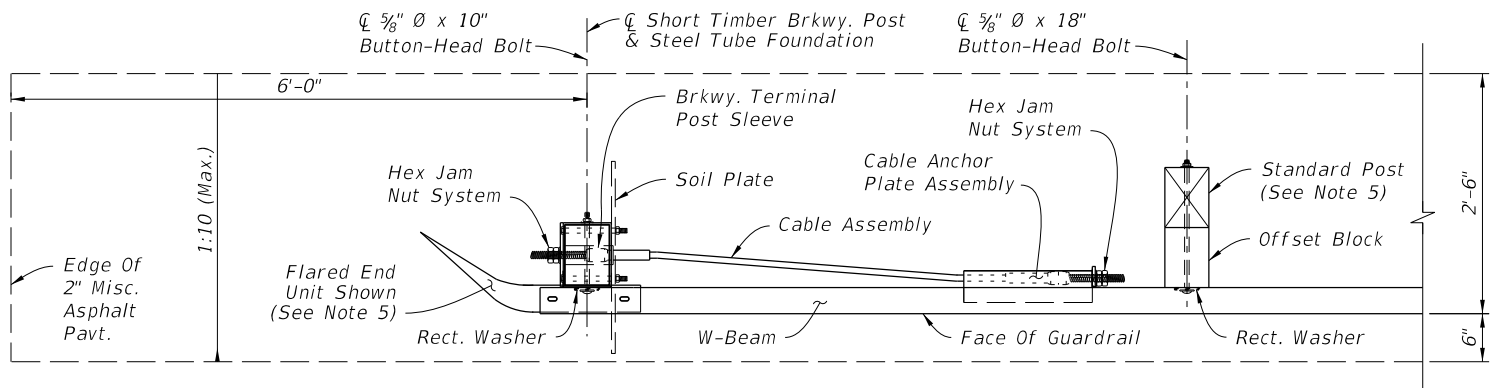
12/31/2015 12:46:01 PM

LAST REVISION 01/01/14	DESCRIPTION:	FDOT FY 2016-17 DESIGN STANDARDS	GUARDRAIL	INDEX NO. 400	SHEET NO. 23 of 26
---------------------------	--------------	--	-----------	------------------	-----------------------

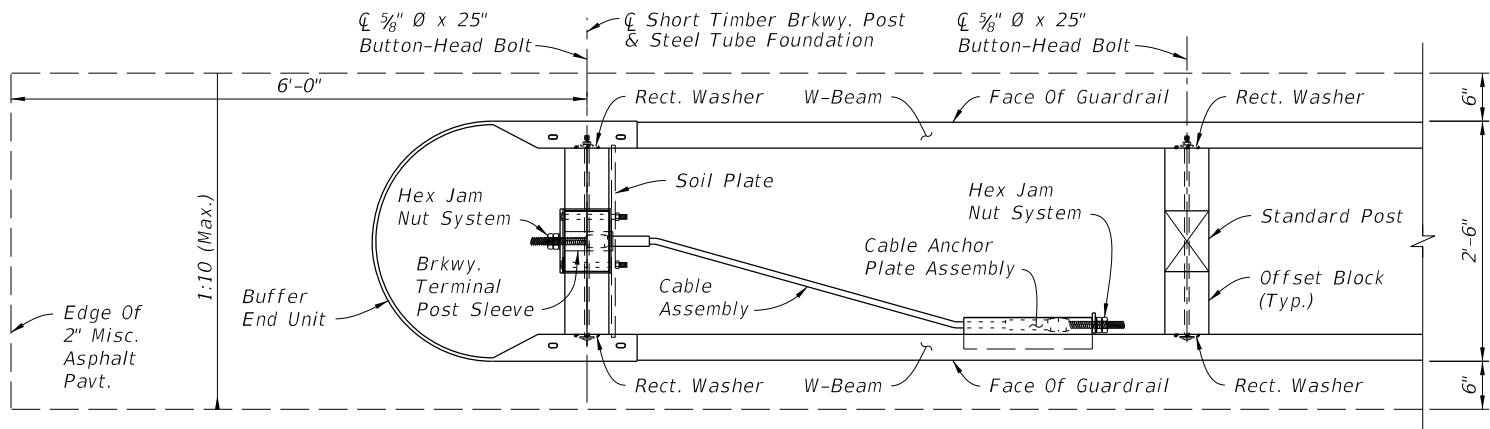
"Type II": Newer Drawing - Formerly Described as Trailing Anchorage shown here, but Inventory this as "Type II" See other Type II Drawing for Notes and Concrete Block version



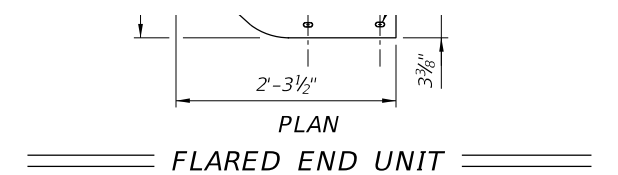
INSTALLED ELEVATION



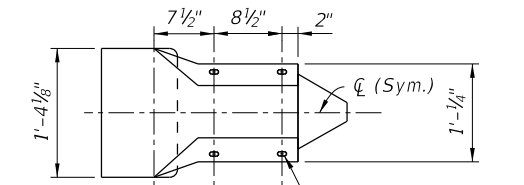
**SINGLE FACE - INSTALLED PLAN
FLARED END UNIT
(Round End Unit Similar)**



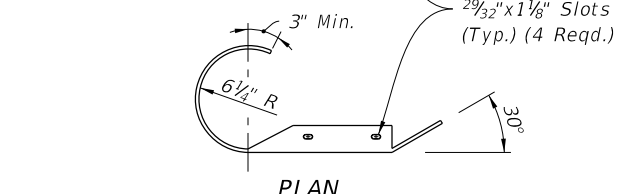
**DOUBLE FACE - INSTALLED PLAN
BUFFER END UNIT**



**PLAN
FLARED END UNIT**

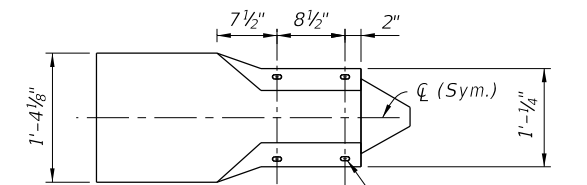


ELEVATION

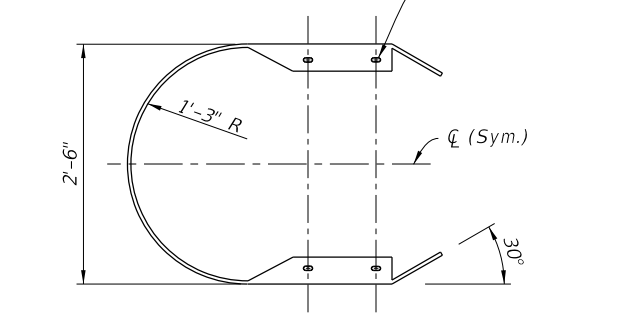


PLAN

ROUNDED END UNIT



ELEVATION



PLAN

BUFFER END UNIT

NOTES:

- COMPONENT DETAILS:** For additional Type II component details, See Sheet 10. For Rectangular Washer details, See Sheet 22.
- END UNITS:** Use materials for end units as defined in Specifications Section 967. End Units are referred to as "End or Buffer Sections" in AASHTO M180.
Lap the Flared End Unit behind the W-Beam; lap the Rounded and Buffered End Units over the face of the W-Beam.
- FOUNDATIONS:** Install Steel Tubes with attached Soil Plates by either of the following methods:
 - Excavate, backfill, and compact material to provide full passive soil resistance to all surfaces of the Tube and Soil Plate.
 - Drive the Tube and Soil Plate as a single unit using a dummy timber post to prevent damage to the Breakaway Post.
- GENERAL GUARDRAIL:** General Guardrail typically includes Panels and Post Spacing as shown on Sheet 2, including parallel and tapered segments. Transitions, Low-Speed Guardrail, or Reduced Post Spacing Guardrail segments may be substituted for the General Guardrail shown herein if indicated in the plans.
- SIDEWALK REQUIREMENTS:** When sidewalks are located adjacent to the End Treatment, install a Rounded End Unit (Flared End Unit not permitted).
When sidewalks or shared use paths are within 4'-0" from the backs of posts, use the Timber Post option shown (including the first post in the General Guardrail segment). Install the Pipe Rail for adjacent Steel Posts if used, as shown on Sheet 20.
- END DELINEATOR:** Mount retroreflective sheeting to the approach face of the End Unit in accordance with Specification Sections 536 and 967.

END TREATMENT - TRAILING ANCHORAGE TYPE II

10:03:02 AM
2/1/2016

LAST REVISION 02/01/16	DESCRIPTION: Index Redevelopment		FY 2016-17 DESIGN STANDARDS	GUARDRAIL	INDEX NO. 400	SHEET NO. 9 of 22
REVISION						