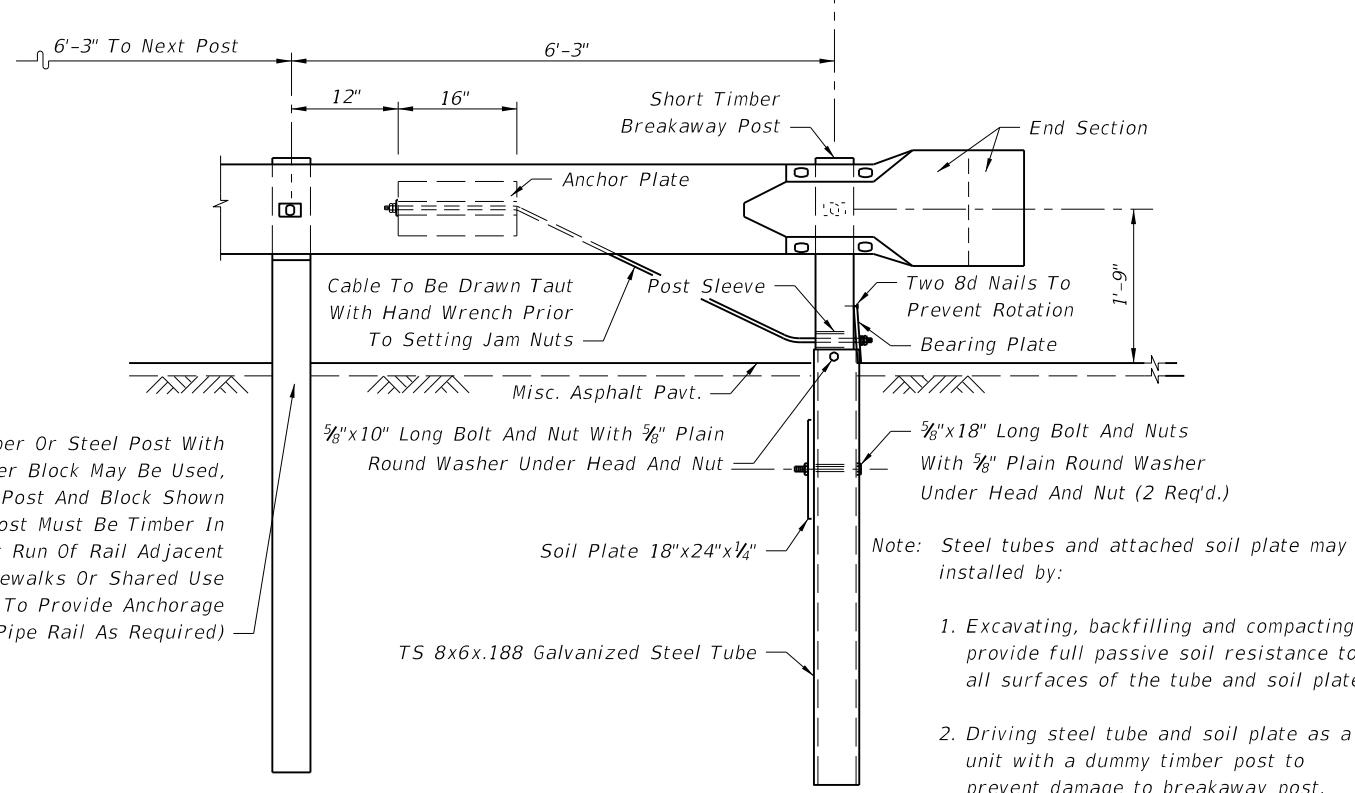
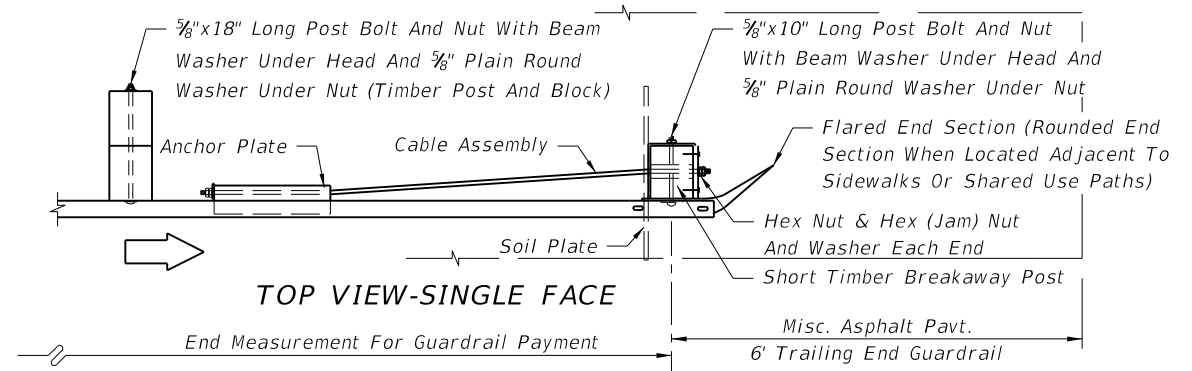
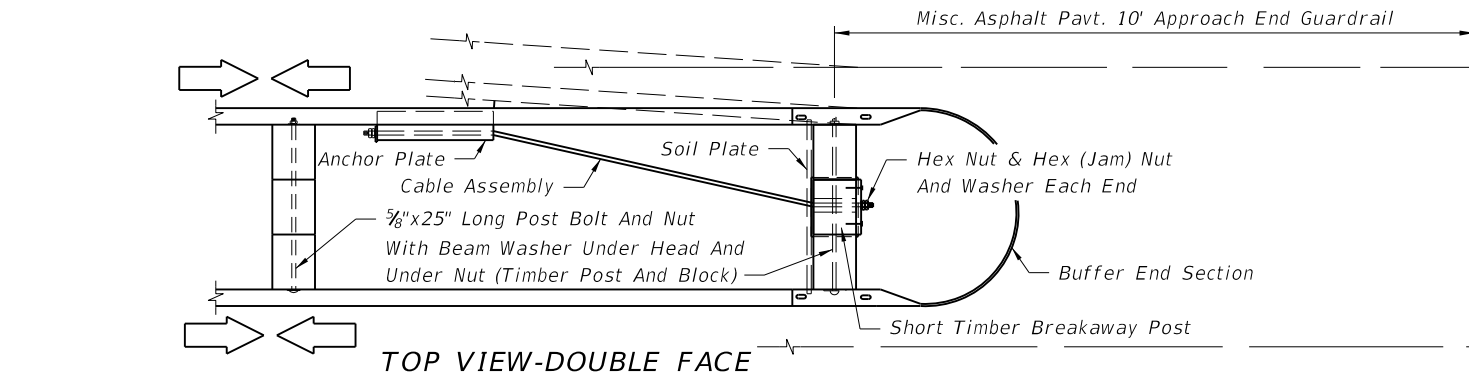


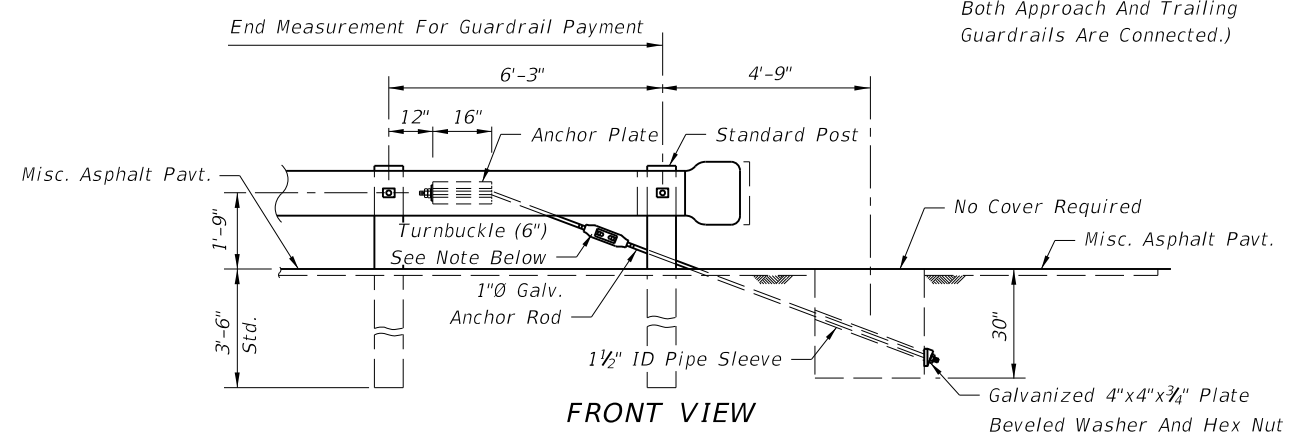
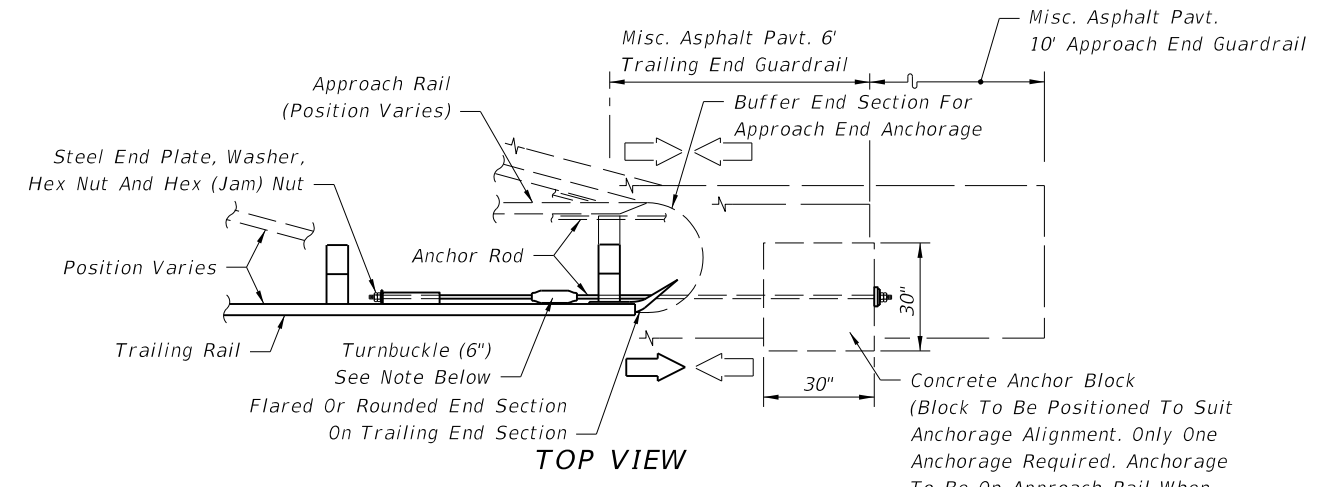
C:\projects\standards\roadway\00400-s\00400.dgn
 rd960rh
 9:47:53 AM
 6/28/2012



FRONT VIEW

The payment for the items of End Anchorage Assembly Type II shall be full compensation for furnishing and installing either the Round or the Buffer End Section, the Beam Anchor Plate, Cable Assembly, Pipe Sleeve, Soil Plate, Bearing Plate, Short Timber Breakaway Post, Offset Blocks and the necessary hardware.

**CABLE ANCHOR OPTION
END ANCHORAGE ASSEMBLY TYPE II**



FRONT VIEW

Turnbuckle shall be field cut, threaded 4" on each end, and metalized in accordance with Sections 562 and 975 of the Standard Specifications. The cost for cutting, threading, metalizing and the turnbuckle shall be included in the contract unit price for Reset Guardrail, LF.

The payment for the items of End Anchorage Assembly Type II shall be full compensation for furnishing and installing the Beam Anchor Plate, Anchor Rod, Pipe Sleeve, Anchor Block, either Flared, Rounded or Buffer End Section, and the necessary hardware.

**CONCRETE ANCHOR BLOCK OPTION
TYPE II NOTES**

1. Unless specified in the plans, the contractor can supply either the cable anchor option or the concrete anchor block option.
2. Type II end anchorage assemblies are approved for all speeds and are intended for use as:
 - a. trailing end anchorages for single face free standing guardrail systems;
 - b. approach end anchorages for single face free standing guardrail systems when end anchorage is located outside of the clear zone; and,
 - c. both approach and trailing ends of double face guardrail systems.

Crash cushions shall be constructed at or in lieu of approach Type II end anchorages located inside the clear zone.

End anchorage for thrie beam guardrail shall be constructed the same as detailed for W-beam, except use thrie beam rail and end section; and the Anchor Plate is to be attached to the bottom corrugation of the thrie beam.

3. These end anchors are to be paid for under the contract unit price for Guardrail, End Anchorage Assembly (Type II), EA as called for in the plans or by permit.

LAST REVISION	07/01/12	DESCRIPTION:		FDOT DESIGN STANDARDS 2013	GUARDRAIL	INDEX NO.	400	SHEET NO.	23
---------------	----------	--------------	---	---------------------------------------	------------------	-----------	-----	-----------	----