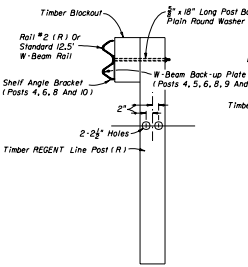


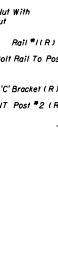
Note: Attach rail to post at posts Nos. 1 and 5 only. W-Beam back-up plates are to be installed at posts Nos. 4, 5, 6, 8, 9 and 10 only. Shelf angle brackets are to be installed at posts Nos. 4, 6, 8 and 10 only.

ELEVATION

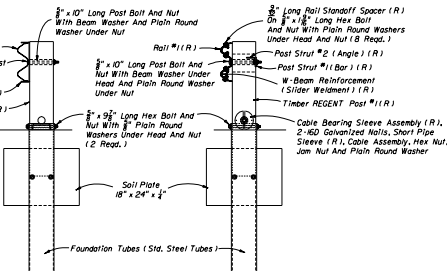


Note: Attach Rail To Post At Post No. 5 Only

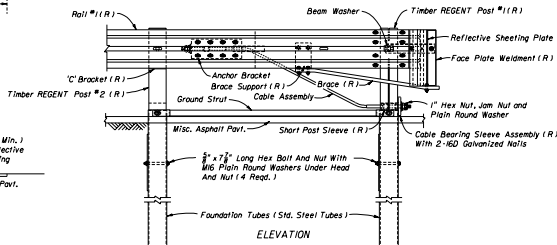
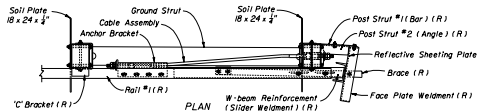
SECTION CC
TYPICAL POST NOS. 3 THRU 10



SECTION BB
POST NO. 2



SECTION AA
POST NO. 1



'REGENT' NOTES

- The REGENT is suitable for all design speeds. The REGENT is intended for use as an approach end guardrail anchorage for shoulder guardrail. Its alignment is a parabolic flare from the normal guardrail alignment with an effective length of 37.5' including two special W-beam panels and one standard W-beam panel outside of any standard guardrail, guardrail transitions or other special treatments.
- This standard drawing is produced by the Florida Department Of Transportation solely for use by the Department and its assignees. This standard drawing provides the general graphics and information necessary to field identify component parts of the REGENT and their incorporation into a whole system.
- This standard drawing is sufficient for plan details for the REGENT when installed in connection with shoulder guardrail and precludes the requirement for shop drawing submittals unless the plans otherwise call for such submittals. The REGENT shall be assembled in accordance with the distributor's detailed drawings, procedures and specifications.
- The first post must be a timber REGENT Post #1 with a steel foundation tube and soli plates; the second post must be a timber REGENT Post #2 with a steel foundation tube and soli plates and, posts Nos. 3 thru 10 must be timber REGENT line posts.
- The suffix (R) indicates components unique to the REGENT System, these components along with bolts, nuts and washers not labeled are to be furnished in the distributor's package.
- The REGENT can not be used in medians where horizontal clearance requires the use of a backrail.
- See the General Notes for galvanizing requirements of metallic components.
- If the plans call for the REGENT at a specific location, substitutions with other end anchorage assemblies will not be permitted unless approved by the Engineer. If the plans call for end anchorage assembly 'flared' at a specific location, the contractor has the option to construct any FDOT approved flared assembly. Where a flared end anchorage is called for in the plans, any approved substitution with a parallel end anchorage will not be eligible for VEGC consideration.
- The REGENT shall be paid for under the contract unit price for Guardrail, End Anchorage Assembly (Flared), EA and shall be full compensation for furnishing and installing all components in accordance with the plans, the distributor's detailed drawings, procedures and specifications and this index.

STATE OF FLORIDA DEPARTMENT OF TRANSPORTATION
ROAD DESIGN

GUARDRAIL

| Revised | Date | Approved By |
|-------------|-------|----------------|
| DESIGNED BY | 07/98 | STATE ENGINEER |
| DRAWN BY | 07/98 | ENGINEER |
| CHECKED BY | 07/98 | CD |

31 of 31
400

END ANCHORAGE ASSEMBLY TYPE REGENT