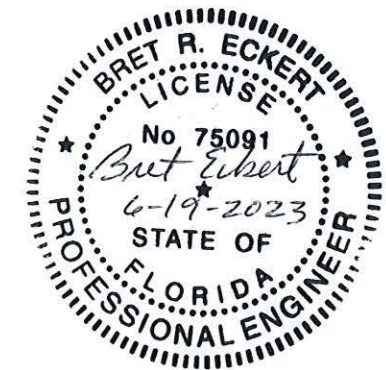


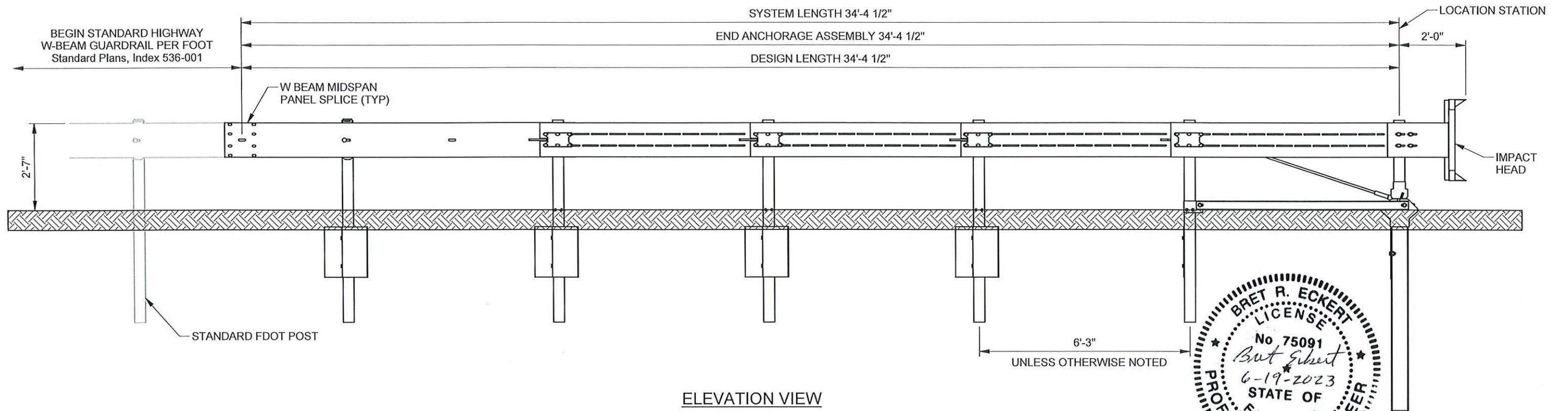
FDOT GENERAL NOTES

1. The Terminal System represented on this drawing is a proprietary design manufactured by Valtir, LLC and marketed under the trade name Median Attenuating TREND® Terminal ("MATT™").
2. This drawing is sufficient for plan details for the MATT™ when installed in connection with double sided guardrail and precludes the requirement for shop drawing submittals unless the plans otherwise call for such submittals. The MATT™ must be assembled in accordance with the manufacturer's detail drawings and current assembly manual as revised and updated at the time of installation.
3. The MATT™, is a steel post configuration. Post 1 with soil plate is an anchor post, Post 2-5 are special Steel Yielding Terminal Post (SYTP®) with soil plates. Post 6 is a standard steel post with soil plate.
4. The MATT™, is designed for use as an approach/departure end treatment for median, roadside or gore guardrail. The beginning length of need point is located at Post 3 (see drawing). The Design Length of the MATT™ is 34'-4 1/2". The MATT™, must be installed as a parallel end treatment. The MATT™, can be attached to guardrail heights from 31" to 27 3/4" with FDOT approved transition.
5. For grading details around the MATT™ see FDOT Standard Plans / see Index 536-001.
6. Site Conditions: A clear and traversable run-out area must be maintained behind the MATT™.

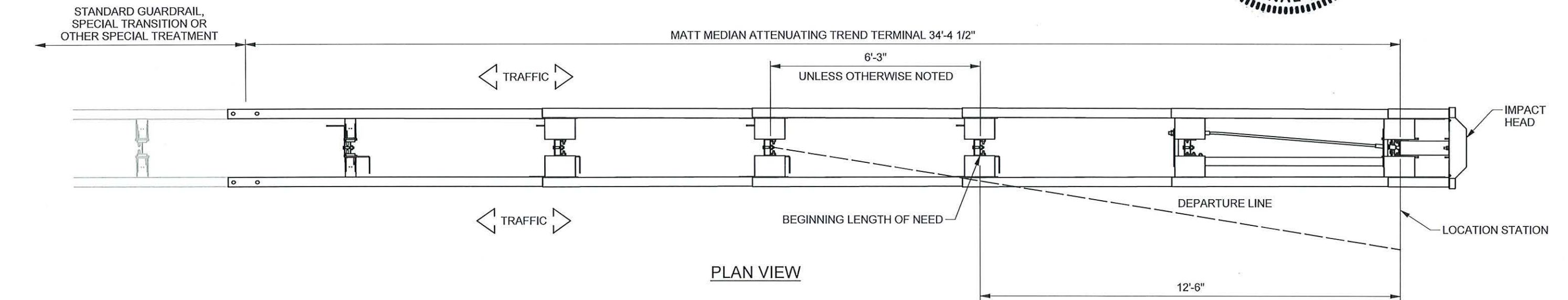
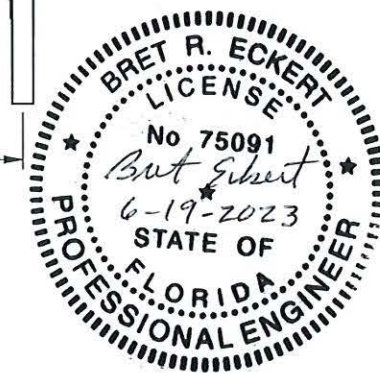
CONTENTS	
SHEET NUMBER	DRAWING NUMBER
1,2,3,4	MEDIAN ATTENUATING TREND TERMINAL MASH (16) END TERMINAL (2'-7" Installation Height / TL-3 Terminal) MODEL: MATT™ (SS 6288)



DRAWN: J. Busbee CHECKED: K. Looney UNLESS OTHERWISE NOTED, DIMENSIONS ARE IN MILLIMETERS [INCH]. DIMENSIONS ACCORDING TO ASME Y14.5-2018 AND QMS-SE-003 UNLESS OTHERWISE SPECIFIED.	DATE: 5/22/2023 DATE: 6/6/2023	MODEL: MATT (SS 6288-REVA) TRAFFIC DIRECTION: BIDIRECTIONAL	MATT™ MEDIAN ATTENUATING TREND TERMINAL MASH (16) END TERMINAL (2'-7" Installation Height / TL-3 Terminal)	
REVISION DESCRIPTION INITIAL RELEASE	DO NOT SCALE DRAWING	ECO DATE REV BY CHK / - - - -	FLORIDA APL NO. 536-006-007 DRAWING: SS6288FL REV: - SHEET: 1 of 4	



ELEVATION VIEW



PLAN VIEW

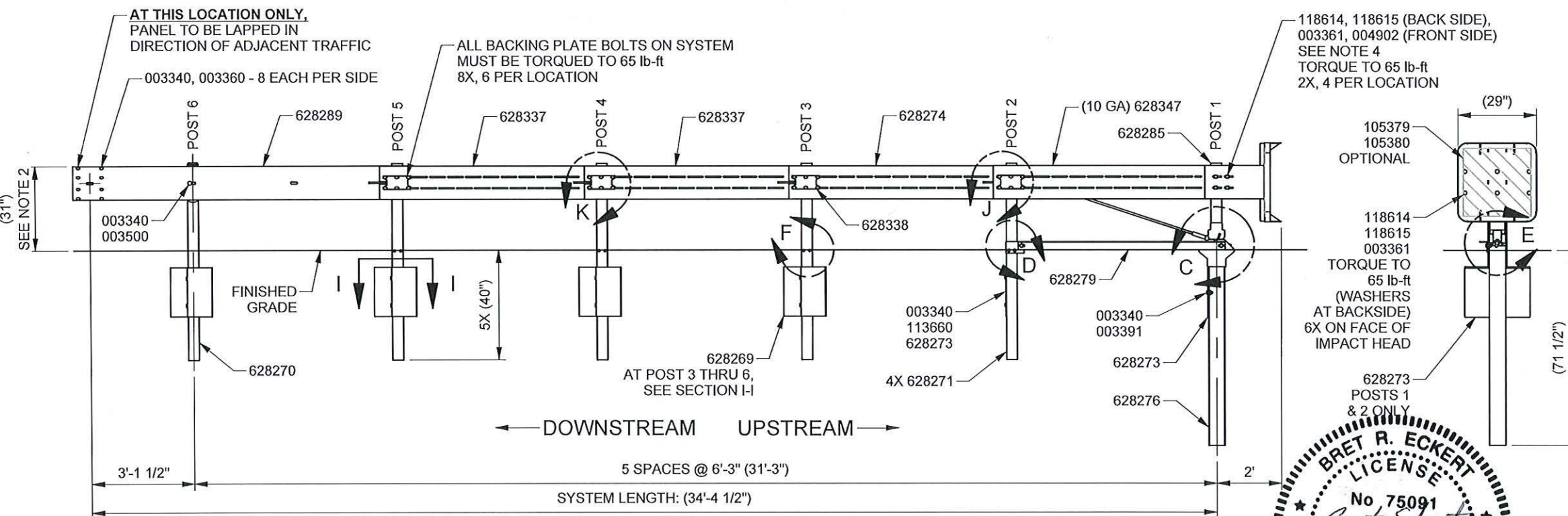
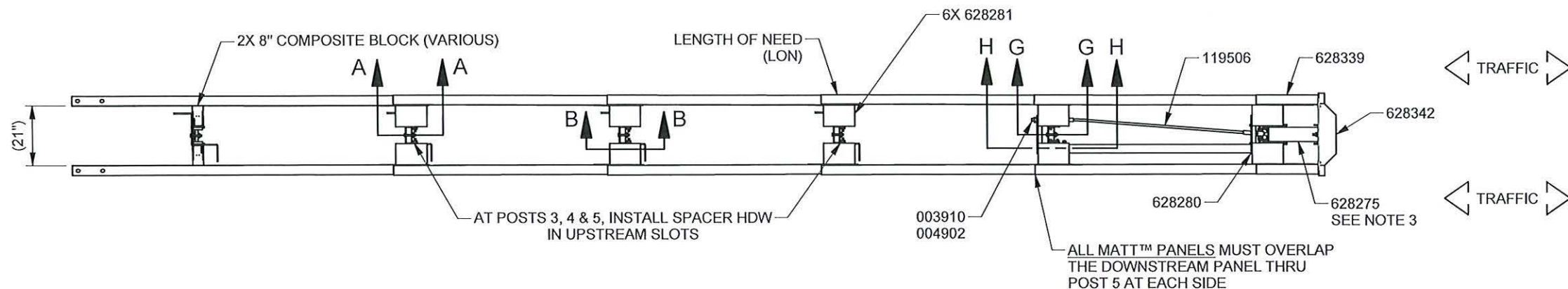
MODEL	SYSTEM WIDTH	SYSTEM LENGTH	DESIGN LENGTH	DESIGN SPEED	TEST LEVEL DESIGNATION
MATT™	29"	34'-4 1/2"	34'-4 1/2"	> 50 MPH	MASH (16) TL-3

DRAWN: J. Busbee	DATE: 5/22/2023	MODEL: MATT (SS 6288-REVA)			
CHECKED: K. Looney	DATE: 6/6/2023	TRAFFIC DIRECTION: BIDIRECTIONAL			
UNLESS OTHERWISE NOTED, DIMENSIONS ARE IN MILLIMETERS (INCH). DIMENSIONS ACCORDING TO ASME Y14.5-2018 AND QMS-SE-003 UNLESS OTHERWISE SPECIFIED.					
REVISION DESCRIPTION	ECO	DATE	REV	BY	CHK
INITIAL RELEASE	/	-	-	-	-

MATT™	
MEDIAN ATTENUATING TREND TERMINAL MASH (16) END TERMINAL (2'-7" Installation Height / TL-3 Terminal)	
FLORIDA APL NO. 536-006-007	
DRAWING: SS6288FL	REV: - SHEET: 2 of 4



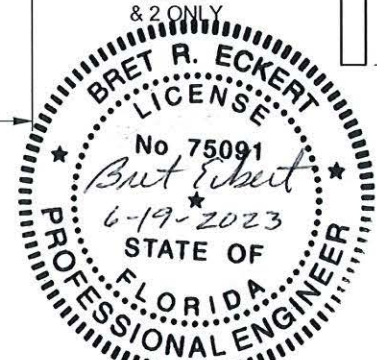
© Valtir, LLC. All rights reserved.



PARTS LIST		
PART NO.	DESCRIPTION	QTY.
628276A	MATT CR POST #1 BOTTOM	1
628271G	6'0POST/W6X8.5/7/S PL/SYT	4
628285A	MATT CR POST #1 TOP	1
628280A	MATT DOUBLE SPACER	2
628281A	MATT SINGLE SPACER	6
628279G	MATT ANGLE GROUND STRUT	1
003340G	5/8" GR HEX NUT	36
033909G	CRP-CBL BRKT FOR CRP PST	1
119506G	CBL 3/4X7'5"/DBL SWG	1
003910G	1" HEX NUT A563	2
628289A	MATT 12G TRANS, W FIN-4	2
628337A	MATT 12G INT, W FIN-3	4
628274G	MATT 12G, W/O FIN-2	2
628342B	MATT IMPACT HEAD	1
628275A	MATT HEAD TUBE	1
628339A	MATT 10G HEAD RAIL	2
628338G	MATT BACKING PLATE	8
118614G	BOLT, RAIL, 5/8X2, A325/G5, G	62
118615G	WASHER, FLAT, 5/8, THICK, G	62
003361G	5/8" HVY HEX NUT A563 DH	66
003360G	5/8"X1.25" GR BOLT	16
003391G	5/8"X1.75" HEX BOLT A325	6
004211G	5/16"X1.75 HXBTA307 1-1/8	2
003240G	WASHER, FLAT, 5/16 W, TY A, G	2
003245G	5/16" HEX NUT A563	2
628348G	ADAPTER, STRUT	1
628347G	RAIL, W-BEAM, 97 3/4, W/ SLOTS	2
004902G	1" ROUND WASHER F436	10
004372G	WASHER, FLAT, 5/8, HARD, TY 1, G	8
003403G	5/8"X2" HEX BOLT A307	6
628270G	6'0 POST, W6X8.5, MATT	1
003500G	BOLT, RAIL, 5/8-11X10	2
113660G	BOLT, HX, 5/8X3 1/2, G5, G	10
628273G	SOIL PLATE, 1/4X18X24, W/ HOLES	2
628269G	SOIL PLATE, MULTI-DIRECTION	4
118009G	WASHER, FLAT, 1/2X1 3/8, G	8
115939G	NUT, HX, 1/2, G	4
113457G	BOLT, HX, 1/2X1 1/2, G2, G	4
VARIOUS	8" NOM DEPTH COMPOSITE BLOCKS	2
SEE TABLE	OPTIONAL DELINEATION	REF

TABLE	
PART NO.	DESCRIPTION
105379B	REF 25X25 BLK/YEL MEDIAN
105380B	REFL 25X25 BLK/YEL GORE

- NOTES:
1. PROPER SITE GRADING MUST BE ACCOMPLISHED BEFORE ASSEMBLY AND IN ACCORDANCE WITH STATE/SPECIFYING AGENCY GUIDELINES AND/OR THE AASHTO ROADSIDE DESIGN GUIDE.
 2. GUARDRAIL INSTALLATION HEIGHT TO BE 31" ABOVE FINISHED GRADE, +1", -0".
 3. PRIOR TO TIGHTENING HARDWARE PUSH IMPACT HEAD UNTIL P/N 628275 TOUCHES UPPER PORTION OF POST 1.
 4. ENSURE 004902 IS APPROXIMATELY CENTERED WITH P/N 118614 PRIOR TO TIGHTENING.
 5. THE INTEGRATED FINS IN THE PROVIDED MATT™ GUARDRAIL PANELS ARE ALWAYS POSITIONED UPSTREAM.
 6. UNDER NO CIRCUMSTANCES SHALL THE GUARDRAIL PANELS WITHIN THE MATT™ BE CURVED OR RADIUS.
 7. ALL 62 LOCATIONS OF 118614 MUST BE TORQUED TO 65 lb-ft.
 8. ALL FASTENERS NOT REQUIRED TO BE TORQUED SHALL BE TIGHTENED TO A SNUG POSITION WITH A MINIMUM OF 2 BOLT THREADS PROTRUDING BEYOND THE NUT.



DRAWN: J. Busbee	DATE: 5/22/2023	MODEL: MATT (SS 6288-REVA)
CHECKED: K. Looney	DATE: 6/6/2023	TRAFFIC DIRECTION: BIDIRECTIONAL
UNLESS OTHERWISE NOTED, DIMENSIONS ARE IN MILLIMETERS (INCH). DIMENSIONS ACCORDING TO ASME Y14.5-2018 AND QMS-SE-003 UNLESS OTHERWISE SPECIFIED.		
REVISION DESCRIPTION	ECO	DATE
INITIAL RELEASE	/	-

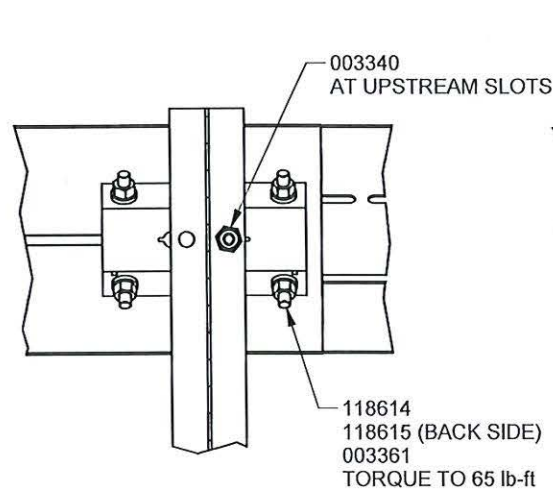
MATT™
 MEDIAN ATTENUATING TREND TERMINAL
 MASH (16) END TERMINAL
 (2'-7" Installation Height / TL-3 Terminal)

FLORIDA APL NO. 536-006-007

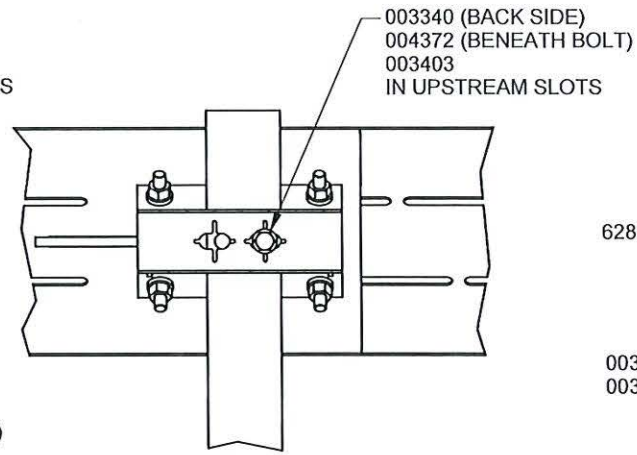
DRAWING: **SS6288FL**



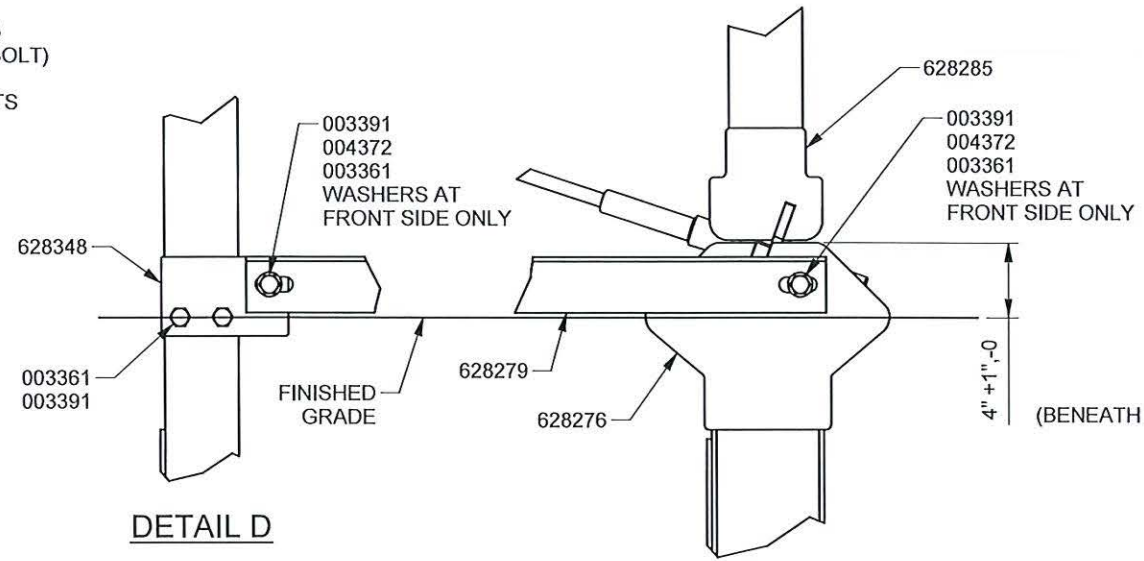
© Valtir, LLC. All rights reserved.



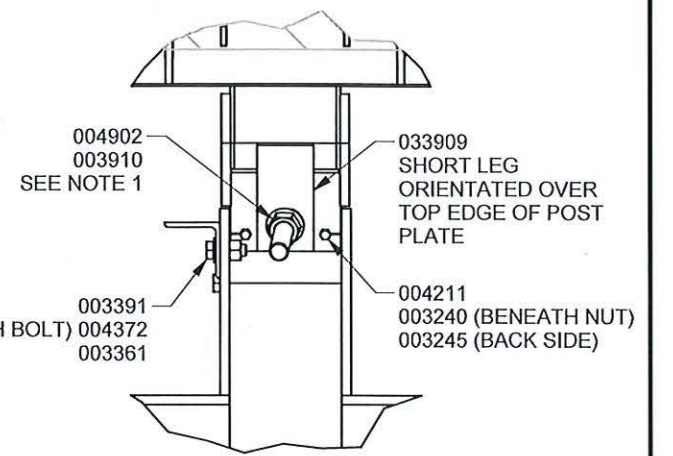
SECTION A-A
TYP AT SINGLE SPACERS ON POSTS 3,4,5
USE UPSTREAM SLOTS ONLY



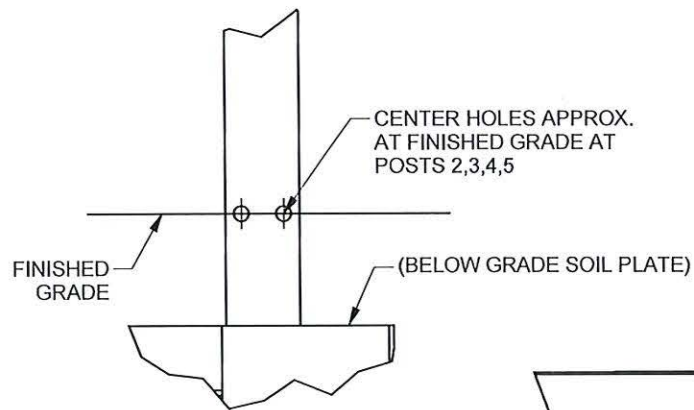
SECTION B-B
TYP AT SINGLE SPACERS ON POSTS 3,4,5
USE UPSTREAM SLOTS ONLY



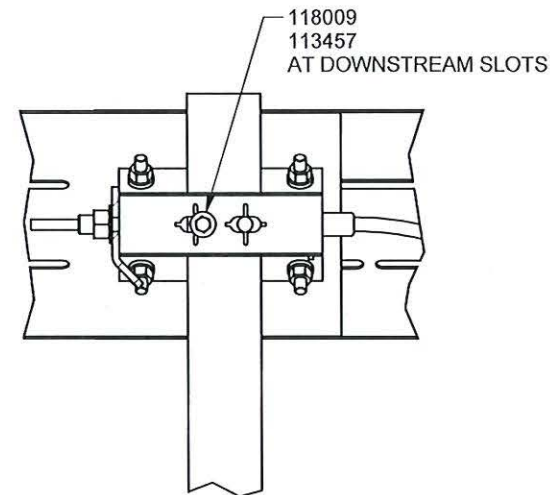
DETAIL D
← DOWNSTREAM UPSTREAM →
DETAIL C



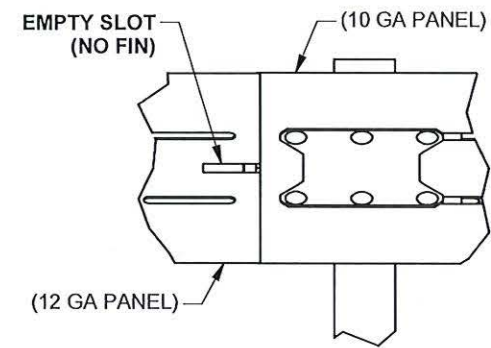
DETAIL E



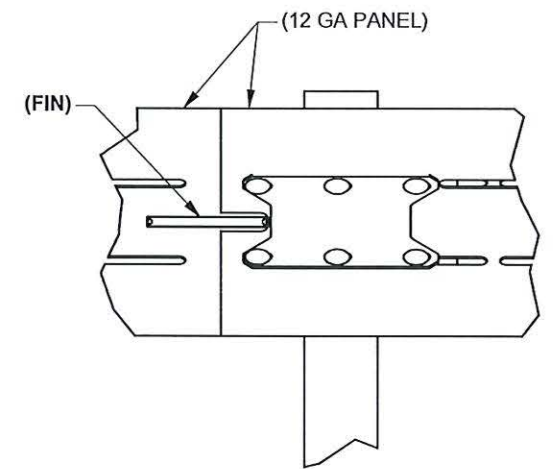
DETAIL F



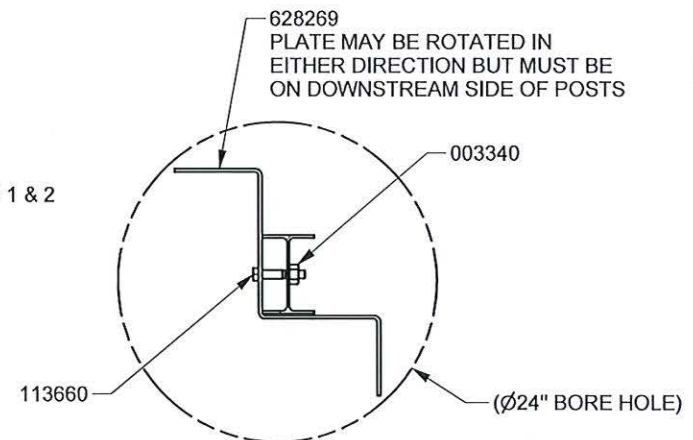
SECTION H-H
TYP AT DOUBLE SPACER ON POSTS 1 & 2



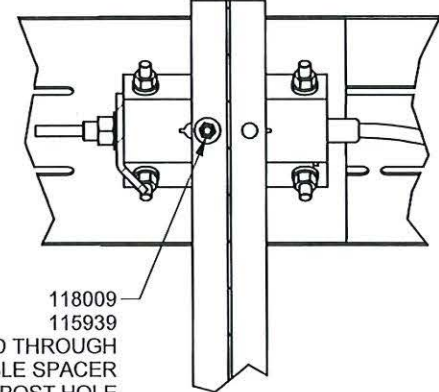
DETAIL J
POST 2 ONLY



DETAIL K
TYP AT POSTS 3, 4, 5



SECTION I-I
TYP ON POSTS 3 THRU 6
UPSTREAM OF SYSTEM →



SECTION G-G
TYP AT DOUBLE SPACER ON POSTS 1 & 2

- NOTES:**
1. TIGHTEN CABLE UNTIL TAUT. CABLE IS CONSIDERED TAUT WHEN IT DOES NOT DEFLECT MORE THAN 1" WHEN PRESSURE IS APPLIED BY HAND IN AN UP AND DOWN DIRECTION. RESTRAIN THE CABLE WITH PIPE WRENCH OR LOCKING PLIERS WHILE TIGHTENING NUT WITH A WRENCH TO PREVENT CABLE FROM TWISTING.
 2. GUARDRAIL INSTALLATION HEIGHT TO BE 31" ABOVE FINISHED GRADE, +1",-0".
 3. REFER TO MATT™ ASSEMBLY MANUAL FOR ADDITIONAL DETAILS.
 4. ONLY ATTACH THE MATT™ DIRECTLY TO OTHER STRONG POST DOUBLE SIDED W/BEAM GUARDRAIL SYSTEMS, SEE MANUAL FOR DETAILS.

DRAWN: J. Busbee	DATE: 5/22/2023	MODEL: MATT (SS 6288-REVA)
CHECKED: K. Looney	DATE: 6/6/2023	TRAFFIC DIRECTION: BIDIRECTIONAL
UNLESS OTHERWISE NOTED, DIMENSIONS ARE IN MILLIMETERS [INCH]. DIMENSIONS ACCORDING TO ASME Y14.5-2018 AND QMS-SE-003 UNLESS OTHERWISE SPECIFIED.		DO NOT SCALE DRAWING
REVISION DESCRIPTION	ECO	DATE
INITIAL RELEASE	/	-

MATT™	
MEDIAN ATTENUATING TREND TERMINAL MASH (16) END TERMINAL (2'-7" Installation Height / TL-3 Terminal)	
FLORIDA APL NO. 536-006-007	
DRAWING: SS6288FL	REV: -
SHEET: 4 of 4	

