

CONTENTS

DESCRIPTION

FLEAT Terminal Single Anchor

DRAWING NAME

FLT-SP-S-375-FL

FLEAT-SP NOTES

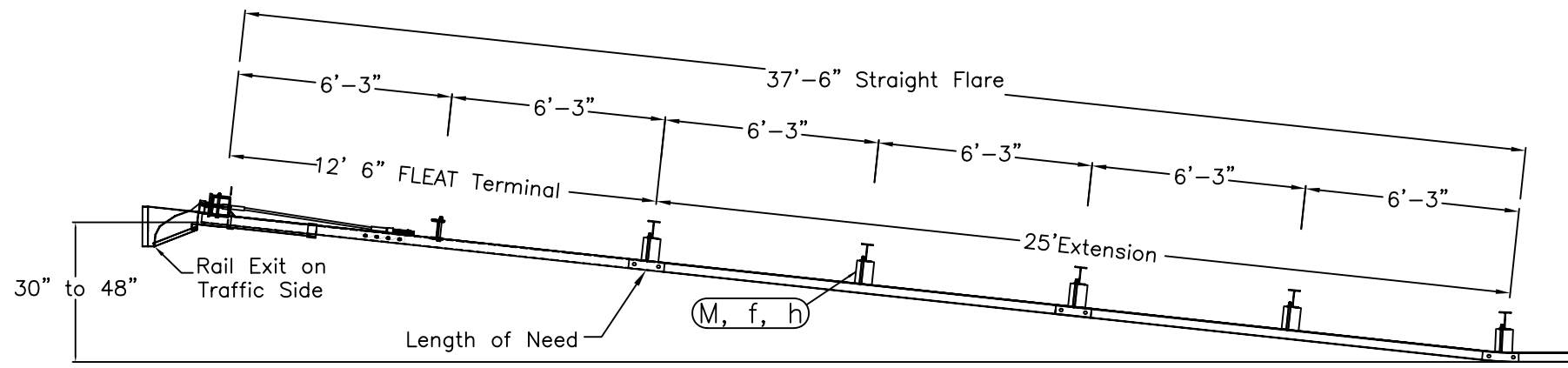
1. The guardrail end anchorage system represented on this drawing is a proprietary design by Road Systems, Inc. and marketed under the trade name FLEAT-SP. Any infringement on the rights of the designer shall be the sole responsibility of the user.
2. This drawing is sufficient for plan details for the FLEAT-SP when installed in connection with shoulder guardrail and precludes the requirement for shop drawing submittals unless the plans otherwise call for such submittals. The FLEAT-SP shall be assembled in accordance with the manufacturer's detailed drawings, procedures and specifications.
3. The FLEAT-SP is intended for use as an approach end guardrail anchorage for shoulder guardrail. The effective length of the FLEAT-SP is 37.5' including one 12.5' special W-Beam panel plus two 12.5' standard W-Beam panels outside of any other standard guardrail, guardrail transitions or other special treatments. The alignment of the FLEAT-SP is a straight flare with an upstream offset of 2.5' TO 4.0' (standard offset of 4' should be used wherever possible).
4. The FLEAT-SP can not be used in medians where horizontal clearance requires the use of a backrail.
5. Posts at location Nos. 1 and 2 are special hinged posts (see Vendor detail). The posts at location Nos. 3, 4, 5, 6, and 7 are standard steel W6" x 8.5# (or 9#) posts.
6. For galvanizing requirements of metallic components see Standard Specification Section 967.
7. For details of shoulder widening, miscellaneous asphalt pavement and pay limits see Index 400.
8. If the plans call for the 'FLEAT-SP' at a specific location, substitution with other end anchorage assemblies will not be permitted unless approved by the Engineer. If the plans call for end anchorage assembly 'flared' at a specific location, the contractor has the option to construct any FDOT approved flared assembly. Where a flared end anchorage is called for in the plans, any approved substitution with a parallel end anchorage will not be eligible for VECP consideration.
9. The FLEAT-SP shall be paid for under the contract unit price for Guardrail, End Anchorage Assembly (Flared), EA and shall be full compensation for furnishing and installing all components in accordance with the plans; the manufacturer's detail drawings, procedures and specifications and this drawing.

STATE OF FLORIDA DEPARTMENT OF TRANSPORTATION

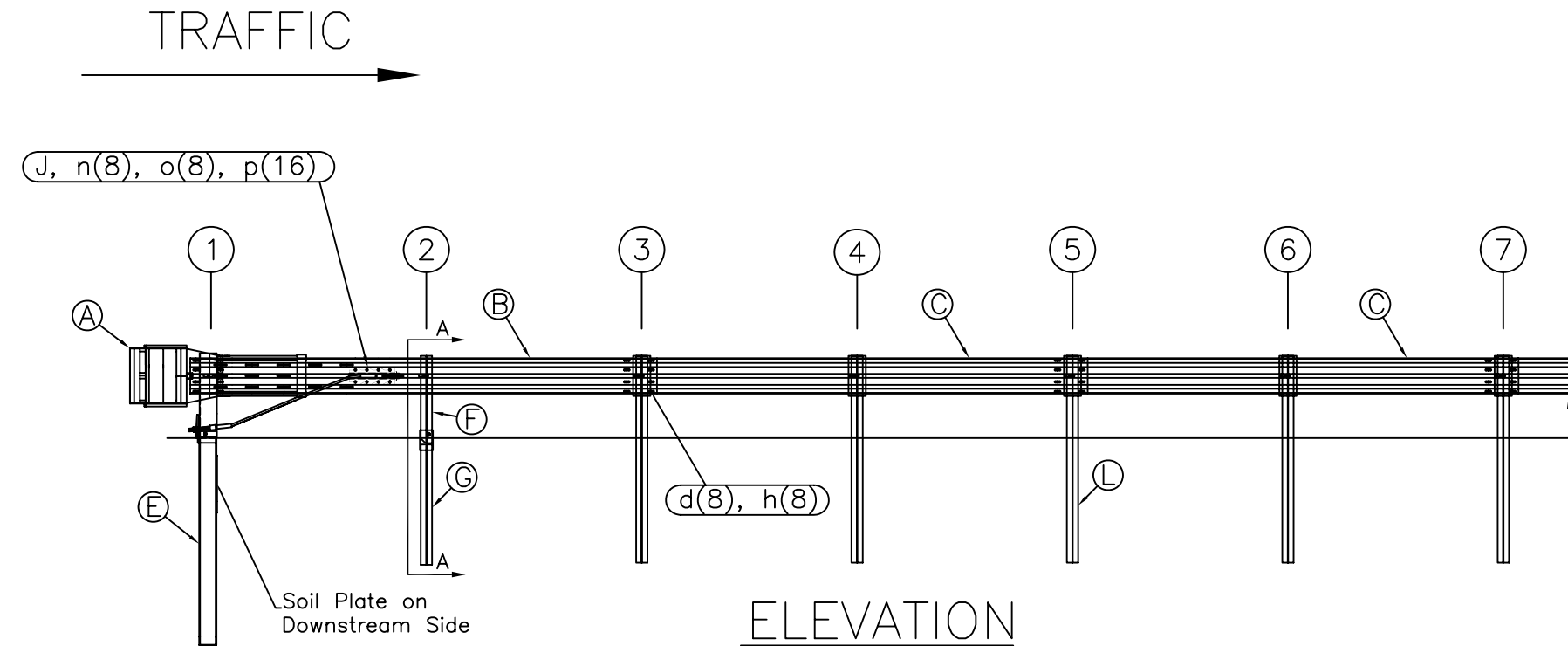
FLEAT-SP

Date:  
August, 2009

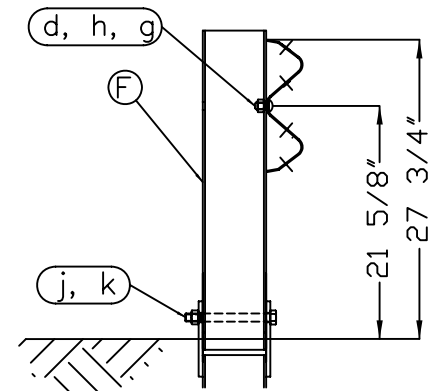
QPL No. S536-0215



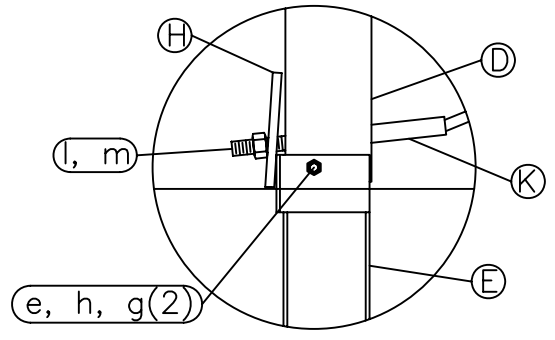
PLAN



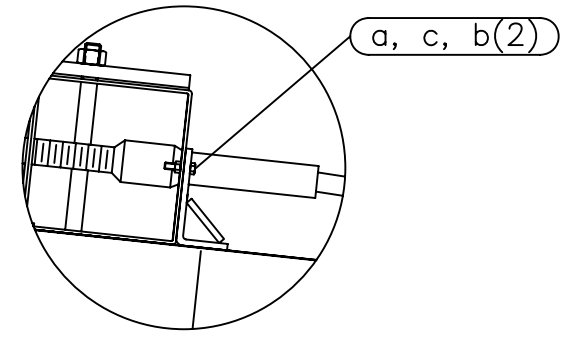
ELEVATION



SECTION A-A  
Post #2



Post #1 Connection Detail



Impact Head Connection Detail

ITEM	QTY	BILL OF MATERIALS	ITEM NO.
A	1	IMPACT HEAD	F3000
B	1	W-BEAM GUARDRAIL END SECTION, 12 Ga.	SF1303
C	2	W-BEAM GUARDRAIL END, 12 Ga.	G1203
D	1	FIRST POST TOP (6X6X $\frac{1}{2}$ " Tube)	TPHP1A
E	1	FIRST POST BOTTOM (6' W6X15)	TPHP1B
F	1	SECOND POST ASSEMBLY TOP	HP2A
G	1	SECOND POST ASSEMBLY BOTTOM	HP3B
H	1	BEARING PLATE	E750
J	1	CABLE ANCHOR BOX	S760
K	1	BCT CABLE ANCHOR ASSEMBLY	E770
L	5	W6X9 GUARDRAIL POST	P621
M	5	TIMBER BLOCKOUT	P675
HARDWARE (ALL DIMENSIONS IN INCHES)			
a	2	5/16 x 1 HEX BOLT GRD 5	B5160104A
b	4	5/16 WASHER	W0516
c	2	5/16 HEX NUT	N0516
d	9	5/8 Dia. x 1 1/4 SPLICE BOLT (POST #2)	B580122
e	1	5/8 Dia. x 9 HEX BOLT GRD 5	B580904A
f	5	5/8 Dia. x 10 H.G.R. BOLT	B581002
g	3	5/8 WASHER	W050
h	15	5/8 Dia. H.G.R. NUT	N050
j	1	3/4 Dia. x 8 1/2 HEX BOLT GRD A449	B340854A
k	1	3/4 Dia. HEX NUT	N030
l	2	1 ANCHOR CABLE HEX NUT	N100
m	2	1 ANCHOR CABLE WASHER	W100
n	8	CABLE ANCHOR BOX SHOULDER BOLT	SB58A
o	8	1/2 A325 STRUCTURAL NUT	N055A
p	16	1 1/16 OD x 9/16 ID A325 STR. WASHER	W050A

GENERAL NOTES:

1. All bolts, nuts, cable assemblies, cable anchors and bearing plates shall be galvanized.
2. The lower sections of the Posts 1&2 shall not protrude more than 4 in above the ground (measured along a 5' cord). Site grading may be necessary to meet this requirement.
3. The lower sections of the hinged posts should not be driven with the upper post attached. If the post is placed in a drilled hole, the backfill material must be satisfactorily compacted to prevent settlement.
4. The breakaway cable assembly must be taut. A locking device (vice grips or channel lock pliers) should be used to prevent the cable from twisting when tightening nuts.
5. See installation manual for detailed installation directions.



**FLEAT Terminal**  
**27-3/4" Top of Rail**  
**Single Anchor**  
**7 Post System**

Drawing Name: FLT-SP-S-375-FL  
 Scale: None

Sheet: 1  
 Date: 04/30/09  
 By: JRR  
 Rev: 0