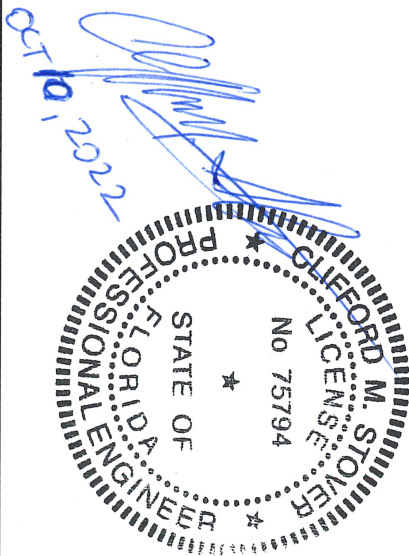


INDEX	
SHEET#	TITLE
1	GENERAL NOTES
2	DELTA CRASH CUSHION
3	DELTA CRASH CUSHION EXPLODED VIEW
4	REBAR FOUNDATION DETAIL
5	TRANSITION TO SINGLE SLOPE
6	TRANSITION TO THREBEAM

GENERAL NOTES FOR THE DELTA CRASH CUSHION SYSTEM

1. THE DELTA CRASH CUSHION PRESENTED ON THIS APPROVED PRODUCT LIST (APL) IS A PROPRIETARY DESIGN BY TRAFIX DEVICES, INC. AND MARKETED UNDER THE NAME DELTA CRASH CUSHION.
2. THE DELTA CRASH CUSHION IS A NON-GATING, REDIRECTIVE CRASH CUSHION WHICH IS SUITED FOR SHIELDING HAZARDS. THE DELTA CRASH CUSHION IS USED FOR PERMANENT APPLICATIONS. THE BEGINNING LENGTH OF NEED SHALL BE AT THE INTERSECTION BETWEEN THE FACE OF THE CRASH CUSHION AND THE DEPARTURE LINE.
3. THE DELTA CRASH CUSHION HAS BEEN EVALUATED AND PASSED TO MASH TL3 CRASH TEST CRITERIA
4. THE DELTA CRASH CUSHION SHALL BE ASSEMBLED AND INSTALLED IN ACCORDANCE WITH THE MANUFACTURE'S DETAILED DRAWINGS, PROCEDURES, SPECIFICATIONS, PRODUCT MANUAL OR INSTALLATION GUIDE. INFORMATION AND COPIES OF THE MANUAL ARE AVAILABLE ON THE APPROVED PRODUCT LIST (APL).
5. THE INSIDE WIDTH OF THE DELTA IS 23" WIDE AND CAN SHIELD A RIGID OBJECT 23" WIDE OR LESS WITHOUT A TRANSITION, UNLESS THERE IS COUNTER FLOW TRAFFIC.
6. FOUNDATION SHALL HAVE A MINIMUM COMPRESSIVE STRENGTH OF 4000 PSI AND EITHER 8" THICK UNREINFORCED OR 6" THICK REBAR REINFORCED PORTLAND CEMENT CONCRETE.
7. ALL METALLIC COMPONENTS SHALL MEET THE GALVANIZING REQUIREMENT FOR GUARDRAIL, FDOT SPECIFICATION SECTION 967.
8. INSTALL DELTA CRASH CUSHION PARALLEL TO THE APPROACH TRAVEL LANES AND CROSS SLOPES OF 1:10 OR FLATTER.
9. UNITS OF MEASURE ARE IN ENGLISH UNITS

Revision		Date	Orig.	Approval
Rev.	Description			
A	Initial Release	01/03/22	R/R	GM
B	Transition Length Removed (Sheet 6)	09/29/22	CJ	FA

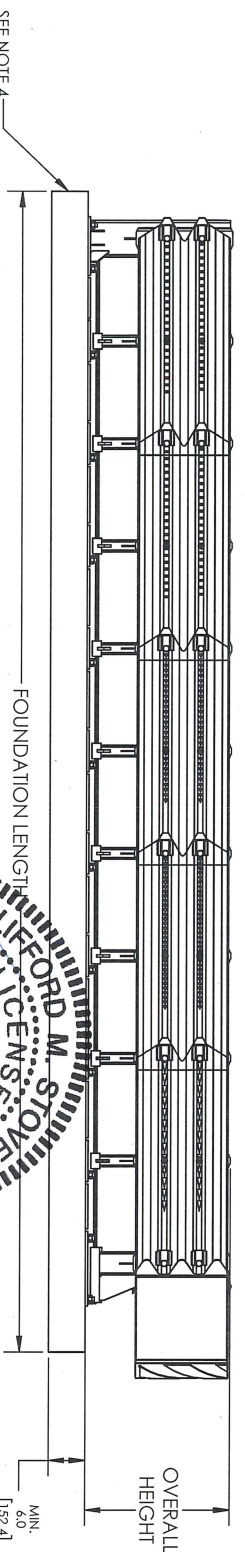
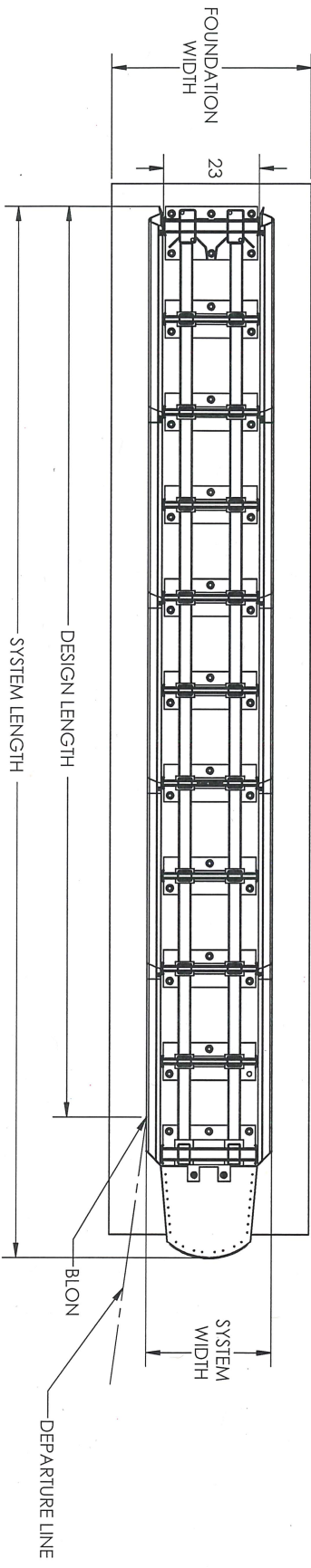


<small>NOTES: CONTRACTOR REQUIRED TO OBTAIN APPROVED PRODUCT LIST (APL) FROM TRAFIX DEVICES, INC.</small>			
<small>160 Avenida La Pava Suite 200 St. Petersburg, FL 34773 (941) 561-5663 Fax (941) 361-9205 www.trafixdevices.com</small>		TITLE: DELTA CRASH CUSHION, MASH TL3, STATE OF FLORIDA DOT	
<small>DESIGNED BY:</small> T. STAMERZ	<small>DATE:</small> 01/03/22	<small>SIZE:</small> B	<small>DRAWING NO.:</small> 544-001-006
<small>CHECKED BY:</small> GM	<small>DATE:</small> 01/03/22	<small>REV:</small> B	<small>SHEET 1 OF 6</small>
<small>APPROVED BY:</small> GM	<small>DATE:</small> 01/03/22		

MASH TL3*					
MODEL NUMBER 75000 SERIES					
SYSTEM LENGTH	SYSTEM WIDTH	SYSTEM HEIGHT	FOUNDATION LENGTH	FOUNDATION WIDTH	GUARDRAIL DESIGN LENGTH
252"	30"	31.5"	252"	48"	287"

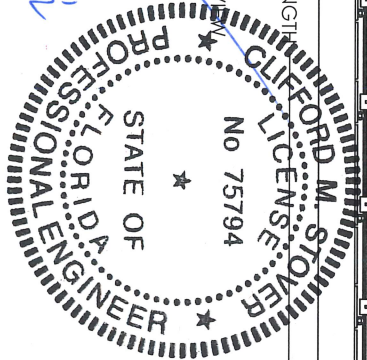
* TL-3 CRASH CUSHIONS MAY BE USED FOR ALL DESIGN SPEEDS.

REV	ECO	DESCRIPTION	DATE	ORIG.	APPROVED
A	---	Initial Release	01/03/22	RLR	GM
B	---	Transition Length Removed (Sheet 6)	09/29/22	CJ	FA



4. FOUNDATION SHALL BE MINIMUM 6 IN. REINFORCED OR 8 IN. UNREINFORCED RCC CONCRETE AND HAVE A MINIMUM COMPRESSIVE STRENGTH OF 4000 PSI
 3. REAR FENDER PANELS MUST BE ABLE TO TELESCOPE REARWARD WITHOUT OBSTRUCTION FOR 33 IN.
 2. UNITS: INCHES
 1. FINISH: GALVANIZED
- NOTES: UNLESS OTHERWISE SPECIFIED

Signature
OCT 2022



TRAFFIX DEVICES INC. 160 Avenida La Plata, Suite 300, Ft. Lauderdale, FL 33309
 (954) 561-5663 FAX (954) 361-9205 www.traffixdevices.com

TRAFFIX DEVICES INC. 160 Avenida La Plata, Suite 300, Ft. Lauderdale, FL 33309
 (954) 561-5663 FAX (954) 361-9205 www.traffixdevices.com

TITLE: DELTA CRASH CUSHION, MASH TL3, STATE OF FLORIDA DOT

SIZE: B DRAWING NO.: 544-001-006 REV: B

DATE: 01/03/22 DATE: 09/29/22

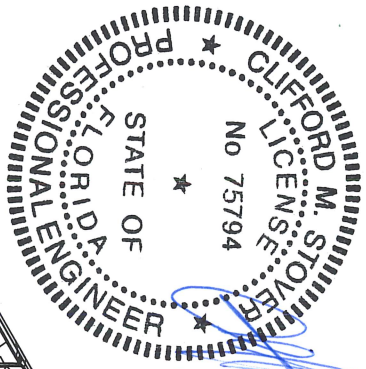
DESIGNED BY: GM CHECKED BY: GM APPROVED BY: GM

DATE: 01/03/22 DATE: 09/29/22

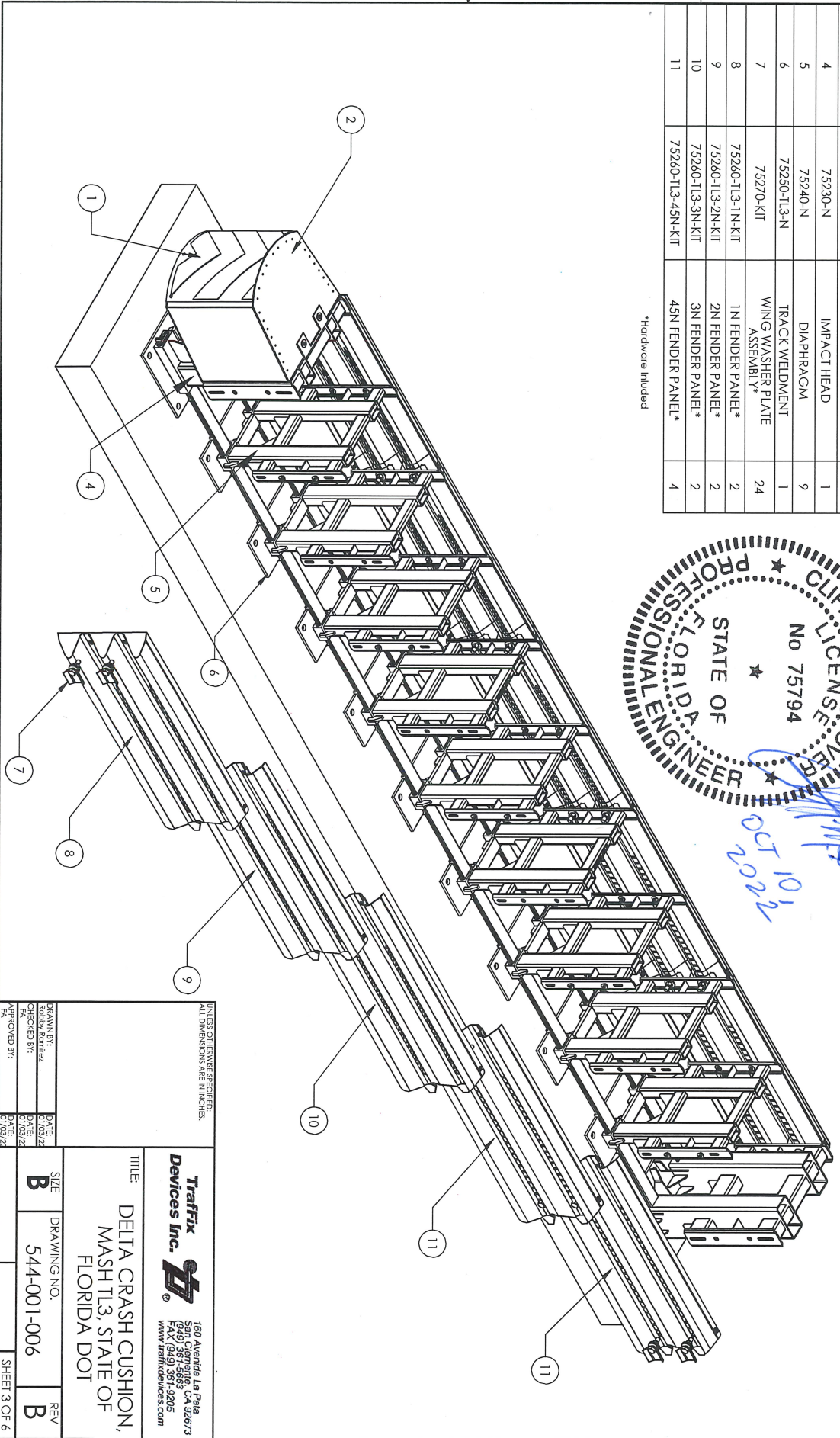
SHEET 2 OF 6

ITEM NUMBER	PART NUMBER	DESCRIPTION	QTY.
1	75221-MO-4Y	SHEETING PANEL	1
2	75220-N-4Y	ENERGY ATTENUATION MODULE	1
3	75208-CA	ANCHOR BOLT ASSEMBLY	39
4	75230-N	IMPACT HEAD	1
5	75240-N	DIAPHRAGM	9
6	75250-TL3-N	TRACK WELDMENT	1
7	75270-KIT	WING WASHER PLATE ASSEMBLY*	24
8	75260-TL3-1N-KIT	1N FENDER PANEL*	2
9	75260-TL3-2N-KIT	2N FENDER PANEL*	2
10	75260-TL3-3N-KIT	3N FENDER PANEL*	2
11	75260-TL3-4SN-KIT	4SN FENDER PANEL*	4


*Hardware Included



REV	ECO	DESCRIPTION	DATE	ORIG.	APPROVED
A	---	Initial Release	01/03/22	RLR	GM
B	---	Transition Length Removed (Sheet 6)	09/29/22	CJ	FA



ALL DIMENSIONS UNLESS OTHERWISE SPECIFIED. ALL DIMENSIONS ARE IN INCHES.

Traffix Devices Inc.

 160 Avenida La Pava
 Suite 200
 (949) 361-5663
 FAX (949) 361-9205
 www.traffixdevices.com

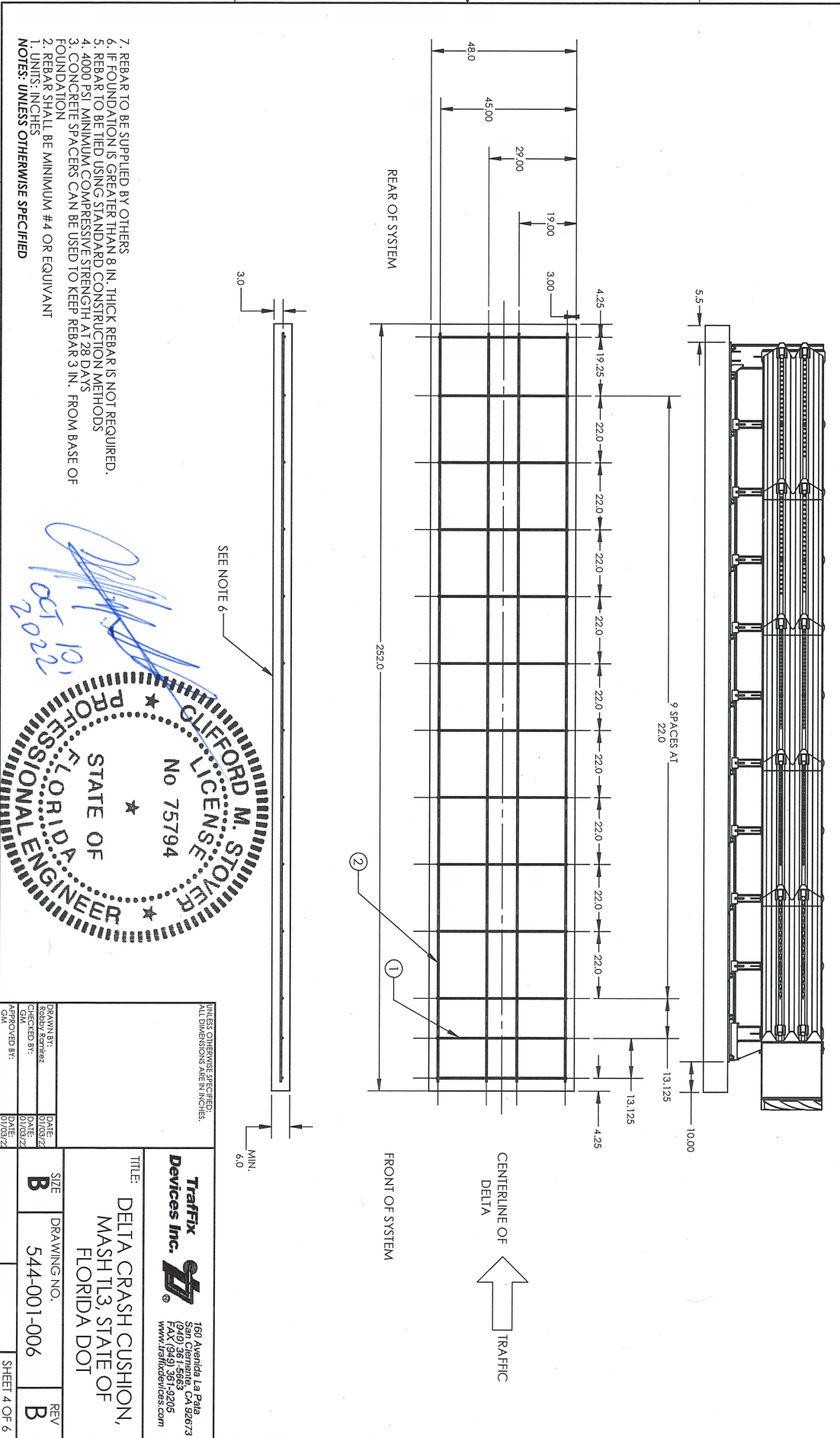
TITLE: DELTA CRASH CUSHION,
 MASH TL3, STATE OF
 FLORIDA DOT

DRAWN BY: [blank]	DATE: [blank]	SIZE: B	DRAWING NO.: 544-001-006	REV: B
CHECKED BY: [blank]	DATE: 01/03/22			
APPROVED BY: [blank]	DATE: 01/03/22			

SHEET 3 OF 6

Item No.	Length	QTY.
1	43 in.	13
2	246 in.	4

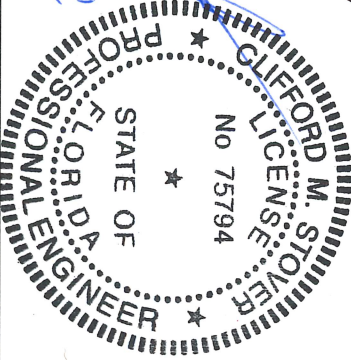
REV	ECO	DESCRIPTION	DATE	ORIG.	APPROVED
A	---	Initial Release	01/03/22	RLR	GM
B	---	Transition Length Removed (Sheet 6)	09/29/22	CJ	FA



7. REBAR TO BE SUPPLIED BY OTHERS
6. IF FOUNDATION IS GREATER THAN 8 IN. THICK REBAR IS NOT REQUIRED.
5. REBAR TO BE TIED USING STANDARD CONSTRUCTION METHODS
4. 4000 PSI MINIMUM COMPRESSIVE STRENGTH AT 28 DAYS
3. CONCRETE SPACERS CAN BE USED TO KEEP REBAR 3 IN. FROM BASE OF FOUNDATION
2. REBAR SHALL BE MINIMUM #4 OR EQUIVANT
1. UNITS: INCHES

SEE NOTE 6

OCT 10, 2022



UNLESS OTHERWISE SPECIFIED, ALL DIMENSIONS ARE IN INCHES.

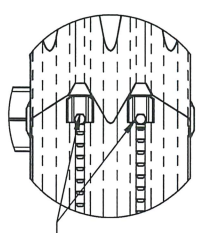
Traffix Devices Inc.
 160 Avenida La Pal
 San Clemente, CA 92673
 (949) 361-5663
 FAX (949) 361-9205
 www.traffixdevices.com

TITLE: DELTA CRASH CUSHION, MASH TL3, STATE OF FLORIDA DOT

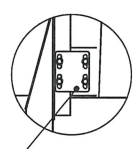
DESIGNED BY:	DATE:	SIZE:	DRAWING NO.:	REV:
CHECKED BY:	DATE:	B	544-001-006	B
APPROVED BY:	DATE:			

SHEET 4 OF 6

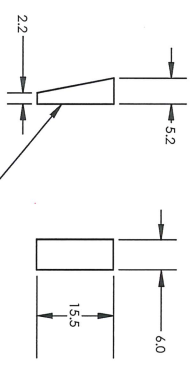
REV	ECO	DESCRIPTION	DATE	ORIG.	APPROVED
A	---	Initial Release	01/03/22	RLR	GM
B	---	Transition Length Removed (Sheet 6)	09/29/22	CJ	FA



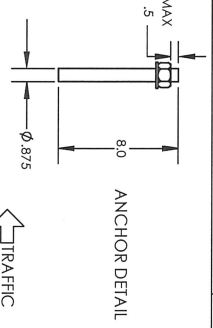
DETAIL A
SCALE 1 : 15



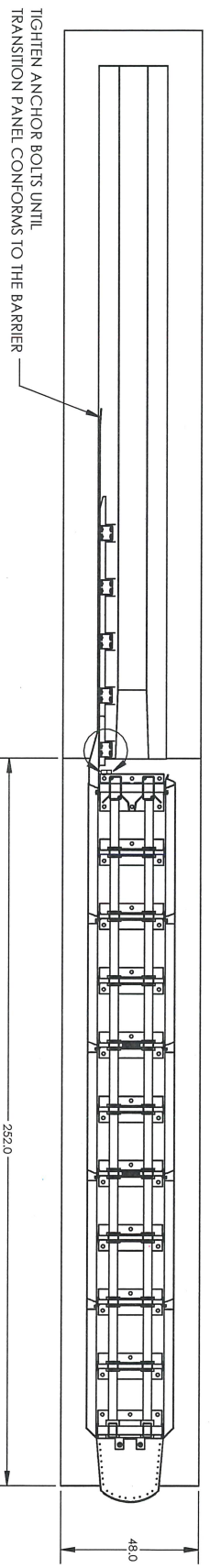
DETAIL B
SCALE 1 : 15



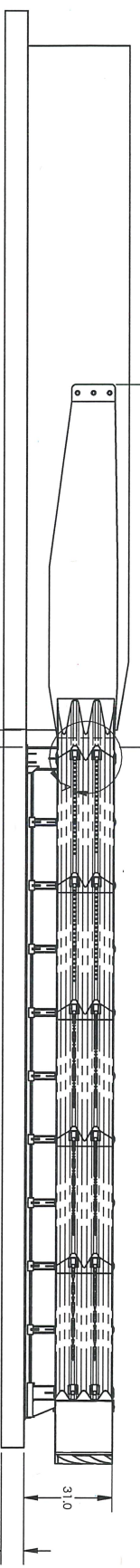
BLOCK DETAIL



ANCHOR DETAIL



PLAN VIEW



ELEVATION VIEW

8. IT IS RECOMMENDED THAT BLOCKOUTS SHOULD BE USED UNTIL THE GAP BETWEEN THE TRANSITION AND BARRIER IS REDUCED TO 2.5"
7. IT IS RECOMMENDED THAT THE BARRIER BE TRIMMED AT A 6:1 RATIO IF THE BARRIER HEIGHT EXCEEDS 32 IN.
6. ONLY USE TRAFFEX APPROVED EPOXIES AND ANCHORS
5. REAR FENDER PANELS MUST BE ABLE TO TELESCOPE REARWARD WITHOUT OBSTRUCTION FOR 35 IN.
4. TRANSITION PANEL MUST BE NESTED UNDER THE REAR 45N FENDER PANEL IN ORDER FOR THE DELTA TO PROPERLY OPERATE. WINGWASHER ASSEMBLIES ARE USED TO MOUNT THE TRANSITION PANEL TO THE DELTA.
3. BLOCKOUTS TO BE SUPPLIED BY OTHERS
2. FOUNDATION REQUIREMENTS: 6 IN. REINFORCED OR 8 IN. NON-REINFORCED PC CONCRETE HAVING A MINIMUM COMPRESSIVE STRENGTH OF 4000 PSI IN 28 DAYS. FOUNDATION CROSS-SLOPE SHOULD NOT EXCEED 10:1 OR 10%.
1. UNITS: INCHES

NOTES: UNLESS OTHERWISE SPECIFIED



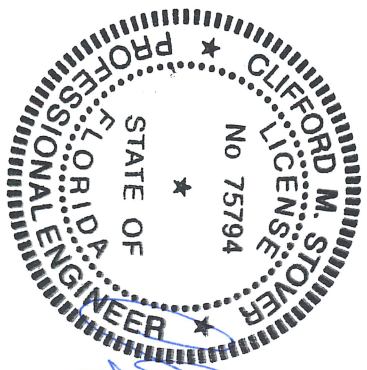
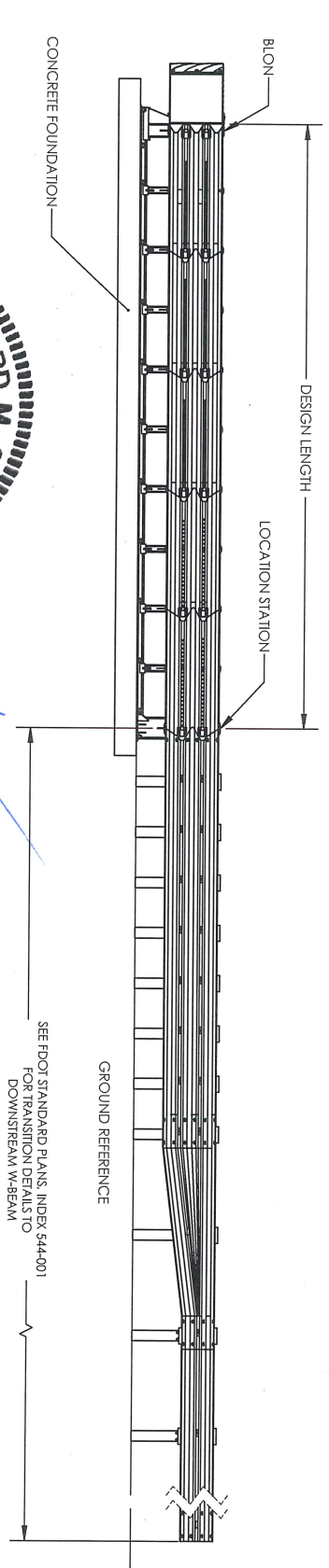
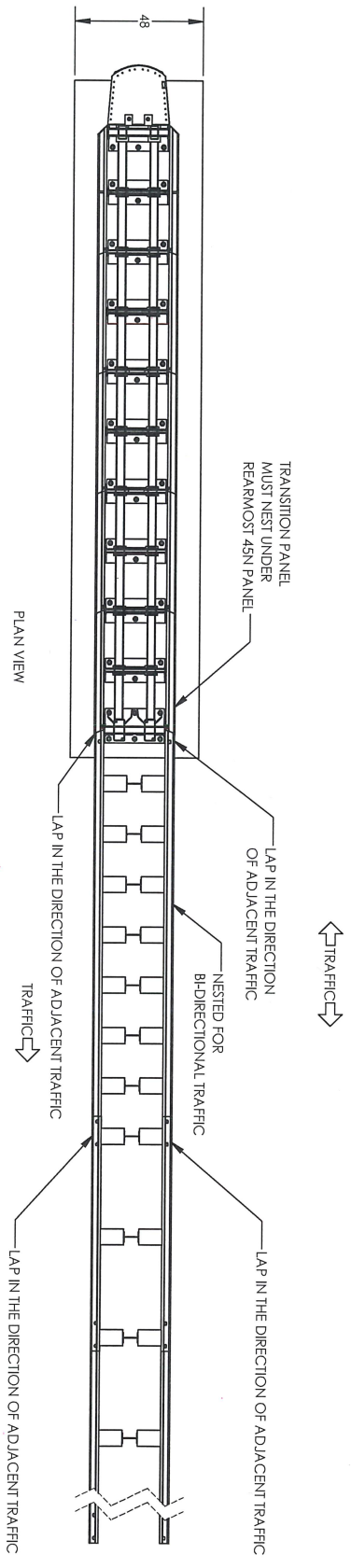
UNLESS OTHERWISE SPECIFIED, ALL DIMENSIONS ARE IN INCHES.

Traffix Devices Inc.
 150 Avenida La Paz
 San Clemente, CA 92673
 (949) 361-5563
 FAX (949) 361-9205
 www.traffixdevices.com

TITLE: **Delta Single Slope Transition**

DESIGNED BY: RBB	DATE: 01/28/22	SIZE: B	DRAWING NO.: 544-001-006	REV: B
CHECKED BY: GM	DATE: 07/28/22	APPROVED BY: GM		SHEET 5 OF 6

REV	ECCO	DESCRIPTION	DATE	ORIG.	APPROVED
A	---	Initial Release	01/03/22	RJR	GM
B	---	Transition Length Removed	09/29/22	CJ	FA



UNLESS OTHERWISE SPECIFIED, ALL DIMENSIONS ARE IN INCHES.

Traffix Devices Inc.
 160 Avenida La Paja
 San Clemente, CA 92673
 (949) 265-9205
 www.traffixdevices.com

TITLE: DELTA CRASH CUSHION, MASH TL3, STATE OF FLORIDA DOT

DRAWN BY: Robby Romez	DATE: 01/03/22	SIZE: B	DRAWING NO.: 544-001-006	REV: B
CHECKED BY: GM	DATE: 07/03/22			
APPROVED BY: GM	DATE: 07/03/22			

1. Units: inches
 NOTES: Unless Otherwise Specified

8 7 6 5 4 3 2 1