

SR-9/I-95 Multimodal Master Plan

(from Palm Beach/Martin County Line to Indian River/Brevard County Line)

MASTER PLAN SUMMARY

*MARTIN MPO
POLICY BOARD MEETING*

June 15, 2020

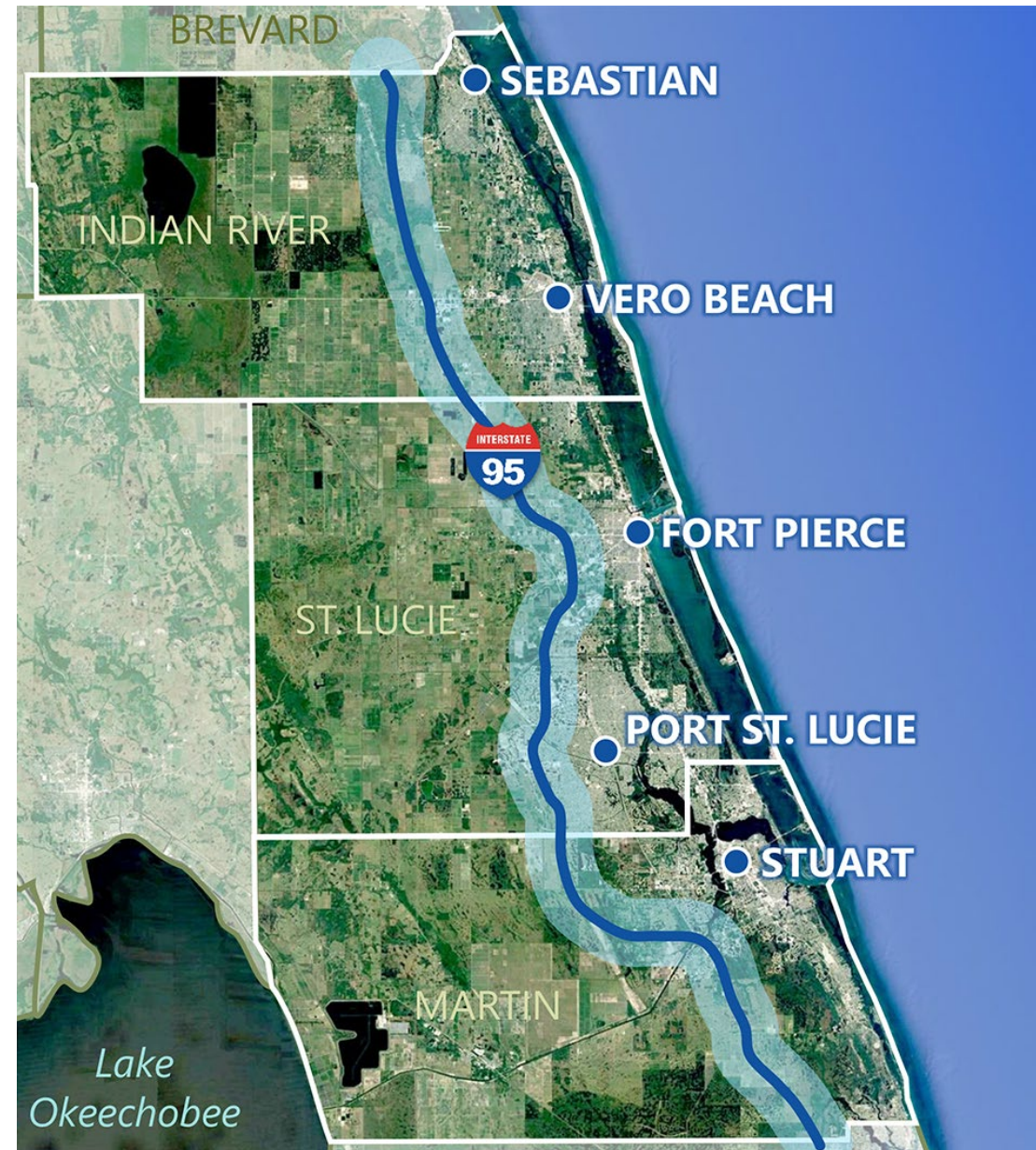


Meeting Purpose

- » Project Overview
- » Objectives
- » I-95 Improvement Needs
- » Interchange Improvement Needs
- » Work Program Costs and Phases
- » Next Steps
- » Project Schedule

Project Overview

- » Project Limits & Study Area
 - 71-mile I-95 corridor
 - 6 lanes; 8 lanes from SR 70 to Indrio Rd
 - 15 interchanges including Oslo Road interchange
 - Explore Multimodal Alternatives
 - Identify Needs and Their Timing
 - Short Term
 - Long Term (2045)



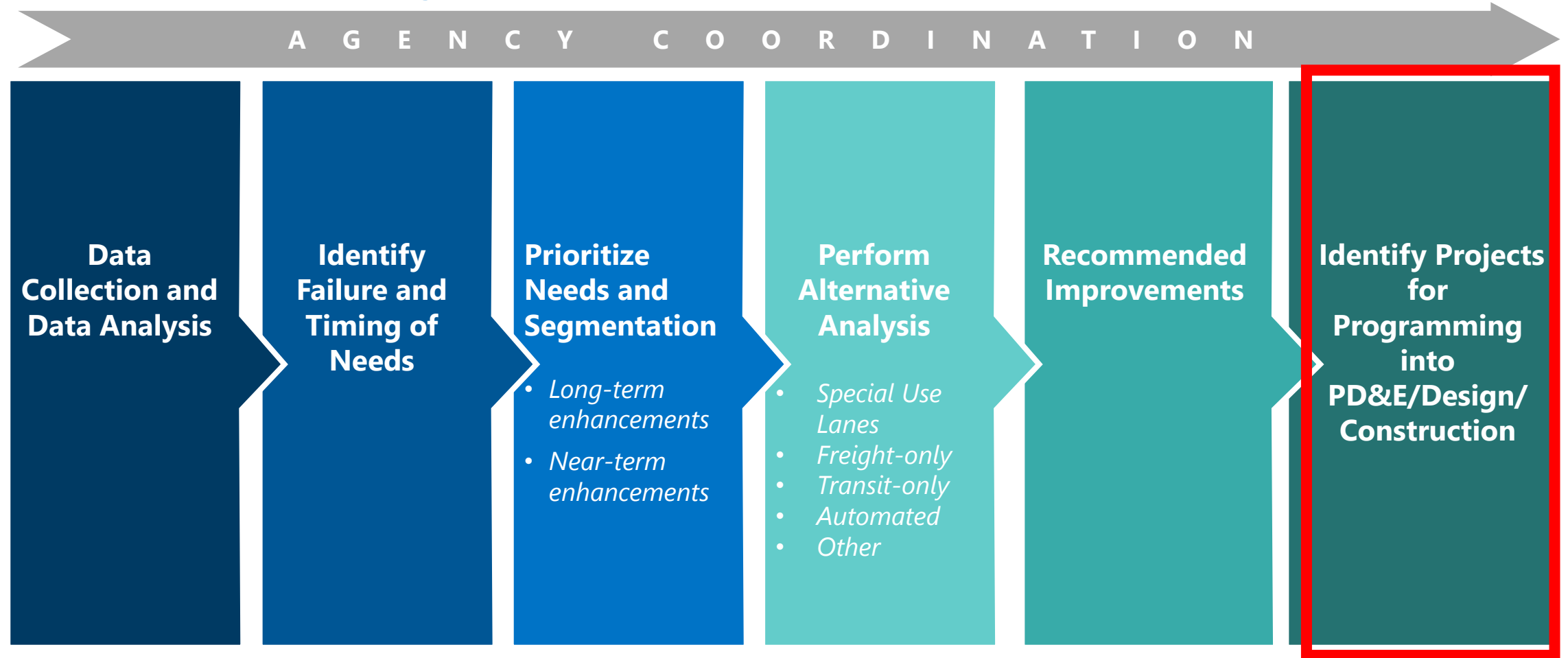
Master Plan Objectives

- » Develop Multimodal Master Plan
 - Collaborative approach
 - Regional support
- » Define and Analyze Conceptual Design Alternatives
 - Improvement needs
 - Short-term and long-term
- » Scheduling
 - Timing of improvements
 - Funding
- » Present Recommendations
 - Prioritization
 - Interstate and other roadway needs

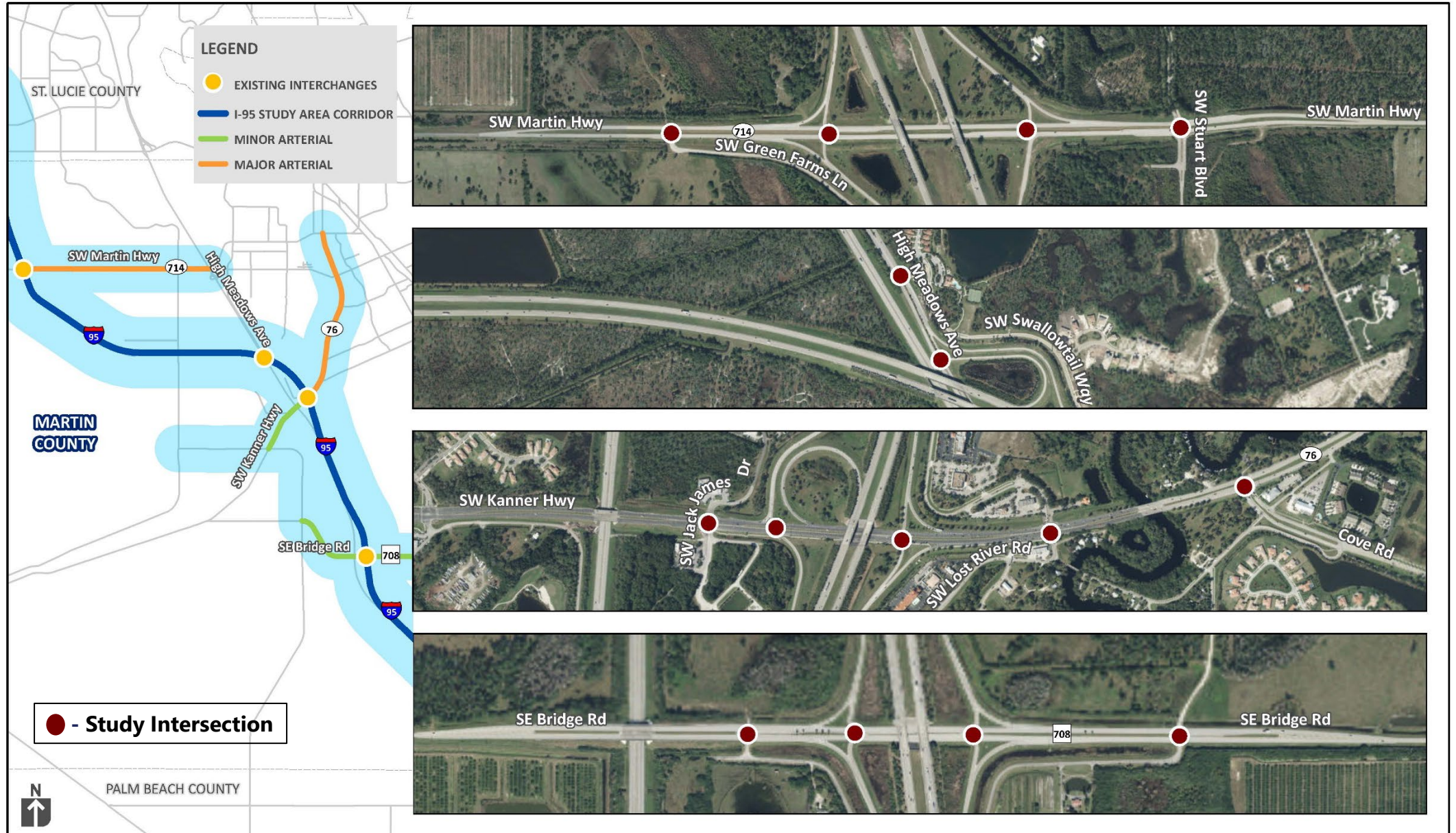


Multimodal Master Plan - Process

Mainline & Interchange Influence Areas

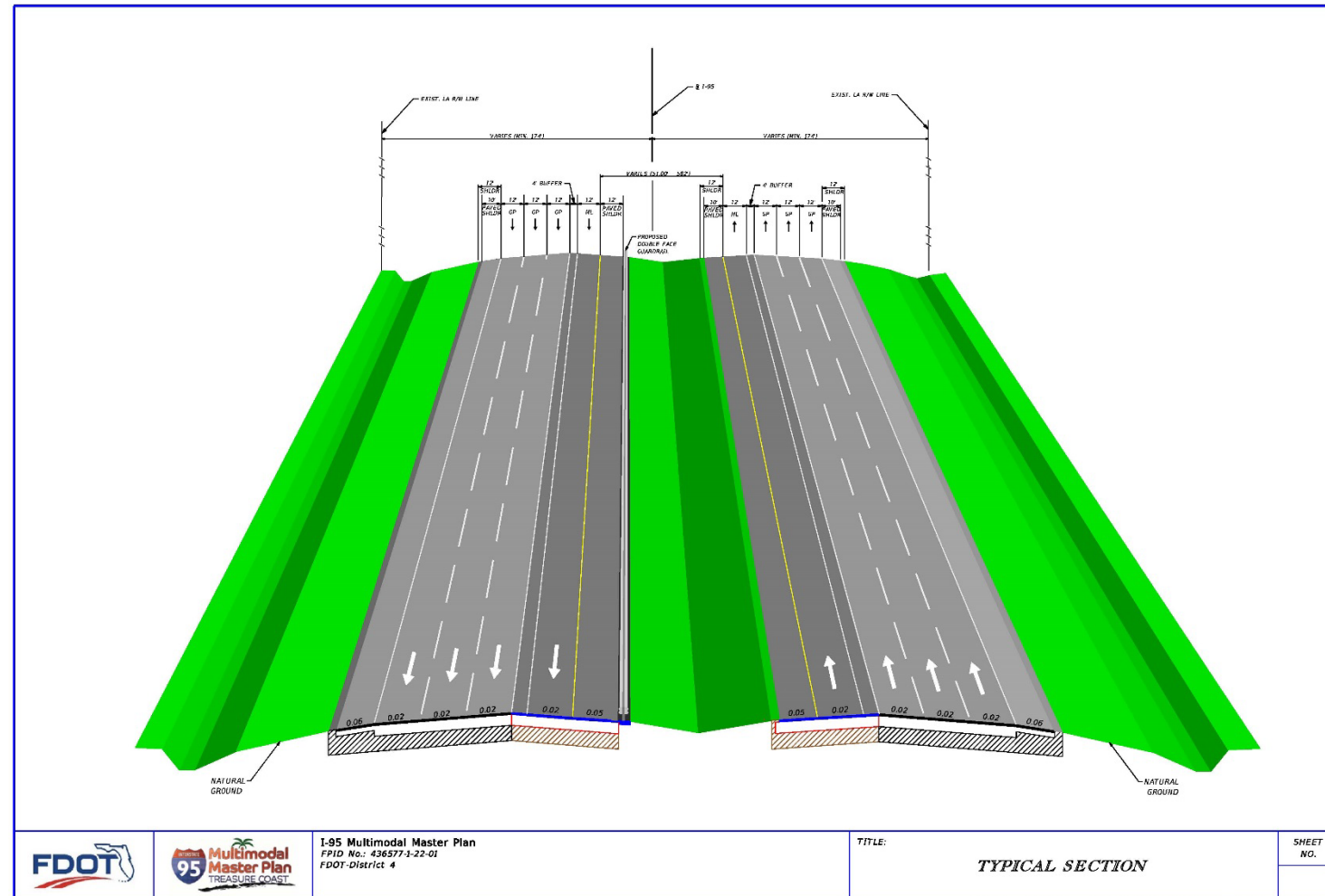


Study Area – Martin County Interchanges



I-95 Mainline Needs and Potential Impacts

- » Add Managed Lane from Palm Beach county line to SR 70
 - Add 16 feet to roadway width
 - Assuming all design standards met for lanes and shoulders
- » Widening to 8-Lanes is already noted in LRTPs
- » PD&E Phases Programmed for 2025



I-95 Mainline Needs and Potential Impacts, cont.

- » Potential ROW Impact
 - Assuming all design standards are met
- » Potential Environmental Impacts
 - Loxahatchee River (*Wild and Scenic River*)
 - Jonathan Dickinson State Park (*Section 4(f) Resource*)



I-95 north of Indiantown Road Interchange

Work Program Needs by Cost and Phase

SHORT TERM (2030) PROJECTS

FACILITY	FROM	TO	ROADWAY ID	BEGIN MILEPOST	END MILEPOST	IMPROVEMENT TYPE	COSTS ¹				
							PD&E (Phase 22)	Design (Phase 32)	ROW (Phase 4x)	Construction (Phase 5x)	CEI (Phase 6x)
I-95	Martin/Palm Beach line	Bridge Rd	89095000	0.000	7.809	- Add 2 Managed Lanes (FM #413253-2)	\$3.0 M	\$6.6 M	n/a	\$54.8 M	\$5.8 M
I-95	north of Bridge Rd	High Meadow Ave	89095000	7.810	14.010	- Add 2 Managed Lanes & bridge widening/ replacement (FM #413254-2)	\$3.0 M	\$7.0 M	n/a	\$58.1 M	\$6.1 M
I-95	north of High Meadow Ave	Martin/St Lucie line	89095000	14.011	24.835	- Add 2 Managed Lanes & bridge widening/ replacement (FM #422681-5)	\$3.0 M	\$7.6 M	n/a	\$63.2 M	\$6.6 M
SR 714/Martin Hwy	I-95 SB Off Ramp	Stuart Blvd	89090000	5.222	6.033	- Signalize both I-95 ramp termini intersections with turn lanes - Signalize Stuart Blvd	Improvement included in 2025 I-95 PD&E Study (FM #422681-5)	\$0.29 M	n/a	\$1.6 M	\$0.18 M
Bridge Rd	I-95 SB Off Ramp	I-95 NB Off Ramp				- Signalize I-95 ramp termini intersections	Improvement included in 2025 I-95 PD&E study (FM #413253.2)	\$0.49 M	n/a	\$1.4 M	\$0.19 M

1. Costs are in 2019 dollars.

* I-95 projects do not include interchange costs. I-95 Mainline PD&E studies programmed for 2025.

Work Program Needs by Cost and Phase, cont.

LONG TERM (2045) PROJECTS

FACILITY	FROM	TO	IMPROVEMENT TYPE	COSTS [1]				
				PD&E (Phase 22)	Design (Phase 32)	ROW (Phase 4x)	Construction (Phase 5x)	CEI (Phase 6x)
SR 76/Kanner Hwy	Jack James Rd	Cove Road	- Interchange Modification - At Cove Road: Add a second and third northbound left-turn lane, and restripe the shared left and right-turn lane to an exclusive right-turn lane	Combine into a 2025 I-95 PD&E study (FM #413254.2)	\$2.33 M	n/a	\$19.4 M	\$2.53 M
SR 714/Martin Hwy	west of I-95 SB Ramp Termini	east of I-95 NB Ramp Termini	At I-95 SB Ramp Intersections: Add a second WB left-turn lane and Add an EB right-turn lane. At I-95 NB Ramp Intersection: Add a second EB left-turn lane and Add a WB right-turn lane.	Improvement included in 2025 I-95 PD&E Study (FM #422681-5)	\$0.53 M	n/a	\$2.9 M	\$0.32 M
Bridge Rd	west of I-95 SB Ramp Termini	east of I-95 NB Ramp Termini	At I-95 SB Ramp Intersection: Add a second WB left-turn lane and Add a third and fourth EB through lane. At I-95 NB Ramp Intersection: Add a second EB left-turn lane and Add a third WB through lane.	Combine into a 2025 I-95 PD&E study (FM #413253.2)	\$0.5 M	n/a	\$2.6 M	\$0.29
High Meadow Avenue	Swallowtail Lane		Signalize Swallowtail Ln intersection	Improvement included in I-95 PD&E Study (FM #413254-2)	\$0.14 M	n/a	\$0.3 M	\$0.06M

1. Costs are in 2019 dollars.

Martin MPO – Next Steps

- » Endorse I-95 Treasure Coast Master Plan's Recommendations
- » Incorporate FDOT's List of SIS projects into 2045 LRTP



Project Schedule

» TAC/CAC Meetings in June 2020



» MPO Board Meeting on June 15, 2020

» Master Plan Final Report Submitted to FDOT by August 2020

Contact Information

» Christine Fasiska, P.E.

Florida Department of Transportation, District Four

3400 West Commercial Boulevard

Fort Lauderdale, Florida 33309

Phone: 954-777-4480

Email: Christine.Fasiska@dot.state.fl.us



Project Website: www.fdot.gov/projects/sefl/future/95/treasurecoast