

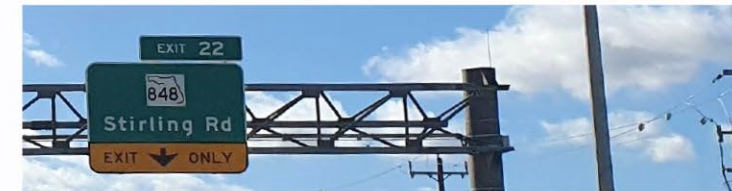
State Road 9 / I-95 Project Development and Environment (PD&E) Study

from Miami-Dade / Broward County Line to North of Griffin Rd.

FPID No. 439170-1-22-02 / ETDM No. 14500



Virtual Public Hearing



April 30, 2026
6:00 pm





Leslie Wetherell, PE
FDOT Project Manager
Florida Department of Transportation



Aniruddha "Rudy" Gotmare, PE
Consultant Project Manager
GFT Infrastructure, Inc

Virtual Public Hearing

April 30, 2026

- GoTo Webinar online platform
- No cost to the public to log-in
- 5:30 p.m.

In-Person Public Hearing

May 7, 2026

Holiday Inn

- 2905 Sheridan Street
Hollywood, FL 33020
- 5:30 p.m.

Are there any elected officials which are present tonight and would like to be recognized?

If so, please submit your name, title, and affiliation in the question box and you will be recognized later in the presentation.



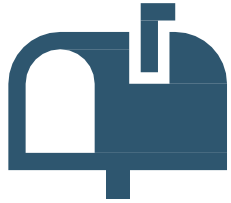
Public Hearing Components



Project Presentation



Formal Comment Period



**Property owner/tenant
notifications**



**Emails to project
contacts list**



www.fdot.gov/projects/i95southbrowardpde



Florida Administrative Register



Newspaper Advertisements



Social Media

This Public Hearing is being held in accordance with the following:

- **Section 120.525, F.S.** – Meetings, hearings, and workshops
- **Section 286.011, F.S.** – Government in the Sunshine Law
- **Section 335.199, F.S.** – Transportation projects modifying access to adjacent property
- **Section 339.155, F.S.** – Transportation planning
- **Americans with Disabilities Act of 1990 (ADA)**
- **Title VI of the Civil Rights Act of 1964** and Other Nondiscrimination Laws
- **49 CFR Part 24**, Uniform Relocation Assistance and Real Property Acquisition for Federal and Federally-Assisted Programs
- **40 CFR Part 1506**, Other Requirements of **National Environmental Policy Act (NEPA) of 1969**



The proposed project is being developed in accordance with the Civil Rights Act of 1964. Under Title VI of the Civil Rights Act, public participation is solicited without regard to race, color, national origin, age, sex, religion, disability or family status.

Persons wishing to express their concerns relative to FDOT compliance with Title VI may do so by contacting either:

Sharon SinghHagyan

District 4 Title VI Coordinator
Florida Department of Transportation
3400 West Commercial Boulevard
Fort Lauderdale, FL 33309
(954) 777-4190
Toll Free: (866) 336-8435, ext. 4190
Sharon.SinghHagyan@dot.state.fl.us

Lisa Bethancourt

State Title VI Coordinator
Florida Department of Transportation
Business Growth & Engagement Office
605 Suwannee Street, MS 65
Tallahassee, Florida 32399-0450
(850) 414-4742
Toll Free: (866) 374-3368, ext. 4742
Lisa.Bethancourt@dot.state.fl.us

The environmental review, consultation, and other actions required by applicable federal environmental laws for the project are being, or have been, carried out by the Florida Department of Transportation (FDOT) pursuant to 23 U.S.C. §327 and a Memorandum of Understanding dated May 26, 2022, and executed by the Federal Highway Administration (FHWA) and Florida Department of Transportation (FDOT).



Project Limits and Study Area

- Municipalities
 - ✓ Hallandale Beach
 - ✓ Pembroke Park
 - ✓ Hollywood
 - ✓ Dania Beach
- I-95: 65 mph
 - ✓ 8 general use lanes (four in each direction)
 - ✓ Between two to four Express Lanes
- Improvements at 3 Interchanges
 - ✓ Sheridan Street
 - ✓ Stirling Road
 - ✓ Griffin Road
- Intersection Improvements
 - ✓ Griffin Road at Old Griffin Road
- Evaluating:
 - ✓ Interchanges
 - ✓ Express Lane (entrance/exit) Improvements



I-95 PD&E Study Overall Project

● FPID 436903-1: Study Interchanges



Begin Study

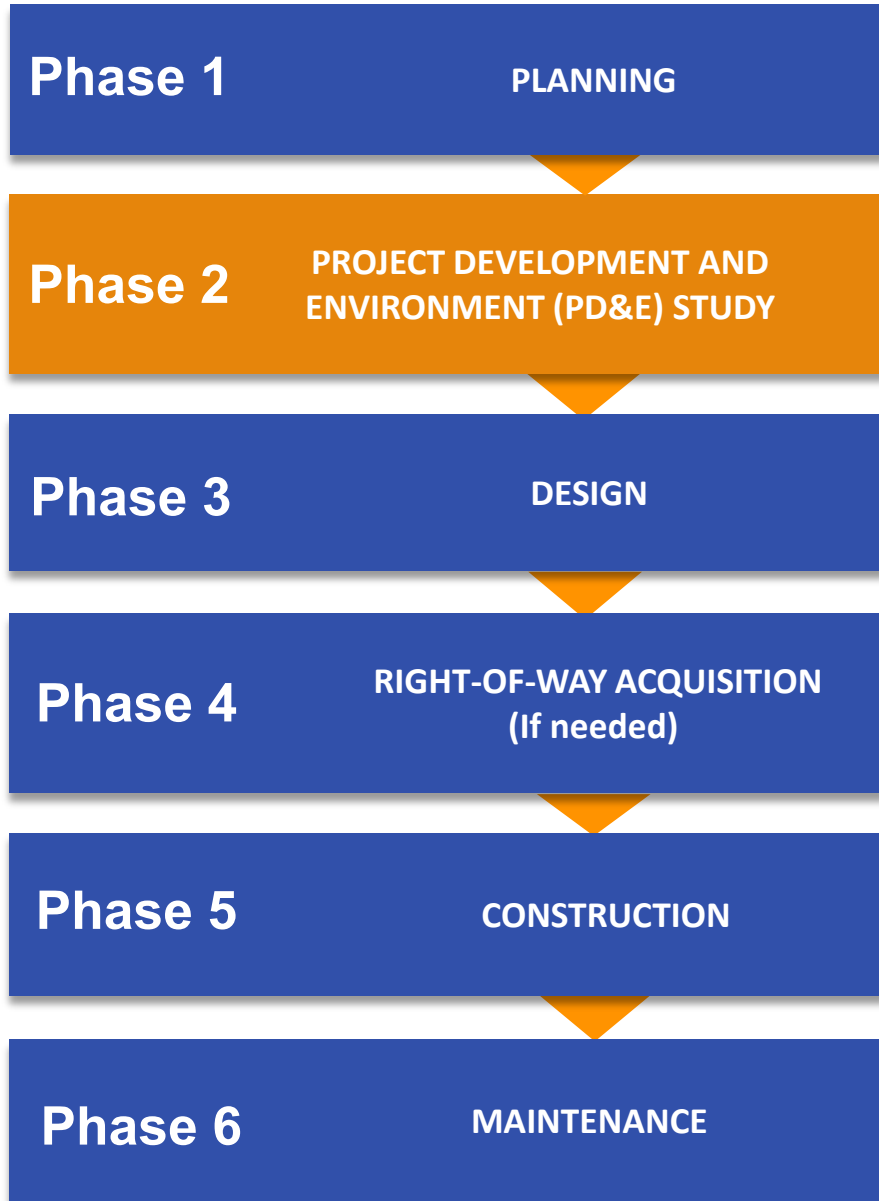
End Study

To Golden Glades Interchange

To I-595

■ FPID 439170-1: Express Lane Study Limits

● FPID 439170-1: Study Interchanges



PHASE 2: PD&E Study

- ✓ Formal FDOT process to ensure that consideration is given to environmental impacts, social impacts, public input, engineering design, and project costs.
- ✓ Required to comply with the National Environmental Policy Act.
- ✓ Involves engineering analysis and environmental evaluation, all accomplished within the context of a public participation plan.

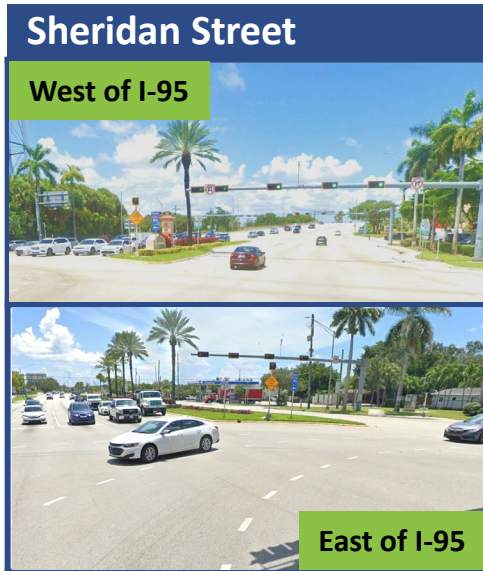
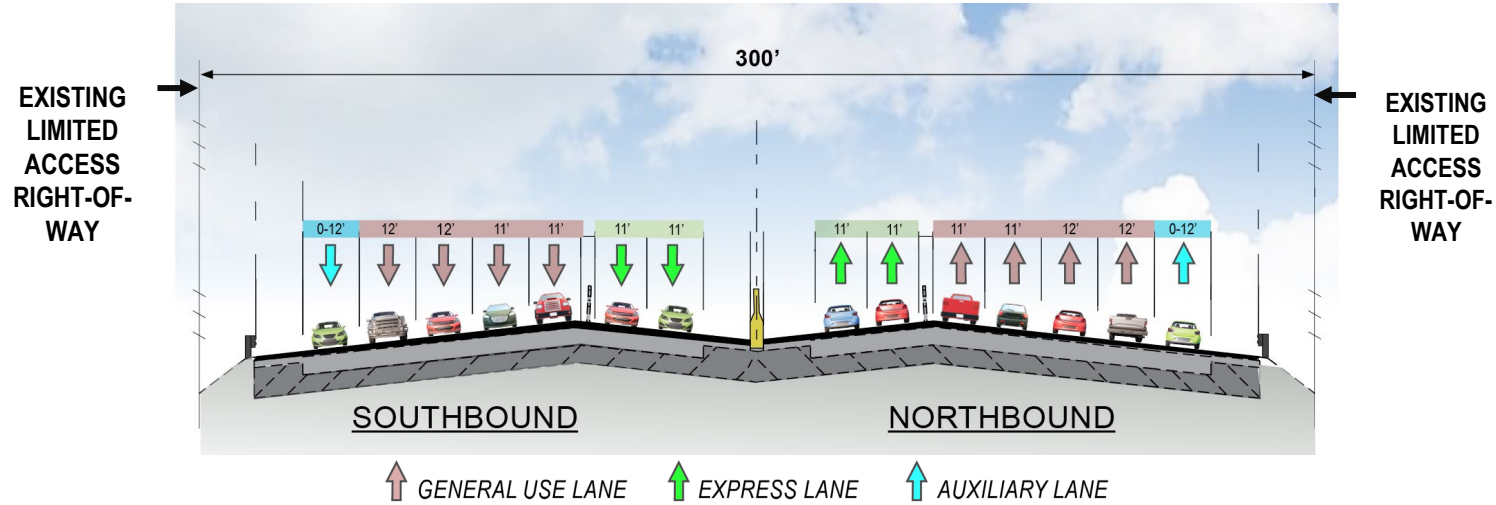
This PD&E Study is the next step from the previously conducted I-95 Master Plan (completed 2015) prior to design.

The purpose of the study is to:

- ✓ Improve mainline operations and improve traffic operations at the existing interchanges, cross streets, and managed lanes now and in the future.
- ✓ Enhance safety along S.R. 9/I-95 from Miami-Dade/Broward County Line to north of Griffin Road in Broward County, Florida.
- ✓ Address local concerns and area needs on adjacent major arterials, including Sheridan Street, Stirling Road, Griffin Road, and Old Griffin Road.
- ✓ Implement short-term and long-term solutions to enhance connectivity to major employment centers and residential areas.
- ✓ Provide opportunities to program and fund smaller projects within overall study limits through "Project Segmentation".



Existing Corridor Characteristics

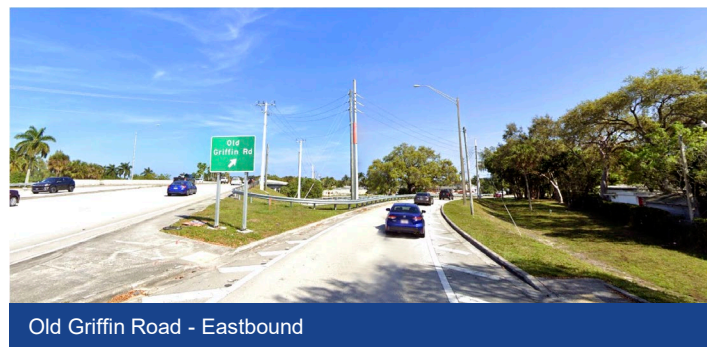
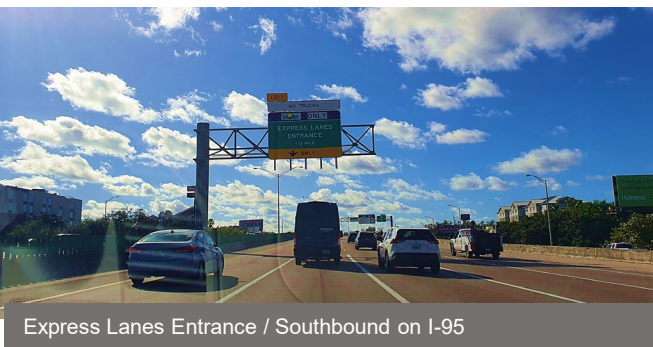
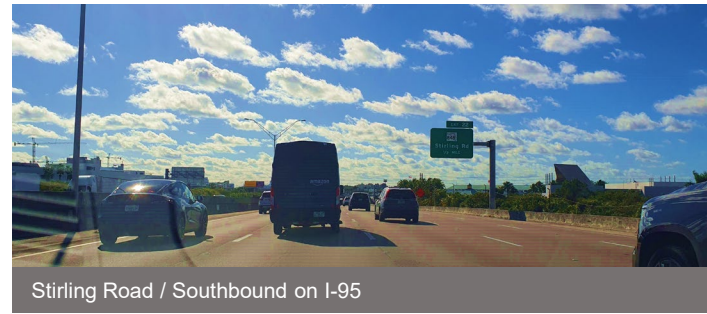


National Highway Freight Network
National Highway System

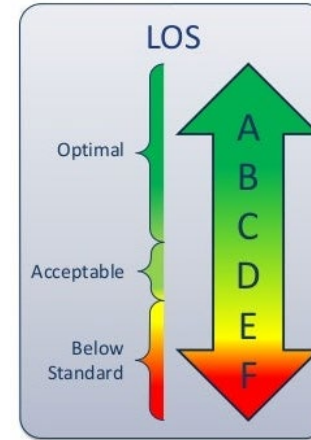


Existing Corridor Characteristics

- Proximity of at-grade railroad crossings along the South Florida Rail Corridor (SFRC) which serves Tri-Rail, Amtrak, and freight – train frequency and gate closures
- Fort Lauderdale-Hollywood International Airport glidepath
- Transit access to and from Sheridan Street Tri-Rail Station
- Old Griffin Road/Griffin Road
- Drainage, existing bridges, utilities



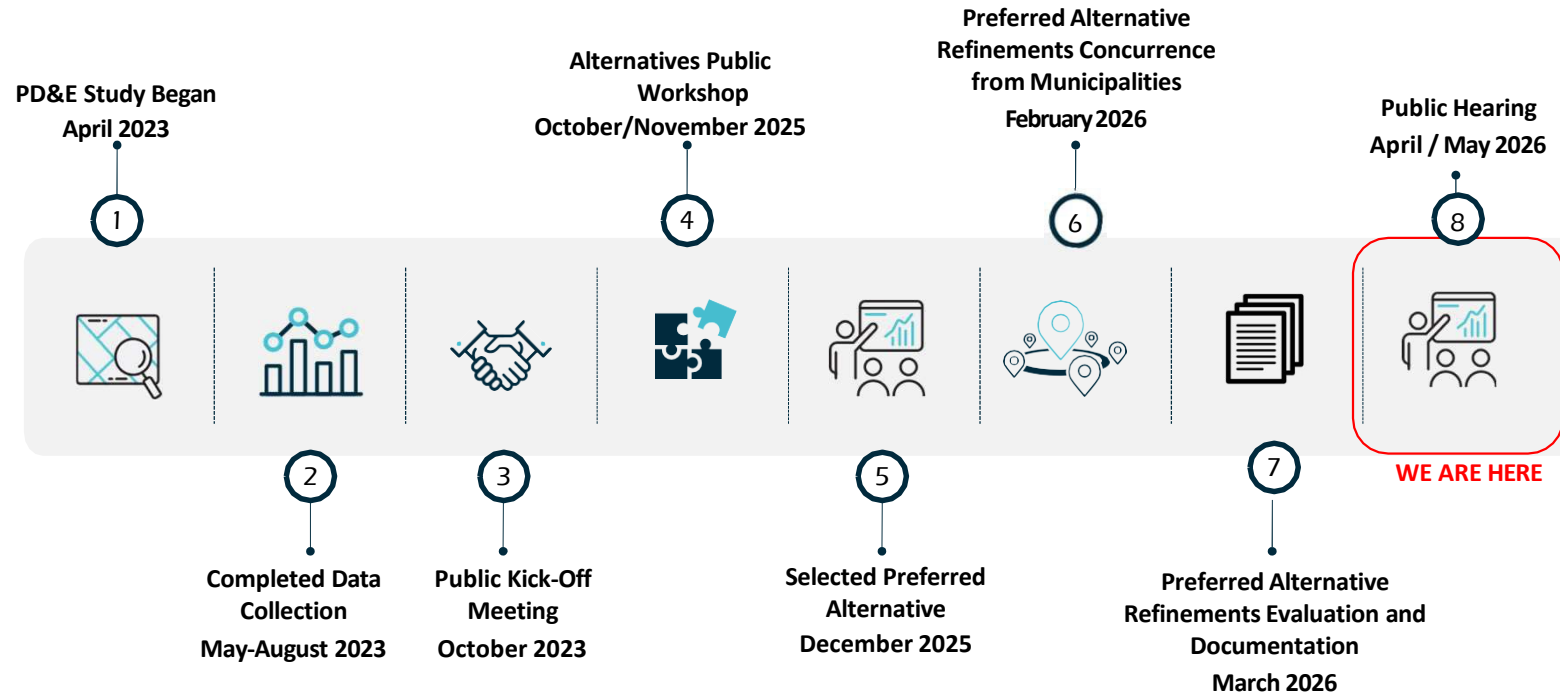
- 2024 Annual Average Daily Traffic (AADT) between 269,000 and 291,000 vehicles
- Traffic demand is projected to increase at an annual rate of 0.5%.
- Projected 2050 AADT estimated between 303,000 and 333,000 vehicles.
- Level of Service (LOS) is failing at Griffin Road, Stirling Road, and Sheridan Street Intersections.



I-95 Segment	2050 No Build			
	Lanes	AADT	Volume/ Capacity	Year of Failure
Griffin Road to I-595	12	303,000	1.18	2020
Stirling Road to Griffin Road	12	332,000	1.29	2020
Sheridan Street to Stirling Road	12	333,000	1.30	2020



PD&E Study – Project History and Community Involvement

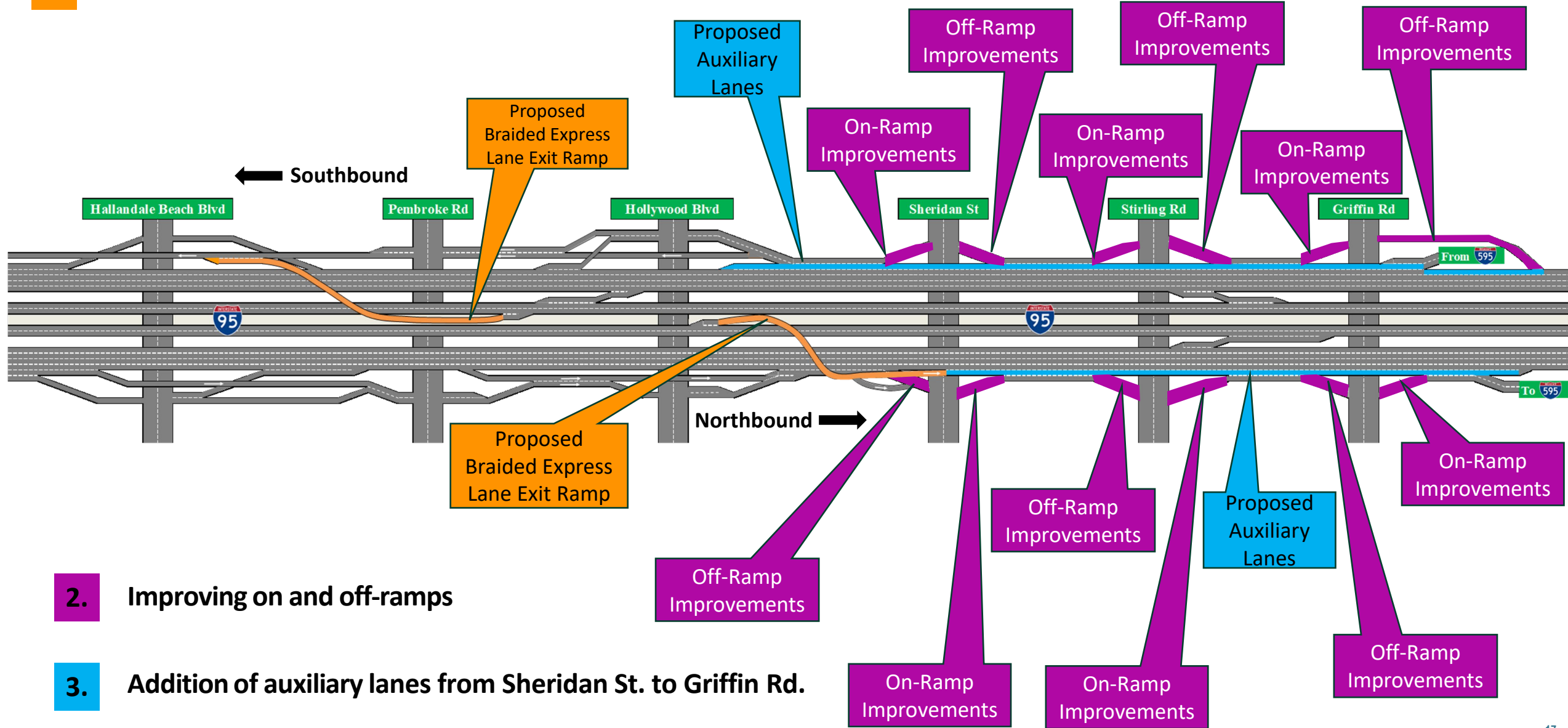


Coordinated with and received feedback from the municipalities about the proposed improvements.



Mainline Improvements

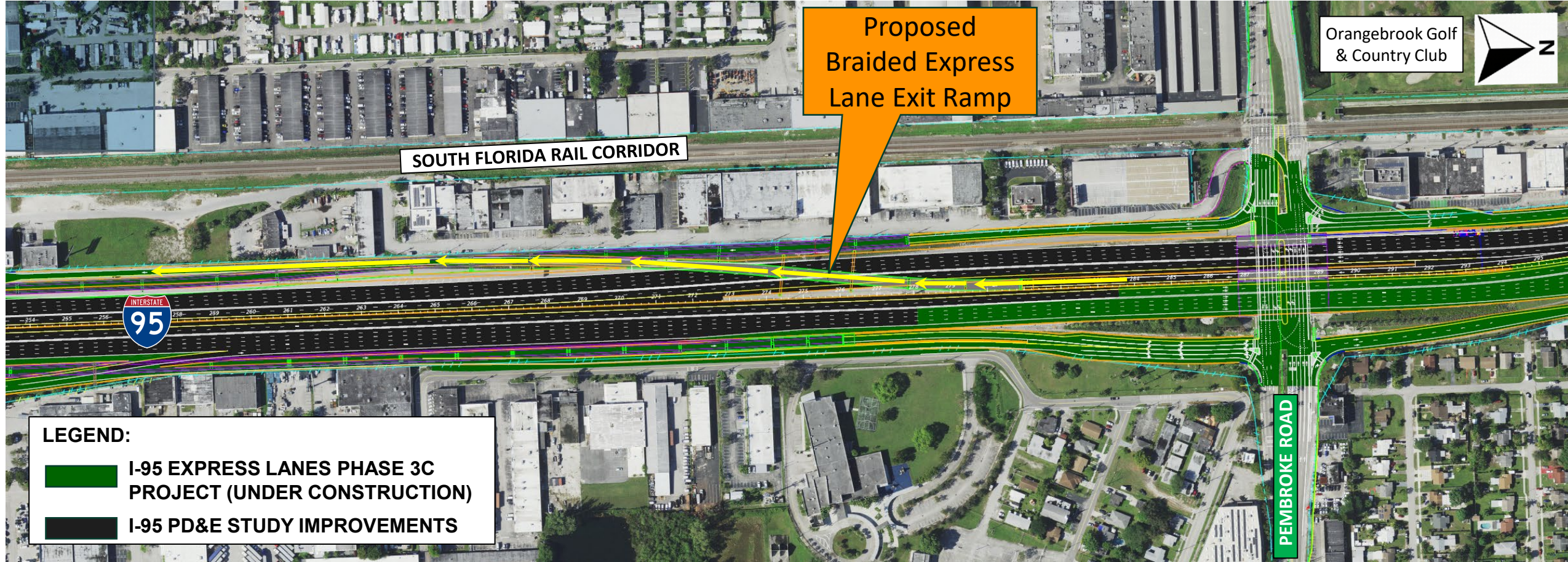
1. Replace existing express lanes egress slip ramps with elevated braided ramps. Access to interchanges remain unchanged.



2. Improving on and off-ramps

3. Addition of auxiliary lanes from Sheridan St. to Griffin Rd.

Braided Ramps



Phase 3C anticipated completion:
Early 2026






SOUTH FLORIDA RAIL CORRIDOR



Proposed Braided Express Lane Exit Ramp

LEGEND:

-  DRAINAGE WITHIN FDOT R/W
-  I-95 EXPRESS LANES PHASE 3C PROJECT (UNDER CONSTRUCTION)
-  I-95 PD&E STUDY IMPROVEMENTS

Phase 3C anticipated completion:
Early 2026

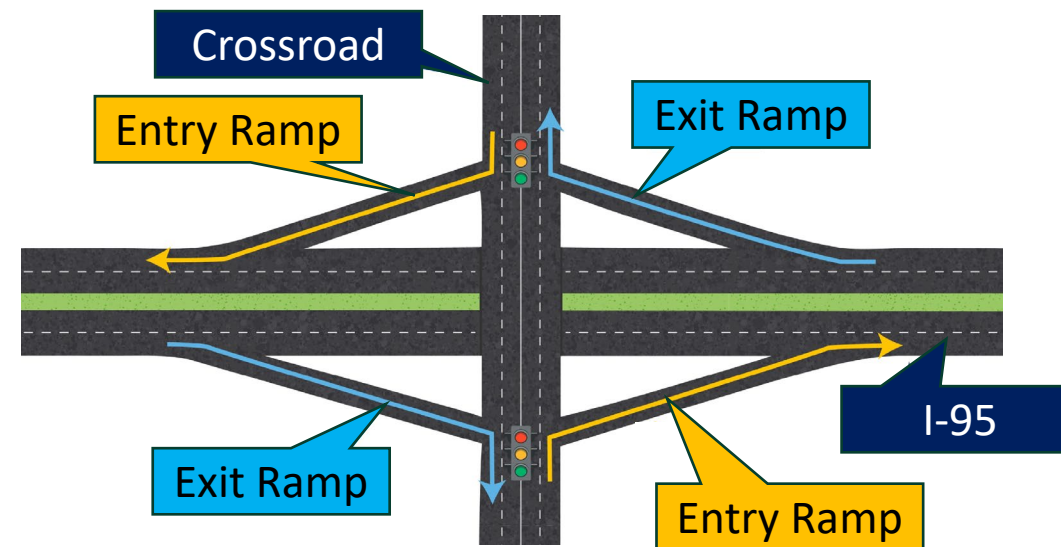
Interchanges:

- **I-95 at Sheridan Street Interchange**
 - ✓ Diamond Interchange Improvements (Modify Existing)
- **I-95 at Stirling Road Interchange**
 - ✓ Diverging Diamond Interchange (DDI)
- **I-95 at Griffin Road Interchange**
 - ✓ Diamond Interchange Improvements (Modify Existing)

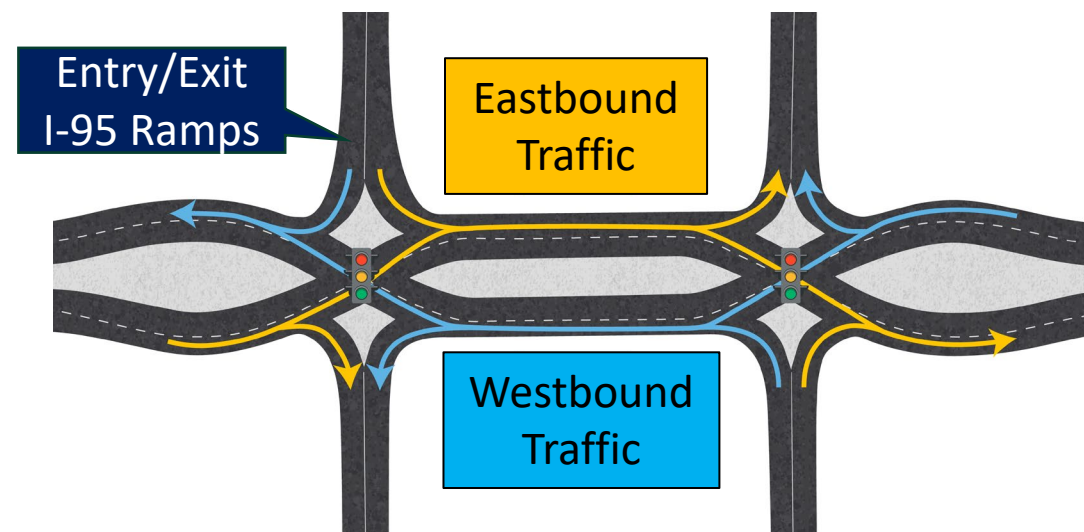
Intersection:

- **Griffin Road/Old Griffin Road Intersection**
 - ✓ Signal-Controlled

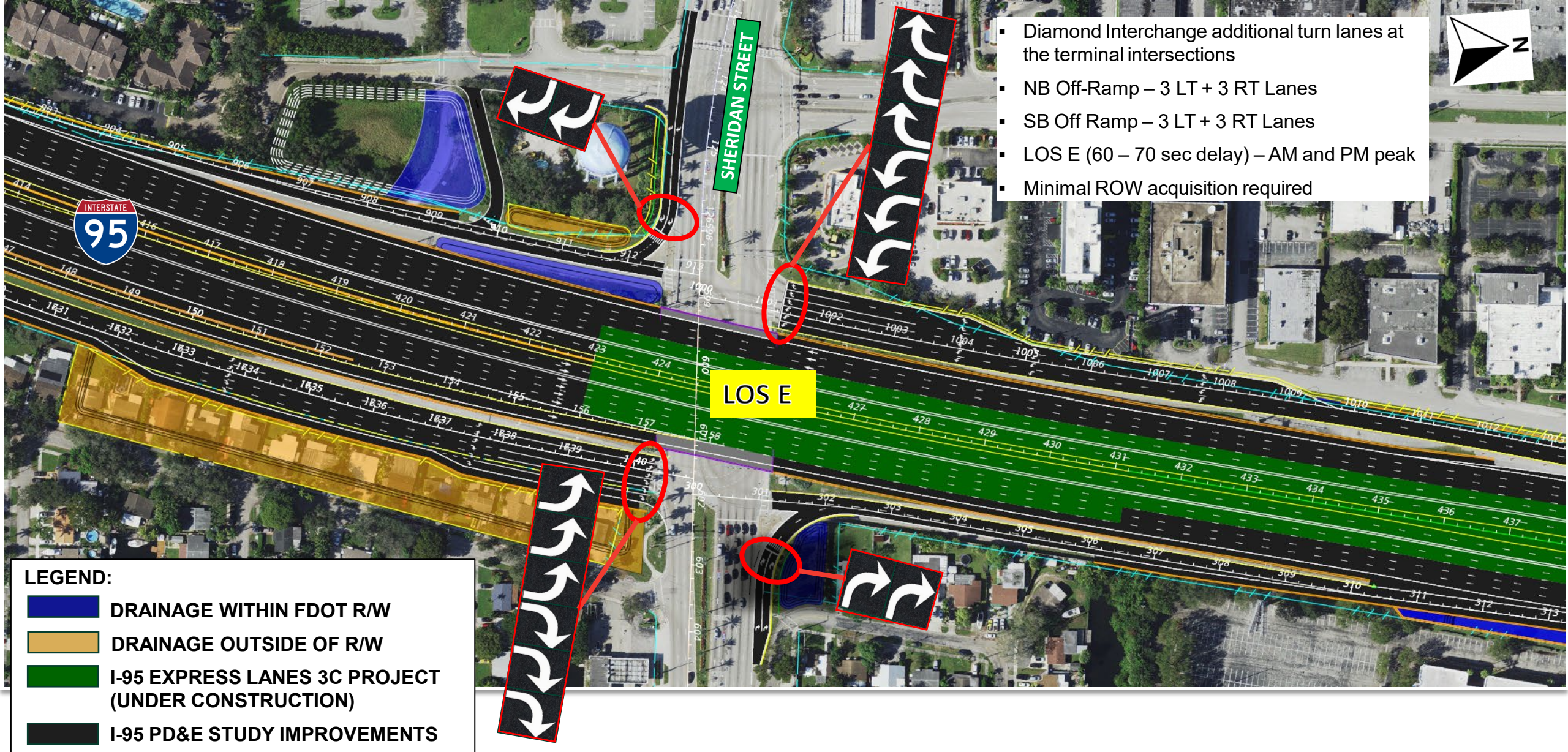
Diamond Interchange



Diverging Diamond Interchange



Sheridan Street – Diamond Interchange Improvements (Modify Existing)



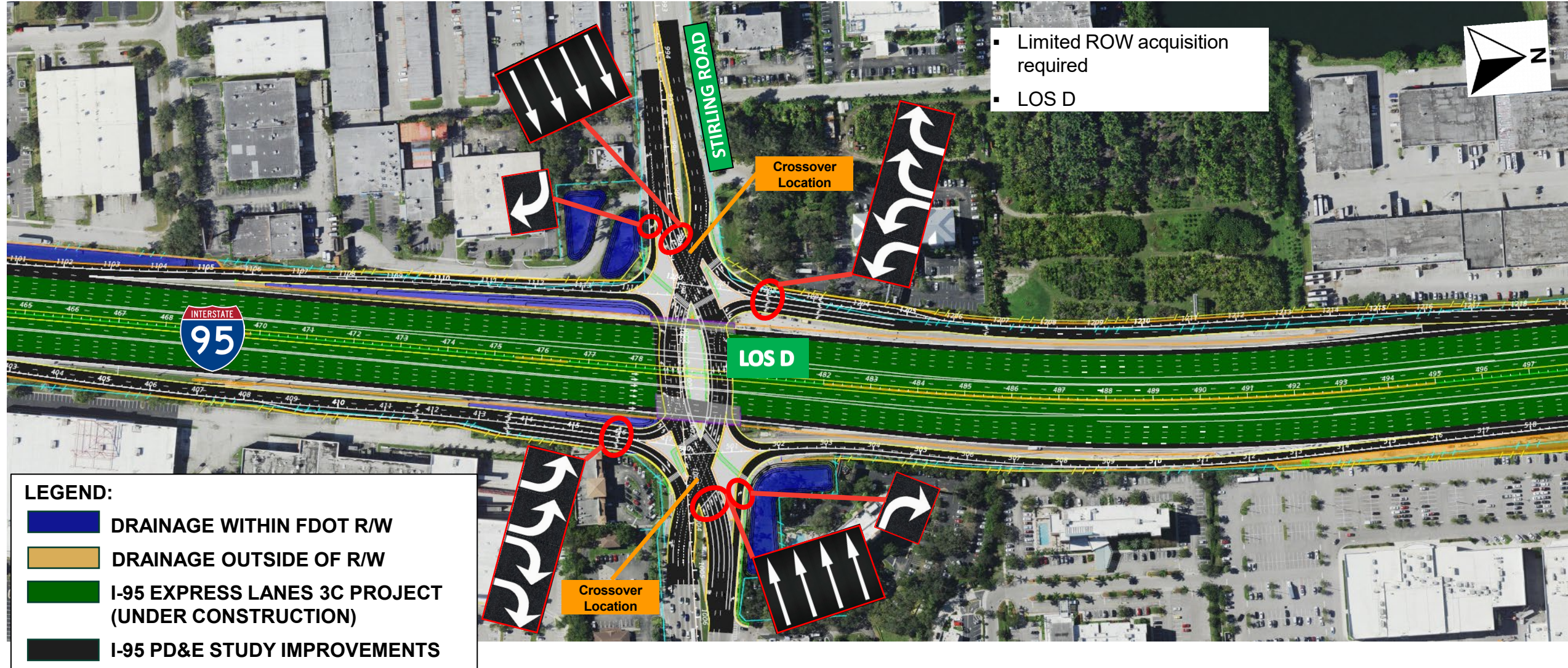
- Diamond Interchange additional turn lanes at the terminal intersections
- NB Off-Ramp – 3 LT + 3 RT Lanes
- SB Off Ramp – 3 LT + 3 RT Lanes
- LOS E (60 – 70 sec delay) – AM and PM peak
- Minimal ROW acquisition required

LEGEND:

- DRAINAGE WITHIN FDOT R/W
- DRAINAGE OUTSIDE OF R/W
- I-95 EXPRESS LANES 3C PROJECT (UNDER CONSTRUCTION)
- I-95 PD&E STUDY IMPROVEMENTS

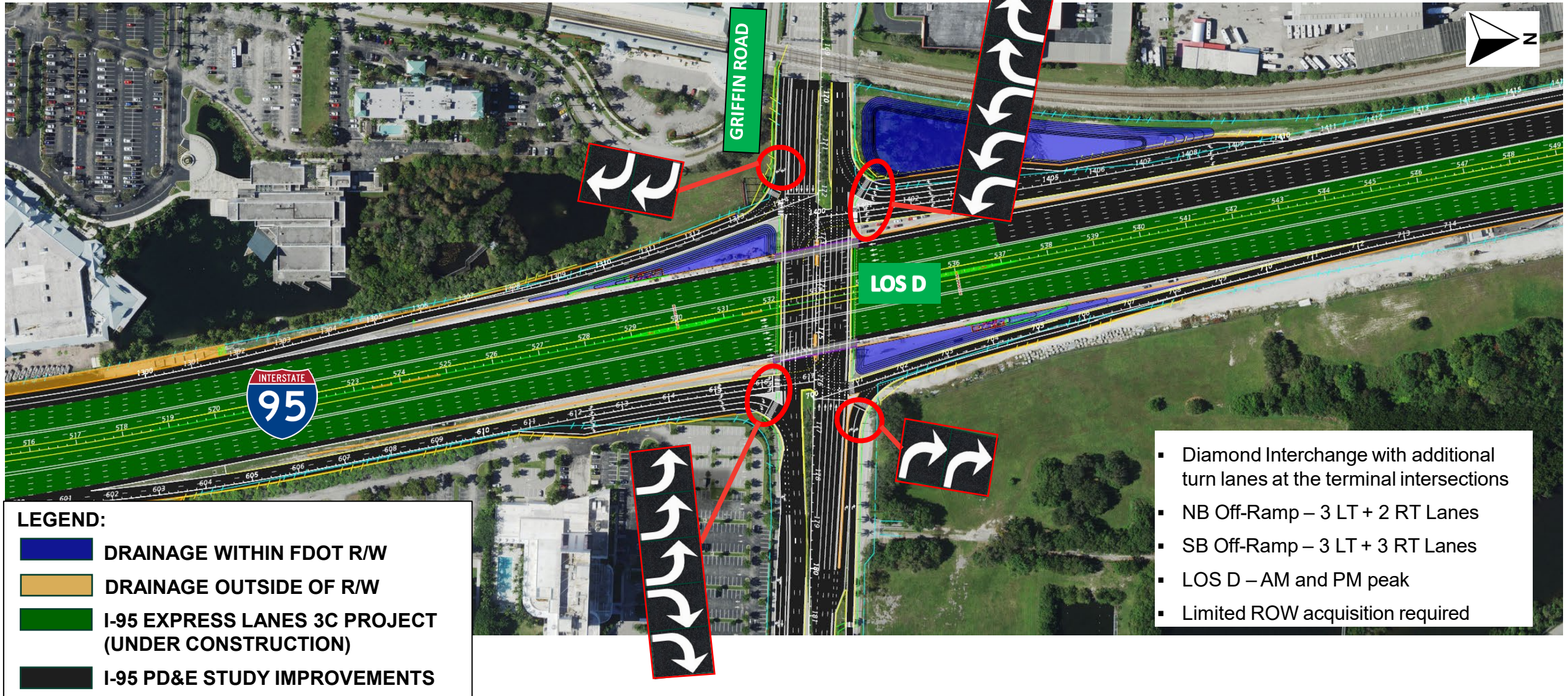
Phase 3C anticipated completion:
Early 2026

Stirling Road - Diverging Diamond Interchange (DDI)



Phase 3C anticipated completion:
Early 2026

Griffin Road - Diamond Interchange Improvements (Modify Existing)



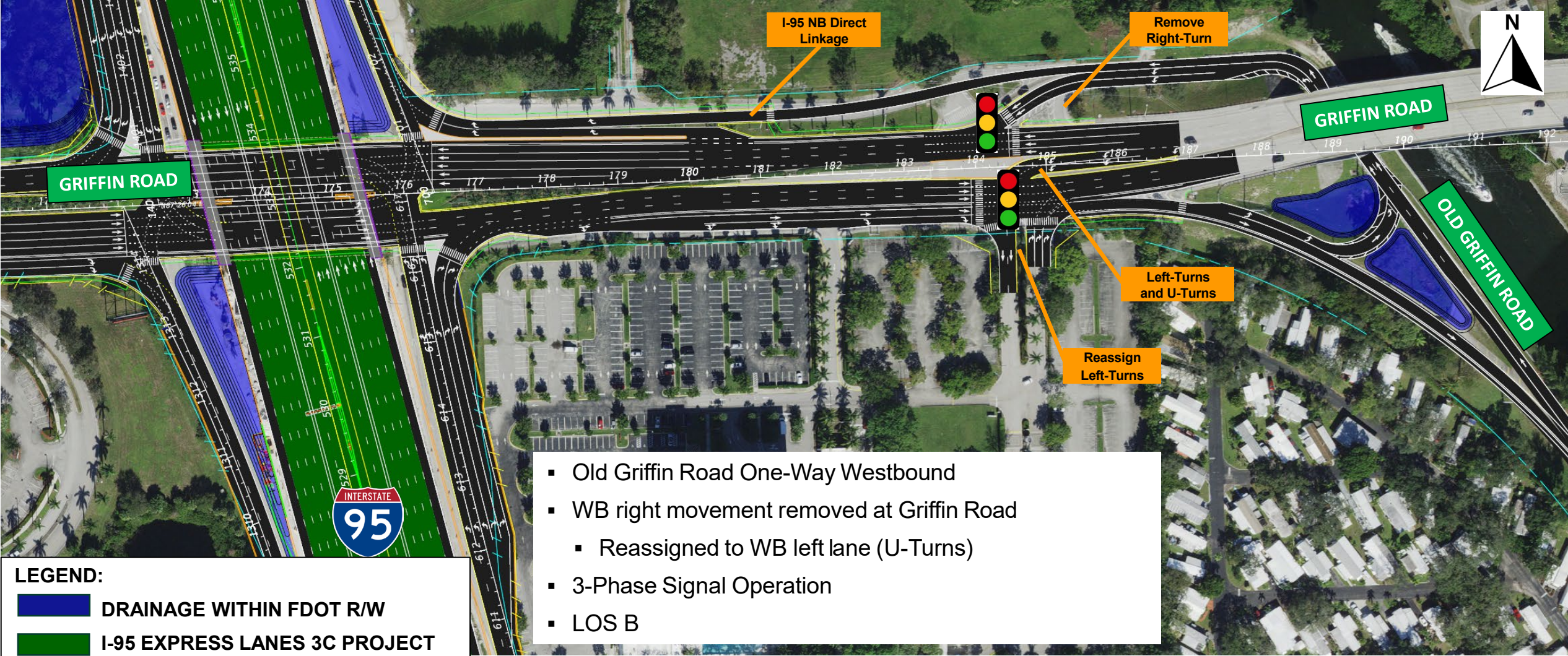
LEGEND:

- DRAINAGE WITHIN FDOT R/W
- DRAINAGE OUTSIDE OF R/W
- I-95 EXPRESS LANES 3C PROJECT (UNDER CONSTRUCTION)
- I-95 PD&E STUDY IMPROVEMENTS

- Diamond Interchange with additional turn lanes at the terminal intersections
- NB Off-Ramp – 3 LT + 2 RT Lanes
- SB Off-Ramp – 3 LT + 3 RT Lanes
- LOS D – AM and PM peak
- Limited ROW acquisition required

Phase 3C anticipated completion:
Early 2026

Griffin Road at Old Griffin Road Intersection



- Old Griffin Road One-Way Westbound
- WB right movement removed at Griffin Road
 - Reassigned to WB left lane (U-Turns)
- 3-Phase Signal Operation
- LOS B

LEGEND:

- DRAINAGE WITHIN FDOT R/W
- I-95 EXPRESS LANES 3C PROJECT (UNDER CONSTRUCTION)
- I-95 PD&E STUDY IMPROVEMENTS

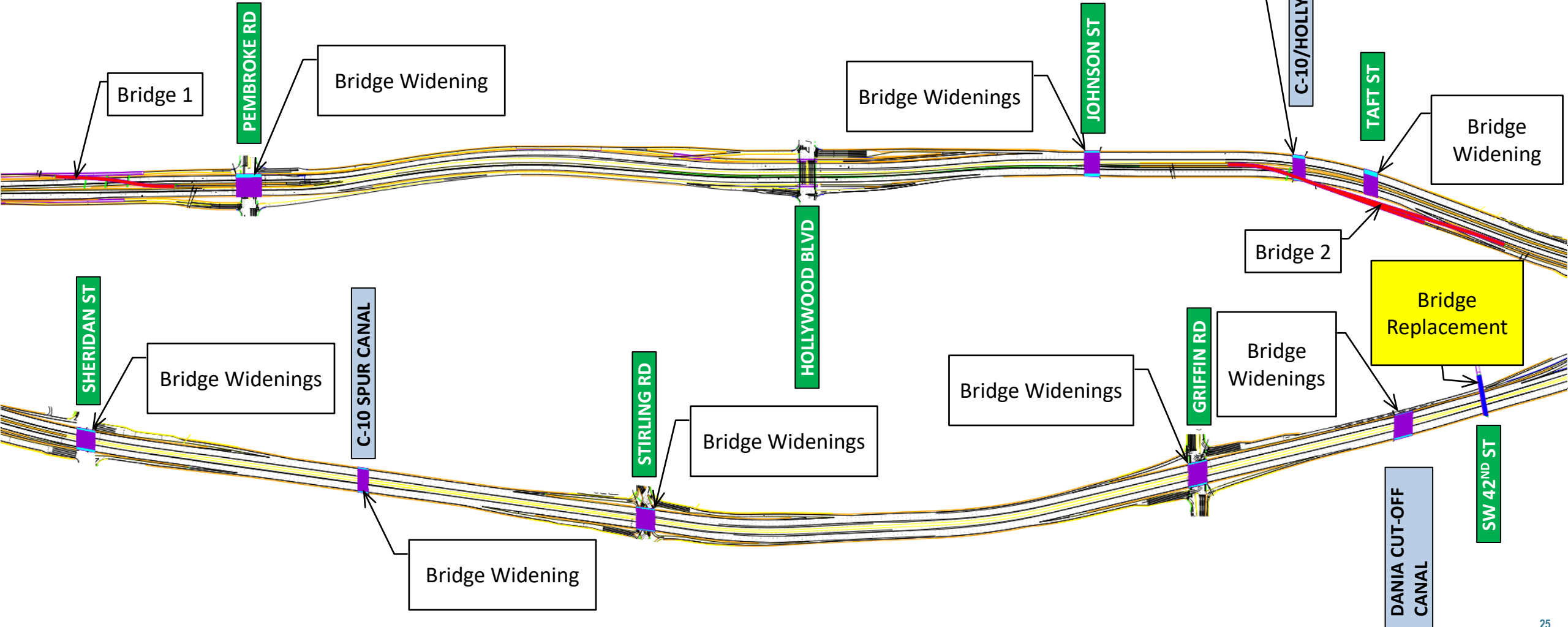
Phase 3C anticipated completion:
Early 2026

Preferred Alternative - Bridges



SUMMARY OF STRUCTURES

SYMBOLOLOGY	ITEM	QUANTITY
	PROPOSED NEW BRIDGE (CONCRETE)	1
	PROPOSED NEW BRIDGE (STEEL)	2
	PROPOSED BRIDGE WIDENINGS	16
	EXIST. BRIDGE (TO REMAIN)	9



Preferred Alternative Drainage - Sheridan Street to Griffin Road



LEGEND:

- Proposed Pond/Swale (within FDOT R/W)
- Proposed Offsite Pond/Swale (New R/W)

SEE PANEL BELOW



SEE PANEL ABOVE

- Right-of-way acquisition is anticipated for this project
- The estimated right-of-way cost was generated based on the proposed conceptual design plans
- 66 impacted parcel properties
- The estimated right-of-way cost is approximately \$53 M

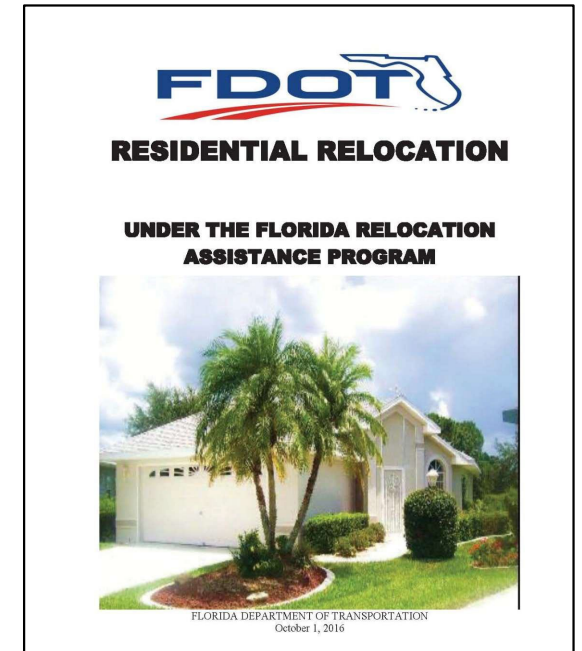
AFFECTED PROPERTIES	
Type of Parcel	Impact
Affected Properties	66
Displaced Households	14
Business Relocations	3
Potential Displaced Households	0
Personal Property Relocations	8
Potential Business Relocations	1

Note: If a substantial portion of the backyard or front yard is acquired, and/or parking is impacted, the occupants of the residence are considered potentially displaced.

- In compliance with the Uniform Relocation Assistance Act
- You will be contacted by an appraiser who will inspect your property
- You may also be eligible for relocation advisory services and payment benefits
- For more information, please contact:

Right-of-Way Contact Information:

Christina Brown
Florida Department of Transportation
3400 West Commercial Boulevard
Fort Lauderdale, FL 33309
Christina.Brown@dot.state.fl.us
954-777-4457



Florida Statute 339.09

Federal Uniform Relocation Assistance and
Real Property Acquisition Act of 1970
(Public Law 91-646 as amended
by public law 100-17)

- Project is currently unfunded for Right-of-Way acquisition

Potential effects to the social, physical, natural, and cultural environment were analyzed in accordance with state and federal regulations.

SOCIAL

- Land Use Changes
- Mobility
- Aesthetic Effects
- Relocation Potential

PHYSICAL ENVIRONMENT

- Air Quality
- Contamination
- Highway Traffic Noise
- Construction Impacts
- Utilities

NATURAL ENVIRONMENT

- Wetlands and Other Surface Waters
- Protected Species and Habitat
- Water Resources
- Floodplains

CULTURAL ENVIRONMENT

- Historical Sites/Districts
- Archaeological Resources
- Recreation Areas and Protected Lands



- Cultural Resource Assessment Surveys were conducted in 2023 and 2026
- Over 50 historic resources within the Architectural Survey Area
- One historical resource is considered National Register Eligible: Seaboard Air Line (CSX) Railroad, and one is National Register Listed: Link Trainer Naval Air Station Fort Lauderdale
- The State Historic Preservation Officer concurred with the findings of the CRAS surveys and effects in 2024 and 2026



Source: <https://www.nasflmuseum.com>

Section 4(f) Impacts

- ~ 0.10 acres of R/W required from Charles F. Vollman Park
- No removal or relocation of recreational features

WE WOULD LIKE YOUR INPUT THIS EVENING REGARDING SECTION 4(f) INVOLVEMENT



WILDLIFE AND HABITAT

- Five federally listed animal species
 1. Eastern Indigo Snake – May Affect, Not Likely to Adversely Affect
 2. Florida Bonneted Bat – May Affect, Not Likely to Adversely Affect
 3. American Crocodile – No Effect
 4. Everglade Snail Kite – No Effect
 5. West Indian Manatee – May Affect, Not Likely to Adversely Affect

- **Essential Fish Habitat (EFH) Habitat**
 - 0.03 acres of canal bottom substrate impacted



WILDLIFE AND HABITAT

Wetland and surface waters impacts

- No wetland impacts; ~ 1.28 acres of surface waters impacted

Floodplains

- No significant floodplain impacts anticipated

No aquatic preserves, Outstanding Florida Waters (OFWs), or Wild and Scenic Rivers located within the project study area

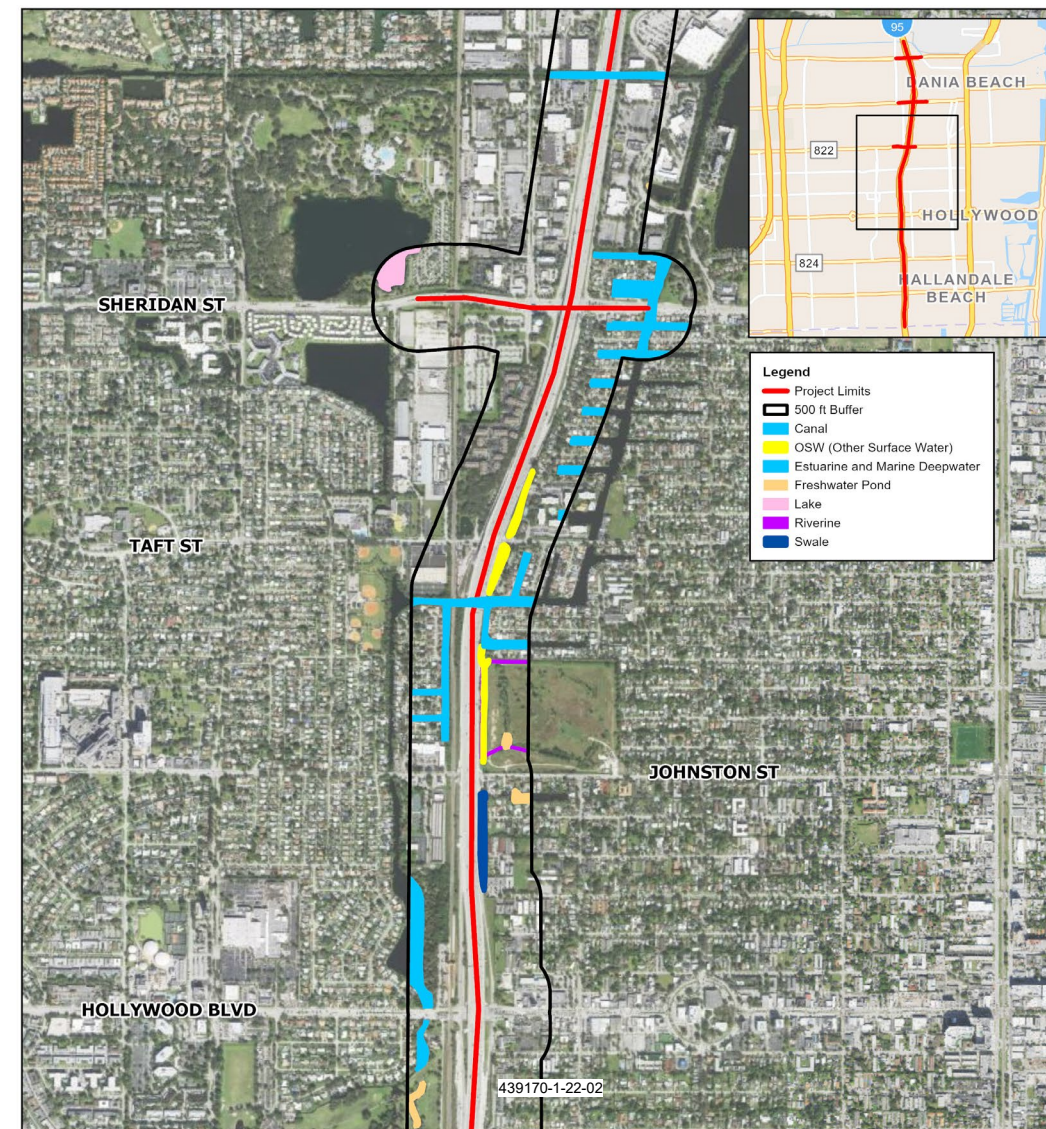


Figure 8: Field Verified Wetlands and Surface Waters

Image Source: ESRI
Image Date: 2024

I-95 (S.R. 9) PD&E Study
From the Miami-Dade County Line to North of Griffin Road
FPID No. 450334-1-22-01
Broward County



0 950 1,900
Feet

- A Noise Study was conducted for the project in accordance with FDOT and Federal Highway Administration (FHWA) policies and requirements
- Approximately 1,200 residences were identified as being noise sensitive sites
- 18 non-residential sites were identified as being noise sensitive
 - Schools, parks, places of worship, meeting halls, hotel pools, and restaurants



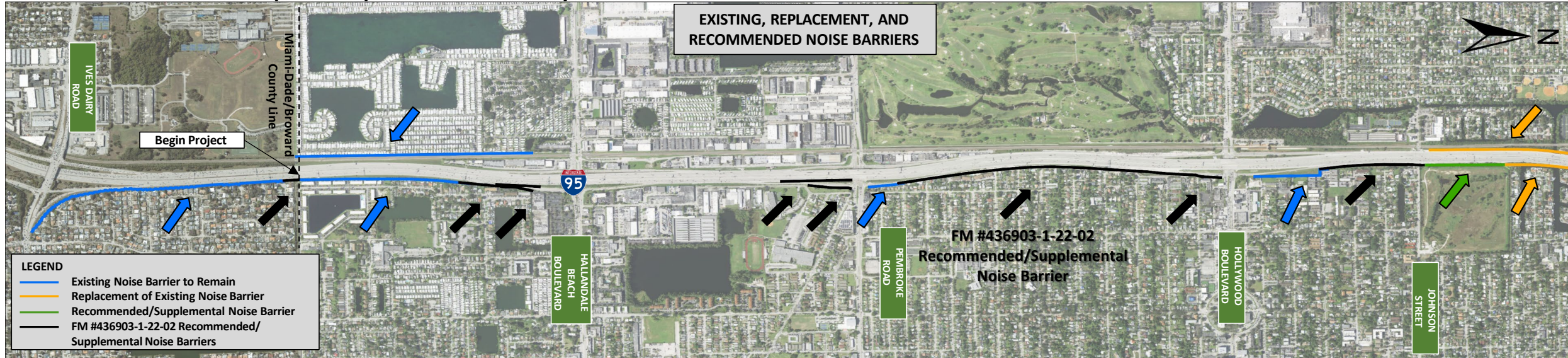
- Traffic noise impacts are predicted to occur at:
 - 496 residences
 - 10 non-residential
- Noise walls were evaluated at 15 locations
 - 8 locations were recommended for further consideration in the project's Design phase
 - 7 locations were not recommended for the following reasons:
 - Construction costs for these noise walls were determined to exceed the FDOT's reasonable cost criteria (\$64,000 per benefitted site).
 - It was not possible to reduce the noise levels by at least 7 decibels in accordance with the FDOT's noise level reduction criteria.
 - Noise barriers would block direct property access.



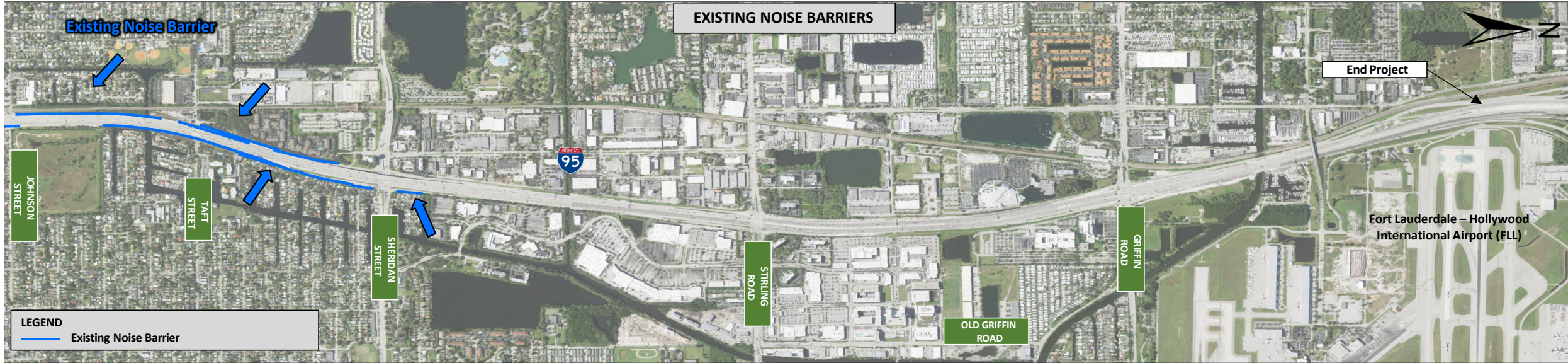
Existing Conditions – Miami-Dade/Broward County Line to North of Johnson Street



Future Conditions with Proposed Improvements – County Line to North of Johnson Street



Existing Conditions – From Johnson Street to North of Griffin Road



Future Conditions with Proposed Improvements – From Johnson Street to North of Griffin Road



AIR QUALITY

- No significant impacts to air quality
- Project area designated as “attainment”
- The project meets the maximum air quality standards established by the U.S. Environmental Protection Agency



CONTAMINATION

- 72 sites of potential environmental concern were identified within the project area
- 6 sites are rated as “high risk”
- 16 sites are rated as “medium risk”
- 41 sites are rated as “low risk”
- 9 sites are rated as “no risk”
- Level 2 Contamination Assessment recommended during the project Design phase for high and medium risks, prior to right-of-way acquisition



- Permits anticipated to be required include:
 - United States Army Corps of Engineers (USACE) - Section 404 Dredge and Fill Permit
 - South Florida Water Management District (SFWMD) Environmental Resources Permit (ERP)
 - United States Coast Guard (USCG) – Bridge Permit
 - Florida Department of Environmental Protection (FDEP) National Pollutant Discharge Elimination System (NPDES) permit



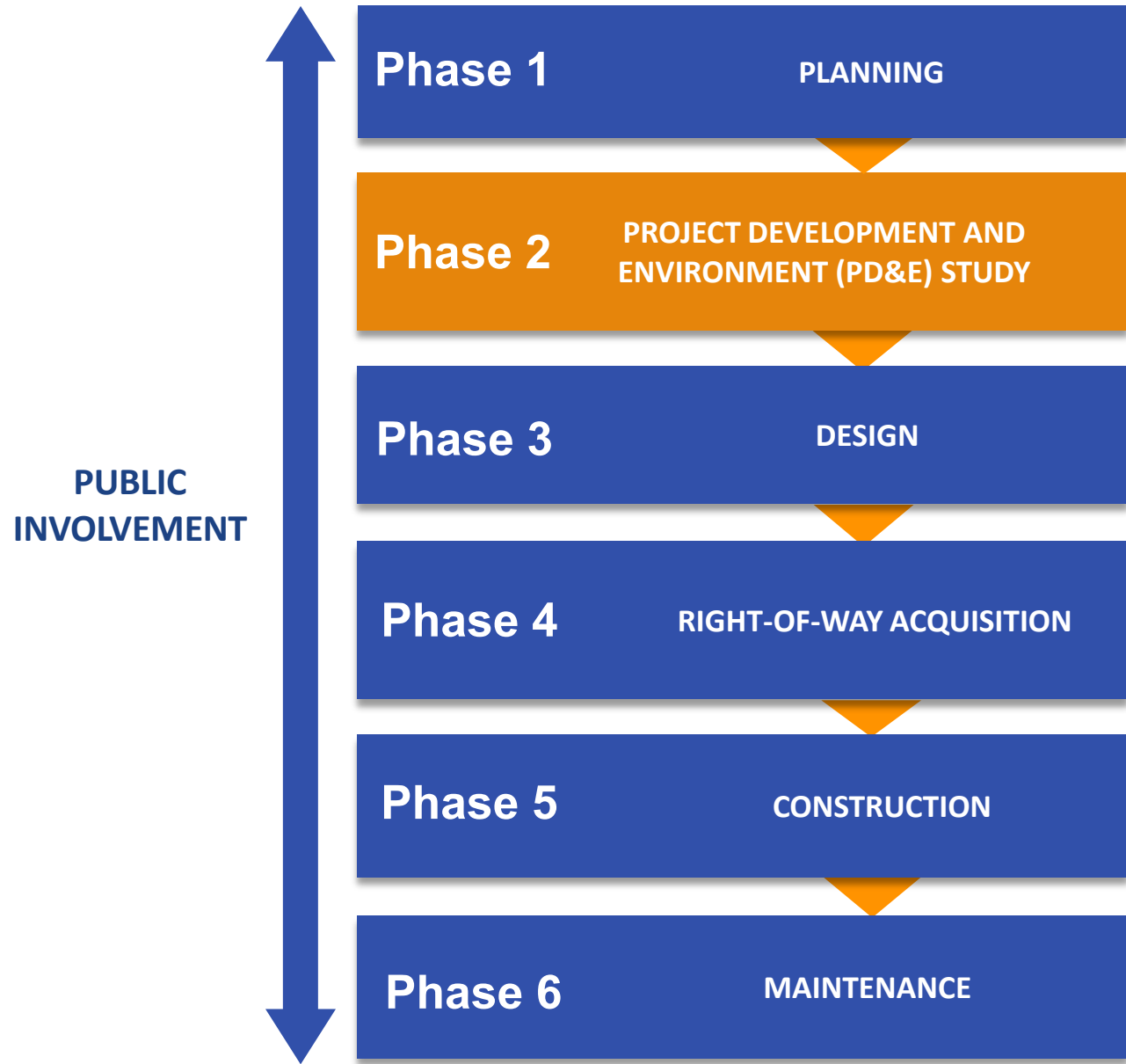
**US Army Corps
of Engineers®**



- Developed a project cost estimate
- Generated using the FDOT Long Range Estimate (LRE) cost estimating system
- Includes the major cost components typically associated with highway construction and right-of-way acquisition
- The estimated project total cost is \$537.52M

CATEGORY	COST
Construction Cost	\$389.23 million
Utilities	\$5.79 million
Design (13%)	\$50.60 million
Right-of-Way	\$53.0 million
Construction Engineering and Inspection (10%)	\$38.9 million
Total Cost Estimate	\$537.52 million

Preliminary: Subject to Change

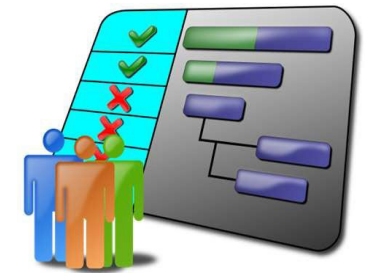


SCHEDULE

- Location Design Concept Acceptance (Study Complete) – December 2026
- Design Phase FY 2027

FUNDING

- Design – Funded
- Right of Way – Unfunded
- Construction – Unfunded



**We encourage you to
submit comments**

1. Online at Project Website
2. In-person using Comment Form
3. By email to Project Manager
4. By U.S. mail to Project Manager

Project Website:


www.fdot.gov/projects/i95southbrowardpde

Project Manager Contact Information:


Leslie Wetherell, P.E.
Florida Department of Transportation
3400 West Commercial Boulevard
Fort Lauderdale, Florida 33309
Leslie.Wetherell@dot.state.fl.us
954-777-4438

*Please provide comments or questions
by May 18, 2026 to become part of the
Public Hearing Record*






Comments received tonight or postmarked/emailed **by May 18, 2026** will become part of the public hearing record



Incorporate comments into decision making process



Approval of Final PD&E Documents

- PD&E Study Documents and Reports are available for public review at the following locations:

FDOT District Four Office
3400 West Commercial Boulevard
Fort Lauderdale, Florida 33309

Hollywood Branch Library
2600 Hollywood Boulevard
Hollywood, FL 33020

Dania Beach Paul DeMaio Library
1 Park Ave E
Dania Beach, FL 33004

Hallandale Beach Branch Library
300 S. Federal Highway
Hallandale Beach, FL 33009

Documents to remain on display until May 18th.

- PD&E Study Documents, Reports, and Display Boards are also available on the project website:

www.fdot.gov/projects/i95southbrowardpde

SR-9/I-95 PD&E Study

Welcome

The Florida Department of Transportation (FDOT) District Four is conducting a Project Development and Environment (PD&E) Study for SR-9/I-95 from Miami-Dade/Broward County Line to north of Griffin Road. The objective of this PD&E study is to evaluate interchange improvements at the interchanges of Sheridan Street, Sirling Road, and Griffin Road, in addition to mainline/collector/distributor (C/D) facilities from north of Hollywood Boulevard to north of Griffin Road and express lane access points/elevated braided ramps over the SR-9/I-95 corridor mainline from Ives Dairy Road to north of Griffin Road.

The primary purpose of the project is to improve traffic operations at the existing interchanges, cross streets, and managed lanes, address existing and future traffic demand, and enhance safety along SR 9/I-95 from Miami-Dade/Broward County Line to north of Griffin Road in Broward County, Florida.

The three southern interchanges are part of the Project Development and Environment (PD&E) Study for Interstate 95 (I-95) from south of Hallandale Beach Boulevard (SR 820) to north of Hollywood Boulevard (SR 820). Information for this study is available at www.fdot.gov/projects/i95-820/index.htm.

FDOT to host Public Hearing


The Florida Department of Transportation (FDOT) is hosting a Public Hearing regarding the State Road (S.R.) 9/I-95 PD&E Study from Miami-Dade/Broward County Line To North of S.R. 818/ Griffin Road (Financial Project Identification Number: 439170-1-22-02).

The Public Hearing is scheduled for **Thursday, April 30, 2026 (Virtual)**, and **Thursday, May 7, 2026 (In-Person)**.

- **Virtual:** Persons who do not wish to attend the Public Hearing in person can join the hearing **virtually at 5:30 p.m. on Thursday, April 30, 2026**. To register for the Public Hearing, please use the following link: <https://connect.fdot.gov/external/17188300470825399>. You will receive an email with a link to log in the day of the Virtual hearing. If using a mobile device, the "GoToWebinar" application is required to attend. Please allow adequate log-in time to view the presentation in its entirety. To join by phone during the Virtual meeting, please dial: 1 (914) 614-3221, Access Code: 883-199-273.
- **In-Person:** The Public Hearing will be held at **Holiday Inn** located at **2905 Sheridan Street, Hollywood, Florida 33020** on **Thursday, May 7, 2026**. The Public Hearing will begin at **5:30 p.m.** in an open house format, a formal presentation will begin at **6:00 p.m.**, followed by a public comment period.

The same information will be presented at both the Virtual and In-Person Public Hearing, so attending both is not necessary.

Study At-A-Glance



District
Four (Southeast Florida)

PD&E Study Start Date
April 6, 2023

PD&E Study Estimated Completion Date
December 2026

Estimated Construction Cost
\$389.2 Million

Lengths and Limits
Approximately 6.6 miles; From Miami-Dade/Broward County Line to north of Griffin Road

Consultant
GFT Infrastructure, Inc.

Project Manager
[Leslie Wernick, PE](#)
(954) 777-4438

CLICK ON IMAGE TO VIEW MAP DETAIL

If you would like to leave a comment or ask a question about the project, please [click here](#) to

District Office
Steven C. Braun, District 4 Secretary

3400 W Commercial Blvd.
Fort Lauderdale, FL 33309

Tel: 954-486-1400
Fax: 954-777-4197
[E-Mail Us](#)

Additional Contacts
[Staff Directory](#)

Study Resources
[About the Study](#)
[Documents & Publications](#)
[Email Updates](#)
[Photos](#)
[Public Notices](#)
[Schedule](#)
[Travel Updates](#)

USEFUL LINKS

- [Florida Initiatives](#)
- [Web Notices & Notices](#)
- [FDOT Americans with Disabilities/Accessibility \(ADA\)](#)
- [Statement of Agency](#)
- [Performance](#)
- [M4Florida.com](#)
- [Contact Us](#)
- [FOI](#)

CONTACT US

FDOT
600 Suwannee St.
Tallahassee, FL 32399
Phone: (904) 611-4110
Customer Service Portal

OUR NEWSROOM

Providing timely responses to inquiries from the press, government officials, and the public is a crucial function of the Florida Department of Transportation. You can find recent press releases, public notices, media contacts, links to our social media pages and government.

45

Youth Traffic Safety Month

The “**100 Deadliest Days**” for teen drivers
are between Memorial Day and Labor Day

Scan to download the
FREE Safe Driving Guide
for Teens and Parents!



EVERYONE
HAS **SOMETHING**
TO GET HOME TO

Let's Get Everyone Home



TargetZeroFL.com



S.R. 9 / I-95 PD&E STUDY

from Miami-Dade / Broward County Line to North of Griffin Rd.

FPID No. 439170-1-22-02 / ETDM No. 14500



Virtual Public Hearing



**The formal comment period
will now begin.**

April 30, 2026



Public Comment Period



Written

- Type in the **Question box** on the Control Panel. Include your **name** and **address**.
- **Comment Form**
- **Project Website:** www.fdot.gov/projects/i95southbrowardpde
- **Email:** leslie.wetherell@dot.state.fl.us
- **Mail:** Leslie Wetherell, PE
Florida Department of Transportation, District Four
3400 W. Commercial Boulevard, Ft. Lauderdale, FL 33309
- **Submit written comments by May 18, 2026 to be included in the Public Hearing Record**

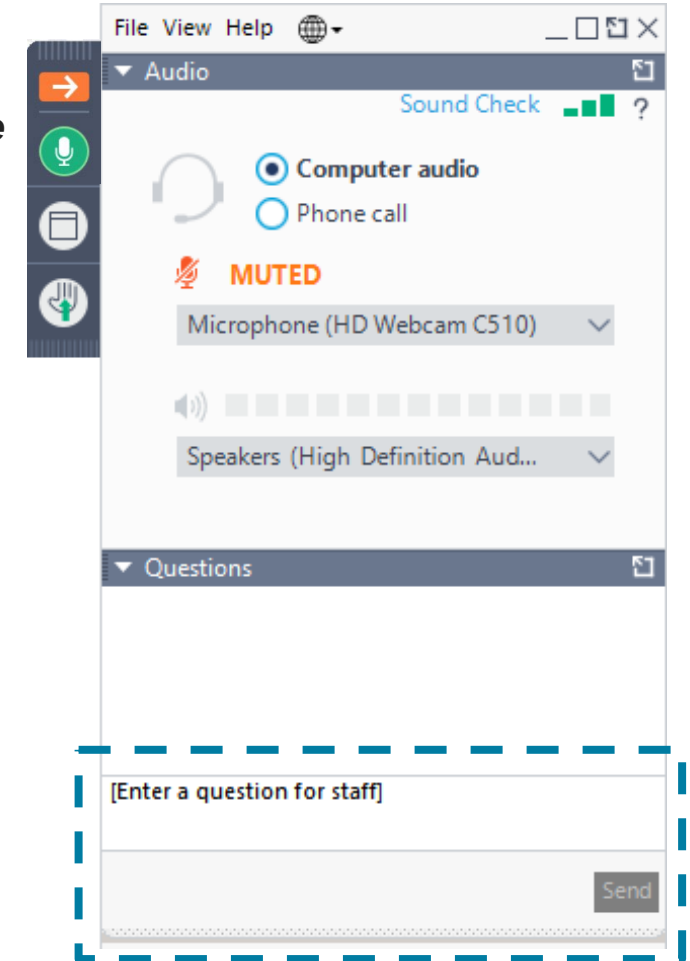


Oral

- Click the **Raise Hand** button on your Smart Phone or tablet
- State your **name** and **address**

*Unmute
(green)*

*Raise
Hand*



Oral Comment Period

1. Moderator will call on Registered Speakers first
2. State your name and address
3. Limit comments and/or questions to 3 minutes



Public Hearing

S.R. 9 / I-95 PD&E Study

From Miami-Dade/Broward County Line
to north of Griffin Road

**Project Development and Environment
(PD&E) Study**

FDOT Project Manager

Leslie Wetherell, P.E.

FDOT, District 4

(954) 777-4438 or

(866) 336-8435, extension 4438

leslie.wetherell@dot.state.fl.us

www.fdot.gov/projects/i95southbrowardpde