

ORLANDO SANFORD INTERNATIONAL

SFB



Airport: Orlando Sanford International Airport (SFB)

City: Sanford, Florida

County: Seminole

Sponsor: Sanford Airport Authority

Role: Primary Commercial Service (Small Hub)

CFASPP Region: East Central (cfaspp.com)

FDOT District: 5

Website: [Orlando Sanford](http://OrlandoSanford)

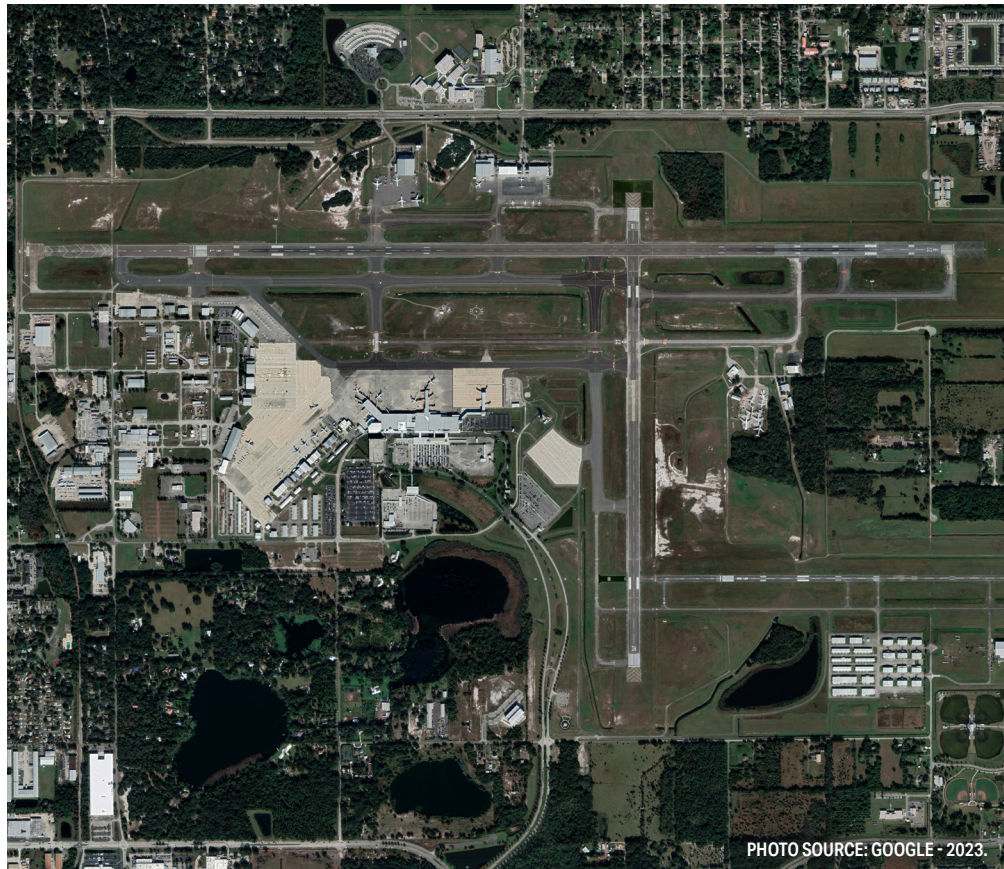
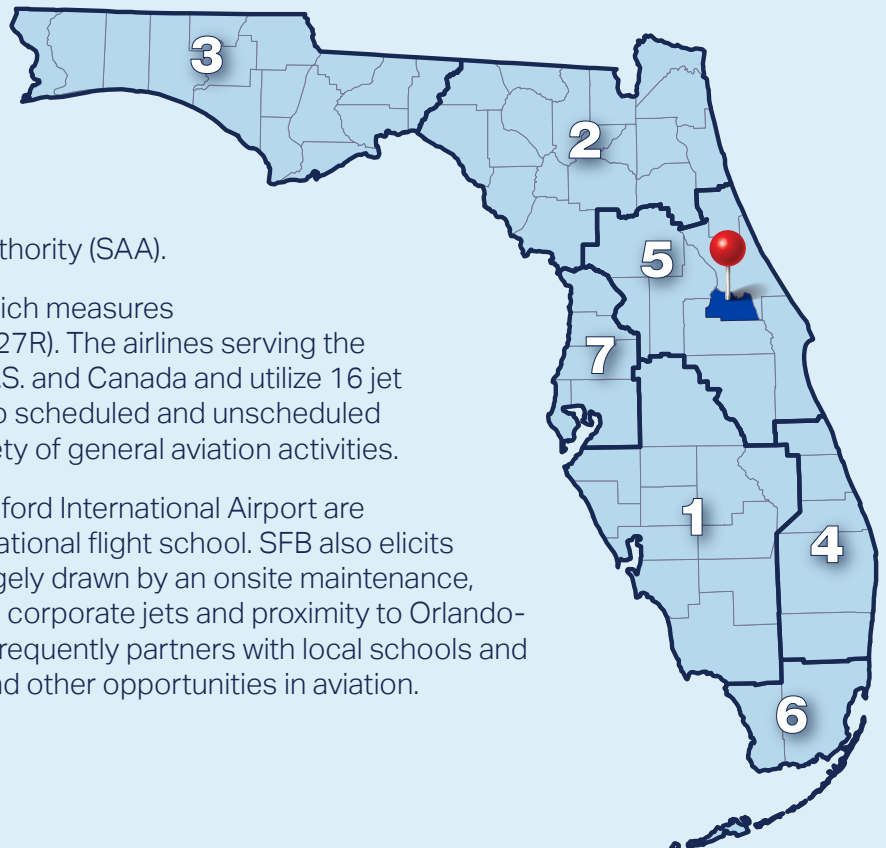


PHOTO SOURCE: GOOGLE - 2023.

Orlando Sanford International Airport (SFB) is a Primary Small Hub commercial service airport located in Seminole County within the City of Sanford, approximately 18 miles northeast of downtown Orlando. The airport is publicly owned and operated by the Sanford Airport Authority (SAA).

The airport has four runways, the longest of which measures 11,002 feet long by 150 feet wide (Runway 9L-27R). The airlines serving the airport offer flights to 75+ destinations in the U.S. and Canada and utilize 16 jet bridges in the passenger terminal. In addition to scheduled and unscheduled passenger service, SFB accommodates a variety of general aviation activities.

Notably, most of the operations at Orlando Sanford International Airport are associated with flight training through a large national flight school. SFB also elicits a great deal of corporate/business aviation, largely drawn by an onsite maintenance, repair, and overhaul (MRO) tenant that caters to corporate jets and proximity to Orlando-area attractions. In the community, the airport frequently partners with local schools and organizations to expose students to careers and other opportunities in aviation.



ECONOMIC IMPACT



\$3.5B
ECONOMIC IMPACT (OUTPUT)



\$1.9B
VALUE ADDED



\$1.1B
PAYROLL



24,223
JOBS

Source: Florida Aviation Economic Impact Study.



GENERAL AVIATION ROLES



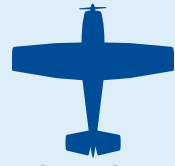
FLIGHT TRAINING



CORPORATE



TOURISM



RECREATIONAL / SPORT



BUSINESS / RECREATIONAL

COMMERCIAL AVIATION ROLES



AIR CARGO



TOURISM



BUSINESS



INTERNATIONAL

Source: FASP 2043 Update.

For more information on airport roles, please refer to the FAA's National Plan of Integrated Airport Systems (NPIAS).



ACTIVITY FORECASTS

OPERATIONS

389,001

2043

268,659

2023

ENPLANEMENTS

2,316,177

2043

1,399,528

2023

Source: FASP 2043 Update.



AIRPORT CHARACTERISTICS

1 #1 Airport for Operations by Allegiant Air

2 Located Close to Popular Attractions in Central Florida

3 Home to Approximately 300 Based Aircraft

RUNWAY INFORMATION (4)

Runway 9L-27R: 11,002' x 150'
Runway 18-36: 6,002' x 150'

Runway 9R-27L: 5,839' x 75'
Runway 9C-27C: 3,578' x 75'



Overview of the FASP 2043 Update:

Per Florida statute, the Florida Aviation System Plan (FASP) is periodically updated to summarize the airport and aviation needs in Florida while remaining consistent with the goals of the Florida Transportation Plan (FTP). The FASP 2043 Update focuses on reviewing the applicability of the various goals, objectives, and performance measures to support two primary goals: 1) provide for more efficiency in decision making within FDOT to support funding and development decisions, and 2) provide airports within the system with recommendations for development that support their individual missions while contributing to the overall strength and health of the Florida airport system.

