

SEBRING REGIONAL AIRPORT

SEF

Airport: Sebring Regional Airport (SEF)

City: Sebring, Florida

County: Highlands

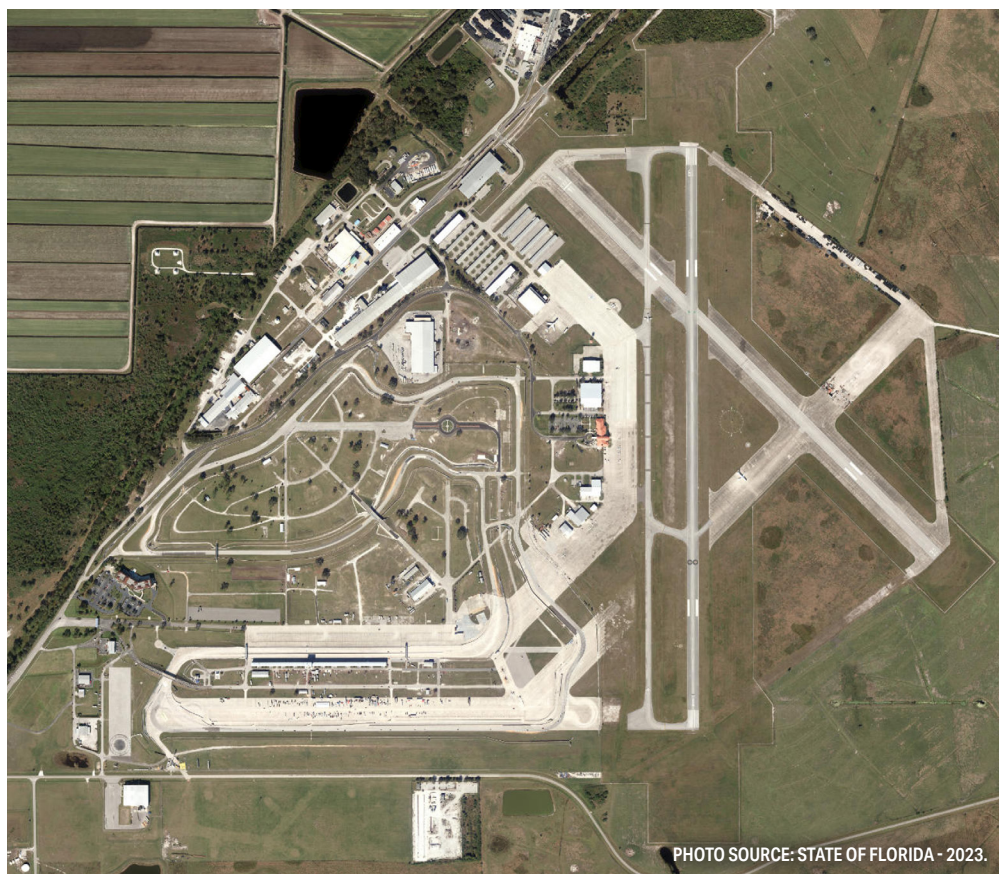
Sponsor: Sebring Airport Authority

Role: General Aviation (Regional)

CFASPP Region: Central (cfaspp.com)

FDOT District: 1

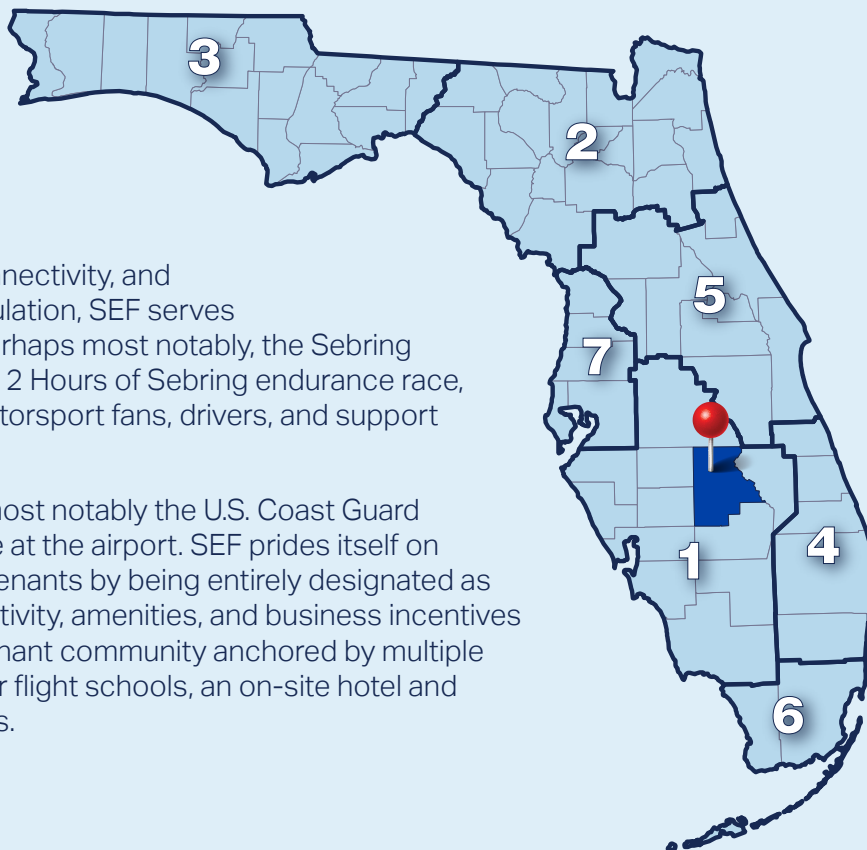
Website: [Sebring Regional](https://www.sebringairport.com)



Sebring Regional Airport (SEF) is a general aviation (GA) airport located near Sebring. The airport offers two paved, intersecting runways, the longest of which is 5,234 feet long by 100 feet wide (Runway 1-19).

With an adjacent rail line, excellent highway connectivity, and within 150 miles of 90 percent of Florida's population, SEF serves as an ideal multimodal hub in central Florida. Perhaps most notably, the Sebring International Raceway, home to the legendary 12 Hours of Sebring endurance race, is located adjacent to the airport, attracting motorsport fans, drivers, and support teams into the airport.

SEF also accommodates military operations, most notably the U.S. Coast Guard conducting an annual five-week training course at the airport. SEF prides itself on providing a business-friendly environment for tenants by being entirely designated as a Foreign Trade Zone. As a result of the connectivity, amenities, and business incentives provided by SEF, the airport boasts a vibrant tenant community anchored by multiple aircraft manufacturing and repair providers, four flight schools, an on-site hotel and restaurant, and many other types of businesses.



ECONOMIC IMPACT



\$421M
ECONOMIC IMPACT (OUTPUT)



\$194M
VALUE ADDED



\$107M
PAYROLL



2,303
JOBS



Source: Florida Aviation Economic Impact Study.

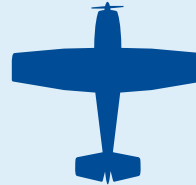
GENERAL AVIATION ROLES



FLIGHT
TRAINING



CORPORATE



RECREATIONAL /
SPORT



BUSINESS /
RECREATIONAL

Source: FASP 2043 Update.

For more information on airport roles, please refer to the FAA's National Plan of Integrated Airport Systems (NPIAS).



ACTIVITY FORECASTS

OPERATIONS

101,622

2043

72,949

2023

BASED AIRCRAFT

122

2043

97

2023



Source: FASP 2043 Update.

AIRPORT CHARACTERISTICS

- 1 Designated as a Foreign Trade Zone
- 2 Adjacent to Sebring International Raceway
- 3 Multimodal Hub with Adjacent Rail Line

RUNWAY INFORMATION (2)

Runway 1-19: 5,234' x 100'

Runway 14-32: 4,990' x 100'



Overview of the FASP 2043 Update:

Per Florida statute, the Florida Aviation System Plan (FASP) is periodically updated to summarize the airport and aviation needs in Florida while remaining consistent with the goals of the Florida Transportation Plan (FTP). The FASP 2043 Update focuses on reviewing the applicability of the various goals, objectives, and performance measures to support two primary goals: 1) provide for more efficiency in decision making within FDOT to support funding and development decisions, and 2) provide airports within the system with recommendations for development that support their individual missions while contributing to the overall strength and health of the Florida airport system.

