

# ORLANDO EXECUTIVE AIRPORT

## ORL



ORLANDO  
EXECUTIVE  
AIRPORT | ORL

**Airport:** Executive Airport (ORL)  
**City:** Orlando, Florida  
**County:** Orange  
**Sponsor:** Greater Orlando Aviation Authority  
**Role:** General Aviation Reliever (National)  
**CFASPP Region:** East Central ([cfaspp.com](https://cfaspp.com))  
**FDOT District:** 5  
**Website:** [ORL Executive](https://www.goraa.com)

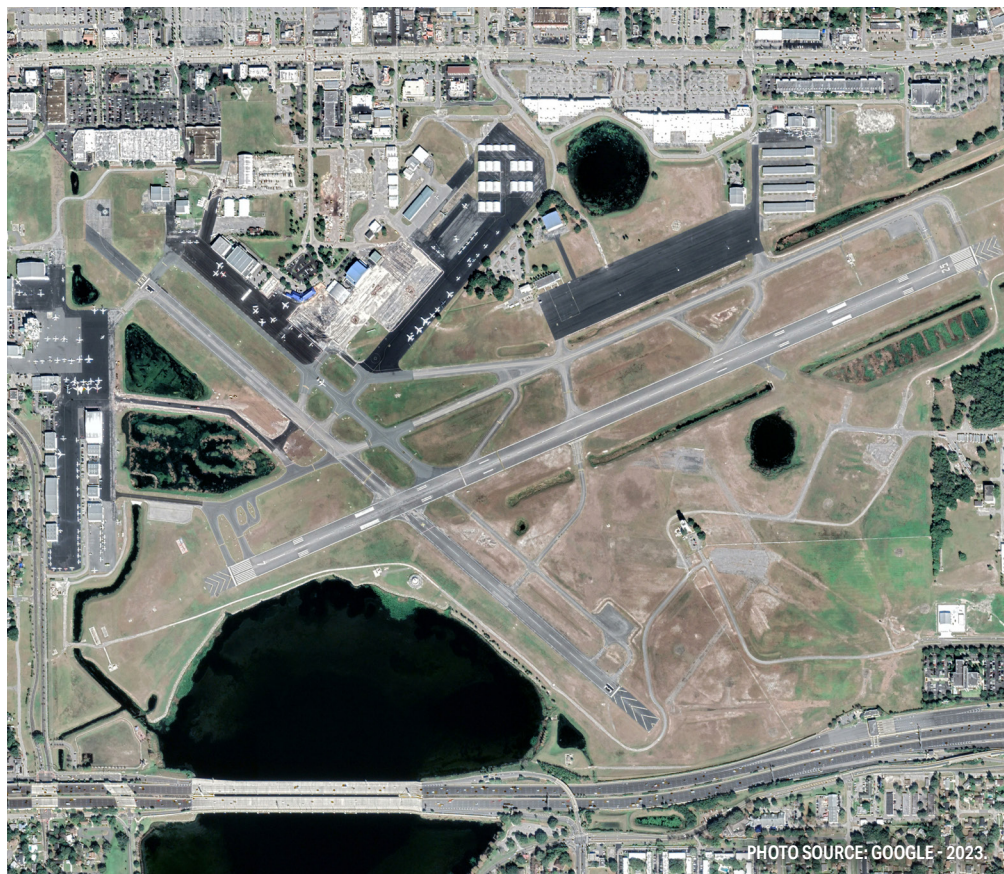
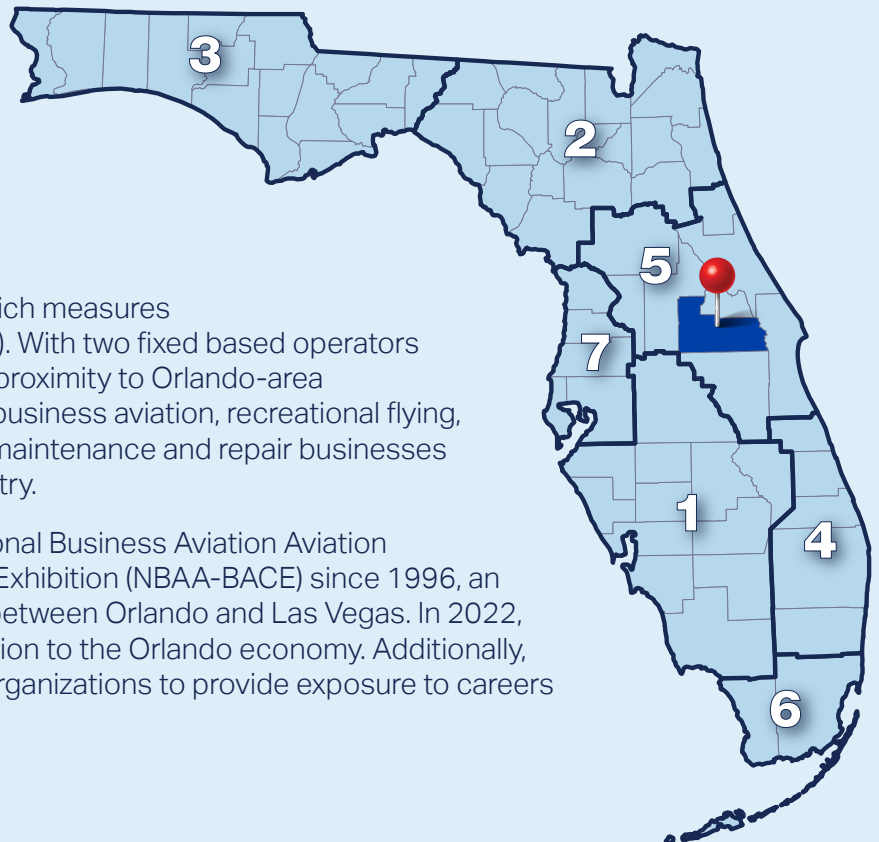


PHOTO SOURCE: GOOGLE - 2023.

Orlando Executive Airport (ORL) is a general aviation (GA) airport located adjacent to downtown Orlando and serves as an FAA-designated reliever to Orlando International Airport (MCO). The airport is publicly owned and operated by the Greater Orlando Aviation Authority (GOAA).

The airport has two runways, the longest of which measures 6,004 feet long by 150 feet wide (Runway 7-25). With two fixed based operators and plans for a third, five flight schools, and its proximity to Orlando-area attractions, ORL primarily supports corporate/business aviation, recreational flying, and flight training. Additionally, several aircraft maintenance and repair businesses attract pilots and aircraft from around the country.

Orlando Executive Airport has hosted the National Business Aviation Association's Business Aviation Convention & Exhibition (NBAA-BACE) since 1996, an annual conference that is traditionally rotated between Orlando and Las Vegas. In 2022, NBAA-BACE contributed an estimated \$51 million to the Orlando economy. Additionally, the airport regularly partners with local youth organizations to provide exposure to careers and other opportunities in aviation.



## ECONOMIC IMPACT



**\$577M**  
ECONOMIC IMPACT (OUTPUT)



**\$309M**  
VALUE ADDED



**\$186M**  
PAYROLL



**4,078**  
JOBS



Source: Florida Aviation Economic Impact Study.

## GENERAL AVIATION ROLES



FLIGHT  
TRAINING



CORPORATE



TOURISM



BUSINESS /  
RECREATIONAL

Source: FASP 2043 Update.

For more information on airport roles, please refer to the FAA's National Plan of Integrated Airport Systems (NPIAS).



## ACTIVITY FORECASTS

### OPERATIONS

**227,219**

2043

**181,227**

2023

### BASED AIRCRAFT

**315**

2043

**251**

2023



Source: FASP 2043 Update.

## AIRPORT CHARACTERISTICS

**1** Located Adjacent to Downtown Orlando

**2** On-Site U.S. Customs & Border Protection Facility

**3** Reliever Airport for Orlando International Airport

## RUNWAY INFORMATION (2)

Runway 7-25: 6,004' x 150'

Runway 13-31: 4,625' x 100'



### Overview of the FASP 2043 Update:

Per Florida statute, the Florida Aviation System Plan (FASP) is periodically updated to summarize the airport and aviation needs in Florida while remaining consistent with the goals of the Florida Transportation Plan (FTP). The FASP 2043 Update focuses on reviewing the applicability of the various goals, objectives, and performance measures to support two primary goals: 1) provide for more efficiency in decision making within FDOT to support funding and development decisions, and 2) provide airports within the system with recommendations for development that support their individual missions while contributing to the overall strength and health of the Florida airport system.

