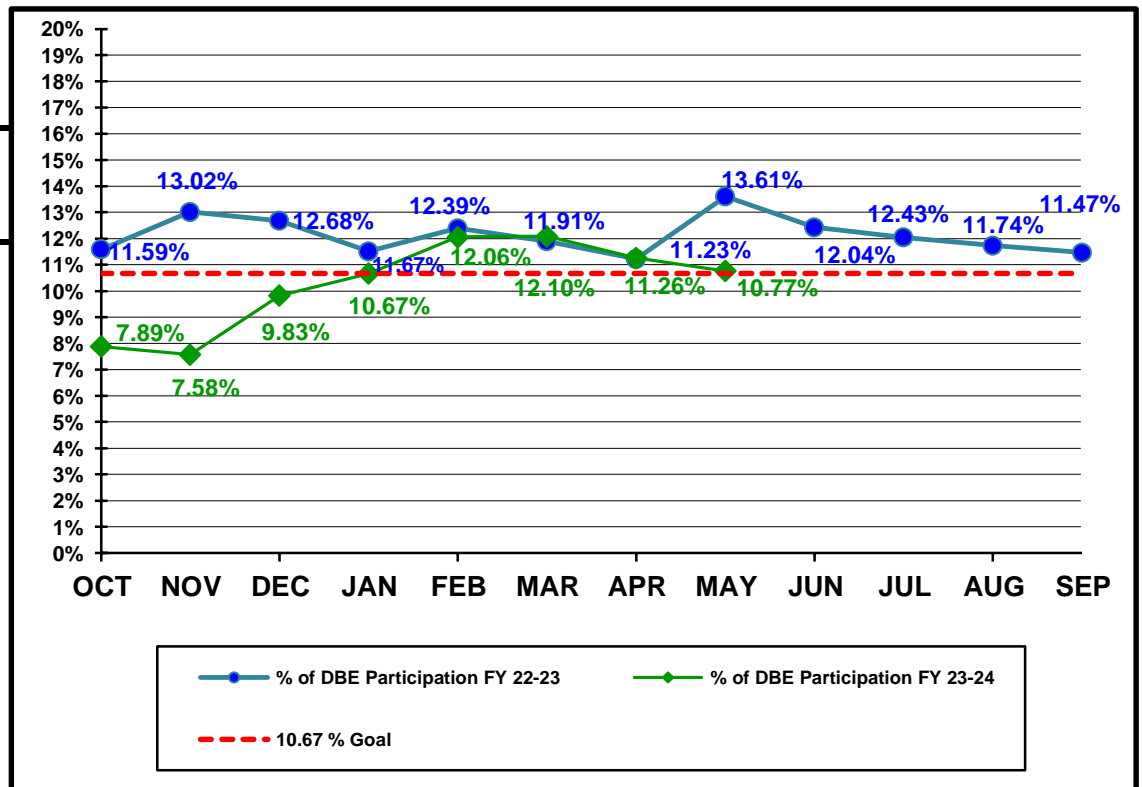


**Florida Department of Transportation
Disadvantaged Business Enterprises Anticipated Participation
FEDERAL FUNDED PROJECTS
As of 5/31/2024**

YTD COMPARISON BETWEEN FY 22-23 AND FY 23-24

	Contract \$ with DBEs Reported FY 22-23	DBE Participation \$ FY 22-23	Contract \$ with DBEs Reported FY 23-24	DBE Participation \$ FY 23-24
OCT	\$149,157,308	\$17,291,139	\$241,506,937	\$19,055,901
NOV	\$282,146,289	\$36,723,908	\$311,838,560	\$23,632,413
DEC	\$360,669,011	\$45,728,801	\$503,257,921	\$49,475,456
JAN	\$617,526,485	\$71,105,756	\$942,690,577	\$100,583,789
FEB	\$737,542,050	\$91,402,187	\$1,087,477,908	\$131,199,776
MAR	\$874,391,919	\$104,099,676	\$1,200,328,326	\$145,180,297
APR	\$1,089,665,153	\$122,379,405	\$1,419,346,192	\$159,813,459
MAY	\$1,268,669,783	\$172,653,920	\$1,680,646,734	\$180,958,151
JUN	\$1,543,290,091	\$191,858,324		
JUL	\$1,709,068,998	\$205,819,018		
AUG	\$1,927,002,881	\$226,216,818		
SEP	\$2,444,699,974	\$280,394,968		



Florida Department of Transportation
Executive Board Report
Disadvantaged Business Enterprise Anticipated Participation
For Reporting Period: 10/1/2023 to 5/31/2024
Federal Funded Dollars
By District and Type of Work

	* Construction / Maintenance			Professional Services			Total		
District	Amount	DBE Dollars	DBE %	Amount	DBE Dollars	DBE %	Amount	DBE Dollars	DBE %
01	\$196,878,337	\$10,075,869	5.12%	\$23,508,432	\$8,082,147	34.38%	\$220,386,769	\$18,158,016	8.24%
02	\$213,895,703	\$15,691,276	7.34%	\$36,726,299	\$7,084,226	19.29%	\$250,622,002	\$22,775,502	9.09%
03	\$195,020,508	\$19,053,464	9.77%	\$54,839,535	\$6,175,361	11.26%	\$249,860,044	\$25,228,824	10.10%
04	\$113,946,300	\$39,034,410	34.26%	\$13,053,269	\$4,119,597	31.56%	\$126,999,569	\$43,154,008	33.98%
05	\$212,693,562	\$21,484,498	10.10%	\$59,641,399	\$7,681,167	12.88%	\$272,334,961	\$29,165,665	10.71%
06	\$96,745,188	\$18,418,567	19.04%	\$10,257,071	\$546,268	5.33%	\$107,002,259	\$18,964,835	17.72%
07	\$426,502,721	\$20,705,092	4.85%	\$14,229,143	\$2,735,603	19.23%	\$440,731,864	\$23,440,695	5.32%
08	\$0	\$0	0.00%	\$0	\$0	0.00%	\$0	\$0	0.00%
CO	\$0	\$0	0.00%	\$12,709,265	\$70,606	0.56%	\$12,709,265	\$70,606	0.56%
Total	\$1,455,682,319	\$144,463,176	9.92%	\$224,964,413	\$36,494,975	16.22%	\$1,680,646,734	\$180,958,151	10.77%

* Includes contracts with a submitted Commitment in the EOC System.

Florida Department of Transportation
 Executive Board Report
 Disadvantaged Business Enterprise Anticipated Participation
 For Reporting Period: 10/1/2023 to 5/31/2024
 State Funded Dollars
 By District and Type of Work

	* Construction / Maintenance			Professional Services			Total		
District	Amount	DBE Dollars	DBE %	Amount	DBE Dollars	DBE %	Amount	DBE Dollars	DBE %
01	\$145,867,399	\$13,440,768	9.21%	\$85,866,488	\$19,129,317	22.28%	\$231,733,887	\$32,570,085	14.05%
02	\$150,350,312	\$4,962,880	3.30%	\$95,706,455	\$9,660,879	10.09%	\$246,056,767	\$14,623,759	5.94%
03	\$162,384,116	\$16,364,891	10.08%	\$63,020,990	\$9,429,171	14.96%	\$225,405,106	\$25,794,062	11.44%
04	\$77,571,633	\$15,808,523	20.38%	\$73,422,227	\$16,773,830	22.85%	\$150,993,860	\$32,582,353	21.58%
05	\$146,110,153	\$8,589,450	5.88%	\$117,565,341	\$21,263,846	18.09%	\$263,675,494	\$29,853,296	11.32%
06	\$36,878,727	\$3,990,644	10.82%	\$102,844,065	\$8,281,479	8.05%	\$139,722,791	\$12,272,123	8.78%
07	\$131,452,525	\$9,786,329	7.44%	\$65,909,391	\$14,007,798	21.25%	\$197,361,916	\$23,794,127	12.06%
08	\$304,670,078	\$29,657,777	9.73%	\$134,710,637	\$22,822,905	16.94%	\$439,380,715	\$52,480,682	11.94%
CO	\$0	\$0	0.00%	\$36,747,579	\$1,501,817	4.09%	\$36,747,579	\$1,501,817	4.09%
Total	\$1,155,284,943	\$102,601,262	8.88%	\$775,793,173	\$122,871,042	15.84%	\$1,931,078,116	\$225,472,303	11.68%

* Includes contracts with a submitted Commitment in the EOC System.

Florida Department of Transportation
 Executive Board Report
 Disadvantaged Business Enterprise Anticipated Participation
 For Reporting Period: 10/1/2023 to 5/31/2024
 Federal and State Funded Dollars
 By District and Type of Work

	* Construction / Maintenance			Professional Services			Total		
District	Amount	DBE Dollars	DBE %	Amount	DBE Dollars	DBE %	Amount	DBE Dollars	DBE %
01	\$342,745,736	\$23,516,637	6.86%	\$109,374,920	\$27,211,464	24.88%	\$452,120,656	\$50,728,101	11.22%
02	\$364,246,015	\$20,654,156	5.67%	\$132,432,754	\$16,745,104	12.64%	\$496,678,769	\$37,399,260	7.53%
03	\$357,404,624	\$35,418,355	9.91%	\$117,860,525	\$15,604,532	13.24%	\$475,265,149	\$51,022,886	10.74%
04	\$191,517,933	\$54,842,934	28.64%	\$86,475,497	\$20,893,427	24.16%	\$277,993,429	\$75,736,360	27.24%
05	\$358,803,715	\$30,073,948	8.38%	\$177,206,740	\$28,945,013	16.33%	\$536,010,455	\$59,018,961	11.01%
06	\$133,623,914	\$22,409,211	16.77%	\$113,101,136	\$8,827,747	7.81%	\$246,725,050	\$31,236,958	12.66%
07	\$557,955,246	\$30,491,421	5.46%	\$80,138,534	\$16,743,402	20.89%	\$638,093,780	\$47,234,823	7.40%
08	\$304,670,078	\$29,657,777	9.73%	\$134,710,637	\$22,822,905	16.94%	\$439,380,715	\$52,480,682	11.94%
CO	\$0	\$0	0.00%	\$49,456,845	\$1,572,422	3.18%	\$49,456,845	\$1,572,422	3.18%
Total	\$2,610,967,261	\$247,064,439	9.46%	\$1,000,757,588	\$159,366,016	15.92%	\$3,611,724,849	\$406,430,454	11.25%

* Includes contracts with a submitted Commitment in the EOC System.