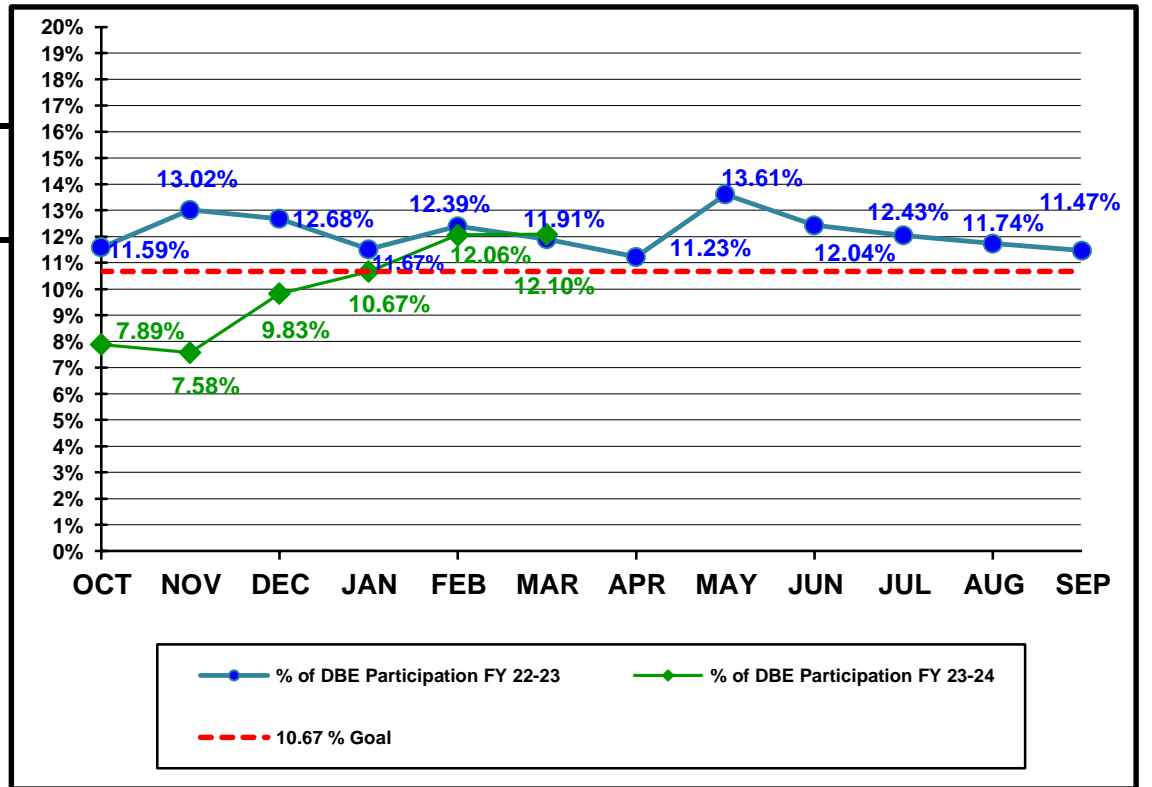


**Florida Department of Transportation
Disadvantaged Business Enterprises Anticipated Participation
FEDERAL FUNDED PROJECTS
As of 3/31/2024**

YTD COMPARISON BETWEEN FY 22-23 AND FY 23-24

	Contract \$ with DBEs Reported FY 22-23	DBE Participation \$ FY 22-23	Contract \$ with DBEs Reported FY 23-24	DBE Participation \$ FY 23-24
OCT	\$149,157,308	\$17,291,139	\$241,506,937	\$19,055,901
NOV	\$282,146,289	\$36,723,908	\$311,838,560	\$23,632,413
DEC	\$360,669,011	\$45,728,801	\$503,257,921	\$49,475,456
JAN	\$617,526,485	\$71,105,756	\$942,690,577	\$100,583,789
FEB	\$737,542,050	\$91,402,187	\$1,087,477,908	\$131,199,776
MAR	\$874,391,919	\$104,099,676	\$1,200,328,326	\$145,180,297
APR	\$1,089,665,153	\$122,379,405		
MAY	\$1,268,669,783	\$172,653,920		
JUN	\$1,543,290,091	\$191,858,324		
JUL	\$1,709,068,998	\$205,819,018		
AUG	\$1,927,002,881	\$226,216,818		
SEP	\$2,444,699,974	\$280,394,968		



Florida Department of Transportation
 Executive Board Report
 Disadvantaged Business Enterprise Anticipated Participation
 For Reporting Period: 10/1/2023 to 3/31/2024
 Federal Funded Dollars
 By District and Type of Work

	* Construction / Maintenance			Professional Services			Total		
District	Amount	DBE Dollars	DBE %	Amount	DBE Dollars	DBE %	Amount	DBE Dollars	DBE %
01	\$149,335,420	\$9,604,547	6.43%	\$14,584,944	\$4,658,373	31.94%	\$163,920,364	\$14,262,920	8.70%
02	\$122,760,575	\$9,857,958	8.03%	\$23,987,846	\$4,346,266	18.12%	\$146,748,420	\$14,204,224	9.68%
03	\$133,240,060	\$11,320,399	8.50%	\$21,944,158	\$5,366,597	24.46%	\$155,184,217	\$16,686,996	10.75%
04	\$55,779,467	\$35,937,576	64.43%	\$3,783,133	\$2,993,276	79.12%	\$59,562,600	\$38,930,852	65.36%
05	\$195,109,697	\$18,399,907	9.43%	\$32,261,988	\$4,562,695	14.14%	\$227,371,685	\$22,962,602	10.10%
06	\$75,960,438	\$16,088,181	21.18%	\$9,370,448	\$311,512	3.32%	\$85,330,886	\$16,399,693	19.22%
07	\$340,376,405	\$19,471,052	5.72%	\$12,100,484	\$2,233,291	18.46%	\$352,476,888	\$21,704,343	6.16%
08	\$0	\$0	0.00%	\$0	\$0	0.00%	\$0	\$0	0.00%
CO	\$0	\$0	0.00%	\$9,733,265	\$28,666	0.29%	\$9,733,265	\$28,666	0.29%
Total	\$1,072,562,062	\$120,679,620	11.25%	\$127,766,266	\$24,500,676	19.18%	\$1,200,328,326	\$145,180,297	12.10%

* Includes contracts with a submitted Commitment in the EOC System.

Florida Department of Transportation
 Executive Board Report
 Disadvantaged Business Enterprise Anticipated Participation
 For Reporting Period: 10/1/2023 to 3/31/2024
 State Funded Dollars
 By District and Type of Work

	* Construction / Maintenance			Professional Services			Total		
District	Amount	DBE Dollars	DBE %	Amount	DBE Dollars	DBE %	Amount	DBE Dollars	DBE %
01	\$84,385,557	\$8,094,534	9.59%	\$52,292,903	\$13,589,889	25.99%	\$136,678,460	\$21,684,423	15.87%
02	\$85,634,475	\$3,834,129	4.48%	\$71,607,580	\$6,671,106	9.32%	\$157,242,055	\$10,505,234	6.68%
03	\$94,361,729	\$10,357,172	10.98%	\$45,055,782	\$8,591,108	19.07%	\$139,417,511	\$18,948,280	13.59%
04	\$52,429,515	\$11,309,126	21.57%	\$51,662,089	\$13,596,702	26.32%	\$104,091,604	\$24,905,828	23.93%
05	\$90,791,402	\$6,960,777	7.67%	\$84,580,137	\$15,450,796	18.27%	\$175,371,539	\$22,411,573	12.78%
06	\$22,357,016	\$28,792,440	> 100%	\$81,759,139	\$6,005,700	7.35%	\$104,116,155	\$34,798,140	33.42%
07	\$73,179,617	\$8,890,393	12.15%	\$49,610,339	\$9,590,662	19.33%	\$122,789,956	\$18,481,056	15.05%
08	\$84,555,559	\$18,322,369	21.67%	\$108,560,754	\$18,810,315	17.33%	\$193,116,314	\$37,132,685	19.23%
CO	\$0	\$0	0.00%	\$27,328,502	\$1,128,820	4.13%	\$27,328,502	\$1,128,820	4.13%
Total	\$587,694,870	\$96,560,940	16.43%	\$572,457,225	\$93,435,098	16.32%	\$1,160,152,095	\$189,996,038	16.38%

* Includes contracts with a submitted Commitment in the EOC System.

Florida Department of Transportation
 Executive Board Report
 Disadvantaged Business Enterprise Anticipated Participation
 For Reporting Period: 10/1/2023 to 3/31/2024
 Federal and State Funded Dollars
 By District and Type of Work

	* Construction / Maintenance			Professional Services			Total		
District	Amount	DBE Dollars	DBE %	Amount	DBE Dollars	DBE %	Amount	DBE Dollars	DBE %
01	\$233,720,977	\$17,699,081	7.57%	\$66,877,847	\$18,248,262	27.29%	\$300,598,823	\$35,947,343	11.96%
02	\$208,395,050	\$13,692,087	6.57%	\$95,595,426	\$11,017,372	11.52%	\$303,990,476	\$24,709,458	8.13%
03	\$227,601,789	\$21,677,571	9.52%	\$66,999,939	\$13,957,705	20.83%	\$294,601,728	\$35,635,276	12.10%
04	\$108,208,982	\$47,246,702	43.66%	\$55,445,222	\$16,589,978	29.92%	\$163,654,204	\$63,836,680	39.01%
05	\$285,901,099	\$25,360,684	8.87%	\$116,842,125	\$20,013,491	17.13%	\$402,743,224	\$45,374,175	11.27%
06	\$98,317,454	\$44,880,621	45.65%	\$91,129,586	\$6,317,212	6.93%	\$189,447,041	\$51,197,834	27.02%
07	\$413,556,021	\$28,361,446	6.86%	\$61,710,823	\$11,823,953	19.16%	\$475,266,844	\$40,185,399	8.46%
08	\$84,555,559	\$18,322,369	21.67%	\$108,560,754	\$18,810,315	17.33%	\$193,116,314	\$37,132,685	19.23%
CO	\$0	\$0	0.00%	\$37,061,767	\$1,157,486	3.12%	\$37,061,767	\$1,157,486	3.12%
Total	\$1,660,256,931	\$217,240,561	13.08%	\$700,223,489	\$117,935,774	16.84%	\$2,360,480,421	\$335,176,335	14.20%

* Includes contracts with a submitted Commitment in the EOC System.