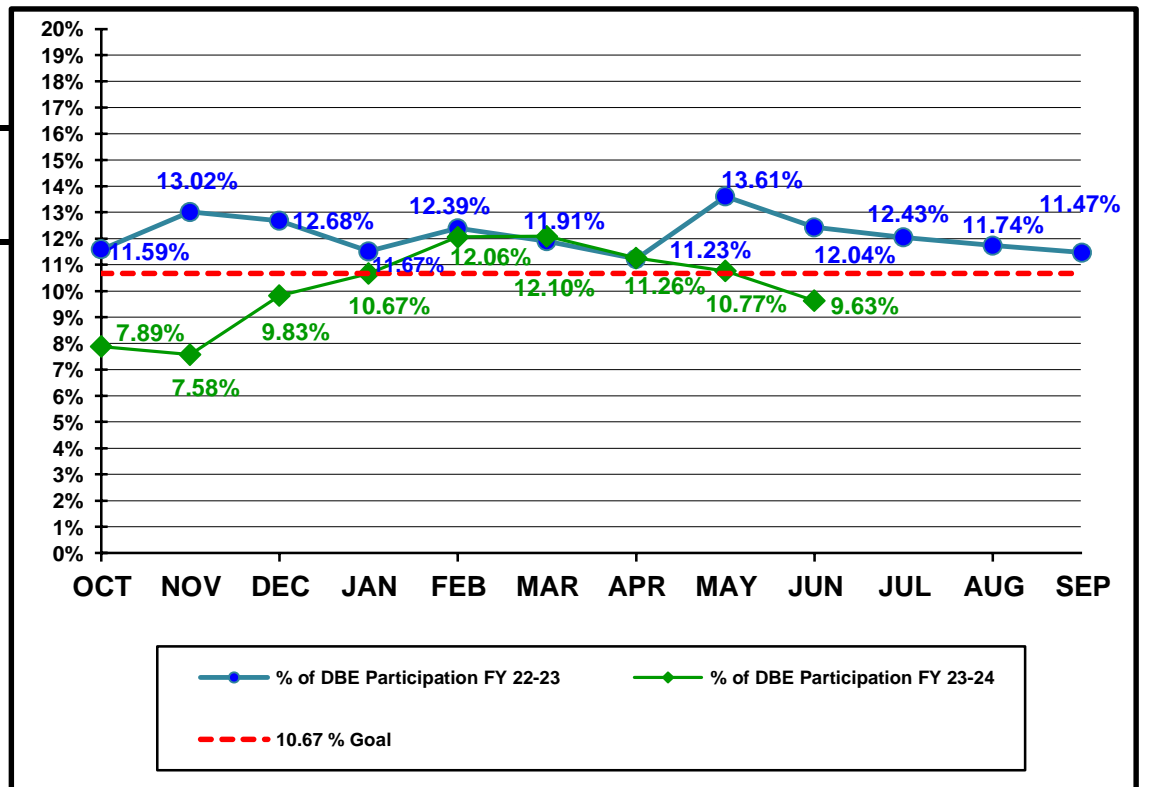


**Florida Department of Transportation
Disadvantaged Business Enterprises Anticipated Participation
FEDERAL FUNDED PROJECTS
As of 6/30/2024**

YTD COMPARISON BETWEEN FY 22-23 AND FY 23-24

	Contract \$ with DBEs Reported FY 22-23	DBE Participation \$ FY 22-23	Contract \$ with DBEs Reported FY 23-24	DBE Participation \$ FY 23-24
OCT	\$149,157,308	\$17,291,139	\$241,506,937	\$19,055,901
NOV	\$282,146,289	\$36,723,908	\$311,838,560	\$23,632,413
DEC	\$360,669,011	\$45,728,801	\$503,257,921	\$49,475,456
JAN	\$617,526,485	\$71,105,756	\$942,690,577	\$100,583,789
FEB	\$737,542,050	\$91,402,187	\$1,087,477,908	\$131,199,776
MAR	\$874,391,919	\$104,099,676	\$1,200,328,326	\$145,180,297
APR	\$1,089,665,153	\$122,379,405	\$1,419,346,192	\$159,813,459
MAY	\$1,268,669,783	\$172,653,920	\$1,680,646,734	\$180,958,151
JUN	\$1,543,290,091	\$191,858,324	\$2,189,957,702	\$210,896,621
JUL	\$1,709,068,998	\$205,819,018		
AUG	\$1,927,002,881	\$226,216,818		
SEP	\$2,444,699,974	\$280,394,968		



Florida Department of Transportation
 Executive Board Report
 Disadvantaged Business Enterprise Anticipated Participation
 For Reporting Period: 10/1/2023 to 6/30/2024
 Federal Funded Dollars
 By District and Type of Work

	* Construction / Maintenance			Professional Services			Total		
District	Amount	DBE Dollars	DBE %	Amount	DBE Dollars	DBE %	Amount	DBE Dollars	DBE %
01	\$285,562,478	\$17,935,170	6.28%	\$35,591,754	\$8,953,193	25.16%	\$321,154,233	\$26,888,363	8.37%
02	\$294,839,080	\$16,607,303	5.63%	\$42,719,274	\$8,109,806	18.98%	\$337,558,354	\$24,717,108	7.32%
03	\$355,224,072	\$19,423,213	5.47%	\$55,388,982	\$6,458,370	11.66%	\$410,613,054	\$25,881,583	6.30%
04	\$116,862,666	\$43,450,802	37.18%	\$20,134,385	\$4,905,139	24.36%	\$136,997,051	\$48,355,941	35.30%
05	\$272,574,692	\$22,200,974	8.14%	\$70,624,666	\$9,953,327	14.09%	\$343,199,358	\$32,154,301	9.37%
06	\$131,266,240	\$23,393,105	17.82%	\$11,500,888	\$1,249,098	10.86%	\$142,767,128	\$24,642,203	17.26%
07	\$437,168,872	\$23,781,964	5.44%	\$44,810,709	\$4,397,323	9.81%	\$481,979,581	\$28,179,287	5.85%
08	\$0	\$0	0.00%	\$0	\$0	0.00%	\$0	\$0	0.00%
CO	\$0	\$0	0.00%	\$15,688,943	\$77,834	0.50%	\$15,688,943	\$77,834	0.50%
Total	\$1,893,498,100	\$166,792,531	8.81%	\$296,459,601	\$44,104,090	14.88%	\$2,189,957,702	\$210,896,621	9.63%

* Includes contracts with a submitted Commitment in the EOC System.

Florida Department of Transportation
 Executive Board Report
 Disadvantaged Business Enterprise Anticipated Participation
 For Reporting Period: 10/1/2023 to 6/30/2024
 State Funded Dollars
 By District and Type of Work

	* Construction / Maintenance			Professional Services			Total		
District	Amount	DBE Dollars	DBE %	Amount	DBE Dollars	DBE %	Amount	DBE Dollars	DBE %
01	\$176,090,777	\$14,838,802	8.43%	\$93,722,478	\$20,619,822	22.00%	\$269,813,256	\$35,458,623	13.14%
02	\$158,268,889	\$6,509,942	4.11%	\$107,296,036	\$11,308,141	10.54%	\$265,564,925	\$17,818,082	6.71%
03	\$207,475,160	\$16,892,494	8.14%	\$66,471,260	\$9,972,317	15.00%	\$273,946,420	\$26,864,812	9.81%
04	\$81,322,072	\$16,386,702	20.15%	\$90,972,208	\$18,620,362	20.47%	\$172,294,280	\$35,007,065	20.32%
05	\$151,587,280	\$9,783,095	6.45%	\$134,357,271	\$25,254,813	18.80%	\$285,944,551	\$35,037,908	12.25%
06	\$40,127,878	\$2,132,097	5.31%	\$110,632,128	\$9,337,074	8.44%	\$150,760,006	\$11,469,171	7.61%
07	\$149,793,306	\$11,438,854	7.64%	\$79,055,442	\$17,036,968	21.55%	\$228,848,747	\$28,475,822	12.44%
08	\$184,410,170	\$30,962,870	16.79%	\$183,999,683	\$25,731,979	13.98%	\$368,409,853	\$56,694,849	15.39%
CO	\$0	\$0	0.00%	\$43,170,010	\$1,640,917	3.80%	\$43,170,010	\$1,640,917	3.80%
Total	\$1,149,075,532	\$108,944,856	9.48%	\$909,676,516	\$139,522,393	15.34%	\$2,058,752,047	\$248,467,249	12.07%

* Includes contracts with a submitted Commitment in the EOC System.

Florida Department of Transportation
 Executive Board Report
 Disadvantaged Business Enterprise Anticipated Participation
 For Reporting Period: 10/1/2023 to 6/30/2024
 Federal and State Funded Dollars
 By District and Type of Work

	* Construction / Maintenance			Professional Services			Total		
District	Amount	DBE Dollars	DBE %	Amount	DBE Dollars	DBE %	Amount	DBE Dollars	DBE %
01	\$461,653,256	\$32,773,972	7.10%	\$129,314,233	\$29,573,015	22.87%	\$590,967,488	\$62,346,987	10.55%
02	\$453,107,969	\$23,117,244	5.10%	\$150,015,310	\$19,417,946	12.94%	\$603,123,279	\$42,535,190	7.05%
03	\$562,699,233	\$36,315,707	6.45%	\$121,860,241	\$16,430,687	13.48%	\$684,559,474	\$52,746,394	7.71%
04	\$198,184,738	\$59,837,504	30.19%	\$111,106,593	\$23,525,501	21.17%	\$309,291,331	\$83,363,006	26.95%
05	\$424,161,972	\$31,984,069	7.54%	\$204,981,937	\$35,208,140	17.18%	\$629,143,909	\$67,192,210	10.68%
06	\$171,394,118	\$25,525,203	14.89%	\$122,133,016	\$10,586,172	8.67%	\$293,527,134	\$36,111,375	12.30%
07	\$586,962,178	\$35,220,818	6.00%	\$123,866,151	\$21,434,291	17.30%	\$710,828,329	\$56,655,108	7.97%
08	\$184,410,170	\$30,962,870	16.79%	\$183,999,683	\$25,731,979	13.98%	\$368,409,853	\$56,694,849	15.39%
CO	\$0	\$0	0.00%	\$58,858,953	\$1,718,752	2.92%	\$58,858,953	\$1,718,752	2.92%
Total	\$3,042,573,634	\$275,737,387	9.06%	\$1,206,136,117	\$183,626,483	15.22%	\$4,248,709,749	\$459,363,869	10.81%

* Includes contracts with a submitted Commitment in the EOC System.