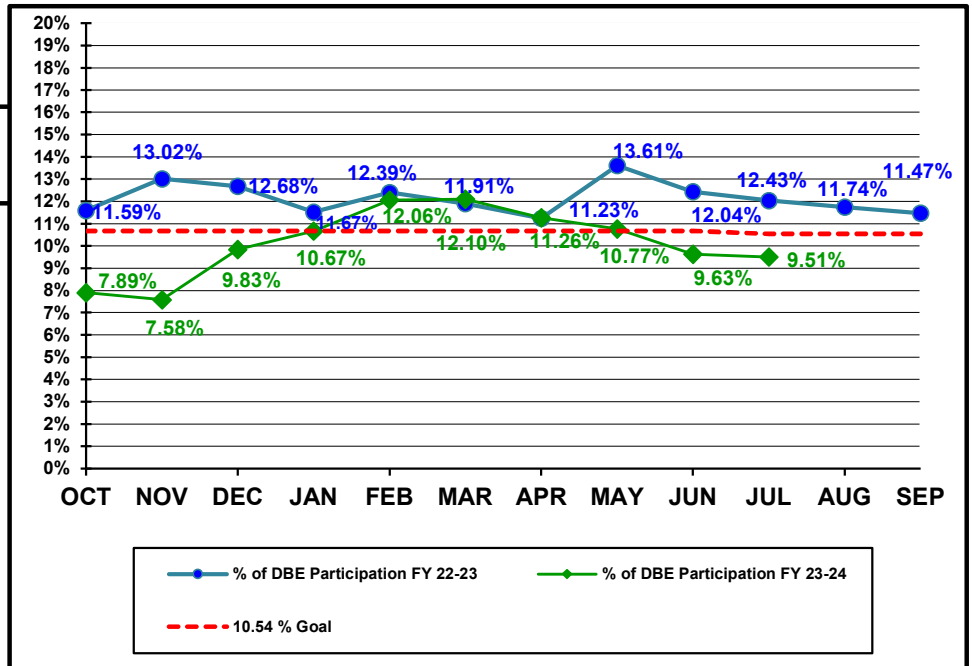


**Florida Department of Transportation
Disadvantaged Business Enterprises Anticipated Participation
FEDERAL FUNDED PROJECTS
As of 7/31/2024**

YTD COMPARISON BETWEEN FY 22-23 AND FY 23-24

	Contract \$ with DBEs Reported FY 22-23	DBE Participation \$ FY 22-23	Contract \$ with DBEs Reported FY 23-24	DBE Participation \$ FY 23-24
OCT	\$149,157,308	\$17,291,139	\$241,506,937	\$19,055,901
NOV	\$282,146,289	\$36,723,908	\$311,838,560	\$23,632,413
DEC	\$360,669,011	\$45,728,801	\$503,257,921	\$49,475,456
JAN	\$617,526,485	\$71,105,756	\$942,690,577	\$100,583,789
FEB	\$737,542,050	\$91,402,187	\$1,087,477,908	\$131,199,776
MAR	\$874,391,919	\$104,099,676	\$1,200,328,326	\$145,180,297
APR	\$1,089,665,153	\$122,379,405	\$1,419,346,192	\$159,813,459
MAY	\$1,268,669,783	\$172,653,920	\$1,680,646,734	\$180,958,151
JUN	\$1,543,290,091	\$191,858,324	\$2,189,957,702	\$210,896,621
JUL	\$1,709,068,998	\$205,819,018	\$2,596,412,966	\$246,858,655
AUG	\$1,927,002,881	\$226,216,818		
SEP	\$2,444,699,974	\$280,394,968		



Florida Department of Transportation
 Executive Board Report
 Disadvantaged Business Enterprise Anticipated Participation
 For Reporting Period: 10/1/2023 to 7/31/2024
 Federal Funded Dollars
 By District and Type of Work

	* Construction / Maintenance			Professional Services			Total		
District	Amount	DBE Dollars	DBE %	Amount	DBE Dollars	DBE %	Amount	DBE Dollars	DBE %
01	\$301,848,888	\$20,966,229	6.95%	\$45,861,228	\$9,131,867	19.91%	\$347,710,116	\$30,098,096	8.66%
02	\$363,893,743	\$18,371,382	5.05%	\$49,434,265	\$9,391,989	19.00%	\$413,328,008	\$27,763,371	6.72%
03	\$420,265,845	\$20,598,389	4.90%	\$65,571,097	\$7,756,993	11.83%	\$485,836,941	\$28,355,382	5.84%
04	\$197,822,401	\$48,521,909	24.53%	\$28,015,567	\$7,589,411	27.09%	\$225,837,968	\$56,111,320	24.85%
05	\$293,179,246	\$22,578,651	7.70%	\$71,885,755	\$10,983,120	15.28%	\$365,065,001	\$33,561,771	9.19%
06	\$131,378,896	\$22,672,392	17.26%	\$29,880,620	\$1,970,624	6.59%	\$161,259,516	\$24,643,016	15.28%
07	\$534,530,954	\$40,510,726	7.58%	\$45,822,904	\$5,730,591	12.51%	\$580,353,858	\$46,241,317	7.97%
08	\$0	\$0	0.00%	\$0	\$0	0.00%	\$0	\$0	0.00%
CO	\$0	\$0	0.00%	\$17,021,558	\$84,383	0.50%	\$17,021,558	\$84,383	0.50%
Total	\$2,242,919,973	\$194,219,678	8.66%	\$353,492,994	\$52,638,978	14.89%	\$2,596,412,966	\$246,858,655	9.51%

* Includes contracts with a submitted Commitment in the EOC System.

Florida Department of Transportation
 Executive Board Report
 Disadvantaged Business Enterprise Anticipated Participation
 For Reporting Period: 10/1/2023 to 7/31/2024
 State Funded Dollars
 By District and Type of Work

	* Construction / Maintenance			Professional Services			Total		
District	Amount	DBE Dollars	DBE %	Amount	DBE Dollars	DBE %	Amount	DBE Dollars	DBE %
01	\$185,310,625	\$13,645,657	7.36%	\$100,894,014	\$21,983,948	21.79%	\$286,204,639	\$35,629,605	12.45%
02	\$162,899,630	\$6,529,500	4.01%	\$115,572,767	\$12,629,096	10.93%	\$278,472,397	\$19,158,596	6.88%
03	\$215,366,435	\$17,571,064	8.16%	\$106,516,742	\$13,659,240	12.82%	\$321,883,177	\$31,230,304	9.70%
04	\$84,538,479	\$18,370,760	21.73%	\$96,281,663	\$20,565,231	21.36%	\$180,820,142	\$38,935,991	21.53%
05	\$170,738,820	\$12,356,743	7.24%	\$144,869,189	\$28,080,106	19.38%	\$315,608,009	\$40,436,849	12.81%
06	\$46,486,432	\$12,936,880	27.83%	\$118,011,839	\$10,725,961	9.09%	\$164,498,271	\$23,662,842	14.38%
07	\$231,901,462	\$14,032,770	6.05%	\$89,477,807	\$18,858,832	21.08%	\$321,379,269	\$32,891,602	10.23%
08	\$324,229,978	\$32,764,154	10.11%	\$201,870,197	\$27,989,833	13.87%	\$526,100,175	\$60,753,987	11.55%
CO	\$0	\$0	0.00%	\$46,157,517	\$2,095,233	4.54%	\$46,157,517	\$2,095,233	4.54%
Total	\$1,421,471,861	\$128,207,528	9.02%	\$1,019,651,735	\$156,587,480	15.36%	\$2,441,123,597	\$284,795,008	11.67%

* Includes contracts with a submitted Commitment in the EOC System.

Florida Department of Transportation
 Executive Board Report
 Disadvantaged Business Enterprise Anticipated Participation
 For Reporting Period: 10/1/2023 to 7/31/2024
 Federal and State Funded Dollars
 By District and Type of Work

	* Construction / Maintenance			Professional Services			Total		
District	Amount	DBE Dollars	DBE %	Amount	DBE Dollars	DBE %	Amount	DBE Dollars	DBE %
01	\$487,159,512	\$34,611,885	7.10%	\$146,755,242	\$31,115,815	21.20%	\$633,914,754	\$65,727,701	10.37%
02	\$526,793,374	\$24,900,882	4.73%	\$165,007,032	\$22,021,085	13.35%	\$691,800,406	\$46,921,967	6.78%
03	\$635,632,280	\$38,169,453	6.00%	\$172,087,839	\$21,416,233	12.44%	\$807,720,118	\$59,585,686	7.38%
04	\$282,360,880	\$66,892,669	23.69%	\$124,297,230	\$28,154,641	22.65%	\$406,658,110	\$95,047,311	23.37%
05	\$463,918,066	\$34,935,394	7.53%	\$216,754,944	\$39,063,226	18.02%	\$680,673,010	\$73,998,620	10.87%
06	\$177,865,328	\$35,609,273	20.02%	\$147,892,459	\$12,696,585	8.59%	\$325,757,787	\$48,305,858	14.83%
07	\$766,432,415	\$54,543,497	7.12%	\$135,300,711	\$24,589,423	18.17%	\$901,733,127	\$79,132,919	8.78%
08	\$324,229,978	\$32,764,154	10.11%	\$201,870,197	\$27,989,833	13.87%	\$526,100,175	\$60,753,987	11.55%
CO	\$0	\$0	0.00%	\$63,179,075	\$2,179,615	3.45%	\$63,179,075	\$2,179,615	3.45%
Total	\$3,664,391,833	\$322,427,207	8.80%	\$1,373,144,729	\$209,226,456	15.24%	\$5,037,536,563	\$531,653,663	10.55%

* Includes contracts with a submitted Commitment in the EOC System.