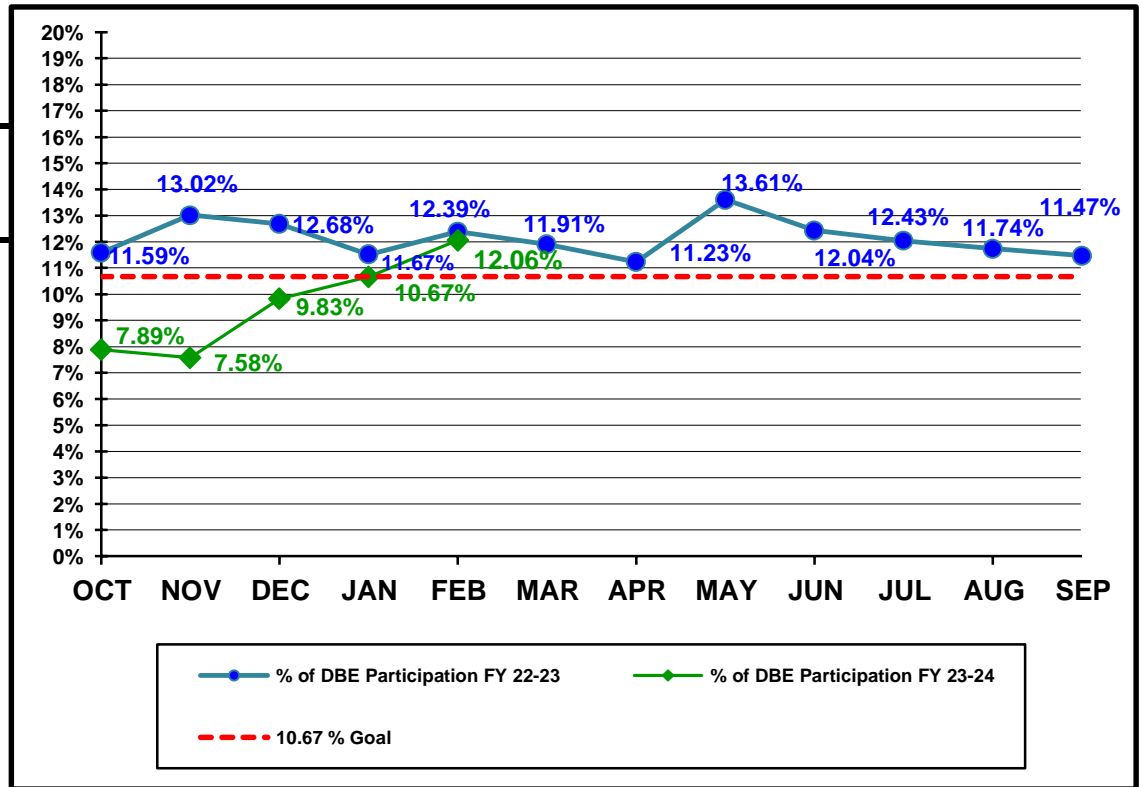


**Florida Department of Transportation
Disadvantaged Business Enterprises Anticipated Participation
FEDERAL FUNDED PROJECTS
As of 2/29/2024**

YTD COMPARISON BETWEEN FY 22-23 AND FY 23-24

	Contract \$ with DBEs Reported FY 22-23	DBE Participation \$ FY 22-23	Contract \$ with DBEs Reported FY 23-24	DBE Participation \$ FY 23-24
OCT	\$149,157,308	\$17,291,139	\$241,506,937	\$19,055,901
NOV	\$282,146,289	\$36,723,908	\$311,838,560	\$23,632,413
DEC	\$360,669,011	\$45,728,801	\$503,257,921	\$49,475,456
JAN	\$617,526,485	\$71,105,756	\$942,690,577	\$100,583,789
FEB	\$737,542,050	\$91,402,187	\$1,087,477,908	\$131,199,776
MAR	\$874,391,919	\$104,099,676		
APR	\$1,089,665,153	\$122,379,405		
MAY	\$1,268,669,783	\$172,653,920		
JUN	\$1,543,290,091	\$191,858,324		
JUL	\$1,709,068,998	\$205,819,018		
AUG	\$1,927,002,881	\$226,216,818		
SEP	\$2,444,699,974	\$280,394,968		



Florida Department of Transportation
 Executive Board Report
 Disadvantaged Business Enterprise Anticipated Participation
 For Reporting Period: 10/1/2023 to 2/29/2024
 Federal Funded Dollars
 By District and Type of Work

	* Construction / Maintenance			Professional Services			Total		
District	Amount	DBE Dollars	DBE %	Amount	DBE Dollars	DBE %	Amount	DBE Dollars	DBE %
01	\$147,901,483	\$10,238,305	6.92%	\$14,095,909	\$3,595,799	25.51%	\$161,997,392	\$13,834,103	8.54%
02	\$104,538,382	\$6,744,757	6.45%	\$16,332,180	\$2,998,231	18.36%	\$120,870,562	\$9,742,988	8.06%
03	\$112,180,674	\$9,954,012	8.87%	\$15,069,666	\$4,387,056	29.11%	\$127,250,340	\$14,341,068	11.27%
04	\$44,353,387	\$29,796,243	67.18%	\$3,115,649	\$2,616,328	83.97%	\$47,469,036	\$32,412,572	68.28%
05	\$160,260,987	\$17,734,469	11.07%	\$31,183,048	\$4,253,321	13.64%	\$191,444,035	\$21,987,790	11.49%
06	\$75,603,657	\$18,831,669	24.91%	\$8,670,110	\$185,209	2.14%	\$84,273,767	\$19,016,878	22.57%
07	\$336,651,290	\$18,680,593	5.55%	\$10,393,160	\$1,155,117	11.11%	\$347,044,449	\$19,835,711	5.72%
08	\$0	\$0	0.00%	\$0	\$0	0.00%	\$0	\$0	0.00%
CO	\$0	\$0	0.00%	\$7,128,327	\$28,666	0.40%	\$7,128,327	\$28,666	0.40%
Total	\$981,489,860	\$111,980,048	11.41%	\$105,988,049	\$19,219,727	18.13%	\$1,087,477,908	\$131,199,776	12.06%

* Includes contracts with a submitted Commitment in the EOC System.

Florida Department of Transportation
 Executive Board Report
 Disadvantaged Business Enterprise Anticipated Participation
 For Reporting Period: 10/1/2023 to 2/29/2024
 State Funded Dollars
 By District and Type of Work

	* Construction / Maintenance			Professional Services			Total		
District	Amount	DBE Dollars	DBE %	Amount	DBE Dollars	DBE %	Amount	DBE Dollars	DBE %
01	\$59,809,806	\$7,111,488	11.89%	\$45,747,903	\$12,001,807	26.23%	\$105,557,709	\$19,113,295	18.11%
02	\$86,598,197	\$3,801,323	4.39%	\$56,860,850	\$4,594,460	8.08%	\$143,459,047	\$8,395,783	5.85%
03	\$82,715,473	\$9,061,877	10.96%	\$35,034,640	\$6,708,106	19.15%	\$117,750,114	\$15,769,983	13.39%
04	\$42,102,390	\$10,793,287	25.64%	\$44,787,763	\$12,565,789	28.06%	\$86,890,153	\$23,359,076	26.88%
05	\$58,768,162	\$4,664,460	7.94%	\$72,094,560	\$11,991,887	16.63%	\$130,862,722	\$16,656,348	12.73%
06	\$20,114,909	\$4,079,613	20.28%	\$76,611,477	\$5,236,509	6.84%	\$96,726,386	\$9,316,122	9.63%
07	\$80,535,269	\$8,686,114	10.79%	\$41,505,150	\$9,179,309	22.12%	\$122,040,420	\$17,865,423	14.64%
08	\$76,840,537	\$16,411,530	21.36%	\$101,126,332	\$15,901,322	15.72%	\$177,966,869	\$32,312,852	18.16%
CO	\$0	\$0	0.00%	\$22,017,446	\$1,120,168	5.09%	\$22,017,446	\$1,120,168	5.09%
Total	\$507,484,743	\$64,609,692	12.73%	\$495,786,121	\$79,299,357	15.99%	\$1,003,270,866	\$143,909,050	14.34%

* Includes contracts with a submitted Commitment in the EOC System.

Florida Department of Transportation
 Executive Board Report
 Disadvantaged Business Enterprise Anticipated Participation
 For Reporting Period: 10/1/2023 to 2/29/2024
 Federal and State Funded Dollars
 By District and Type of Work

	* Construction / Maintenance			Professional Services			Total		
District	Amount	DBE Dollars	DBE %	Amount	DBE Dollars	DBE %	Amount	DBE Dollars	DBE %
01	\$207,711,289	\$17,349,793	8.35%	\$59,843,812	\$15,597,605	26.06%	\$267,555,101	\$32,947,399	12.31%
02	\$191,136,579	\$10,546,080	5.52%	\$73,193,030	\$7,592,691	10.37%	\$264,329,609	\$18,138,771	6.86%
03	\$194,896,147	\$19,015,890	9.76%	\$50,104,307	\$11,095,162	22.14%	\$245,000,454	\$30,111,052	12.29%
04	\$86,455,777	\$40,589,530	46.95%	\$47,903,412	\$15,182,117	31.69%	\$134,359,189	\$55,771,647	41.51%
05	\$219,029,149	\$22,398,929	10.23%	\$103,277,608	\$16,245,208	15.73%	\$322,306,757	\$38,644,137	11.99%
06	\$95,718,566	\$22,911,282	23.94%	\$85,281,587	\$5,421,718	6.36%	\$181,000,153	\$28,333,001	15.65%
07	\$417,186,559	\$27,366,707	6.56%	\$51,898,310	\$10,334,426	19.91%	\$469,084,869	\$37,701,134	8.04%
08	\$76,840,537	\$16,411,530	21.36%	\$101,126,332	\$15,901,322	15.72%	\$177,966,869	\$32,312,852	18.16%
CO	\$0	\$0	0.00%	\$29,145,773	\$1,148,834	3.94%	\$29,145,773	\$1,148,834	3.94%
Total	\$1,488,974,603	\$176,589,741	11.86%	\$601,774,171	\$98,519,083	16.37%	\$2,090,748,774	\$275,108,826	13.16%

* Includes contracts with a submitted Commitment in the EOC System.