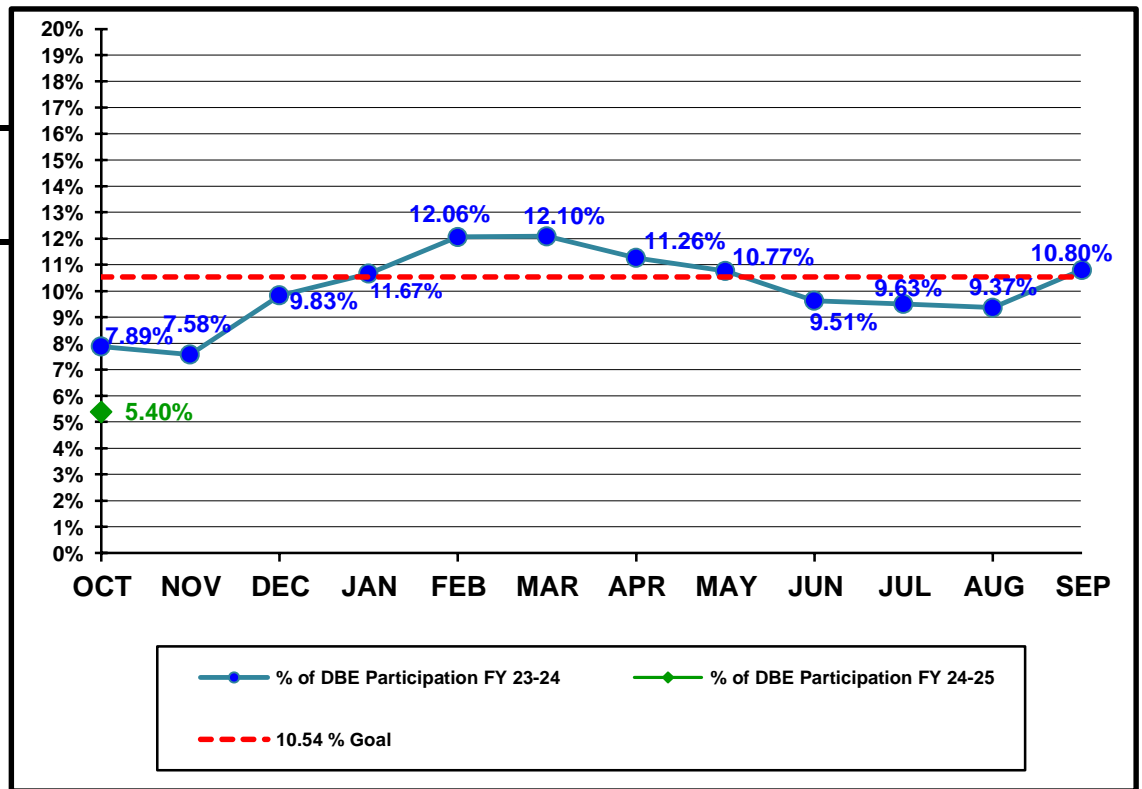


**Florida Department of Transportation  
Disadvantaged Business Enterprises Anticipated Participation  
FEDERAL FUNDED PROJECTS  
As of 10/31/2024**

**YTD COMPARISON BETWEEN FY 23-24 AND FY 24-25**

	Contract \$ with DBEs Reported FY 23-24	DBE Participation \$ FY 23-24	Contract \$ with DBEs Reported FY 23-24	DBE Participation \$ FY 23-24
OCT	\$241,506,937	\$19,055,901	\$649,115,013	\$35,027,821
NOV	\$311,838,560	\$23,632,413		
DEC	\$503,257,921	\$49,475,456		
JAN	\$942,690,577	\$100,583,789		
FEB	\$1,087,477,908	\$131,199,776		
MAR	\$1,200,328,326	\$145,180,297		
APR	\$1,419,346,192	\$159,813,459		
MAY	\$1,680,646,734	\$180,958,151		
JUN	\$2,189,957,702	\$210,896,621		
JUL	\$2,596,412,966	\$246,858,655		
AUG	\$2,829,242,524	\$265,033,562		
SEP	\$3,089,026,621	\$333,642,785		



Florida Department of Transportation  
 Executive Board Report  
 Disadvantaged Business Enterprise Anticipated Participation  
 For Reporting Period: 10/1/2024 to 10/31/2024  
 Federal Funded Dollars  
 By District and Type of Work

	* Construction / Maintenance			Professional Services			Total		
District	Amount	DBE Dollars	DBE %	Amount	DBE Dollars	DBE %	Amount	DBE Dollars	DBE %
01	\$105,180,626	\$1,247,031	1.19%	\$1,966,855	\$855,075	43.47%	\$107,147,481	\$2,102,105	1.96%
02	\$112,137,380	\$1,811,870	1.62%	\$9,625,643	\$1,446,371	15.03%	\$121,763,023	\$3,258,241	2.68%
03	\$64,370,923	\$1,621,835	2.52%	\$2,769,612	\$356,398	12.87%	\$67,140,535	\$1,978,233	2.95%
04	\$27,021,317	\$10,526,345	38.96%	\$870,498	\$125,346	14.40%	\$27,891,815	\$10,651,691	38.19%
05	\$278,930,211	\$10,102,003	3.62%	\$1,943,606	\$164,592	8.47%	\$280,873,817	\$10,266,595	3.66%
06	\$13,069,027	\$5,912,011	45.24%	\$750,126	\$140,914	18.79%	\$13,819,152	\$6,052,925	43.80%
07	\$24,560,735	(\$805,734)	< 0%	\$3,689,698	\$1,523,764	41.30%	\$28,250,433	\$718,030	2.54%
08	\$0	\$0	0.00%	\$0	\$0	0.00%	\$0	\$0	0.00%
CO	\$0	\$0	0.00%	\$2,228,755	\$0	0.00%	\$2,228,755	\$0	0.00%
<b>Total</b>	<b>\$625,270,219</b>	<b>\$30,415,361</b>	<b>4.86%</b>	<b>\$23,844,793</b>	<b>\$4,612,460</b>	<b>19.34%</b>	<b>\$649,115,013</b>	<b>\$35,027,821</b>	<b>5.40%</b>

\* Includes contracts with a submitted Commitment in the EOC System.

Florida Department of Transportation  
 Executive Board Report  
 Disadvantaged Business Enterprise Anticipated Participation  
 For Reporting Period: 10/1/2024 to 10/31/2024  
 State Funded Dollars  
 By District and Type of Work

	* Construction / Maintenance			Professional Services			Total		
District	Amount	DBE Dollars	DBE %	Amount	DBE Dollars	DBE %	Amount	DBE Dollars	DBE %
01	\$25,742,907	(\$354,301)	< 0%	\$8,850,280	\$920,404	10.40%	\$34,593,187	\$566,102	1.64%
02	(\$8,159,154)	\$649,658	> 100%	\$30,210,103	\$1,032,471	3.42%	\$22,050,949	\$1,682,130	7.63%
03	\$25,593,604	\$2,817,342	11.01%	\$10,641,561	\$2,426,506	22.80%	\$36,235,166	\$5,243,848	14.47%
04	\$10,481,864	\$4,922,216	46.96%	\$5,902,645	\$1,697,915	28.77%	\$16,384,508	\$6,620,131	40.40%
05	\$90,903,886	\$3,207,198	3.53%	\$14,729,705	\$270,716	1.84%	\$105,633,591	\$3,477,914	3.29%
06	(\$573,785)	\$0	0.00%	\$10,761,110	\$1,397,569	12.99%	\$10,187,325	\$1,397,569	13.72%
07	\$28,355,591	\$0	0.00%	\$18,191,561	\$3,165,587	17.40%	\$46,547,152	\$3,165,587	6.80%
08	\$467,535,575	\$9,442,508	2.02%	\$17,242,408	\$5,279,298	30.62%	\$484,777,983	\$14,721,806	3.04%
CO	\$0	\$0	0.00%	\$9,111,526	\$31,132	0.34%	\$9,111,526	\$31,132	0.34%
<b>Total</b>	<b>\$639,880,488</b>	<b>\$20,684,621</b>	<b>3.23%</b>	<b>\$125,640,899</b>	<b>\$16,221,598</b>	<b>12.91%</b>	<b>\$765,521,386</b>	<b>\$36,906,220</b>	<b>4.82%</b>

\* Includes contracts with a submitted Commitment in the EOC System.

Florida Department of Transportation  
 Executive Board Report  
 Disadvantaged Business Enterprise Anticipated Participation  
 For Reporting Period: 10/1/2024 to 10/31/2024  
 Federal and State Funded Dollars  
 By District and Type of Work

	* Construction / Maintenance			Professional Services			Total		
District	Amount	DBE Dollars	DBE %	Amount	DBE Dollars	DBE %	Amount	DBE Dollars	DBE %
01	\$130,923,532	\$892,729	0.68%	\$10,817,136	\$1,775,479	16.41%	\$141,740,668	\$2,668,208	1.88%
02	\$103,978,226	\$2,461,528	2.37%	\$39,835,746	\$2,478,842	6.22%	\$143,813,972	\$4,940,371	3.44%
03	\$89,964,528	\$4,439,177	4.93%	\$13,411,173	\$2,782,905	20.75%	\$103,375,701	\$7,222,082	6.99%
04	\$37,503,181	\$15,448,561	41.19%	\$6,773,143	\$1,823,261	26.92%	\$44,276,323	\$17,271,823	39.01%
05	\$369,834,097	\$13,309,201	3.60%	\$16,673,311	\$435,308	2.61%	\$386,507,408	\$13,744,509	3.56%
06	\$12,495,241	\$5,912,011	47.31%	\$11,511,236	\$1,538,483	13.37%	\$24,006,477	\$7,450,494	31.04%
07	\$52,916,326	(\$805,734)	< 0%	\$21,881,259	\$4,689,351	21.43%	\$74,797,585	\$3,883,617	5.19%
08	\$467,535,575	\$9,442,508	2.02%	\$17,242,408	\$5,279,298	30.62%	\$484,777,983	\$14,721,806	3.04%
CO	\$0	\$0	0.00%	\$11,340,282	\$31,132	0.27%	\$11,340,282	\$31,132	0.27%
<b>Total</b>	<b>\$1,265,150,706</b>	<b>\$51,099,981</b>	<b>4.04%</b>	<b>\$149,485,694</b>	<b>\$20,834,059</b>	<b>13.94%</b>	<b>\$1,414,636,398</b>	<b>\$71,934,041</b>	<b>5.08%</b>

\* Includes contracts with a submitted Commitment in the EOC System.