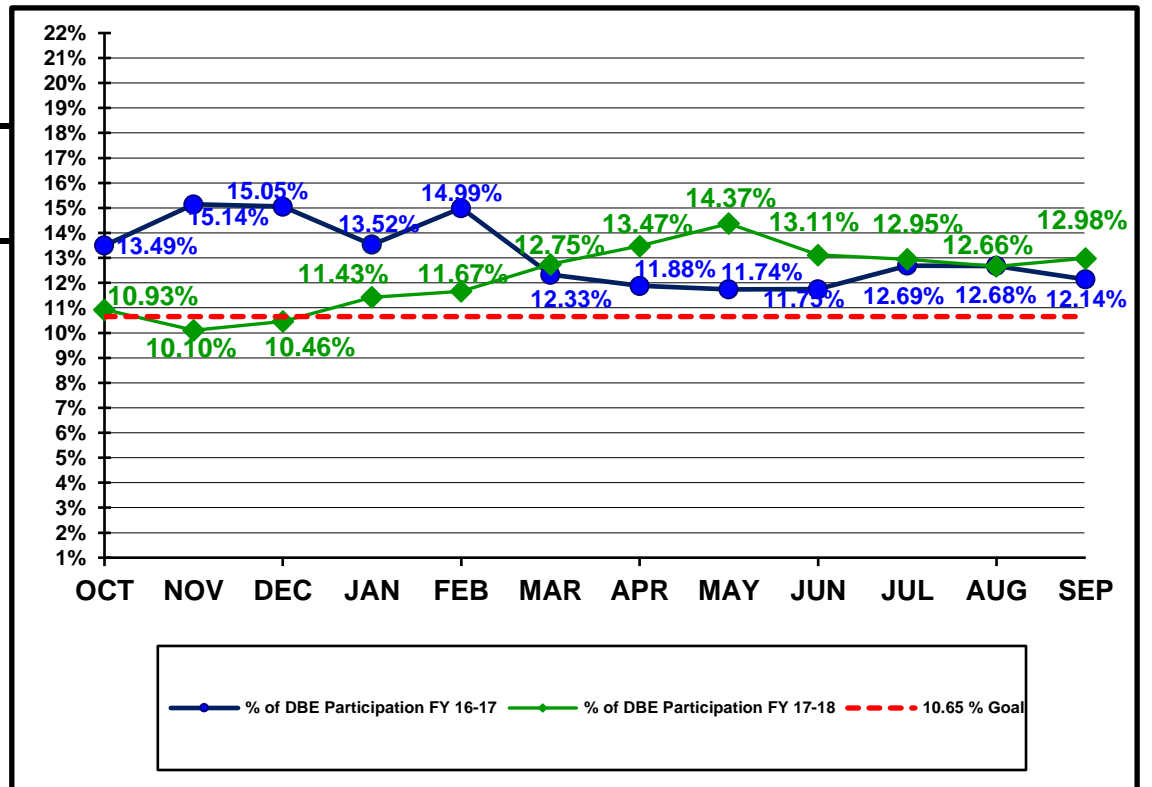


**Florida Department of Transportation  
Disadvantaged Business Enterprises Anticipated Participation  
FEDERAL FUNDED PROJECTS  
As of 09/30/2018**

**YTD COMPARISON BETWEEN FY 16-17 AND FY 17-18**

	Contract \$ with DBEs Reported FY 16-17	DBE Participation \$ FY 16-17	Contract \$ with DBEs Reported FY 17-18	DBE Participation \$ FY 17-18
OCT	\$497,825,101	\$67,177,867	\$737,574,132	\$80,581,654
NOV	\$616,343,373	\$93,345,157	\$909,489,879	\$91,893,272
DEC	\$649,135,466	\$97,702,885	\$1,037,698,596	\$108,523,690
JAN	\$818,882,860	\$110,747,430	\$1,091,839,289	\$124,791,373
FEB	\$921,877,916	\$138,234,707	\$1,217,218,108	\$142,007,483
MAR	\$1,498,615,302	\$184,721,859	\$1,381,024,029	\$176,034,516
APR	\$1,683,534,122	\$200,022,149	\$1,562,450,903	\$210,512,919
MAY	\$1,756,148,678	\$206,147,536	\$1,704,614,109	\$244,976,561
JUN	\$1,983,056,295	\$232,942,006	\$2,011,689,651	\$263,828,963
JUL	\$2,095,431,689	\$265,871,354	\$2,129,061,171	\$275,622,845
AUG	\$2,231,693,686	\$282,912,321	\$2,471,230,984	\$312,833,817
SEP	\$2,476,519,153	\$300,621,154	\$2,577,334,388	\$334,618,272



Florida Department of Transportation  
 Executive Board Report  
 Disadvantaged Business Enterprise Anticipated Participation  
 For Reporting Period: 10/1/2017 to 9/30/2018  
 Federal Funded Dollars  
 By District and Type of Work

District	* Construction / Maintenance			Professional Services			Total		
	Amount	DBE Dollars	DBE %	Amount	DBE Dollars	DBE %	Amount	DBE Dollars	DBE %
01	\$114,215,210	\$12,521,600	10.96%	\$26,969,880	\$6,142,233	22.77%	\$141,185,091	\$18,663,833	13.22%
02	\$167,921,780	\$21,700,127	12.92%	\$26,531,097	\$4,384,104	16.52%	\$194,452,877	\$26,084,230	13.41%
03	\$359,959,292	\$41,559,530	11.55%	\$75,067,210	\$11,496,825	15.32%	\$435,026,502	\$53,056,355	12.20%
04	\$477,700,939	\$61,457,501	12.87%	\$57,840,787	\$13,241,190	22.89%	\$535,541,726	\$74,698,692	13.95%
05	\$760,542,598	\$77,704,187	10.22%	\$51,671,406	\$7,906,001	15.30%	\$812,214,003	\$85,610,189	10.54%
06	\$117,749,840	\$34,671,368	29.44%	\$33,257,584	\$3,358,175	10.10%	\$151,007,424	\$38,029,543	25.18%
07	\$299,204,149	\$37,083,274	12.39%	\$6,111,817	\$794,632	13.00%	\$305,315,966	\$37,877,906	12.41%
08	\$303,771	\$0	0.00%	\$0	\$0	0.00%	\$303,771	\$0	0.00%
CO	\$0	\$0	0.00%	\$2,287,026	\$585,784	25.61%	\$2,287,026	\$585,784	25.61%
<b>Total</b>	<b>\$2,297,597,579</b>	<b>\$286,697,587</b>	<b>12.48%</b>	<b>\$279,736,807</b>	<b>\$47,908,944</b>	<b>17.13%</b>	<b>\$2,577,334,388</b>	<b>\$334,606,532</b>	<b>12.98%</b>

\* Includes contracts with a submitted Commitment in the EOC System.

Florida Department of Transportation  
 Executive Board Report  
 Disadvantaged Business Enterprise Anticipated Participation  
 For Reporting Period: 10/1/2017 to 9/30/2018  
 State Funded Dollars  
 By District and Type of Work

	* Construction / Maintenance			Professional Services			Total		
District	Amount	DBE Dollars	DBE %	Amount	DBE Dollars	DBE %	Amount	DBE Dollars	DBE %
01	\$162,507,399	\$9,186,904	5.65%	\$99,856,198	\$21,902,394	21.93%	\$262,363,597	\$31,089,298	11.85%
02	\$182,908,884	\$4,626,280	2.53%	\$109,481,261	\$20,742,538	18.95%	\$292,390,145	\$25,368,818	8.68%
03	\$108,184,032	\$9,397,581	8.69%	\$74,162,360	\$7,372,928	9.94%	\$182,346,392	\$16,770,508	9.20%
04	\$109,455,099	\$20,410,446	18.65%	\$90,813,861	\$14,771,688	16.27%	\$200,268,960	\$35,182,134	17.57%
05	\$78,033,362	\$4,982,151	6.38%	\$143,247,399	\$24,896,876	17.38%	\$221,280,761	\$29,879,027	13.50%
06	\$99,797,190	\$20,373,802	20.42%	\$123,058,491	\$18,738,035	15.23%	\$222,855,681	\$39,111,837	17.55%
07	\$71,791,868	\$6,515,435	9.08%	\$117,941,168	\$13,962,142	11.84%	\$189,733,036	\$20,477,577	10.79%
08	\$395,316,368	\$36,877,707	9.33%	\$221,020,438	\$40,844,307	18.48%	\$616,336,806	\$77,722,013	12.61%
CO	\$0	\$0	0.00%	\$52,477,715	\$2,505,910	4.78%	\$52,477,715	\$2,505,910	4.78%
<b>Total</b>	<b>\$1,207,994,202</b>	<b>\$112,370,306</b>	<b>9.30%</b>	<b>\$1,032,058,891</b>	<b>\$165,736,818</b>	<b>16.06%</b>	<b>\$2,240,053,094</b>	<b>\$278,107,121</b>	<b>12.42%</b>

\* Includes contracts with a submitted Commitment in the EOC System.

Florida Department of Transportation  
 Executive Board Report  
 Disadvantaged Business Enterprise Anticipated Participation  
 For Reporting Period: 10/1/2017 to 9/30/2018  
 Federal and State Funded Dollars  
 By District and Type of Work

	* Construction / Maintenance			Professional Services			Total		
District	Amount	DBE Dollars	DBE %	Amount	DBE Dollars	DBE %	Amount	DBE Dollars	DBE %
01	\$276,722,609	\$21,708,504	7.84%	\$126,826,078	\$28,044,627	22.11%	\$403,548,687	\$49,753,130	12.33%
02	\$350,830,664	\$26,326,407	7.50%	\$136,012,358	\$25,126,642	18.47%	\$486,843,022	\$51,453,048	10.57%
03	\$468,143,324	\$50,957,111	10.88%	\$149,229,571	\$18,869,753	12.64%	\$617,372,894	\$69,826,863	11.31%
04	\$587,156,038	\$81,867,947	13.94%	\$148,654,649	\$28,012,878	18.84%	\$735,810,687	\$109,880,825	14.93%
05	\$838,575,960	\$82,686,338	9.86%	\$194,918,804	\$32,802,877	16.83%	\$1,033,494,765	\$115,489,215	11.17%
06	\$217,547,030	\$55,045,171	25.30%	\$156,316,076	\$22,096,210	14.14%	\$373,863,106	\$77,141,380	20.63%
07	\$370,996,017	\$43,598,710	11.75%	\$124,052,985	\$14,756,773	11.90%	\$495,049,002	\$58,355,483	11.79%
08	\$395,620,139	\$36,877,707	9.32%	\$221,020,438	\$40,844,307	18.48%	\$616,640,577	\$77,722,013	12.60%
CO	\$0	\$0	0.00%	\$54,764,742	\$3,091,694	5.65%	\$54,764,742	\$3,091,694	5.65%
<b>Total</b>	<b>\$3,505,591,781</b>	<b>\$399,067,895</b>	<b>11.38%</b>	<b>\$1,311,795,701</b>	<b>\$213,645,761</b>	<b>16.29%</b>	<b>\$4,817,387,481</b>	<b>\$612,713,653</b>	<b>12.72%</b>

\* Includes contracts with a submitted Commitment in the EOC System.