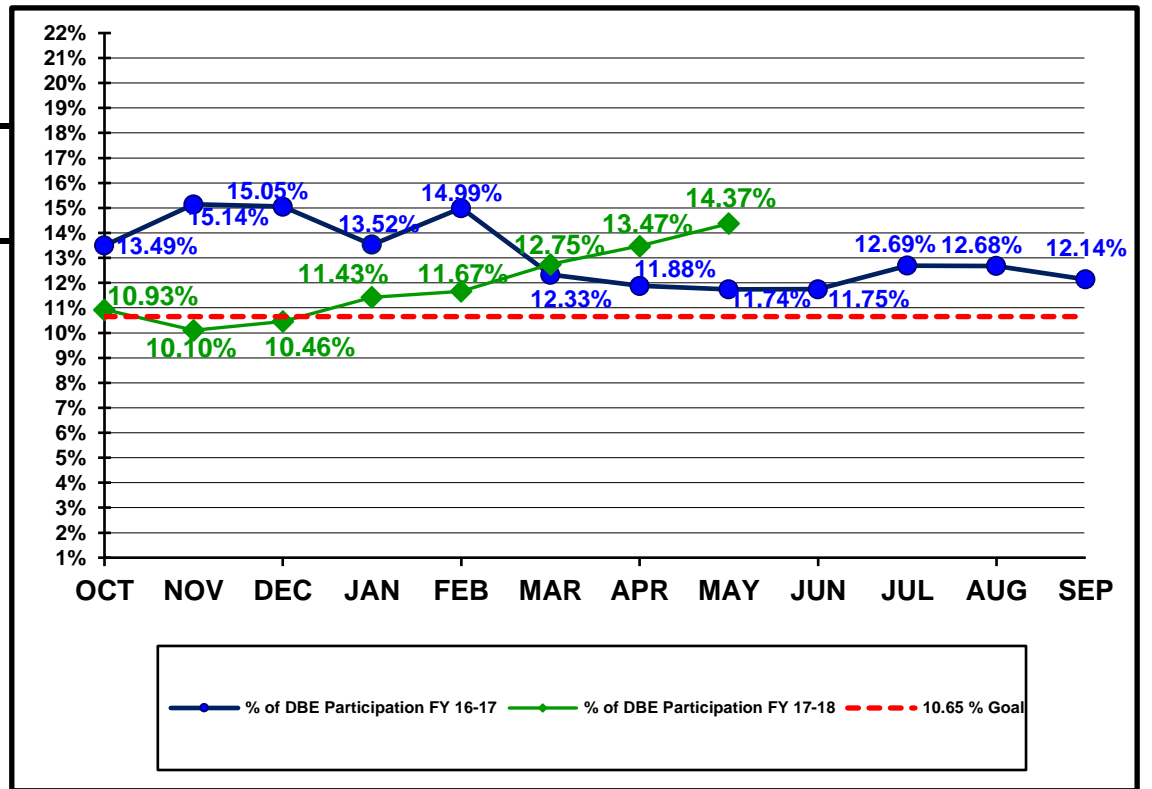


**Florida Department of Transportation
Disadvantaged Business Enterprises Anticipated Participation
FEDERAL FUNDED PROJECTS
As of 05/31/2018**

YTD COMPARISON BETWEEN FY 16-17 AND FY 17-18

	Contract \$ with DBEs Reported FY 16-17	DBE Participation \$ FY 16-17	Contract \$ with DBEs Reported FY 17-18	DBE Participation \$ FY 17-18
OCT	\$497,825,101	\$67,177,867	\$737,574,132	\$80,581,654
NOV	\$616,343,373	\$93,345,157	\$909,489,879	\$91,893,272
DEC	\$649,135,466	\$97,702,885	\$1,037,698,596	\$108,523,690
JAN	\$818,882,860	\$110,747,430	\$1,091,839,289	\$124,791,373
FEB	\$921,877,916	\$138,234,707	\$1,217,218,108	\$142,007,483
MAR	\$1,498,615,302	\$184,721,859	\$1,381,024,029	\$176,034,516
APR	\$1,683,534,122	\$200,022,149	\$1,562,450,903	\$210,512,919
MAY	\$1,756,148,678	\$206,147,536	\$1,704,614,109	\$244,976,561
JUN	\$1,983,056,295	\$232,942,006		
JUL	\$2,095,431,689	\$265,871,354		
AUG	\$2,231,693,686	\$282,912,321		
SEP	\$2,476,519,153	\$300,621,154		



Florida Department of Transportation
 Executive Board Report
 Disadvantaged Business Enterprise Anticipated Participation
 For Reporting Period: 10/1/2017 to 5/31/2018
 Federal Funded Dollars
 By District and Type of Work

	* Construction / Maintenance			Professional Services			Total		
District	Amount	DBE Dollars	DBE %	Amount	DBE Dollars	DBE %	Amount	DBE Dollars	DBE %
01	\$87,380,730	\$8,141,866	9.32%	\$9,208,249	\$571,654	6.21%	\$96,588,979	\$8,713,520	9.02%
02	\$158,939,318	\$21,692,962	13.65%	\$18,390,636	\$2,910,521	15.83%	\$177,329,954	\$24,603,483	13.87%
03	\$283,862,472	\$34,566,390	12.18%	\$40,680,287	\$5,296,545	13.02%	\$324,542,759	\$39,862,935	12.28%
04	\$195,448,850	\$38,469,510	19.68%	\$41,551,867	\$10,262,624	24.70%	\$237,000,718	\$48,732,135	20.56%
05	\$596,633,888	\$61,497,669	10.31%	\$27,393,728	\$4,859,409	17.74%	\$624,027,617	\$66,357,078	10.63%
06	\$39,121,946	\$18,610,270	47.57%	\$24,724,314	\$2,947,849	11.92%	\$63,846,261	\$21,558,119	33.77%
07	\$176,414,508	\$34,860,768	19.76%	\$3,484,665	\$159,762	4.58%	\$179,899,173	\$35,020,530	19.47%
08	\$239,005	\$0	0.00%	\$0	\$0	0.00%	\$239,005	\$0	0.00%
CO	\$0	\$0	0.00%	\$1,139,644	\$128,762	11.30%	\$1,139,644	\$128,762	11.30%
Total	\$1,538,040,717	\$217,839,435	14.16%	\$166,573,390	\$27,137,126	16.29%	\$1,704,614,109	\$244,976,561	14.37%

* Includes contracts with a submitted Commitment in the EOC System.

Florida Department of Transportation
 Executive Board Report
 Disadvantaged Business Enterprise Anticipated Participation
 For Reporting Period: 10/1/2017 to 5/31/2018
 State Funded Dollars
 By District and Type of Work

	* Construction / Maintenance			Professional Services			Total		
District	Amount	DBE Dollars	DBE %	Amount	DBE Dollars	DBE %	Amount	DBE Dollars	DBE %
01	\$118,465,833	\$3,944,278	3.33%	\$53,561,179	\$11,482,750	21.44%	\$172,027,012	\$15,427,029	8.97%
02	\$89,759,626	\$3,796,814	4.23%	\$73,308,493	\$12,825,223	17.49%	\$163,068,119	\$16,622,038	10.19%
03	\$48,027,700	\$3,655,649	7.61%	\$41,423,277	\$3,561,106	8.60%	\$89,450,977	\$7,216,754	8.07%
04	\$44,042,555	\$14,307,659	32.49%	\$60,305,327	\$9,575,645	15.88%	\$104,347,882	\$23,883,304	22.89%
05	\$61,642,093	\$3,180,012	5.16%	\$84,109,740	\$13,513,509	16.07%	\$145,751,833	\$16,693,522	11.45%
06	\$65,595,502	\$7,005,083	10.68%	\$79,052,046	\$11,017,520	13.94%	\$144,647,549	\$18,022,604	12.46%
07	\$49,678,382	\$3,298,109	6.64%	\$67,031,894	\$5,949,182	8.88%	\$116,710,276	\$9,247,291	7.92%
08	\$285,630,556	\$19,743,067	6.91%	\$145,332,062	\$23,655,858	16.28%	\$430,962,618	\$43,398,925	10.07%
CO	\$0	\$0	0.00%	\$33,141,310	\$1,053,747	3.18%	\$33,141,310	\$1,053,747	3.18%
Total	\$762,842,247	\$58,930,671	7.73%	\$637,265,328	\$92,634,540	14.54%	\$1,400,107,576	\$151,565,212	10.83%

* Includes contracts with a submitted Commitment in the EOC System.

Florida Department of Transportation
 Executive Board Report
 Disadvantaged Business Enterprise Anticipated Participation
 For Reporting Period: 10/1/2017 to 5/31/2018
 Federal and State Funded Dollars
 By District and Type of Work

	* Construction / Maintenance			Professional Services			Total		
District	Amount	DBE Dollars	DBE %	Amount	DBE Dollars	DBE %	Amount	DBE Dollars	DBE %
01	\$205,846,563	\$12,086,144	5.87%	\$62,769,428	\$12,054,405	19.20%	\$268,615,991	\$24,140,548	8.99%
02	\$248,698,944	\$25,489,777	10.25%	\$91,699,129	\$15,735,744	17.16%	\$340,398,073	\$41,225,521	12.11%
03	\$331,890,172	\$38,222,039	11.52%	\$82,103,564	\$8,857,651	10.79%	\$413,993,736	\$47,079,690	11.37%
04	\$239,491,406	\$52,777,169	22.04%	\$101,857,194	\$19,838,269	19.48%	\$341,348,600	\$72,615,439	21.27%
05	\$658,275,981	\$64,677,681	9.83%	\$111,503,469	\$18,372,918	16.48%	\$769,779,450	\$83,050,599	10.79%
06	\$104,717,449	\$25,615,353	24.46%	\$103,776,360	\$13,965,369	13.46%	\$208,493,809	\$39,580,722	18.98%
07	\$226,092,890	\$38,158,877	16.88%	\$70,516,559	\$6,108,944	8.66%	\$296,609,449	\$44,267,821	14.92%
08	\$285,869,561	\$19,743,067	6.91%	\$145,332,062	\$23,655,858	16.28%	\$431,201,623	\$43,398,925	10.06%
CO	\$0	\$0	0.00%	\$34,280,954	\$1,182,508	3.45%	\$34,280,954	\$1,182,508	3.45%
Total	\$2,300,882,966	\$276,770,107	12.03%	\$803,838,719	\$119,771,666	14.90%	\$3,104,721,685	\$396,541,773	12.77%

* Includes contracts with a submitted Commitment in the EOC System.