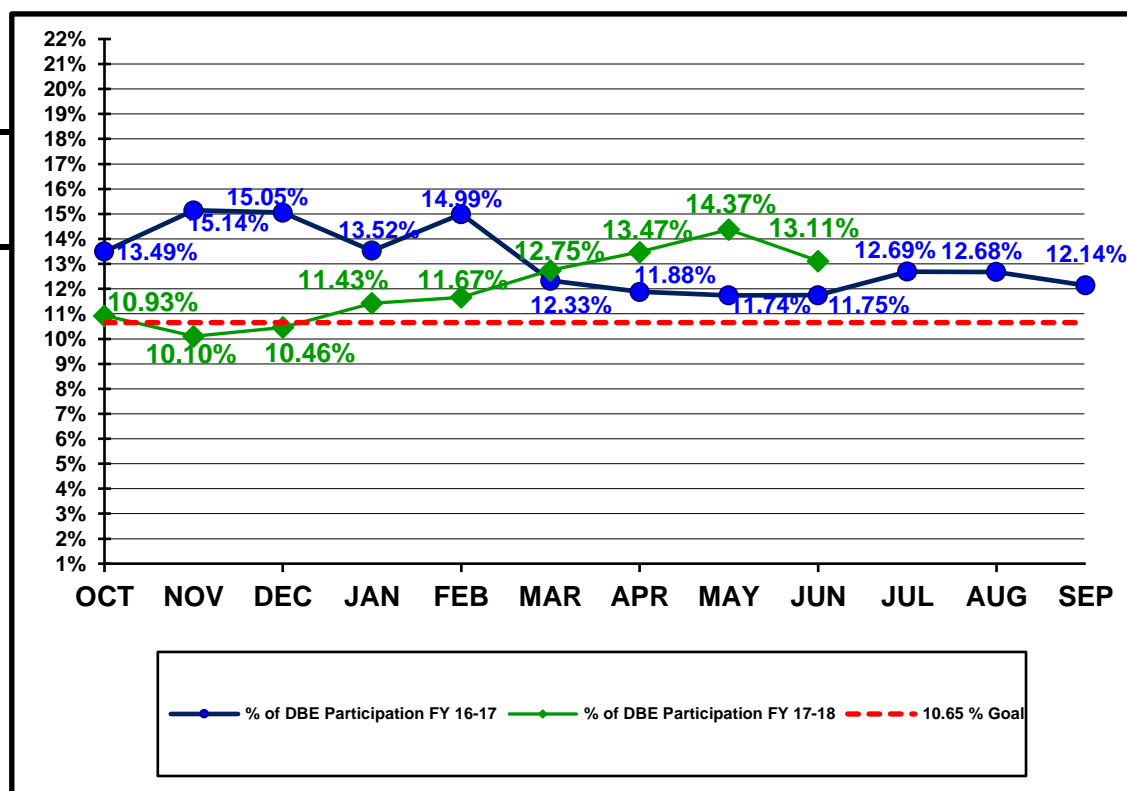


**Florida Department of Transportation
Disadvantaged Business Enterprises Anticipated Participation
FEDERAL FUNDED PROJECTS
As of 06/30/2018**

YTD COMPARISON BETWEEN FY 16-17 AND FY 17-18

	Contract \$ with DBEs Reported FY 16-17	DBE Participation \$ FY 16-17	Contract \$ with DBEs Reported FY 17-18	DBE Participation \$ FY 17-18
OCT	\$497,825,101	\$67,177,867	\$737,574,132	\$80,581,654
NOV	\$616,343,373	\$93,345,157	\$909,489,879	\$91,893,272
DEC	\$649,135,466	\$97,702,885	\$1,037,698,596	\$108,523,690
JAN	\$818,882,860	\$110,747,430	\$1,091,839,289	\$124,791,373
FEB	\$921,877,916	\$138,234,707	\$1,217,218,108	\$142,007,483
MAR	\$1,498,615,302	\$184,721,859	\$1,381,024,029	\$176,034,516
APR	\$1,683,534,122	\$200,022,149	\$1,562,450,903	\$210,512,919
MAY	\$1,756,148,678	\$206,147,536	\$1,704,614,109	\$244,976,561
JUN	\$1,983,056,295	\$232,942,006	\$2,011,689,651	\$263,828,963
JUL	\$2,095,431,689	\$265,871,354		
AUG	\$2,231,693,686	\$282,912,321		
SEP	\$2,476,519,153	\$300,621,154		



Florida Department of Transportation
 Executive Board Report
 Disadvantaged Business Enterprise Anticipated Participation
 For Reporting Period: 10/1/2017 to 6/30/2018
 Federal Funded Dollars
 By District and Type of Work

	* Construction / Maintenance			Professional Services			Total		
District	Amount	DBE Dollars	DBE %	Amount	DBE Dollars	DBE %	Amount	DBE Dollars	DBE %
01	\$100,019,187	\$8,451,490	8.45%	\$13,808,784	\$1,968,358	14.25%	\$113,827,971	\$10,419,848	9.15%
02	\$166,110,713	\$21,692,962	13.06%	\$22,922,529	\$3,688,523	16.09%	\$189,033,243	\$25,381,485	13.43%
03	\$287,914,560	\$34,566,390	12.01%	\$44,783,125	\$5,717,173	12.77%	\$332,697,685	\$40,283,564	12.11%
04	\$424,747,980	\$49,271,769	11.60%	\$50,503,969	\$11,492,011	22.75%	\$475,251,950	\$60,763,781	12.79%
05	\$604,991,259	\$62,594,274	10.35%	\$31,043,886	\$5,622,256	18.11%	\$636,035,146	\$68,216,530	10.73%
06	\$45,494,743	\$20,171,446	44.34%	\$31,694,200	\$3,082,696	9.73%	\$77,188,943	\$23,254,143	30.13%
07	\$181,676,913	\$34,983,668	19.26%	\$4,415,615	\$352,058	7.97%	\$186,092,528	\$35,335,726	18.99%
08	\$303,771	\$0	0.00%	\$0	\$0	0.00%	\$303,771	\$0	0.00%
CO	\$0	\$0	0.00%	\$1,258,415	\$173,886	13.82%	\$1,258,415	\$173,886	13.82%
Total	\$1,811,259,126	\$231,731,999	12.79%	\$200,430,523	\$32,096,961	16.01%	\$2,011,689,651	\$263,828,963	13.11%

* Includes contracts with a submitted Commitment in the EOC System.

Florida Department of Transportation
 Executive Board Report
 Disadvantaged Business Enterprise Anticipated Participation
 For Reporting Period: 10/1/2017 to 6/30/2018
 State Funded Dollars
 By District and Type of Work

	* Construction / Maintenance			Professional Services			Total		
District	Amount	DBE Dollars	DBE %	Amount	DBE Dollars	DBE %	Amount	DBE Dollars	DBE %
01	\$121,493,208	\$5,181,253	4.26%	\$62,559,443	\$12,511,077	20.00%	\$184,052,651	\$17,692,330	9.61%
02	\$90,617,378	\$3,796,814	4.19%	\$85,361,520	\$14,705,470	17.23%	\$175,978,899	\$18,502,284	10.51%
03	\$48,546,424	\$3,655,649	7.53%	\$48,211,884	\$4,997,318	10.37%	\$96,758,308	\$8,652,967	8.94%
04	\$104,309,913	\$17,642,182	16.91%	\$65,603,249	\$10,987,741	16.75%	\$169,913,162	\$28,629,923	16.85%
05	\$68,049,972	\$2,809,022	4.13%	\$108,418,534	\$17,864,703	16.48%	\$176,468,505	\$20,673,726	11.72%
06	\$89,748,390	\$11,901,094	13.26%	\$84,953,906	\$11,939,372	14.05%	\$174,702,297	\$23,840,466	13.65%
07	\$62,611,548	\$4,963,517	7.93%	\$79,663,247	\$7,731,393	9.71%	\$142,274,795	\$12,694,910	8.92%
08	\$307,985,575	\$23,690,300	7.69%	\$156,577,992	\$25,708,741	16.42%	\$464,563,566	\$49,399,041	10.63%
CO	\$0	\$0	0.00%	\$37,189,806	\$1,330,859	3.58%	\$37,189,806	\$1,330,859	3.58%
Total	\$893,362,408	\$73,639,831	8.24%	\$728,539,581	\$107,776,674	14.79%	\$1,621,901,989	\$181,416,505	11.19%

* Includes contracts with a submitted Commitment in the EOC System.

Florida Department of Transportation
 Executive Board Report
 Disadvantaged Business Enterprise Anticipated Participation
 For Reporting Period: 10/1/2017 to 6/30/2018
 Federal and State Funded Dollars
 By District and Type of Work

	* Construction / Maintenance			Professional Services			Total		
District	Amount	DBE Dollars	DBE %	Amount	DBE Dollars	DBE %	Amount	DBE Dollars	DBE %
01	\$221,512,395	\$13,632,743	6.15%	\$76,368,227	\$14,479,436	18.96%	\$297,880,622	\$28,112,178	9.44%
02	\$256,728,092	\$25,489,777	9.93%	\$108,284,050	\$18,393,993	16.99%	\$365,012,142	\$43,883,770	12.02%
03	\$336,460,984	\$38,222,039	11.36%	\$92,995,010	\$10,714,491	11.52%	\$429,455,993	\$48,936,530	11.40%
04	\$529,057,894	\$66,913,951	12.65%	\$116,107,218	\$22,479,752	19.36%	\$645,165,112	\$89,393,703	13.86%
05	\$673,041,231	\$65,403,296	9.72%	\$139,462,420	\$23,486,960	16.84%	\$812,503,651	\$88,890,256	10.94%
06	\$135,243,133	\$32,072,540	23.71%	\$116,648,106	\$15,022,068	12.88%	\$251,891,239	\$47,094,608	18.70%
07	\$244,288,461	\$39,947,185	16.35%	\$84,078,862	\$8,083,451	9.61%	\$328,367,323	\$48,030,636	14.63%
08	\$308,289,346	\$23,690,300	7.68%	\$156,577,992	\$25,708,741	16.42%	\$464,867,337	\$49,399,041	10.63%
CO	\$0	\$0	0.00%	\$38,448,221	\$1,504,745	3.91%	\$38,448,221	\$1,504,745	3.91%
Total	\$2,704,621,536	\$305,371,831	11.29%	\$928,970,106	\$139,873,637	15.06%	\$3,633,591,640	\$445,245,467	12.25%

* Includes contracts with a submitted Commitment in the EOC System.