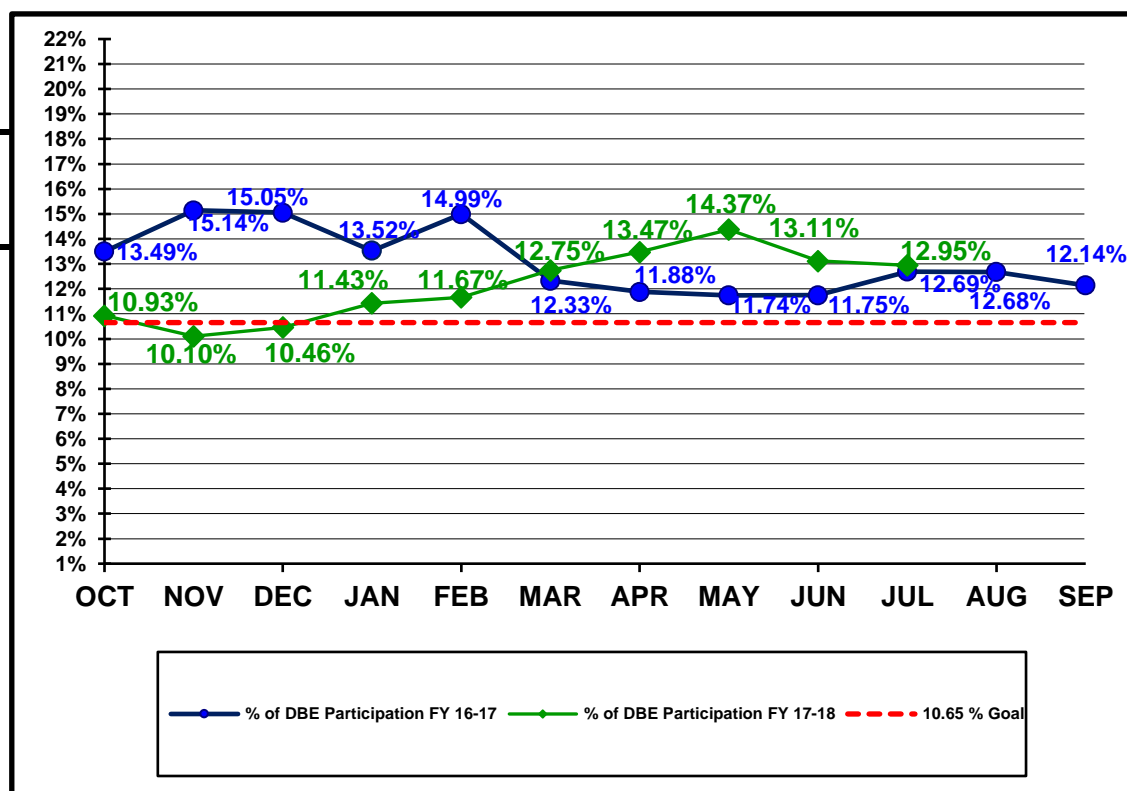


**Florida Department of Transportation
Disadvantaged Business Enterprises Anticipated Participation
FEDERAL FUNDED PROJECTS
As of 07/31/2018**

YTD COMPARISON BETWEEN FY 16-17 AND FY 17-18

	Contract \$ with DBEs Reported FY 16-17	DBE Participation \$ FY 16-17	Contract \$ with DBEs Reported FY 17-18	DBE Participation \$ FY 17-18
OCT	\$497,825,101	\$67,177,867	\$737,574,132	\$80,581,654
NOV	\$616,343,373	\$93,345,157	\$909,489,879	\$91,893,272
DEC	\$649,135,466	\$97,702,885	\$1,037,698,596	\$108,523,690
JAN	\$818,882,860	\$110,747,430	\$1,091,839,289	\$124,791,373
FEB	\$921,877,916	\$138,234,707	\$1,217,218,108	\$142,007,483
MAR	\$1,498,615,302	\$184,721,859	\$1,381,024,029	\$176,034,516
APR	\$1,683,534,122	\$200,022,149	\$1,562,450,903	\$210,512,919
MAY	\$1,756,148,678	\$206,147,536	\$1,704,614,109	\$244,976,561
JUN	\$1,983,056,295	\$232,942,006	\$2,011,689,651	\$263,828,963
JUL	\$2,095,431,689	\$265,871,354	\$2,129,061,171	\$275,622,845
AUG	\$2,231,693,686	\$282,912,321		
SEP	\$2,476,519,153	\$300,621,154		



Florida Department of Transportation
 Executive Board Report
 Disadvantaged Business Enterprise Anticipated Participation
 For Reporting Period: 10/1/2017 to 7/31/2018
 Federal Funded Dollars
 By District and Type of Work

District	* Construction / Maintenance			Professional Services			Total		
	Amount	DBE Dollars	DBE %	Amount	DBE Dollars	DBE %	Amount	DBE Dollars	DBE %
01	\$103,257,544	\$10,344,898	10.02%	\$13,974,215	\$2,082,960	14.91%	\$117,231,759	\$12,427,858	10.60%
02	\$166,393,762	\$21,692,962	13.04%	\$22,945,262	\$3,819,399	16.65%	\$189,339,024	\$25,512,361	13.47%
03	\$316,703,944	\$38,161,252	12.05%	\$49,428,536	\$6,344,064	12.83%	\$366,132,480	\$44,505,316	12.16%
04	\$471,192,641	\$50,206,638	10.66%	\$55,490,144	\$12,075,520	21.76%	\$526,682,785	\$62,282,159	11.83%
05	\$605,746,087	\$62,708,891	10.35%	\$46,276,313	\$6,702,497	14.48%	\$652,022,401	\$69,411,388	10.65%
06	\$48,536,722	\$23,502,633	48.42%	\$31,789,922	\$3,161,584	9.95%	\$80,326,644	\$26,664,218	33.19%
07	\$191,255,321	\$34,009,520	17.78%	\$4,338,977	\$636,140	14.66%	\$195,594,298	\$34,645,660	17.71%
08	\$303,771	\$0	0.00%	\$0	\$0	0.00%	\$303,771	\$0	0.00%
CO	\$0	\$0	0.00%	\$1,428,010	\$173,886	12.18%	\$1,428,010	\$173,886	12.18%
Total	\$1,903,389,792	\$240,626,794	12.64%	\$225,671,379	\$34,996,050	15.51%	\$2,129,061,171	\$275,622,845	12.95%

* Includes contracts with a submitted Commitment in the EOC System.

Florida Department of Transportation
 Executive Board Report
 Disadvantaged Business Enterprise Anticipated Participation
 For Reporting Period: 10/1/2017 to 7/31/2018
 State Funded Dollars
 By District and Type of Work

District	* Construction / Maintenance			Professional Services			Total		
	Amount	DBE Dollars	DBE %	Amount	DBE Dollars	DBE %	Amount	DBE Dollars	DBE %
01	\$133,361,363	\$6,306,453	4.73%	\$68,111,147	\$13,647,066	20.04%	\$201,472,510	\$19,953,519	9.90%
02	\$90,701,063	\$3,796,814	4.19%	\$91,035,221	\$16,621,665	18.26%	\$181,736,284	\$20,418,479	11.24%
03	\$60,399,816	\$7,547,584	12.50%	\$53,491,862	\$5,425,236	10.14%	\$113,891,678	\$12,972,819	11.39%
04	\$106,899,900	\$18,342,247	17.16%	\$73,400,188	\$11,692,837	15.93%	\$180,300,088	\$30,035,084	16.66%
05	\$73,726,146	\$3,545,403	4.81%	\$117,457,606	\$18,519,951	15.77%	\$191,183,752	\$22,065,353	11.54%
06	\$90,520,842	\$12,927,645	14.28%	\$103,294,575	\$12,558,369	12.16%	\$193,815,417	\$25,486,014	13.15%
07	\$61,743,955	\$5,019,492	8.13%	\$87,759,515	\$8,528,001	9.72%	\$149,503,470	\$13,547,493	9.06%
08	\$325,702,049	\$27,296,598	8.38%	\$169,516,075	\$27,165,818	16.03%	\$495,218,124	\$54,462,415	11.00%
CO	\$0	\$0	0.00%	\$41,368,721	\$1,353,871	3.27%	\$41,368,721	\$1,353,871	3.27%
Total	\$943,055,134	\$84,782,236	8.99%	\$805,434,910	\$115,512,814	14.34%	\$1,748,490,046	\$200,295,047	11.46%

* Includes contracts with a submitted Commitment in the EOC System.

Florida Department of Transportation
 Executive Board Report
 Disadvantaged Business Enterprise Anticipated Participation
 For Reporting Period: 10/1/2017 to 7/31/2018
 Federal and State Funded Dollars
 By District and Type of Work

	* Construction / Maintenance			Professional Services			Total		
District	Amount	DBE Dollars	DBE %	Amount	DBE Dollars	DBE %	Amount	DBE Dollars	DBE %
01	\$236,618,907	\$16,651,352	7.04%	\$82,085,362	\$15,730,025	19.16%	\$318,704,269	\$32,381,377	10.16%
02	\$257,094,825	\$25,489,777	9.91%	\$113,980,483	\$20,441,063	17.93%	\$371,075,308	\$45,930,840	12.38%
03	\$377,103,760	\$45,708,835	12.12%	\$102,920,398	\$11,769,300	11.44%	\$480,024,158	\$57,478,136	11.97%
04	\$578,092,542	\$68,548,885	11.86%	\$128,890,331	\$23,768,357	18.44%	\$706,982,873	\$92,317,242	13.06%
05	\$679,472,234	\$66,254,294	9.75%	\$163,733,919	\$25,222,448	15.40%	\$843,206,153	\$91,476,742	10.85%
06	\$139,057,564	\$36,430,278	26.20%	\$135,084,497	\$15,719,953	11.64%	\$274,142,062	\$52,150,231	19.02%
07	\$252,999,276	\$39,029,012	15.43%	\$92,098,493	\$9,164,141	9.95%	\$345,097,768	\$48,193,153	13.97%
08	\$326,005,820	\$27,296,598	8.37%	\$169,516,075	\$27,165,818	16.03%	\$495,521,895	\$54,462,415	10.99%
CO	\$0	\$0	0.00%	\$42,796,731	\$1,527,757	3.57%	\$42,796,731	\$1,527,757	3.57%
Total	\$2,846,444,928	\$325,409,031	11.43%	\$1,031,106,289	\$150,508,862	14.60%	\$3,877,551,216	\$475,917,892	12.27%

* Includes contracts with a submitted Commitment in the EOC System.