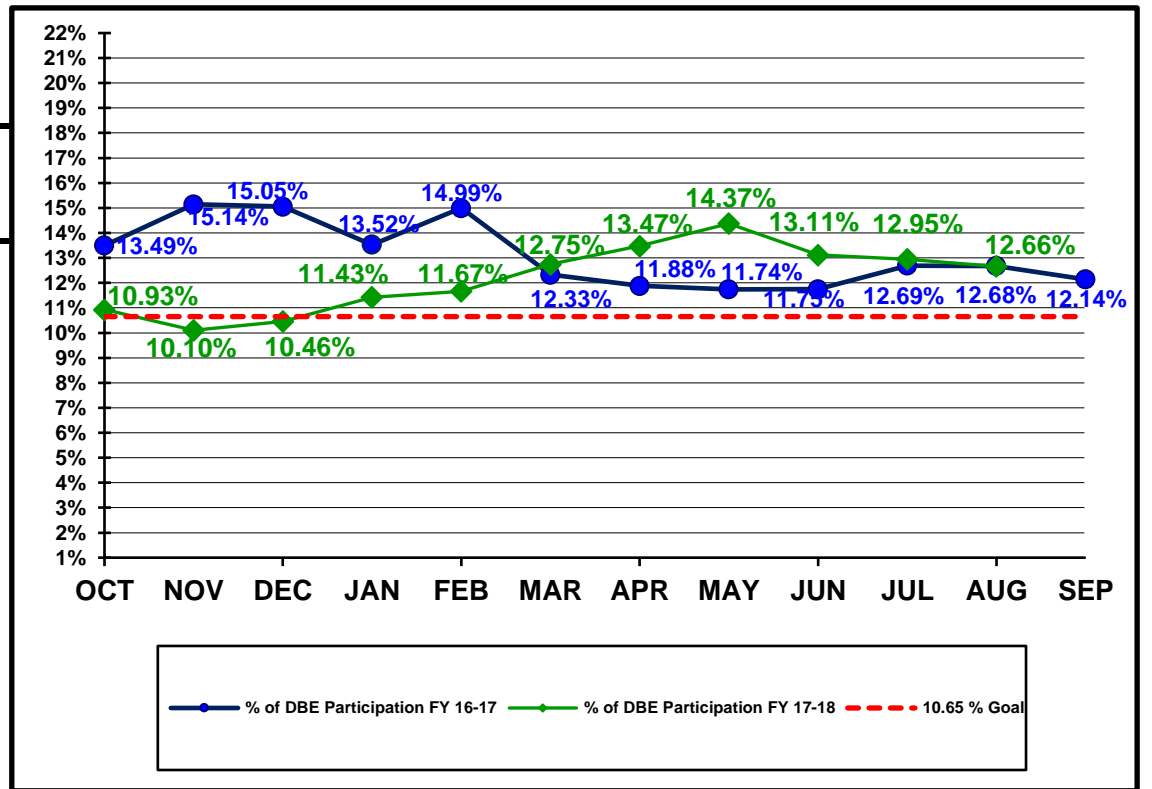


**Florida Department of Transportation
Disadvantaged Business Enterprises Anticipated Participation
FEDERAL FUNDED PROJECTS
As of 08/31/2018**

YTD COMPARISON BETWEEN FY 16-17 AND FY 17-18

	Contract \$ with DBEs Reported FY 16-17	DBE Participation \$ FY 16-17	Contract \$ with DBEs Reported FY 17-18	DBE Participation \$ FY 17-18
OCT	\$497,825,101	\$67,177,867	\$737,574,132	\$80,581,654
NOV	\$616,343,373	\$93,345,157	\$909,489,879	\$91,893,272
DEC	\$649,135,466	\$97,702,885	\$1,037,698,596	\$108,523,690
JAN	\$818,882,860	\$110,747,430	\$1,091,839,289	\$124,791,373
FEB	\$921,877,916	\$138,234,707	\$1,217,218,108	\$142,007,483
MAR	\$1,498,615,302	\$184,721,859	\$1,381,024,029	\$176,034,516
APR	\$1,683,534,122	\$200,022,149	\$1,562,450,903	\$210,512,919
MAY	\$1,756,148,678	\$206,147,536	\$1,704,614,109	\$244,976,561
JUN	\$1,983,056,295	\$232,942,006	\$2,011,689,651	\$263,828,963
JUL	\$2,095,431,689	\$265,871,354	\$2,129,061,171	\$275,622,845
AUG	\$2,231,693,686	\$282,912,321	\$2,471,230,984	\$312,833,817
SEP	\$2,476,519,153	\$300,621,154		



Florida Department of Transportation
 Executive Board Report
 Disadvantaged Business Enterprise Anticipated Participation
 For Reporting Period: 10/1/2017 to 8/31/2018
 Federal Funded Dollars
 By District and Type of Work

	* Construction / Maintenance			Professional Services			Total		
District	Amount	DBE Dollars	DBE %	Amount	DBE Dollars	DBE %	Amount	DBE Dollars	DBE %
01	\$105,290,449	\$11,099,004	10.54%	\$24,013,119	\$5,215,935	21.72%	\$129,303,567	\$16,314,939	12.62%
02	\$167,212,169	\$21,692,962	12.97%	\$25,083,488	\$3,994,963	15.93%	\$192,295,656	\$25,687,926	13.36%
03	\$355,280,370	\$38,940,232	10.96%	\$70,255,362	\$9,529,378	13.56%	\$425,535,732	\$48,469,610	11.39%
04	\$474,844,012	\$57,891,604	12.19%	\$55,562,336	\$12,423,216	22.36%	\$530,406,348	\$70,314,820	13.26%
05	\$688,028,464	\$71,102,676	10.33%	\$49,850,818	\$6,795,869	13.63%	\$737,879,282	\$77,898,545	10.56%
06	\$117,918,322	\$34,265,632	29.06%	\$33,146,580	\$3,161,584	9.54%	\$151,064,902	\$37,427,217	24.78%
07	\$298,104,948	\$35,910,734	12.05%	\$4,587,433	\$636,140	13.87%	\$302,692,380	\$36,546,874	12.07%
08	\$303,771	\$0	0.00%	\$0	\$0	0.00%	\$303,771	\$0	0.00%
CO	\$0	\$0	0.00%	\$1,749,345	\$173,886	9.94%	\$1,749,345	\$173,886	9.94%
Total	\$2,206,982,505	\$270,902,844	12.27%	\$264,248,481	\$41,930,971	15.87%	\$2,471,230,984	\$312,833,817	12.66%

* Includes contracts with a submitted Commitment in the EOC System.

Florida Department of Transportation
 Executive Board Report
 Disadvantaged Business Enterprise Anticipated Participation
 For Reporting Period: 10/1/2017 to 8/31/2018
 State Funded Dollars
 By District and Type of Work

	* Construction / Maintenance			Professional Services			Total		
District	Amount	DBE Dollars	DBE %	Amount	DBE Dollars	DBE %	Amount	DBE Dollars	DBE %
01	\$159,849,900	\$7,506,247	4.70%	\$89,616,088	\$16,012,563	17.87%	\$249,465,987	\$23,518,810	9.43%
02	\$181,684,865	\$4,626,280	2.55%	\$101,908,663	\$18,413,614	18.07%	\$283,593,528	\$23,039,894	8.12%
03	\$78,716,386	\$8,554,643	10.87%	\$69,499,992	\$6,822,950	9.82%	\$148,216,378	\$15,377,593	10.38%
04	\$108,535,077	\$19,781,359	18.23%	\$84,147,192	\$13,176,886	15.66%	\$192,682,270	\$32,958,245	17.10%
05	\$77,813,933	\$4,084,092	5.25%	\$129,015,193	\$20,141,704	15.61%	\$206,829,125	\$24,225,796	11.71%
06	\$98,479,856	\$20,373,802	20.69%	\$113,546,001	\$14,653,080	12.90%	\$212,025,857	\$35,026,883	16.52%
07	\$65,515,074	\$5,688,432	8.68%	\$96,976,808	\$9,527,709	9.82%	\$162,491,881	\$15,216,142	9.36%
08	\$392,461,052	\$27,992,062	7.13%	\$206,018,604	\$34,017,348	16.51%	\$598,479,656	\$62,009,410	10.36%
CO	\$0	\$0	0.00%	\$47,910,625	\$1,863,722	3.89%	\$47,910,625	\$1,863,722	3.89%
Total	\$1,163,056,143	\$98,606,917	8.48%	\$938,639,166	\$134,629,576	14.34%	\$2,101,695,308	\$233,236,494	11.10%

* Includes contracts with a submitted Commitment in the EOC System.

Florida Department of Transportation
 Executive Board Report
 Disadvantaged Business Enterprise Anticipated Participation
 For Reporting Period: 10/1/2017 to 8/31/2018
 Federal and State Funded Dollars
 By District and Type of Work

	* Construction / Maintenance			Professional Services			Total		
District	Amount	DBE Dollars	DBE %	Amount	DBE Dollars	DBE %	Amount	DBE Dollars	DBE %
01	\$265,140,348	\$18,605,250	7.02%	\$113,629,207	\$21,228,498	18.68%	\$378,769,555	\$39,833,748	10.52%
02	\$348,897,034	\$26,319,242	7.54%	\$126,992,151	\$22,408,578	17.65%	\$475,889,185	\$48,727,820	10.24%
03	\$433,996,757	\$47,494,875	10.94%	\$139,755,353	\$16,352,329	11.70%	\$573,752,110	\$63,847,204	11.13%
04	\$583,379,089	\$77,672,964	13.31%	\$139,709,529	\$25,600,101	18.32%	\$723,088,618	\$103,273,065	14.28%
05	\$765,842,397	\$75,186,768	9.82%	\$178,866,011	\$26,937,573	15.06%	\$944,708,408	\$102,124,341	10.81%
06	\$216,398,179	\$54,639,435	25.25%	\$146,692,581	\$17,814,665	12.14%	\$363,090,759	\$72,454,099	19.95%
07	\$363,620,021	\$41,599,167	11.44%	\$101,564,241	\$10,163,849	10.01%	\$465,184,262	\$51,763,016	11.13%
08	\$392,764,823	\$27,992,062	7.13%	\$206,018,604	\$34,017,348	16.51%	\$598,783,427	\$62,009,410	10.36%
CO	\$0	\$0	0.00%	\$49,659,970	\$2,037,608	4.10%	\$49,659,970	\$2,037,608	4.10%
Total	\$3,370,038,648	\$369,509,763	10.96%	\$1,202,887,647	\$176,560,549	14.68%	\$4,572,926,293	\$546,070,311	11.94%

* Includes contracts with a submitted Commitment in the EOC System.