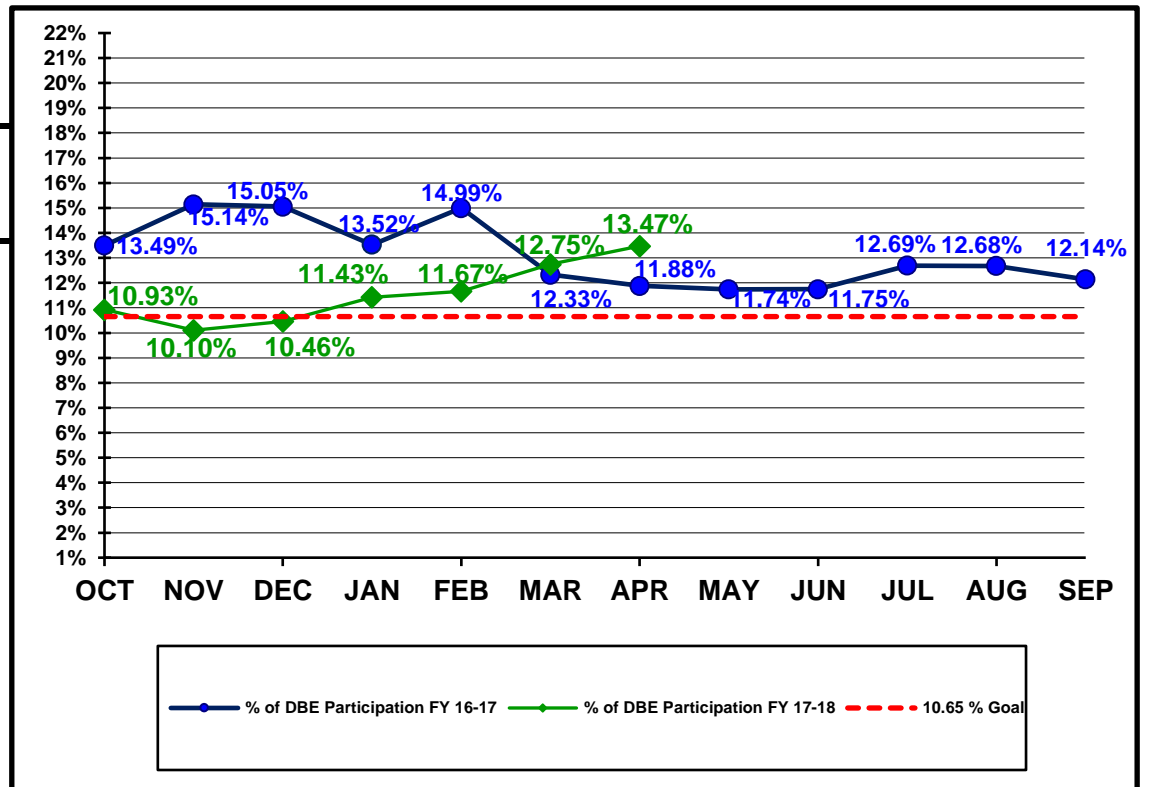


**Florida Department of Transportation
Disadvantaged Business Enterprises Anticipated Participation
FEDERAL FUNDED PROJECTS
As of 04/30/2018**

YTD COMPARISON BETWEEN FY 16-17 AND FY 17-18

	Contract \$ with DBEs Reported FY 16-17	DBE Participation \$ FY 16-17	Contract \$ with DBEs Reported FY 17-18	DBE Participation \$ FY 17-18
OCT	\$497,825,101	\$67,177,867	\$737,574,132	\$80,581,654
NOV	\$616,343,373	\$93,345,157	\$909,489,879	\$91,893,272
DEC	\$649,135,466	\$97,702,885	\$1,037,698,596	\$108,523,690
JAN	\$818,882,860	\$110,747,430	\$1,091,839,289	\$124,791,373
FEB	\$921,877,916	\$138,234,707	\$1,217,218,108	\$142,007,483
MAR	\$1,498,615,302	\$184,721,859	\$1,381,024,029	\$176,034,516
APR	\$1,683,534,122	\$200,022,149	\$1,562,450,903	\$210,512,919
MAY	\$1,756,148,678	\$206,147,536		
JUN	\$1,983,056,295	\$232,942,006		
JUL	\$2,095,431,689	\$265,871,354		
AUG	\$2,231,693,686	\$282,912,321		
SEP	\$2,476,519,153	\$300,621,154		



Florida Department of Transportation
 Executive Board Report
 Disadvantaged Business Enterprise Anticipated Participation
 For Reporting Period: 10/1/2017 to 4/30/2018
 Federal Funded Dollars
 By District and Type of Work

District	* Construction / Maintenance			Professional Services			Total		
	Amount	DBE Dollars	DBE %	Amount	DBE Dollars	DBE %	Amount	DBE Dollars	DBE %
01	\$76,934,915	\$7,123,473	9.26%	\$7,597,048	\$548,888	7.23%	\$84,531,962	\$7,672,361	9.08%
02	\$138,947,906	\$18,563,894	13.36%	\$9,252,201	\$1,944,532	21.02%	\$148,200,108	\$20,508,427	13.84%
03	\$262,476,140	\$29,089,969	11.08%	\$32,921,217	\$4,143,576	12.59%	\$295,397,357	\$33,233,545	11.25%
04	\$177,731,654	\$37,618,809	21.17%	\$13,452,489	\$7,180,274	53.38%	\$191,184,143	\$44,799,083	23.43%
05	\$591,490,524	\$59,970,551	10.14%	\$24,263,321	\$3,774,554	15.56%	\$615,753,846	\$63,745,104	10.35%
06	\$35,609,798	\$15,476,102	43.46%	\$18,012,692	\$2,027,144	11.25%	\$53,622,491	\$17,503,246	32.64%
07	\$169,543,801	\$22,766,673	13.43%	\$3,051,881	\$155,717	5.10%	\$172,595,682	\$22,922,390	13.28%
08	\$239,005	\$0	0.00%	\$0	\$0	0.00%	\$239,005	\$0	0.00%
CO	\$0	\$0	0.00%	\$926,309	\$128,762	13.90%	\$926,309	\$128,762	13.90%
Total	\$1,452,973,743	\$190,609,471	13.12%	\$109,477,158	\$19,903,447	18.18%	\$1,562,450,903	\$210,512,919	13.47%

* Includes contracts with a submitted Commitment in the EOC System.

Florida Department of Transportation
 Executive Board Report
 Disadvantaged Business Enterprise Anticipated Participation
 For Reporting Period: 10/1/2017 to 4/30/2018
 State Funded Dollars
 By District and Type of Work

	* Construction / Maintenance			Professional Services			Total		
District	Amount	DBE Dollars	DBE %	Amount	DBE Dollars	DBE %	Amount	DBE Dollars	DBE %
01	\$70,589,783	\$3,337,887	4.73%	\$46,621,542	\$10,735,991	23.03%	\$117,211,324	\$14,073,879	12.01%
02	\$72,099,739	\$3,675,879	5.10%	\$60,222,628	\$7,885,935	13.09%	\$132,322,367	\$11,561,813	8.74%
03	\$43,809,016	\$3,222,315	7.36%	\$35,189,275	\$3,438,616	9.77%	\$78,998,290	\$6,660,931	8.43%
04	\$42,754,048	\$14,299,859	33.45%	\$51,168,464	\$8,551,935	16.71%	\$93,922,513	\$22,851,794	24.33%
05	\$50,822,221	\$2,637,118	5.19%	\$73,921,808	\$11,654,455	15.77%	\$124,744,029	\$14,291,573	11.46%
06	\$60,565,151	\$6,059,163	10.00%	\$67,994,131	\$8,667,415	12.75%	\$128,559,282	\$14,726,578	11.46%
07	\$46,422,503	\$1,381,000	2.97%	\$53,958,341	\$5,352,097	9.92%	\$100,380,844	\$6,733,096	6.71%
08	\$173,917,675	\$18,901,677	10.87%	\$115,449,305	\$20,593,706	17.84%	\$289,366,980	\$39,495,383	13.65%
CO	\$0	\$0	0.00%	\$29,249,842	\$922,340	3.15%	\$29,249,842	\$922,340	3.15%
Total	\$560,980,136	\$53,514,898	9.54%	\$533,775,336	\$77,802,490	14.58%	\$1,094,755,472	\$131,317,388	12.00%

* Includes contracts with a submitted Commitment in the EOC System.

Florida Department of Transportation
 Executive Board Report
 Disadvantaged Business Enterprise Anticipated Participation
 For Reporting Period: 10/1/2017 to 4/30/2018
 Federal and State Funded Dollars
 By District and Type of Work

	* Construction / Maintenance			Professional Services			Total		
District	Amount	DBE Dollars	DBE %	Amount	DBE Dollars	DBE %	Amount	DBE Dollars	DBE %
01	\$147,524,697	\$10,461,360	7.09%	\$54,218,589	\$11,284,879	20.81%	\$201,743,287	\$21,746,240	10.78%
02	\$211,047,645	\$22,239,773	10.54%	\$69,474,829	\$9,830,467	14.15%	\$280,522,475	\$32,070,240	11.43%
03	\$306,285,155	\$32,312,284	10.55%	\$68,110,492	\$7,582,193	11.13%	\$374,395,647	\$39,894,477	10.66%
04	\$220,485,703	\$51,918,668	23.55%	\$64,620,953	\$15,732,209	24.35%	\$285,106,656	\$67,650,877	23.73%
05	\$642,312,746	\$62,607,669	9.75%	\$98,185,129	\$15,429,009	15.71%	\$740,497,875	\$78,036,678	10.54%
06	\$96,174,949	\$21,535,265	22.39%	\$86,006,824	\$10,694,559	12.43%	\$182,181,773	\$32,229,824	17.69%
07	\$215,966,305	\$24,147,672	11.18%	\$57,010,222	\$5,507,814	9.66%	\$272,976,526	\$29,655,487	10.86%
08	\$174,156,681	\$18,901,677	10.85%	\$115,449,305	\$20,593,706	17.84%	\$289,605,986	\$39,495,383	13.64%
CO	\$0	\$0	0.00%	\$30,176,151	\$1,051,102	3.48%	\$30,176,151	\$1,051,102	3.48%
Total	\$2,013,953,881	\$244,124,368	12.12%	\$643,252,494	\$97,705,938	15.19%	\$2,657,206,375	\$341,830,307	12.86%

* Includes contracts with a submitted Commitment in the EOC System.