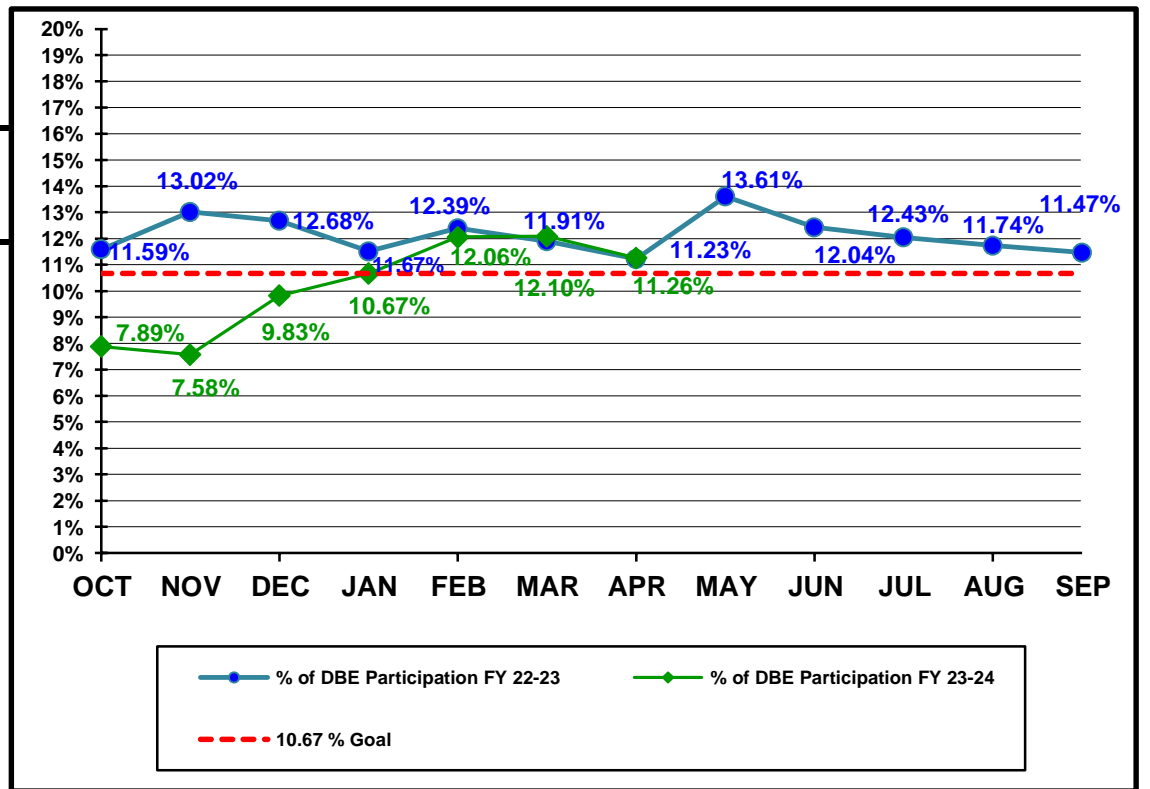


**Florida Department of Transportation  
Disadvantaged Business Enterprises Anticipated Participation  
FEDERAL FUNDED PROJECTS  
As of 4/30/2024**

**YTD COMPARISON BETWEEN FY 22-23 AND FY 23-24**

	Contract \$ with DBEs Reported FY 22-23	DBE Participation \$ FY 22-23	Contract \$ with DBEs Reported FY 23-24	DBE Participation \$ FY 23-24
OCT	\$149,157,308	\$17,291,139	\$241,506,937	\$19,055,901
NOV	\$282,146,289	\$36,723,908	\$311,838,560	\$23,632,413
DEC	\$360,669,011	\$45,728,801	\$503,257,921	\$49,475,456
JAN	\$617,526,485	\$71,105,756	\$942,690,577	\$100,583,789
FEB	\$737,542,050	\$91,402,187	\$1,087,477,908	\$131,199,776
MAR	\$874,391,919	\$104,099,676	\$1,200,328,326	\$145,180,297
APR	\$1,089,665,153	\$122,379,405	\$1,419,346,192	\$159,813,459
MAY	\$1,268,669,783	\$172,653,920		
JUN	\$1,543,290,091	\$191,858,324		
JUL	\$1,709,068,998	\$205,819,018		
AUG	\$1,927,002,881	\$226,216,818		
SEP	\$2,444,699,974	\$280,394,968		



Florida Department of Transportation  
 Executive Board Report  
 Disadvantaged Business Enterprise Anticipated Participation  
 For Reporting Period: 10/1/2023 to 4/30/2024  
 Federal Funded Dollars  
 By District and Type of Work

	* Construction / Maintenance			Professional Services			Total		
District	Amount	DBE Dollars	DBE %	Amount	DBE Dollars	DBE %	Amount	DBE Dollars	DBE %
01	\$164,784,932	\$8,748,729	5.31%	\$22,459,752	\$7,069,535	31.48%	\$187,244,684	\$15,818,265	8.45%
02	\$125,675,720	\$10,311,308	8.20%	\$31,167,530	\$4,788,324	15.36%	\$156,843,251	\$15,099,632	9.63%
03	\$201,999,489	\$11,988,353	5.93%	\$27,539,024	\$6,544,334	23.76%	\$229,538,513	\$18,532,688	8.07%
04	\$112,549,274	\$38,238,199	33.97%	\$12,660,895	\$4,016,156	31.72%	\$125,210,169	\$42,254,356	33.75%
05	\$208,096,351	\$20,502,228	9.85%	\$55,340,725	\$6,488,073	11.72%	\$263,437,076	\$26,990,301	10.25%
06	\$79,262,272	\$18,719,825	23.62%	\$9,659,537	\$546,268	5.66%	\$88,921,809	\$19,266,093	21.67%
07	\$344,305,520	\$19,466,857	5.65%	\$13,084,983	\$2,329,542	17.80%	\$357,390,503	\$21,796,399	6.10%
08	\$0	\$0	0.00%	\$0	\$0	0.00%	\$0	\$0	0.00%
CO	\$0	\$0	0.00%	\$10,760,186	\$55,725	0.52%	\$10,760,186	\$55,725	0.52%
<b>Total</b>	<b>\$1,236,673,558</b>	<b>\$127,975,499</b>	<b>10.35%</b>	<b>\$182,672,632</b>	<b>\$31,837,957</b>	<b>17.43%</b>	<b>\$1,419,346,192</b>	<b>\$159,813,459</b>	<b>11.26%</b>

\* Includes contracts with a submitted Commitment in the EOC System.

Florida Department of Transportation  
 Executive Board Report  
 Disadvantaged Business Enterprise Anticipated Participation  
 For Reporting Period: 10/1/2023 to 4/30/2024  
 State Funded Dollars  
 By District and Type of Work

	* Construction / Maintenance			Professional Services			Total		
District	Amount	DBE Dollars	DBE %	Amount	DBE Dollars	DBE %	Amount	DBE Dollars	DBE %
01	\$95,610,430	\$10,846,517	11.34%	\$68,738,334	\$15,756,305	22.92%	\$164,348,764	\$26,602,823	16.19%
02	\$121,345,515	\$3,806,096	3.14%	\$84,480,133	\$8,588,993	10.17%	\$205,825,648	\$12,395,089	6.02%
03	\$113,313,849	\$12,199,796	10.77%	\$56,473,750	\$9,087,865	16.09%	\$169,787,600	\$21,287,660	12.54%
04	\$90,409,375	\$13,055,653	14.44%	\$63,799,522	\$14,780,153	23.17%	\$154,208,897	\$27,835,806	18.05%
05	\$105,417,327	\$8,012,310	7.60%	\$105,581,825	\$16,287,490	15.43%	\$210,999,152	\$24,299,800	11.52%
06	\$29,139,429	\$6,806,183	23.36%	\$90,516,649	\$6,736,981	7.44%	\$119,656,078	\$13,543,164	11.32%
07	\$103,264,479	\$8,890,393	8.61%	\$56,809,226	\$11,689,716	20.58%	\$160,073,705	\$20,580,109	12.86%
08	\$302,563,478	\$27,762,998	9.18%	\$125,039,337	\$20,066,463	16.05%	\$427,602,815	\$47,829,460	11.19%
CO	\$0	\$0	0.00%	\$30,853,936	\$1,463,352	4.74%	\$30,853,936	\$1,463,352	4.74%
<b>Total</b>	<b>\$961,063,882</b>	<b>\$91,379,946</b>	<b>9.51%</b>	<b>\$682,292,712</b>	<b>\$104,457,318</b>	<b>15.31%</b>	<b>\$1,643,356,595</b>	<b>\$195,837,264</b>	<b>11.92%</b>

\* Includes contracts with a submitted Commitment in the EOC System.

Florida Department of Transportation  
 Executive Board Report  
 Disadvantaged Business Enterprise Anticipated Participation  
 For Reporting Period: 10/1/2023 to 4/30/2024  
 Federal and State Funded Dollars  
 By District and Type of Work

	* Construction / Maintenance			Professional Services			Total		
District	Amount	DBE Dollars	DBE %	Amount	DBE Dollars	DBE %	Amount	DBE Dollars	DBE %
01	\$260,395,362	\$19,595,246	7.53%	\$91,198,086	\$22,825,841	25.03%	\$351,593,448	\$42,421,087	12.07%
02	\$247,021,235	\$14,117,405	5.72%	\$115,647,663	\$13,377,317	11.57%	\$362,668,898	\$27,494,721	7.58%
03	\$315,313,339	\$24,188,149	7.67%	\$84,012,775	\$15,632,199	18.61%	\$399,326,113	\$39,820,348	9.97%
04	\$202,958,649	\$51,293,852	25.27%	\$76,460,418	\$18,796,310	24.58%	\$279,419,066	\$70,090,162	25.08%
05	\$313,513,678	\$28,514,538	9.10%	\$160,922,550	\$22,775,562	14.15%	\$474,436,228	\$51,290,100	10.81%
06	\$108,401,701	\$25,526,009	23.55%	\$100,176,186	\$7,283,249	7.27%	\$208,577,887	\$32,809,257	15.73%
07	\$447,569,999	\$28,357,250	6.34%	\$69,894,209	\$14,019,258	20.06%	\$517,464,208	\$42,376,509	8.19%
08	\$302,563,478	\$27,762,998	9.18%	\$125,039,337	\$20,066,463	16.05%	\$427,602,815	\$47,829,460	11.19%
CO	\$0	\$0	0.00%	\$41,614,122	\$1,519,077	3.65%	\$41,614,122	\$1,519,077	3.65%
<b>Total</b>	<b>\$2,197,737,441</b>	<b>\$219,355,447</b>	<b>9.98%</b>	<b>\$864,965,346</b>	<b>\$136,295,276</b>	<b>15.76%</b>	<b>\$3,062,702,786</b>	<b>\$355,650,723</b>	<b>11.61%</b>

\* Includes contracts with a submitted Commitment in the EOC System.