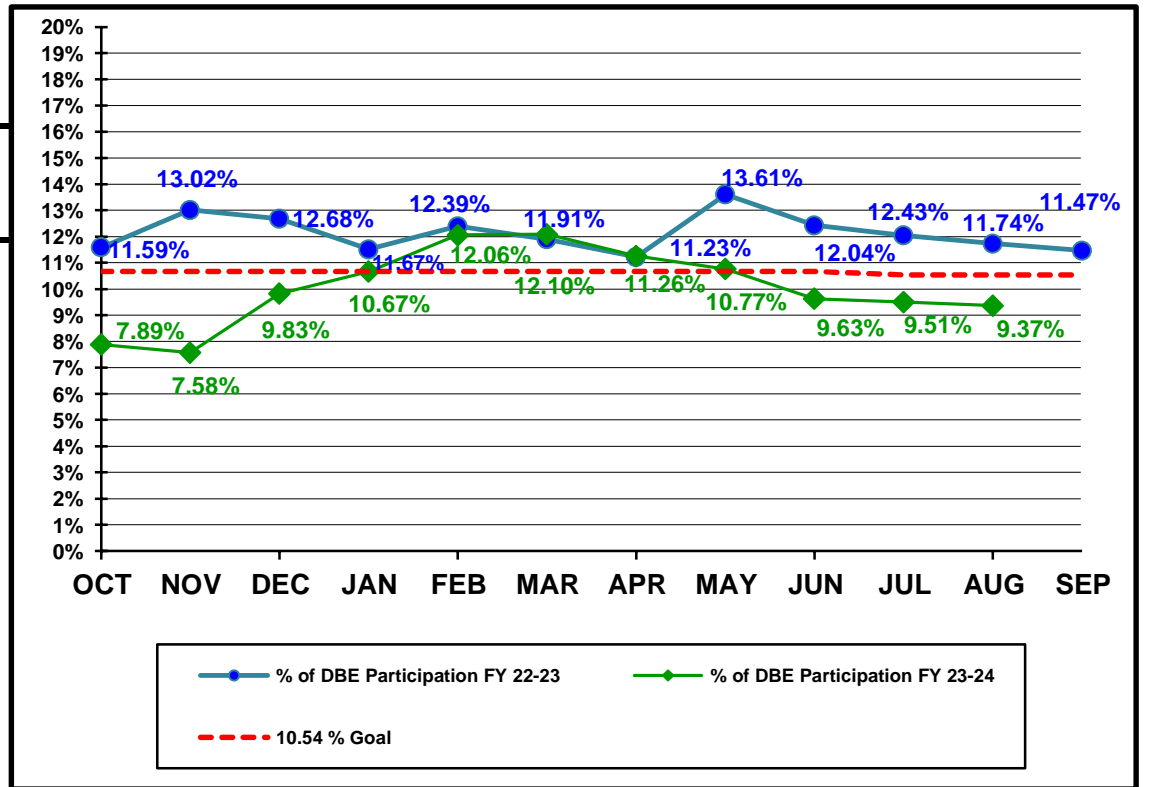


**Florida Department of Transportation
Disadvantaged Business Enterprises Anticipated Participation
FEDERAL FUNDED PROJECTS
As of 8/31/2024**

YTD COMPARISON BETWEEN FY 22-23 AND FY 23-24

	Contract \$ with DBEs Reported FY 22-23	DBE Participation \$ FY 22-23	Contract \$ with DBEs Reported FY 23-24	DBE Participation \$ FY 23-24
OCT	\$149,157,308	\$17,291,139	\$241,506,937	\$19,055,901
NOV	\$282,146,289	\$36,723,908	\$311,838,560	\$23,632,413
DEC	\$360,669,011	\$45,728,801	\$503,257,921	\$49,475,456
JAN	\$617,526,485	\$71,105,756	\$942,690,577	\$100,583,789
FEB	\$737,542,050	\$91,402,187	\$1,087,477,908	\$131,199,776
MAR	\$874,391,919	\$104,099,676	\$1,200,328,326	\$145,180,297
APR	\$1,089,665,153	\$122,379,405	\$1,419,346,192	\$159,813,459
MAY	\$1,268,669,783	\$172,653,920	\$1,680,646,734	\$180,958,151
JUN	\$1,543,290,091	\$191,858,324	\$2,189,957,702	\$210,896,621
JUL	\$1,709,068,998	\$205,819,018	\$2,596,412,966	\$246,858,655
AUG	\$1,927,002,881	\$226,216,818	\$2,829,242,524	\$265,033,562
SEP	\$2,444,699,974	\$280,394,968		



Florida Department of Transportation
 Executive Board Report
 Disadvantaged Business Enterprise Anticipated Participation
 For Reporting Period: 10/1/2023 to 8/31/2024
 Federal Funded Dollars
 By District and Type of Work

	* Construction / Maintenance			Professional Services			Total		
District	Amount	DBE Dollars	DBE %	Amount	DBE Dollars	DBE %	Amount	DBE Dollars	DBE %
01	\$341,249,770	\$19,815,705	5.81%	\$48,108,845	\$10,756,902	22.36%	\$389,358,615	\$30,572,607	7.85%
02	\$367,851,520	\$20,332,853	5.53%	\$54,994,174	\$9,728,724	17.69%	\$422,845,694	\$30,061,577	7.11%
03	\$441,361,034	\$22,039,957	4.99%	\$70,487,214	\$8,176,523	11.60%	\$511,848,248	\$30,216,480	5.90%
04	\$261,562,841	\$58,394,631	22.33%	\$34,347,098	\$7,844,345	22.84%	\$295,909,938	\$66,238,976	22.38%
05	\$302,362,412	\$22,549,497	7.46%	\$81,303,885	\$11,842,660	14.57%	\$383,666,297	\$34,392,158	8.96%
06	\$136,153,406	\$22,811,543	16.75%	\$30,716,670	\$1,801,202	5.86%	\$166,870,076	\$24,612,745	14.75%
07	\$590,720,713	\$41,656,916	7.05%	\$49,222,444	\$6,942,473	14.10%	\$639,943,157	\$48,599,390	7.59%
08	\$0	\$0	0.00%	\$0	\$0	0.00%	\$0	\$0	0.00%
CO	\$0	\$0	0.00%	\$18,800,498	\$339,628	1.81%	\$18,800,498	\$339,628	1.81%
Total	\$2,441,261,696	\$207,601,102	8.50%	\$387,980,828	\$57,432,457	14.80%	\$2,829,242,524	\$265,033,562	9.37%

* Includes contracts with a submitted Commitment in the EOC System.

Florida Department of Transportation
 Executive Board Report
 Disadvantaged Business Enterprise Anticipated Participation
 For Reporting Period: 10/1/2023 to 8/31/2024
 State Funded Dollars
 By District and Type of Work

	* Construction / Maintenance			Professional Services			Total		
District	Amount	DBE Dollars	DBE %	Amount	DBE Dollars	DBE %	Amount	DBE Dollars	DBE %
01	\$236,235,150	\$16,198,773	6.86%	\$108,943,281	\$24,488,556	22.48%	\$345,178,431	\$40,687,329	11.79%
02	\$157,840,551	\$6,525,147	4.13%	\$128,217,140	\$13,900,581	10.84%	\$286,057,690	\$20,425,728	7.14%
03	\$227,373,127	\$18,210,632	8.01%	\$110,425,737	\$14,917,446	13.51%	\$337,798,864	\$33,128,078	9.81%
04	\$87,640,694	\$19,518,161	22.27%	\$106,264,042	\$23,751,788	22.35%	\$193,904,735	\$43,269,949	22.32%
05	\$208,860,216	\$17,976,437	8.61%	\$165,070,306	\$30,780,106	18.65%	\$373,930,522	\$48,756,542	13.04%
06	\$50,140,783	\$14,295,654	28.51%	\$124,845,765	\$13,620,593	10.91%	\$174,986,548	\$27,916,247	15.95%
07	\$340,879,861	\$12,384,992	3.63%	\$98,169,656	\$19,857,845	20.23%	\$439,049,517	\$32,242,837	7.34%
08	\$373,764,171	\$41,832,195	11.19%	\$209,807,676	\$29,848,412	14.23%	\$583,571,847	\$71,680,607	12.28%
CO	\$0	\$0	0.00%	\$52,000,287	\$2,291,724	4.41%	\$52,000,287	\$2,291,724	4.41%
Total	\$1,682,734,553	\$146,941,991	8.73%	\$1,103,743,890	\$173,457,051	15.72%	\$2,786,478,442	\$320,399,042	11.50%

* Includes contracts with a submitted Commitment in the EOC System.

Florida Department of Transportation
 Executive Board Report
 Disadvantaged Business Enterprise Anticipated Participation
 For Reporting Period: 10/1/2023 to 8/31/2024
 Federal and State Funded Dollars
 By District and Type of Work

	* Construction / Maintenance			Professional Services			Total		
District	Amount	DBE Dollars	DBE %	Amount	DBE Dollars	DBE %	Amount	DBE Dollars	DBE %
01	\$577,484,920	\$36,014,478	6.24%	\$157,052,126	\$35,245,458	22.44%	\$734,537,046	\$71,259,936	9.70%
02	\$525,692,071	\$26,858,001	5.11%	\$183,211,314	\$23,629,305	12.90%	\$708,903,384	\$50,487,305	7.12%
03	\$668,734,161	\$40,250,589	6.02%	\$180,912,951	\$23,093,969	12.77%	\$849,647,112	\$63,344,558	7.46%
04	\$349,203,534	\$77,912,792	22.31%	\$140,611,139	\$31,596,133	22.47%	\$489,814,674	\$109,508,925	22.36%
05	\$511,222,629	\$40,525,934	7.93%	\$246,374,191	\$42,622,766	17.30%	\$757,596,820	\$83,148,700	10.98%
06	\$186,294,189	\$37,107,198	19.92%	\$155,562,435	\$15,421,795	9.91%	\$341,856,624	\$52,528,993	15.37%
07	\$931,600,574	\$54,041,908	5.80%	\$147,392,100	\$26,800,319	18.18%	\$1,078,992,674	\$80,842,227	7.49%
08	\$373,764,171	\$41,832,195	11.19%	\$209,807,676	\$29,848,412	14.23%	\$583,571,847	\$71,680,607	12.28%
CO	\$0	\$0	0.00%	\$70,800,785	\$2,631,352	3.72%	\$70,800,785	\$2,631,352	3.72%
Total	\$4,123,996,249	\$354,543,095	8.60%	\$1,491,724,717	\$230,889,509	15.48%	\$5,615,720,966	\$585,432,604	10.42%

* Includes contracts with a submitted Commitment in the EOC System.