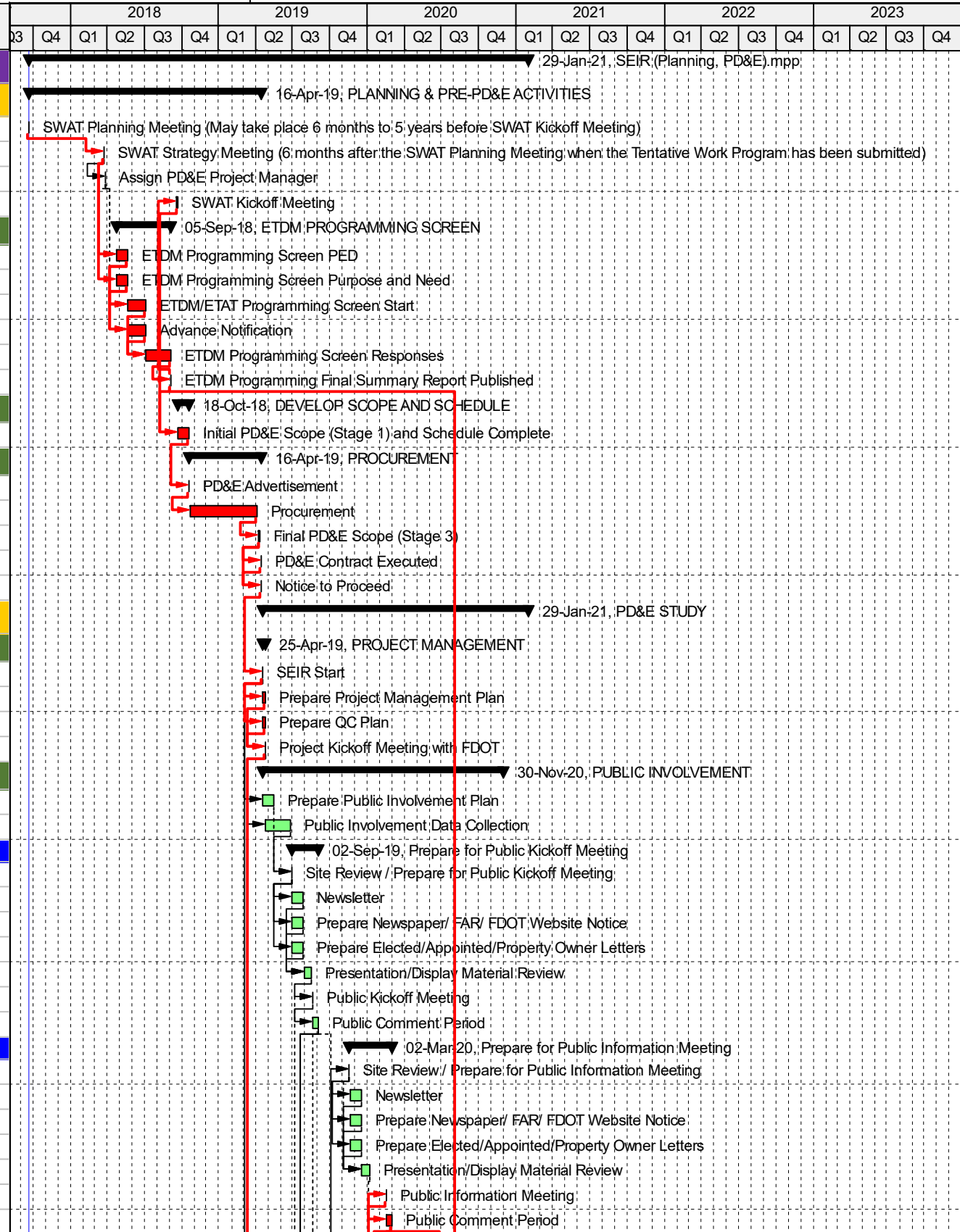


Activity ID	PSM Code	Activity Name	Start	Finish	Total Float	Predecessors	Successors
SEIR (Planning, PD&E).mpp							
PLANNING & PRE-PD&E ACTIVITIES							
74600	746	SWAT Planning Meeting (May take place 6 months to 5 years before SWAT Kickoff Meeting)	21-Sep-17	21-Sep-17*	0		77000
77000	770	SWAT Strategy Meeting (6 months after the SWAT Planning Meeting when the Tentative Work Program has been submitted)	26-Mar-18	26-Mar-18	0	74600	70400, S1030, S1040
70400	704	Assign PD&E Project Manager	27-Mar-18	27-Mar-18	19	77000	S1030, 70000, 22400
74700	747	SWAT Kickoff Meeting	20-Sep-18	20-Sep-18	0	70200	16401
ETDM PROGRAMMING SCREEN							
S1030		ETDM Programming Screen PED	24-Apr-18	21-May-18	0	77000, 70400	70000, 22400
S1040		ETDM Programming Screen Purpose and Need	24-Apr-18	21-May-18	0	77000	70000, 22400
70000	700	ETDM/ETAT Programming Screen Start	22-May-18	04-Jul-18	0	S1030, S1040, 70	S1060
22400	224	Advance Notification	22-May-18	04-Jul-18	0	S1030, S1040, 70	S1060
S1060		ETDM Programming Screen Responses	05-Jul-18	04-Sep-18	0	70000, 22400	70200
70200	702	ETDM Programming Final Summary Report Published	05-Sep-18	05-Sep-18	0	S1060	74700, 16401, S2080
DEVELOP SCOPE AND SCHEDULE							
16401	164	Initial PD&E Scope (Stage 1) and Schedule Complete	21-Sep-18	18-Oct-18	0	70200, 74700	70500
PROCUREMENT							
70500	705	PD&E Advertisement	19-Oct-18	19-Oct-18	0	16401	S1110
S1110		Procurement	22-Oct-18	05-Apr-19	0	70500	16403
16403	164	Final PD&E Scope (Stage 3)	08-Apr-19	12-Apr-19	0	S1110	23900, 23400
23900	239	PD&E Contract Executed	15-Apr-19	15-Apr-19	0	16403	23400
23400	234	Notice to Proceed	16-Apr-19*	16-Apr-19	0	16403, 23900	70900
PD&E STUDY							
PROJECT MANAGEMENT							
70900	709	SEIR Start	17-Apr-19	17-Apr-19	0	23400	S1160, S1170, 74800,
S1160		Prepare Project Management Plan	18-Apr-19	24-Apr-19	0	70900	S1210
S1170		Prepare QC Plan	18-Apr-19	24-Apr-19	0	70900	S1210
S1210		Project Kickoff Meeting with FDOT	25-Apr-19	25-Apr-19	0	S1160, S1170	S1220, S1230, S1240
PUBLIC INVOLVEMENT							
74800	748	Prepare Public Involvement Plan	18-Apr-19	15-May-19	53	70900	36501
S1220		Public Involvement Data Collection	26-Apr-19	27-Jun-19	22	S1210	36501
Prepare for Public Kickoff Meeting							
36501	365	Site Review / Prepare for Public Kickoff Meeting	28-Jun-19	28-Jun-19	22	74800, S1220	S1390, S1400, S1410
S1390		Newsletter	01-Jul-19	26-Jul-19	22	36501	S1430
S1400		Prepare Newspaper/ FAR/ FDOT Website Notice	01-Jul-19	26-Jul-19	22	36501	S1430
S1410		Prepare Elected/Appointed/Property Owner Letters	01-Jul-19	26-Jul-19	22	36501	S1430
S1430		Presentation/Display Material Review	29-Jul-19	16-Aug-19	22	S1410, S1390, S1	29201
29201	292	Public Kickoff Meeting	19-Aug-19	19-Aug-19	22	S1280, S1430	S1460
S1460		Public Comment Period	20-Aug-19	02-Sep-19	22	29201	36502, S1470, S1480
Prepare for Public Information Meeting							
36502	365	Site Review / Prepare for Public Information Meeting	18-Nov-19	18-Nov-19	29	S1790, S1460	S1620, S1630, S1640
S1620		Newsletter	19-Nov-19	16-Dec-19	29	36502	S1660
S1630		Prepare Newspaper/ FAR/ FDOT Website Notice	19-Nov-19	16-Dec-19	29	36502	S1660
S1640		Prepare Elected/Appointed/Property Owner Letters	19-Nov-19	16-Dec-19	29	36502	S1660
S1660		Presentation/Display Material Review	17-Dec-19	06-Jan-20	29	36502, S1620, S1	29202
29202	292	Public Information Meeting	17-Feb-20	17-Feb-20	0	S1790, S1660	S1860
S1860		Public Comment Period	18-Feb-20	02-Mar-20	0	29202	36600, S1870, S1890



█ Actual Level of Effort
 █ Remaining Work
 ◆ Milestone
█ Actual Work
 █ Critical Remaining Work
 ⇨ summary

Activity ID	PSM Code	Activity Name	Start	Finish	Total Float	Predecessors	Successors	2018												2019				2020				2021				2022				2023			
								Q3	Q4	Q1	Q2	Q3	Q4	Q1	Q2	Q3	Q4	Q1	Q2	Q3	Q4	Q1	Q2	Q3	Q4	Q1	Q2	Q3	Q4	Q1	Q2	Q3	Q4	Q1	Q2	Q3	Q4		
Prepare for Public Hearing								30-Nov-20, Prepare for Public Hearing																															
36600	366	Site Review / Prepare for Public Hearing	10-Aug-20	04-Sep-20	0	S1860, 71300	S2040, S2050, S2060	Site Review / Prepare for Public Hearing																															
S2040		Newsletter	07-Sep-20	02-Oct-20	0	36600	S2100	Newsletter																															
S2050		Prepare Newspaper/ FAR/ FDOT Website Notice	07-Sep-20	02-Oct-20	0	36600	S2100	Prepare Newspaper/ FAR/ FDOT Website Notice																															
S2060		Prepare Elected/Appointed/Property Owner Letters	07-Sep-20	02-Oct-20	0	36600	S2100	Prepare Elected/Appointed/Property Owner Letters																															
S2100		Presentation/Display Material Review	05-Oct-20	23-Oct-20	0	36600, S2040, S2	S2120, 26200	Presentation/Display Material Review																															
S2120		Document Available for Public Review	26-Oct-20	13-Nov-20	0	S2100, 71300, 76	26200	Document Available for Public Review																															
26200	262	Public Hearing	16-Nov-20	16-Nov-20	0	S2120, S2100	S2140	Public Hearing																															
S2140		Public Comment Period	17-Nov-20	30-Nov-20	0	26200	S2150, 33500, 76000	Public Comment Period																															
ENGINEERING ANALYSIS								13-Oct-20, ENGINEERING ANALYSIS																															
Data Collection								06-Jun-19, Data Collection																															
S1230		Roadway Data Collection	26-Apr-19	06-Jun-19	84	S1210	S1350, S1490, S1360	Roadway Data Collection																															
S1240		Drainage Data Collection	26-Apr-19	06-Jun-19	84	S1210	S1350, S1490, S1360	Drainage Data Collection																															
S1250		Bridge Data Collection	26-Apr-19	06-Jun-19	84	S1210	S1350, S1490, S1360	Bridge Data Collection																															
S1260		Geotechnical Data Collection	26-Apr-19	06-Jun-19	84	S1210	S1350, S1490, S1360	Geotechnical Data Collection																															
S1270		Topographic Survey and ROW Mapping	26-Apr-19	06-Jun-19	84	S1210	S1350, S1490, S1360	Topographic Survey and ROW Mapping																															
S1280		Prepare Base Map	26-Apr-19	06-Jun-19	73	S1210	29201, S1490, S1360	Prepare Base Map																															
Traffic Analysis								02-Oct-19, Traffic Analysis																															
S1290		Traffic Methodology Meeting	26-Apr-19	26-Apr-19	0	S1210	S1310	Traffic Methodology Meeting																															
S1310		Traffic Methodology Memorandum	29-Apr-19	10-May-19	0	S1290	S1330	Traffic Methodology Memorandum																															
S1330		Forecasting and Analysis	13-May-19	12-Jun-19	0	S1310	S1370	Forecasting and Analysis																															
S1370		Prepare Traffic Projections	13-Jun-19	10-Jul-19	0	S1330	S1420	Prepare Traffic Projections																															
S1420		Prepare Capacity Analysis	11-Jul-19	07-Aug-19	0	S1370	S1440	Prepare Capacity Analysis																															
S1440		Draft Traffic Analysis Report	08-Aug-19	04-Sep-19	0	S1420	S1500	Draft Traffic Analysis Report																															
S1500		District Review - Draft Traffic Analysis Report	05-Sep-19	25-Sep-19	0	S1440	75700	District Review - Draft Traffic Analysis Report																															
75700	757	Final Traffic Analysis Report	26-Sep-19	02-Oct-19	0	S1500	S1520, S1530, S1540	Final Traffic Analysis Report																															
Interchange Access Request								21-Jan-20, Interchange Access Request																															
S1190		Initiate IAR	18-Apr-19	18-Apr-19	270	70900	S1200	Initiate IAR																															
S1200		Prepare MLOU	19-Apr-19	02-May-19	270	S1190	S1320	Prepare MLOU																															
S1320		DIRC/SPO Review of MLOU	03-May-19	23-May-19	270	S1200	S1470	DIRC/SPO Review of MLOU																															
S1470		Develop Alternatives	03-Sep-19	14-Oct-19	198	S1460, S1320	S1550	Develop Alternatives																															
S1550		Perform Operational Analysis	15-Oct-19	11-Nov-19	198	S1470	S1560	Perform Operational Analysis																															
S1560		Prepare Preliminary IAR	12-Nov-19	09-Dec-19	198	S1550	S1650	Prepare Preliminary IAR																															
S1650		DIRC/SPO Review of Preliminary IAR	10-Dec-19	23-Dec-19	198	S1560	S1670	DIRC/SPO Review of Preliminary IAR																															
S1670		Comment Resolution & Prepare Final IAR	24-Dec-19	06-Jan-20	198	S1650	S1770	Comment Resolution & Prepare Final IAR																															
S1770		DIRC/SPO Review of Final IAR	07-Jan-20	20-Jan-20	198	S1670	76500	DIRC/SPO Review of Final IAR																															
76500	765	Safety, Operations and Engineering and IAR Approval	21-Jan-20	21-Jan-20	198	S1770	S2120	Safety, Operations and Engineering and IAR Approval																															
Alternative Analysis								13-Oct-20, Alternative Analysis																															
S1350		Structure Analysis	07-Jun-19	18-Jul-19	114	S1230, S1240, S1	S1680	Structure Analysis																															
S1360		Complete Streets/Multi Modal Analysis	07-Jun-19	18-Jul-19	114	S1230, S1240, S1	S1680	Complete Streets/Multi Modal Analysis																															
S1480		Roadway Analysis	03-Sep-19	14-Oct-19	52	S1460	S1680	Roadway Analysis																															
S1490		Typical Sections Analysis	03-Sep-19	30-Sep-19	62	S1230, S1240, S1	S1680	Typical Sections Analysis																															
S1520		Transit Analysis	03-Oct-19	13-Nov-19	30	S1230, S1240, S1	S1680	Transit Analysis																															
S1530		Concept Development	03-Oct-19	13-Nov-19	0	S1230, S1240, S1	S1570, S1580, S1590	Concept Development																															
S1540		Access Management Analysis	03-Oct-19	13-Nov-19	30	75700	S1680	Access Management Analysis																															
S1570		Drainage Analysis	14-Nov-19	25-Dec-19	0	S1530	S1680	Drainage Analysis																															
S1580		Utility Coordination & Analysis	14-Nov-19	25-Dec-19	0	S1530	S1680	Utility Coordination & Analysis																															

█ Actual Level of Effort
 █ Remaining Work
 █ Actual Work
 █ Critical Remaining Work
 ◆ Milestone
 ── summary

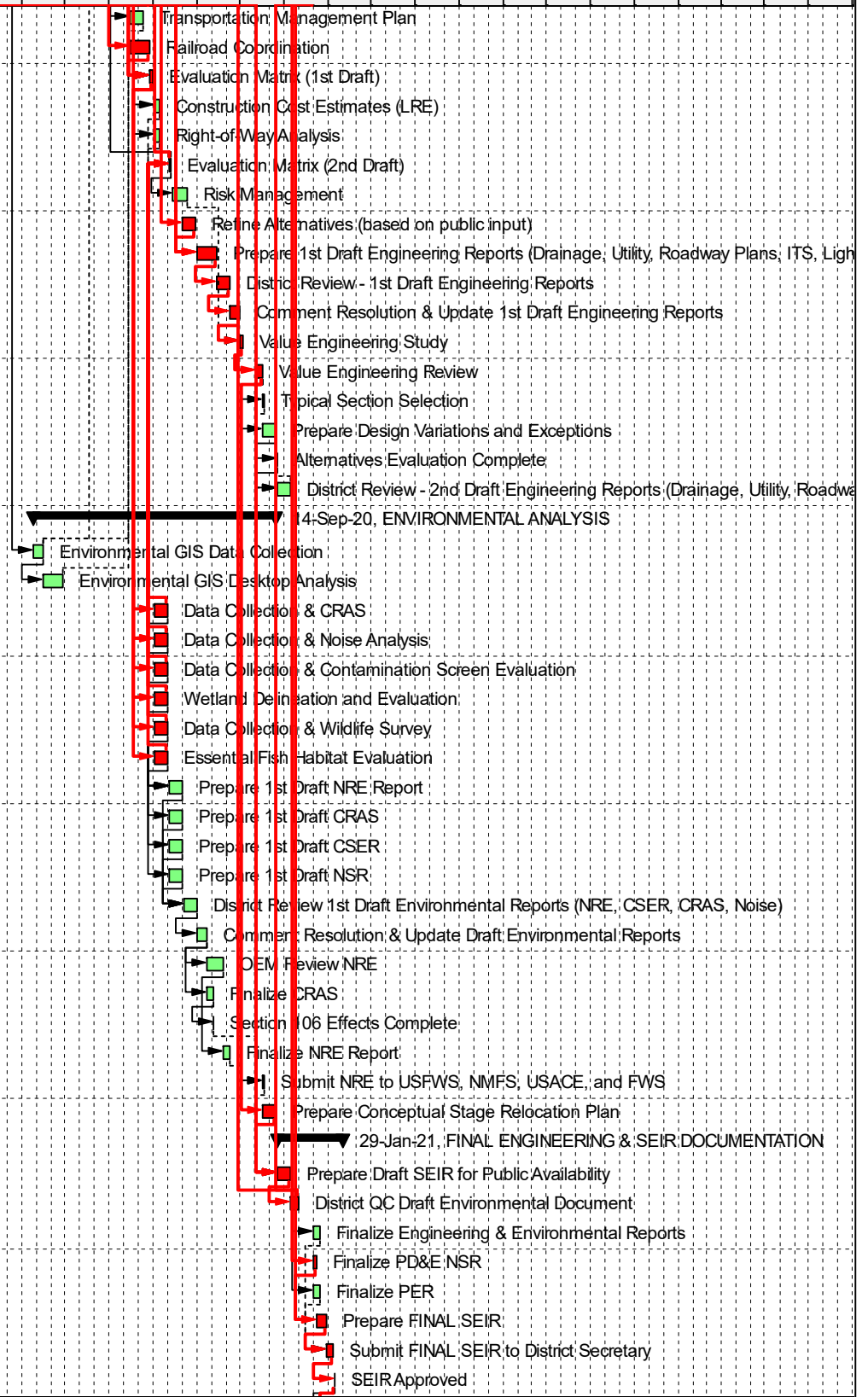
Activity ID	PSM Code	Activity Name	Start	Finish	Total Float	Predecessors	Successors	Classic Schedule Layout																							
								2018				2019				2020				2021				2022				2023			
								Q3	Q4	Q1	Q2	Q3	Q4	Q1	Q2	Q3	Q4	Q1	Q2	Q3	Q4	Q1	Q2	Q3	Q4	Q1	Q2	Q3	Q4		
S1590		Transportation Management Plan	14-Nov-19	11-Dec-19	10	S1530	S1680																								
S1600		Railroad Coordination	14-Nov-19	25-Dec-19	0	S1530	S1680																								
S1680		Evaluation Matrix (1st Draft)	26-Dec-19	01-Jan-20	0	S1490, S1360, S1	S1690, S1700, S1710																								
S1690		Construction Cost Estimates (LRE)	02-Jan-20	15-Jan-20	12	S1680	S1790																								
S1700		Right-of-Way Analysis	02-Jan-20	15-Jan-20	12	S1680	S1790																								
S1790		Evaluation Matrix (2nd Draft)	03-Feb-20	07-Feb-20	0	S1690, S1700, S1	36502, 29202, S1840																								
S1840		Risk Management	10-Feb-20	13-Mar-20	76	S1790	S1970																								
S1870		Refine Alternatives (based on public input)	03-Mar-20	30-Mar-20	0	S1860	S1890																								
S1890		Prepare 1st Draft Engineering Reports (Drainage, Utility)	31-Mar-20	11-May-20	0	S1860, 75700, S1	S1940																								
S1940		District Review - 1st Draft Engineering Reports	12-May-20	08-Jun-20	0	S1890	S1960																								
S1960		Comment Resolution & Update 1st Draft Engineering R	09-Jun-20	29-Jun-20	0	S1940	S1970																								
S1970		Value Engineering Study	30-Jun-20	06-Jul-20	0	S1960, S1840	33900																								
33900	339	Value Engineering Review	04-Aug-20	17-Aug-20	0	S1970	75900, S2010, S2020																								
75900	759	Typical Section Selection	18-Aug-20	18-Aug-20	28	33900	S2090																								
S2010		Prepare Design Variations and Exceptions	18-Aug-20	14-Sep-20	8	33900	71200																								
71200	712	Alternatives Evaluation Complete	15-Sep-20	15-Sep-20	8	S2010	S2090																								
S2090		District Review - 2nd Draft Engineering Reports (Draina	16-Sep-20	13-Oct-20	8	75900, 71200	S2120																								

ENVIRONMENTAL ANALYSIS

S1300		Environmental GIS Data Collection	26-Apr-19	16-May-19	129	S1210	S1520, S1680, S1340
S1340		Environmental GIS Desktop Analysis	17-May-19	27-Jun-19	129	S1300	S1680
S1710		Data Collection & CRAS	02-Jan-20	31-Jan-20	0	S1680	S1790, S1810
S1720		Data Collection & Noise Analysis	02-Jan-20	31-Jan-20	0	S1680, 75700	S1790, S1830
S1730		Data Collection & Contamination Screen Evaluation	02-Jan-20	31-Jan-20	0	S1680	S1790, S1820
S1740		Wetland Delineation and Evaluation	02-Jan-20	31-Jan-20	0	S1680	S1790, S1800
S1750		Data Collection & Wildlife Survey	02-Jan-20	31-Jan-20	0	S1680	S1790, S1800
S1760		Essential Fish Habitat Evaluation	02-Jan-20	31-Jan-20	0	S1680	S1790, S1800
S1800		Prepare 1st Draft NRE Report	03-Feb-20	03-Mar-20	68	S1740, S1750, S1	S1880
S1810		Prepare 1st Draft CRAS	03-Feb-20	03-Mar-20	68	S1710	S1880
S1820		Prepare 1st Draft CSER	03-Feb-20	03-Mar-20	68	S1730	S1880
S1830		Prepare 1st Draft NSR	03-Feb-20	03-Mar-20	68	S1720	S1880
S1880		District Review 1st Draft Environmental Reports (NRE, (04-Mar-20	31-Mar-20	68	S1800, S1810, S1	S1900
S1900		Comment Resolution & Update Draft Environmental R	01-Apr-20	21-Apr-20	68	S1880	S1910, 33300
S1910		OEM Review NRE	22-Apr-20	26-May-20	68	S1900	76100
33300	333	Finalize CRAS	22-Apr-20	05-May-20	93	S1900	76200
76200	762	Section 106 Effects Complete	06-May-20	06-May-20	93	33300	S2080
76100	761	Finalize NRE Report	27-May-20	09-Jun-20	68	S1910	S2020
S2020		Submit NRE to USFWS, NMFS, USACE, and FWS	18-Aug-20	18-Aug-20	19	33900, 76100	S2080
S2030		Prepare Conceptual Stage Relocation Plan	18-Aug-20	14-Sep-20	0	33900	S2080

FINAL ENGINEERING & SEIR DOCUMENTATION

S2080		Prepare Draft SEIR for Public Availability	15-Sep-20	12-Oct-20	0	33900, 70200, 761	71300
71300	713	District QC Draft Environmental Document	13-Oct-20	30-Oct-20	0	S2080	36600, S2120
S2150		Finalize Engineering & Environmental Reports	01-Dec-20	14-Dec-20	10	S2140	S2190
33500	335	Finalize PD&E NSR	01-Dec-20	07-Dec-20	0	S2140	S2180
76000	760	Finalize PER	01-Dec-20	14-Dec-20	10	S2140	S2190
S2180		Prepare FINAL SEIR	08-Dec-20	28-Dec-20	0	S2140, 33500	S2190
S2190		Submit FINAL SEIR to District Secretary	29-Dec-20	11-Jan-21	0	S2180, S2150, 76	73400
73400	734	SEIR Approved	14-Jan-21	14-Jan-21	0	S2190	26300, S2230



Actual Level of Effort	Remaining Work	Milestone
Actual Work	Critical Remaining Work	summary

Activity ID	PSM Code	Activity Name	Start	Finish	Total Float	Predecessors	Successors	2018				2019				2020				2021				2022				2023													
								Q3	Q4	Q1	Q2	Q3	Q4	Q1	Q2	Q3	Q4	Q1	Q2	Q3	Q4	Q1	Q2	Q3	Q4	Q1	Q2	Q3	Q4	Q1	Q2	Q3	Q4								
26300	263	Location Design Concept Acceptance	15-Jan-21	15-Jan-21	8	73400	73600																																		
73600	736	Location Design Concept Acceptance Public Notice	18-Jan-21	18-Jan-21	8	26300	S2230																																		
S2230		Pass the Torch Meeting	29-Jan-21	29-Jan-21	0	73400, 73600																																			