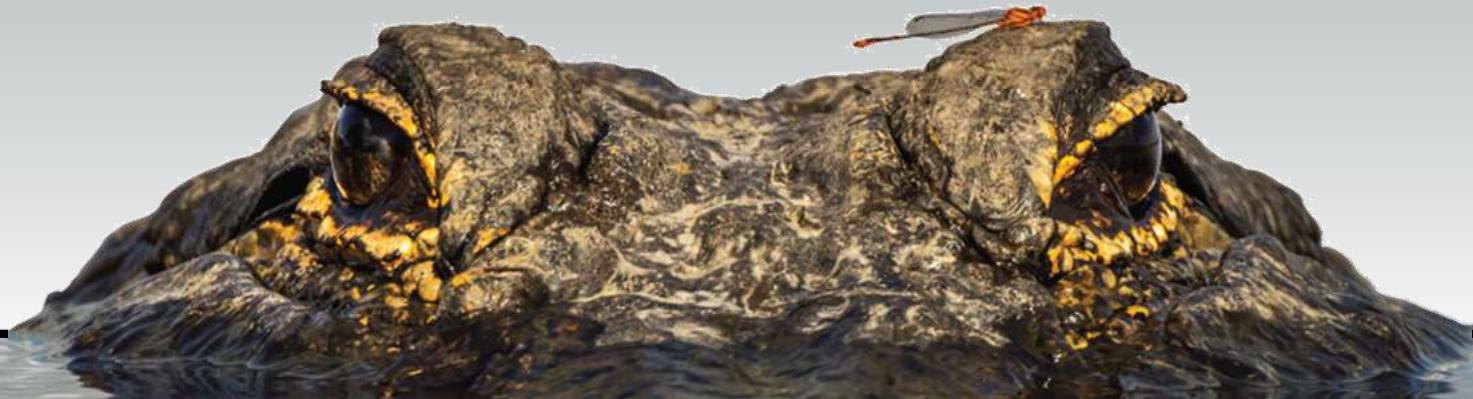


Welcome

TO THE FLORIDA DEPARTMENT OF TRANSPORTATION'S

ENVIRONMENTAL CELEBRATION



Welcome



Jared W. Perdue, P.E.

Secretary of the Florida Department of Transportation

Welcome



Will N. Watts, Jr., P.E.

*Assistant Secretary of Engineering and Operations
Florida Department of Transportation, Central Office*

Welcome



Stacy L. Miller, P.E.

District Secretary

Florida Department of Transportation, District Six



Photograph By: Katasha Cornwell

First Street Bridge Replacement Project

2022 Environmental Excellence Award





**View of the
Miami River
and
Downtown
Miami
Circa 1920**



**View of the
First Street
Bridge
In the 1920s**



**First Street
Bridge
before
construction**



**First Street
Bridge
before
construction**



**First Street
Bridge
near
completion**



**First Street
Bridge
near
completion**



**First Street
Bridge
Video**

Welcome



Richard Moss, P.E.

*Director of Transportation Development
Florida Department of Transportation, District Seven*



Photograph By: Katasha Cornwell

An aerial photograph of Old Tampa Bay, showing a large body of water with a sandy beach and a city in the background. In the foreground, a large, green, cartoonish manatee is shown in profile, looking towards the left. The manatee is superimposed on a grassy field.

OLD TAMPA BAY

FDOT WATER QUALITY IMPROVEMENT PROJECT

Impact of the 1930's Courtney Campbell Causeway to Old Tampa Bay



- Blocked the natural circulation patterns
- Reduced water quality
- Adversely impacted sea grasses and marine life



Project Purpose and Objectives

- ✓ Meet the Department's Mission
- ✓ Meet Storm Water Treatment Criteria and exceed it
- ✓ Enhance overall watershed water quality
- ✓ Reduces project footprints and impacts to communities
- ✓ Increase Seagrass Growth & Marine Life

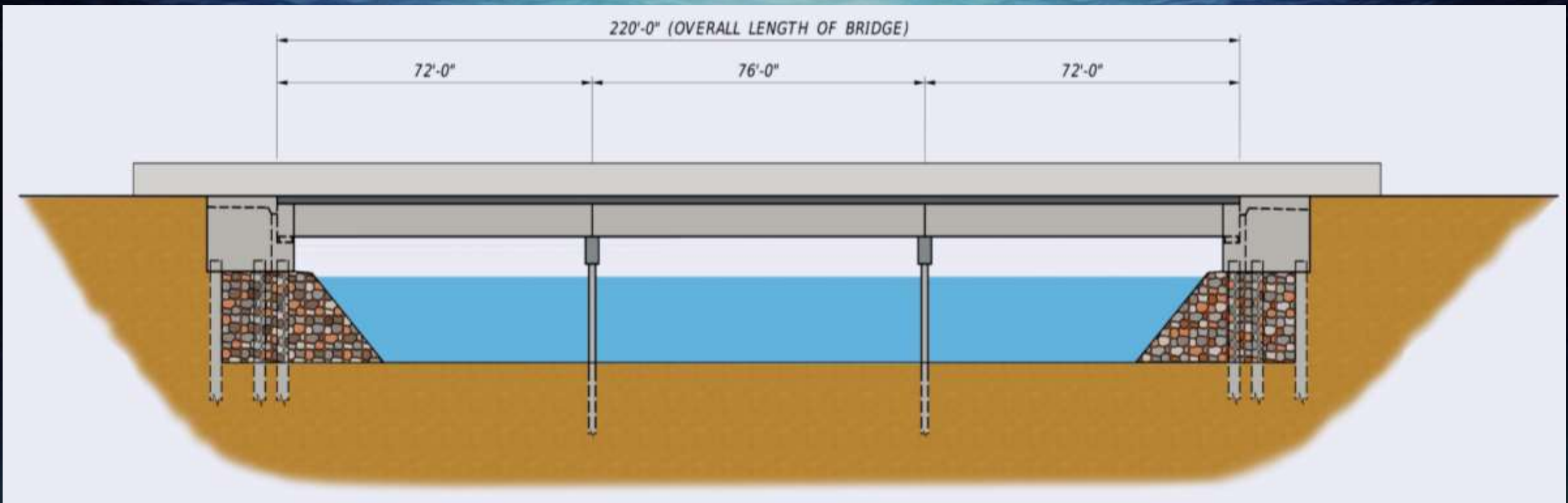
Pre-Construction

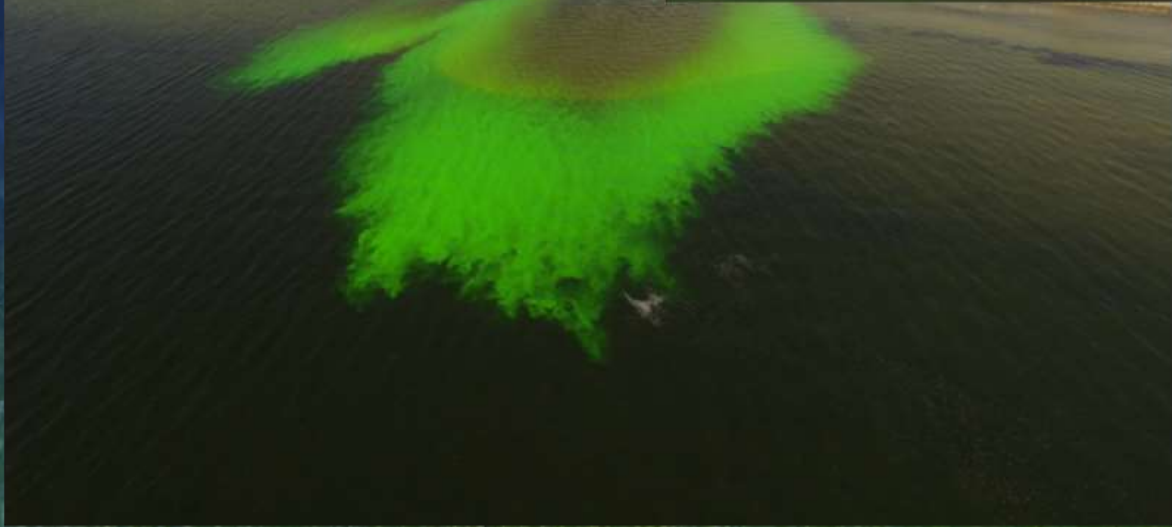


Late April 2019



Conceptual Bridge Channel Cross Section





Old Tampa Bay – Dye
Study 12/17/19

EARLY RESULTS

- **Dye-study demonstrated re-establishment of circulation in this section of Old Tampa Bay**
- **Dana Shores HOA reporting improvement in water clarity**
- **Manatees have been seen in the area**

EARLY RESULTS

- **SWFWMD has released the first 20% of mitigation credits**
 - **Water quality will continue to be monitored and additional credits are expected over the next 5 years**
- **Estimated \$50 million savings in future costs for storm water management (ROW, pond creation, seagrass mitigation, etc.)**

An aerial photograph of Tampa Bay, Florida, showing the city, airport, and surrounding greenery. In the foreground, a large, green, stylized manatee is superimposed on the water, looking towards the left. The text is overlaid on the left side of the image.

OLD TAMPA BAY

WATER QUALITY IMPROVEMENT PROJECT

Questions?

District 2

Type 1 CE Process Improvements



Aja Stoppe

Environmental Specialist

Florida Department of Transportation, District Two

District 2

Type 1 CE Process Improvements



This Photo by Unknown Author is licensed under [CC BY-ND](#)

District 2

Type 1 CE Process Improvements

CHALLENGE: Documenting high volumes of minor projects

	YES	NO
1. Will the action require a permit under the Clean Water Act (CWA) for the discharge of pollutants into navigable waters?	<input type="checkbox"/>	<input type="checkbox"/>
2. Will the action require a permit under the CWA for the discharge of pollutants into navigable waters from a point source?	<input type="checkbox"/>	<input type="checkbox"/>
3. Will the action require a permit under the CWA for the discharge of pollutants into navigable waters from a non-point source?	<input type="checkbox"/>	<input type="checkbox"/>
4. Will the action require a permit under the CWA for the discharge of pollutants into navigable waters from a point source?	<input type="checkbox"/>	<input type="checkbox"/>
5. Will the action require a permit under the CWA for the discharge of pollutants into navigable waters from a non-point source?	<input type="checkbox"/>	<input type="checkbox"/>
6. Will the action require a permit under the CWA for the discharge of pollutants into navigable waters from a point source?	<input type="checkbox"/>	<input type="checkbox"/>
7. Will the action require a permit under the CWA for the discharge of pollutants into navigable waters from a non-point source?	<input type="checkbox"/>	<input type="checkbox"/>
8. Will the action require a permit under the CWA for the discharge of pollutants into navigable waters from a point source?	<input type="checkbox"/>	<input type="checkbox"/>
9. Will the action require a permit under the CWA for the discharge of pollutants into navigable waters from a non-point source?	<input type="checkbox"/>	<input type="checkbox"/>
10. Will the action require a permit under the CWA for the discharge of pollutants into navigable waters from a point source?	<input type="checkbox"/>	<input type="checkbox"/>

Peter J. [Signature] Date: 3-10-2016

2022

District 2

Type 1 CE Process Improvements

CHALLENGE

- Documenting high volumes of minor projects

SOLUTION

- Suggested tweaks to the **T1CE Form** in SWEPT for process improvements including:
 - Linking to TIP/STIP online report
 - Use PCR and upload it to the T1CE
 - T1CE Section 4(f) and Section 7 improvements
 - Zipping attachments to provide single pdf to people outside of the SWEPT system
- Use the **EST AOI Tool** for supporting documentation and figures
- Maintain **QA/QC process** guidance
- Enhanced staff communication and involvement

The collage illustrates several key components of the process improvements:

- QA/QC Process - Q2 Type 1 Categorical Exclusions:** A document detailing the preparation and review steps for Type 1 CE projects, including setting up projects in SWEPT, preparing and attaching location maps, and reviewing concept plans and ERC design submissions.
- GIS Analysis Report:** A report for SR 115 Area of Interest, providing a detailed GIS analysis of the project area.
- SR 115 Confirmation Map:** A map showing the project location and various environmental features, with a legend for different types of areas and features.
- StateWide Environmental Project Tracker:** A screenshot of the SWEPT system showing a 'Type 1 Categorical Exclusion Checklist' with a 'Zip Tool' button highlighted, indicating the process of zipping attachments for easier distribution.

District 2

Type 1 CE Process Improvements

QUESTIONS?



District 3

The Big Bend Scenic Byway Signage Project: Thinking Outside the 4(f) Toolbox



Zena Riley-Taylor

*District Cultural Resources Coordinator
District Scenic Highways Coordinator
Florida Department of Transportation, District Three*



Matt Marino

*Senior Archaeologist
Transportation Sector Lead
Paleowest and FDOT District Three Support*

The Big Bend Scenic Byway Signage Project: Thinking Outside the 4(f) Toolbox

Zena S. Riley-Taylor, District 3 Cultural Resources and Scenic Highways Coordinator
Matt Marino, PaleoWest

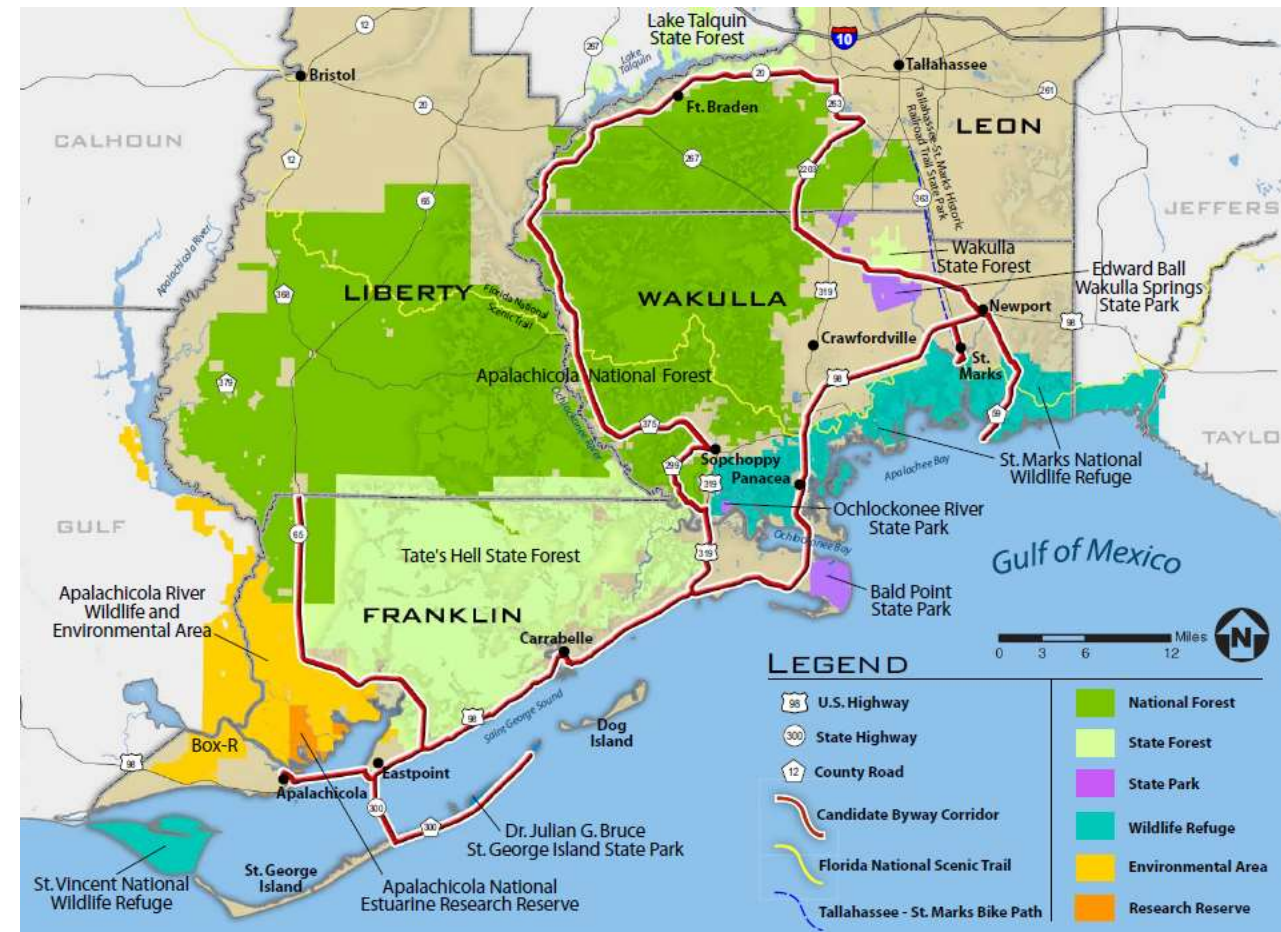
The Problem

- One project
- 32 potential Section 4(f) resources
- 10+ Officials with Jurisdiction
- Section 106 & Section 4(f) coordination
- How to produce a concise document for a complex project

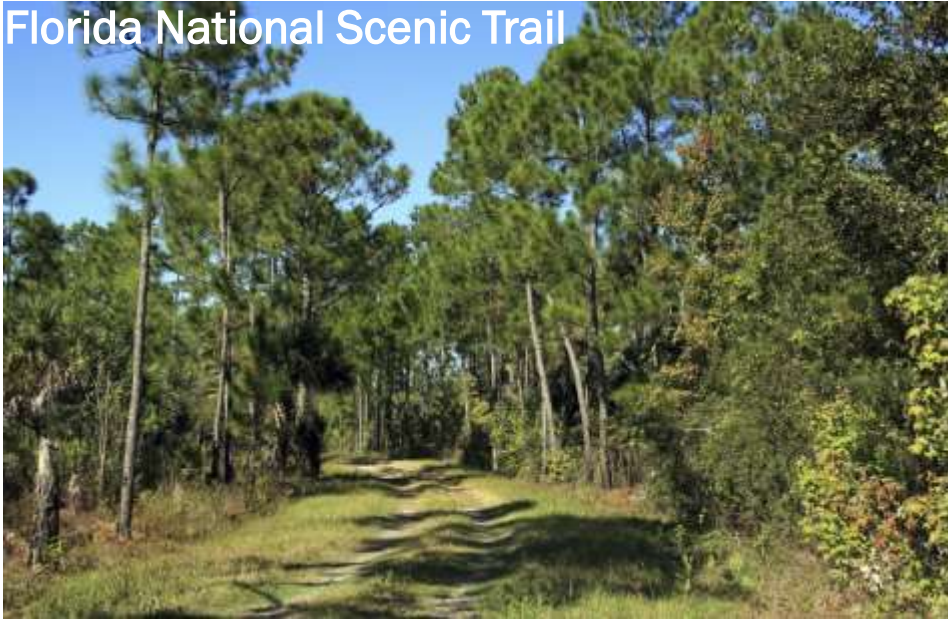


Project Description and Purpose–Big Bend Scenic Byway Wayfinding and Signage Plan

- Installation of signs, kiosks, and/or exhibits across 3 counties along the Big Bend Scenic Byway
- Create a sense of place for Byway
- Provide an interpretation of each resource
- Unifying elements across the Big Bend Scenic Byway



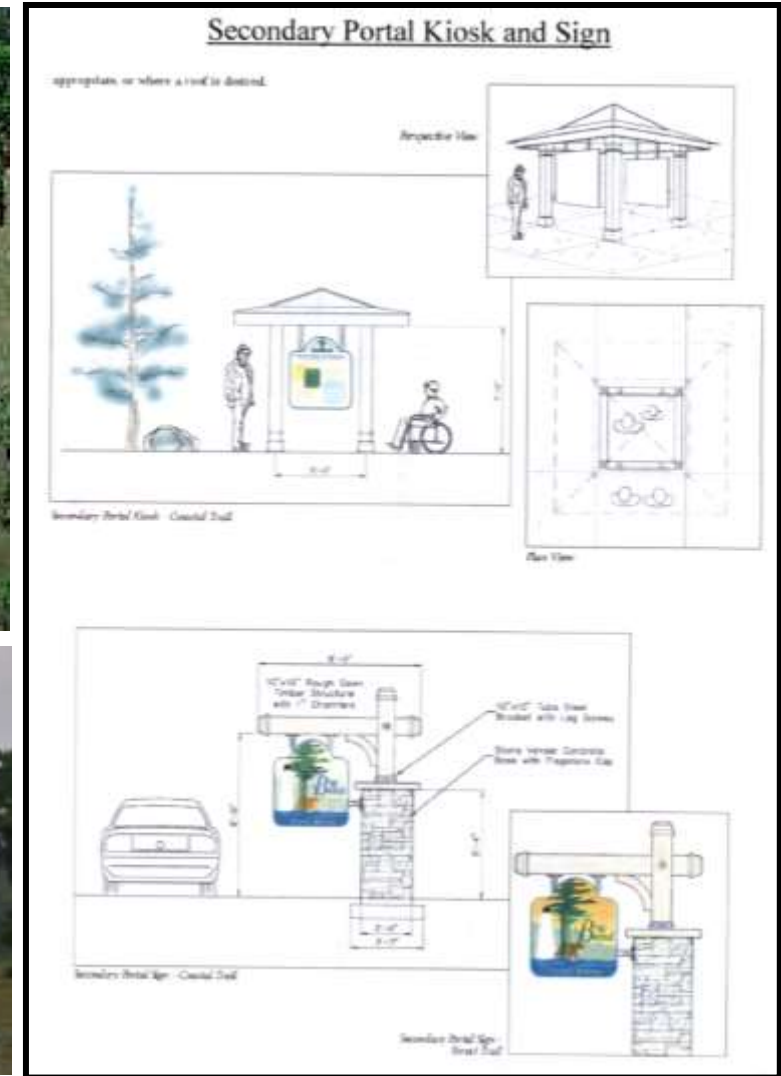
Florida National Scenic Trail



Fort Gadsden Historical Site

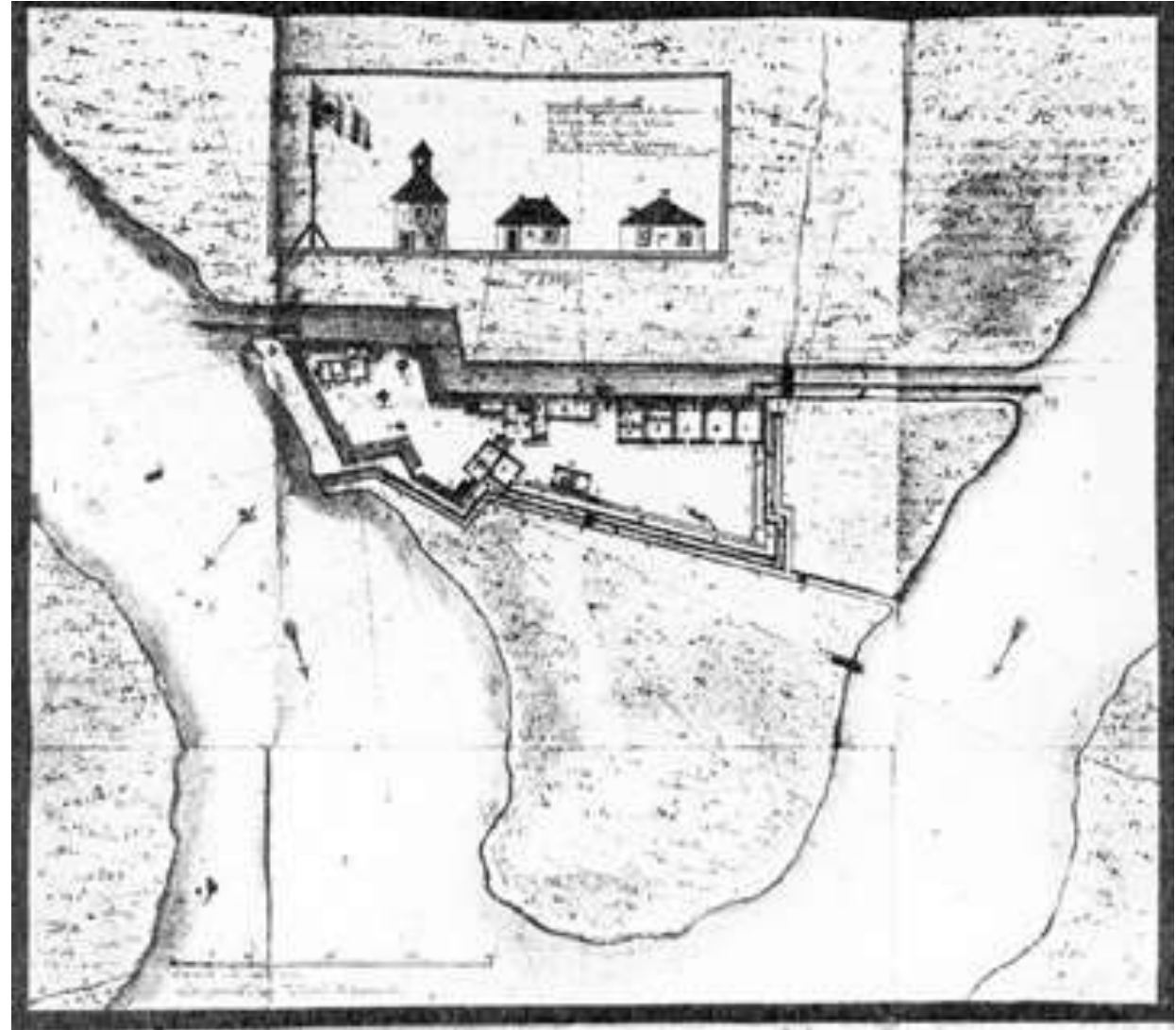


Mack Landing Recreation Area



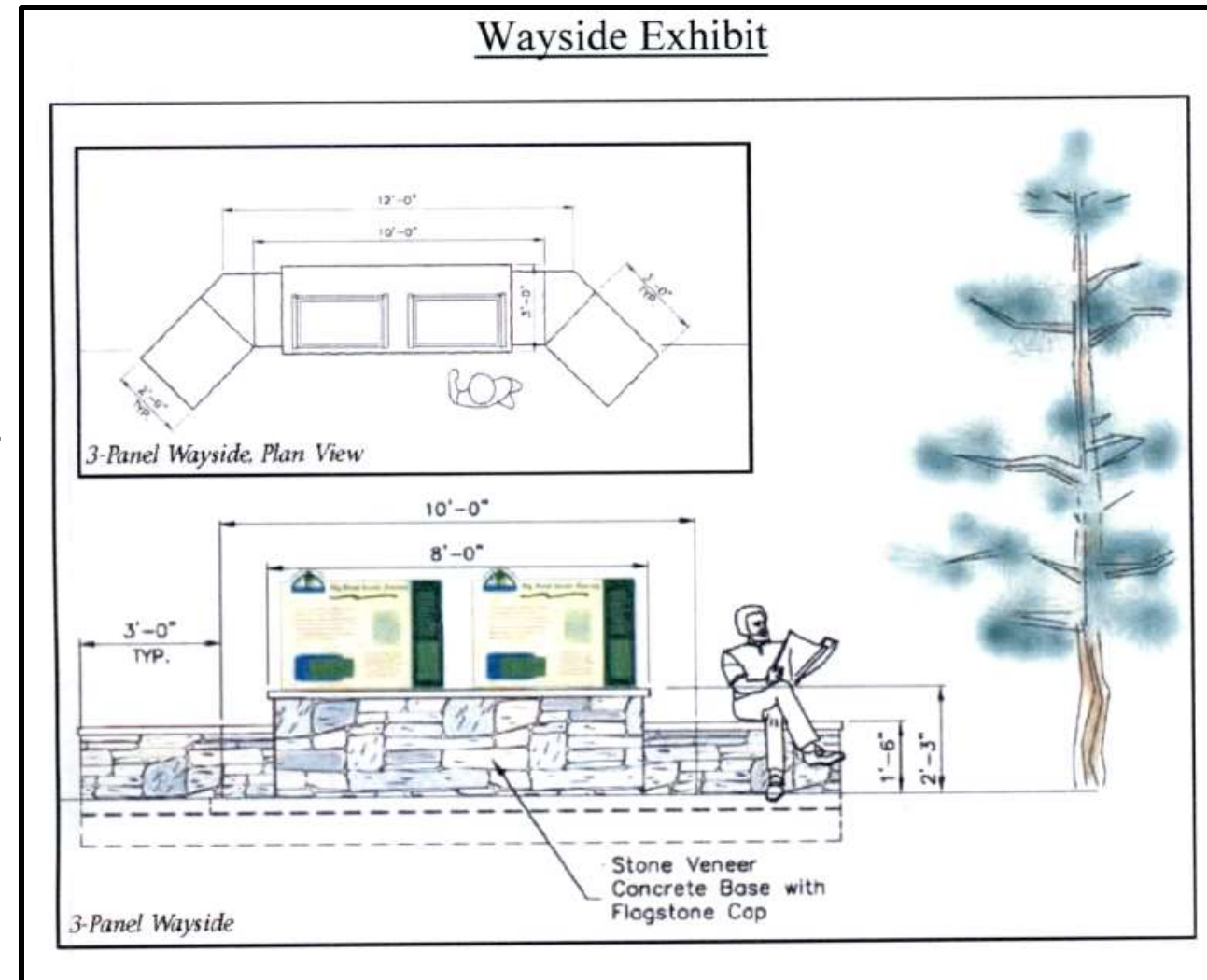
Section 106 and OWJ Coordination

- Exhibit 1 and 2 activities
- Resources in the APE
- Desktop Assessment
- Monitoring commitment



Section 4(f) Outcome

- Exception under 23 CFR 774.13(g)(1)
 - “The use of the Section 4(f) property is solely for the purpose of preserving or enhancing an activity, feature, or attribute that qualifies the property for Section 4(f) protection.”
 - Requires OWJ concurrence



Section 4(f) Tool Process

[Multiple Details](#) Determination Approved

Resource Name	Facility Type	Property Classification	Owner/Official with Jurisdiction	Recommended Outcome	OEM SME Action
Multiple	Multiple	<input checked="" type="checkbox"/> Park/Rec Area <input checked="" type="checkbox"/> Wildlife/Water Fowl Refuge <input checked="" type="checkbox"/> Historic Site <input type="checkbox"/> Multiple Use Facility	Multiple	Exception/Exi ▾	02-24-2022

Determination Date

Location Map(s):

Attach Maps

Make the Tool work for you!

- Section 4(f) Tool was designed to maximize efficiency
- Work with OEM staff to continue pursuing enhancements to the Tool
- This approach only works for applicability decisions
- Approval decisions will need to be prepared for each individual resource.

BIG BEND SCENIC BYWAY PLAN IMPLEMENTATION // 424369-4-58-01

Multiple

Facility Type: Multiple

Property Classification: Park/Rec Area, Wildlife/Water Fowl Refuge, Historic Site

Address and Coordinates:

Address:

Latitude: Longitude:

Description of Property:

This project is related to the implementation of the Big Bend Scenic Byway Wayfinding and Signage Plan through the installation of 32 signs/kiosks/exhibits throughout Wakulla, Franklin, and Leon Counties along the Big Bend Scenic Byway. Thirty (30) of the 32 signage and kiosk locations are collocated with Section 4(f) protected properties that are managed by multiple Officials With Jurisdiction (OWJ); however, no impacts are expected. See attachments for complete OWJ list and concurrences.

Owner/Official with Jurisdiction: Multiple

Recommended Outcome: Exception/Exemption

Exception/Exemption Type: Transportation enhancement activities, transportation alternatives projects, and mitigation activities that meet the conditions in 23 CFR 774.13(g)(1-2).

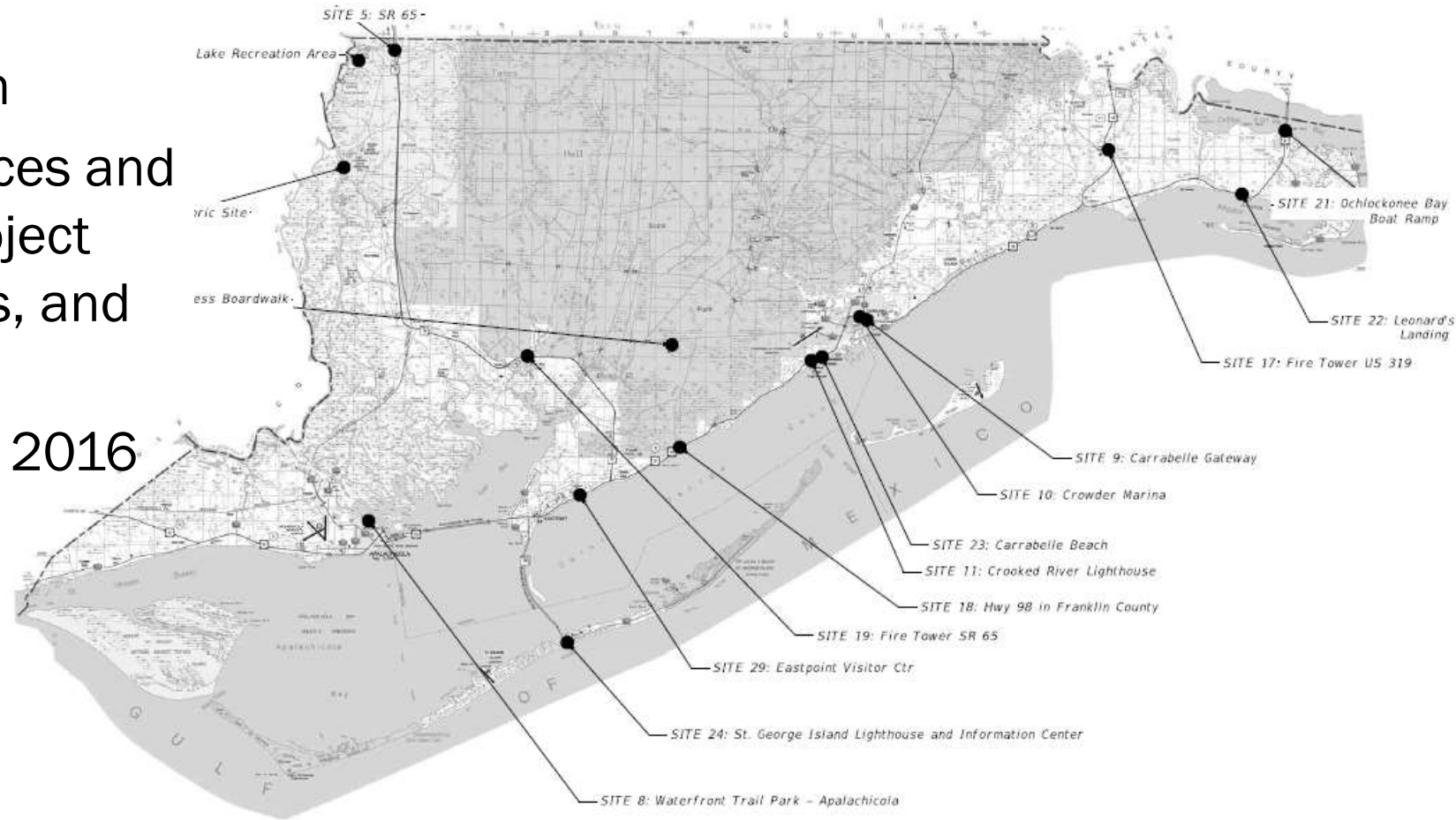
Exception/Exemption Justification:

The use of the Section 4(f) properties is solely for the purpose of preserving or enhancing an activity, feature, or attribute that qualify the properties for Section 4(f) protection, and the OWJ over the resources have agreed in writing with that determination.

OEM SME Determination Date: 02-24-2022

Coordinate towards the best solution!

- Collaborative effort between District Three Cultural Resources and Scenic Byway Coordinator, Project Manager, multiple consultants, and OEM
- Project began pre-SWEPT in 2016
- Revived in 2021



District 6

Environmental Impact Review Handbook



Steven C. James

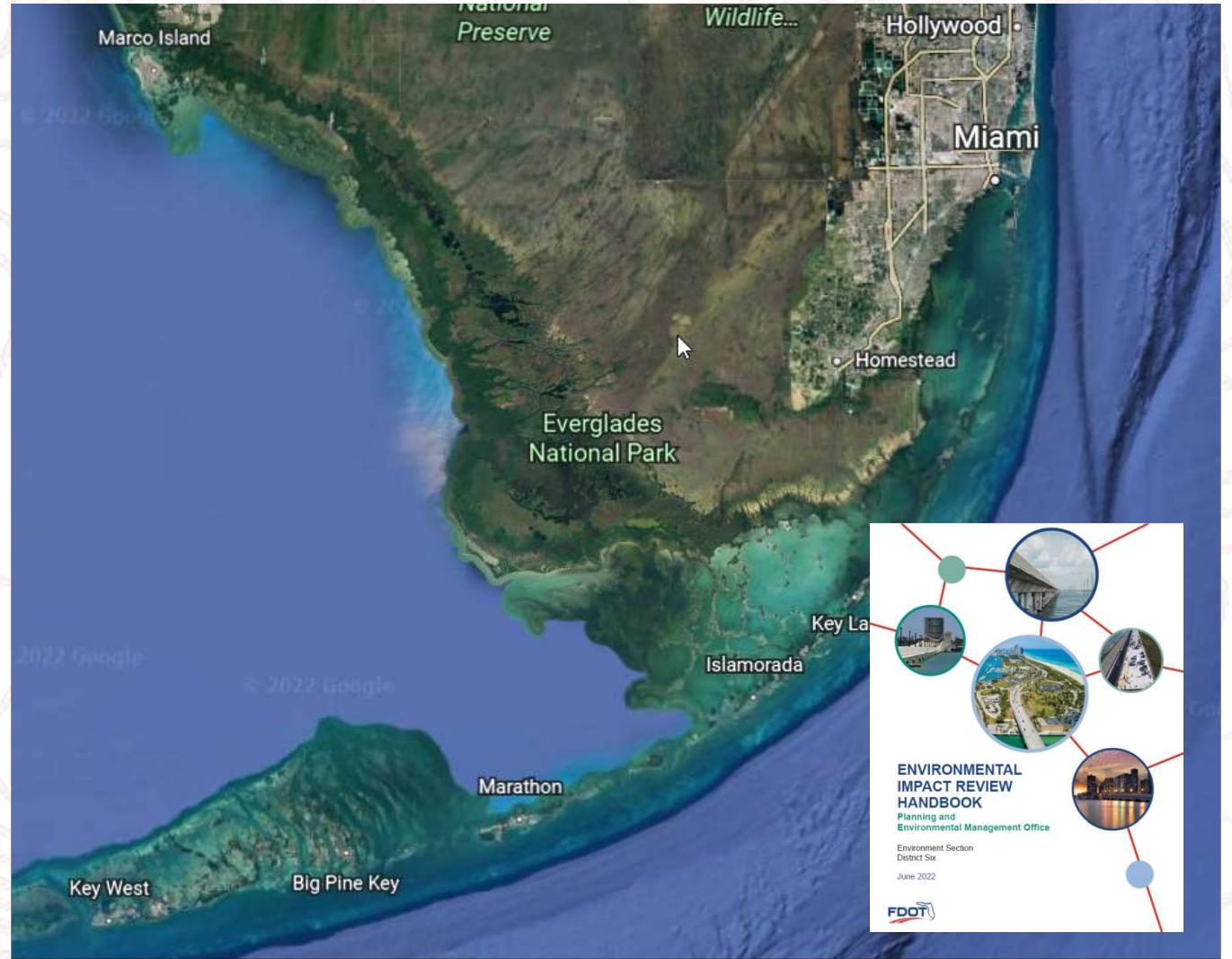
*District Environmental Manager
Planning and Environmental Management Office
Florida Department of Transportation, District Six*

District 6

Environmental Impact Review (EIR) Handbook

CHALLENGE

- District 6 is highly urbanized and uniquely situated between national parks
- High volume of Minor projects and several Major projects in environmentally sensitive areas
 - 30-40 Reviews per month
- Standardize reviews and responses by the large team of Environmental Impact Reviewers
- Disseminate the newest guidance and updates across the team of reviewers



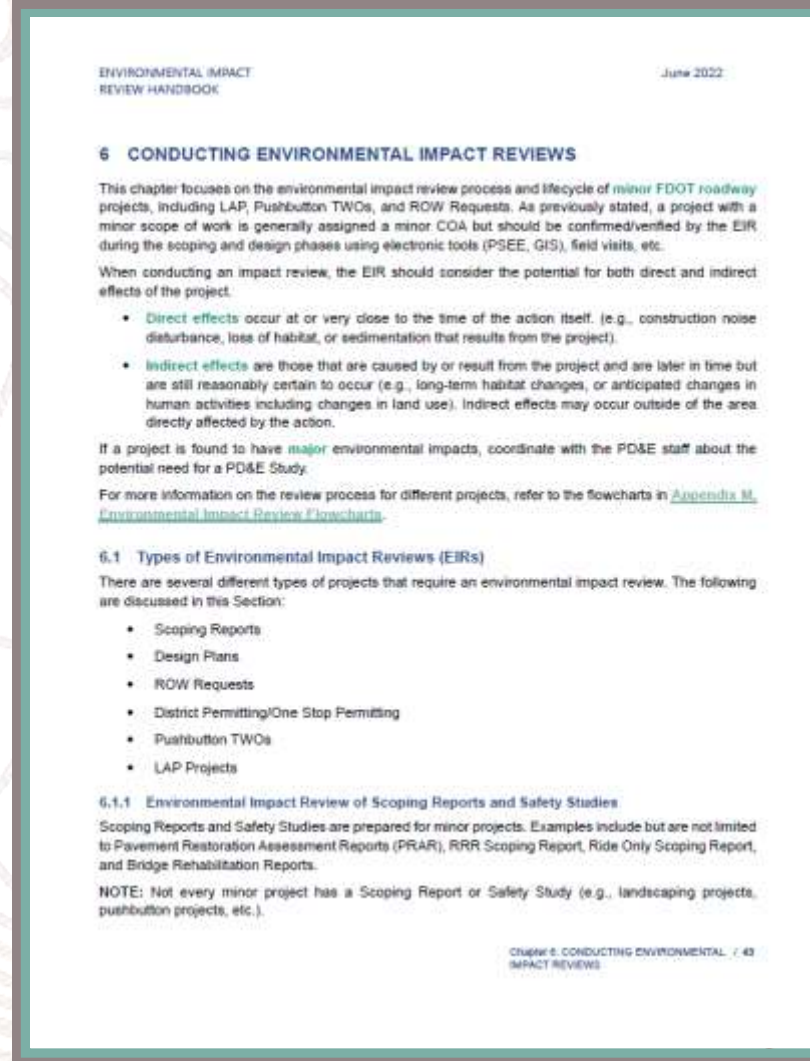
District 6

Environmental Impact Review (EIR) Handbook

SOLUTION

The Environmental Impact Review (EIR) Handbook

- Created to go hand-in-hand with the Project Development and Environment (PD&E) manual, the EIR handbook captures the process of minor project review and more.
- Standardization of how to implement rules, policies, and procedures for minor projects
- Standard text library including review comments and specific language for NEPA documentation
- Standard list of environmental activities and timelines embedded in project schedules
- Guidance on use of electronic tools like ProjectSuite, SWEPT, ERC, EST and GIS, etc.
- Living Document - Parking Lot established to capture updates/improvements that can be implemented annually



District 7

Natural Resource Innovations



Robin Rhinesmith

*District Environmental Manager
Florida Department of Transportation, District Seven*



Allison Conner

*Environmental Specialist IV
Florida Department of Transportation, District Seven*

District 7

Natural Resource Innovations

CHALLENGE

- Conducting separate protected species, wetland, and EFH assessments/reports is inefficient

SOLUTION

- Created **Wetland Evaluation and Biological Assessment Report (WEBAR)**, included wetlands, protected species, and habitat sections and was the precursor to the statewide implemented **Natural Resources Evaluation (NRE)**
- **Natural Resources Determination Worksheet (NRDW)** supplements the NRE and helps District staff determine the level of documentation and agency coordination required and whether a project qualifies as a Type 1 CE or Non-Major State Action.

The image shows a screenshot of the 'StateWide Environmental Project Tracker' web application. The interface includes a 'Project Documents' section with a list of document types: Floodplains, Natural Resources Evaluation (Wetlands, Species, and EFH), and Water Quality and Quantity. A blue oval highlights these three items. Below this, a 'Reports' section lists various report types, with 'Natural Resources Evaluation (Wetlands, Species, and EFH)' also highlighted by a blue oval. On the right side, there is a 'Correspondence' section with a subject line 'Free' and a 'CONFIDENTIAL Attorney Work Products' warning. Below that is an 'Approval History' table with columns for 'Document Type' and 'Action'. The table shows two entries: 'Type 1 CE Document' with 'Approved' and 'Type 2 CE Document' with 'Approved'. In the foreground, a 'Natural Resources Determination Worksheet' (NRDW) is displayed, featuring the FDOT logo and project details such as 'Site: 1071021', 'Project: 1071021', and 'County: Polk'. The worksheet contains several sections with text and checkboxes, including 'GENERAL INFORMATION', 'NATURAL RESOURCES DETERMINATION', and 'CONSTRUCTION AND MITIGATION'. A yellow arrow points from the 'SOLUTION' text to the NRDW document.

District 7

Natural Resource Innovations

FINAL WETLAND EVALUATION REPORT

I-75 Hillsborough and Pasco Counties Project Development & Environment Study

PD&E Study from South of Fowler Avenue, Hillsborough County to South of SR 56, Pasco County

WPI Segment Number: 408459-1
Federal Aid Project Number: 0751 1051

Reevaluation Study from South of SR 56 to CR 54, Pasco County

WPI Segment Number: 258736-1
Federal Aid Project Number: NH751(91)275

The proposed action involves improvements to I-75 from south of Fowler Avenue to County Road 54, a distance of approximately 13.9 miles.

Florida Department of Transportation
District Seven

TABLE OF CONTENTS

Section	Page
EXECUTIVE SUMMARY	1
1.0 INTRODUCTION	3
2.0 PROJECT DESCRIPTION	7
3.0 EXISTING ENVIRONMENTAL CONDITIONS	11
4.0 WETLANDS	11
4.1 METHODOLOGY	11
4.2 WETLAND TYPES WITHIN THE PROJECT STUDY AREA	11
4.2.1 Emergent Marshes	11
4.2.2 Scrub-Shrub Wetlands	11
4.2.3 Shrub-Wetland Emergent Wetlands	11
4.2.4 Forested Broad-Leaved Deciduous	11
4.2.5 Forested Needle-Leaved Deciduous	11
4.2.6 Unconsolidated Bottom Wetlands	11
4.2.7 Riverine Wetlands	11
4.3 POTENTIAL WETLAND EFFECTS	11
5.0 CONCLUSIONS	11
6.0 REFERENCES	11

FINAL ENDANGERED SPECIES TECHNICAL MEMORANDUM

I-75 Hillsborough and Pasco Counties Project Development & Environment Study

PD&E Study from South of Fowler Avenue, Hillsborough County to South of SR 56, Pasco County

WPI Segment Number: 408459-1
Federal Aid Project Number: 0751 1051

Reevaluation Study from South of SR 56 to CR 54, Pasco County

WPI Segment Number: 258736-1
Federal Aid Project Number: NH75-1(91)275

The proposed action involves improvements to I-75 from south of Fowler Avenue to County Road 54, a distance of approximately 13.9 miles.

Florida Department of Transportation
District Seven

TABLE OF CONTENTS

EXECUTIVE SUMMARY	1
1.0 INTRODUCTION	3
2.0 PROJECT DESCRIPTION	7
3.0 NATURAL COMMUNITIES	11
3.1 Wetland Plant Communities	11
3.2 Upland Plant Communities	11
3.3 Conservation Lands	11
4.0 GENERAL SPECIES SURVEYS	11
4.0 RESULTS	11
4.0 COMMITMENTS AND CONCLUSIONS	11
7.0 REFERENCES	11
LIST OF FIGURES	
Figure 1 Project Location Map	2
Figure 2 Conservation Lands within Project Corridor	10
Figure 3 Bird Resurvey Location Map	10
LIST OF TABLES	
Table 1 Protected Fauna Potentially Occurring Within the I-75 Study Area	1
Table 2 Protected Flora Potentially Occurring Within the I-75 Study Area	1

Natural Resources Evaluation



Florida Department of Transportation
District Seven

Replacement of the Northbound Howard Frankland Bridge (I-275/SR 93)

One Mile South of the Bridge to Half-mile North of the Bridge

Pinellas and Hillsborough Counties

Work Program Item Segment No. 422799-1

ETDM Project No. 12539

TABLE OF CONTENTS

SECTION 1 INTRODUCTION	1-1
1.1 FDOT Study Purpose	1-1
1.2 Project Description	1-1
1.3 Project Purpose and Need	1-1
1.4 Report Purpose	1-1
SECTION 2 EXISTING ENVIRONMENTAL CONDITIONS	2-1
2.1 Existing Land Use	2-1
2.2 Wetland and Wetland-Adjacent Areas	2-1
2.3 Wetlands	2-1
2.4 Wetland Communities	2-1
2.5 Wetlands and Surface Water Communities	2-1
2.6 Special Designations	2-1
2.7 Future Land Use	2-1
SECTION 3 PROTECTED SPECIES AND HABITAT	3-1
3.1 Methodology	3-1
3.2 Agency Coordination	3-1
3.3 General Condition Survey Results	3-1
3.4 Federally Listed Species	3-1
3.4.1 Wood Stork	3-1
3.4.2 West Indian Manatee	3-1
3.4.3 Florida Panther	3-1
3.4.4 Salt Spigone	3-1
3.4.5 Smooth-shinned Screech Owl	3-1
3.4.6 Sea Turtle	3-1
3.4.7 Red Knot	3-1
3.4.8 More Listed, Potentially Protected Species	3-1
3.5 State-Listed Species	3-1
3.6 Other-Listed Species	3-1
SECTION 4 WETLAND AND SURFACE WATER IMPACTS	4-1
4.1 Evaluation Approach	4-1
4.2 Impact Evaluation	4-1
4.3 Coordination with Permitting Agencies	4-1
SECTION 5 ESSENTIAL FISH HABITAT	5-1
5.1 Implications/General Act	5-1
5.2 ERM Assessment	5-1
5.3 Rating Conditions	5-1
5.4 Field Surveys	5-1

nal review, consultation, and other actions
ntal laws for this project are being, or have
13 U.S.C. §327 and a Memorandum of Und
red by the FHWA and FDOT.

5.0 Results	5-2
5.0 Analysis of Effects on ERM	5-2
5.0 Proposed Mitigation	5-2
SECTION 6 CONCLUSIONS AND COMMITMENTS	6-1
6.1 Wetlands	6-1
6.2 Protected Species & Habitat	6-1
6.3 Essential Fish Habitat	6-1
6.4 Commitments	6-1
SECTION 7 REFERENCES	7-1
APPENDICES	
Appendix A - Agency Coordination	7-1
Appendix B - Agency Marine Wildlife Watch Plans	7-1
Appendix C - Recommended Sub-Alternative for Bridge Resurvey Approaches	7-1
Appendix D - Project Photographs	7-1
Appendix E - Original Concept Plans and Progress Reports	7-1
LIST OF FIGURES AND TABLES	
Figure 1-1 Project Study Area Map	1-1
Figure 1-2 Existing Typical Section	1-1
Figure 1-3 Bridge Alignment Corridor	1-1
Figure 1-4 Recommended Bridge Build Alternative Typical Section	1-1
Figure 1-5 Existing Land Use Map	1-1
Figure 1-6 Documented Species Occurrence: Non-Avian Species	1-1
Figure 1-7 Bridge Replacement Alignment	1-1
TABLES	
Table 1-1 Potentially Occurring Listed Wildlife Species	1-1

District 7

Natural Resource Innovations

NRDW Disciplines

- Wetlands and Other Surface Waters
- Water Resources
- Floodplains
- Protected Species and Habitat
- Essential Fish Habitat
- Farmlands
- Recreational Areas and Protected Lands
- Nationwide Rivers Inventory

Successful Practices

- Consistency Provides Regulatory Compliance
- Comprehensive and Concise Format (5pp.)
- User Friendly
- Hyperlinks to PD&E Chapters
- Word Developer Controls and Quick Parts

FARMLANDS				
Farmland located within or adjacent to project corridor: <input checked="" type="checkbox"/> YES <input type="checkbox"/> NO <input type="checkbox"/> N/A <i>*If YES, complete Form NRCS-CPA-106 as specified in Section 6.2.5, and coordination with the NRCS.</i>				
FPPA Exclusions:		<input type="checkbox"/> PROJECT PLANNED & COMPLETED WITHOUT FEDERAL ASSISTANCE		
<input type="checkbox"/> SMALL AREA (<10 ACRES)	<input type="checkbox"/> PROJECT SITUATED ENTIRELY WITHIN AN URBANIZED AREA		<input type="checkbox"/> PROJECT CONSTRUCTED WITHIN EXISTING ROW ACQUIRED BEFORE 8/4/1984	
RECREATIONAL SECTION 4(f) RESOURCES				
<input checked="" type="checkbox"/> No Involvement <input type="checkbox"/> No Use <input type="checkbox"/> Exception/Exemption <input type="checkbox"/> de minimis				
Is the project receiving federal funding? <input type="checkbox"/> YES <input checked="" type="checkbox"/> NO				
Are there any recreational Section 4(f) properties as defined in 23 CFR 774.11 within or adjacent to the project area that have been determined to be significant? <input type="checkbox"/> YES <input checked="" type="checkbox"/> NO				
WATER RESOURCES				
Impacts to Water Quality: <input type="checkbox"/> SIGNIFICANT <input type="checkbox"/> MINOR <input checked="" type="checkbox"/> N/A <i>*See Part 1, Chapter 2, Class of Action Determination for Federal Projects and Part 1, Chapter 10, State, Local, or Privately Funded Project Delivery of the FDOT PD&E Manual for more guidance.</i>				
Summary of project activities which may impact water quality and any Best Management Practices included in the project (if applicable): See Project Description included on Page 1 and Comments below.				
Project located in an Aquatic Preserve and/or Outstanding Florida Waterbody: <input type="checkbox"/> YES <input checked="" type="checkbox"/> NO <i>* See Section 11.4.1 of the FDOT PD&E Manual for guidance.</i>				
PROTECTED SPECIES AND HABITAT				
Protected Species and/or Habitat Present within the Project Study Area: <input checked="" type="checkbox"/> YES <input type="checkbox"/> NO				
Species Name	Listing Status		Habitat	Effect Determination
	State	Federal		
REPTILES				
American crocodile (<i>Crocodylus acutus</i>)		Threatened	Saltwater habitats but can also be found in freshwater due to Florida's extensive surface water and canal systems	Effect Determination Choose a building block Click or tap to enter a value. No Effect MANLAA No Effect Anticipated No Adverse Effect Anticipated
Leatherback sea turtle (<i>Dermochelys coriacea</i>)		Endangered	marine	
Eastern indigo snake			pine flatwoods, hardwood forests, moist	

District 4

Customer Driven Results Require Community Engagement



Ann Broadwell

*Environmental Manager
Florida Department of Transportation, District Four*



THE FLORIDA DEPARTMENT OF TRANSPORTATION CELEBRATES

ENVIRONMENTAL

December 12 - 16, 2022

Week



District 4 PLEMO Customer Driven Results require Community Engagement

DECEMBER 14, 2022



District 4 Successful Community Engagement

Example 1 – PD&E Pre-Work, SW 10 St. COAT

**Example 2 – Jupiter Inlet Bridge Replacement and Section 106,
Cultural Resource Committee**

Community Oversight Advisory Team

- Outreach to the community to build consensus on:
 - Vision
 - Recommendations
- Provided 18 recommendations to help formulate this project's Purpose and Need
- Recommendations have been incorporated into the project's purpose and need and all recommendations are being evaluated





Community

Oversight

Advisory

Team



Broward MPO's Let's Talk Transportation

Closing the Gap



00:00 | 18:43

For years, the Sawgrass Expressway has been missing a segment to connect it from Florida's Turnpike to I-95. This link is more than just a road; it's a key piece of Broward's regional community and economic vision. Gail Bulfin of the Greater Fort Lauderdale Alliance, a regional economic development organization, and Mayor Michael Udine of Broward County talk to us about community engagement that got the project moving again and what will be needed for future phases and other key regional transportation projects in Broward.



Successful Community Engagement

Example 2 – Jupiter Inlet Bridge Replacement and Section 106, Cultural Resource Committee





Cultural Resource Committee Process as Public Engagement

This process was developed so that FDOT could demonstrate good faith efforts in the event an adverse impact to a historically significant structure is being considered as part of the transportation improvement project

Cultural Resource Committee process as Public Engagement

- **Identify historic & archaeological resources during ETDM screening;**
- **Assess the risk of impacting significant resources;**
- **Begin identifying stakeholders for CRC;**
- **Ask for C220 funds early in PD&E;**
- **Document concerns and incorporate solutions into commitments/MOA.**

The bridge is eligible for listing in the NR (therefore adverse effect);

Primary concerns are for the NR-listed Jupiter Inlet Lighthouse and the NR-eligible WWII Married Mens' Housing structure.

Structural analysis and vibration analysis of both structures during PD&E led to commitments/MOA.

In addition, the Loxahatchee River Historical Society was concerned about the loss of revenue to the lighthouse & museum (which could have resulted in an adverse impact)



Jupiter Inlet Bridge Replacement CRC

CRC members:

- **Town of Jupiter**
- **Palm Beach County**
- **Lox. River Historical Society**
- **BLM**
- **USCG**
- **OEM**
- **DHR**
- **SHPO**

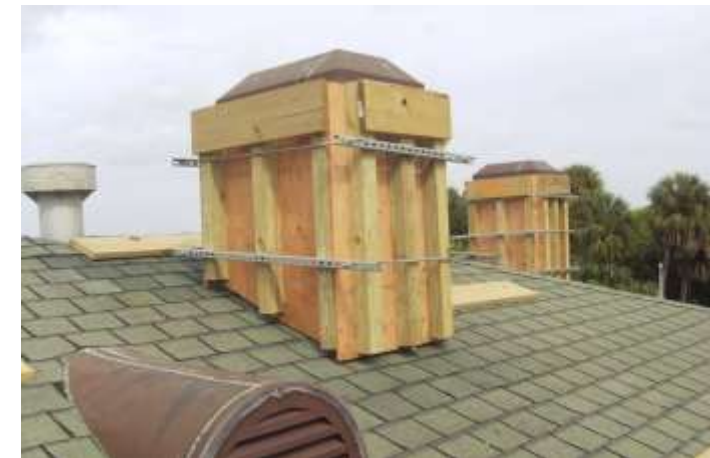


Jupiter Inlet Bridge Replacement CRC: MOA and Commitments



Jupiter Inlet Bridge Replacement CRC: MOA and Commitments

- The MOA and commitments led to “no adverse effect” determination for the Housing Quarters, Lighthouse and midden.
- Reimburse the Town of Jupiter for the cost of relocating the operations of the Museum and Gift shop during construction.
- Vibration monitoring for the Housing Quarters and Lighthouse; pre- and post construction inspections.
- Structural supports for the chimneys in the Housing Quarters
- Reimburse BLM for the cost of wrapping the Lighthouse Fresnel Lens during the installation of piles or any other vibratory activities.
- Archeological monitoring of the midden during construction.
- **Total cost - \$1,000,000.00**



District 1

Internal Communication on Projects



Jonathon Bennett

Environmental Project Manager

Florida Department of Transportation, District One



District One Environmental Management Office

*Environmental Celebration
Internal Communications
on Projects*

December 14, 2022



Internal Communication on Projects

Challenge

- Efficiently appraise staff and other internal departments of project updates

Solution

- Develop a series of LIVE Excel Trackers to shared with staff, management, and consultant support
 - Environmental, Engineering, Re-evaluation, Minor Projects, Cultural Resources, and Emergency Project Trackers
- Access is controlled and customizable with read/edit only features
- Tracker information helps inform PD&E Production Slides that act as project summaries for management staff

Major PD&E Project Tracker

Excel Project Tracker ENV. - Saved

Search (Alt + Q)

File Home Insert Draw Page Layout Formulas Data Review View Help Table Design Editing

Share Comments Catch up

Undo Clipboard Font Alignment Number Styles Cells Tables Analyze Data

A20 436680-1

FPID #	ETDM #	Project Name	COA	PM	EPM	Consulta	CAP	Funds	Planning Consist	Co/Pa Agen	Notes	WS Date	PH Date
436672-1	14333	US 98 fr W Daughtry Rd to N of W Socrum Rd	CE2 - Accepted DEM Concur COA Change to CE1 06/23/22	David Turley	Jonathon Bennett	American Structurepo Int, Inc. Erw. PGA CR SEARCH	20	Fed	7/14/22: Start PC quarterly checks once schedule is updated	PA - USACE no longer Email in ETDM	Exe Date - Mar Q3 ETDM SWAT Form A complete GO - Can hold/slow with no loss of environmental work Project slowed, dates do not reflect delay ****Holding on Envi work until traffic is sorted out Will be updated when SA is finalized		xx/xx/xxxx
436673-1	14334	US 98 - Socrum Loop to CR 54	CE2	David Turley	Jonathon Bennett	AIM Erw. FDA	21	Federal	6/16/22: Submitted to the PM for approval. ARPA Construction Funds available for 2023: PC	PA - USACE No long	06/14/2022 DEM Concur with COA Change to CE1 Moving smoothly		3/31/2022
436676-1	14382	SR 789 (Longboat Key) N Shore Rd to Coquina Park Ent.	EA	Patrick Bateman	Lauren Peters	Scalar Erw. ESA CR ACI	20		5/15/22: Check again in Q1 FY 2023, Project not consistent future phases not yet	CA - USCG PA - USACE	Exe Date - Feb Q3 3/5/19 PB & LP conducting field review ETDM SWAT Form A complete SLOW -Needs PI in season, No P/C - CST in 2032	12/13/2022	1/10/2024
436680-1	14384	SR 789 (Little Ringling) fm Bird Key to Sarasota Harbor W.	CE2	Patrick Bateman	Jonathon Bennett	H&H Erw. RK&K	20		5/25/22: Design is funded. Q4 Check completed	CA - USCG PA - USACE	Exe Date - Oct Q2 Tribal Letter Received - In SharePoint Can hold/slow with minimal loss of environmental work sea	4/5/2022	Est 04/2023
436926-1		Pine Island Rd Trail fm Stringfellow to Veterans Memorial Pkwy	Feasibility Study	Steven Andrews	Lauren Peters	Pennoni	21		N/A		20-12-15 Internal Project Kick Off SLOW		
436928-1	14380	Bumt Store Rd, Van Buren Pkwy to Charlotte C/L	CE2 - Anticipated	Steven Andrews	Jeff James	Scalar (Kristin)	20	Federal	Future coordination with Charlotte & Lee County regarding future phases to occur: TBD	PA - USACE	Exe Date - Jan Q3 need ROW or rebuild in existing ROW? ETDM - SWAT Form A prepared 2/25/20 Kick-off mtg 3/31/20-Kick-off mtg w/ Lee Co. 6/1/20-Comment rec'd fr Brian Barnett fr FWC re: hydrological	8/30/2022	4/17/2023

Major Inactive Complete PD&E +

Calculation Mode: Automatic Workbook Statistics Average: 19686.66667 Count: 21 Sum: 59069 - 100% +

Major PD&E Project Tracker

FPID #	ETDM #	Project Name	COA	PM		
EPM	Consulta	CAP	Funds	Planning Consistency	Co/Pa Agen	Notes
WS Date	PH Date	Document				

Excel Table Header Topics include:

- Financial Project Identification Number
- ETDM
- Project Name
- Class of Action
- Project Manager
- Environmental Project Manager
- Consultant
- Consultant Acquisition Plan Year
- Funding
- Planning Consistency
- Cooperating/Participating Agencies

- Notes
- Workshop Date
- Public Hearing Date
- Document Type
- Cultural Resource Assessment Survey
- Natural Resource Evaluation
- Noise Study Report
- Section 4(f)
- Contamination Screening Evaluation Report
- Conceptual Stage Relocation Report
- Water Quality Impact Evaluation
- And more...

Engineering Tracker

Excel Project Tracker_ENG - Saved - Search (Alt + Q)

File Home Insert Draw Page Layout Formulas Data Review View Help Viewing Share Comments Catch up

	A	B	C	D	E	F	G	H	I	J	K	L	M	N	O	P	Q	R	S	T
	FPID #	Project Name	PM	EPM	Consultant	COA	NTP	Contract Services E Date	Design Fund	To OEM (ER)	To OEM (SWEPT)	Estimated LD	Pass the Torch	SIS	Planning Consistency	MPO/TR	Kickoff/Corridor Meeting	Workshop	Public Hearing	PI
36			Jester																	
37	442518-2, 442518-3	I-75 Managed Lanes Sarasota/Manatee	Nicole Harris (CM - Joshua Jester)	IPM EPM	HDR	TBD	19		TBA			TBD		Yes	TBA - after feasibility	Sara/Mana	Preview posted on website 4/9/2020	TBD	TBD	Nov
38	442519-2, 442519-3	I-75 Managed Lanes Lee/Collier	Nicole Harris (CM - Joshua Jester)	IPM EPM	Lochner	TBD	19		TBA			TBD		Yes	TBA - after feasibility	Lee/Collier	Preview posted on website 4/9/2020	TBD	TBD	Nov
39	444321-1	US 41 @ Bonita Beach Rd	Patrick Bateman	Jonathon Bennett	Kittelson	CE2	10/12/2019	5/7/2022	TBA	Est 5/5/2023	Est 7/11/23	10/12/2023		No	Funding (Jen)	Lee	Kickoff Newsletter sent 4/23/2020	Est early 2022 Seasonal	Est early 2023 Seasonal	
40	444843-1	Bradenton-Palmetto Connector	Michelle Rutishauser (CM - Steven Andrews)	Lauren Peters	TranSystems	ACE/EA	5/26/2020	5/25/2023	TBA	2023	2023	2024	TBA	No	Funding (Jen)	Sara/Mana	Late 2020	TBD	TBD	Tent - July
41	444857-1	Palmetto Trails Network	Michelle Rutishauser (CM - Patrick Bateman)	Gordon Mullen	Landis Evans	CE2	12/27/2019	12/26/2022	TBA	April 2022	June 2022	July 2022	TBA	No	Funding (Jen)	Sara/Mana	N/A	charettes instead of workshop	TBD	In progress list limits b updated
42	444937-1	SR 78 from I-75 to SR 31	Melody Matter (CM - Steven Andrews)	Lauren Peters	Osiris 9	CE2	11/15/2019	11/15/2022	TBA	TBD	TBD	TBD	TBD	No	Funding (Jen)	Lee	Kickoff Newsletter Sept 2020	TBD	TBD	???
43	445296-1	I-75 @ Pine Ridge Road	Nicole Harris (CM - Joshua Jester)	IPM EPM	Lochner	CE1	20		20	Jun-21		Sep-21			Coord with Jen	Collier	NA	Dec-21		
44			Jennifer	Jonathon																

Workbook Statistics 100%

Re-evaluation Project Tracker

Excel Reevaluation Tracking - Saved

Search (Alt + Q)

File Home Insert Draw Page Layout Formulas Data Review View Help Editing

Clipboard Font Alignment Number Styles Cells Settings Analysis

Share Comments Catch up

B6 F-75 at SR 884 (Colonial Blvd)

FPID	Project Description	County	FDOT Project Manager	Design Consultant	Design/Build	State or Federal Funding	2.0 in Design Sco	Reeval to be Prepare By	Reeval Type	Target Date	Project on RW Micro Hit List
417878-3	SR 29 from F Road to N. of Cowboy Way	Hendry	Chris Speese (Atkins)	WSP	No	Federal	Yes	AIM (B. Finck/M. Adams)	Construction	11/14/2024	Yes
417878-4	SR 29 from SR 82 to Hendry C/L	Collier	Chris Speese (Atkins)	Inwood	No	Federal	Yes	Inwood (D. Dangel/J. Houck) w/ Atkins/A. Garcia review	Construction	1/24/2024	Yes
417878-8	SR 29 from Cowboy Way to Whidden Rd	Collier	David Agacinski	TLP	No	Federal	Yes	Inwood	Design Change	2/1/2023	
417878-8	SR 29 from Cowboy Way to Whidden Rd	Collier	David Agacinski	TLP	No	Federal	Yes	Inwood	ROW	4/1/2024	

Projects Priority Projects Contacts Completed Projects 201277-5 I-75 at Bee Ridge 197562-4 US 98 201277-3 I-75 at Clark Rd 434886-2 Singletary Bridge 419243-2 US 27 425843-2 I-75

Calculation Mode: Automatic Workbook Statistics 100%

Minor Project Tracker

Excel Minor Project Tracker ENV - Saved

Search (Alt + Q)

File Home Insert Draw Page Layout Formulas Data Review View Help Table Design Editing

Clipboard Font Alignment Number Conditional Formatting Styles Cells Editing

Share Comments Catch up

M172 PCR-RRR, NB ramp. Lauren advised plan note to stop work and contact EMO if any cultural resources artifacts/burials are found during construction.

FPID Number	Project Name	PM	EPM	County	Consultant	Funds	268	204	Phase II submittal date	Phase IV submittal date	EDW (Due/Received)	Status/Comments	Date Cert Needed/Provided	Species-Specific Needed?
449646-1	US 41 FROM 53RD AVE TO CORTEZ RD			Manatee		F						Safety improvements in ERC as PCR		
449653-1	US 41 FROM MAGELLAN DR TO 63RD AVE	Kaylean Mueller		Manatee		F		pending				safety modification in ERC as PCR		
449655-1	SR 544 AT DERBY AVE			Polk		F		10/10/2024					needed 9/26/24	
449656-1	US 441 AT 28TH ST	Jeff Mednick		Okeechobee		F		4/12/2024	3/31/23 scheduled	10/27/23 scheduled		safety project	needed 3/29/24	
449659-1	SR 25 & SR 700 (US 27 & US 98) at Various Locations (Safety Median Improvements)			Polk								PCR; median modifications- work appears to only be in roadway medians		no
449720-1	SIGNAL AND PED FACILITY INSTALLATIONS ON US 41 AT I-275	Josh Jester? Leah		Manatee		F		Ad April 2022			received 1/20/22	will be Design Build, IOAR approval needed before cert. 8 policy points need to be addressed.	Type 1 CE signed 3/8/22	
449980-1	LANDSCAPE SR 684 (CORTEZ RD	Darryl Richard		Manatee		S		11/17/2023	1/5/2023 scheduled	7/6/2023 scheduled		landscaping	needed 11/3/23	
450524-1	SR 45 (US 41) FROM LEE COUNTY LINE TO VANDERBILT BEACH RD	Darryl Richard	Brett	Collier	McGee & Assoc.	S		8/30/2022				BEAUTIFICATION GRANT AGREEMENT WITH COLLIER COUNTY; JPA		no
450526-1	SR 84 FROM SANTA BARBARA BLVD TO CR 951	Darryl Richard	Katherine	Collier	McGee & Assoc.			8/30/2022				BEAUTIFICATION GRANT AGREEMENT WITH COLLIER COUNTY; JPA		no
451019-1	SR 64 FROM W OF KIBLER RANCH RD TO W OF WINGATE RD			Manatee								RRR; PCR in ERC		
451020-1	SR 64 FROM CR 675 TO W OF KIBLER RANCH ROAD			Manatee								RRR; PCR in ERC		

Minor LAP Complete Minor In House Minor DB TWOs Rail Misc. Completed LAP Staging Clearances RW leases and disposals pre and during CST needs +

Calculation Mode: Automatic Workbook Statistics 100%

Minor Project Tracker

FPID Number	Project Name	PM	EPM	County	Consultant	Funds	268	204	Phase II submittal date	Phase IV submittal date
449646-1	US 41 FROM 53RD AVE TO CORTEZ RD			Manatee		F				
449653-1	US 41 FROM MAGELLAN DR TO 63RD AVE	Kayleen Mueller		Manatee		F		pending		
449655-1	SR 544 AT DERBY AVE			Polk		F		10/10/2024		
449656-1	US 441 AT 28TH ST	Jeff Mednick		Okeechobee		F		4/12/2024	3/31/23 scheduled	10/27/23 scheduled
449659-1	SR 25 & SR 700 (US 27 & US 98) at Various Locations (Safety Median Improvements)			Polk						
449720-1	SIGNAL AND PED FACILITY INSTALLATIONS ON US 41 AT I-275	Josh Jester?	Leah	Manatee		F		Ad April 2022		
449980-1	LANDSCAPE SR 684 (CORTEZ RD	Darryl Richard		Manatee		S		11/17/2023	1/5/2023 scheduled	7/6/2023 scheduled
450524-1	SR 45 (US 41) FROM LEE COUNTY LINE TO VANDERBILT BEACH RD	Darryl Richard	Brett	Collier	McGee & Assoc.	S			8/30/2022	
450526-1	SR 84 FROM SANTA BARBARA BLVD TO CR 951	Darryl Richard	Katherine	Collier	McGee & Assoc.				8/30/2022	
451019-1	SR 64 FROM W OF KIBLER RANCH RD TO W OF WINGATE RD			Manatee						
451020-1	SR 64 FROM CR 675 TO W OF KIBLER RANCH ROAD			Manatee						

Minor Project Tracker

- In-house
- Consultant
- Local Area Projects
- Design-Build Pushbutton
- Rail
- Miscellaneous
- Staging Area
- Right-of-way Lease and Disposal
- Pre and During Construction Needs

Cultural Resource Project Tracker

Excel Cultural Resource Qtr. Mtg. Tracker - Saved

Search (Alt + Q)

File Home Insert Draw Page Layout Formulas Data Review View Help Editing

Clipboard Font Alignment Number Settings Analysis

US 17/92 Hinson Ave from 1st St to 17th St

County	FPID	Project Type (PD&E, Major Design-Reeval, Minor Design)	Project Name	Project Scope (And anticipated CR issues)	Funding Type (State/Federal)	FDOT PM/ FDOT Env. PM	Consultant (Prime/ CR)	Phase II Date (Design)	Reeval Type and Target Date (Design)	ROW Clear Date (Design)	Plans to Specs Date (Design)	Target Date Submittal to SHPO / (or Actual Date)	Target Date for SHPO Concurrence (or Actual Date)	CRAS Status	\$106 CSR Status	MOA Status	Comments/Status	CR M
Hardee	435830-1	PD&E/Design (overlapping)	CR 664 Bridge (No. 060034) over Little Payne Creek	Luten Bridge Co.; waterway constraints; also Programmatic Section 4(f); Evaluate 2 alternatives (one replaces the bridge entirely, the second alternative re-aligns the road and constructs a new bridge to leave the old bridge in place)	Federal	Patrick Bateman/ Jonathon Bennett	FDOT (Inhouse)/ACI						(10/1/2020)	Completed with SHPO concurrence (10/1/2020)	Still in Progress		Creek (Bridge No. 064069; BHR375) NRHP-eligible by SHPO 2000 (5/23/20 notes: similar to John Singletary Bridge process); (9/1/20 notes: D1 reviewed draft CRAS, one-lane concrete arch deck Luten bridge)	Report. Th Criteria A c to differen like to acq is interest Proposed American signage pl
Polk	431351-1	PD&E	US 17/92 Hinson Ave from 1st St to 17th St	Correction of design deficiencies and potential widening from 2 to 4 lanes. NRHP listed or eligible historic district (Downtown Haines City Commercial), buildings, bridge (Hinson Ave Overpass), and railroad crossing.	Federal	Lauren Peters	AECOM/ACI							CRAS for mainline and ponds in progress; anticipate submittal to SHPO in 2-3 months			Evaluating 3 alternatives.	Jennifer M project. Pr lanes to fo consider: alternative of the hist. road. Seco lanes arou has some j historic fe: the impact should be

Quarterly Meeting Agenda-Notes General CR discussion MOA Status

Calculation Mode: Automatic Workbook Statistics 100%

Emergency Project Tracker

Excel Emergency_Repair_Tracker_ENV - Saved

Search (Alt + Q)

File Home Insert Draw Page Layout Formulas Data Review View Help Table Design Editing

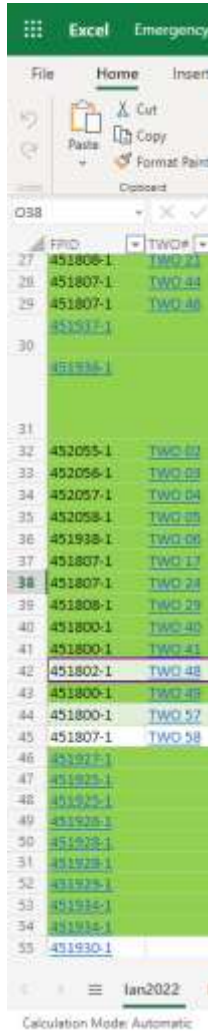
Clipboard Font Alignment Number Styles Cells Editing Analyze Data

FRD	TWO#	Project Name	Cert Needed/Provided	Species-Specific Survey Needed?	CRAS	TYPE	Section 4(f)/106	CSER
451808-1	TWO 21	SR 72 south of SR 70	8/2022- Type 1 CE signed		Need to transmit to SHPO			
451807-1	TWO 44	US 17 SB South of Stenstrom	26/22- Type 1 CE signed		Need to transmit to SHPO			Memo in Folder
451807-1	TWO 46	US 17 at Bostick	26/22- Type 1 CE signed		Need to transmit to SHPO			Memo in Folder
451937-1		Pine Island Road Emergency Repair	8/2022- Type 1 CE signed		SHPO Coord needed for Project File	FWS/NMFS email for Emrg Sec 7 Consult		Need
451936-1		Sanibel Causeway Emergency Repair	10/2022- Type 1 CE signed		SHPO Coord needed for Project File	FWS/NMFS email for Emrg Sec 7 Consult, completion needed for the project file. FWS CBRA ECOSPHERE Project Code 2023-0003952		Done
452055-1	TWO 04	HURRICANE IAN BIG HICKORY - TEMPORARY REPAIRS	24/22- Type 1 CE signed		Need to transmit to SHPO			Memo in Folder
452056-1	TWO 03	HURRICANE IAN NEW PASS - TEMPORARY REPAIRS	24/22- Type 1 CE signed		Need to transmit to SHPO			Memo in Folder
452057-1	TWO 04	HURRICANE IAN LITTLE CARLOS - TEMPORARY REPAIRS	21/22- Type 1 CE signed		Need to transmit to SHPO			Memo in Folder
452058-1	TWO 05	HURRICANE IAN BIG CARLOS - TEMPORARY REPAIRS	26/22- Type 1 CE signed		Need to transmit to SHPO			Memo in Folder
451938-1	TWO 06	Periwinkle Bridge #126500	4/22- Type 1 CE signed		Need to transmit to SHPO			Memo in Folder
451807-1	TWO 17	US 17 at Thompson Branch	07/2022 - Type 1 CE Signed		Need to transmit to SHPO			Memo in Folder
451807-1	TWO 24	SR 636 at Hollandtown Rd	04/22 - Type 1 CE signed		Need to transmit to SHPO			Memo in Folder
451808-1	TWO 29	SR 72 at Horse Creek	3/2022 - Type 1 CE Signed		Need to transmit to SHPO			Memo in Folder
451800-1	TWO 40	I-75 SB at MM 196	8/22- Type 1 CE signed					Memo in Folder
451800-1	TWO 41	I-75 at N Toledo Blade	9/22- Type 1 CE signed					Memo in Folder
451802-1	TWO 48	US 41 N Side of Bridge #120002 (Caloosa)						Memo in Folder
451800-1	TWO 49	I-75 NB at River Road	8/22- Type 1 CE signed					Memo in Folder
451800-1	TWO 57	I-75 NB 5 of Jacaranda						Memo in Folder
451807-1	TWO 58	SR 62 West of US 17						
451927-1		HURRICANE IAN PERMANENT SIGNAL REPAIR - US 17 - Hardee	19/22- Type 1 CE signed		Section 106 PA - Sent			No Memo Needed, based on Scope I
451925-1		HURRICANE IAN PERMANENT SIGNAL REPAIR - US 17 - DeSoto	21/22- Type 1 CE signed		Atkins - PA Sent			No Memo Needed, based on Scope I
451925-1		HURRICANE IAN PERMANENT SIGNAL REPAIR - SR 70 - DeSoto	21/22- Type 1 CE signed		Atkins - PA Sent			No Memo Needed, based on Scope I
451926-1		HURRICANE IAN PERMANENT SIGNAL REPAIR - US 27 - Glades	24/22- Type 1 CE signed		Paleo - PA Sent			No Memo Needed, based on Scope I
451928-1		HURRICANE IAN PERMANENT SIGNAL REPAIR - SR 29 - Hendry	26/22- Type 1 CE signed		Paleo - CA Letter Sent, Needs Signature			No Memo Needed, based on Scope I
451928-1		HURRICANE IAN PERMANENT SIGNAL REPAIR - SR 80 - Hendry	26/22- Type 1 CE signed		Paleo - CA Letter Sent, Needs Signature			No Memo Needed, based on Scope I
451929-1		HURRICANE IAN PERMANENT SIGNAL REPAIR - SR 27 - Highlands	24/22- Type 1 CE signed		Atkins - PA Sent			No Memo Needed, based on Scope I
451934-1		HURRICANE IAN PERMANENT SIGNAL REPAIR - US 441 - Okeechobee	04/22- Type 1 CE signed		Atkins - PA Sent			No Memo Needed, based on Scope I
451934-1		HURRICANE IAN PERMANENT SIGNAL REPAIR - SR 710 - Okeechobee	26/22- Type 1 CE signed		Atkins - PA Sent			No Memo Needed, based on Scope I
451930-1		HURRICANE IAN EMERGENCY/DISASTER PREPAREDNESS - US 41 - Lee			Atkins Memo Sent to SHPO 11/8			

lan2022 Nicole2022 Contact Information +

Calculation Mode: Automatic Workbook Statistics 100%

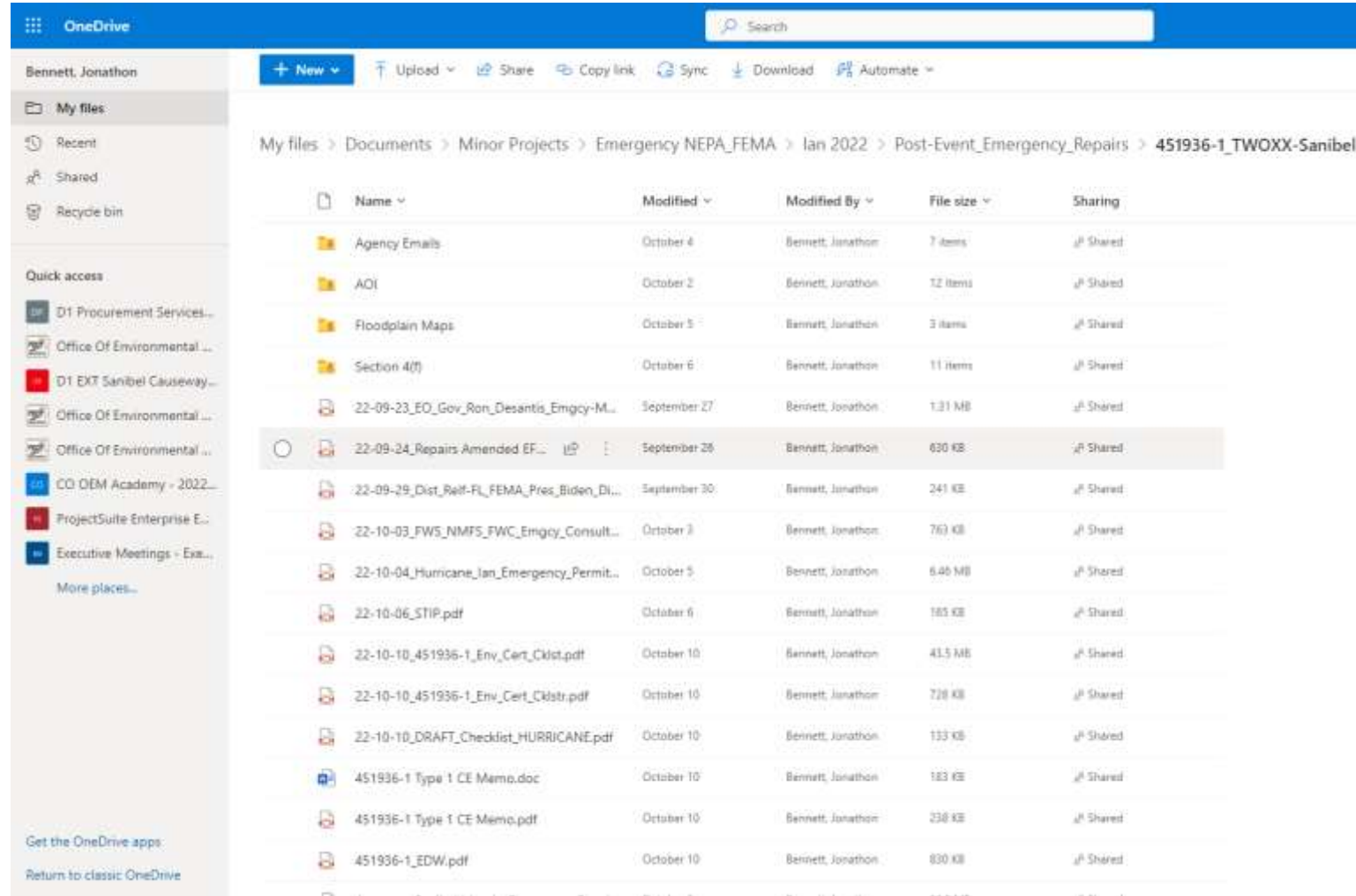
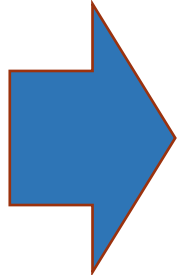
Linking to working files



Excel Emergency

FPID	TWO#
451806-1	TWO 33
451807-1	TWO 44
451807-1	TWO 46
451937-1	
451936-1	
452055-1	TWO 02
452056-1	TWO 03
452057-1	TWO 04
452058-1	TWO 05
451938-1	TWO 06
451807-1	TWO 12
451807-1	TWO 24
451808-1	TWO 29
451800-1	TWO 40
451800-1	TWO 41
451802-1	TWO 48
451800-1	TWO 49
451800-1	TWO 57
451807-1	TWO 58
451937-1	
451935-1	
451932-1	
451928-1	
451925-1	
451923-1	
451921-1	
451916-1	
451914-1	
451930-1	

Calculation Mode: Automatic



OneDrive

Bennett, Jonathon

My files

Recent

Shared

Recycle bin

Quick access

- D1 Procurement Services...
- Office Of Environmental ...
- D1 EXT Sanibel Causeway...
- Office Of Environmental ...
- Office Of Environmental ...
- CO OEM Academy - 2022...
- ProjectSuite Enterprise E...
- Executive Meetings - Exa...

More places...

Get the OneDrive apps

Return to classic OneDrive

Search

+ New

Upload

Share

Copy link

Sync

Download

Automate

My files > Documents > Minor Projects > Emergency NEPA_FEMA > Jan 2022 > Post-Event_Emergency_Repairs > 451936-1_TW0XX-Sanibel

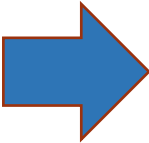
Name	Modified	Modified By	File size	Sharing
Agency Emails	October 4	Bennett, Jonathon	7 items	Shared
AOI	October 2	Bennett, Jonathon	12 items	Shared
Floodplain Maps	October 5	Bennett, Jonathon	3 items	Shared
Section 4(f)	October 6	Bennett, Jonathon	11 items	Shared
22-09-23_EO_Gov_Ron_Desantis_Emgcy-M...	September 27	Bennett, Jonathon	1.31 MB	Shared
22-09-24_Repairs Amended EF...	September 28	Bennett, Jonathon	630 KB	Shared
22-09-29_Dist_Reif-FL_FEMA_Pres_Biden_Di...	September 30	Bennett, Jonathon	241 KB	Shared
22-10-03_FWS_NMFS_FWC_Emgcy_Consult...	October 3	Bennett, Jonathon	763 KB	Shared
22-10-04_Hurricane_Ian_Emergency_Permit...	October 5	Bennett, Jonathon	6.46 MB	Shared
22-10-06_STIP.pdf	October 6	Bennett, Jonathon	165 KB	Shared
22-10-10_451936-1_Env_Cert_Cklist.pdf	October 10	Bennett, Jonathon	41.5 MB	Shared
22-10-10_451936-1_Env_Cert_Cklist.pdf	October 10	Bennett, Jonathon	728 KB	Shared
22-10-10_DRAFT_Checklist_HURRICANE.pdf	October 10	Bennett, Jonathon	133 KB	Shared
451936-1 Type 1 CE Memo.doc	October 10	Bennett, Jonathon	183 KB	Shared
451936-1 Type 1 CE Memo.pdf	October 10	Bennett, Jonathon	238 KB	Shared
451936-1_EDW.pdf	October 10	Bennett, Jonathon	830 KB	Shared

Color Coded, Access, and Sharing

999999-9	Caution		
999999-9	Complete		
999999-9	Past Due		
999999-9	Pending		

Share **Comments**

- Share
- Copy Link
- Manage Access

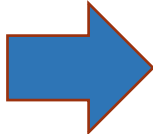


https://fldot-my.sharepoint.com/:x/g/pers... Copy ...

People you specify can view

Direct access

- Bennett, Jonathon (Owner)
- Peters, Lauren
- James, Jeffrey W
- Turley, David
- Michelle Rutishauser (EXTERNAL USER)
- Bateman, Patrick
- Garcia, Andrea



Share



Viewing



Editing

PD&E Production Slides



District One Environmental Management Office

Monthly PD&E Status and Production Meeting

January 2023



DEMO Active Projects

FPO	Description	County	CGA	Project Manager	PC	SIS Route	LRE	YOF	Status
414380-1	SR 20 West Jefferson Avenue to CR 28	Highlands	CG2	David C. Turley, P.E.	No	Yes	3,823.5 M + 317.8 M	2045+	Ongoing coordination with FPL
414365-1	SR 70 from CR 20 to Lanesboro Island Road	Highlands	CG2	David C. Turley, P.E.	No	No	\$37 M	2045	Project active
413340-1	SR 20 from CR West Road to SR 82	Duval	EA	Kirsten Warren	Yes	Yes	\$365.7 M	2025	LDCA anticipated summer 2024
400349-1	SR 21 Extension from SR 70 to US 41	DeFude	EA*	Steven A. Andrews	No	No	\$34.3 M	2045+	Alternatives Workshop - 2023
401211-1	US 1792 (proposed) Extension from South 39 Street to 17th Street	Polk	CG2	Jeffrey "JT" Jensen, P.E.	No	No	\$7.9 M	2044	Public Hearing - Early 2023
401230-1	SR 90/50 from Carbon Black from Edgely Road to CR 664	Law	CG2	Kirsten Warren	Yes	No	\$8.8 M	2022	LDCA approval June 2022
433726-2	SR 90/50 from Carbon Black from Consent St to Hartland Park Bridge	Law	CG2	Kirsten Warren	Yes	No	\$8.8 M	2022	LDCA approval June 2022
404490-1	SR 20 from I-75 to CR West Road	Goliver	EA*	Kirsten Warren	No	Yes	\$34 M - \$36 M	2045+	Revised concepts being developed
432526-1	Taylor Road Trail from Airport Road to US 41	Charlotte	CG1*	Melody Marks, P.E.	No	No	Orig. 1. \$6.2 M Rev. 2. \$5.4 M	Not Available	Finalizing State Consent/ Next Step: Pass the Torch
408110-1	Re-Lane County Lane (open with 435347-1) CR 847/CR US 41 from US 41 to US 41	Goliver	CG2	Steven A. Andrews	No	No	\$10.0 M	2021	Public Hearing - Spring 2021
400347-1	Law to South Beach Road (open with 432110-1)	Law	CG2	Steven A. Andrews	Yes	No	\$11.0 M	2019	Public Hearing - Spring 2023
408351-1	CR (Over Trail from Automobile to Humber City	Polk	CG2	Steven A. Andrews	No	No	\$12.2 M	Not Available	Public Hearing - Spring 2023

435830-1: CR 664 (Bridge #060034)



- **Project Limits:** over Little Payne Creek
- **Project Manager:** Patrick Bateman, P.E.
- **Class of Action:** Type 2 Categorical Exclusion
- **Purpose:** Potential reconstruction/replacement of CR 664 Bridge #060034 to address structural integrity
- **Key Stakeholders:** Hardee County, Heartland Regional TPO, City of Bowling Green
- **LRE:** \$1.95 M (March 2022)
- **Planning Consistency:** Yes
- **Design Date:** Overlapping design project, letting March 2024
- **Status:** Beginning 105 case study
- **Considerations:** Evaluated design suggestion that came up during 105 hearing opportunity, will still be replacing bridge

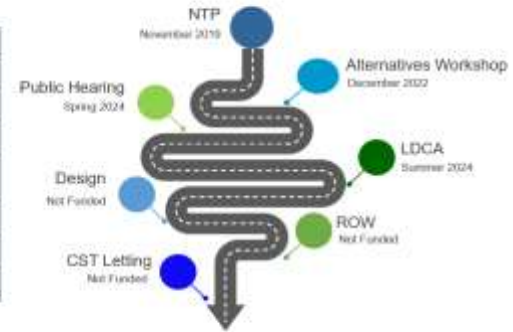
444937-1: SR 78

Timeline

Date	Milestone
November 15, 2019	PD&E Start (NTP)
November 9, 2022	Key design coordination
November 3, 2022	LCDOT Meeting
December 6 (in-person) December 8 (virtual), 2022	Alternatives Workshop
Spring 2024	Public Hearing
Summer 2024	LDCA
Late 2024	Pass the Torch

Preliminary Schedule - subject to change

Design, ROW, and Construction are currently not funded





Safety, Questions and Contact Information

Abra Horne
FDOT Environmental Administrator
FDOT District One
(863) 519-2239

Jeffrey James
FDOT Environmental Manager
FDOT District One
(863)519-2625

Jonathon Bennett
Environmental Project Manager
ETDM Coordinator
FDOT District One
(863) 519-2495



Turnpike

Etna Turpentine Camp: Resolving Adverse Effects Through Collaboration



Doug Zang

*Senior Environmental Scientist, Atkins
In-House Consultant to Turnpike Enterprise*

Turnpike

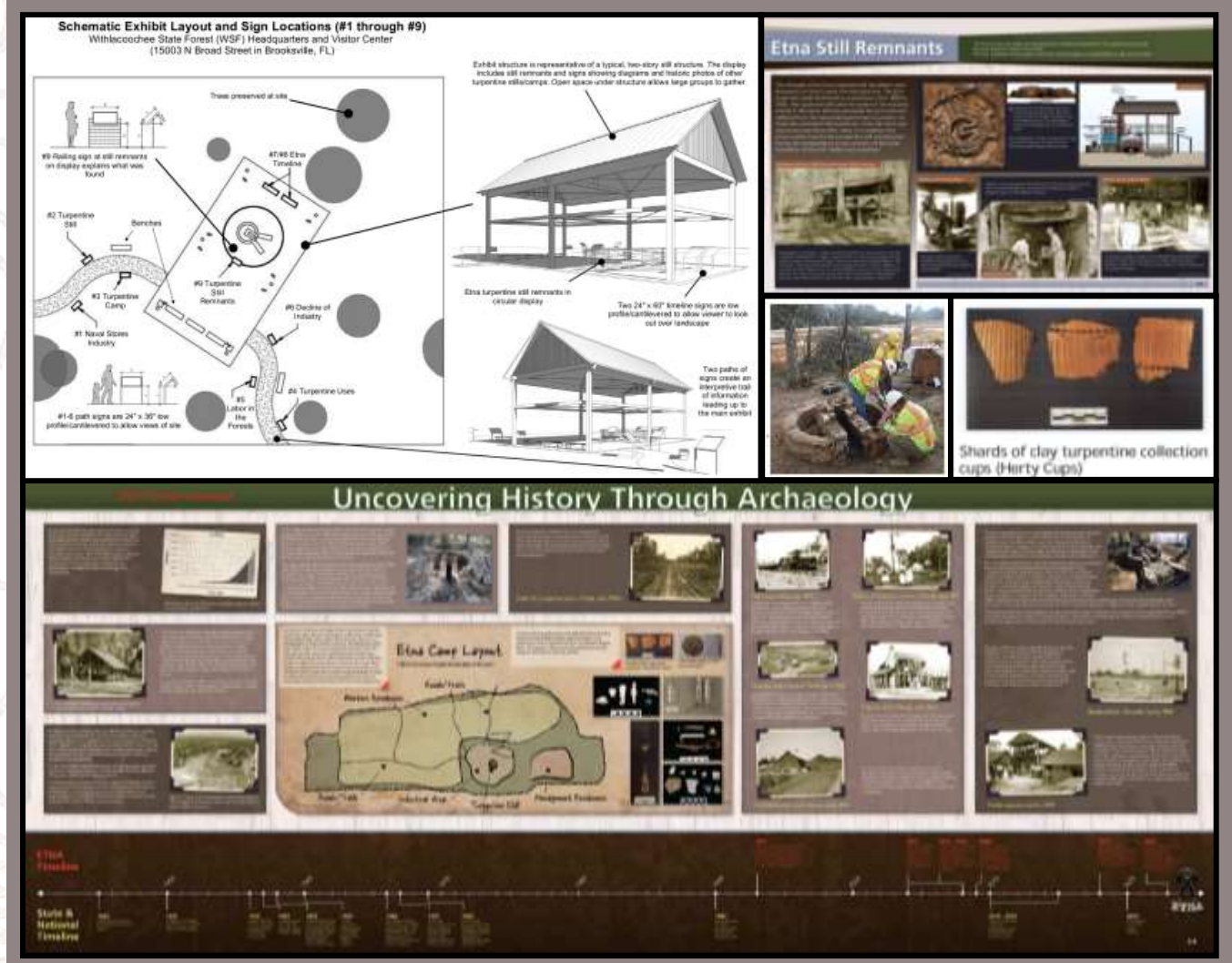
Etna Turpentine Camp: Resolving Adverse Effects Through Collaboration

CHALLENGE

- Adverse Effects to National Register-eligible Etna Turpentine Camp site
- Multiple interested and consulting parties including SHPO, FWS, FFS, Withlacoochee State Forest, and Friends of Etna public preservation group

SOLUTION

- Creative and collaborative mitigation strategy
- Intensive agency coordination
- Frequent public participation and responsiveness to public concerns
- High quality products including the archaeological and technical reports, relocation site design, still reassembly plan, and interpretive and educational materials

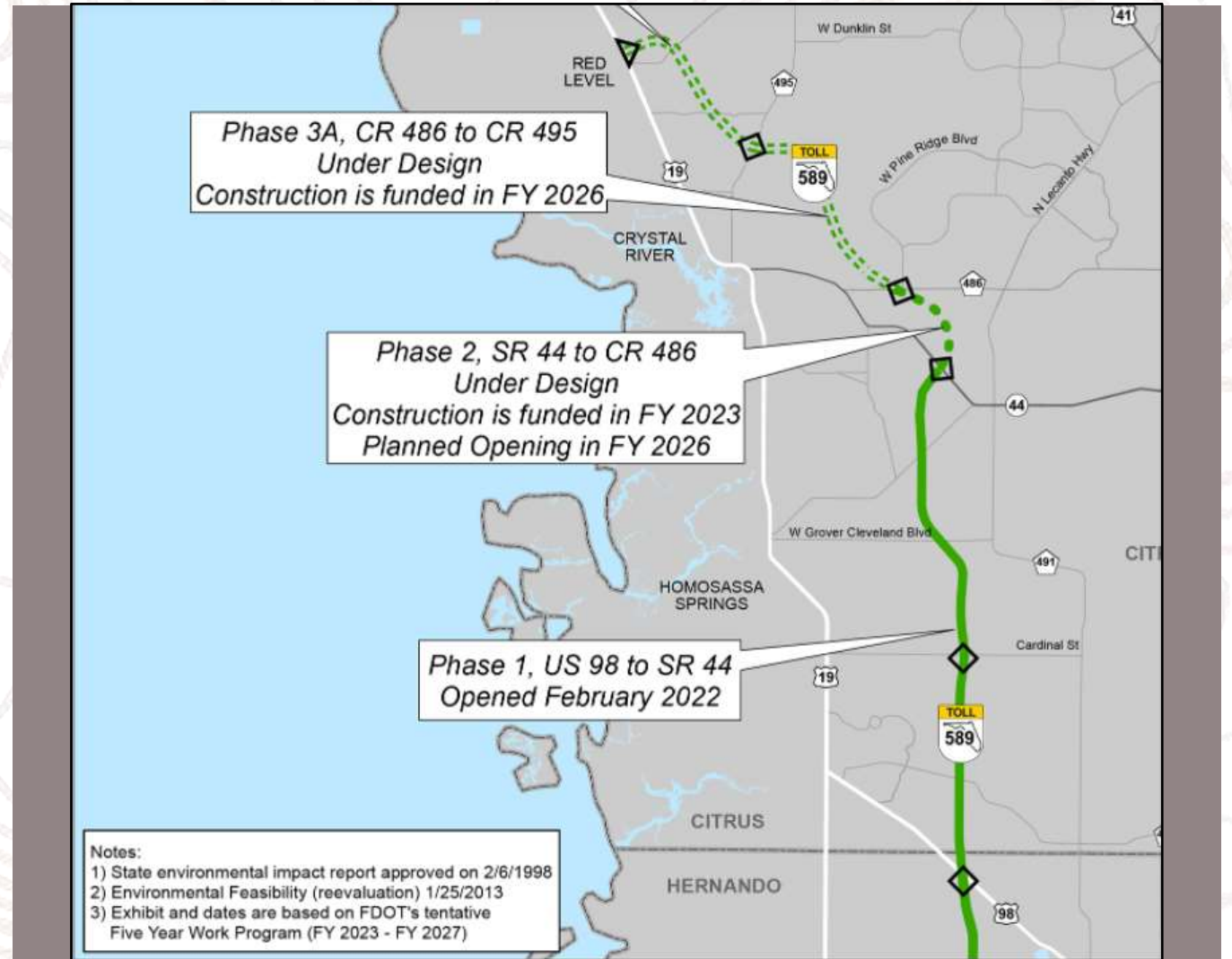


Turnpike

Etna Turpentine Camp: Resolving Adverse Effects Through Collaboration

Suncoast Parkway

- Suncoast Parkway extends north from Tampa's Veterans Expressway through Pasco and Hernando Counties into Citrus County
- Suncoast Parkway 2:
 - Three "Phases" from US 98 north of Brooksville to US 19 north of Crystal River
 - Etna site located in Suncoast 2 Phase 1 segment (opened to traffic February 2022).



Turnpike

Etna Turpentine Camp: Resolving Adverse Effects Through Collaboration

Etna Site

- First identified in 1990s Utility Corridor Survey
 - Identified Turpentine Still and lumber camp
- Listed in 2009 on National Register of Historic Places
- Could not be avoided by Suncoast Parkway project by shifting alignment:
 - Adjacent utility corridor and residential/golf area to west
 - State Park and endangered species habitat to east

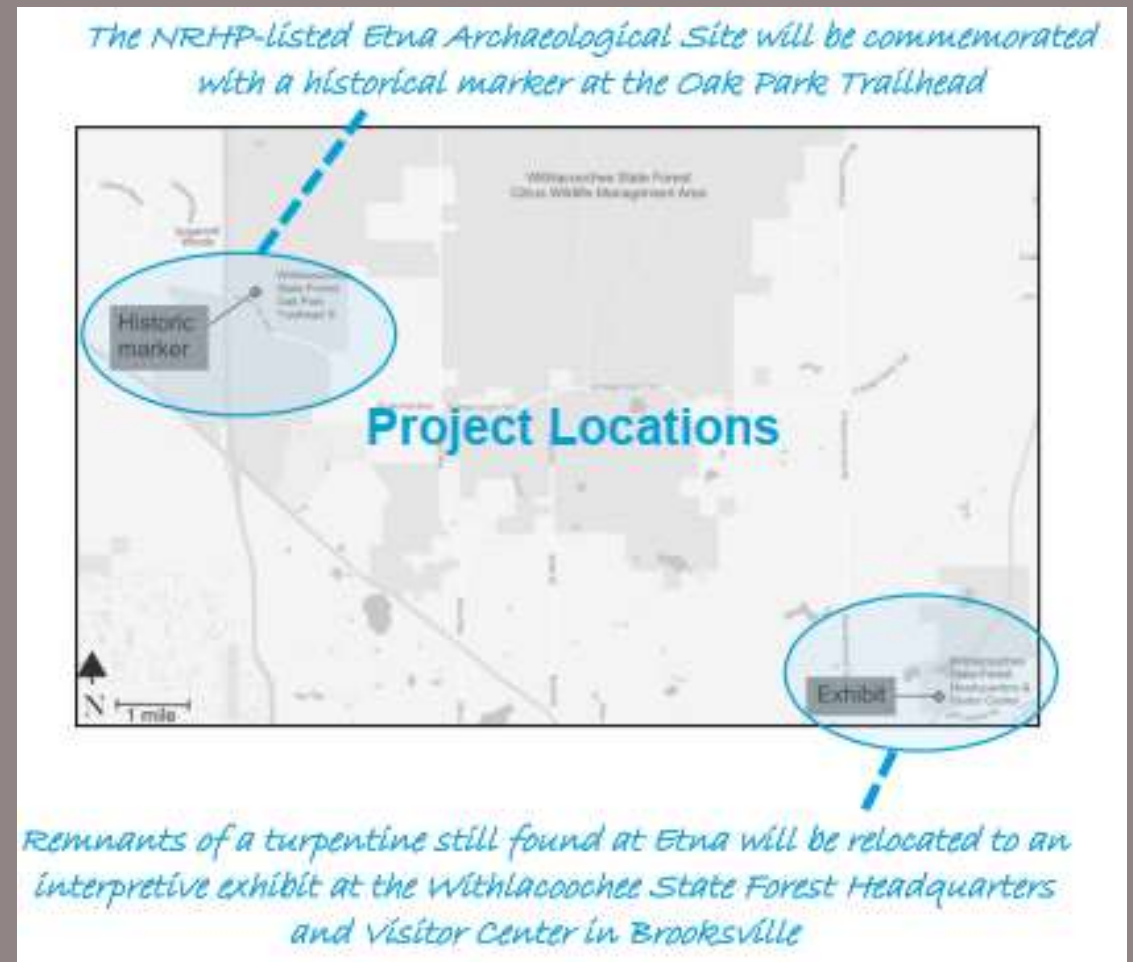


Turnpike

Etna Turpentine Camp: Resolving Adverse Effects Through Collaboration

MEMORANDUM OF AGREEMENT (MOA)

- Signatories:
 - SHPO
 - USFWS
- Concurring Signatories:
 - FDOT/Florida's Turnpike Enterprise
 - Florida Forest Service - Withlacoochee State Forest
- Local Advocacy Group Friends of Etna commented through USFWS
- MOA Stipulations:
 - Archaeological Data Recovery
 - Museum Quality Interpretive Exhibit at Withlacoochee State Forest HQ (8 miles from Etna site)
 - Historic Marker at Oak Park Trailhead



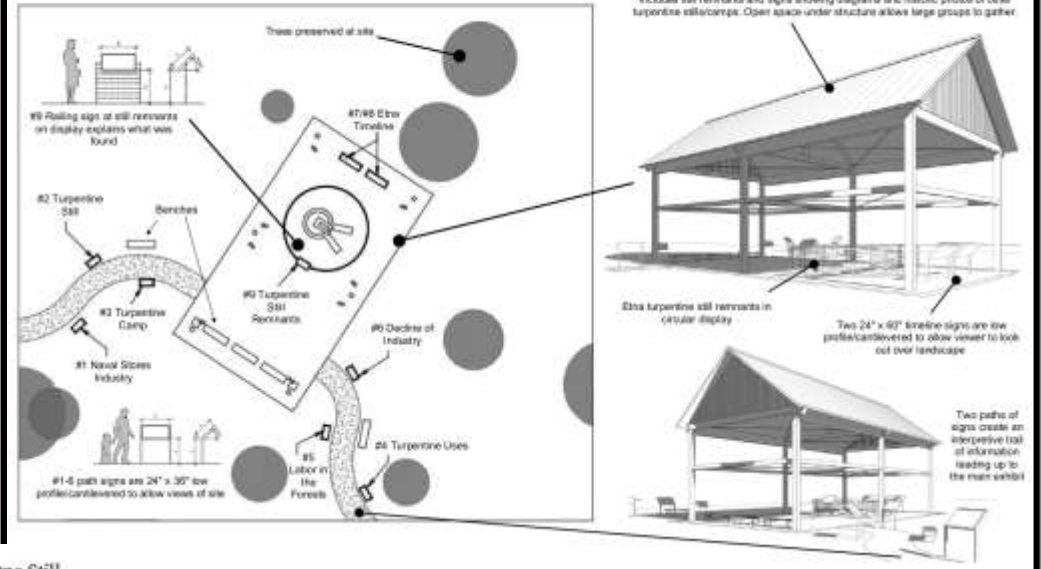
Turnpike

Etna Turpentine Camp: Resolving Adverse Effects Through Collaboration

COLLABORATIVE MITIGATION

- MOA agencies have reviewed and approved:
 - archaeological and technical reports,
 - relocation site design,
 - still reassembly plan, and
 - interpretive and educational materials
- CRAS performed for Exhibit Site/Historic Marker
- Finished 100% design plans in autumn 2022
- Construction in 2023

Schematic Exhibit Layout and Sign Locations (#1 through #9)
Withlacoochee State Forest (WSF) Headquarters and Visitor Center
(15003 N Broad Street in Brooksville, FL)



Etna Still
Historical Marker



Turnpike

Etna Turpentine Camp: Resolving Adverse Effects Through Collaboration

SAMPLE INTERPRETIVE MATERIALS SIGN

Etna Turpentine Still Exhibit



Etna Still Remnants

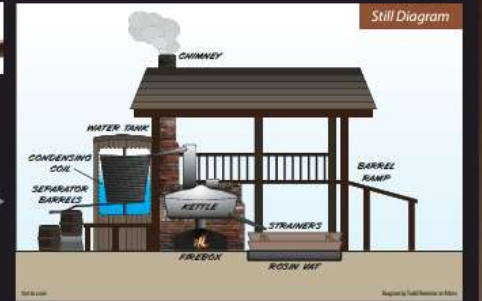
The structure you are standing under is designed to represent a typical two-story still based on historic information. The remnants of a turpentine still foundation were salvaged from the original site and reassembled here for this exhibit.

The remnants of a turpentine still were discovered in Citrus County and relocated here. The still is one of many artifacts discovered at the Etna Turpentine Camp. Etna functioned as a small town from 1898 to 1926 producing naval stores and lumber. The camp had two turpentine stills located in the industrial center of the camp. Workers collected gum from the pine forest to process in the still. The gum was distilled into the naval store products turpentine and rosin. Since the camp was abandoned and dismantled, there is no evidence that shows exactly how the stills were designed. The lower foundation of the brick firebox for one of the stills was discovered during archaeological survey.



Images of the still foundation remnants that were discovered at Etna. The lower portion of the still firebox foundation was found below ground. The surrounding stones were probably used to stabilize the bricks.

This still diagram is based on drawings and photos from the past. It shows how the Etna still probably looked and functioned.



McCranie's Still from National Register of Historic Places (NRHP)



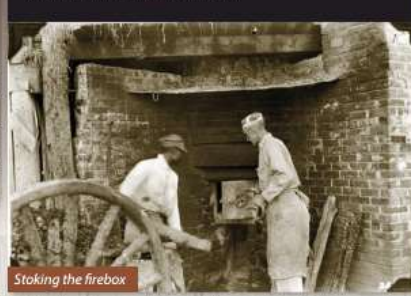
Photographs and diagrams of other stills help us imagine what the Etna Turpentine Still looked like. A typical turpentine still was a two-story wooden structure where the pine products were heated, cooled and separated through distillation. The McCranie's Turpentine Still is located in southern Georgia. It was built in 1936 and is one of the only remaining intact stills. It was listed in the NRHP in 1976.

Worker on the second floor



Workers on the second floor brought the heavy barrels up the ramp and poured the raw pine gum into the kettle.

Workers on the ground floor fed wood into the firebox to heat the kettle. Hot air escaped through the chimney and the water tank cooled the products as part of the distillation process.



Stoking the firebox

Worker on the ground floor



A two-part separation system on the ground floor produced liquid turpentine that was drained into barrels and a hot sticky byproduct called rosin. The hot rosin was taken from the straining vat and placed in barrels where it hardened.

Turnpike

HISTORIC MARKER

Etna Turpentine Camp: Resolving Adverse Effects Through Collaboration

Historical Marker

The purpose of the historical marker (**Attachment B**) at the Oak Park Trailhead is to commemorate the location of the NRHP-listed Etna Turpentine Camp Archaeological Site (8C1795). Several options for markers or signs at this location were considered. A traditional historic metal marker sign with raised lettering (approximately 30" x 42") was recommended. This type of metal sign is a durable and low maintenance option for this location. This sign type is recognized as the traditional marker to distinguish historic sites across the state and is used by the Florida Division of Historical Resources (FDHR) for their historical marker program. The marker will be installed near an existing informational kiosk along the natural area/hiking trail.

The standard metal marker can be ordered through the FDHR historical marker program.

The historical marker will be located near the original Etna site at the Oak Park Trailhead (part of the Withlacoochee State Forest Citrus Wildlife Management Area)



The two-sided, durable sign is recognized as the official marker for historic sites in the state of Florida

SIDE 1



SIDE 2



A brief description of Etna is provided, and the viewer is encouraged to visit the main exhibit to learn more

The natural hiking and hunting area has a parking area and an informational kiosk for the forest. The marker will be placed next to the existing kiosk

District 5

NASA Causeway Bridge Replacement: PD&E Study “Plus”



Mary McGehee

*Project Development Coordinator
Florida Department of Transportation, District Five*

NASA Causeway Bridge Replacement Project Development & Environment (PD&E) Study and Final Design

“PD&E +”



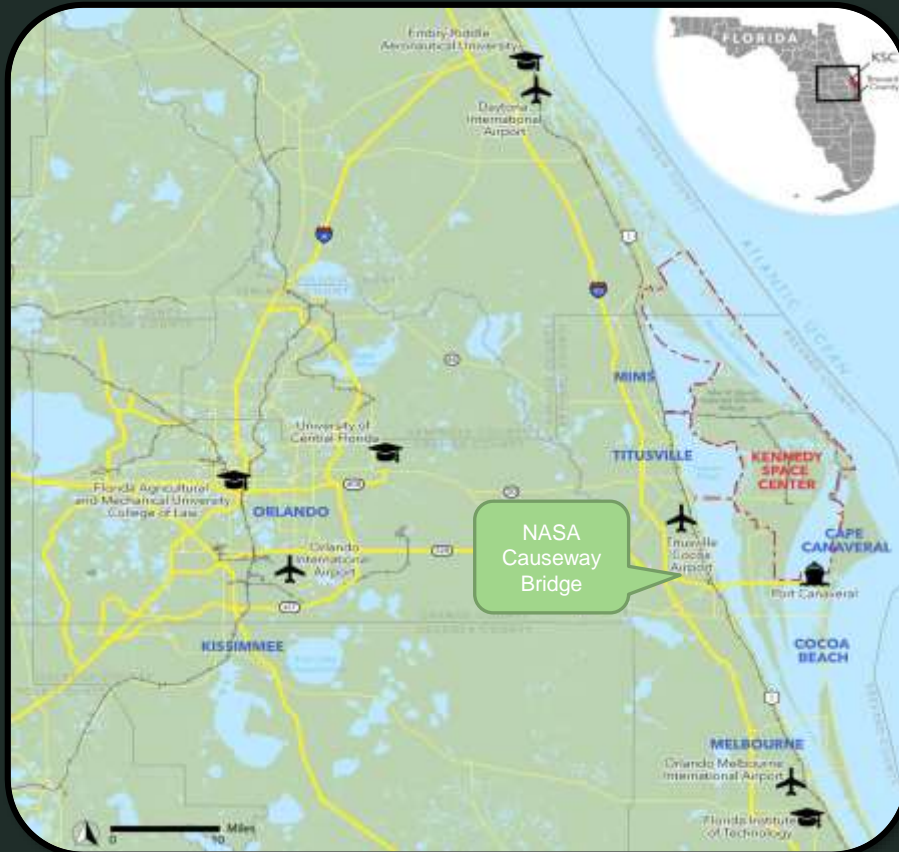
Presented by:

Mary McGehee

FDOT District 5

Kennedy Space Center (KSC) “Quick Facts”

- Established: 1962
- Area: 141,829 acres (includes Merritt Island National Wildlife Refuge)
- Current Employees: 10,000+
- Annual Visitors: 1.5 million
- Launch Pads:
 - Three at KSC
 - Five at Cape Canaveral Air Force Station (CCAFS)



Existing Bridge

- “Lifeline” of Cape Canaveral Spaceport (CCS)
- Used to carry heavy payloads (space freight) to launch facilities at KSC
- Twin bridges built in 1964
- 2,993’ long, 58-span bridge
- Double-leaf bascule main span
- 90’ horizontal navigable opening
- 28’ vertical clearance (under closed position)
- Predicted to be de-rated by 2021



Purpose and Need



- Purpose: address structural deficiencies
- Need: provide safe and efficient movement of space freight while enhancing economic development
- Improve carrying capacity and load rating to support existing and future transport needs of NASA, KSC, CCAFS and commercial launch partners

Primary Agency Roles



❖ National Aeronautics & Space Administration

- NASA owns the bridge and right-of-way
- Provided funding for the PD&E Study & Final Design
- Served as Cooperating Agency under NEPA
- Provided construction funding (up to 20%)



❖ FHWA-EFL manages access to Merritt Island National Wildlife Refuge created by NASA in early 1960's

- Provided mechanism for Study & Design funding to flow from NASA to FDOT
- Provided technical reviews and financial oversight
- Providing construction funding (up to 60%)



❖ FDOT's Office of Environmental Management

- Served as the Federal Lead Agency for NEPA under the NEPA Assignment granted in 2016
- Provided guidance to District Office and Study team all along the way
- Provided technical reviews and financial oversight through the entire study
- Granted LDCA (April 2020)

Additional Agency Roles



❖ US Coast Guard

- Bridge Administration (permit required)
- Criteria for horizontal & vertical clearances
- Served as Cooperating Agency under NEPA



❖ US Army Corps of Engineers

- Constructed the existing bridge
- Section 404 permit required under Clean Water Act
- Served as Participating Agency under NEPA



❖ Space Florida

- Created by Florida Legislation
- Public-private partnership to serve growing aerospace related industry of Florida
- Leverage relationships (Air Force, NASA, USDOT, FDOT) to obtain infrastructure funding
- Awarded INFRA Grant in 2019 for NASA Causeway Bridge construction

COORDINATION WAS THE KEY!



- **Constant contact** with FDOT, Agency Partners and Team
- **Weekly check-in calls**
 - Every Monday at 11:00 a.m.
 - Agendas are production and schedule driven
- Up to **20 Participants** including:
 - FDOT Central Office of Environmental Management (Lead agency)
 - FDOT Central Office Legal
 - FDOT District Office Planning, Environmental Management, Design
 - FHWA/Eastern Federal Lands
 - NASA/KSC
 - Space Florida
 - Space Coast Transportation Planning Organization
- **Weekly status reports** roll up to monthly progress reports
 - When assigned/due, who is responsible, what you need
- Technology allowed us to be **connected 24/7/365**
 - GoTo Meetings, file sharing, e-mail, phone

► Innovative Tools for Acceleration

- **Fixing America's Surface Transportation (FAST) Act**
 - Highways of national and regional significance
 - Acceleration of project delivery in NEPA
- **Environmental Streamlining for Section 106 and Section 4(f)**
 - Streamline process of “avoidance alternatives”
- **KSC Programmatic Agreement for Historic Resources**
 - Mechanism to accelerate Section 106 process
- **FDOT Statewide Acceleration Transformation (SWAT) Process**
 - Overlapping Study and Design to advance production
- **Infrastructure for Rebuilding America (INFRA) Grant Funding**
 - Advances the discretionary grant program established by FAST Act
 - Partial funding for construction



▼ NASA Causeway Bridge Replacement Project Development & Environment (PD&E) Study and Final Design

1964....Here's the beginning, just wait till it's finished !!!



Construction complete date is anticipated to be December 24th, 2025 !!!

OEM

**Office of Environmental Management
Program Achievements**



Jennifer Marshall, P.E.

*Director, Office of Environmental Management
Florida Department of Transportation, Central Office*



OEM

Office of Environmental Management
Program Achievements

Excellent
Agency
Coordination

Project
Development

Planning

NEPA
Assignment
Renewal

Environmental
Management

Robust
Training

Time
Savings for
Environmental
Approvals

21 Years
of ETDM

6 Years
of NEPA
Assignment

FDOT



OEM

Office of Environmental Management
Program Achievements

STATEWIDE ACCOMPLISHMENTS UNDER NEPA ASSIGNMENT

Nearly **400** EA and Type 2 CEs Approved

Nearly **300** Project Screening Events

Over **3700** Type 1 CEs Approved



OEM

Office of Environmental Management
Program Achievements

AGENCY COORDINATION

18 Agency Agreements, **12** with Funded ETAT Positions
Over **50** Federal, State, Local, Tribal Agency Relationships
10 Programmatic Approaches Developed



OEM

Office of Environmental Management Program Achievements

TRAININGS

Over **350** Trainings Hosted
Nearly **9000** Attendees



Overview/Background

Planning and Environmental Linkages

Environmental Document Preparation

Environmental Document Reviews

Design and Construction



OEM

Office of Environmental Management
Program Achievements

TRAININGS

Over **350** Trainings Hosted
Nearly **9000** Attendees



YEAR 3!

Celebrate
safely
this
Holiday
Season

