



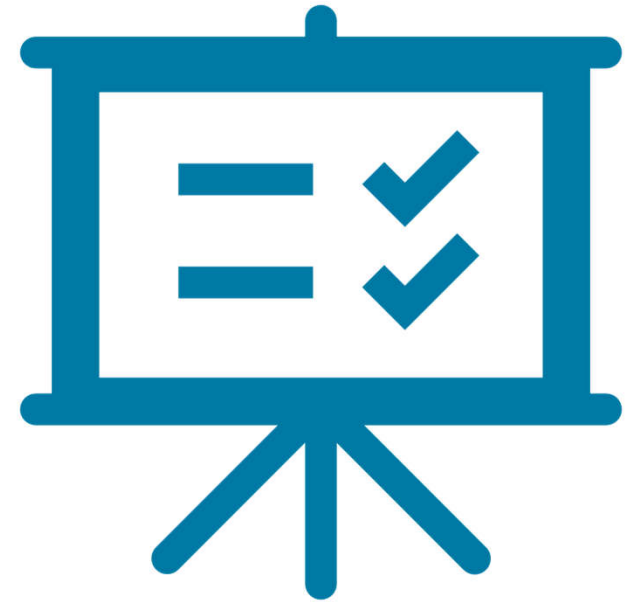
WATERSS & the ETDM Process

Watershed Approach To Evaluate Regional Stormwater Solutions

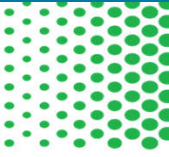


Presentation Goals

- 💧 Introduce WATERSS to appropriate ETAT staff and Watershed Improvement Representatives.
- 💧 Explain the Efficient Transportation Decision Making (ETDM) Process and how the ETDM process can support WATERSS.
- 💧 Communicate expected responses to the WATERSS screening.
- 💧 Gain input on the format and other key WATERSS screening questions.
- 💧 Encourage support and cooperation between FDOT and ETAT.



Why are You Here?



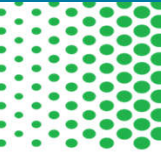
Existing Regulatory ETAT

Degree of Effects

**Watershed Improvement
Representatives**

**Watershed
Opportunities**

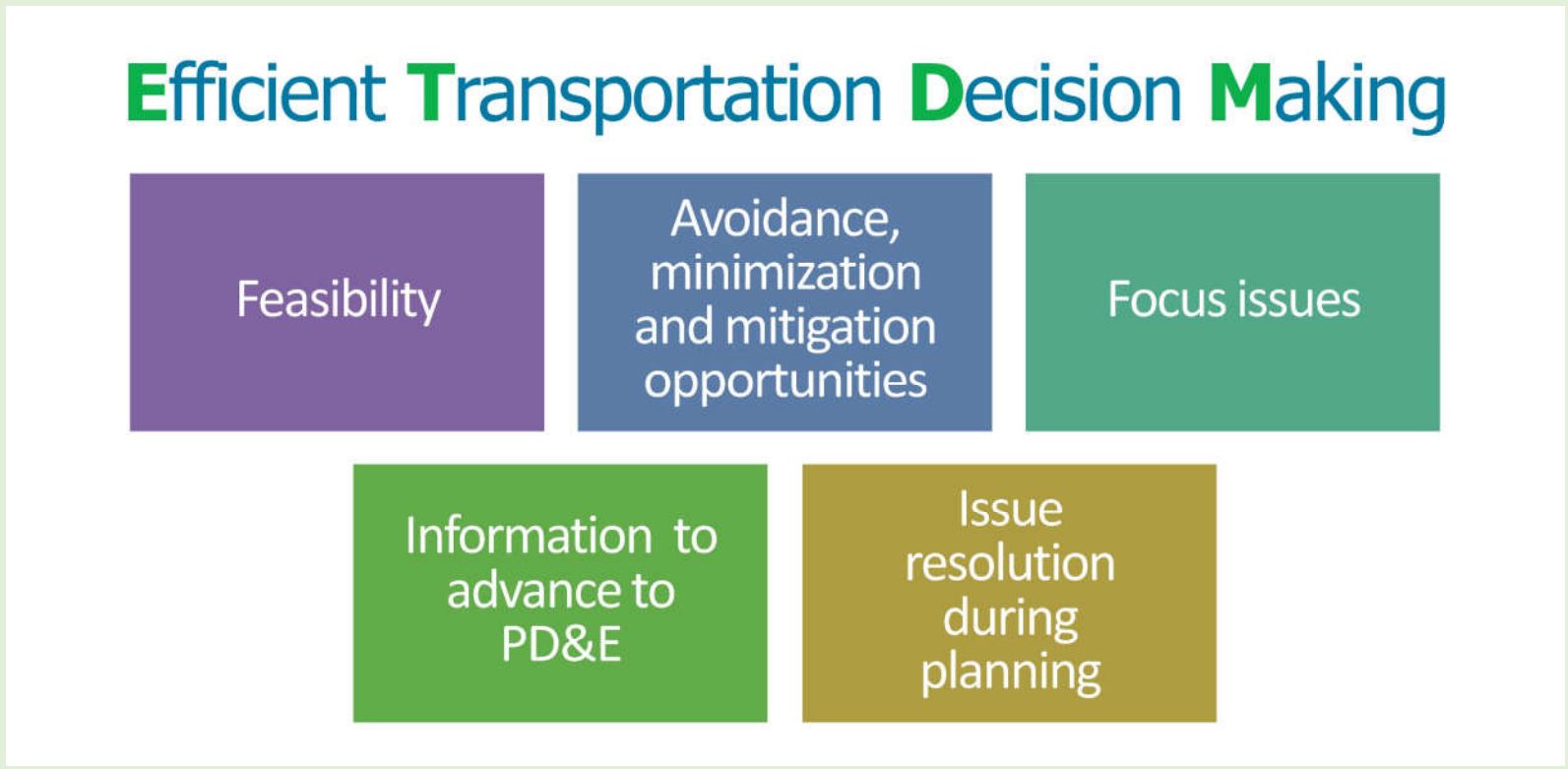
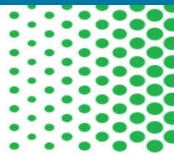
What is WATERSS?



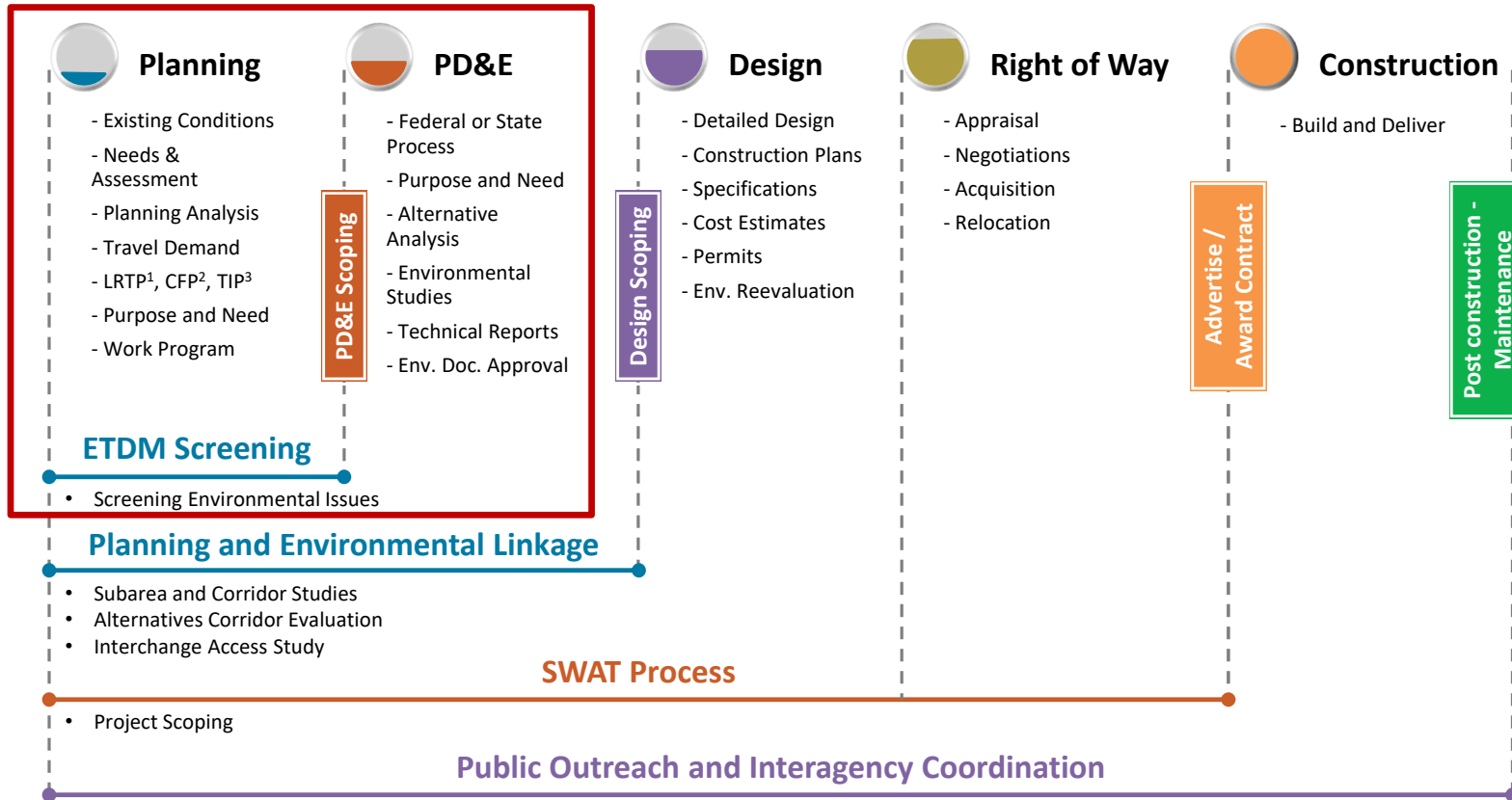
Watershed Approach To Evaluate Regional Stormwater Solutions

- 💧 New step-by-step statewide process involving multiple disciplines
 - 💧 *Based on outreach surveys to FDOT Districts and WMDs*
 - 💧 *Aimed at finding/developing innovative stormwater opportunities*
- 💧 Targeted for select projects/regions
 - 💧 *New alignments, capacity projects, etc.*
 - 💧 *Environmentally sensitive areas: coral reefs, springsheds, estuaries, OFWs*
- 💧 Revised pond siting process for when traditional ponds are necessary

What is ETDM?

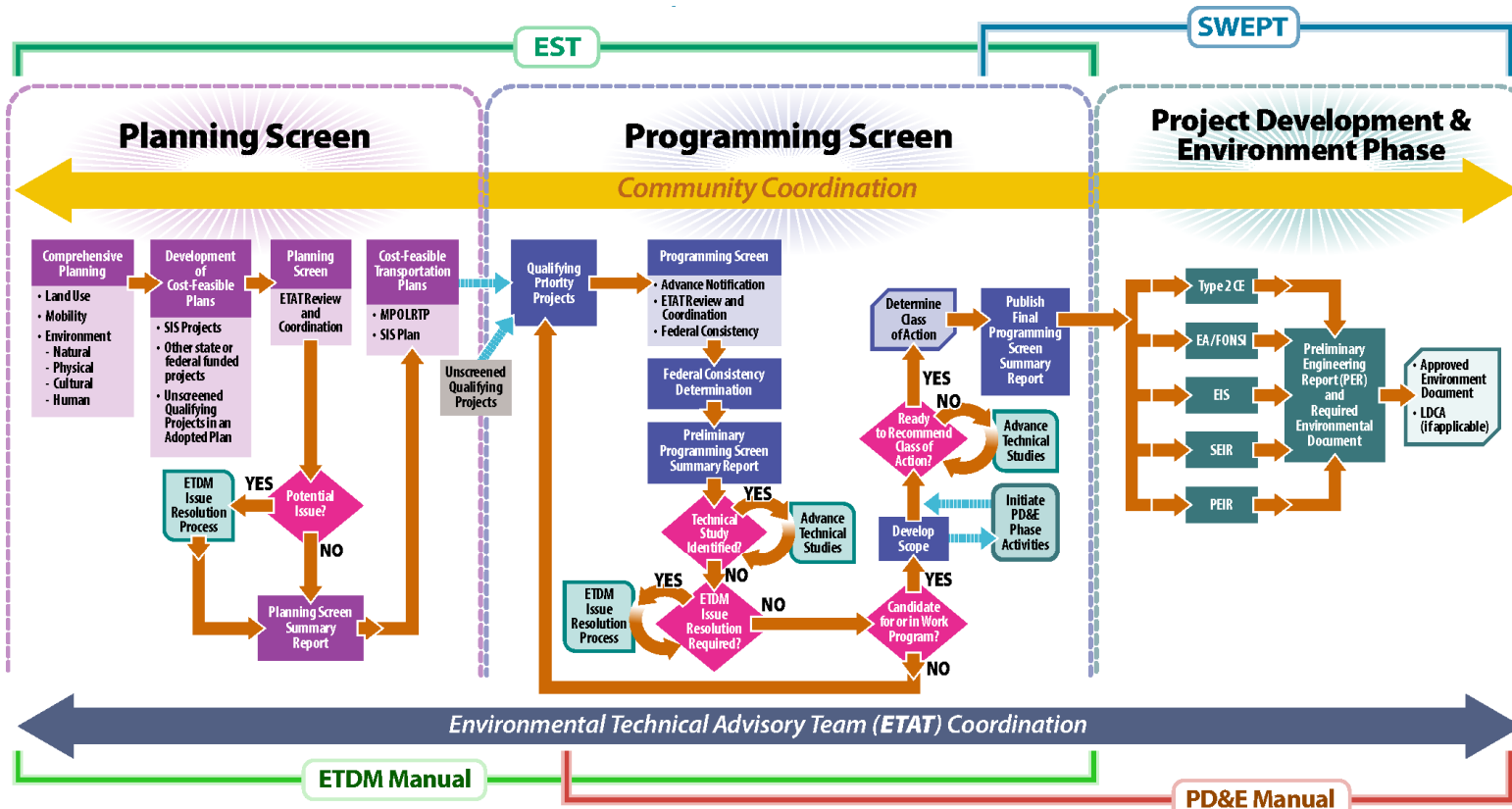


Transportation Project Development Process



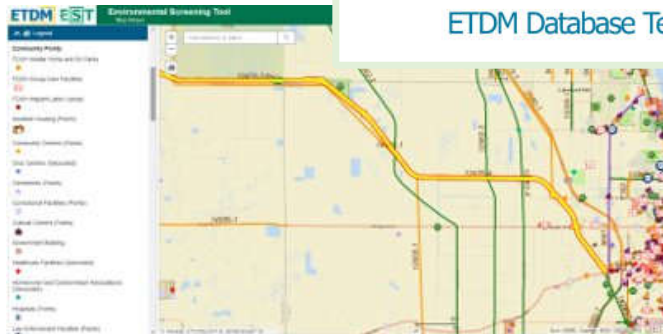
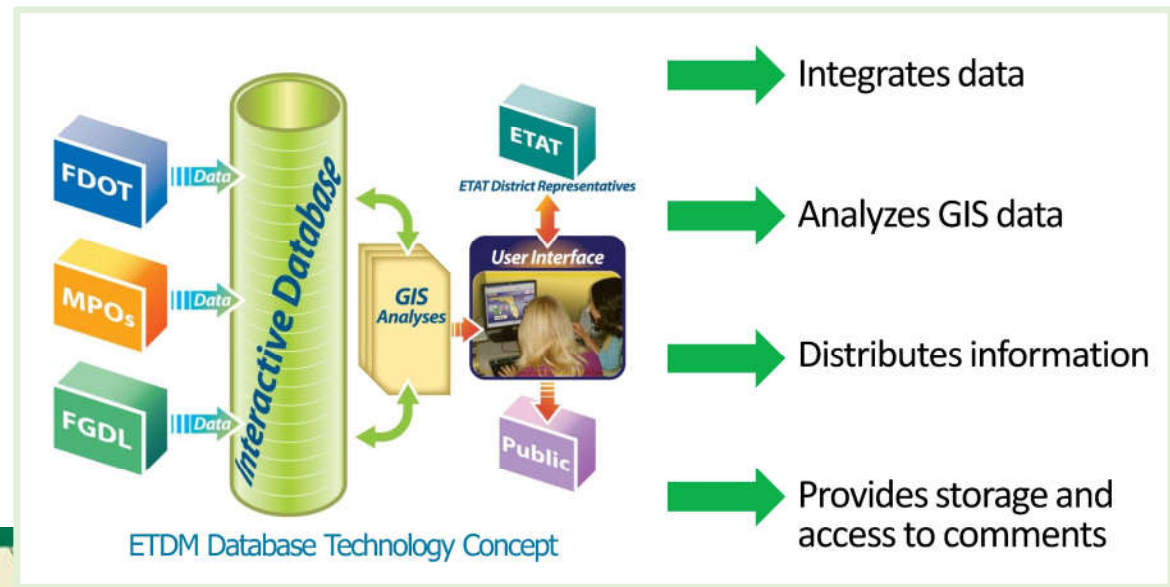
ACRONYMS:
 1 Long Range Transportation Plan
 2 Cost Feasible Plan
 3 Transportation Improvement Plan

ETDM to PD&E



What is the Environmental Screening Tool (EST)?

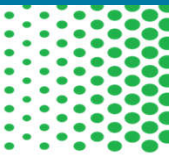
- Web-based User Interface
- Integrate Data from Multiple Sources
- Store and Report Results
- Maintain Project Records
- Geographic Information Systems (GIS)



ETDM Helpdesk
help@fla-etat.org
(850) 414-5334



Secure and Public EST Websites



The screenshot shows the login interface for the secure EST website. At the top, the 'ETDM EST' logo is displayed. Below it, there are input fields for 'Username:' and 'Password:'. A 'Sign In' button is present, along with a link for 'Forgot Password'. At the bottom, logos for 'OEM Office of Environmental Management' and 'FGDL FLORIDA GEOGRAPHIC DATA LIBRARY' are shown, with links for 'About ETDM', 'Public Site', and 'Contacts'. A footer contains the FDOT logo and copyright information: 'Copyright ©2021 Florida Department of Transportation All Rights Reserved'. For additional information, it provides an email address 'oem@fla-etat.org' and a phone number '850-414-5334'.

<https://www.fl-etat.org/est/secure>

The screenshot shows the public EST website home page. At the top, the 'FDOT Florida Department of TRANSPORTATION' logo is visible, along with a search bar for 'Search FDOT...' and links for 'E-Updates | FL511 | Mobile | Site Map'. A navigation menu includes 'Home', 'About FDOT', 'Contact Us', 'Offices', 'Maps & Data', 'Performance', and 'Projects'. The main heading is 'Environmental Screening Tool'. Below this, there is a search bar for 'Search ETDM Public Site for...' and a 'Site Search' button. The 'etdm Efficient Transportation Decision Making' logo is also present. A navigation menu includes 'Welcome', 'ETDM Program Information', 'Project Information', and 'ETDM Contacts'. A 'View Interactive Map' link is also visible. The main content area is titled 'First Time Users' and contains several sections: 'ETDM Program Information' (Overview, Agency Review Responsibilities, Document Library, Guidance, Manuals, Acronyms, Glossary, Agency Agreements, Annual Reports), 'Welcome First Time Users' (Contacts, FAQs, What's New, Subscribe/Unsubscribe), 'First Time Users' (Site Map, Home), and 'First Time Users' (This site provides public access to information about proposed transportation projects, agency comments on a variety of environmental and socio-cultural issues associated with those projects). A 'Project Search' section is also visible, with a 'new search' button and a 'Select a search option:' dropdown menu with options for 'Project Number' and 'Project Name'.

<https://etdmpub.fl-etat.org/est/>



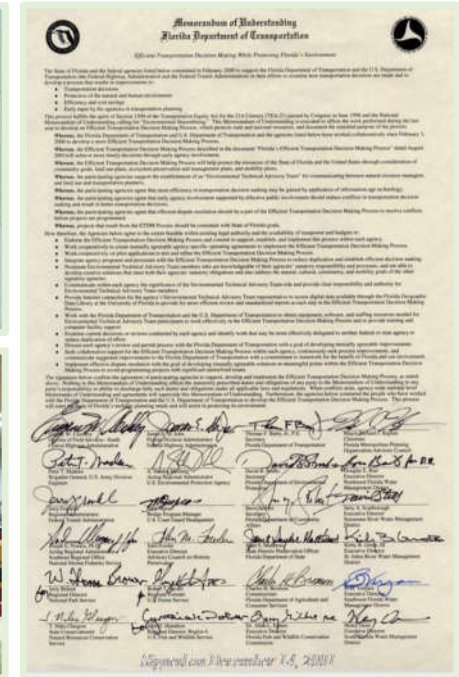
Who is the ETAT?

Federal Agencies

- ◆ Federal Highway Administration (FHWA)
- ◆ Federal Transit Agency (FTA)
- ◆ US Army Corps of Engineers (USACE)
- ◆ US Coast Guard (USCG)
- ◆ US Environmental Protection Agency (USEPA)
- ◆ USDA Natural Resources Conservation Service (NRCS)
- ◆ US Fish & Wildlife Service (USFWS)
- ◆ US Forest Service (USFS)
- ◆ National Resource Conservation Services (NRCS)
- ◆ National Marine Fisheries Service (NMFS)
- ◆ National Park Service (NPS)

Native American Tribal Governments

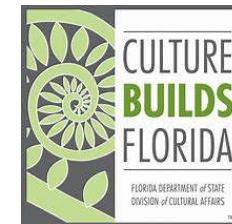
- ◆ Miccosukee Tribe of Indians of Florida
- ◆ Seminole Tribe of Florida



Who is the ETAT?

State Agencies

- ◆ Florida Department of Transportation (FDOT)
- ◆ Florida Department of Environmental Protection (FDEP)
- ◆ Florida Department of Economic Opportunity (FDEO)
- ◆ Florida Department of Agriculture and Consumer Services (FDACS)
- ◆ Florida Fish and Wildlife Conservation Commission (FFWCC)
- ◆ Florida State Historic Preservation Office (SHPO)
- ◆ Northwest Florida Water Management District (NFWWMD)
- ◆ South Florida Water Management District (SFWMD)
- ◆ Southwest Florida Water Management District (SWFWMD)
- ◆ St. Johns River Water Management District (SJRWMD)
- ◆ Suwannee River Water Management District (SRWMD)



WATERSS Expands the Roles of ETAT Agencies

Existing Regulatory Comment Role

- Comments on expected impacts and permit requirements
- Degrees of effect

New Resource Improvement Role - WATERSS

- Identify regional pond opportunities
- Identify direct resource improvement strategies
- Identify and possibly facilitate partnership opportunities

Effects

vs.

Opportunities

What Project Documentation Does the FDOT Develop?

- 💧 Project Location Map
- 💧 Project Description
- 💧 Purpose and Need Statement
- 💧 Preliminary Environmental Discussion (PED)

Home > Project Details
Environmental Screening Tool

Active Project: 14461 - ETDM DEMONSTRATION PROJECT

Project Details

14461 - ETDM DEMONSTRATION PROJECT

District: District 1 Phase: Programming Screen Contact Information: Jonathan Adam Bennett - (853) 519-2495 x2495 - Jonathan.Bennett@fla.fdot.gov

Project Description

Project Description text (Lorem ipsum placeholder)

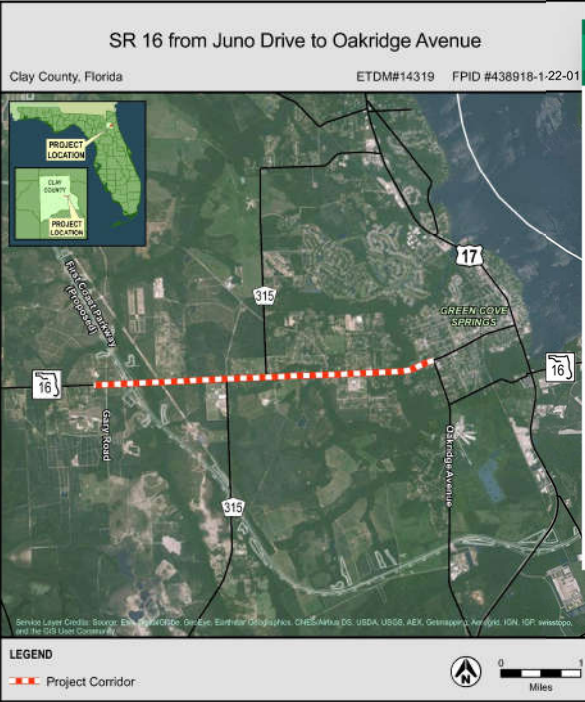
Purpose and Need

Purpose and Need text (Lorem ipsum placeholder)

ETAT Review Tasks

- Review Start Date: 04/12/2021
- Days Remaining: 2

1. Understand Project Data
 - Project Details
 - Project Milestone Report
 - Advance Notification Package Report
2. Assess Resource Data
 - GIS Analysis Report
 - Preliminary Environmental Discussion Report
 - Sociocultural Data Report
 - Cultural Resources Reports
3. Provide Comments
 - Review Purpose and Need
 - Indicate Project Involvement
 - Review Project Effects
 - Review AN Package



Home > Preliminary Environmental Discussion Report

Environmental Screening Tool

Active Project: 14446 - SR 429 Widening from north of I-4 to Seidel Road PD&E Study

Preliminary Environmental Discussion Report

- Social and Economic
- Cultural and Tribal
- Natural

Wetlands and Surface Waters

Analysis Area

Areas: Alternative #1

Degree of Effect: Minimal

The 2019 U.S. Fish and Wildlife Service National Wetlands Inventory Areas GIS data indicate there are approximately 273 acres of Palustrine Wetlands, and 1 acre of Riverine Wetlands within the 500-foot project buffer. The 2011-2017 SFWMD Wetlands GIS data indicate there are approximately 95 acres of mixed wetland hardwoods.

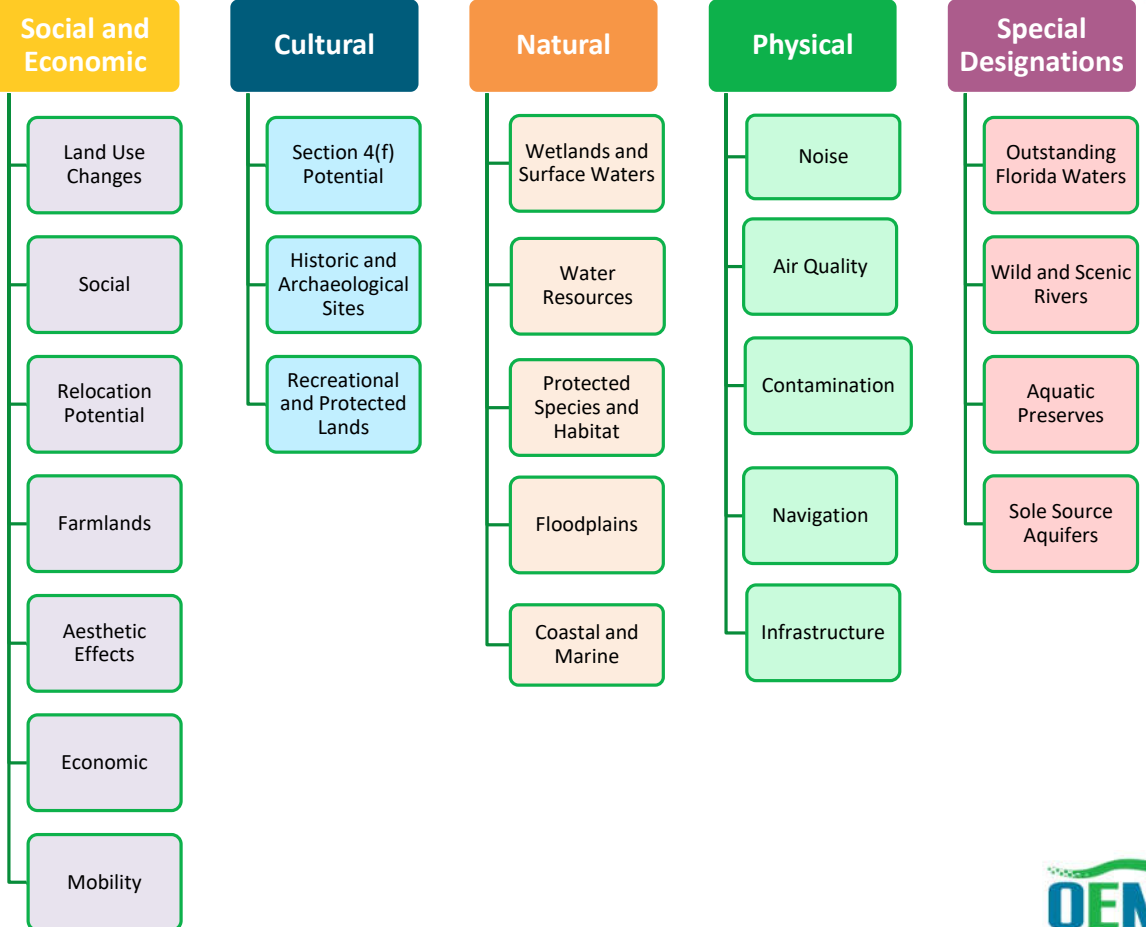
Much of the project corridor is developed. However, there are several locations where the existing roadway bisects existing wetland systems. These areas include existing crossings of wetland systems associated with Bear Bay and Davenport Creek Swamp. Impacts to the systems are likely to require mitigation following the appropriate avoidance and minimization measures.

Minimal involvement with wetlands is anticipated.



What Does the ETAT Review?

Environmental Considerations



What Do the ETAT Regulatory Comments Tell Us?

- Provide detailed information on topics
- Highlight critical path issues
- Specify fatal flaws and potential controversies
- Identify potential avoidance, minimization and mitigation opportunities
- Assist with development and refinement of reasonable alternatives
- Recommend commitments
- Identify anticipated permits
- Provide coordination Information
- Identifies Cooperating and Participating Agencies



WATERSS Expands the Roles of ETAT Agencies

Existing Regulatory Comment Role

- Comments on expected impacts and permit requirements
- Degrees of effect

New Resource Improvement Role - WATERSS

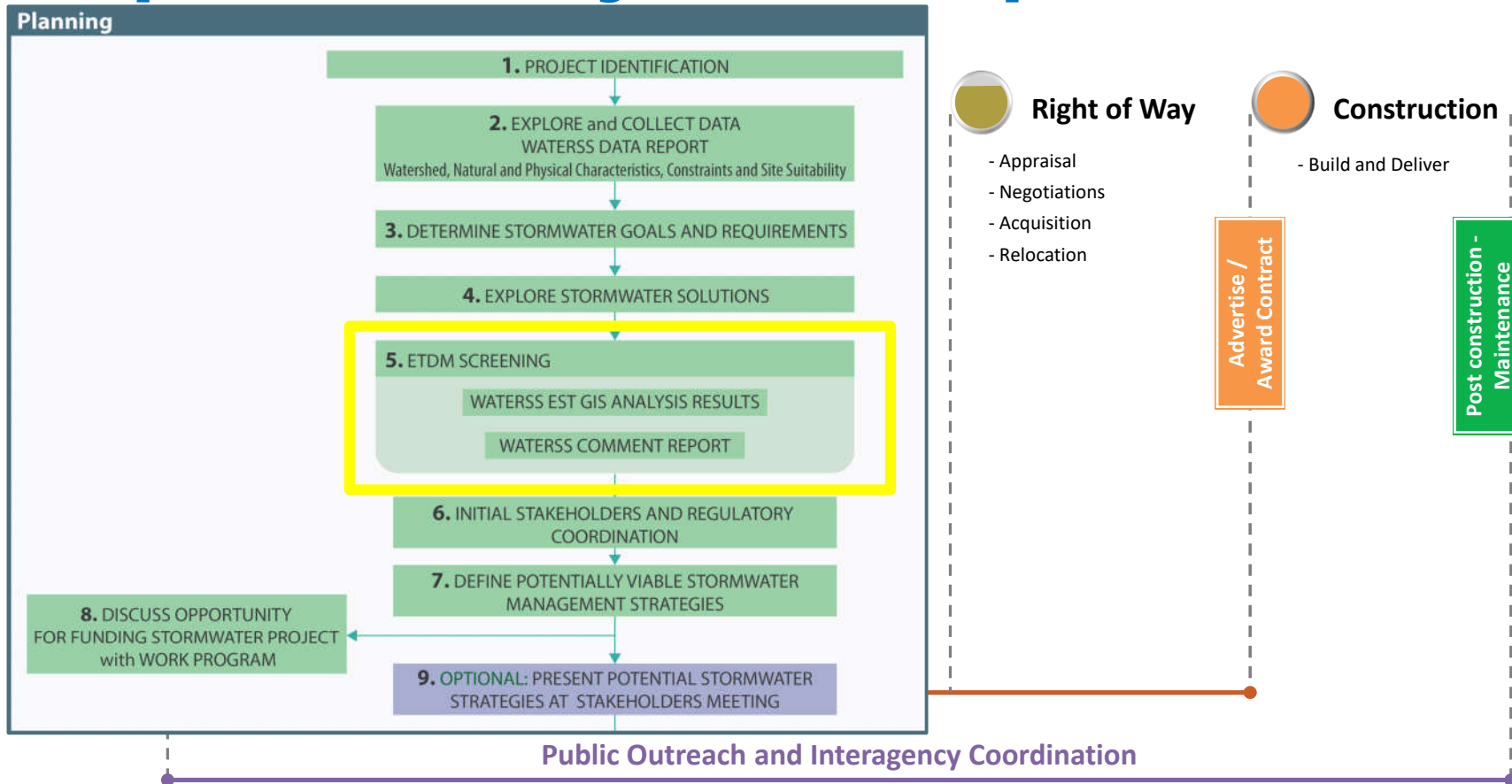
- Identify regional pond opportunities
- Identify direct resource improvement strategies
- Identify and possibly facilitate partnership opportunities

Effects

vs.

Opportunities

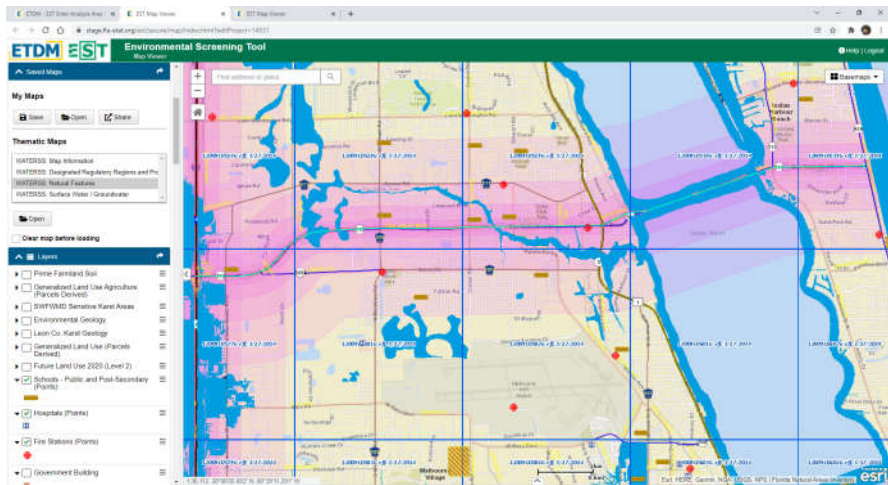
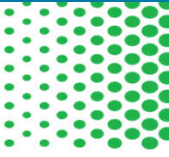
Transportation Project Development Process



ACRONYMS:
 1 Long Range Transportation Plan
 2 Cost Feasible Plan
 3 Transportation Improvement Plan



What Does the Resource Improvement Role Review?



WATERSS Thematic Maps – EST Map Viewer

WATERSS Summary Report

Category	Item	Value	Unit	Notes
Wetlands and Surface Waters	Wetlands	273	acres	
	Surface Waters	15	acres	
	Wetlands	273	acres	
	Surface Waters	15	acres	
Soil	Soil	15	acres	
	Soil	15	acres	
	Soil	15	acres	
	Soil	15	acres	

WATERSS Summary Report

Preliminary Environmental Discussion Report

Wetlands and Surface Waters

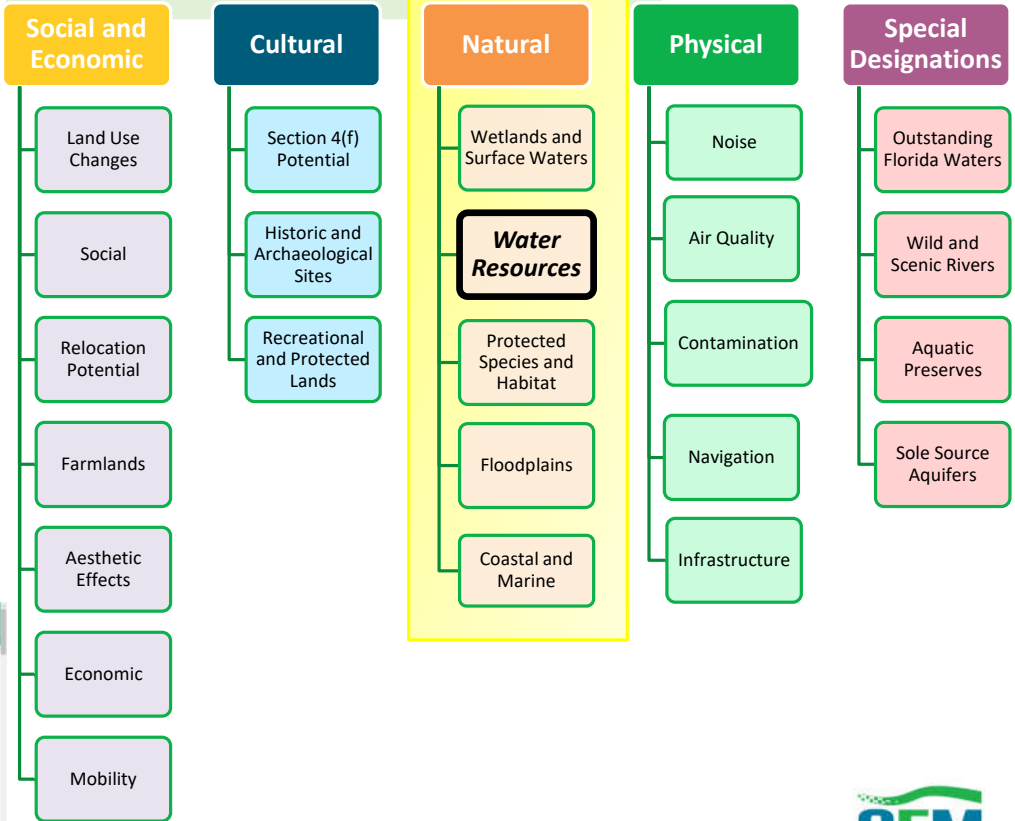
Analysis Area: **Area: 15.000000**

Degree of Effect: **Low**

The 2015 U.S. Fish and Wildlife Service National Wetlands Inventory Area GIS data indicate there are approximately 273 acres of Palustrine Wetlands, and 15 acres of Riverine Wetlands within the 500-foot project buffer. The 2015-2017 SPMAD Wetlands GIS data indicate there are approximately 45 acres of mixed wetland habitats.

Preliminary Environmental Discussion Report

Environmental Considerations



What *Could* ETAT WATERSS Comments Tell Us?

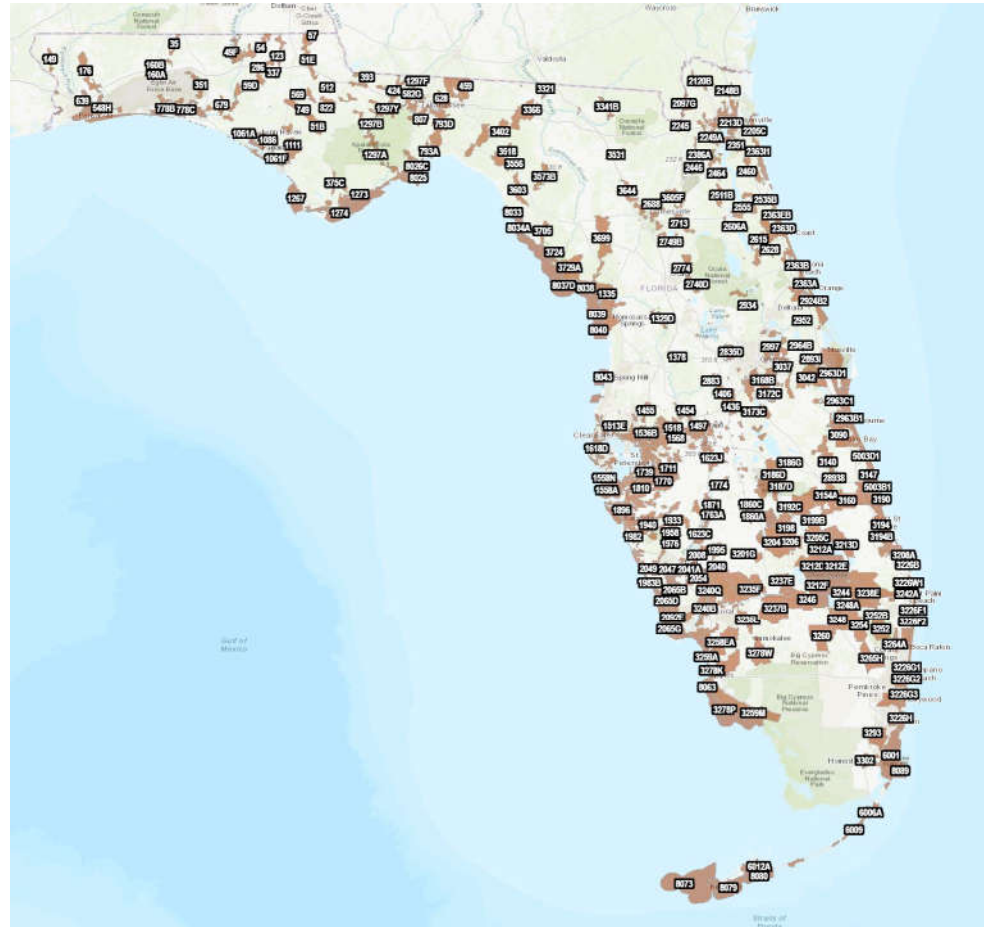
Evaluate watersheds/springsheds for enhanced environmental benefit through direct resource improvement strategies:

- ◆ WMD resource improvement efforts
- ◆ MFL needs
- ◆ Wetland re-hydration
- ◆ Groundwater recharge
- ◆ City/County planned regional ponds and water parks
- ◆ Septic conversions
- ◆ DRI improvements
- ◆ NEP projects
- ◆ BMAP projects
- ◆ Other innovative stormwater projects

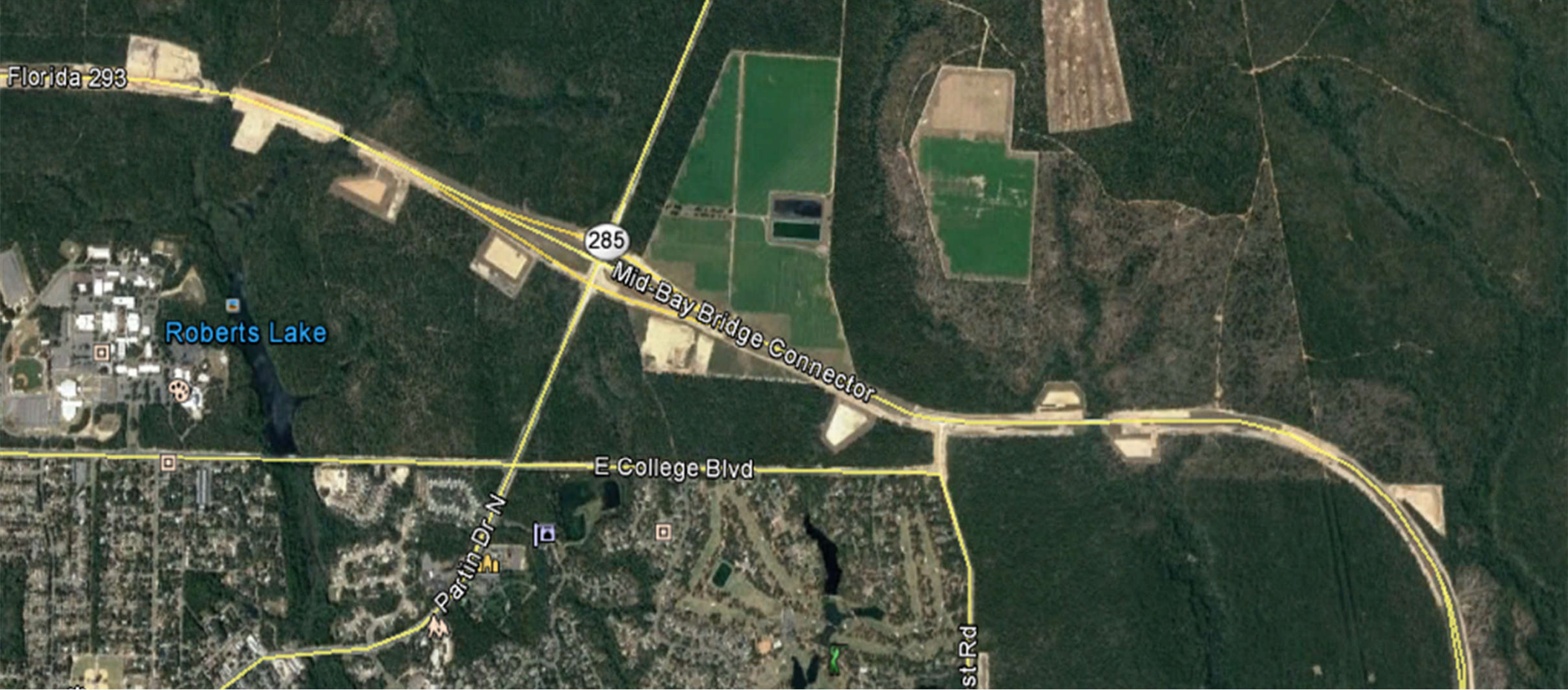
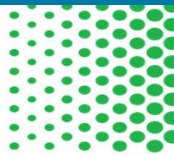
Common Theme: Enhanced Environmental Benefit

Why Pursue WATERSS?

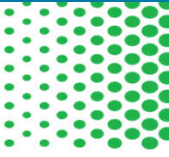
- Data is showing increased nutrient impairments in Florida waters.
- Statewide stormwater rulemaking is seeking to address this...coming soon.
- FDOT is interested in early and continuous collaboration with our partners to develop innovative stormwater solutions.



Why Pursue WATERSS?



WATERSS Addresses Obstacles



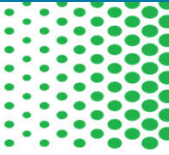
Internal FDOT Organizational Obstacles

- 💧 Schedule inflexibility
- 💧 Partnerships often start too late to meet project schedules
- 💧 Difficulty in mobilizing early funding for partnerships and right-of-way

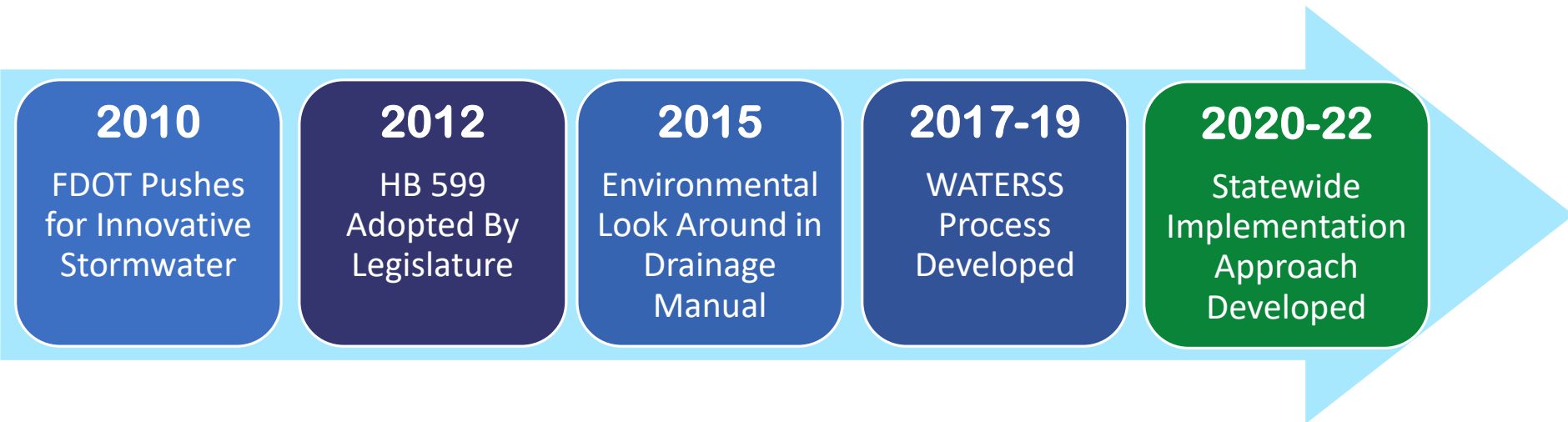
External Obstacles

- 💧 Awareness of partnership opportunities
- 💧 Partnership limitations and/or uncertainties
- 💧 WMD permits are more vulnerable to challenge on innovative projects

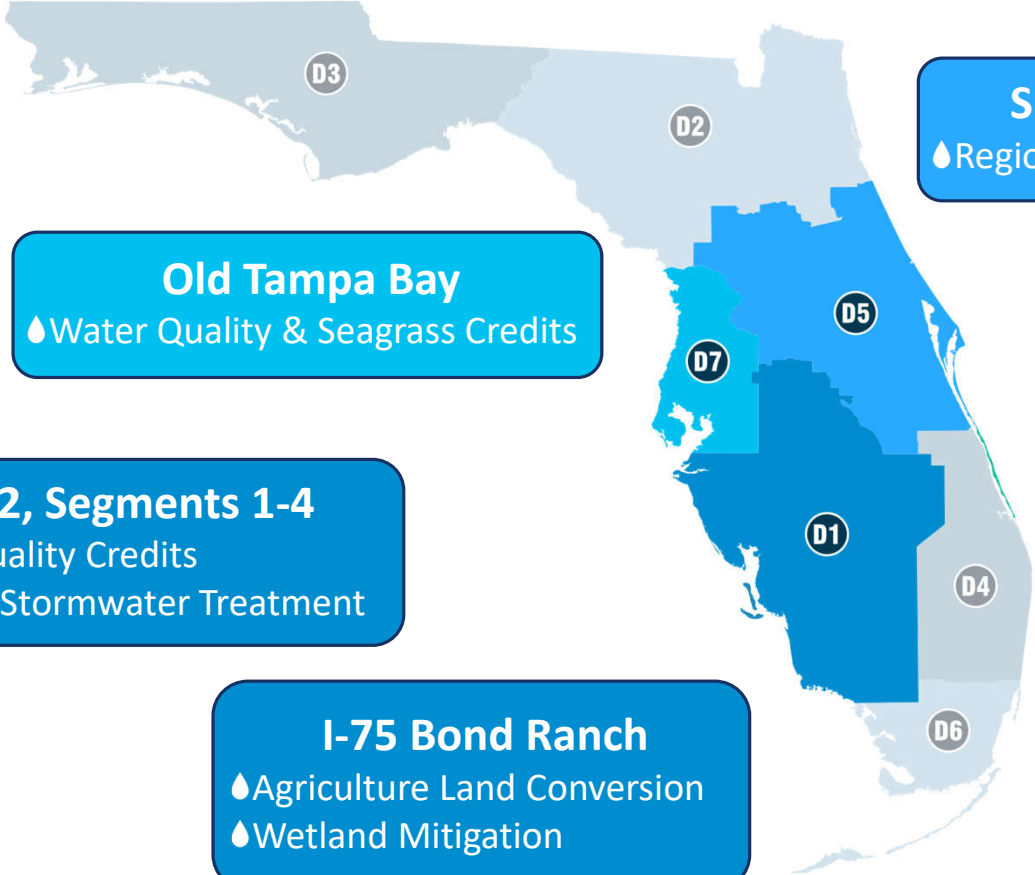
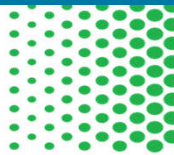
How Did We Get Here?



FDOT's Pursuit of Better Stormwater Management



Innovative Strategies & Savings



How Can the ETDM Process Benefit **WATERSS**?

Early Agency
Coordination and
Consultation

Better Access to
Information on
Innovative Opportunities
and Potential Partners

Informs Decisions as the
Project Moves into the
PD&E Phase

Focused Stormwater
Evaluations Early in
Project Development

Saved Maps

My Maps

Save Open Share

Thematic Maps

- WATERSS: Overview
- WATERSS: Map Information
- WATERSS: Designated Regulatory Regions and Pro...
- WATERSS: Natural Features

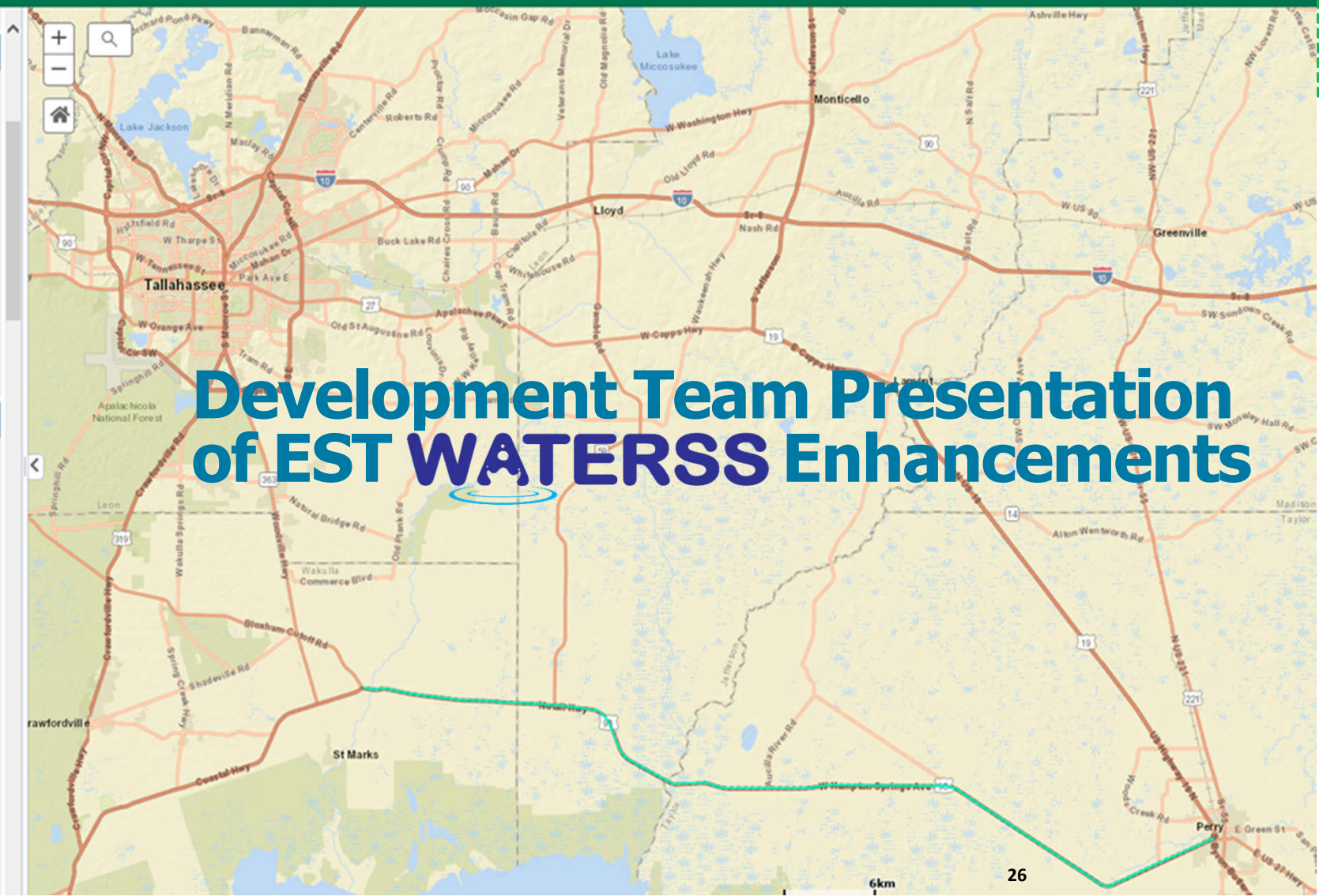
Open

Clear map before loading

Layers

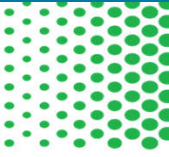
Clear Turn off all layers

- Adopted MFLs
- Aquifer
- Estuary
- Lake
- River
- River, Estuary
- Spring-1
- Spring-2
- Spring-3
- Wetland
- Swallets
- FDEP Springs
- First Magnitude



Development Team Presentation of EST WATERSS Enhancements

ETDM Public Access Site – Subscribe to Updates



Search FDOT... [E-Updates](#) | [FL511](#) | [Mobile](#) | [Site Map](#)

[Home](#) [About FDOT](#) [Contact Us](#) [Offices](#) [Maps & Data](#) [Performance](#) [Projects](#)

Environmental Screening Tool



Search ETDM Public Site for... [Site Search](#)

[Welcome](#) [ETDM Program Information](#) [Project Information](#) [ETDM Contacts](#)

[View Interactive Map](#)

- [First Time Users](#)
- [Online Help](#)
- [FAQs](#)
- [What's New](#)
- [Subscribe/Unsubscribe](#)
- [Site Map](#)
- [Home](#)
- [How-To Videos](#)

Subscribe / Unsubscribe

Get Involved

Participate in Public Involvement Opportunities

The Florida Department of Transportation (FDOT) provides opportunities for you to learn about transportation projects in your area. You are invited to attend these events. To obtain a list of upcoming events in your area, visit the [FDOT Public Involvement Web site](#). You can also provide comments about projects outside of these formal activities by contacting your local [Metropolitan Planning Organization](#) or [FDOT District Office](#). Click on the "Contact Us" option at the bottom of the page for a list of names, addresses, telephone numbers and email address.

Stay Connected

Register below to sign up for the ETDM email list to receive email notifications when updated information is available, or [unsubscribe](#).

Returning Subscribers

If you are an existing subscriber, please enter your email address to load your subscription information.

[Load Existing Preferences](#)

New Subscribers

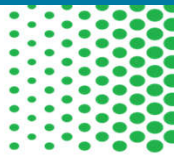
[Create Subscription](#)

Help

Subscribe
Sign up to receive email notices when projects of interest are updated. You may select specific projects or receive notices about all projects in an FDOT District or county.

Unsubscribe
Unsubscribe to the ETDM Public Site email distribution list.





Please fill out your information:

*Required Fields are marked with an Asterisk

First Name: Optional

Last Name: Optional

Address: Optional

City: Optional

State: Optional

Zip: Optional

*Email Address:

Check the options below to indicate the type of notices you would like to receive:

- Yes, send me an email when general ETDM information is updated, such as manuals and guidance.
- Yes, send me an email when the ETDM Web site is updated.
- Yes, send me an email when new information is available about ETDM projects, as indicated below:

Watch the Following Projects:

**Separate each project ids with a comma

- Watch the project that I currently have selected in the Project Search box.
- Watch all WATERSS (Watershed Approach to Evaluate Regional Stormwater Solutions) Projects
- Watch all projects that meet the following criteria below:

Region:

--All-- Selected region(s): --All--

- District 1 - Charlotte County
- District 1 - Collier County
- District 1 - Desoto County
- District 1 - Glades County
- District 1 - Hardee County

Degree of Effect:

--All-- Selected Degree(s) of Effect: --All--

- N/A / No Involvement
- None
- Enhanced
- Minimal

Issue:

--All-- Selected Issue(s): --All--

- Aesthetic Effects
- Air Quality
- Coastal and Marine
- Contamination

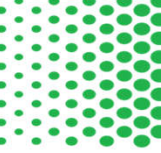
Disclosure: Please view the [FDOT Privacy Statement](#). Check the box if you agree to this statement.

- I agree.

Save Subscription

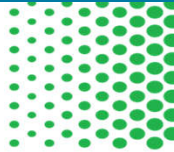


Questions / Discussion

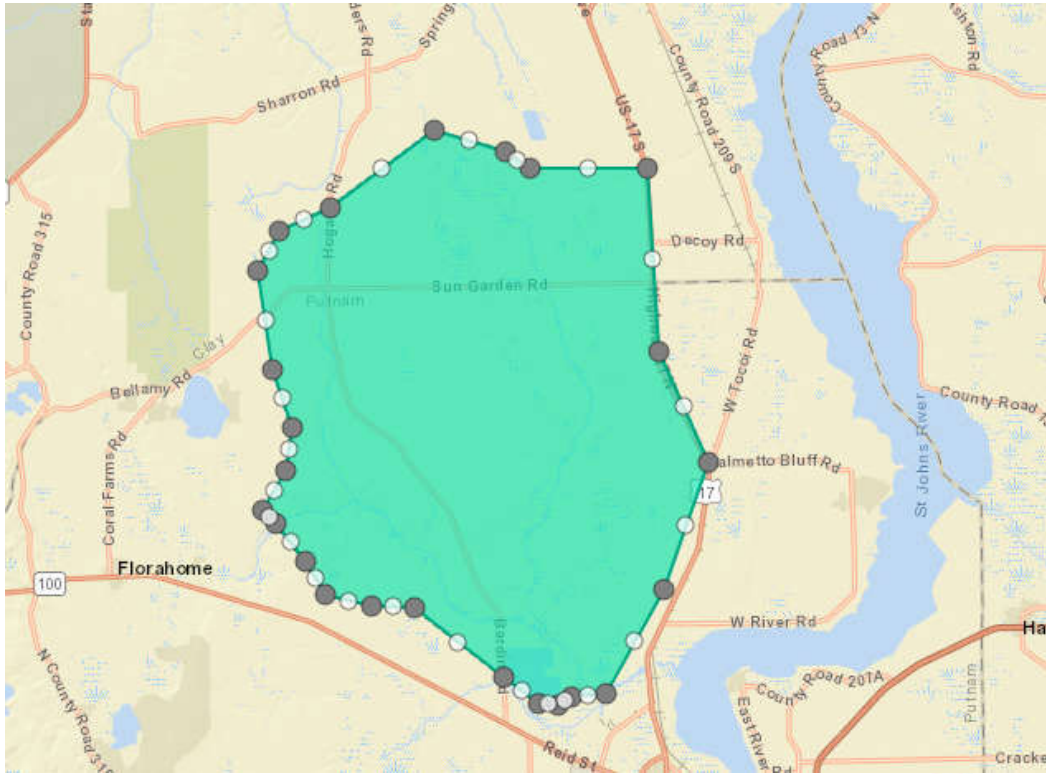
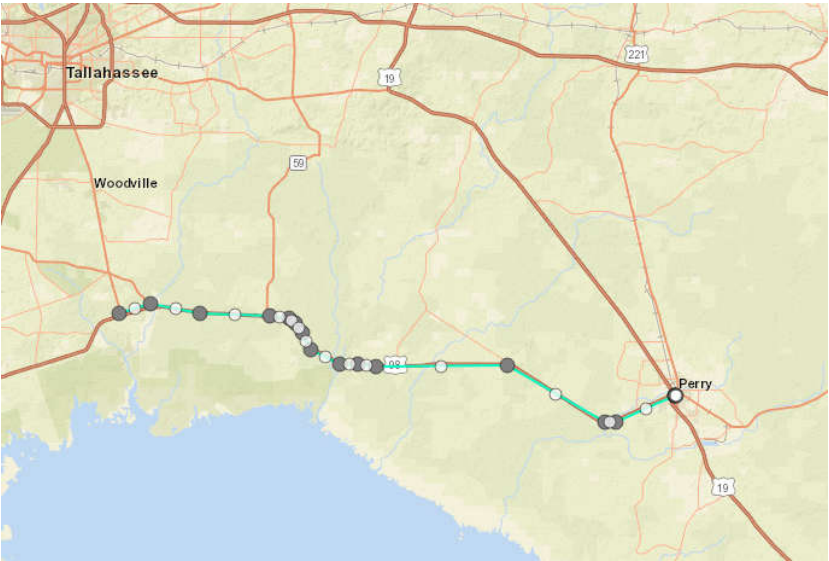


- 💧 Based on what you've seen today, does this approach effectively communicate with both the regulatory and resource improvement divisions of the ETAT agencies?
- 💧 Can you see your agency using this piece of the ETDM process to advance resource improvements? If so, how?
- 💧 Do you have feedback on this approach for gaining information on potential opportunities?

Generation of WATERSS Analysis Report



- Project Buffer
- WATERSS Review Area



Next Steps...

- 💧 WATERSS Process Guidebook
 - 💧 Published September 2021
 - 💧 FDOT PD&E Documents & Publications website:
<http://www.fdot.gov/environment/publications.shtm>
- 💧 Future WATERSS implementation phases will include appropriate trainings.
- 💧 Coming Soon - WATERSS review will be implemented in the upcoming FDOT District 2 Northern Arterial Corridor Program (NACP) Segment 1 Programming Screen this Spring.

Contact

FDOT Office of Environmental Management

605 Suwannee Street, MS 37 Tallahassee, FL 32399-0450



Catherine Bradley
State Environmental Development Engineer



Phone: 850-414-5209



Email: catherine.bradley@dot.state.fl.us



Pete McGilvray
State Environmental Quality and Performance
Administrator



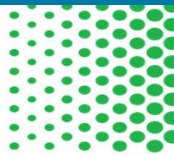
Phone: 850-414-5330



Email: peter.mcgilvray@dot.state.fl.us



Questions & Concerns



Thank you for your participation!

