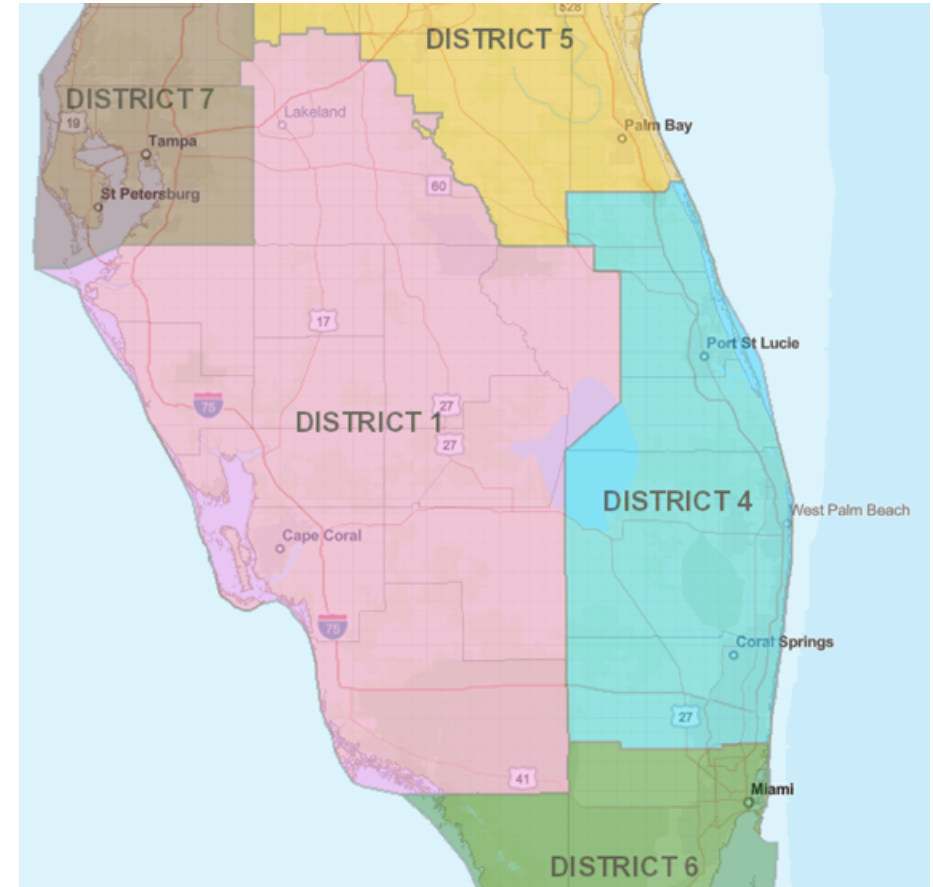




District One ETDM Project Updates

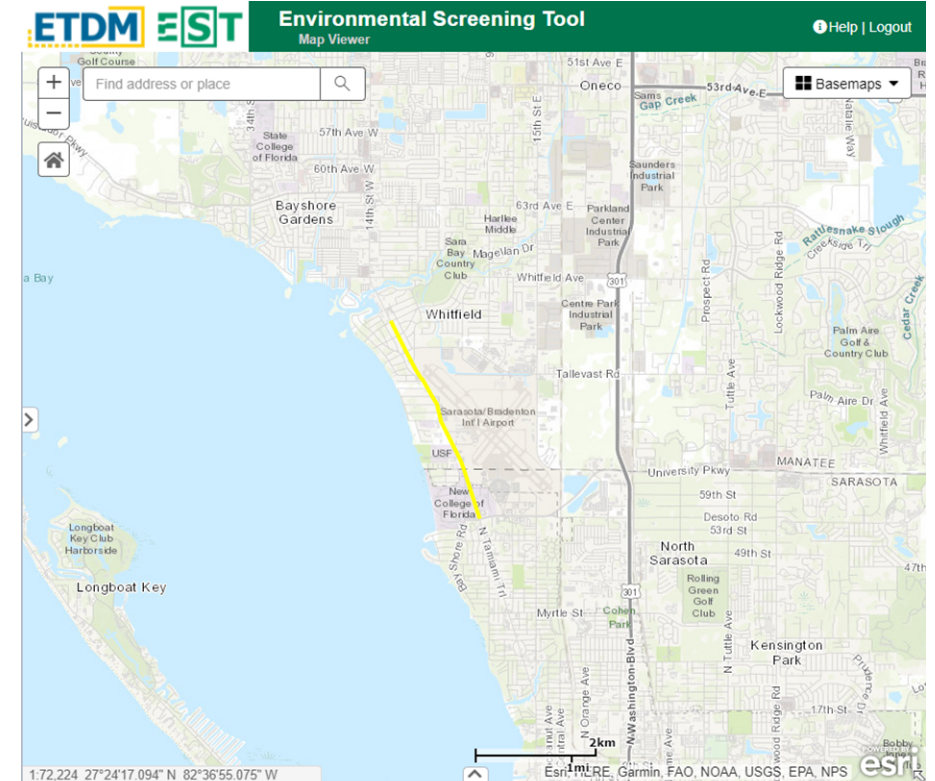
Jonathon Bennett
ETDM Coordinator



ETDM # 14422

US 41 Complete Street from University Parkway to Pearl Avenue

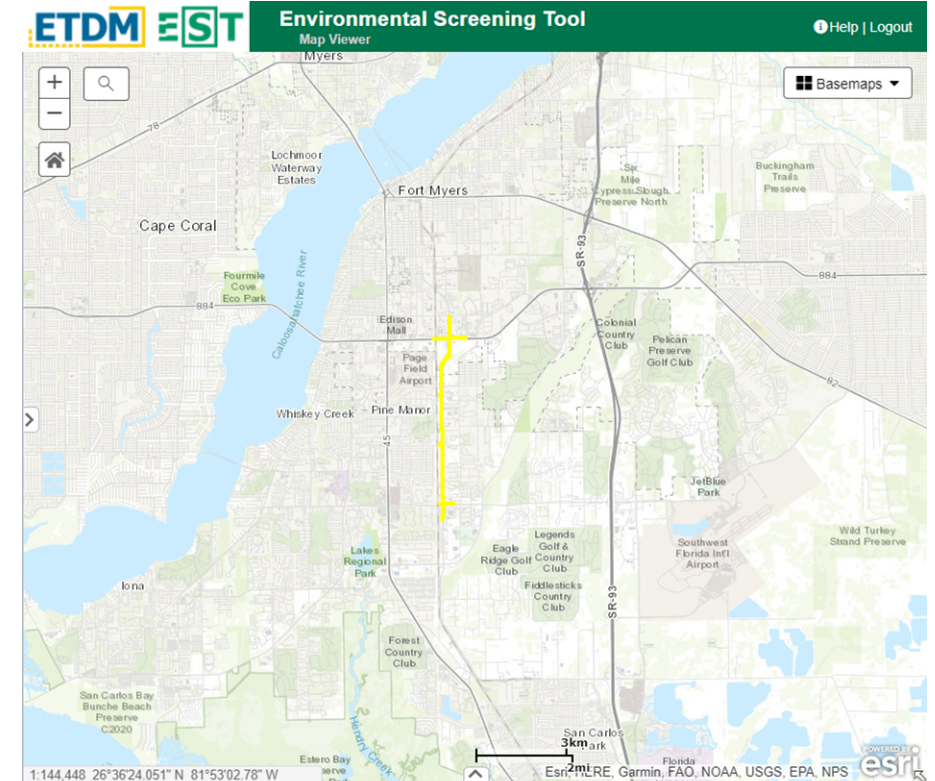
- Counties: Sarasota & Manatee
- Scope: Complete Street with intersection improvements
- Status: Currently in ETAT Review



ETDM # 14467

SR 739 (Metro Parkway) from South of Daniels Parkway to Winkler Avenue

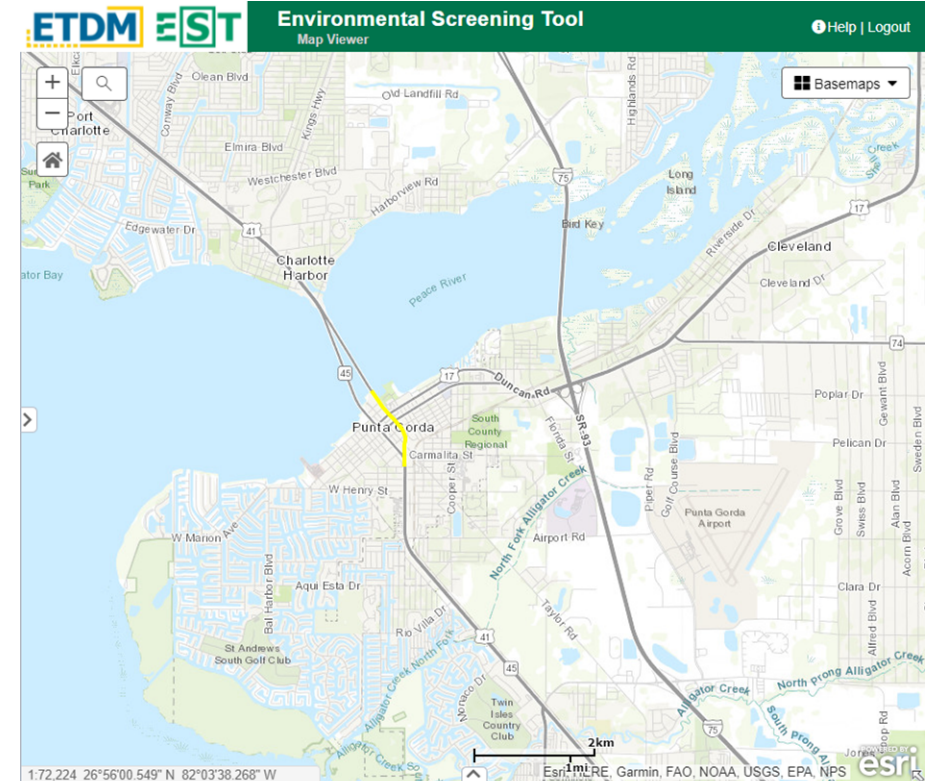
- County: Lee
- Scope: Widening
- Status: Scheduled for screening in July



ETDM # 14466

US 41 Complete Street from William Street to Peace River Bridge

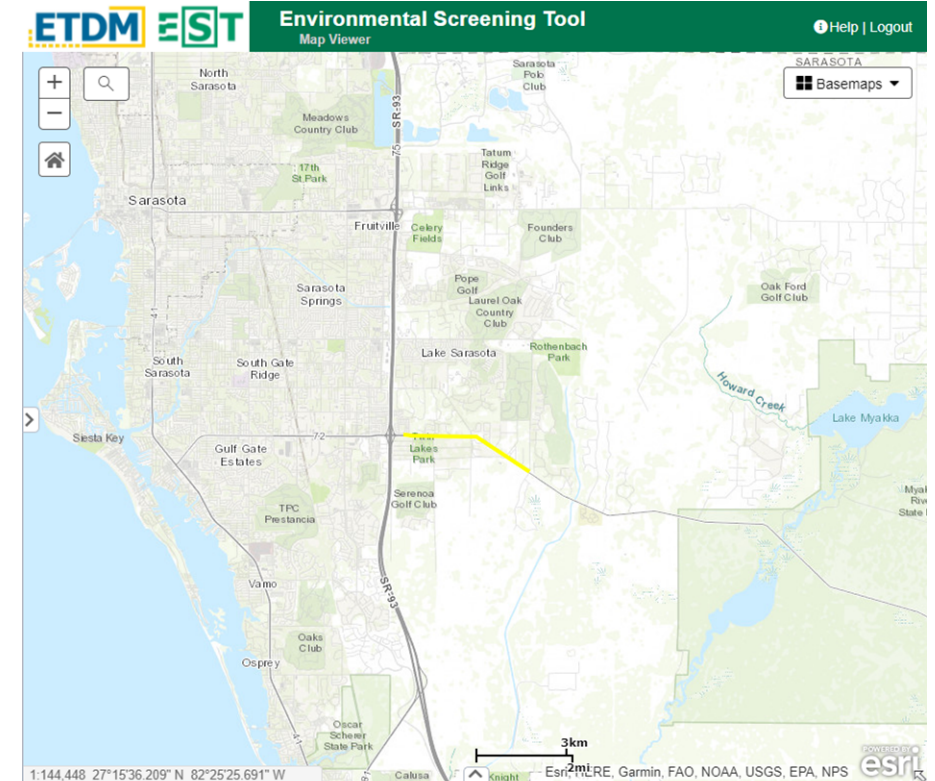
- County: Charlotte
- Scope: Complete Street with intersection improvements
- Status: Scheduled for screening in July



ETDM # 14441

SR 72 (Clark Road) from East of I-75 to Bee Ridge Road Extension

- County: Sarasota
- Scope: Widening
- Status: Scheduled for screening in the coming months





District Two ETDM Project Updates

Aja Stoppe
ETDM Coordinator



I-95 Corridor Projects

International Golf Parkway to I-295

St. Johns and Duval Counties

FPID #422938-8 & -9, 424026-4 & 5

ETDM #11440 (completed 2009)

Reevaluation Public Hearing – Summer 2021

Currently Design phase

Construction – August 2023

I-295 to SR 202 (JTB Boulevard)

Duval County

FPID # 435577-2 & 446153-1

ETDM #14278 (completed 2016)

Public Hearing - July 2021

Currently PD&E/Design phases

Construction – March 2023

SR 202 (JTB Boulevard) to Atlantic Boulevard

Duval County

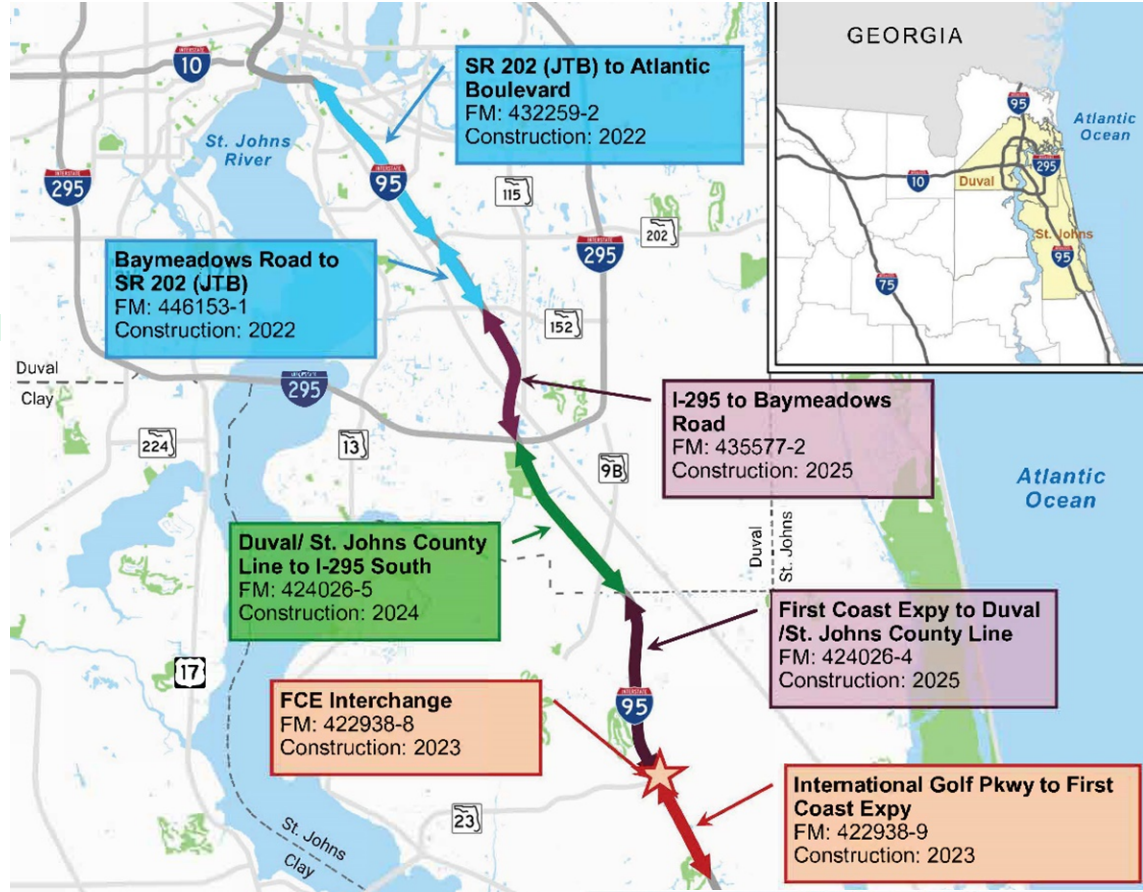
FPID #432259-2

ETDM #14273 (completed 2016)

Reevaluation Public Hearing – July 2021

Currently Design phase

Construction – March 2023



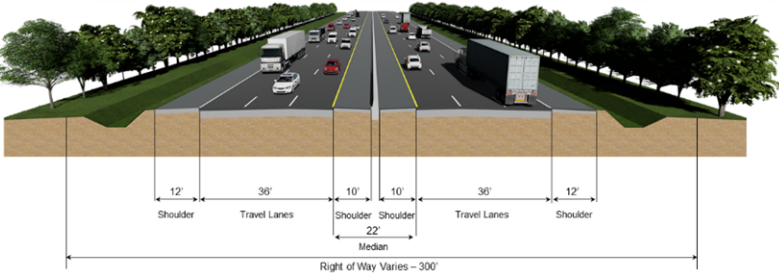
- Design changes from express lanes to general use lanes.
- Reduced ROW
- Reduced cost
- Reduced environmental impacts



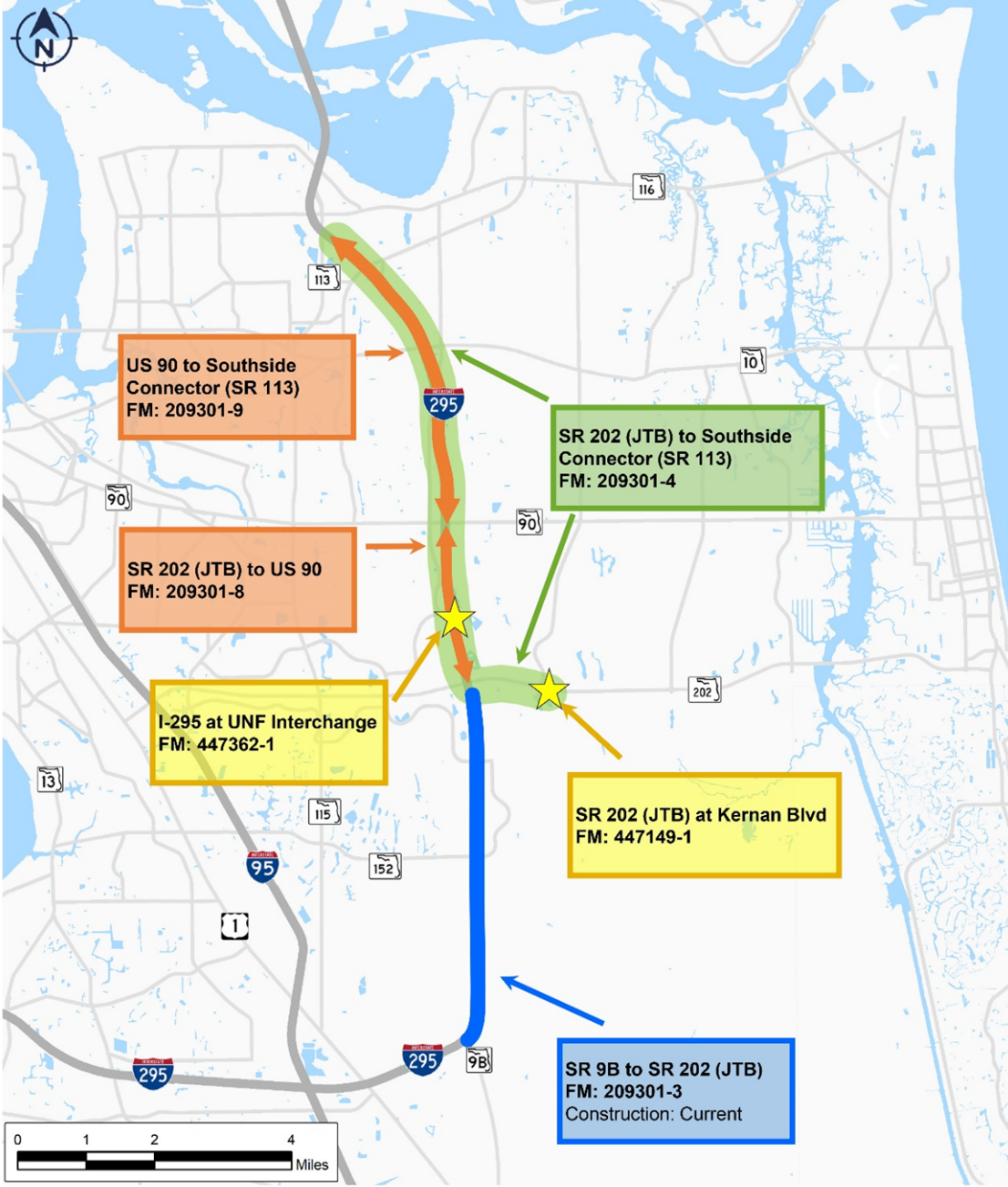
I-295 Corridor Projects

SR 9B to SR 202 (JTB Boulevard)
 Duval County
 FPID #208301-3
 ETDM #13983 (completed 2013)
 Construction – Underway (Express Lanes)

SR 202 (JTB Boulevard) to Southside Connector (SR 113)
 Duval County
 FPID # 208301-4
 ETDM #13984 (completed 2013)
 Currently PD&E/Design phases
 Construction – October 2024



Proposed typical section St. Johns Bluff Road to Atlantic Boulevard





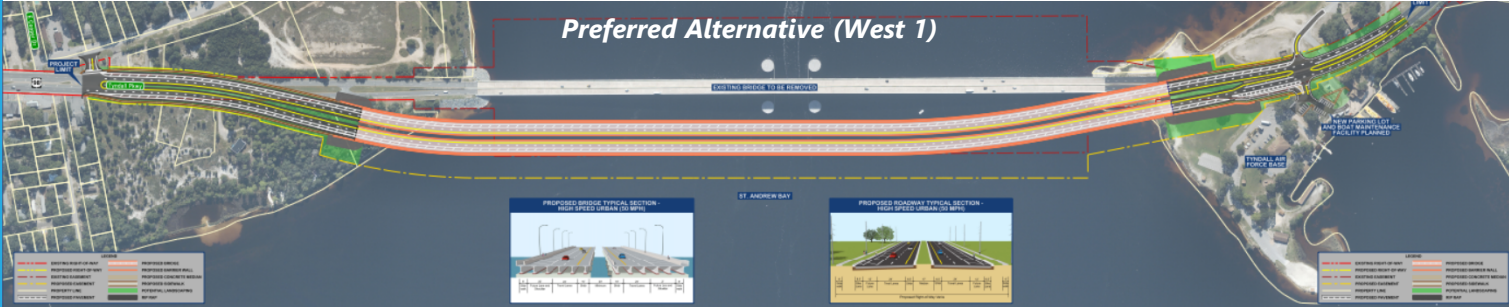
District Three ETDM Project Update

Tori White
ETDM Coordinator



**DuPont Bridge Replacement
Bay County
ETDM #14347
FPID # 442667-1
ETAT Review Complete:
March 5, 2018**

- Spans Intracoastal Waterway
- connects Tyndall AFB and the City of Parker Limits - US 98 from the Bonita Bay Outdoor Recreation Center within Tyndall AFB to Oak Shore Drive
- Project Length - approximately one mile

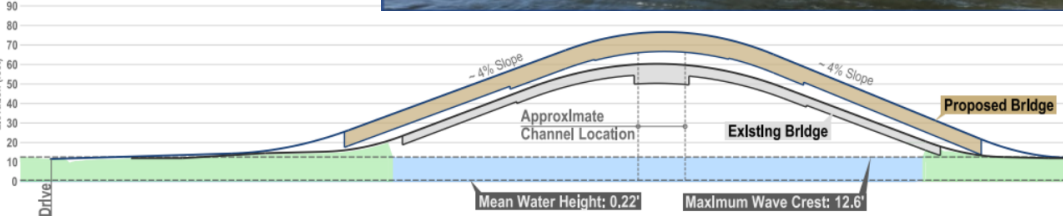


- Current bridge constructed in 1965
- Structurally deficient and operationally obsolete
- Vertical clearance does not meet USCG minimum clearance requirements (65-feet)
- Does not meet ADA pedestrian/bicycle requirements
- Public Hearing was held February 9, 2021
- Construction funded in 2024

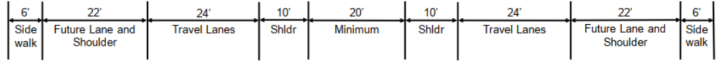


Existing bridge

Bridge profile



Bridge rendering



Proposed typical section

FDOT District 4 – Project Spotlights

Virtual ETAT Meeting

May 26, 2021

Shandra Davis-Sanders
ETDM Coordinator

SW 10th Street Connector PD&E Study

County: Broward

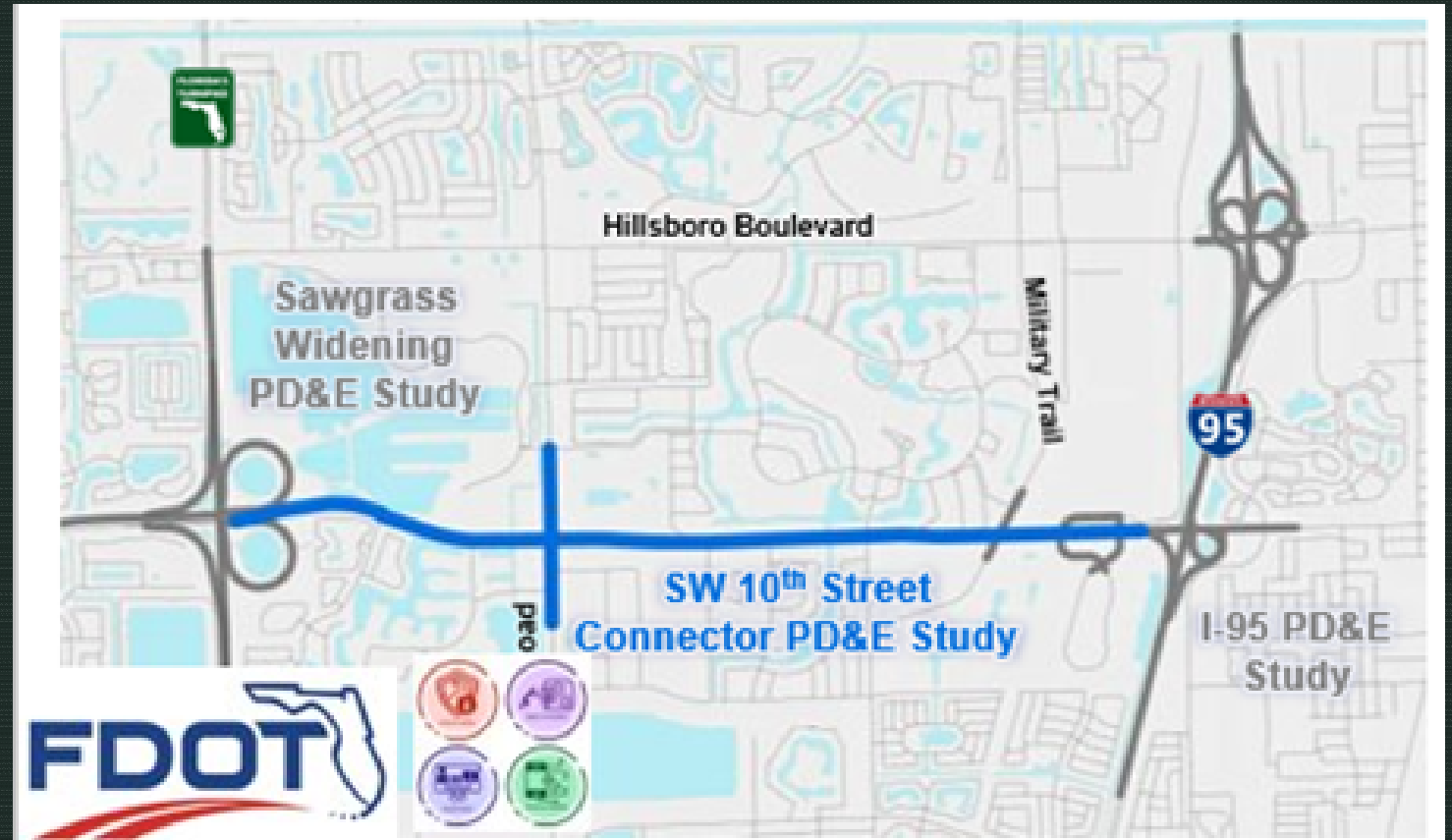
FM: #439891-1, **ETDM:** #14291

COA: Type 2

LDCA: Anticipate June 30, 2021

Overview

- Create a limited access connection between the Sawgrass Expressway and I-95
- Two adjacent projects:
 - Sawgrass Widening PD&E (FTE)
 - I-95 from South of NE 48th Street to North of Hillsboro Boulevard PD&E (District 4)
- Public Hearings held 10/12/20 to 10/15/20 with 2 Build Alts
- Preferred Alternative selected
- Type 2 and PER have being reviewed by OEM
- RFP Development Ongoing
- Construction 2024



I-95 from South of NE 48th Street To Hillsboro Blvd. PD&E Study

County: Broward

FM: #436964-1, **ETDM:** #14244

COA: Type 2

LDCA: Anticipate August 2021

Overview

- Provide direct connect ramps from SW 10th Street to I-95 EL and General use lanes
- Adjacent project: SW 10th Street Connector Study PD&E (District 4)
- Public Hearings held 10/12/20 to 10/15/20 with 2 Build Alts
- Preferred Alternative selected
- RFP Development Ongoing
- Construction 2024



SR A1A Over Sebastian Inlet – Bridge 880005 Bridge Replacement PD&E

County: Indian River/Brevard
FM: #445618-1, **ETDM:** #14244
COA: Type 2
LDCA: Anticipate May 2023

Overview

- Evaluate bridge replacement alternatives
- Address structural and functional deficiencies
- Gap in system linkage for bicyclists and pedestrians
- Agency Public Kickoff Meeting May 2021



District 5 ETDM Project Updates

KATHALEEN LINGER

ETDM COORDINATOR

Old Lake Wilson Road

ETDM# 14456

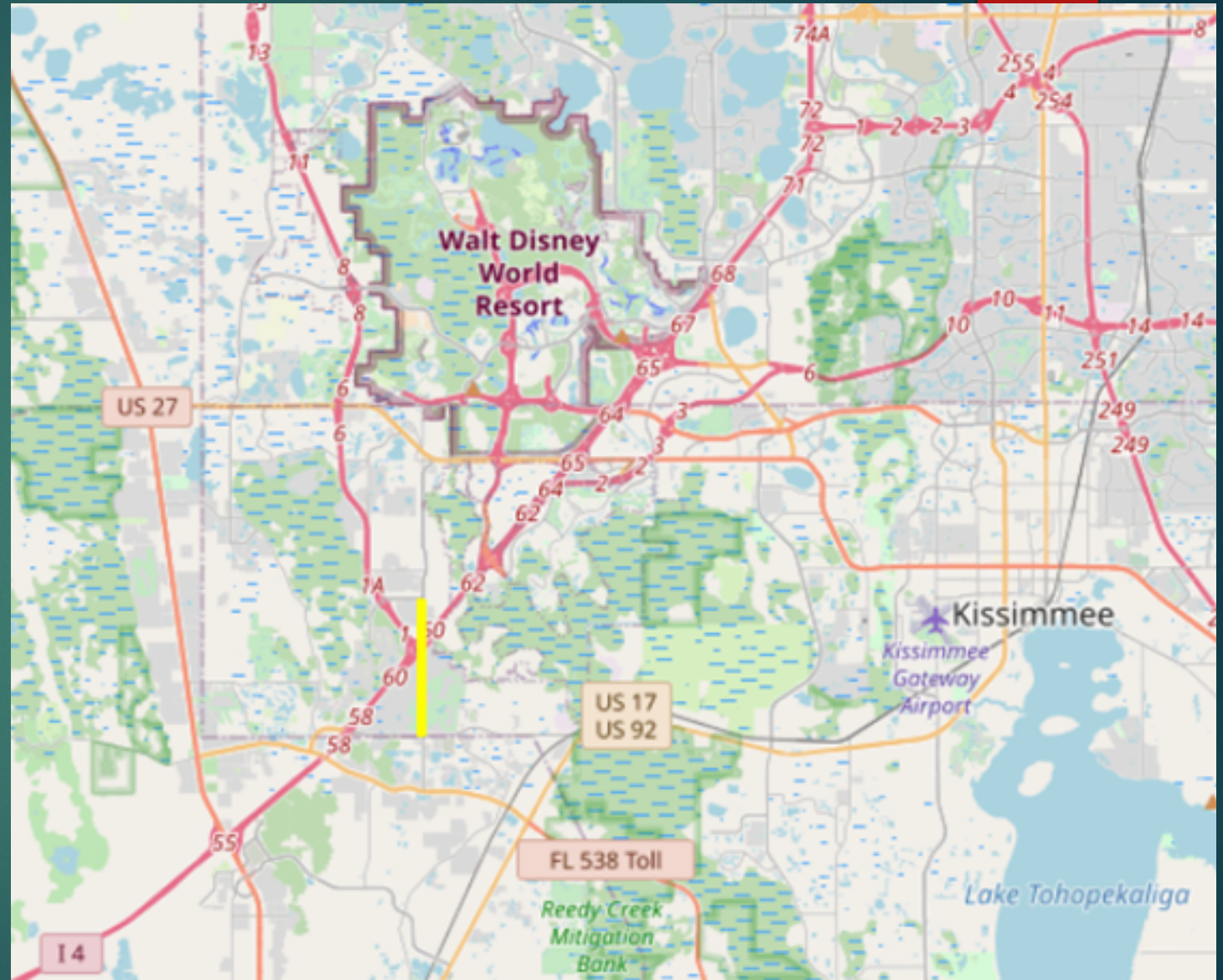
Old Lake Wilson Road from CR 532 to S. of Sinclair Rd (2.49 mi.)

Osceola County

ETAT Review for Programming Screen: June 2021

FDIP# TBD (local project)

This Osceola County project involves the two-lane to four-lane widening of Old Lake Wilson Road from County Road 532 (CR 532) to S. of Sinclair Road, a length of 2.49 mi. The project also involves widening or replacing the existing bridge over Interstate 4 (I-4) [Bridge #924179].



St. Johns Heritage Parkway Alternative Corridor Evaluation Study

ETDM# TBD

St. Johns Heritage Parkway Alternative Corridor
Evaluation (ACE) Study

Brevard County

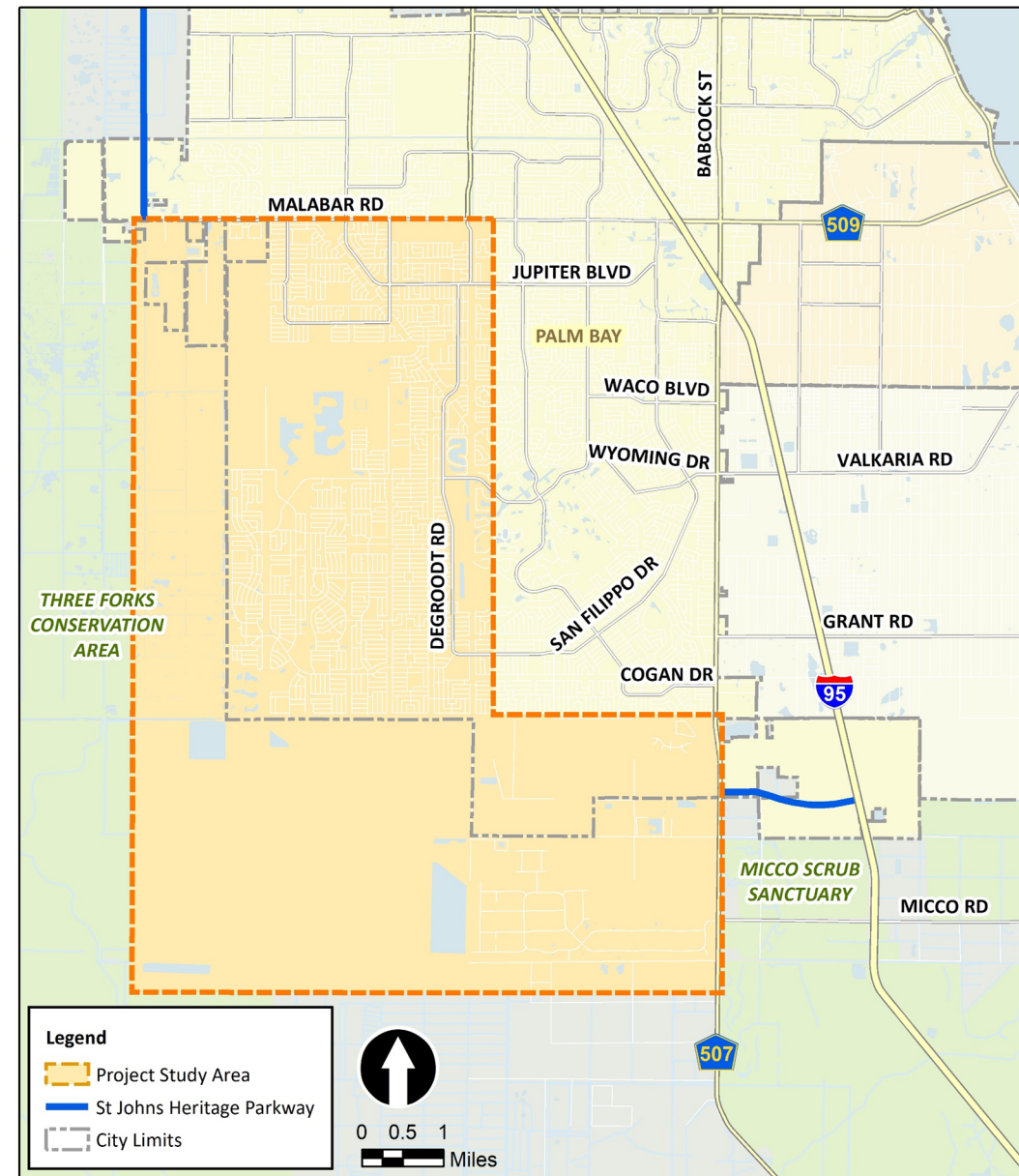
FDIP# 441412-1 (LAP-Local Area Project w/ Brevard Co.)

ETAT Review for Planning Screen/ACE: anticipate late
summer/fall 2021

ETAT Meeting held June 2020

The St. Johns Heritage Parkway (SJHP) is a controlled access facility with approximately 10 miles currently open to traffic. Once completed, the SJHP will result in an approximately 24-mile controlled access facility beginning at the I-95 and SJHP interchange on the south and terminating at the I-95 and Ellis Road interchange on the north.

This project involves evaluating a new transportation corridors that can complete the remaining approximately 14-mile gap in the St. Johns Heritage Parkway (SJHP) between Babcock Street on the south to Malabar Road on the north.



St Johns Heritage Parkway
Alternative Corridor Evaluation (ACE) Study
from Babcock Street to Malabar Road
Brevard County, Florida

Financial Project Identification Number: 441412-1

PROJECT
LOCATION MAP

Canoe Creek Road

ETDM# TBD

Canoe Creek Rd. from U.S. Highway 192/441 to Deer Run Rd (4.65 mi.)

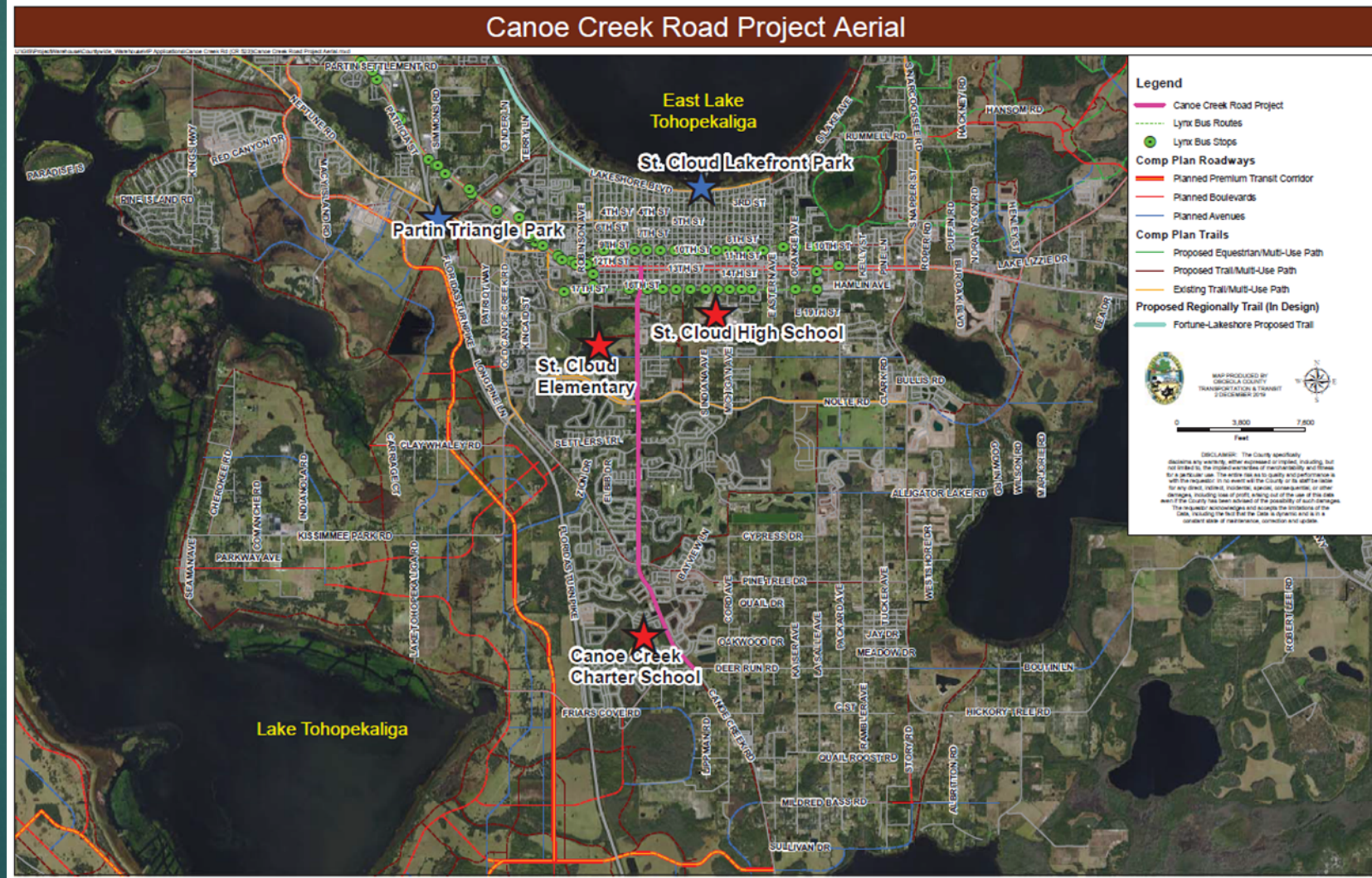
Osceola County

ETAT Review for Programming Screen:

Fall 2021

FDIP# TBD (local project)

This Osceola County project will include the reconstruction of Canoe Creek Road (Urban Major Collector) from a **two-lane rural roadway** to a **four-lane divided urban roadway**. The project limits will extend from U.S. Highway 192/441 to the north and terminate at Deer Run Road to the south, a length of 4.65 miles.



***UPDATE (6/23/21): This project will not need to be re-screened through ETDM since we have ETAT comments that cover the entirety of the current project's shorter limits. A project update notification will be sent out later this year for informational purposes only .**

Limits of potential SR 50 ETDM Programming Screen for late Summer 2021*

State Road 50

ETDM# 14269

SR 50 from CR 478A (Sumter County) to CR 33 (Lake County)

FDIP# 435859-7

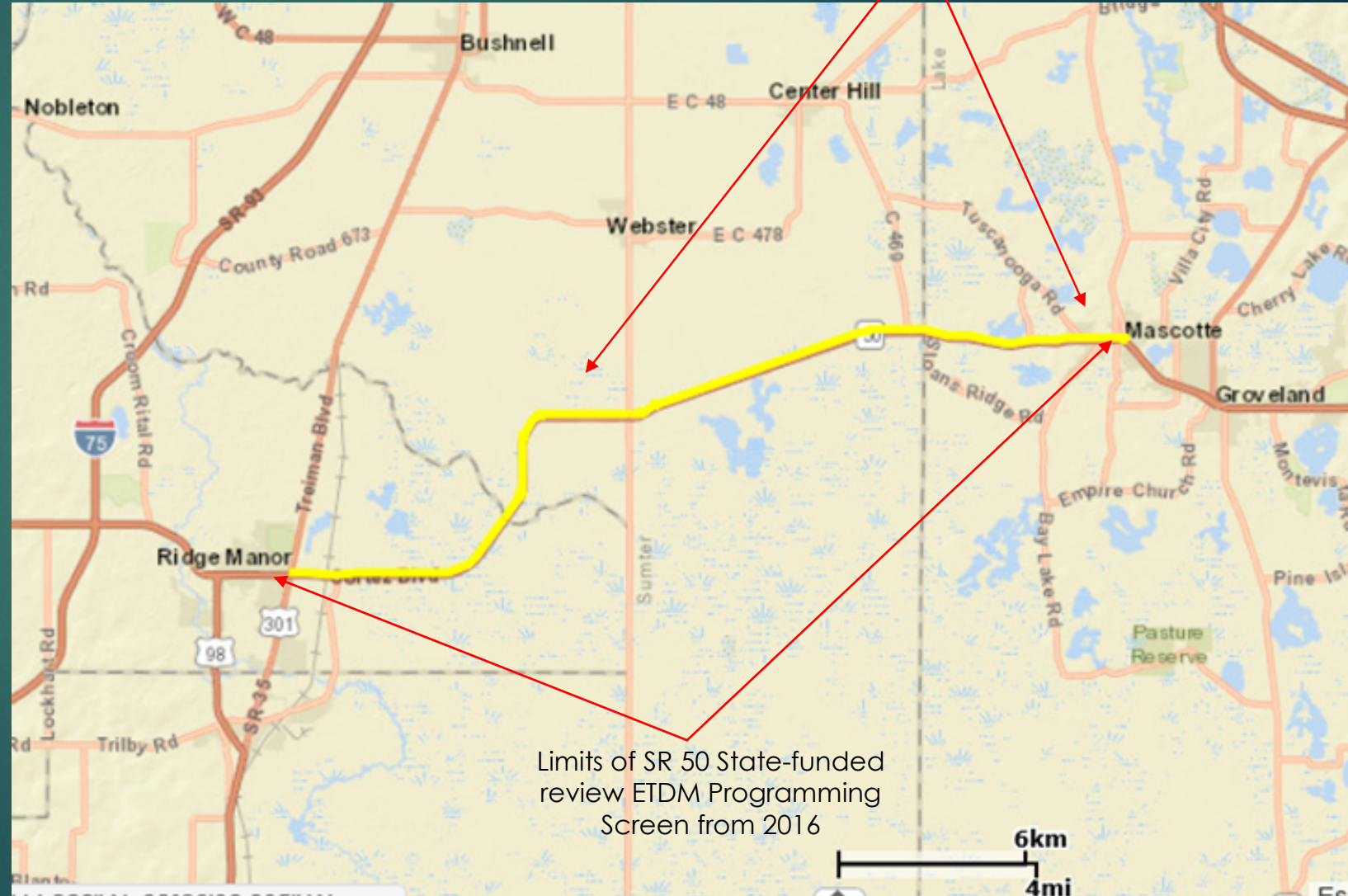
Potential for ETAT Review for Programming Screen –summer 2021*

Converting the State Road 50 PD&E Study from a State Environmental Impact Report (SEIR) to a Type 2 Categorical Exclusion (CE)

-Have an approved SEIR from US 301 in Hernando County to CR 33 in Lake County- screened through ETDM in 2016.

-The PD&E was divided into 4 segments for Design: -2 (in D7) and -3 have gone to production and will be under construction soon

-Segments -4 and -5: CR 478A (Sumter County) to CR 33 (Lake County) are being made eligible for federal funds, and we may send the project through an ETDM Programming screen for the adjusted limits late summer.*



Limits of SR 50 State-funded review ETDM Programming Screen from 2016

6km
4mi

FDOT District Six Project Updates

2021 Virtual Statewide ETAT Meeting
Dat Huynh, ETDM Coordinator

May 26, 2021



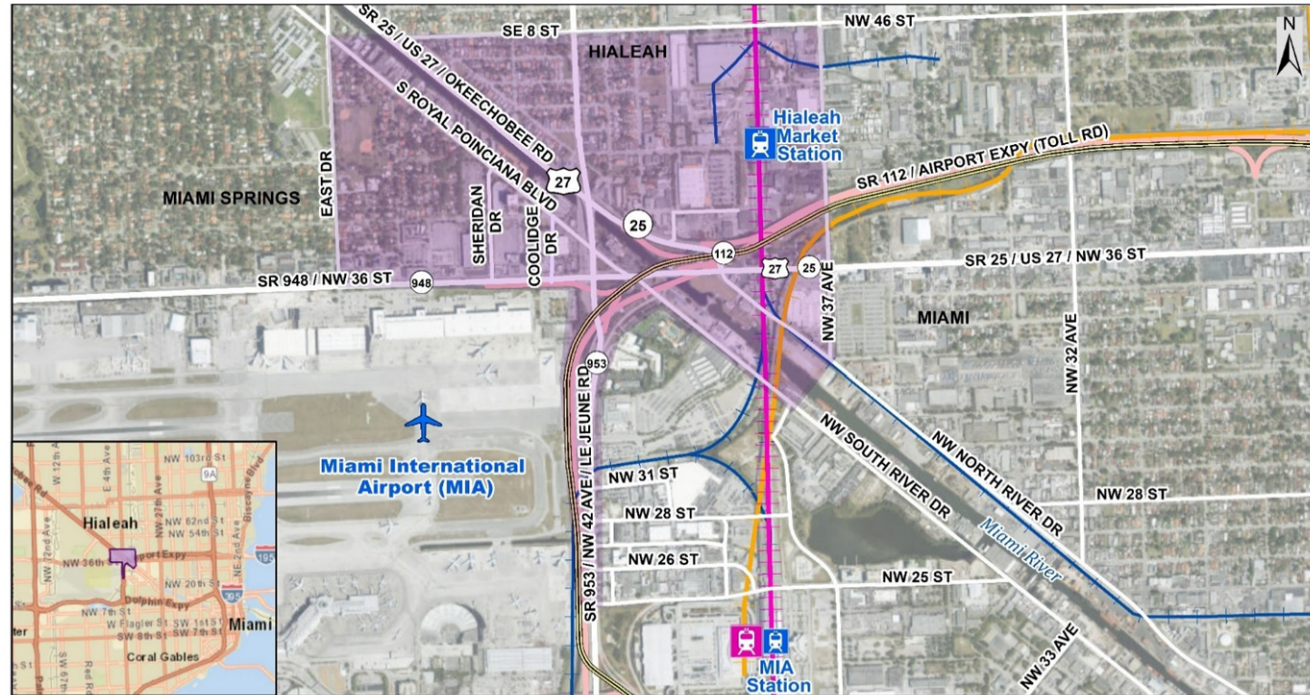
Upcoming ETDM Project

SR 953/NW 42nd Avenue w/ SR 948/NW 36th Street & SR 25/Okeechobee Road

“Iron Triangle Interchange”

[ETDM #14472 / FM #438521-1]

- Lead Agency: FDOT OEM
- Urban Interchange in Central Miami-Dade County
- Proposed Interchange Improvements (ramp improvements & grade separations)



Legend

- | | | |
|--------------------|-----------------------|-------------------|
| Project Study Area | Tri-Rail | Tri-Rail Station |
| Metrorail | Other Railroad System | Metrorail Station |
| | | SIS Highways |

PROJECT LOCATION MAP
SR 953 / NW 42 Avenue with SR 948 / NW 36 Street and
SR 25 / Okeechobee Road – Iron Triangle
Urban Interchange Mobility Planning Study

Financial Project ID 438521-1-22-01
Miami-Dade County, FL

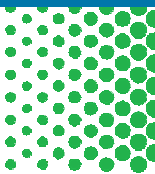
Upcoming PD&E Project

I-195/SR 112 from NW 12th Avenue to SR 907/Alton Road [ETDM #14453 / FM #440228-2]

- Lead Agency: FDOT OEM
- Previously Screened: September 2020 – January 2021
- East-West Strategic Intermodal System (SIS) Highway Corridor
- Intersects with I-95 & connects Miami Beach and areas east of I-95 to the Miami International Airport
- Proposed traffic operational, capacity, & multimodal improvements (including a separated shared use path between the City of Miami and the City of Miami Beach)



Current PD&E Project



Venetian Causeway Bridges from Bayshore Drive to Purdy Avenue [ETDM #12756 / FM #422713-2]

- Lead Agency: FDOT OEM / Cooperating Agencies: USACE & USCG
- Previously Screened: September 2011 – February 2012
- Address structural and functional deficiencies of the 12 existing bridges through potential alternatives such as replacement or rehabilitation
- Public hearing held May 11, 2021
- Updating PD&E documentation for submittal to FDOT OEM





District Seven ETDM Project Updates

Allison Conner
ETDM Coordinator

The screenshot displays the FDOT District 7 Studies website. At the top left is the FDOT logo, followed by the title "FDOT District 7 Studies" and the subtitle "Project Development and Environment Studies | Citrus, Hernando, Hillsborough, Pasco and Pinellas Counties". On the top right, it says "Florida Department of Transportation". Below the header is a navigation menu with links for "Home", "What is a PD&E Study?", "Upcoming Meetings", "Contact Information", and "Links". A blue instruction box reads: "Click/drag the map to locate a project and click the red marker to view project information. To locate a project by county, view the list below and click the project title to view the location and project information." The main content area features a map of the District 7 region with various project routes highlighted in orange, green, and yellow, and red markers indicating project locations. Major roads like I-75, US 98, and US 101 are visible. At the bottom, there are five buttons for filtering projects by county: "Citrus County", "Hernando County", "Pinellas County", "Pasco County", and "Hillsborough County".

US 98/ US 301 Corridor

Pasco and Hernando Counties

- Regional freight route
- Alternate route to I-75
- Addresses and enhances safety
- Increases capacity



US 301 from south of US 98 to SR 50/Cortez Blvd

Pasco and Hernando Counties
 WPIS #447536-1 ETDM #14465
 ETAT Review Complete January 2021

- PD&E Study Underway
- Widen from 2 to 4 lanes, multimodal facilities
- 4.0 miles
- Bridge crossing over Withlacoochee River
- Hybrid Public Hearing: June 24, 2021

US 98 Bypass

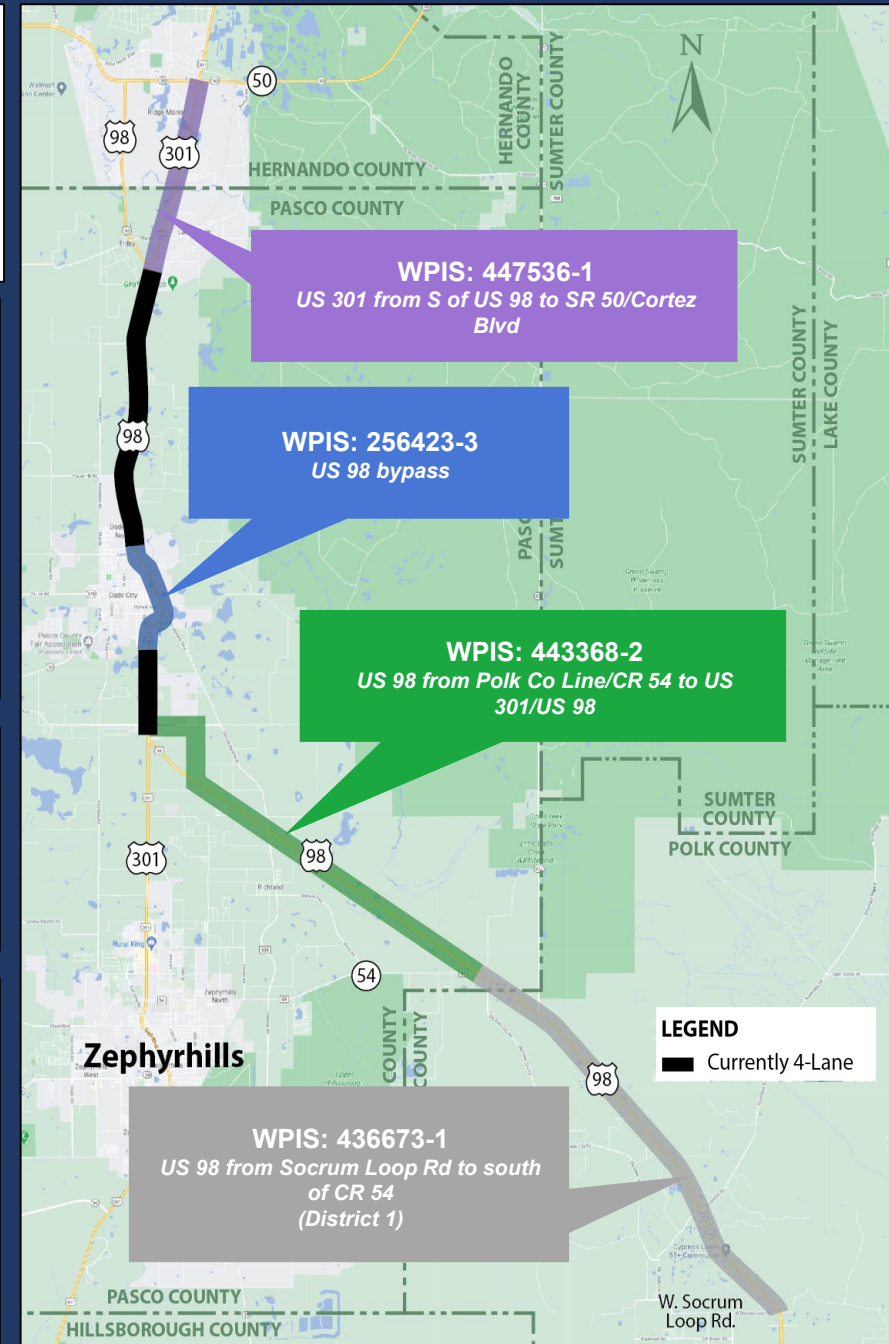
Pasco County
 WPIS #256423-3 ETDM #N/A

- PD&E approval in 2002. Design underway
- Widen 2 to 4-lanes, multimodal facilities
- 1.6 miles

US 98 from Polk County Line/CR 54 to US 301/US 98

Pasco County
 WPIS #443368-2 ETDM #14374
 ETAT Review Complete March 2021

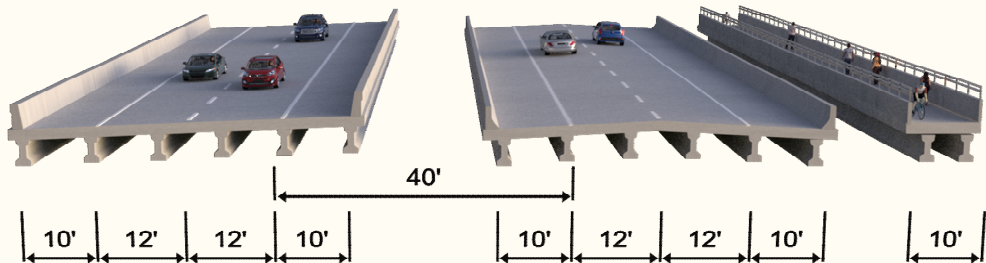
- PD&E study underway
- Widen 2 to 4-lanes with partial new alignment, multimodal facilities
- 8.2 miles
- Hybrid Public Hearing: End of 2021



US 301 over the Withlacoochee River

Proposed Bridge Typical Section

Proposed Bridge Existing (Bridge No. 080030) Proposed Pedestrian Bridge

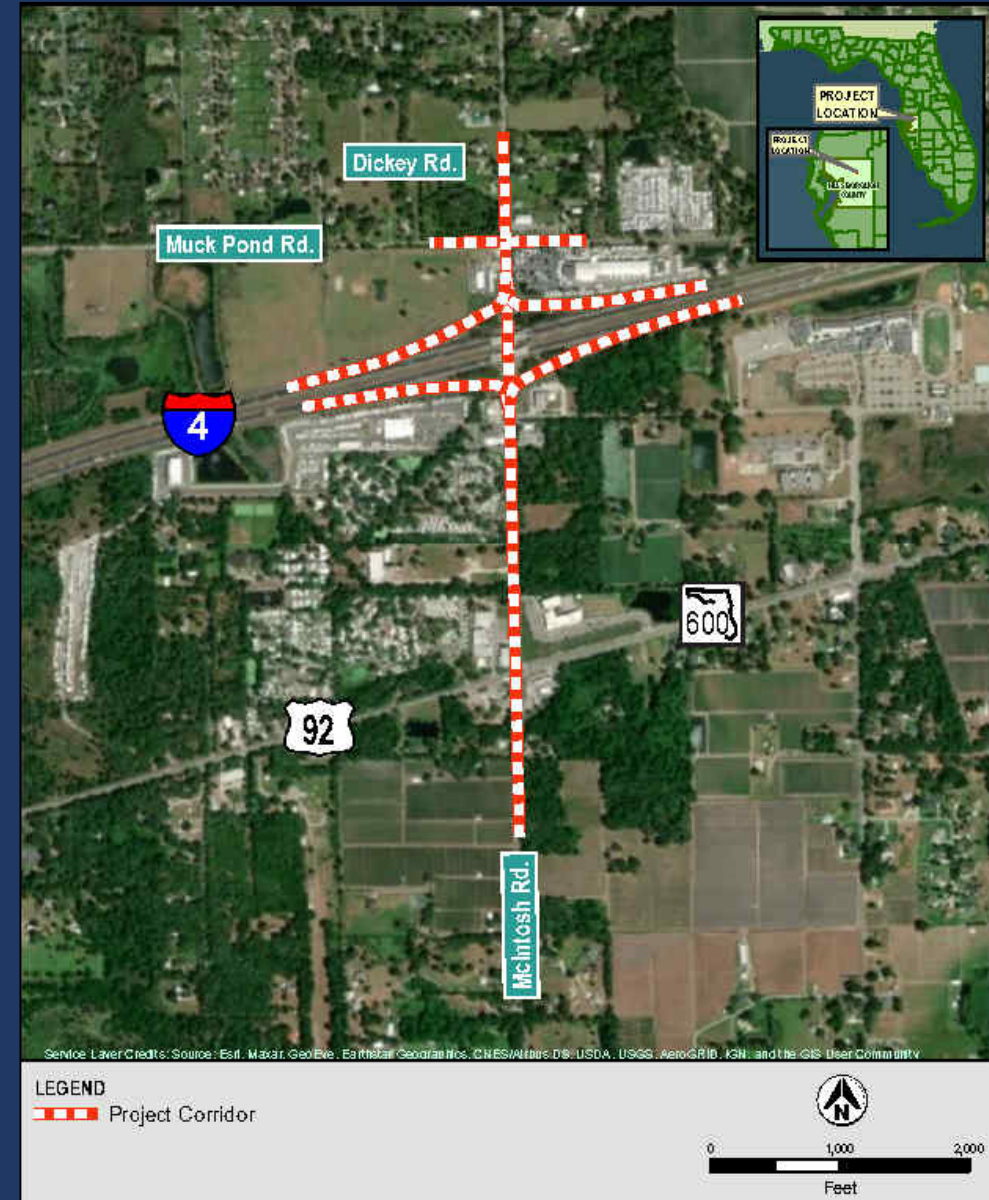


Current and Upcoming Projects

District 7

ETDM #14469 McIntosh Road from South of US 92 to North of I-4

- Hillsborough County
- Widen roadway from 2 to 4-lanes
- Operational improvements at I-4
- 1.03 miles
- ETAT Review Ends May 31, 2021



Current and Upcoming Projects

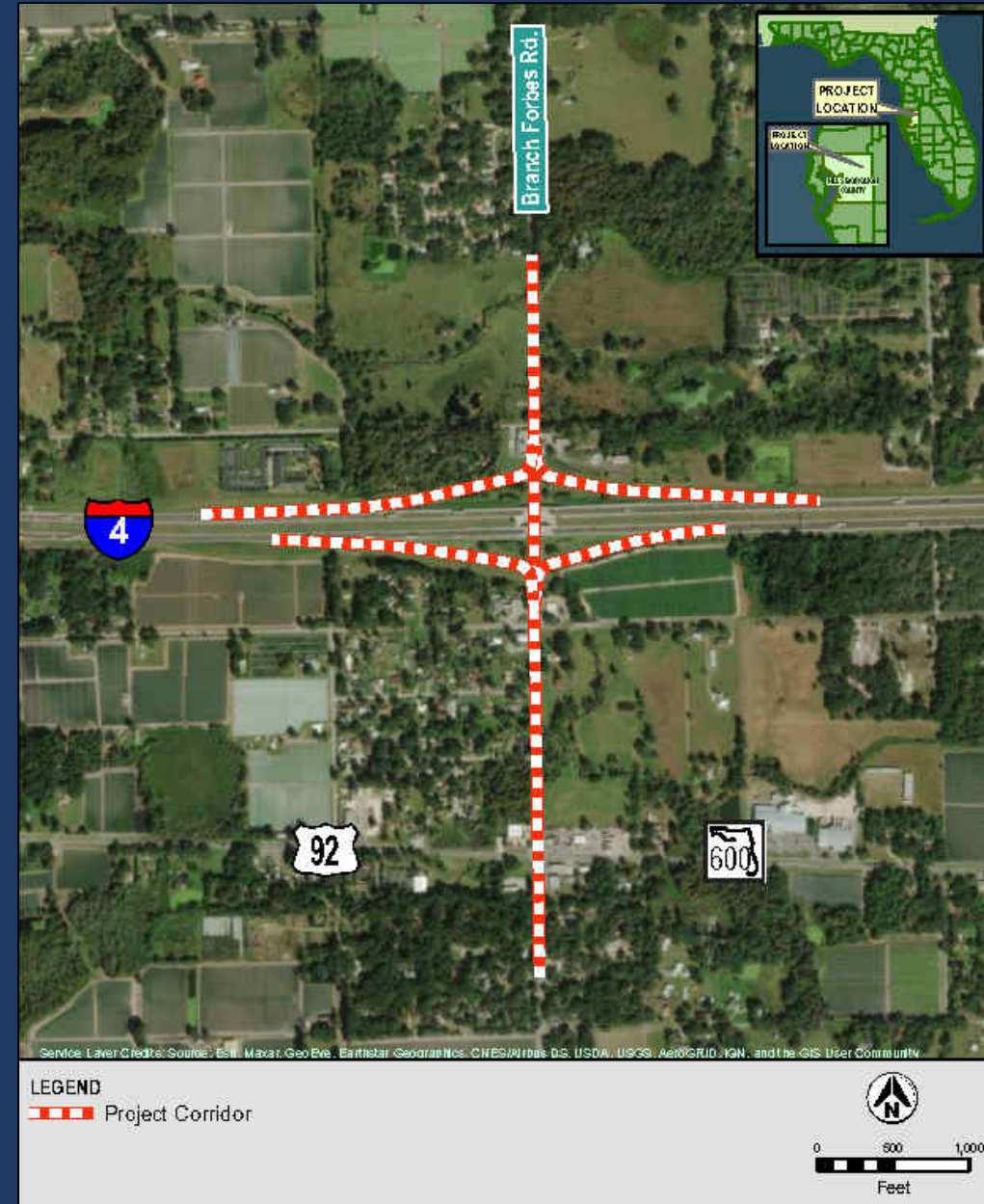
District 7

ETDM #14469 McIntosh Road from South of US 92 to North of I-4

- Hillsborough County
- Widen roadway from 2 to 4-lanes
- Operational improvements at I-4
- 1.03 miles
- ETAT Review Ends May 31, 2021

ETDM #14470 Branch Forbes Road from South of US 92 to North of I-4

- Hillsborough County
- Widen roadway from 2 to 4-lanes
- Operational improvements at I-4
- 0.89 mile
- ETAT Review Ends June 18, 2021



Current and Upcoming Projects

District 7

ETDM #14469 McIntosh Road from South of US 92 to North of I-4

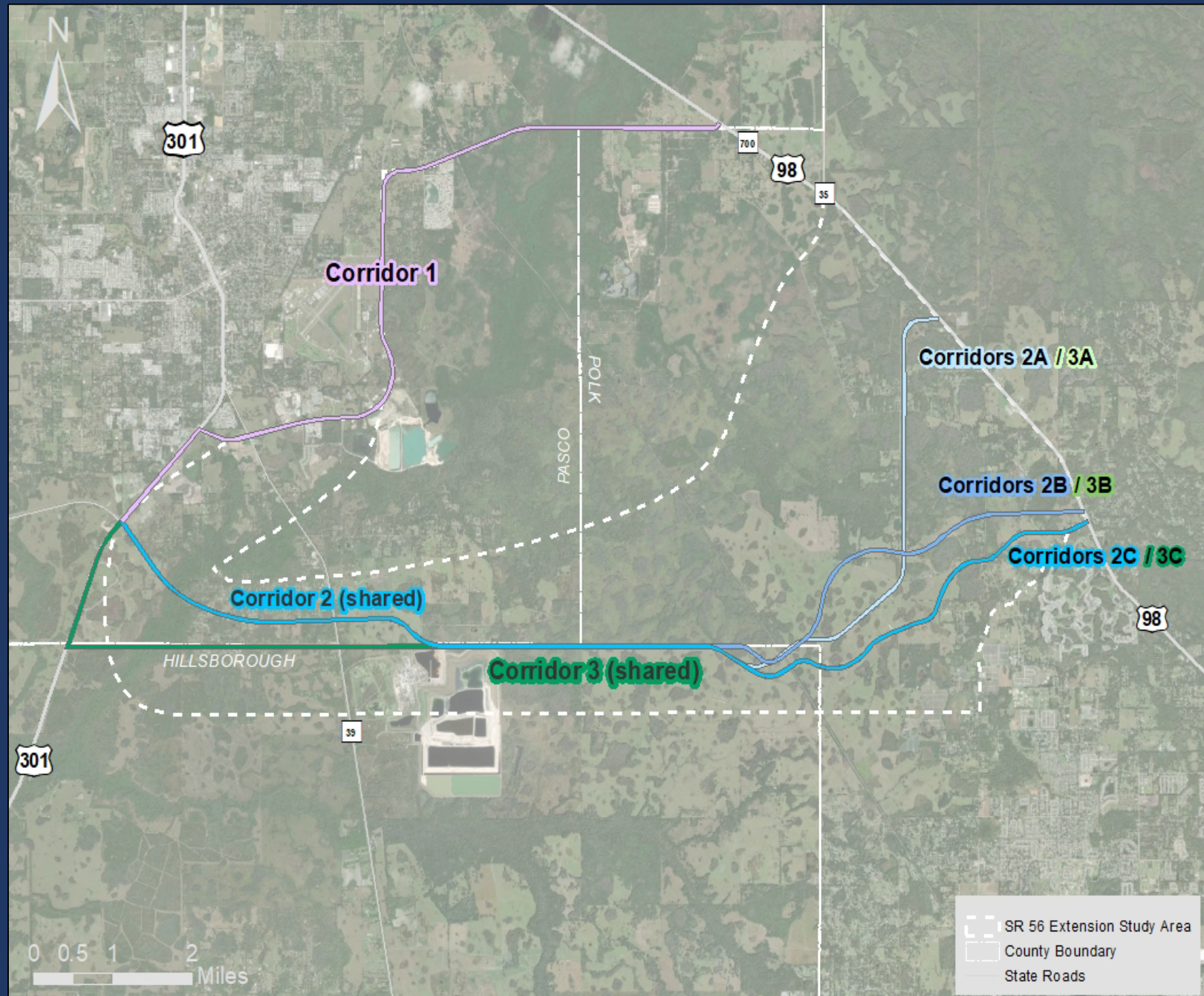
- Hillsborough County
- Widen roadway from 2 to 4-lanes
- Operational improvements at I-4
- 1.03 miles
- ETAT Review Ends May 31, 2021

ETDM #14470 Branch Forbes Road from South of US 92 to North of I-4

- Hillsborough County
- Widen roadway from 2 to 4-lanes
- Operational improvements at I-4
- 0.89 mile
- ETAT Review Ends June 18, 2021

ETDM #14390 SR 56 Extension from US 301/SR 41 to US 98/SR 35/SR 700

- Pasco County
- New alignment
- ACER review in June 2021
- Public Meeting June 15th, 2021
- Programming Screen in Summer 2021



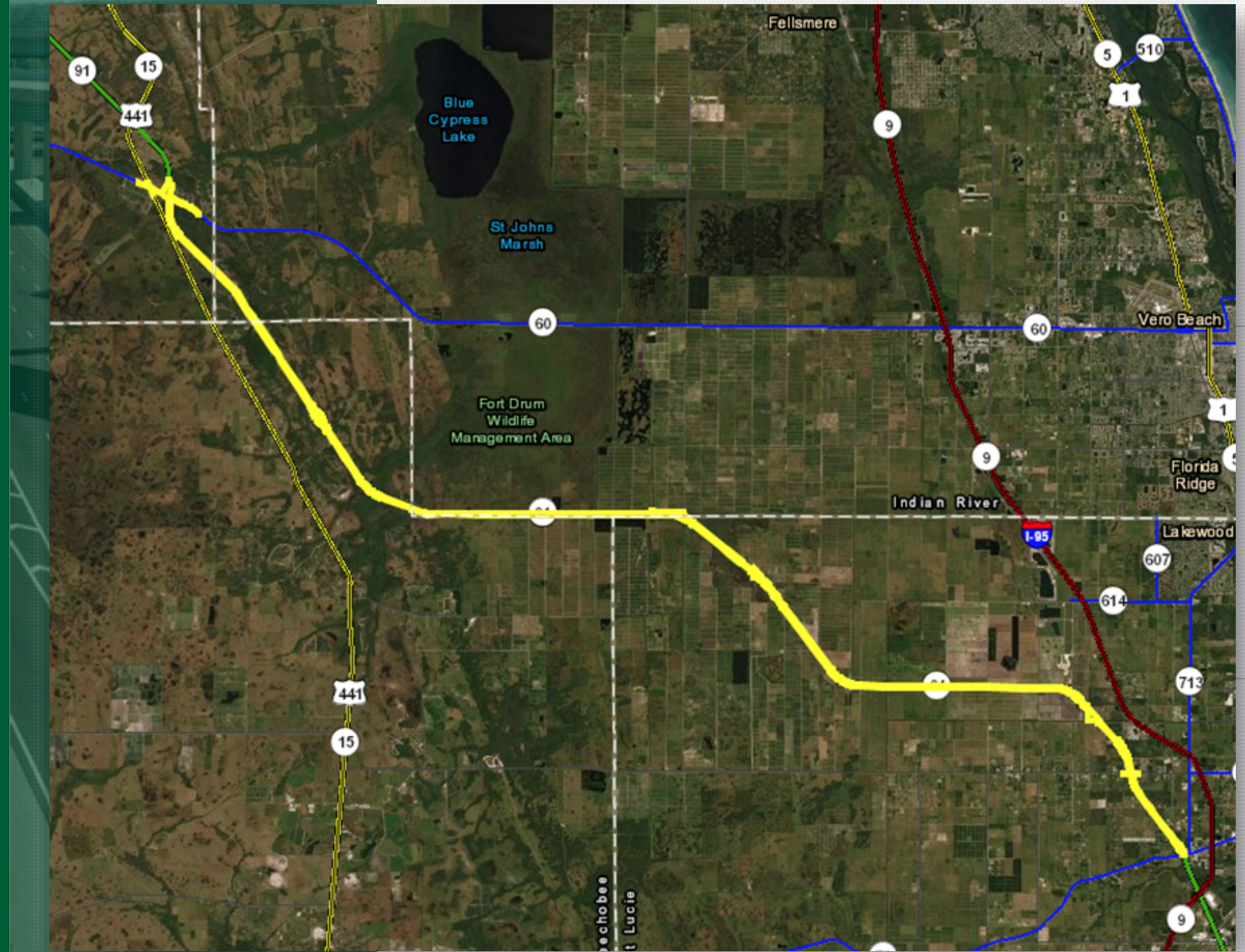
Florida's Turnpike Enterprise ETDM Project Updates

Rax Jung, Project Development Engineer
Environmental Management Office



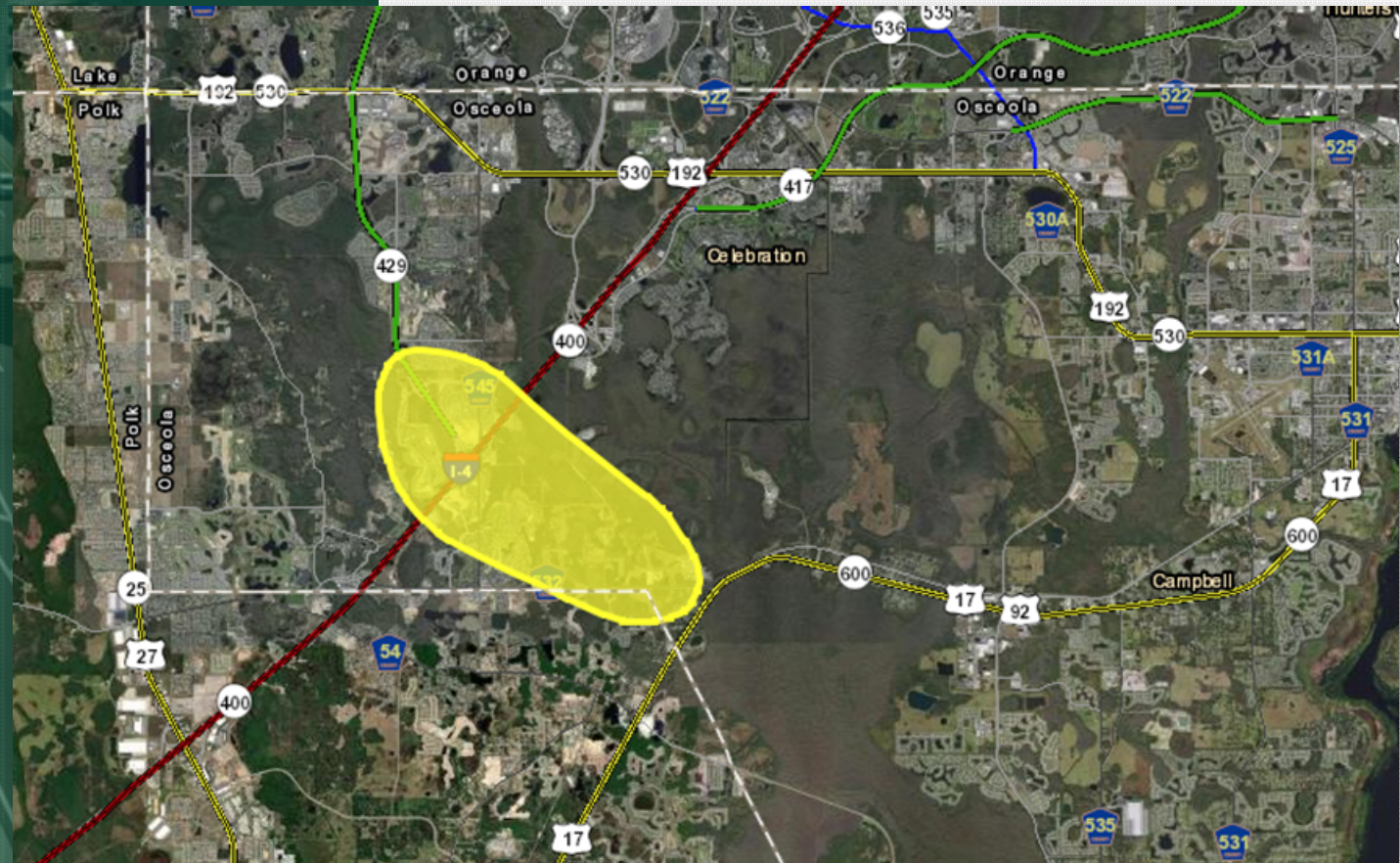
ETDM 14425 Turnpike Widening from SR 70 to SR 60

- St Lucie, Indian River, Okeechobee, and Osceola Counties
- Capacity improvement project to widen the Turnpike (SR 91) mainline segment of 41 miles from 4 to 6 lanes, evaluate potential new interchanges, and improve existing interchanges.
- ETDM summary report published in August 2020
- NTP for PD&E study (SEIR) executed in May 2021.



ETDM 14445 Poinciana Parkway Extension from CR 532 to I-4/SR 429 Interchange

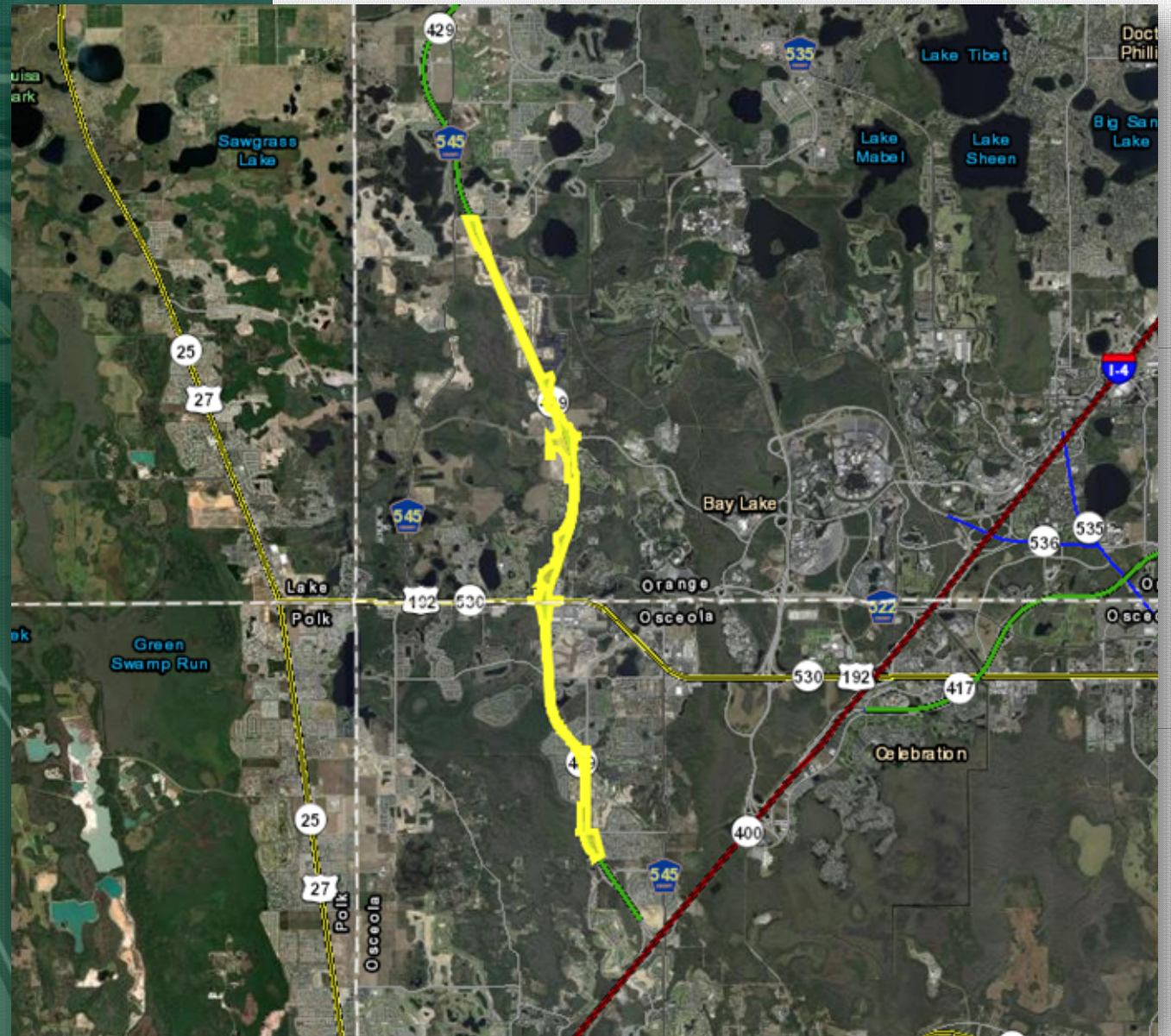
- Polk and Osceola Counties
- New 6-lane alignment of 3 miles to complete the missing link by connecting three limited access facilities – I-4, SR 429, and CFX's Poinciana Parkway (currently under Design-Build contract).
- The ETDM summary report published in September 2020 and republished in January 2021 (to accommodate additional ETAT's comments)
- NTP for PD&E study (Type II CE or EA) executed in January 2021



ETDM 14446

SR 429 Widening from I-4 to Seidel Rd

- Orange and Osceola Counties
- Capacity improvement project to widen the SR 429 mainline segment of 9 miles from 4 to 8 lanes, evaluate potential new interchanges, and improve existing interchanges
- ETDM summary report published in September 2020 and republished in January 2021 (to address some ETAT's P&N concerns)
- NTP for PD&E study (SEIR) was executed in January 2021



ETDM 14444 Turnpike and I-95 Direct Connection Interchange

- Martin County
- New system-to-system interchange to improve traffic operations on two limited access facilities – I-95 and Turnpike (SR 91), and existing cross streets providing connection between these two facilities.
- ETDM summary report published in January 2021
- NTP for PD&E study (Type II CE) expected in September 2021

