

**ETDM** **EST**

# Statewide ETAT Meeting

May 26, 2021  
Tallahassee, FL



# Welcome Back!

Peter McGilvray, Administrator  
Environmental Quality and Performance  
Office of Environmental Management

# Agenda



<b>2:00</b>	Welcome Back & Re-cap
<b>2:15</b>	Introductions
<b>2:45</b>	Project Updates
<b>3:15</b>	<i>Break</i>
<b>3:30</b>	EST Demonstrations <ul style="list-style-type: none"><li>• ETAT Review tools</li><li>• New Document Review Module</li><li>• GIS Data Additions</li></ul>
<b>4:00</b>	Breakout Groups – Feedback about the new EST <ul style="list-style-type: none"><li>• What do you like?</li><li>• What could be better?</li></ul>
<b>4:30</b>	Breakout Groups Report Back
<b>4:50</b>	Meeting Wrap Up
<b>5:00</b>	Adjourn

A woman with long dark hair, wearing a white ribbed sweater, is shown in profile from the chest up. She is sitting at a desk and looking towards a large computer monitor. The monitor displays a video conference with several participants in a grid layout. A webcam is mounted on top of the monitor. The background behind her is a brick wall. The overall scene is brightly lit, suggesting a window nearby.

# Introductions

---

Round Robin by Agency



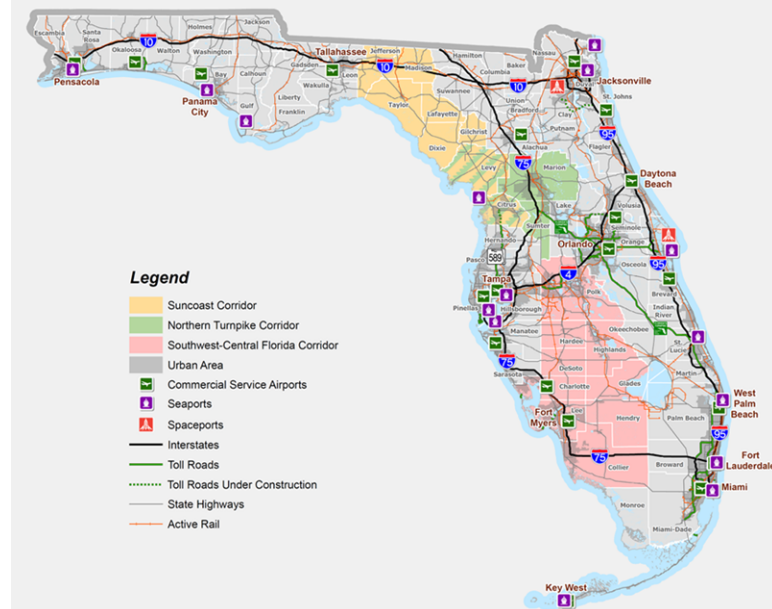
## Agenda

- M-Cores/Senate Bill 100 Update
- Stimulus Bill
- Vital Few Mobility
- Florida Transportation Plan
- SIS Policy

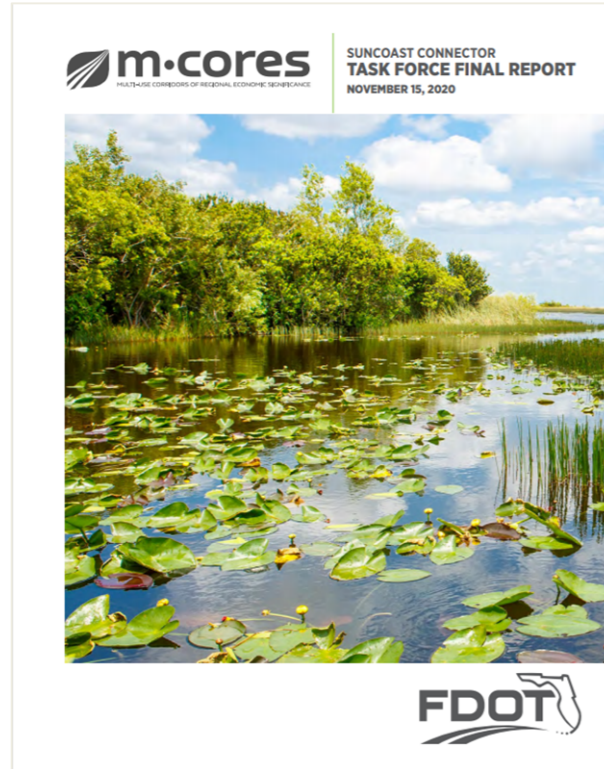


# SB 100 Overview

- Repeals M-CORES Program
- Directs FDOT to go forward with:
  - Suncoast Corridor alignment along U.S. 19
  - Northern Turnpike Corridor into PD&E
- Creates new provisions for:
  - Upgrading arterial highways to controlled access facilities
  - Funding \$20M in widening 2-lane rural arterials to 4-lanes



# M-CORES Task Force Reports



# Project Development Process

**PRE-PLANNING**

**PLANNING &  
CORRIDOR  
EVALUATION**

**PROJECT  
DEVELOPMENT  
&  
ENVIRONMENT  
AND DESIGN**

**RIGHT-OF-WAY  
ACQUISITION**

**CONSTRUCTION**

Public & Stakeholder Engagement





# Stimulus Funding Update

---

- Preliminary Update

# Enhance Mobility



Moving Vehicles



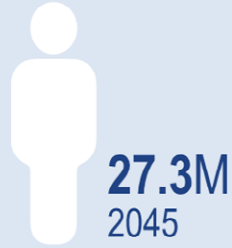
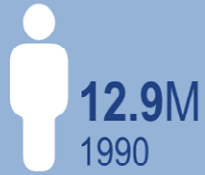
Moving People & Goods

**TEAM CHARGE:**

**MOVE THE MOBILITY NEEDLE**

# Growing Travel Demand

## People

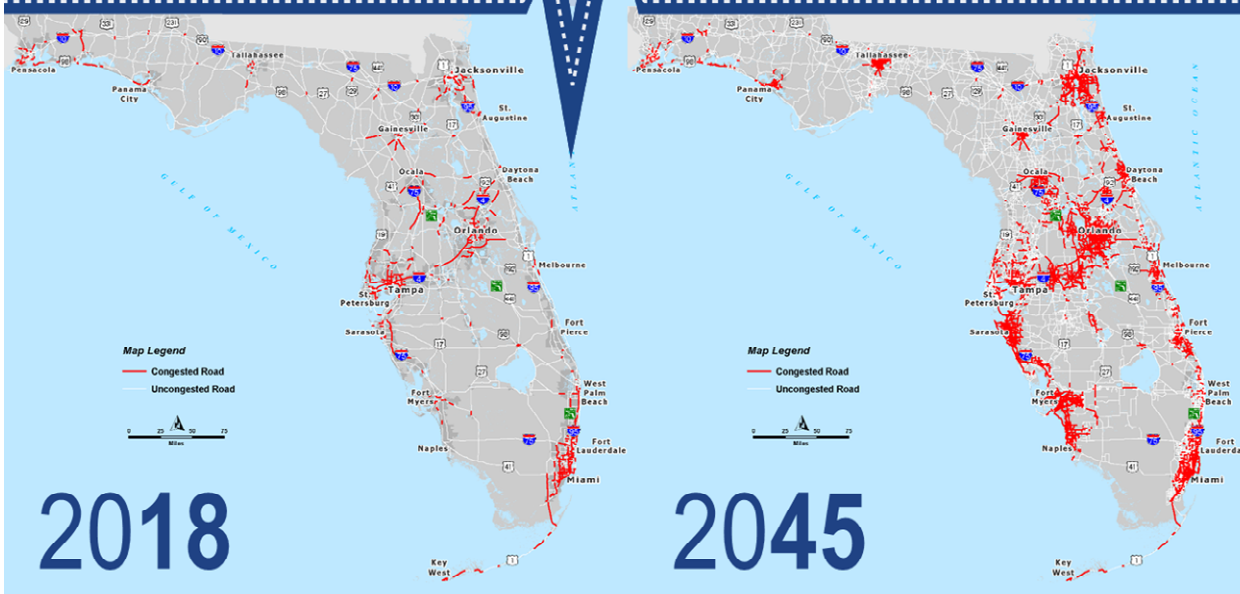


Source: Bureau of Economic and Business Research (BEBR)

## Goods



Source: Freight Analysis Framework 4.5.1.



**\$1 TRILLION**  
GROSS DOMESTIC PRODUCT



**131 MILLION**  
ANNUAL VISITORS

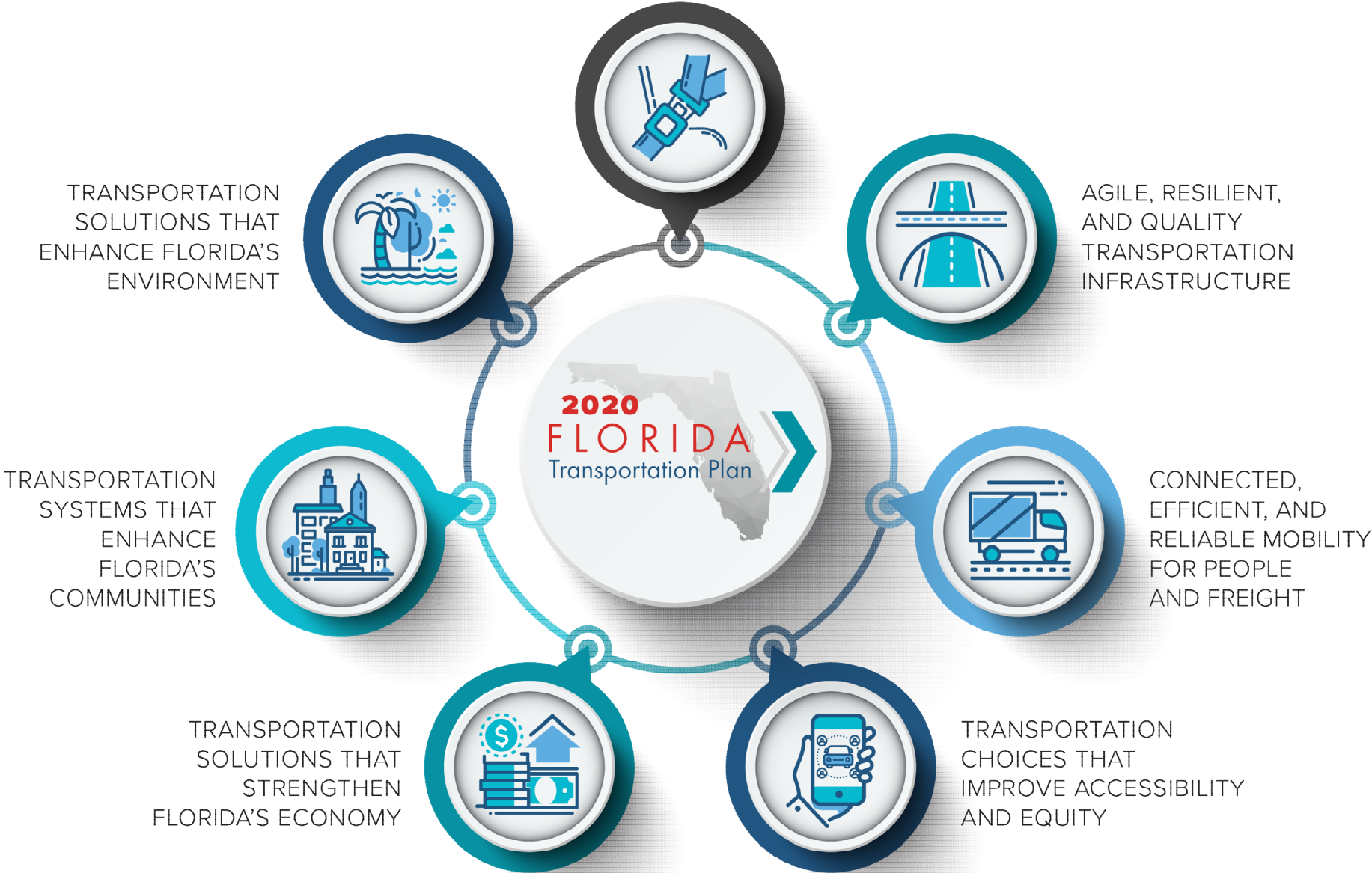


**8.5 MILLION**  
JOBS, 3<sup>rd</sup> LARGEST WORKFORCE IN US



**4<sup>th</sup> LARGEST**  
US ECONOMY & 17<sup>th</sup> IN THE WORLD

SAFETY AND SECURITY FOR  
RESIDENTS, VISITORS, AND BUSINESSES



TRANSPORTATION  
SOLUTIONS THAT  
ENHANCE FLORIDA'S  
ENVIRONMENT

AGILE, RESILIENT,  
AND QUALITY  
TRANSPORTATION  
INFRASTRUCTURE

TRANSPORTATION  
SYSTEMS THAT  
ENHANCE  
FLORIDA'S  
COMMUNITIES

CONNECTED,  
EFFICIENT, AND  
RELIABLE MOBILITY  
FOR PEOPLE  
AND FREIGHT

TRANSPORTATION  
SOLUTIONS THAT  
STRENGTHEN  
FLORIDA'S ECONOMY

TRANSPORTATION  
CHOICES THAT  
IMPROVE ACCESSIBILITY  
AND EQUITY

# SIS Policy Plan Update Underway

Interregional  
Connectivity



Intermodal  
Connectivity



Economic  
Development



# Questions?