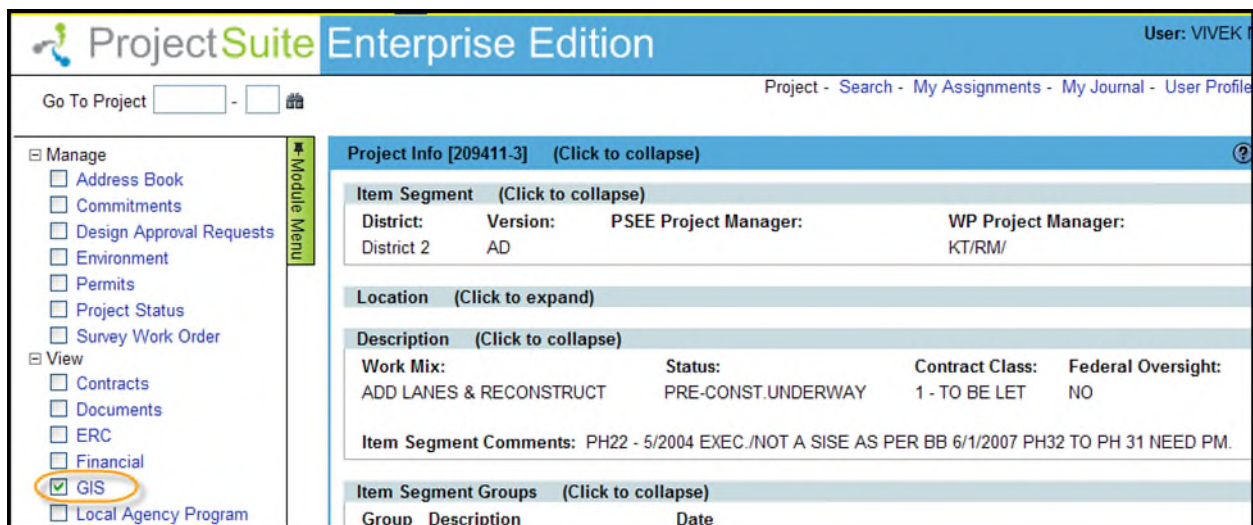


## The GIS Module

The GIS module provides geographical information about the selected Project on an embedded interactive map. This module leverages the FDOT Enterprise GIS Framework to display the interactive map and its features.

### To View the GIS Module

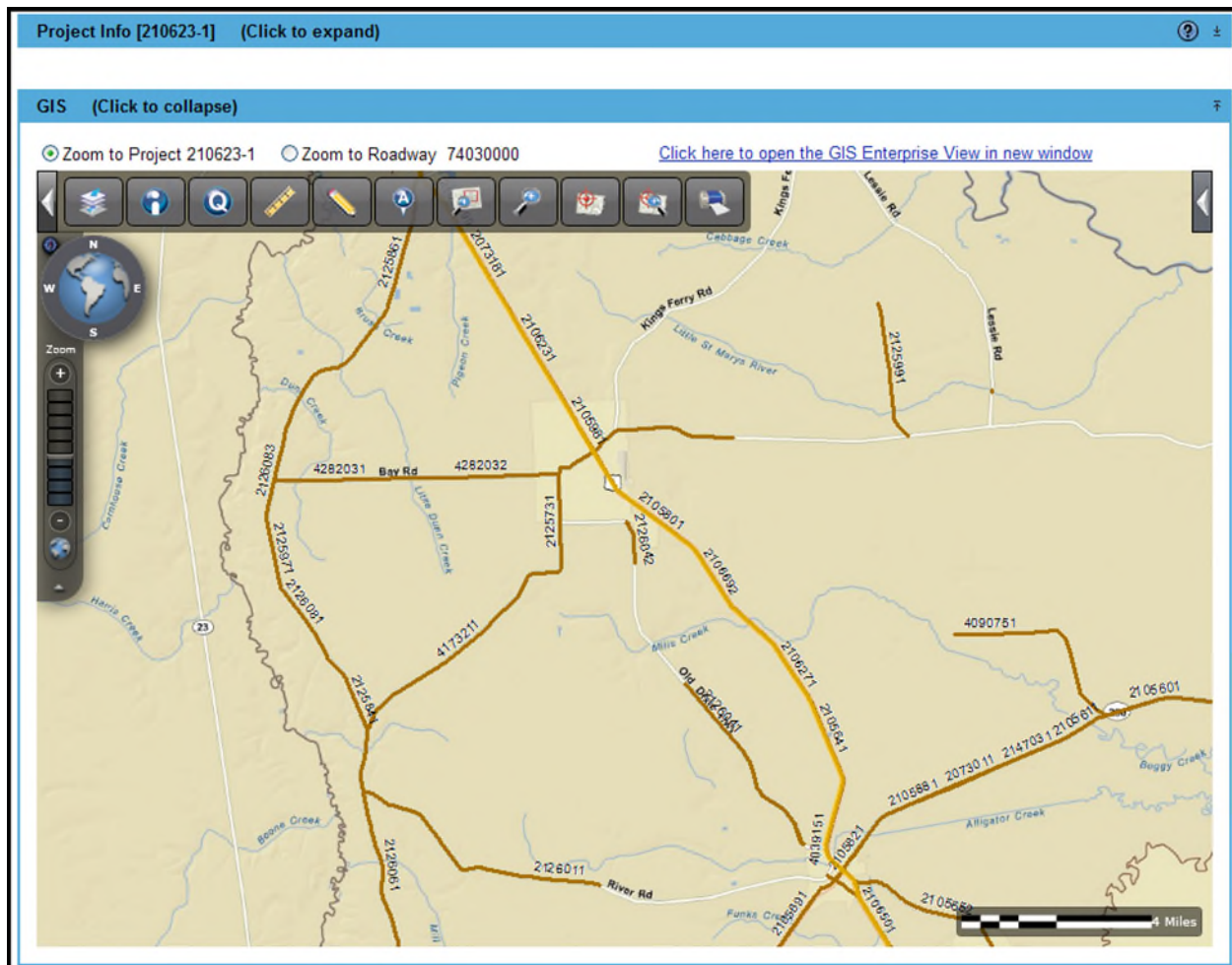
1. Select the **GIS Module** from the Module Menu.



The screenshot displays the ProjectSuite Enterprise Edition web application interface. The top navigation bar includes the ProjectSuite logo, the text "Enterprise Edition", and the user name "User: VIVEK". Below the navigation bar, there is a "Go To Project" search field and a "Project - Search - My Assignments - My Journal - User Profile" menu. The main content area is divided into a left-hand "Module Menu" and a right-hand "Project Info" section. The "Module Menu" is expanded, showing a list of modules under "Manage" and "View" categories. The "GIS" module is selected and highlighted with a red circle. The "Project Info" section displays details for project [209411-3], including "Item Segment" (District: District 2, Version: AD, PSEE Project Manager: KT/RM/), "Location", "Description" (Work Mix: ADD LANES & RECONSTRUCT, Status: PRE-CONST.UNDERWAY, Contract Class: 1 - TO BE LET, Federal Oversight: NO), and "Item Segment Comments".

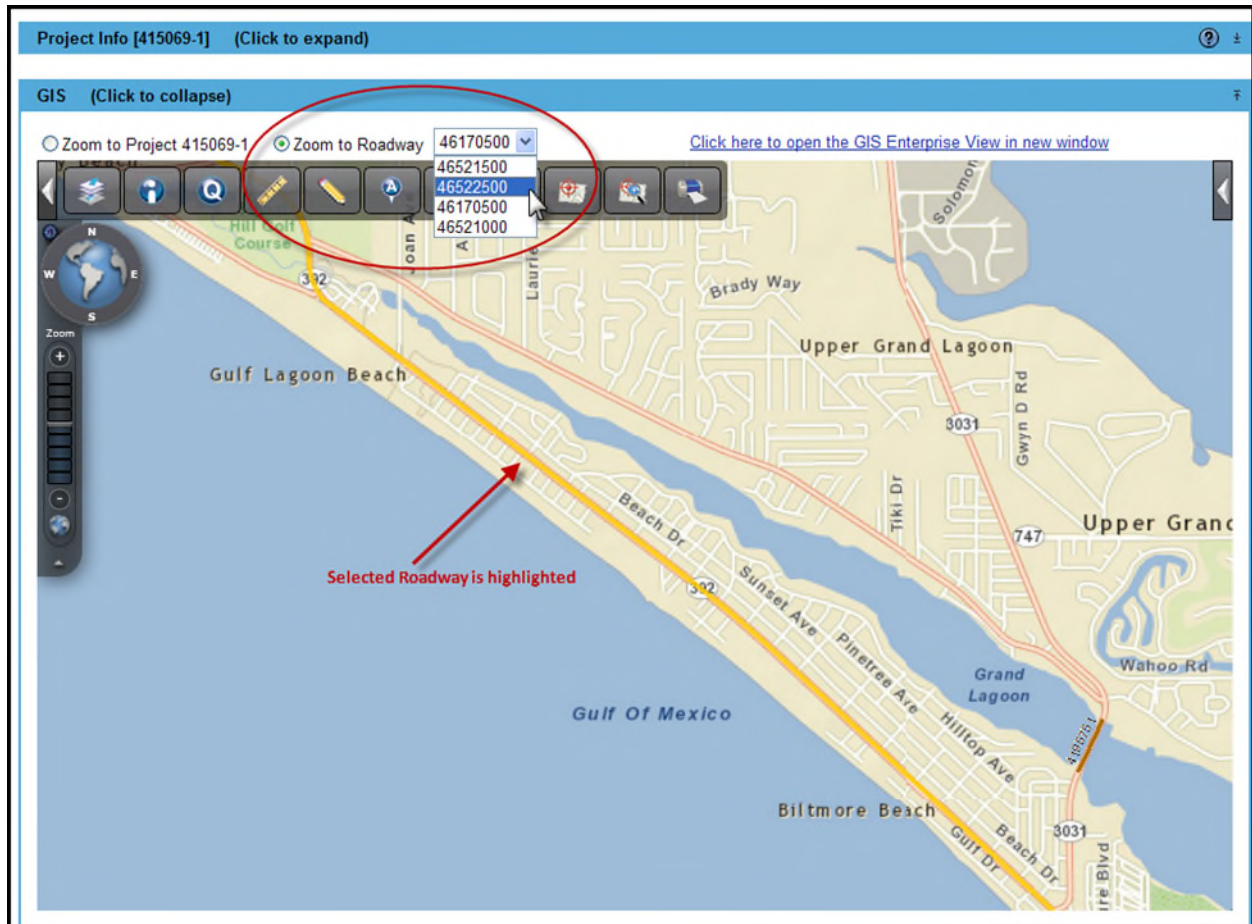
Group	Description	Date

- The map will be displayed. By default, the GIS module will Zoom to the selected Project. This displays the Project area, highlighted in yellow, using the base street map. In addition, the Work Program – Item Segments layer is activated so users will also see other Projects within the immediate area. **NOTE: While PSEE defaults the users view to the Project currently being viewed in PSEE, users can use the tools to navigate to any geographic areas within the State of Florida.**

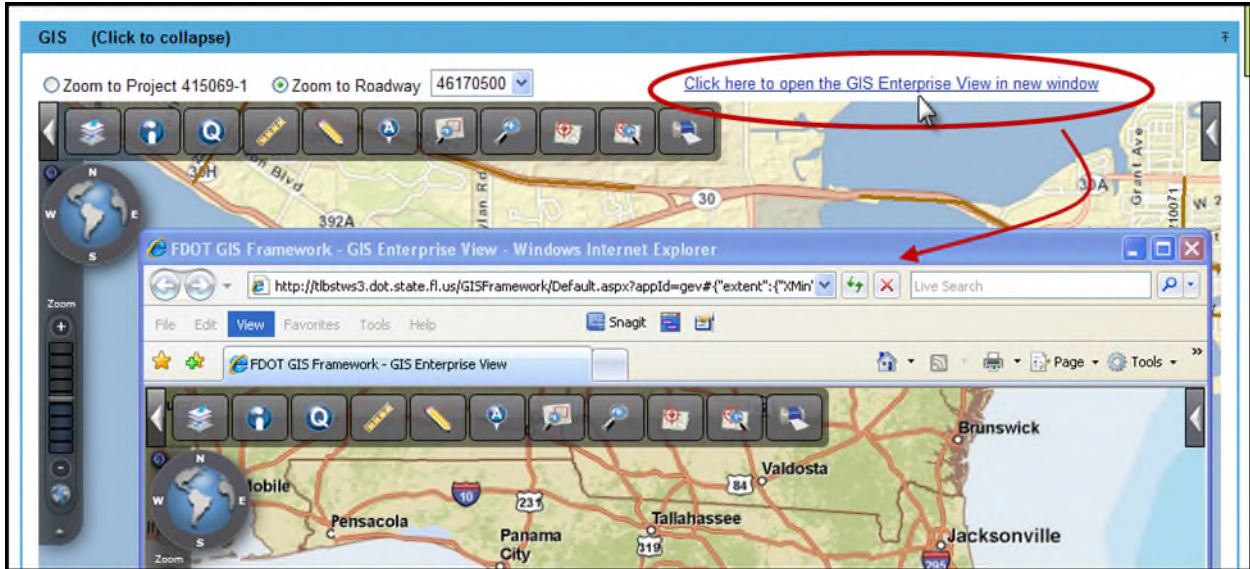


- Users also have the option to view the affected Roadway(s) by selecting the **Zoom to Roadway** radio button. If the selected Project is on multiple Roadways, the Zoom to

Roadway option will have a dropdown with all Roadways shown. Select the needed Roadway and the map will highlight and zoom to the selected Roadway.



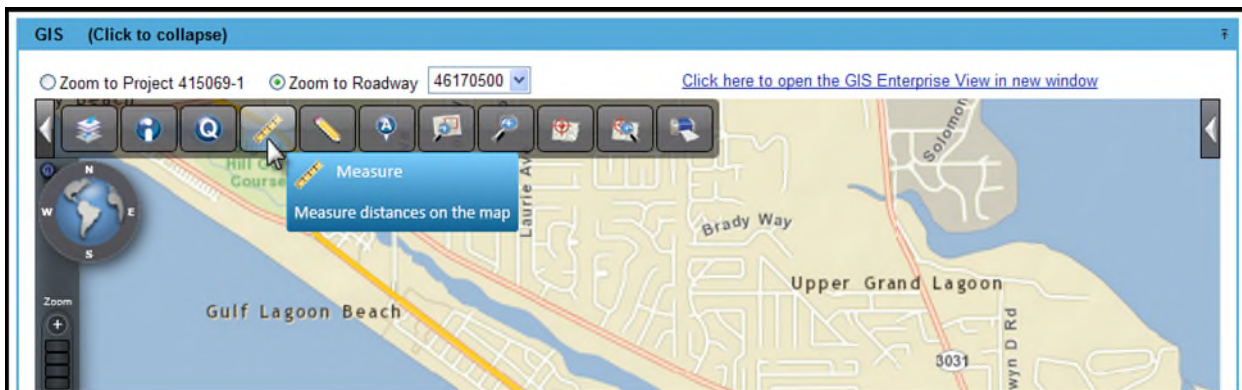
4. On the top-right a link has been provided to open the FDOT GIS Enterprise View application in a new browser window. The new window will not be associated with a specific Project or Roadway.



### GIS Module Features

The embedded map provides all of the features provided by the FDOT Enterprise GIS Framework. This includes the ability to selecting & query layer(s), Zoom to Districts or Counties, and Zoom to Coordinates.

1. Hover over any of the options on the screen for a quick description.





2. Once an option has been selected, more details and help are available by selecting the help link (question mark) that appears in the upper right corner of the screen.

