



Design Quality Forum



August 27, 2025



Tyler Burgett
Consultant Project
Management

Welcome & Agenda

- Leadership Remarks – Mike Heffinger, P.E.,
- CPM Update – Catalina Chacon, P.E.
- Bid Questions & Revisions – Ed Kestory, P.E.,
- Signing & Sealing 3D Design – Naziru Isaac, P.E.
- ACEC Update – Mark Hales, P.E.
- E & Os with Pay Item Quantities – John Hatfield, P.E.
- **BREAK**
- BABA Requirements – Missy Hollis
- ISD Updates – Kellie Smith
- Interchanges – Steven Buck, P.E.
- Program Management Update – Kathy Alexander-Corbin
- Environmental Updates – Nicole Belian
- Survey & Mapping Update – Marika Tremblay
- ITS Design Resources – Tushar Patel
- Geotech Update – Tom Kunzen, P.E.



Mike Heffinger, P.E.
Director of Transportation
Operations

Leadership Remarks





Catalina Chacon, P.E.
DCPME

CPM Updates

- New CPM Staff Members
- Organizational Moves
- DCPME Review
- Pavement Designs
- FY 2026 Lockdown



Shaune Clark



Tyler Paura

FY 2026 Lockdown – Consultant Plan

< Target			TARGET	> Target			DISTRICT 05 CONSULTANT PLAN (FY26)																								
Updated 8/8/2025							FORECAST													FORECAST											
PERFORMANCE REPORT SUMMARY							YTD	TOTAL	JUL	AUG	SEP	OCT	NOV	DEC	JAN	FEB	MAR	APR	MAY	JUN	Comments	Balance	WorkMix	PM	Month	CC	Cnty	CstC			
Consultant Acquisition Dollar	PLAN						\$	168.42	168.42	15.85	35.12	10.11	11.71	23.28	9.09	13.23	9.29	6.26	8.98	11.29	14.21	Forecast uses programmed amounts from work program (red below).									
	PERFORMANCE (MONTH)								15.85	35.12	10.11	11.71	23.28	9.09	13.23	9.29	6.26	8.98	11.29	14.21											
	PERFORMANCE (YTD)						\$	168.42		15.85	50.97	61.08	72.79	96.07	105.16	118.39	127.69	133.95	142.93	154.22	168.42	Yellow and blue highlighted projects are only for internal system follow-up and highlighting will be removed once reporting system checks are complete. You may safely ignore these markings. Thank you.									
	RESULT (TARGET 95% - 105%)						%	100.0%		100.0%	100.0%	100.0%	100.0%	100.0%	100.0%	100.0%	100.0%	100.0%	100.0%	100.0%	100.0%	100.0%									
Consultant Acquisition Number	PLAN						#	167	167	25	39	15	12	18	5	11	8	7	12	9	6	Grey shaded rows might be removed from lockdown pedding CO confirmation.									
	PERFORMANCE (MONTH)						#			25	39	15	12	18	5	11	8	7	12	9	6										
	PERFORMANCE (YTD)						#	167		25	64	79	91	109	114	125	133	140	152	161	167										
	RESULT (TARGET 95% - 105%)						%	100.0%		100.0%	100.0%	100.0%	100.0%	100.0%	100.0%	100.0%	100.0%	100.0%	100.0%	100.0%	100.0%	100.0%									
ADDED PROJECTS - NEW & ADVANCED							\$		0.00	0.00	0.00	0.00	0.00	0.00	0.00	0.00	0.00	0.00	0.00	0.00	0.00										
							#		65	2	2	11	8	5	6	4	12	6	2	7		next viewed at 75% zoom.									
DISTRICT 05 LOCKDOWN CONSULTANT PLAN FOR 2025 / 2026																															
#	DST	FIN PRI	PROJECT DESCRIPTION	PH	> SSM	EST \$	ST	JUL	AUG	SEP	OCT	NOV	DEC	JAN	FEB	MAR	APR	MAY	JUN	Comments	Fund / Balance	WorkMix	PM	Month	CC	Cnty	CstC				
01	5	237099-1	DISTRICTWIDE MISC DRAINAGE STUDIES/DESIGN	32		0.10		0.10														PRELIMINARY ENGINEERIN	KSH	Jul	4	DIST/ST-WIDE	553				
02	5	237974-1	DISTRICTWIDE TRAFFIC ENGINEERING CONTINUING SERV	32		3.27		3.27														PRELIMINARY ENGINEERIN	ZSZ	Jul	4	DIST/ST-WIDE	562				
03	5	237975-1	DISTRICTWIDE DRAINAGE PROJECTS DESIGN CONSULTAN	32		0.50		0.50														DRAINAGE IMPROVEMENT	EYS	Jul	4	DIST/ST-WIDE	510				
04	5	237984-2	DISTRICTWIDE CONSULTANT CEI SUPPORT AREAWIDE	62		3.98		1.04			1.00			0.80			0.67		0.47	Split - Jul 1.04, Oct 1.00, Jan 0.80, Apr 0.67, Jun		INSPECT CONSTRUCTION P	AJS	Jul	4	DIST/ST-WIDE	506				
05	5	241068-1	DISTRICTWIDE ENGR CONSULTANT APPRAISAL & LEGAL	42		4.08		0.38				1.23			1.23			1.23		Split - Jul 0.38, Nov 1.23, Feb 1.23, May 1.23		RIGHT OF WAY ACTIVITIES	JMB	Jul	4	DIST/ST-WIDE	551				
06	5	241084-2	DISTRICTWIDE MATERIALS CONSULTANT CONTRACT TESTI	32		0.50		0.25										0.25		Split - Jul 0.25, May 0.25		TECHNICAL ASSISTANCE	TMD	Jul	4	DIST/ST-WIDE	519				
07	5	241085-1	UTILITIES CONTINUING SERVICES CONTRACT	32		1.48		1.48						0.00						Split - Jul 1.48, Feb 0.001		PRELIMINARY ENGINEERIN	SLN	Jul	4	DIST/ST-WIDE	546				
08	5	241124-2	DISTRICTWIDE STRUCTURES MAINTENANCE DESIGN/MIN	32		0.16		0.05							0.11					Split - Jul 0.05, Mar 0.11		PRELIMINARY ENGINEERIN	JJJ	Jul	4	DIST/ST-WIDE	538				
09	5	416620-1	DISTRICTWIDE VALUE ENGINEERING CONSULTANT	32		0.10		0.10														PRELIMINARY ENGINEERIN	TAB	Jul	4	DIST/ST-WIDE	542				
10	5	417074-1	DISTRICTWIDE QUALITY ASSURANCE PLANS REVIEW	32		0.75		0.51					0.24							Split - Jul 0.51, Dec 0.24		PRELIMINARY ENGINEERIN	ALS	Jul	4	DIST/ST-WIDE	542				
11	5	437512-1	MODAL DEVELOPMENT TECH SUPPORT & PUBLIC OUTREA	12		0.30		0.15										0.15		Split - Jul 0.15, May 0.15		CORRIDOR/SUBAREA PLAN	JAS	Jul	4	DIST/ST-WIDE	530				
12	5	441015-1	SR 434 FROM RANGELINE ROAD TO US 17-92	62		0.40		0.40														PAVEMENT ONLY RESURFA	DDD	Jul	7	SEMINOLE	506				
13	5	441113-2	I-4 (SR 400) AT DARYL CARTER PARKWAY INTERCHANGE LA	62		0.17		0.17														LANDSCAPING	ALS	Jul	7	ORANGE	506				
14	5	441141-1	SR 464 FROM SR 500 (US 27/301) TO SR 35	62		0.11		0.11														RESURFACING	EPV	Jul	1	MARION	506				
15	5	443838-1	SR 434 FROM RANGELINE RD TO 525' WEST OF SR 15/600	62		0.46		0.46														TRAFFIC OPS IMPROVEMEN	DDD	Jul	1	SEMINOLE	506				
16	5	445696-2	SR 438 AT LE HAVRE BLVD/COAST LINE DR AND DARDANE	62		0.61		0.61														SAFETY PROJECT	DDD	Jul	1	ORANGE	506				
17	5	448773-1	SR 483 (CLYDE MORRIS) FROM SR 400 (BEVILLE RD) TO N	32		1.50		0.58							0.92					Split - Jul 0.58, Split Feb 0.92		PEDESTRIAN SAFETY IMPRO	JTG	Jul	7	VOLUSIA	542				
18	5	448859-1	DISTRICTWIDE TRAFFIC OPERATIONS PROJECT MANAGEM	32		1.37		0.50					0.87							Split - Jul 0.50, Dec 0.87		TRAFFIC ENGINEERING STU	DDS	Jul	4	DIST/ST-WIDE	562				
19	5	450214-1	CSC FOR SAFETY TECHNICAL SUPPORT AND PUBLIC OUTRE	12		1.61		0.80			0.81									Split - 0.80, Oct 0.81		CORRIDOR/SUBAREA PLAN	SHP	Jul	4	DIST/ST-WIDE	547				
20	5	450270-1	CSC FOR SAFETY TECHNICAL SUPPORT & PUBLIC OUTREAC	12		1.25		0.60						0.65						Split - Jul 0.60, Jan 0.65		TRANSPORTATION STATIST	SHP	Jul	4	DIST/ST-WIDE	547				
21	5	450577-1	SR 527 / ORANGE AVE FROM MAGNOLIA AVE TO SR 50	62		0.21		0.21														PAVEMENT ONLY RESURFA	SMJ	Jul	7	ORANGE	506				
22	5	450583-1	SR 436 FROM LAKE HOWELL ROAD TO ORANGE COUNTY L	62		0.68		0.68														PAVEMENT ONLY RESURFA	BXH	Jul	7	SEMINOLE	506				
23	5	450771-1	I-95/SR 9 FROM SOUTH OF SR 50 TO SR 46	62		2.22		2.22														RESURFACING	EPV	Jul	1	BREVARD	506				
24	5	451343-1	CONTRACTUAL SERVICES CONTRACT FOR SAFETY PUBLIC C	12		1.00		0.50						0.50						Split - Jul 0.50, Jan 0.50		CORRIDOR/SUBAREA PLAN	SHP	Jul	4	DIST/ST-WIDE	547				
25	5	453709-1	STRUCTURES MAINTENANCE MISCELLANEOUS BRIDGE DE	62		0.18		0.18														BRIDGE-REPAIR/REHABILIT	TSR	Jul	7	DIST/ST-WIDE	506				
26	5	237984-3	CONSULTANT CEI SUPPORT PUBLIC MEETING INFORMATIO	62		0.86			0.86													INSPECT CONSTRUCTION P	TJC	Aug	4	DIST/ST-WIDE	506				
27	5	241135-1	DISTRICTWIDE HAZARDOUS MATERIALS REMEDIATION CO	32		0.50		0.50														ENVIRONMENTAL TEST/MI	NMB	Aug	4	DIST/ST-WIDE	501				
28	5	411998-1	DISTRICTWIDE SURVEY & MAPPING	32		1.05		1.05														PRELIMINARY ENGINEERIN	NXC	Aug	4	DIST/ST-WIDE	559				
29	5	415409-1	DISTRICTWIDE LANDSCAPE/ARCHITECT DESIG/REVIEWS	32		0.92		0.92														PRELIMINARY ENGINEERIN	JSL	Aug	4	DIST/ST-WIDE	542				
30	5	418403-3	SR 600 (US 17/92) FROM PLEASANT HILL RD TO PORTAGE	32		0.56		0.56														ADD LANES & RECONSTRUC	TAB	Aug	4	OSCEOLA	542				
31	5	419772-3	I-95 INTERCHANGE AT SR 5 (US 1)	32		1.04		1.04														INTERCHANGE - ADD LANES	KCE	Aug	7	VOLUSIA	542				
32	5	427056-1	SR 50/SR 33 FROM CR 565 (VILLA CITY) TO 2ND ST	32		0.14		0.14														NEW ROAD CONSTRUCTION	SCC	Aug	1	LAKE	542				
33	5	434437-5	DISTRICTWIDE GENERAL ENGINEERING CONSULTANT CON	32		5.33		4.00					1.33							Split - Aug 4.00, Jan 1.33		PRELIM ENG FOR FUTURE C	LAB	Aug	4	DIST/ST-WIDE	520				
34	5	436094-3	DISTRICTWIDE GENERAL ENGINEERING CONSULTANT CON	32		5.73		5.73														PRELIM ENG FOR FUTURE C	LAB	Aug	4	DIST/ST-WIDE	520				
35	5	438562-1	I-75 (SR 93) REST AREA MARION COUNTY FROM N OF SR 4	62		0.19		0.19														REST AREA	MEQ	Aug	1	MARION	506				
36	5	439045-2	TSM&O CONTINUING SERVICES CONTRACT FOR DESIGN	32		0.37		0.37														PRELIMINARY ENGINEERIN	JSL	Aug	4	DIST/ST-WIDE	542				
37	5	440787-1	SR 15A AT SR 44 - SOUTHBOUND RIGHT TURN LANE	42		0.20		0.20														ADD RIGHT TURN LANE(S)	RWT	Aug	7	VOLUSIA	551				
38	5	440816-6	PUSHBUTTON CONTRACTOR PROGRAM SIGNAL ENHANCE	32		0.80		0.58		0.08			0.08			0.08				PB; Split - Aug 0.58, Nov 0.08, Jan 0.08, Apr		TRAFFIC OPS IMPROVEMEN	KAM	Aug	7	DIST/ST-WIDE	562				
39	5	444787-1	SR 401 BRIDGE REPLACEMENT	32		0.65		0.65														PD&E/EMO STUDY	TAB	Aug	9	BREVARD	542				
40	5	445213-1	SR 518 (EAU GALLIE BLVD) FROM SARNO RD TO WEST OF	62		0.71		0.71														PAVEMENT ONLY RESURFA	RWT	Aug	7	BREVARD	506				
41	5	445295-1	SR 471 FROM CR 478A TO SR 35/US 301	62		0.98		0.98														PAVEMENT ONLY RESURFA	JJF	Aug	7	SUMTER	506				

To override % used, type over formula.
Change font to orange to indicate no
formula. Copy formula down to re-establish
forecast.



Design Updates

- Bid Questions
- Revisions
- Safety Design Elements

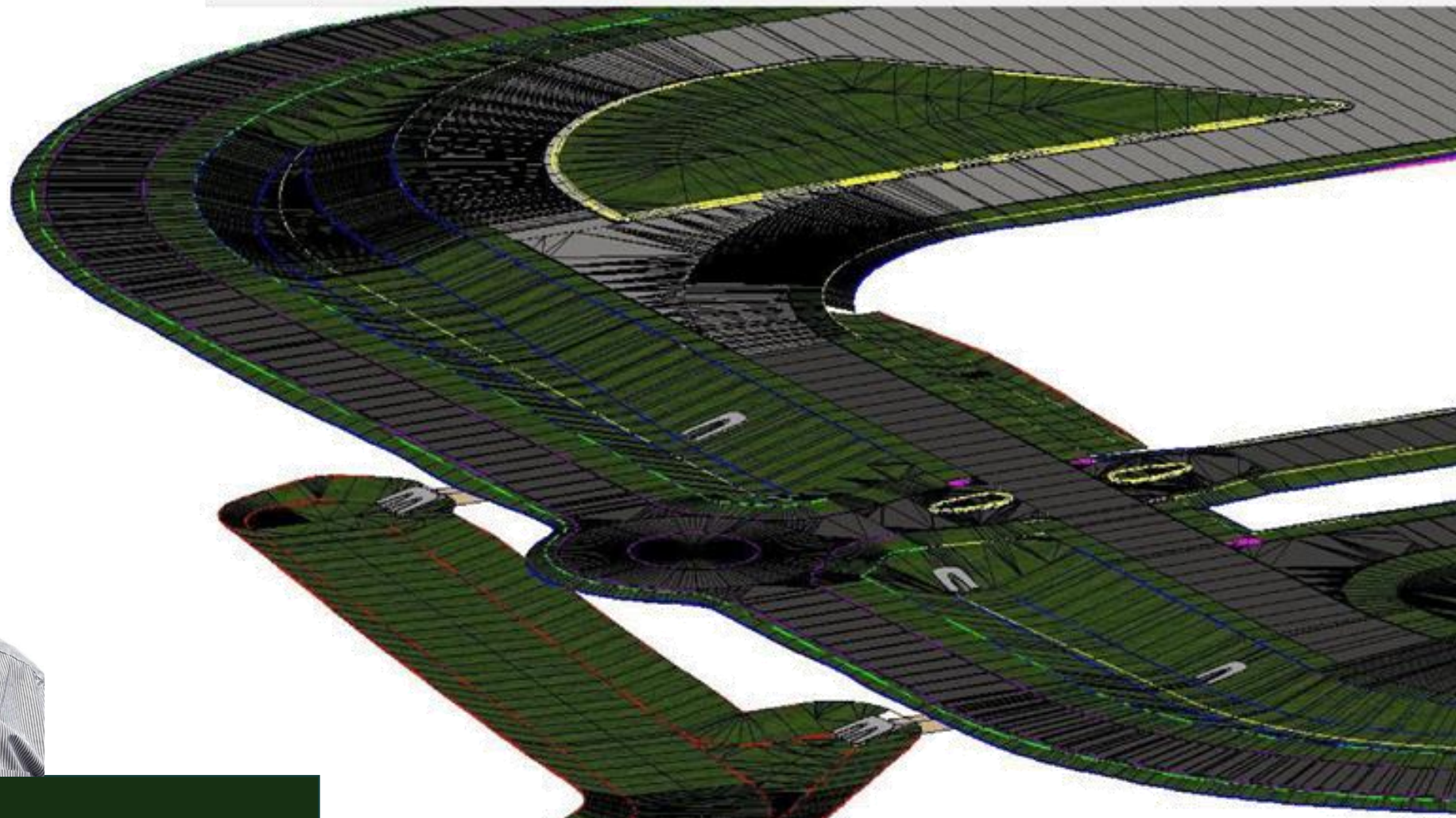


Ed Kestory, P.E.
DDE



3D Design

Naziru, Isaac, P.E.
Roadway Engineer



AMG vs. Non-AMG Projects



- Automated Machine Guidance (AMG) uses digital design data (3D models) to guide construction equipment, like bulldozers and pavers, in real-time.
- AMG replaces or reduces the need for traditional surveying and staking, allowing for more accurate and efficient construction.
- 3D modeling DOES NOT mean project will be an AMG project.
- FDOT AMG projects require use of models as contract documents. Modified Special Provisions (MSPs) are required.
- 3D Design Projects (non-AMG) can still opt to use AMG technology for construction

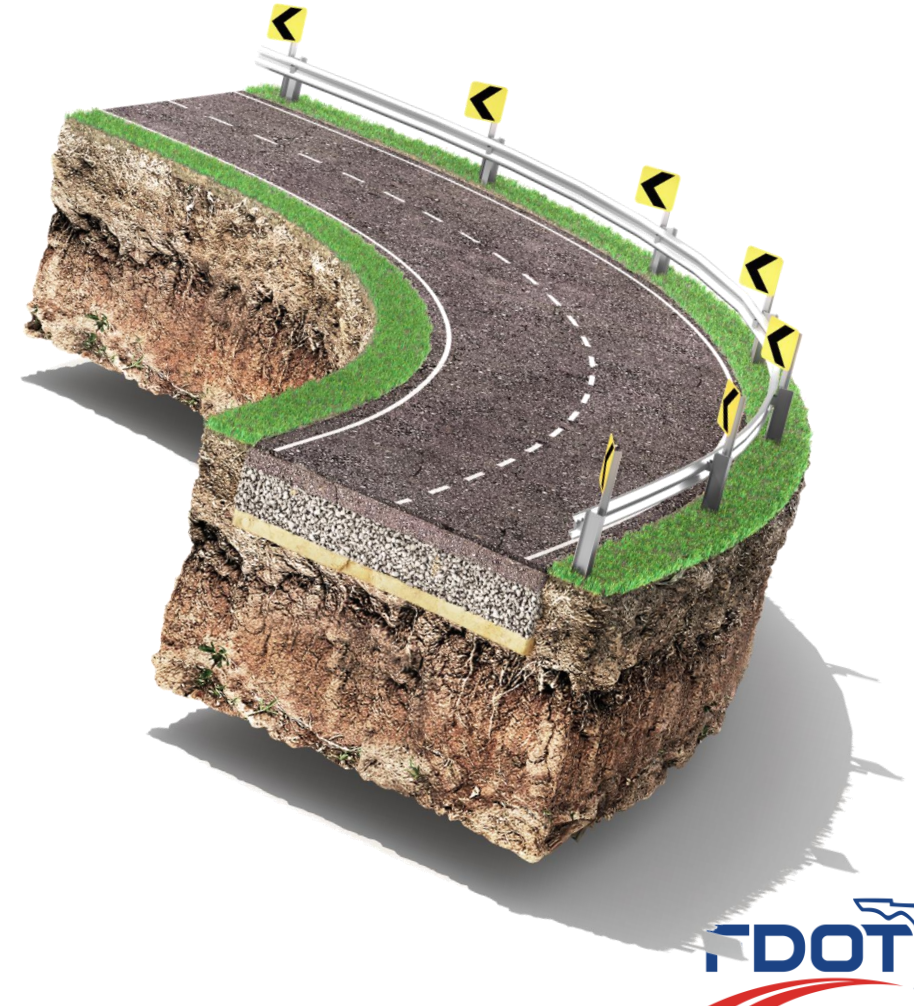
3D Model Design for Construction

Project Types

- Any design project involving earthwork, paving, overbuild or complex geometric requirements

Benefits

- Improved design accuracy
- Refined construction methods
- Reduced errors & re-work
- Streamline construction
- Better communication and collaboration among all stakeholders



AMG for Construction



Benefits

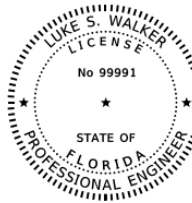
- All Benefits of 3D Design
- Improved accuracy and efficiency:
 - Machinery controlled by model. Improves accuracy and precision of construction.
- Faster construction:
 - AMG can significantly speed up the construction process, leading to faster project completion.
- Improved safety:
 - Reduced need for manual staking can enhance safety on the construction site.

Signing & Sealing 3D Design Projects

- PSM 21-02 Bulletin – Requirement to S&S Earthwork
- BIM Files
 - The FDM 900 Series also provides instructions for when Building Information Model (BIM) files are provided. BIM files are required for:
 - ✓ All related surfaces for earthwork operations and used to determine earthwork quantities
 - ✓ All related surfaces for automated machine guidance (AMG) milling and pavement operations are anticipated
 - ✓ When appropriate, other files where the Level of Development (LOD) is considered construction-ready (LOD 300 and higher)
- BIM Manifest
 - 910.3.4 BIM File Manifest
 - ✓ The BIM file manifest table is placed below the Index of Sheets
- Refer to FDM 130.4 for additional information



BIM Manifest Example



THIS ITEM HAS BEEN DIGITALLY
SIGNED AND SEALED BY:

Luke S. Walker
2022.07.14 16:52:48 - 4'00'
ON THE DATE ADJACENT TO THE SEAL

SIGNATURE MUST BE VERIFIED
ON ANY ELECTRONIC COPIES.

ROADWAY ENGINEERS, INC.
123 MAIN STREET
TALLAHASSEE, FL 32301
LUKE S. WALKER, P.E. NO. 99991

THE ABOVE NAMED PROFESSIONAL ENGINEER SHALL BE RESPONSIBLE FOR THE
FOLLOWING SHEETS IN ACCORDANCE WITH RULE 61G15-23.004, F.A.C.

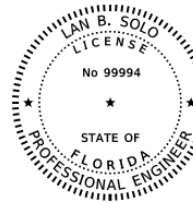
SHEET NO.	SHEET DESCRIPTION
1	KEY SHEET
2	SIGNATURE SHEET
3	DRAINAGE MAP
4 - 5	TYPICAL SECTIONS
6	TYPICAL SECTION DETAILS
7 - 9	MODEL MANAGEMENT
10	PROJECT CONTROL
11	GENERAL NOTES
12 - 14	ROADWAY PLAN PROFILE
18 - 19	DRAINAGE STRUCTURES
32 - 37	UTILITY ADJUSTMENTS

THE ABOVE NAMED PROFESSIONAL IS RESPONSIBLE FOR THE FOLLOWING BIM FILES IN ACCORDANCE WITH RULE 61G15-23.004, F.A.C.

FILE NAME	FILE DESCRIPTION	SHA256 Encryption Code
12345615201\3DDeliverables\AMG-2DSGNRDO1.dgn	AMG file for 3D-Deliverables	8300B8C34652B4CFA33508126A9CA83D4AE283AE44691047C4E73BCDD2A2AD8E
12345615201\3DDeliverables\AMG-MODLRD01.i.dgn		BC738EA02F355718BB04F32EF04AE1200192CDC9F2531249CC207944092A12E9
12345615201\3DDeliverables\AMG-ALGNSR61.xml		BA08AC3CFB8748986AC129DD064CA81D0088B9ABD5A33691357B0AE768D50E4D
12345615201\3DDeliverables\AMG-ALGNBL98.xml		D8A843AA08EC77069804A0774D0EBA984F1B8B4713F66474589DF70745CF6B62
12345615201\3DDeliverables\AMG-3SURFACPR01.xml		56AECC56379686F8FDCB91C97B41739AAE76DB6B5D0C90F58486B32D0AB1B098
12345615201\3DDeliverables\AMG-3SURFACERX01.xml		58793EFD020A3452E7B521C101E5FFACB081B57FADE42401E3AB58AE2ABE1A21
12345615201\3DDeliverables\AMG-3SURFACERW01.xml		15D9BCA09E81EA498C070705C2FA7E34232B25ED9F380507FADE7712C0B929A
12345615201\3DDeliverables\AMG-3DSGNRDEW01.dwg	AMG file for 3D-Deliverables	7ADF218242F4EFA858B7AEF36425C628A5AF0BA1B4E9CBCTA16691704B2EC9
12345615201\3DDeliverables\AMG-3DSGNRDEW01.dgn	AMG file for 3D-Deliverables	52C6233959FF3A8F3B96DAC21D9F8973A2112E9ABE94E03539A27A0D3044519
12345615201\3DDeliverables\AMG-3DSGNRDO1.dwg	AMG file for 3D-Deliverables	7F25DF5C0D3F3799E3A457B93CD1AA97255E1B3C1C40361925A3B7294F140745
12345615201\3DDeliverables\AMG-3DSGNRDO1.dgn	AMG file for 3D-Deliverables	9E41F7E20C9EA6384FF41E9FD59085C18B79D7487E865BC2E9B00DE4663EF47B

https://remn178.github.io/online-tools/sha256_checksum.html

Exhibit 910-4
Signature Sheet
Date: 1/1/2025



THIS ITEM HAS BEEN DIGITALLY
SIGNED AND SEALED BY:

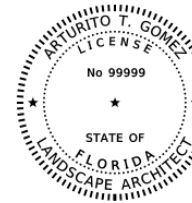
Lan B. Solo
2022.07.14 16:42:28 - 4'00'
ON THE DATE ADJACENT TO THE SEAL

SIGNATURE MUST BE VERIFIED
ON ANY ELECTRONIC COPIES.

ROADWAY ENGINEERS, INC.
123 MAIN STREET
TALLAHASSEE, FL 32301
LAN B. SOLO, P.E. NO. 99994

THE ABOVE NAMED PROFESSIONAL ENGINEER SHALL BE RESPONSIBLE FOR THE
FOLLOWING SHEETS IN ACCORDANCE WITH RULE 61G15-23.004, F.A.C.

SHEET NO.	SHEET DESCRIPTION
2	SIGNATURE SHEET
32 - 37	UTILITY ADJUSTMENTS



THIS ITEM HAS BEEN DIGITALLY
SIGNED AND SEALED BY:

Arturito T. Gomez
2022.07.14 15:35:15 - 8'00'
ON THE DATE ADJACENT TO THE SEAL

SIGNATURE MUST BE VERIFIED
ON ANY ELECTRONIC COPIES.

LAND DESIGN, LLC.
345 IVY LANE
ORLANDO, FL 32801
ARTURITO T. GOMEZ, L.A. NO. 99999

THE ABOVE NAMED LANDSCAPE ARCHITECT SHALL BE RESPONSIBLE FOR THE
FOLLOWING SHEETS IN ACCORDANCE WITH RULE 61G10-11.001, F.A.C.

SHEET NO.	SHEET DESCRIPTION
2	SIGNATURE SHEET
38 - 41	SELECTIVE CLEARING AND GRUBBING

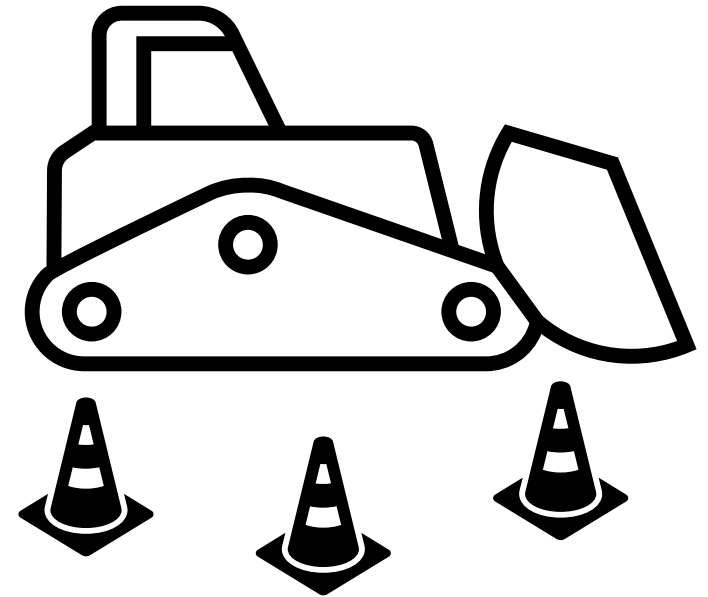
REVISIONS				ENGINEER OF RECORD	STATE OF FLORIDA DEPARTMENT OF TRANSPORTATION			SHEET NO.
DATE	DESCRIPTION	DATE	DESCRIPTION	LUKE S. WALKER, P.E. LICENSE NUMBER: 99991 ROADWAY ENGINEERS, INC. 123 MAIN STREET TALLAHASSEE, FL 32301				
				ROAD NO.	COUNTY	FINANCIAL PROJECT ID	SIGNATURE SHEET	2
				SR 22	BAY	123456-1-52-01		

BIM Manifest – AMG Example

BIM FILES IDENTIFIED AS PLANS TO SUPPORT EARTHWORK			
FILE NAME	FILE DESCRIPTION	SHA256 Encryption Code	
44290715201\3DDeliverables\MODEL 06\AMG-3DSGSRD06.dgn	AMG file for 3D-Deliverables	5E58825DC9AD98D2F6609D43291042D29B4170CF206E9DD8FA8324CA8D08401E	
44290715201\3DDeliverables\MODEL 06\AMG-3DSGSRD06.dwg	AMG file for 3D-Deliverables	DE005C9795746400FA76255056FD9FAC5C036A94805DD71ECB227A7D5DB22289	
44290715201\3DDeliverables\MODEL 06\AMG-3DSGSRD06 WIDENING.dgn	AMG file for 3D-Deliverables	B808DE8D8F8B9C8E88FC232F5FF4D88BF AA48A8DE39CF52869CD0BC9079F7BF	
44290715201\3DDeliverables\MODEL 06\AMG-3DSGSRD06W06.dgn	AMG file for 3D-Deliverables	694698005CC35848CB139C621021028C9D3027455288BAAA4721239B6543CE41	
44290715201\3DDeliverables\MODEL 06\AMG-3DSGSRD06W06.dwg	AMG file for 3D-Deliverables	3DD958B0C2DEB1472BF4B7E828ED5C183230CF660C1CC6EBA5D4577A0B5EB165	
44290715201\3DDeliverables\MODEL 06\AMG-3DSGSRD All-BreakLines 06.dgn	AMG file for 3D-Deliverables	947ED20016DF2281EBD6ACDB199CBC5FC0B7A62A74143E173CF4A41EE3E91E7B	
44290715201\3DDeliverables\MODEL 06\AMG-3DSGSRD All-BreakLines 06.dwg	AMG file for 3D-Deliverables	836DA60FA8956B30EFC6B6D5E8E5721185477748397736E1592C7C8FC2946E88	
44290715201\3DDeliverables\MODEL 06\AMG-3SURFACEW06.xml	AMG file for 3D-Deliverables	44EA964BF6F6046B62084CF98B8C150FFBA7A0A588F30B5DE734D90E4A57SCA8	
44290715201\3DDeliverables\MODEL 06\AMG-3SURFACEPR06.xml	AMG file for 3D-Deliverables	5B3E888B60D54FE9A626BBFE183EC9767E27C43E47526C482DA39F65FCEB5CD4	
44290715201\3DDeliverables\MODEL 06\AMG-3SURFACEPR06 MILLING.xml	AMG file for 3D-Deliverables	ED4374502DBD4B9A14448F0AAA8AD34C247A1E8C6011600D48A66E3165BCB372	
44290715201\3DDeliverables\MODEL 06\AMG-3SURFACEPR06 OVERBUILD.xml	AMG file for 3D-Deliverables	CFCD1F447F36ECCD22D8BFC95DA9F159CC18828EA41CB11F8465127D2D0A908	
44290715201\3DDeliverables\MODEL 07\AMG-3DSGSRD07.dgn	AMG file for 3D-Deliverables	AC75F1C19725AF655CC8D71BC0BC6CF A8576EF52B9A985DE038F3008BC8C2E2F	
44290715201\3DDeliverables\MODEL 07\AMG-3DSGSRD07.dwg	AMG file for 3D-Deliverables	39984D003812919803AFE33C86D7D93DF03B9AFCB412AC2A811304048A05B2AF	
44290715201\3DDeliverables\MODEL 07\AMG-3DSGSRD07W07.dgn	AMG file for 3D-Deliverables	135854AD320480771FFB950A705CE075803F64061196BEA0F6CA6D71234A59E	
44290715201\3DDeliverables\MODEL 07\AMG-3DSGSRD07W07.dwg	AMG file for 3D-Deliverables	03E672E91432C801404097737C3BFD80D0435A8B0F5460D1F027F0389FAC91	
44290715201\3DDeliverables\MODEL 07\AMG-3DSGSRD All-BreakLines 07.dgn	AMG file for 3D-Deliverables	25098085D96D34257ABCFD0430A12BC0B700EDB4EE0F05A7703D92EB35F4E6F	
44290715201\3DDeliverables\MODEL 07\AMG-3DSGSRD All-BreakLines 07.dwg	AMG file for 3D-Deliverables	214C53CE96989A5BA69208D385D491CCD95677CE76784EF6E94884000E07D920	
44290715201\3DDeliverables\MODEL 07\AMG-3SURFACEW07.xml	AMG file for 3D-Deliverables	ED242B01EE1A4D7DFC06B2683FA79ED03A75D70C242434D5DE8A12199E3F3C2	
44290715201\3DDeliverables\MODEL 07\AMG-3SURFACEPR07.xml	AMG file for 3D-Deliverables	FAEA434CA96901E86B9E4F4511B6712D4831A2657F87459F70DF7F696302608	
44290715201\3DDeliverables\MODEL 07\AMG-3SURFACEPR07 MILLING.xml	AMG file for 3D-Deliverables	5092752B48128F502B08DE2727A90F57AB7E54F7A24D4BB311B11E355B7398E1	
44290715201\3DDeliverables\MODEL 07\AMG-3SURFACEPR07 OVERBUILD 1.xml	AMG file for 3D-Deliverables	A26BA7D09A34A78BB4F163B7F6397982A7EEB15608A462DF92E0B70315CA577	
44290715201\3DDeliverables\MODEL 07\AMG-3SURFACEPR07 OVERBUILD 2.xml	AMG file for 3D-Deliverables	F4DE772A1C3D1F00630F6541C975D95F69EBECBE69E790C4C32E0BED177978	
44290715201\3DDeliverables\MODEL 08\AMG-3DSGSRD08.dgn	AMG file for 3D-Deliverables	F558381A0F1D042F06FEA71EF4A80F268D33961050A72726C4A1AACB73BD916F	
44290715201\3DDeliverables\MODEL 08\AMG-3DSGSRD08.dwg	AMG file for 3D-Deliverables	D9E9AEFB454EE6EAD27FDF1FE499EF1037E1B6F46E5076229239CDF040DF0A2	
44290715201\3DDeliverables\MODEL 08\AMG-3DSGSRD08W08.dgn	AMG file for 3D-Deliverables	80812A09526081C949098757DC989D8C28E1781C2B990C1A2FC4C9A1F16118	
44290715201\3DDeliverables\MODEL 08\AMG-3DSGSRD08W08.dwg	AMG file for 3D-Deliverables	55605BC5E166CC574B838356E95BA25C6ED2518FFCEA88C38D87BD40F00F26F31	
44290715201\3DDeliverables\MODEL 08\AMG-3DSGSRD All-BreakLines 08.dgn	AMG file for 3D-Deliverables	DD1E8AC62473856283C9F74FEE443F35F7D994FA68351FCFC916553A88703E41	
44290715201\3DDeliverables\MODEL 08\AMG-3DSGSRD All-BreakLines 08.dwg	AMG file for 3D-Deliverables	FC841980FA26C7E62651C5C9CFDD46487A67A93BF7C6D2A1DC2669FBB365F77	
44290715201\3DDeliverables\MODEL 08\AMG-3SURFACEW08.xml	AMG file for 3D-Deliverables	BC6D2020B0B1026E8580CB9C87F7ED70427670001F422E2012551C94177993A	
44290715201\3DDeliverables\MODEL 08\AMG-3SURFACEPR08.xml	AMG file for 3D-Deliverables	9898A4EBDD0C24D83A2FF17662858014AF1889DE4D98C02958BD0EF65FCC2CC66	
44290715201\3DDeliverables\MODEL 08\AMG-3SURFACEPR08 MILLING.xml	AMG file for 3D-Deliverables	79750447EE8C9C99BFA7B1F03AC44391AB4DE1570D2B70839BA296F106FD4BE	
44290715201\3DDeliverables\MODEL 08\AMG-3SURFACEPR08 OVERBUILD 1.xml	AMG file for 3D-Deliverables	3130EBB3ADB863531EE7DD93885225F7C918D63284CC38E4D069A36845DD63D	
44290715201\3DDeliverables\MODEL 08\AMG-3SURFACEPR08 OVERBUILD 2.xml	AMG file for 3D-Deliverables	263686DD1DC5C49444789B1056E80C39A630F45C911A5C58AC7FE0F2241225F3	
44290715201\3DDeliverables\MODEL 09\AMG-3DSGSRD09.dgn	AMG file for 3D-Deliverables	E721708528234AB885925EA64897A676313F417BD299B9F8139826E486107F49	
44290715201\3DDeliverables\MODEL 09\AMG-3DSGSRD09.dwg	AMG file for 3D-Deliverables	F4804CF66037180FA71E290496826277FC3F0CE085ED4C1768E7AF7004C2751	
44290715201\3DDeliverables\MODEL 09\AMG-3DSGSRD09W09.dgn	AMG file for 3D-Deliverables	30248660AB23A6F1EF47E7C5849801F5F30095B75D392DF3F366DF513F6679AE	
44290715201\3DDeliverables\MODEL 09\AMG-3DSGSRD09W09.dwg	AMG file for 3D-Deliverables	9FB87735F65948628381991CBDD668B475A45120EA034FD9B1AD7D8CFBE525A	
44290715201\3DDeliverables\MODEL 09\AMG-3DSGSRD All-BreakLines 09.dgn	AMG file for 3D-Deliverables	5FA40E251D627B29FD6726C4040DF6600B6030262C257467968624D8DD198118	
44290715201\3DDeliverables\MODEL 09\AMG-3DSGSRD All-BreakLines 09.dwg	AMG file for 3D-Deliverables	E2E6A278BE557358DF46E7E4A823E0A248AEB4B957BE39A1AE66B0768A2F3E09	
44290715201\3DDeliverables\MODEL 09\AMG-3SURFACEW09.xml	AMG file for 3D-Deliverables	B1D2402831CC40CDDF73FD6C6F69AB268CC6DA0796B7E85063D7104230C6D25B	
44290715201\3DDeliverables\MODEL 09\AMG-3SURFACEPR09.xml	AMG file for 3D-Deliverables	0A3DDC9EC0A6F861F390A18FA37A7AA39F84B5C57FA3949801E962A1A07D95E	
44290715201\3DDeliverables\MODEL 09\AMG-3SURFACEPR09 MILLING.xml	AMG file for 3D-Deliverables	B4F854F7B64C1285D43A46B26EA4439DA73B6CB5A332B232437888750FA480F	
44290715201\Roadway\MODLRD01.dgn	AMG file for 3D-Deliverables	E0C1F5EF99AE55B29717FE8C53B11B2D95FD92F2CCCE29FCDB48DB35A63CE736	
44290715201\Roadway\MODLRD02.dgn	AMG file for 3D-Deliverables	EFC0D3E43F48C94B34D9F3D121C1ACF39910943248397D1715EFBEF1F400CDCC	
44290715201\Roadway\MODLRD03.dgn	AMG file for 3D-Deliverables	6CA0DD0F3E1E326A0A67674637B82C708148A7524C4860377518C079297B4792	
44290715201\Roadway\MODLRD04.dgn	AMG file for 3D-Deliverables	309D9F5215CEC5B6A09C0BA51A10CB834FA8694960F88653129CB582D63A81B4	
44290715201\Roadway\MODLRD05.dgn	AMG file for 3D-Deliverables	0849D7DE1516CC2BE3A09E05CD15D9B660F634FE4CE27D99C9F40757B7374956	
44290715201\Roadway\MODLRD06.dgn	AMG file for 3D-Deliverables	7D5AB0ACFBA36BC70A8EF27F40D50AEC3B609E14486C160D5F2E0B8996D10FE8	
44290715201\Roadway\MODLRD07.dgn	AMG file for 3D-Deliverables	50A3705409B29E620A352E8EF5C4A6354B7DE7A9472FE4E556D0864AB80B5494	
44290715201\Roadway\MODLRD08.dgn	AMG file for 3D-Deliverables	418AF02C01FDBA08F7B29545D83D2AB86CE5F178EDDEC6E9CE30554980BC6E45	
44290715201\Roadway\MODLRD09.dgn	AMG file for 3D-Deliverables	C907B239177DE57704B9D11356776C7EAF73AA11629A5D0CE2D0FD0E78988FC	
44290715201\Roadway\MODLRDwidening06.dgn	AMG file for 3D-Deliverables	CFD5E7F686514D37E980D82DFDD5A1385C4E65BDC6CA06608B92F22BF080E	

Deliverables and Expectations Moving Forward

- AMG Projects – If interested in pursuing project as AMG, discuss with FDOT Project team prior to negotiation
- AMG Deliverables – If included in negotiations, provide surfaces per CADD Manual
 - Include in Phase III ERC Submittal
- Models and Surfaces – construction ready!
- BIM Manifest for Earthwork at a minimum



Questions?

Naziru Isaac, P.E.
Naziru.Isaac@dot.state.fl.us
386-943-5547



ACEC Update



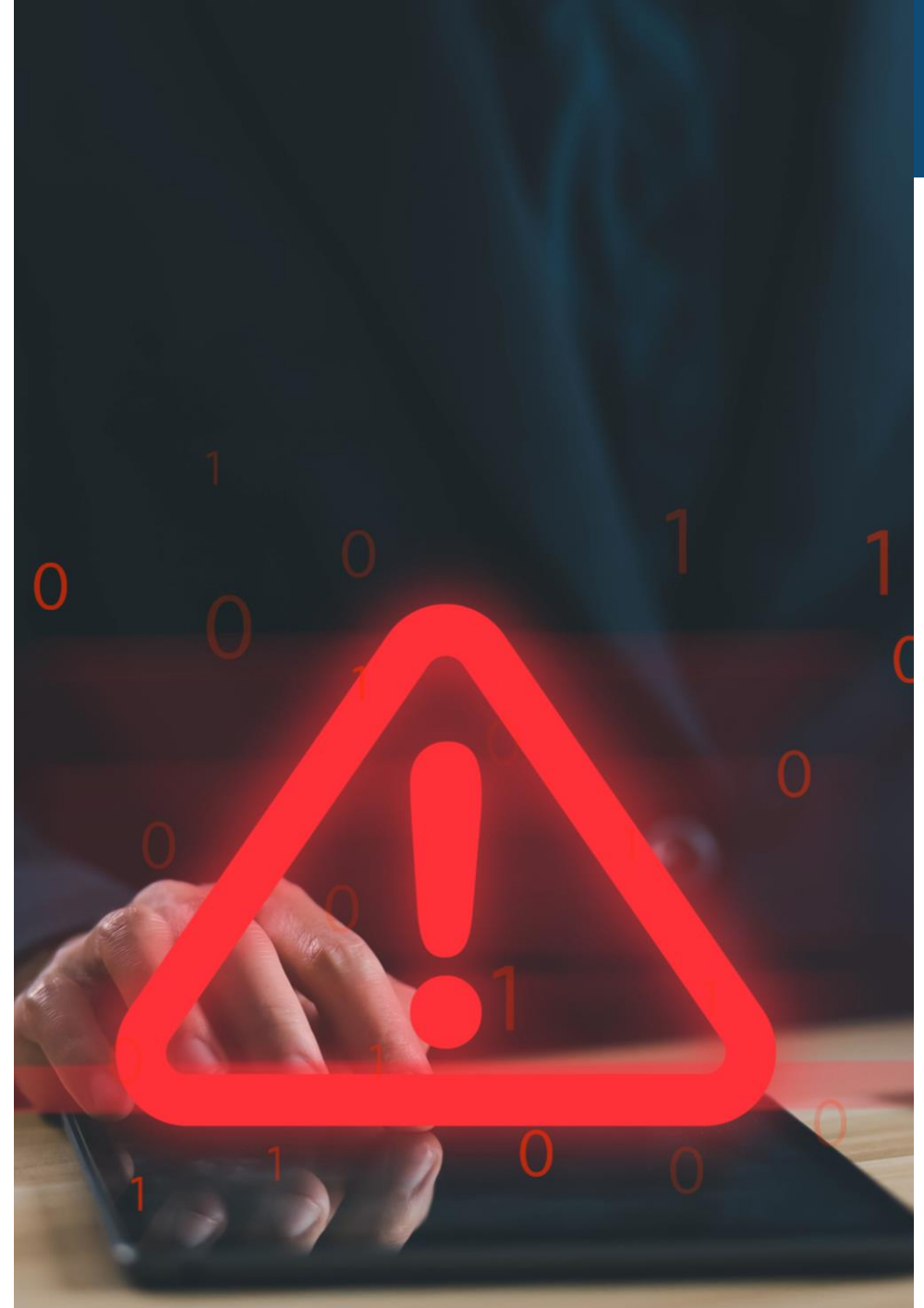
Mark Hales, P.E.





John Hatfield, P.E.
District Construction
Engineer

Errors & Omissions with Pay Item Quantities



Questions?



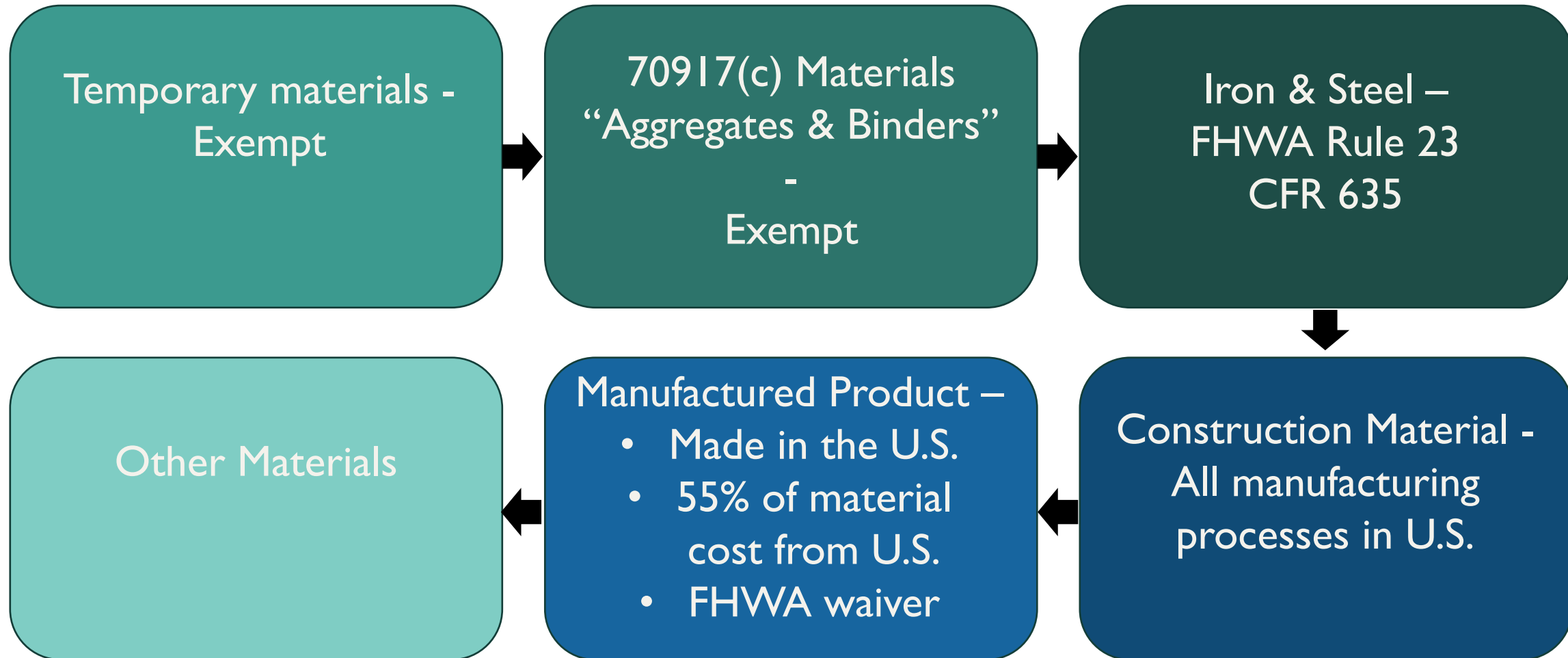


Product Evaluation – BABA Concerns

Missy Hollis
Product Evaluation Coordinator



BABA: Federal Guidance



BABA: Federal Guidance

Construction Material

- Non-Ferrous metals
- Plastics/polymers, composites
- Glass
- Fiber optic cable, optical fiber
- Lumber
- Engineered wood, drywall
- ALL U.S. manufactured**

Manufactured Product

- Electronics
- 55%+ U.S. manufactured
- FHWA Waiver

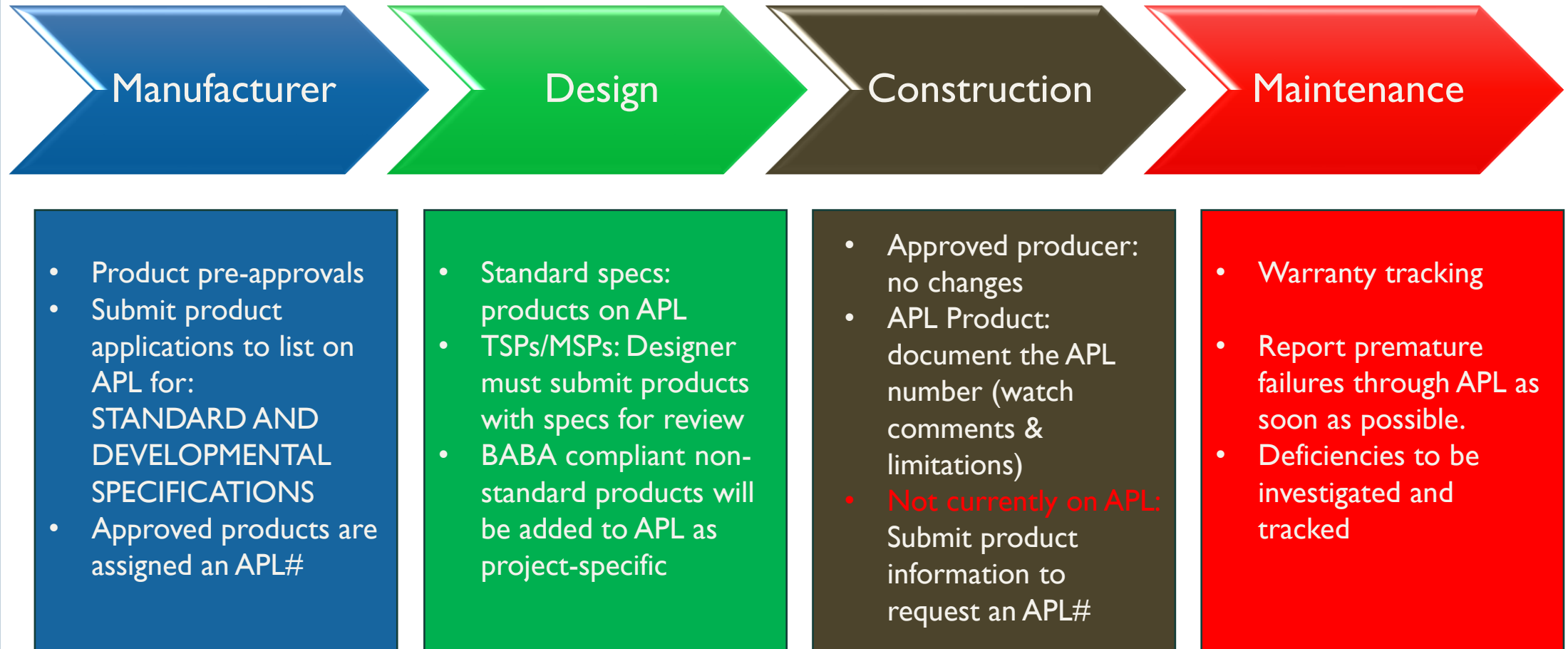
Specific rules for Coatings, Incidentals, and other unique situations*

- Glass beads vs Coated glass
- Coated vs Uncoated Materials (incidental coatings)
- Construction material vs manufactured mproduct (Pole with incidentals doesn't change the pole)

For most items, BABA classification is based on FDOT Specifications and how the product or material arrives at the construction site.

*Call Product Evaluation for assistance.

Big Picture – FDOT BABA Compliance



FDOT Implementation

Federal Rules based on Obligation Date (FDOT Letting Date)

Federal Requirements specify implementation based on when Federal Funds are obligated. All FDOT implementation dates will be adjusted based on the Letting dates occurring on/after the obligation/authorization date.

Applicable to All Construction Projects*

- Section 6 of FDOT Standard Specifications
- Federal fund codes may be present within state project number or earlier project sequence
- Funds may be from HUD, EPA, Homeland Security, and other Federal agencies.

**Funding codes will be considered only for specific situations.*

All Products listed on the APL, with BABA eligibility

- Avoid inconsistencies due to determinations by District, Designer, Contractor, or CEI
- Watch the comments and limitations for specific products

Letting Date is Important

1980s

Iron & Steel: Collect “steel certificate” as products arrive
Many products from approved producers or fabricators

January 2024 lettings- APL added MANY products

Iron & Steel

Construction Materials: BABA rules for plastics, non-ferrous metals, etc.

Manufactured Products: Waiver

January 2026 lettings- APL limitations

Iron & Steel

Construction Materials

Manufactured Products: Final Assembly Rule

January 2027 lettings

Iron & Steel

Construction Materials

Manufactured Products: 55% Rule

Notice the effective dates. Applicable rules depend upon the obligation/letting date!

Waivers for Specific Product Types

Standard Specs: No Products available

- **Non-Availability**
Blanket Waiver
- Need to identify when products will become available

6-12 months, statewide- in progress now. **Domestic products MUST be used** before waiver allows non-domestic products.

Standard Specs: Some Products available

- Use Domestic products first
- **Limited Availability Waiver-** Justify why non-domestic option is needed

Non-Standard Specs (TSP, MSP, notes)

- Project Specific **Public Interest waiver** needed
- Must justify why non-domestic product is in the Public Interest

12-24 months, project specific.
Contact Product Evaluation for assistance

FDM 110 and Constructability Review

BABA Rules
23 CFR 635.410
and 2 CFR 184

“No Federal-aid highway construction project is to be authorized for advertisement or otherwise authorized to proceed unless the manufactured products used and permanently incorporated in such project are produced in the United States.”

Helpful Hints

Use **Standard Specifications or Developmental Specifications** whenever possible.
Manufacturers submit product applications for APL approval

Avoid sole sourcing whenever possible. Products may require a waiver.

TSPs and MSPs have no pre-approved products; the specs and products are all project specific!
APL products approved for previous TSPs may no longer have a waiver in effect.

Use caution with old specs. Repeated usage may require developmental specs- to enable manufacturers to submit BABA documentation.

To Learn More

Training is announced through the FDOT Contact Mailer.

Sign-up at <https://cma.fdot.gov/>
Select the APL as an interest.



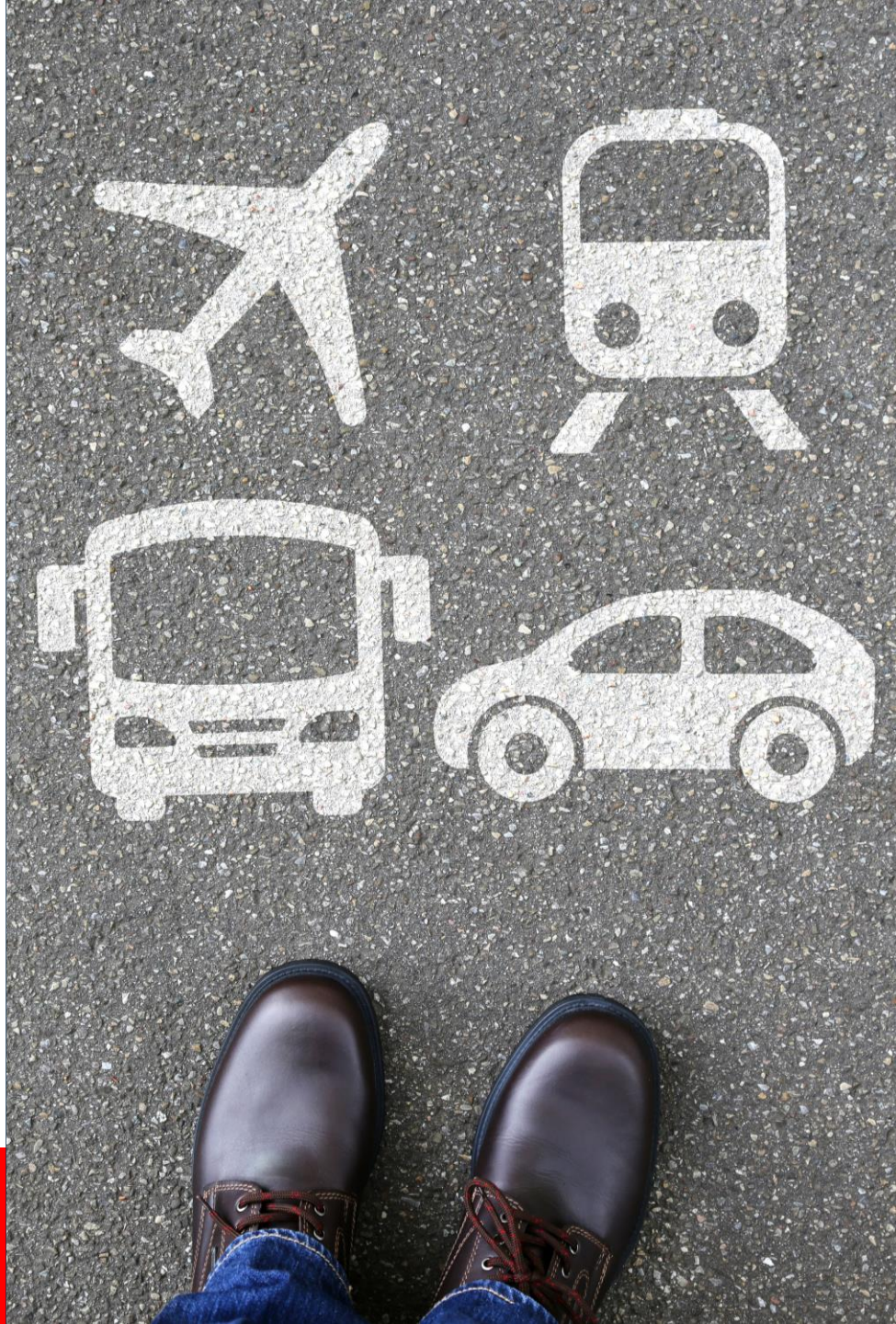
Contact

Product.Evaluation@dot.state.fl.us
for additional information



Questions?



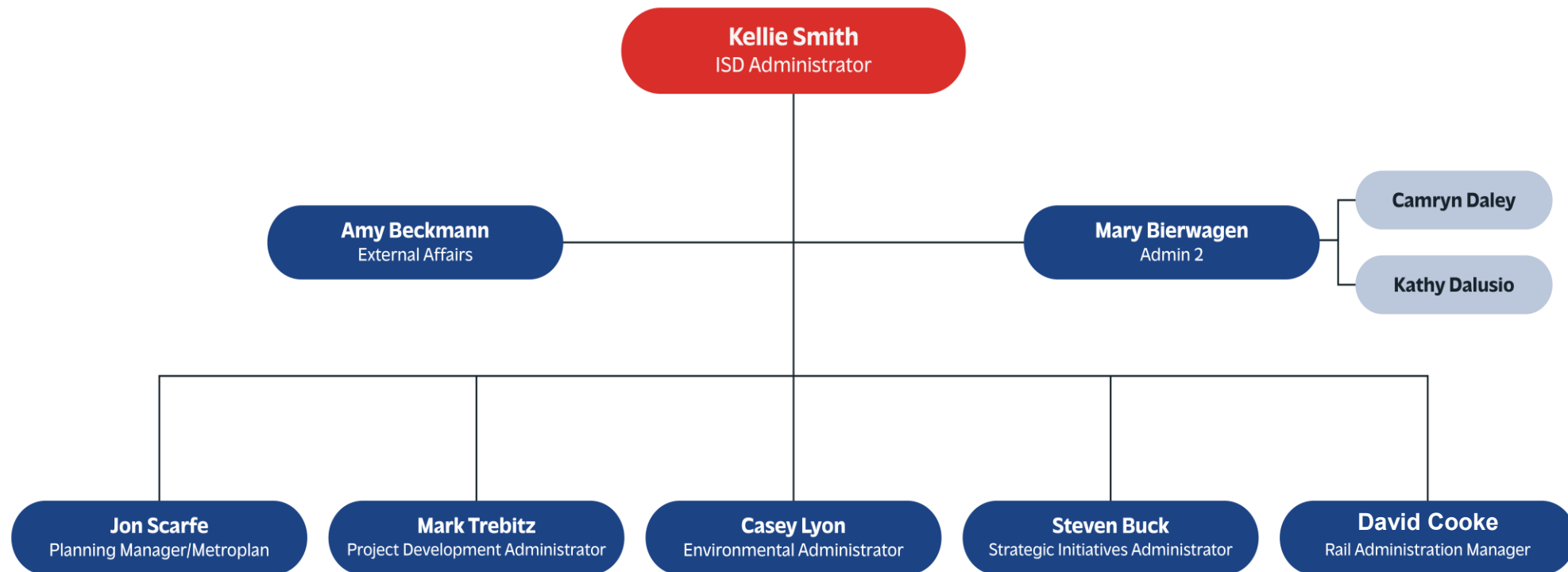


Intermodal Systems Development Update

Kellie Smith
ISD Administrator

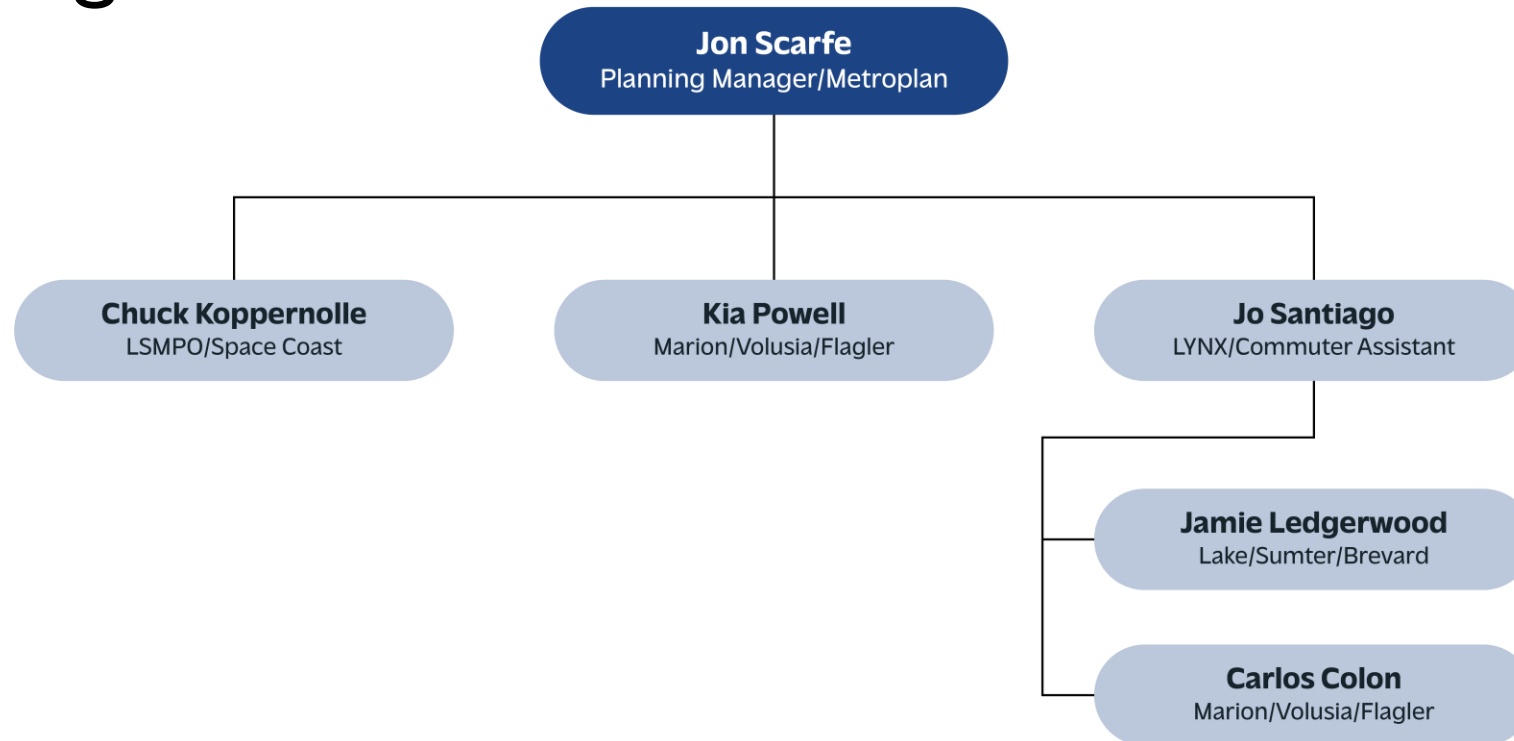
Intermodal Systems Development

Leadership Team



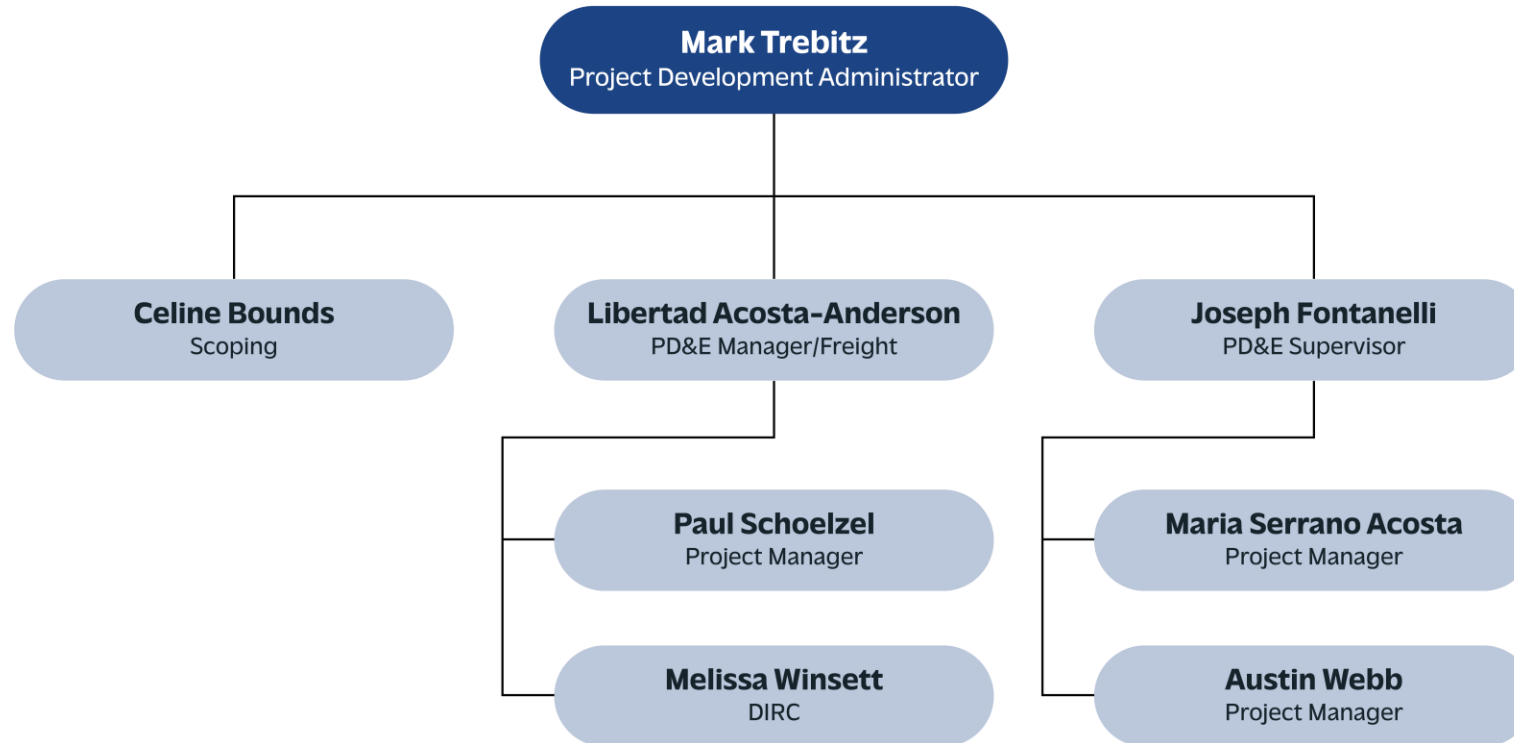
Intermodal System Development

Planning Team



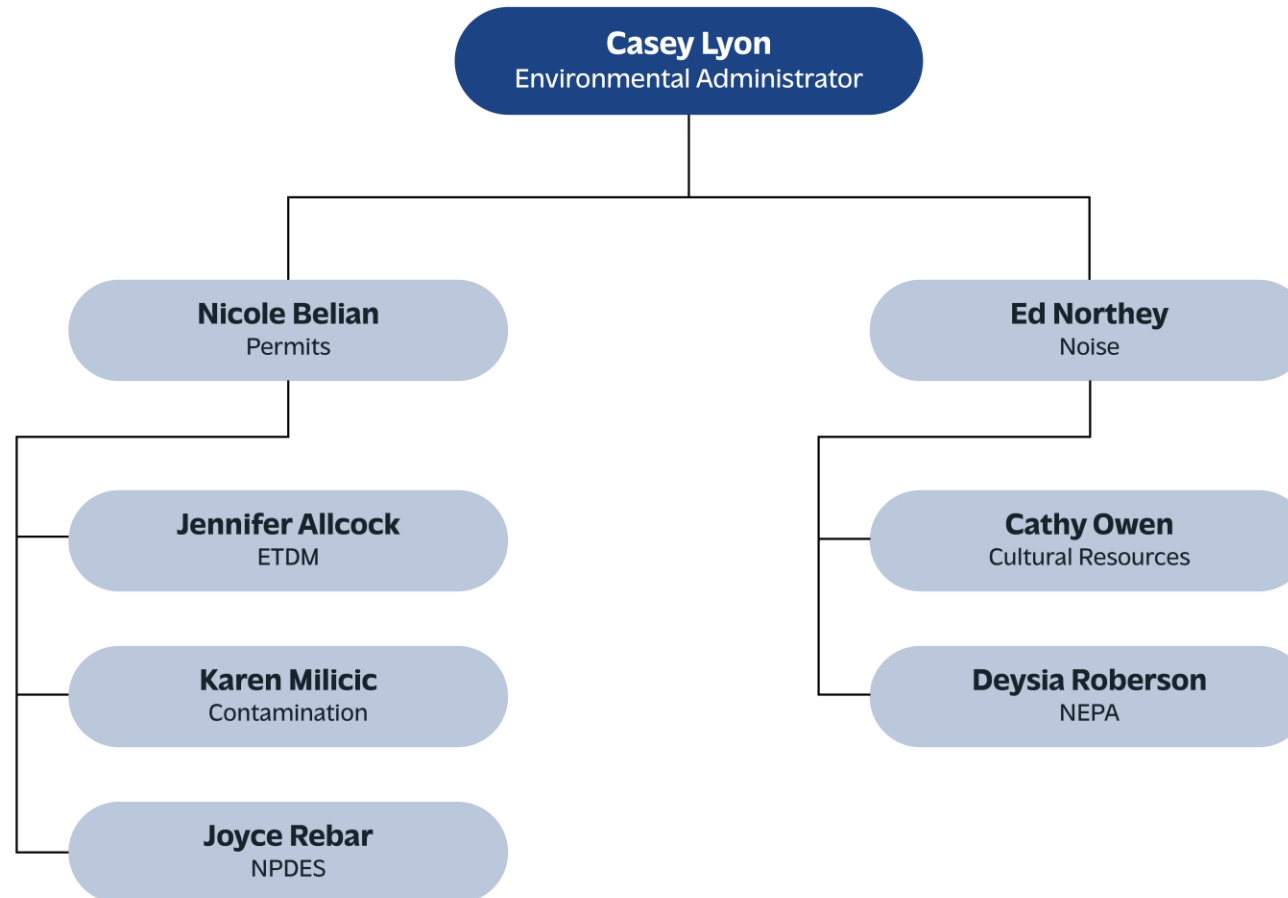
Intermodal System Development

Project Development



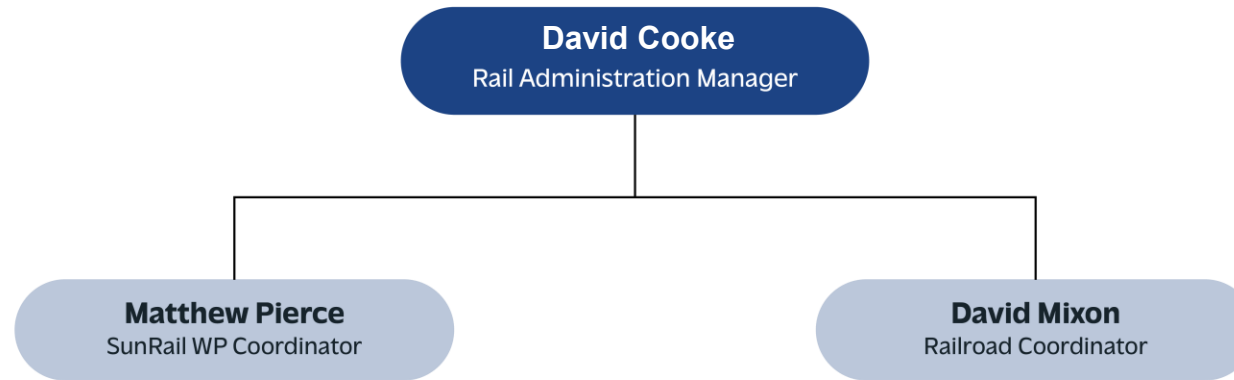
Intermodal System Development

Environment



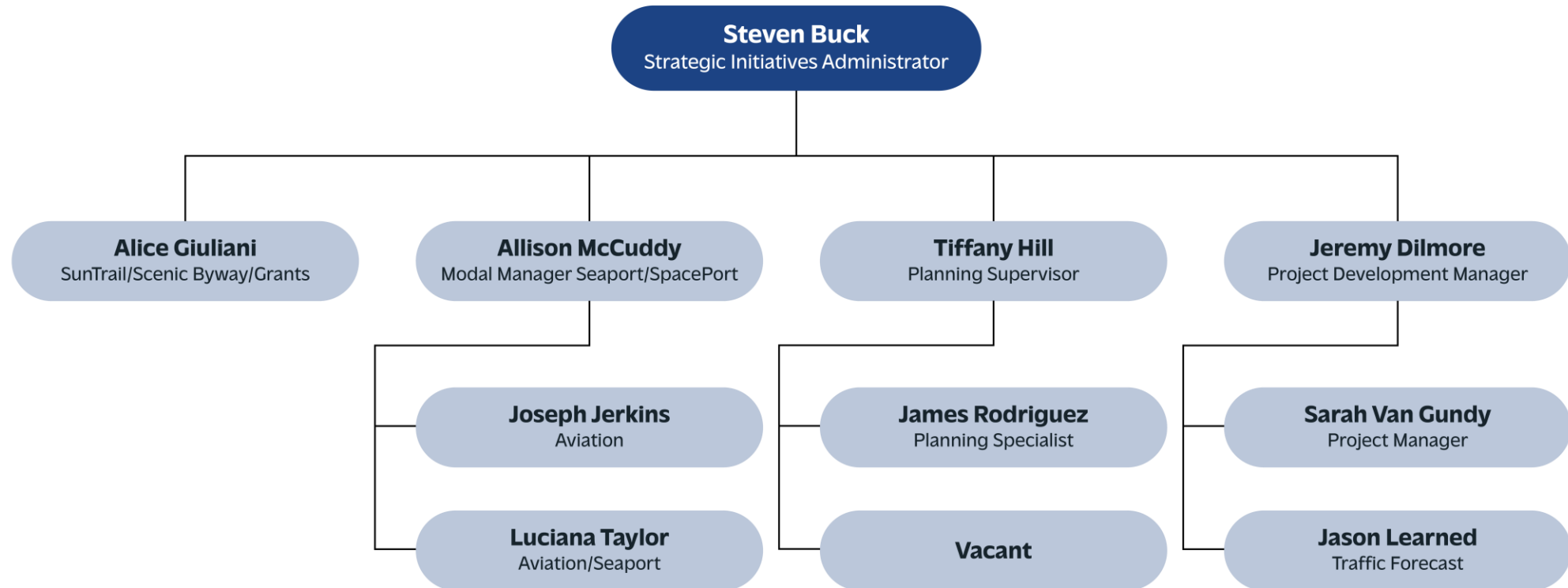
Intermodal System Development

Rail



Intermodal System Development

Strategic Initiatives



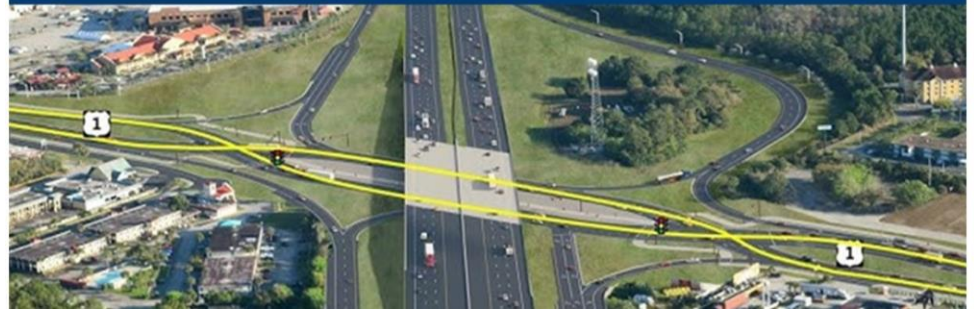
Questions?





Steven Buck, P.E.
Strategic Initiatives
Administrator

Coordinating Interchange Design Changes



Where to Go with Questions



District Interchange Review Coordinator (DIRC)

- First point of contact for determining documentation and approval requirements
- District Five DIRC is Melissa Winsett

Melissa.Winsett@dot.state.fl.us

Interchange Access Requests (IAR)

IJR

Interchange Justification Report

IMR

Interchange Modification Report

IOAR

Interchange Operational Analysis Report

**NON
IAR**

Non-Interchange Access Report

IMR and IJR

Interchange Modification Report (IMR)

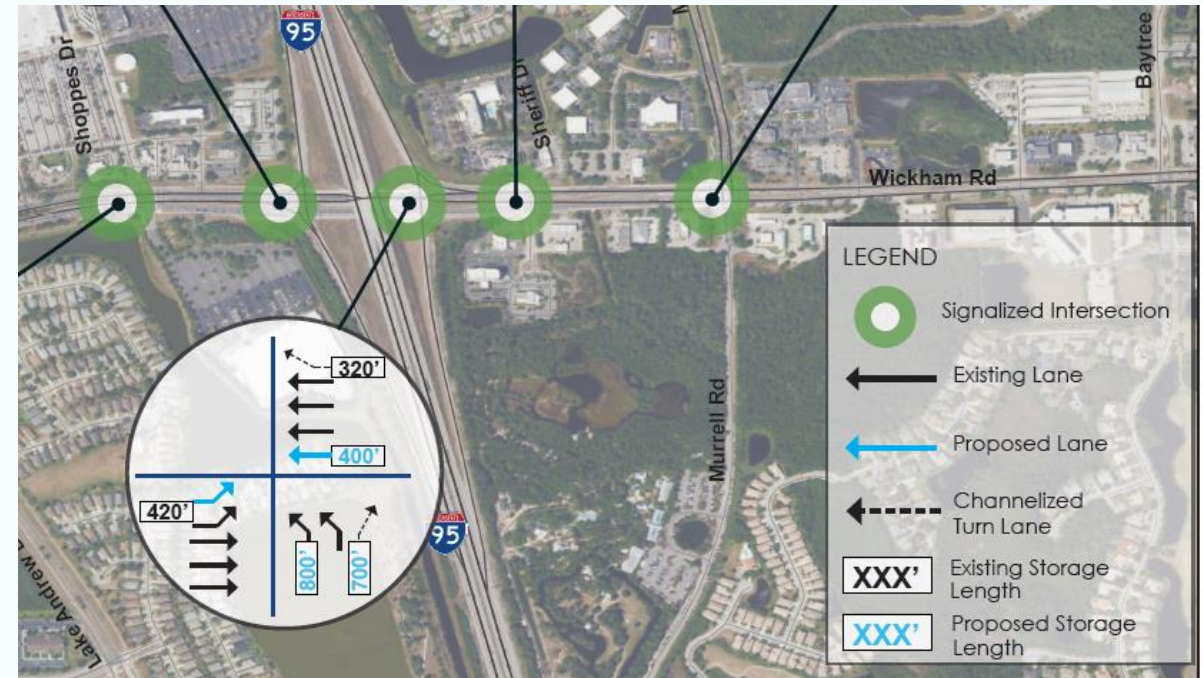
- Changes to the ramp gore point

Interchange Justification Report (IJR)

- New interchange

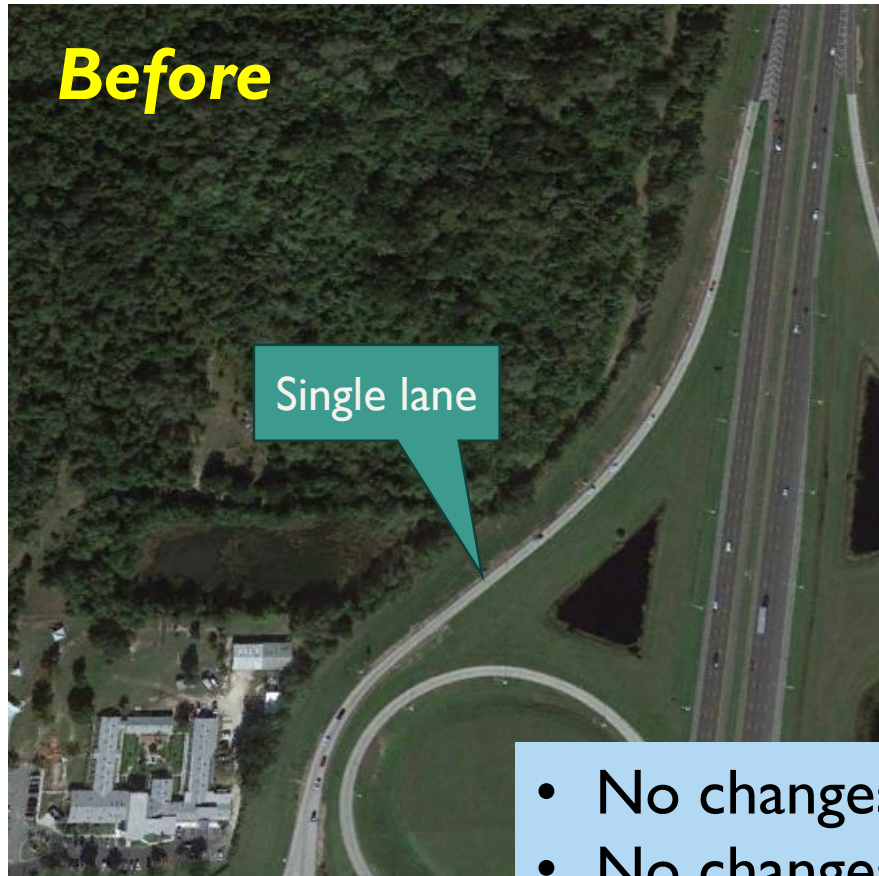
Examples of an IOAR

- Shortening an off-ramp
- Adding lanes to an on-ramp while maintaining gore point
- Changing ramp terminal control (e.g., signalization)
- Increase number of lanes at on-ramp gore point outside the weaving area



Example of a Non-IAR

Widening SB I-95 off ramp to LPGA Boulevard



- No changes at the gore point
- No changes at the ramp terminal
- No IAR approval

Non-Interchange Access Requests (Non-IARs)

Improvements
that “may not”
require a formal
FHWA approval

DIRC
coordination
must be
scheduled

DIRC will
determine if the
improvement is
a Non-IAR

Requires presentation at the DIRC Meeting

Non-IAR Examples that Require Traffic Analysis Report

- Managed lanes slip ramps
- Addition or removal of arterial through lane
- Addition of storage lanes at the off-ramp
- Ramp modification that does not shorten an off-ramp.
- Extension of an acceleration lane

*Interchange Access
Request User's Guide
has more examples*

Two Kinds of Design Projects

**Had a prior
IAR approval**



May require a re-evaluation
of the previously approved
access request

**No PD&E phase
and/or IAR approval**



May require a new access
request approval

Design Changes

- Ramp terminal intersection
- Adjacent intersections
- Limited Access ROW
- Accel/Decell lanes
- Interchange ramps

Any change to an interchange element during Design phase requires coordination with the DIRC

IAR Report Review and Approval Process

1 **Methodology**

4 months

2 **Analysis and
Documentation**

4+ months

3 **Review and
Approval**

4 months

Interchange Access Approval Authorities

FHWA HQ in Washington, D.C. Review

FDOT Approval under Programmatic Agreement

FHWA Florida Division Approval

DIRC Coordination

How to Approach Interchange Design Changes

Inform the DIRC as soon as know

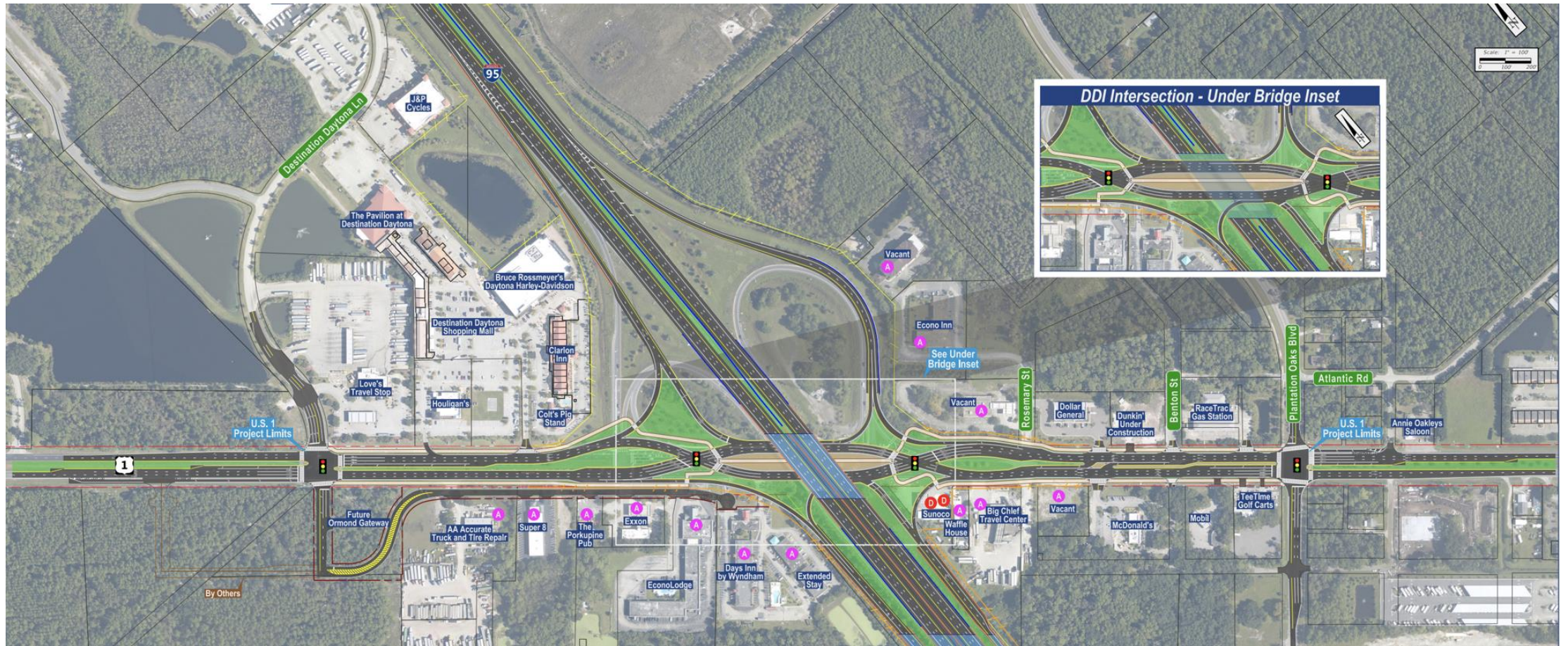
Include approval in the schedule

Have a plan to complete the traffic analysis

Coordinate with DIRC throughout

Have a strategy for additional changes

Environmental Matters



Questions?



District 5's DIRC:
Melissa Winsett
melissa.winsett@dot.state.fl.us



Program Management Updates



Kathy Alexander-Corbin
Program Management
Administrator

Tentative Work Program (TWP) Development

Fiscal Years (FYs) 2027 - 2031



Tentative Work Program (TWP)

Three stages:

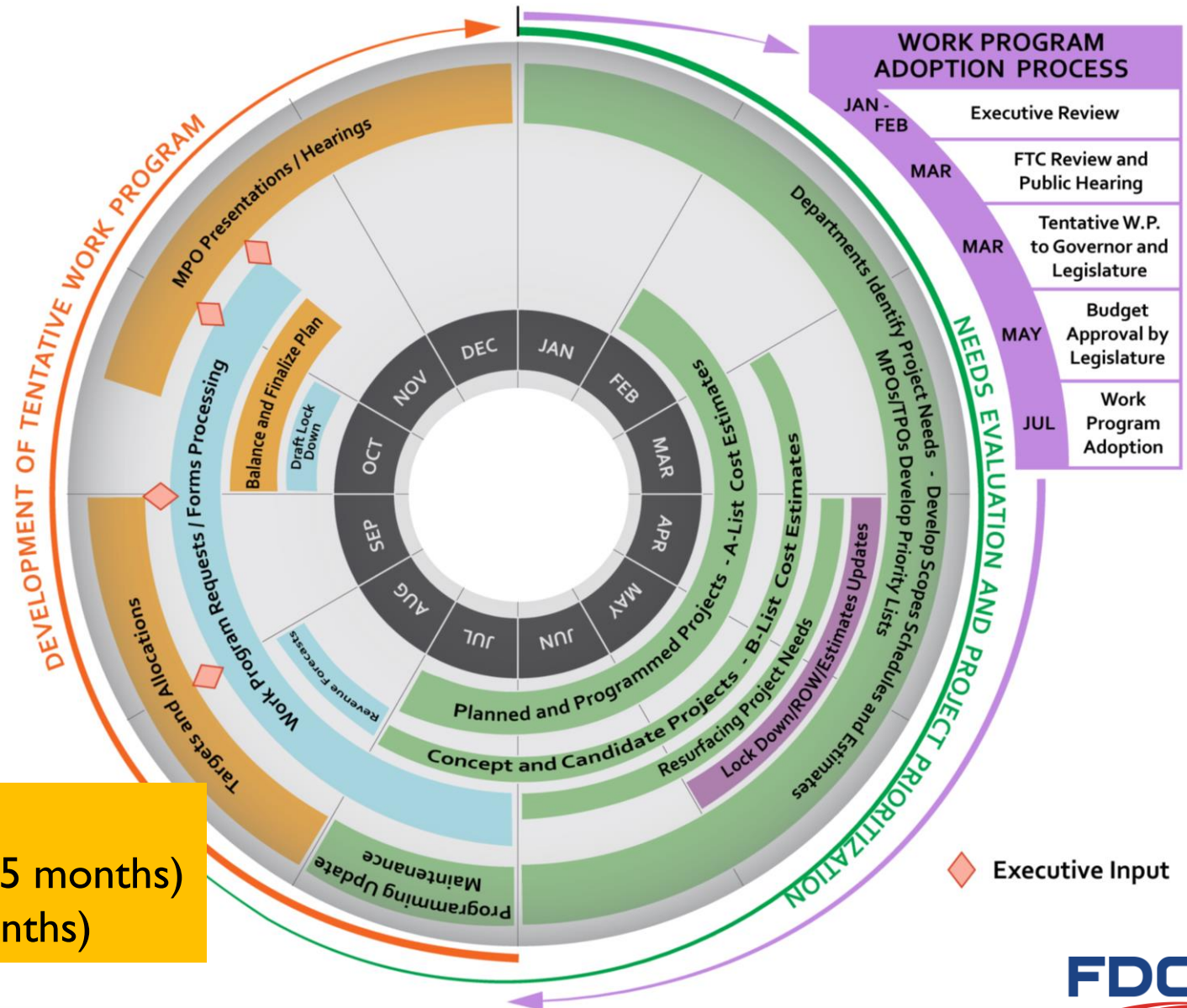
Needs Evaluation and
Prioritization

Development of
Tentative Work
Program

Work Program
Adoption

18-month Process

How long to develop:
Odd years: compressed cycle (~3.5 months)
Even years: standard cycle (~5 months)



5-Year Work Program: Adopted vs. Tentative

ADOPTED WORK PROGRAM (as of July 1st, 2025)



LOCKDOWN

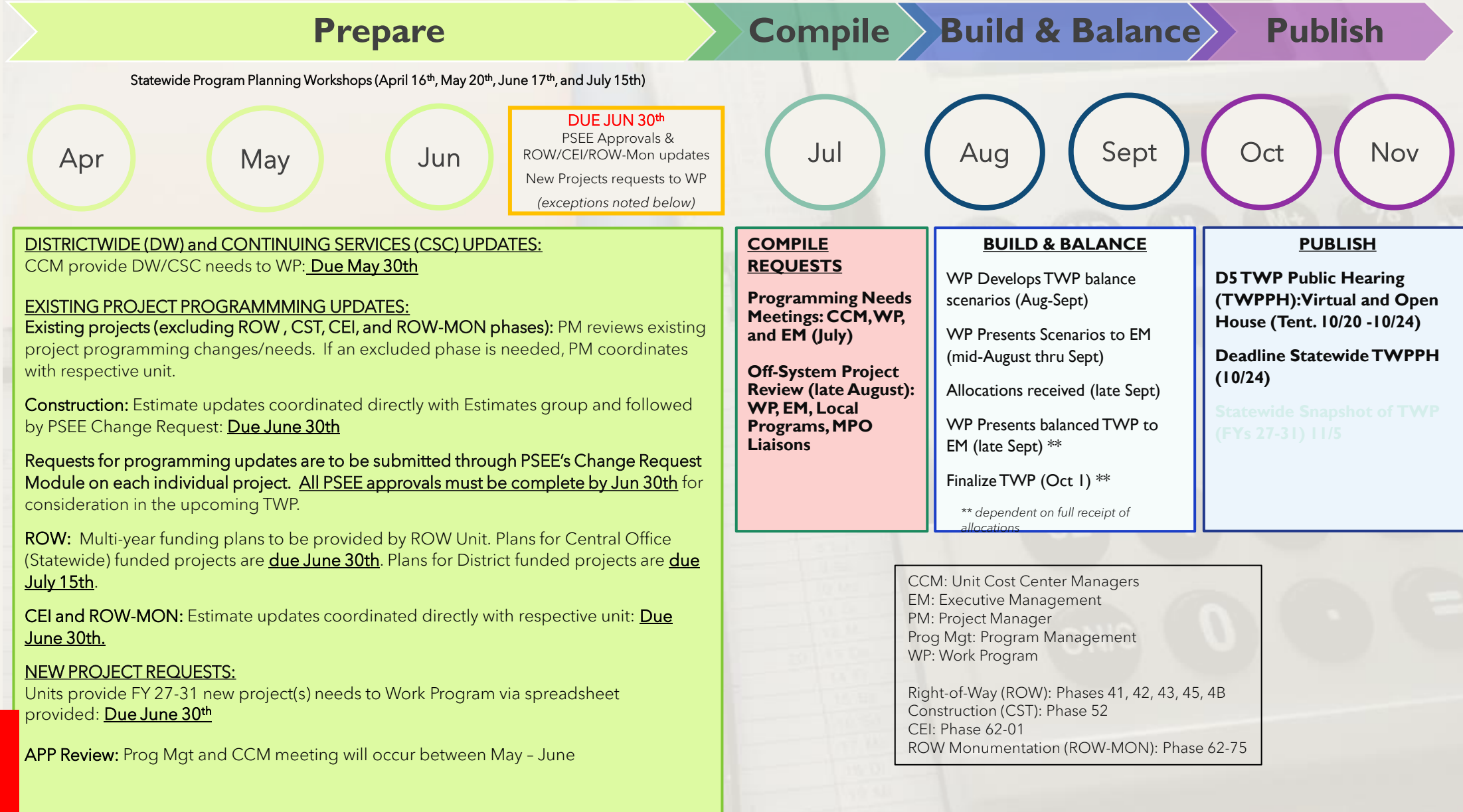
5-Year Work Program: Adopted vs. Tentative

TENTATIVE WORK PROGRAM



UPCOMING LOCKDOWN: CHANGES AFTER TWP CLOSING MAY REQUIRE WORK PROGRAM AMENDMENTS, IMPACT UPCOMING CONTINGENCY, AFFECT FUTURE PROGRAM / PERFORMANCE REQUIREMENTS.

Tentative Work Program 2027-2031 - D5 2025 Activities



Remember This:

1 **THOROUGH REVIEW OF PROJECT SCHEDULE AND NEEDS:**

Ensure accuracy of project information, phases/year, and corresponding \$\$ needs are represented properly.

2 **COORDINATE REQUESTS**

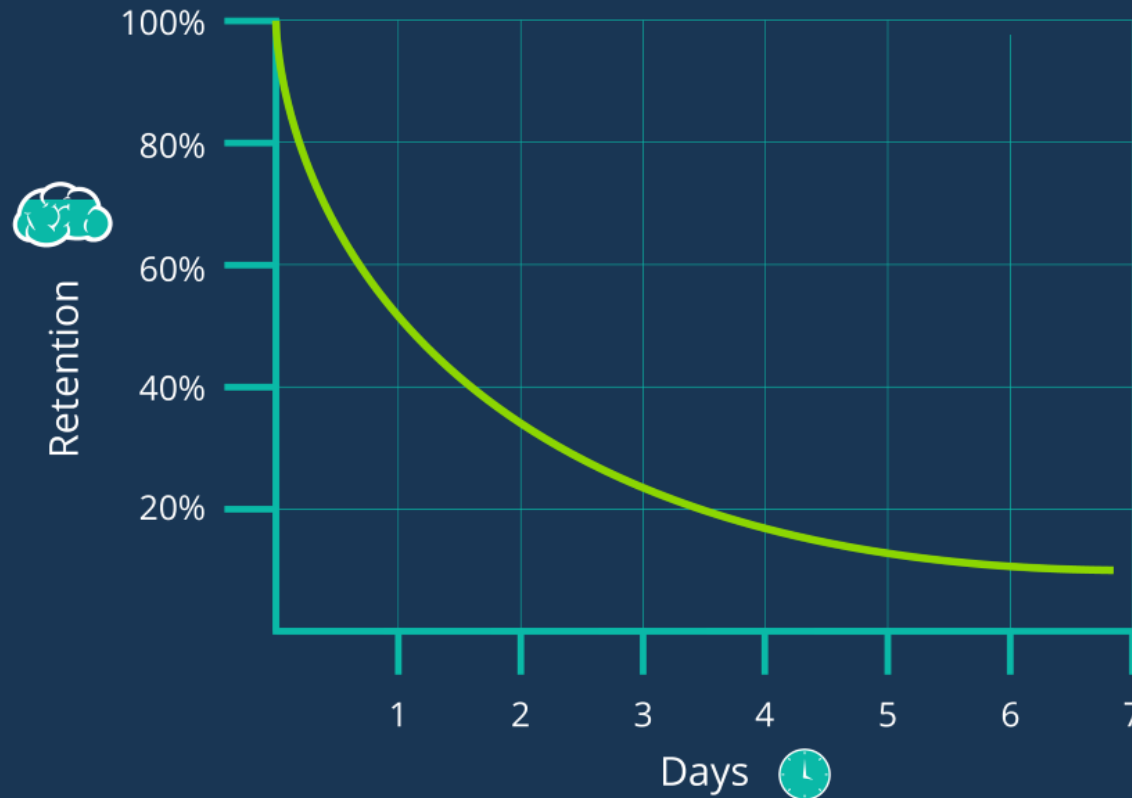
ASAP: for any updates (changes or additions) needed within FYs 27-31; INFORM PM OF POTENTIAL NEEDS; IE, LOCAL FUNDS (LF)!!

3 **FIRST YEAR OF TWP (FY 27) IS CRITICAL!**

This is our upcoming lockdown / performance plan that we will be measured against once adopted next July. Often overlooked needs are post design services, ROW Monumentation, Local Funding Agreements

Requests not programmed during tentative development *impact upcoming District contingency and performance; change could trigger administrative WP Amendments* (to Governor's Office or Legislative Budget Committee LBC) when added during lockdown.

THE FORGETTING CURVE



"Setting the Stage" for Next Work Program Cycle



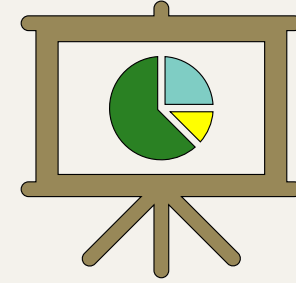
FY 2025 YEAR END SUMMARY

Performance Results

Department Performance Measures	Target	D1	D2	D3	D4	D5	D6	D7	TP	CO	Total FY 2025	Total FY 2024
Consultant Acquisition - % Plan by Number	95%-105%	91.7%	96.7%	97.9%	99.4%	85.0%	98.3%	89.9%	97.3%	-	94.0%	93.3%
Consultant Acquisition - % Plan by Dollar	95%-105%	98.2%	77.0%	85.2%	100.2%	83.0%	99.0%	100.0%	77.7%	-	87.7%	89.5%
Contract Letting - % Plan by Number	95%-105%	98.3%	88.5%	98.7%	100.0%	84.7%	100.0%	91.5%	96.9%	87.5%	94.5%	92.6%
Contract Letting - % Plan by Dollar	95%-105%	95.7%	78.4%	77.4%	101.9%	75.2%	93.5%	73.7%	69.5%	101.5%	78.3%	98.4%

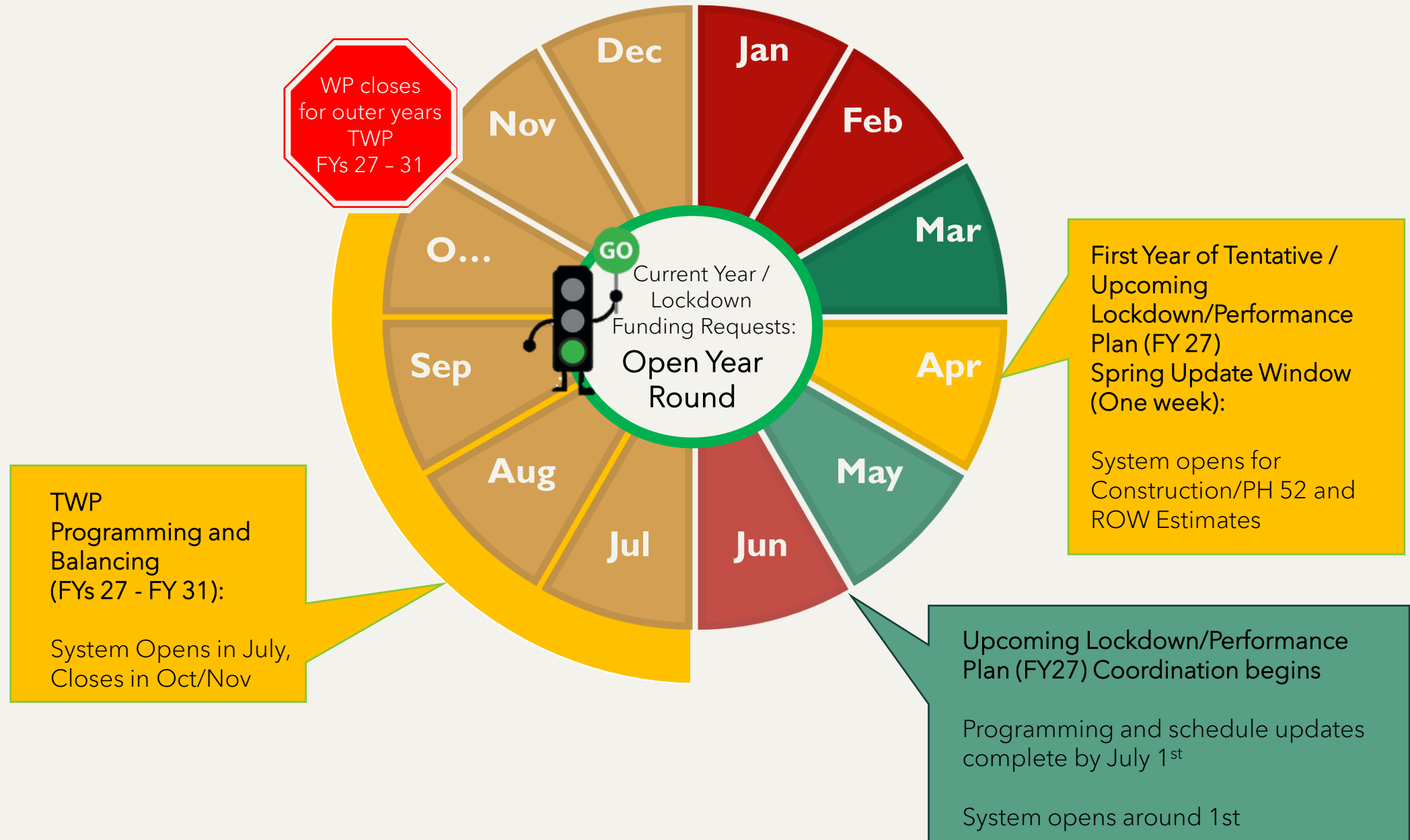
Measures Within the FDOT Target Ranges

D5 PROCESS PRIORITIES



- Balanced Work Program
 - Completed by October for FYs 27-31
 - Submit all projects and funding requests
 - Accurate estimates and quantities
 - Focus on use and value for each dollar
- Minimize Deferrals

To Close ... Annual Programming Activities ...



Questions?





United States Army Corps of Engineers Environmental Permitting Update

Nicole Belian
Environmental Permits Coordinator





- In the near future, the USACE will no longer accept electronic permit applications via email. Permit applications will need to be submitted using the new Regulatory Request System (RRS), located at <https://rrs.usace.army.mil/rrs>
- Assistance can be found at <https://rrs.usace.army.mil/rrs/help>

Questions?





Survey & Mapping Update

Marika Tremblay

Questions?



CFLSmartRoads.com

ITS Design Resources

Tushar Patel
Interim TSM&O Program Engineer



Traffic Operations Contacts

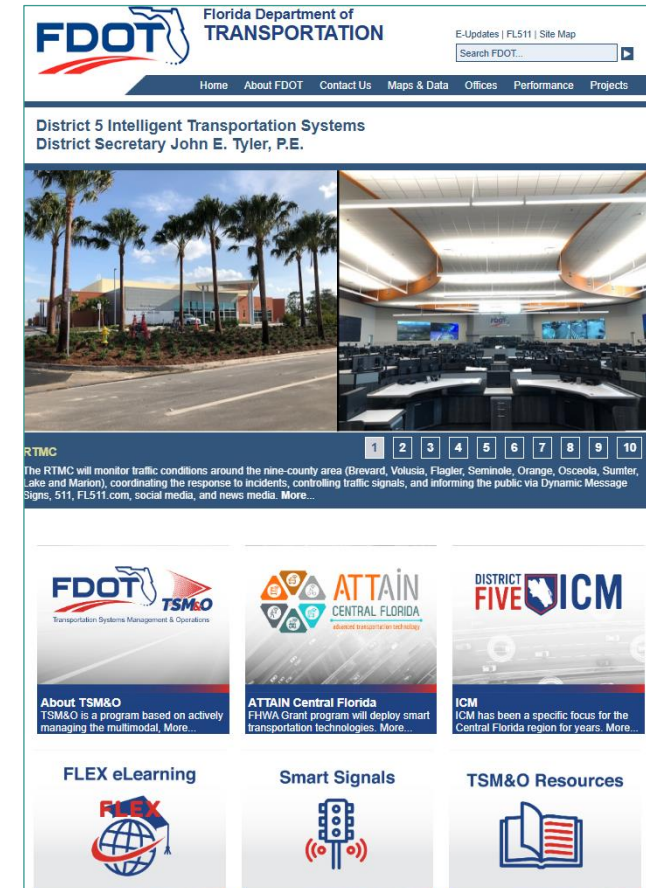


- District Traffic Operations Engineer (DTOE) – Jay Williams
- Interim TSM&O Program Engineer – Tushar Patel
- TSM&O Engineer (Arterials) – Tricia Ballard
- TSM&O Pushbutton – Kevin Marquez
- **TSM&O Planning Project Manager – Katie King**
- **TSM&O Design Project Manager – Daniel Simpson**
- TSM&O Construction Project Manager – Jennifer Sardonini
- TSM&O Maintenance Project Manager – Lorena Cucek
- TSM&O RTMC Manager – Lauren Pearson



CFLSmartRoads – Traffic Operations Resources

Storehouse of District Five Traffic Operations Resources:

- Systems Engineering Materials
- ITS/TSM&O Master Plans in Central Florida
- ITS Design Materials
- Smart Signal Guidance
- ITS Tools and Data
- Procurement Materials
- Training
- Integrated Corridor Management – Operations Resources



CFLSmartRoads – Design Resources

Design & Plans Production	
	<ul style="list-style-type: none">◦ ITS Enclosure Labeling Convention◦ D5 Mile Markers◦ ITS Scoping Considerations◦ Design Review Checklist◦ ITS Certification Form◦ TSP / MSP / Project Plan Examples◦ Example Project Plans and Details◦ Wrong Way Driving◦ PTMS / MVDS◦ Connected Vehicle
Network Integration & Maintenance	
	<ul style="list-style-type: none">◦ Installation & Deployment Guide Template◦ Upgrading Bosch AutoDome Camera Firmware to NTCIP◦ Field Device Resources◦ SOPs for CCTV Cameras◦ Sunguide Device Information (.xlsx)◦ Signal Information Collection Form (.xlsx)◦ KML File - Conduit Access Points◦ KML File - Conduit Duct Bank and Fiber Optic Cable

Design & Plans Production

- ITS Scoping Reference Document
- Technical Special Provision / Modified Special Provision samples
- Example Project Plans and Details
- ITS Plans Review Checklist

CFLSmartRoads – Design Resources

Design & Plans Production Resources

- I-75 FRAME
 - TSP 612 - ITS/ATMS Device Integration and Testing - 440900-2-52-01
 - TSP 612 - ITS Device Integration and Testing - 441616-152-01
 - TSP 690 - Connected Vehicle Equipment
 - MSP 611 - As-Built
 - MSP 670 - Controller Software Key
 - MSP 671 - Controller Software Key
 - MSP 685 - PDU
- Connected Vehicle Roadside Unit
 - 436325-2-52-01 TSP 681
- I - 75 US 27 to Alachua County Line
 - 428213-2-52-02 TSP 612



ITS Checklist

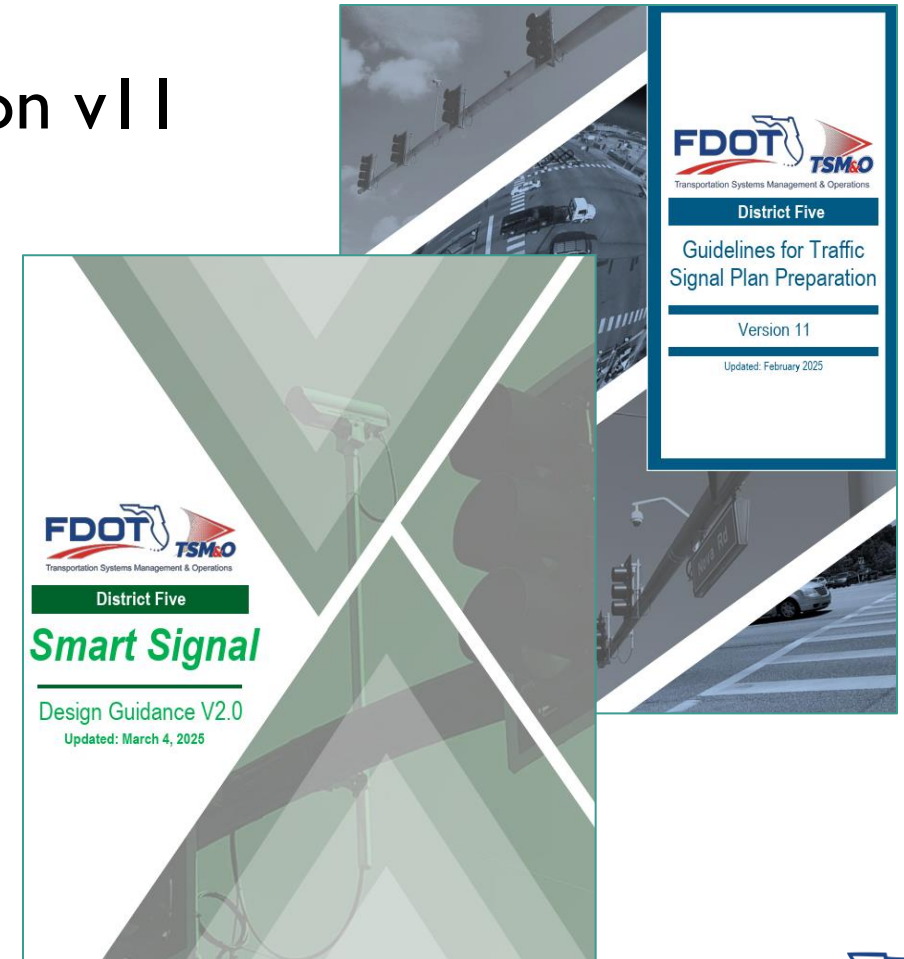
Check	Description
1. Contract Management Documents	
<input type="checkbox"/>	Read RFP (if applicable) and Addendums as well as Conceptual Plans
<input type="checkbox"/>	Review latest version of the Standards Specifications
<input type="checkbox"/>	Review latest version of the FDOT Design Manual
2. Is the ITS a component set?	
<input type="checkbox"/>	Yes, continue <input type="checkbox"/> No, go to section 3
<input type="checkbox"/>	Review Roadway plan sheets for concurrency. (Structures, Drainage, Alignment, etc.)
<input type="checkbox"/>	Review Roadway cross sections for conflicts with ITS devices, pull boxes and conduit line.
<input type="checkbox"/>	Review Drainage cross sections for conflicts – Ensure that pull boxes/poles are not proposed on bottom of ditches or swales.
<input type="checkbox"/>	Review Signing and Pavement Plans – If DMS signs are being proposed, ensure minimum distance of 800FT is maintained to guide signs.
<input type="checkbox"/>	Review Lighting Plans –Ensure no conflicts with light poles or lighting conduit.
<input type="checkbox"/>	Review Landscape Plans –Ensure that the trees do not conflict with CCTV view and tree lines (roots) are not in conflict with conduit run.
<input type="checkbox"/>	Review MOT Plans –ensure MOT or temporary asphalt is not in conflict with existing or proposed pull box or ITS poles. If there is a lane shift, then MVDS will need to be adjusted as well.
<input type="checkbox"/>	Review Signalization Plans –ensure conduit run and ITS devices are not in conflict with signalization.
<input type="checkbox"/>	Review Utility Adjustment Plans – Ensure existing communications are not impacted by moving utility poles.
3. Is there existing ITS? (Existing ITS needs to be maintained during construction.)	
<input type="checkbox"/>	Yes, continue <input type="checkbox"/> No, go to section 4
<input type="checkbox"/>	Verify existing ITS features in the field match as-builts (pull boxes, poles, etc.).
<input type="checkbox"/>	Allowable downtime is defined in specification. Verify that what is proposed is constructable within downtime requirements.

CFLSmartRoads – Design Resources

Guidelines for Traffic Signal Plan Preparation v11

Smart Signal Design Guidance

- Design Guidance v2.0 (March 2025)
- Local Maintaining Agency Preference Document



CFLSmartRoads – Tools and Data

The screenshot displays the CFLSmartRoads website interface. At the top is the Florida Department of Transportation (FDOT) logo and navigation links. The main header identifies the site as 'District 5 Smart Roads Tools and Data' and lists the District Secretary. A left sidebar contains a menu with links to various tools and resources. The main content area is titled 'Tools and Data' and features several tool tiles: NOEMI (Network Operations and Maintenance Information System), Google earth, SIIA (Signalized Intersection Inventory Application), and Active Construction Projects. Each tile includes a brief description of the tool's function.

FDOT Florida Department of TRANSPORTATION

E-Updates | FL511 | Site Map

Search FDOT...

Home About FDOT Contact Us Maps & Data Offices Performance Projects

District 5 Smart Roads
Tools and Data

District Secretary John E. Tyler, P.E.

CFL SmartRoads Home

Tools and Data

RTMC

Traffic Incident Mgmt

CV / AV +

Tools and Data +

Operations Reports

TSM&O Resources +

About TSM&O

Request Access

ATTAIN Central Florida

ICM +

Success Stories

NOEMI

NOEMI provides a snapshot of the current status of the signal system. It compares the existing system to the needs that FDOT has identified for CAV readiness as well as improved short-term operational capacity. The application also overlays the existing Routes of Significance and Priority Corridors. Routes of Significance are tied to FHWA Realtime System Management Information System, or RTSMIS. Priority Corridors represents the corridors of focus for Florida's Statewide Arterial Management Program, or STAMP. The system follows the business rules displayed in its interface to translate data collected and maintained by the Signalized Intersection Inventory Application, or SIIA, into the conclusions shown on the site.

Google earth

District 5 KML Files:

- KML File - Conduit Access Points
- KML File - Conduit Duct Bank and Fiber Optic Cable

SIIA

Signalized Intersection Inventory Application (SIIA)

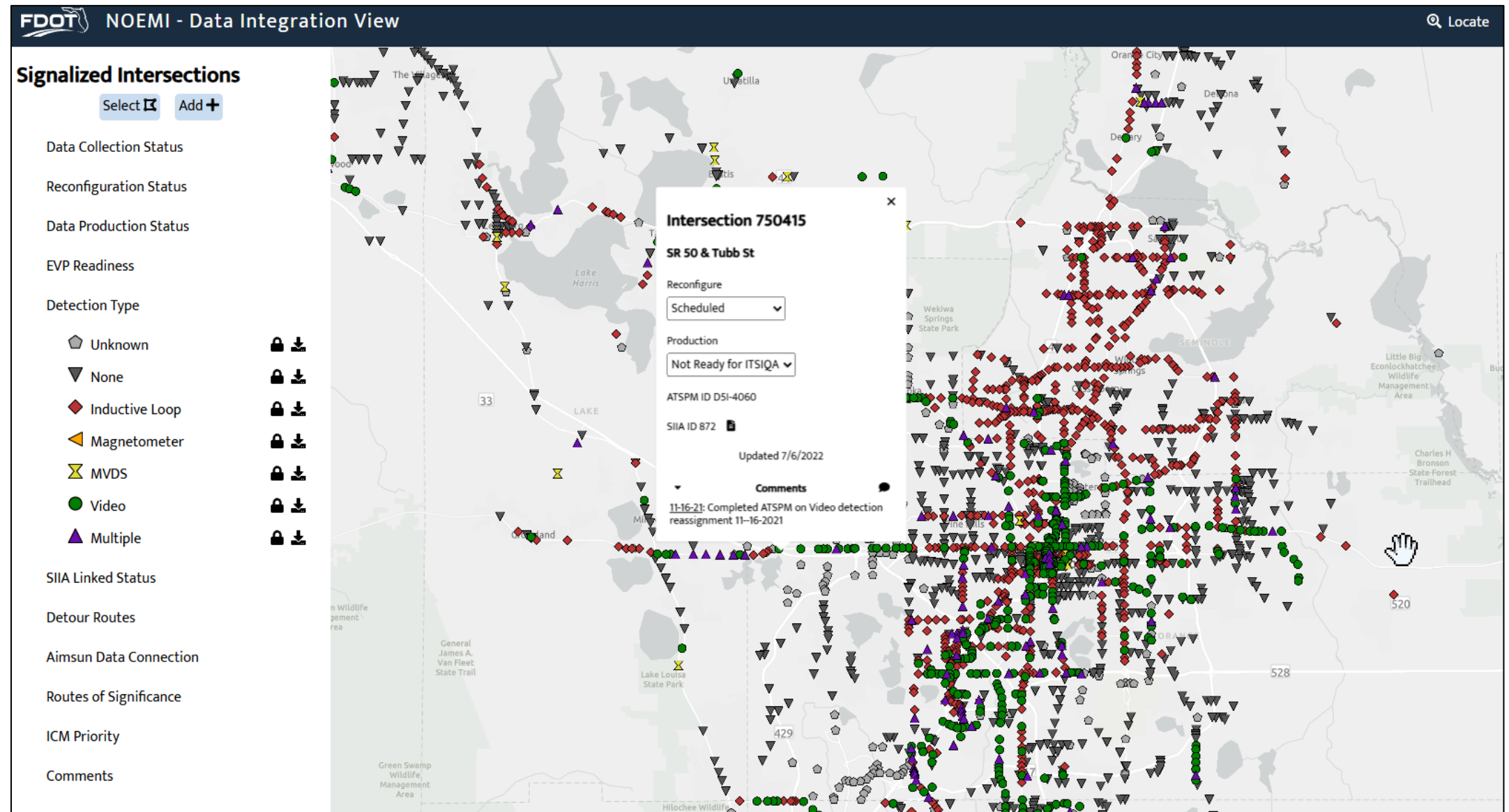
SIIA provides construction and maintenance staff with a mechanism to create and update signalized intersections, identify intersection specific details, and create and update associated approaches and devices in user friendly web based platform. SIIA then imports this information into MIMS for maintenance and inventory tracking purposes in D5. Please note appropriate user credentials are needed to access the application. New users can fill out a Security Access Request form to request an account be created here: <http://www.cflsmartroads.com/security.html>

Active Construction Projects

FDOT's Interactive map, depicting active construction projects and new corridors.

- District 5 KML
 - Conduit Access Points
 - Conduit Duct Bank and Fiber Optic Cable
- NOEMI Dashboard
- SIIA Dashboard
- District 5 SunStore

CFLSmartRoads – Tools and Data



CFLSmartRoads – Tools and Data

FDOT NOEMI - Data Integration View Locate

Signalized Intersections

Select **+** Add **+**

Data Collection Status

Reconfiguration Status

Data Production Status

EVP Readiness

Detection Type

SIIA Linked Status

Detour Routes

Aimsun Data Connection

Routes of Significance

ICM Priority

Comments

Unknown

None

Inductive Loop

Magnetometer

MVDS

Video

Multiple

Intersection 750415

SR 50 & Tubb St

Reconfigure

Scheduled

Production

Not Ready for ITSQA

ATSPM ID DSI-4060

SIIA ID 872

Updated 7/6/2022

Comments

11-16-21: Completed ATSPM on Video detection reassignment 11-16-2021

Intersection

Field	Value
ID	872
Lane Closure	null
Required For Bucket	
Owner	undefined
Intersection Type	Right Angles
Signal Type	TS
Painted	N/A
Railroad Preemption	false
Optical Preemption	true
GPS Preemption	false
Coordinated System	true
Communication Type	Fiber
Connection Type	SC
Fiber Type	Single-Mode
Leading Pedestrian Interval	false
Geosequence	99999
FDOT Signal ID	75231
Latitude	28.551061
Longitude	-81.628047
Roadway IDs	75000459, 75050000, 75A07751
Roadway Names	S 4TH ST, SR 50, S TUBB ST
County	ORANGE
District	5

Controller

Field	Value
ATMS ID	4060
ATSPM ID	DSI-4060
Operating Agency	FDOT
Maintaining Agency	Oakland
Controller Type	NEMA ATC
Firmware	2.4.0
Manufacturer	Intelligent
Model	Intelligent X3 TS2 Type 2

Cabinet

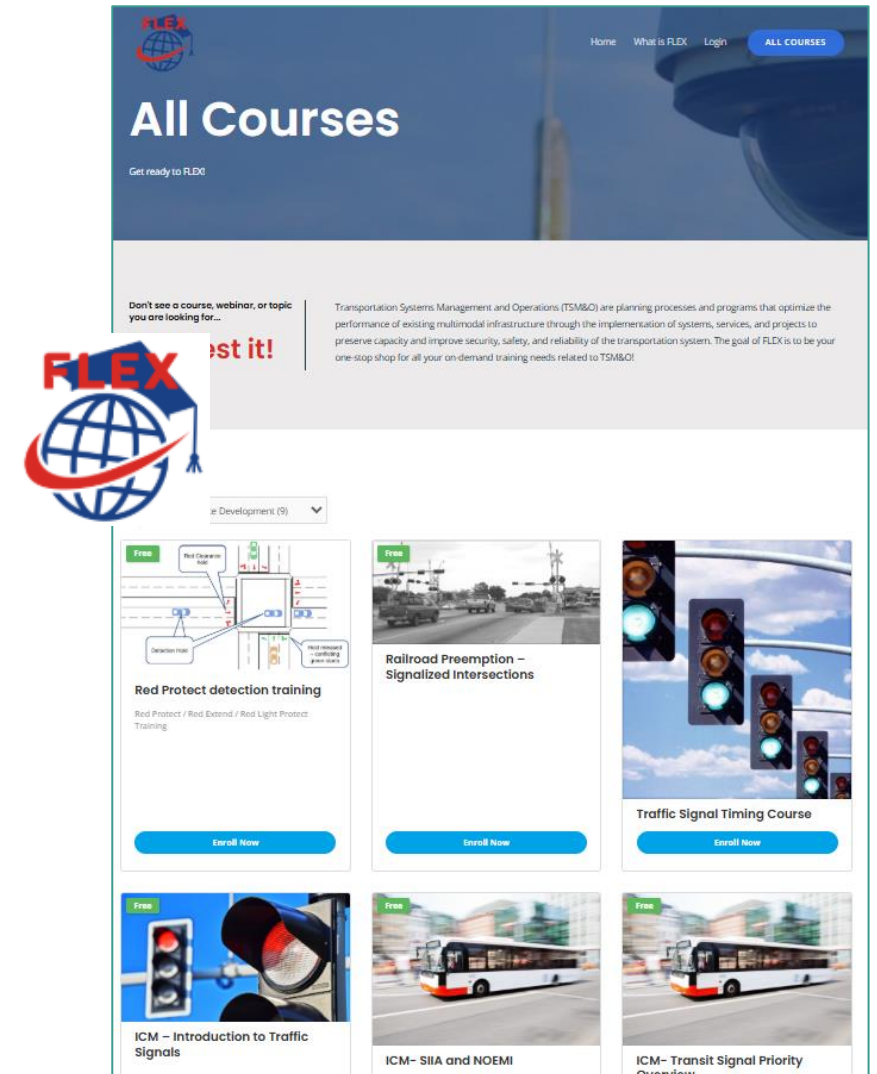
Field	Value
Cabinet Type	TS2 Type 2
Cabinet Size	Type V
Key Type	#2
Load Bays	16
Detector Card Racks	1
Generator Hookup	true
Asset ID	39939
Serial Number	102837n

Status

CFLSmartRoads – Training Resource

TSM&O FLEX Portal

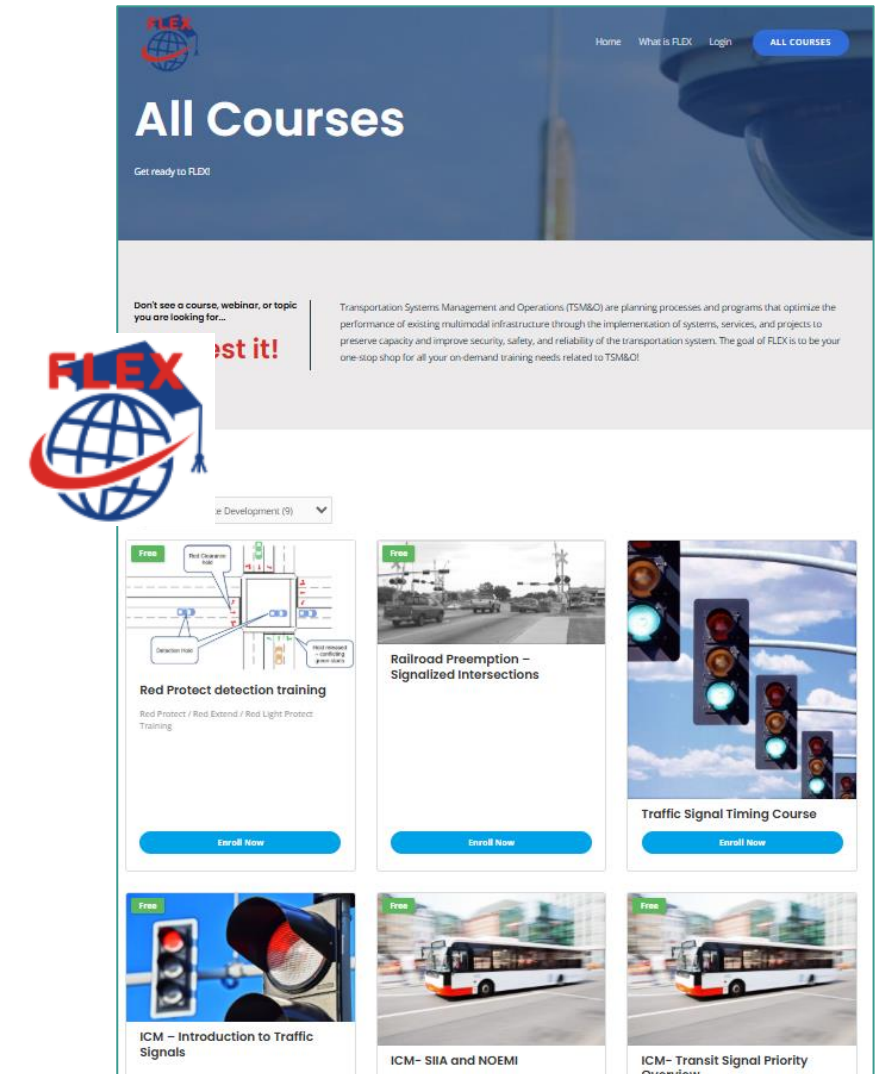
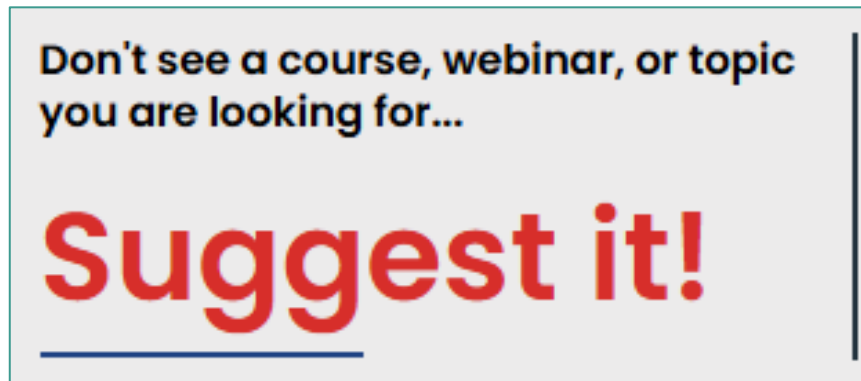
- On-demand eLearning platform with video and documentation materials
 - Traffic Signals
 - Systems Engineering
 - Network Training
 - ITS Fiber Design and Network Equipment
 - BlueTOAD Spectra probe detector and other vendor trainings
 - Other



CFLSmartRoads – Training Resource

TSM&O FLEX Portal

- On-demand eLearning platform with video and documentation materials
- Design-related trainings delivered by ITS design consultant (AtkinsRealis) will be posted to FLEX Portal shortly



ITS Design – Best Practices

EOR must ensure maintenance responsibilities for ITS equipment are clearly defined and accepted by the local agency and the Department

- Interconnected & Monitored Traffic Signal
- Intersection Beacon Control
- Pedestrian Flashing Beacon
- Emergency Fire Dept. Signal
- Speed Activated Warning Display
- Illuminated Street Name Sign
- Blankout Sign
- Traffic Warning Beacon
- Probe Data Detection System
- Uninterruptible Power Supply
- Connected and Automated Vehicle Devices
- Pedestrian Hybrid Beacon
- Arterial Dynamic Message Sign
- Passive Pedestrian Detection
- Traffic Monitoring Camera
- In-Roadway Warning Lights

Questions?





Thomas Kunzen, P.E.
District Geotechnical
Design Engineer

Geotech Update



Questions?



Thank You!

Catalina Chacon, P.E.

DCPME

Catalina.Chacon@dot.state.fl.us

Tyler Burgett

Project Manager

Tyler.Burgett@dot.state.fl.us

386-943-5388

Please let us know your topic suggestions for the next forum!