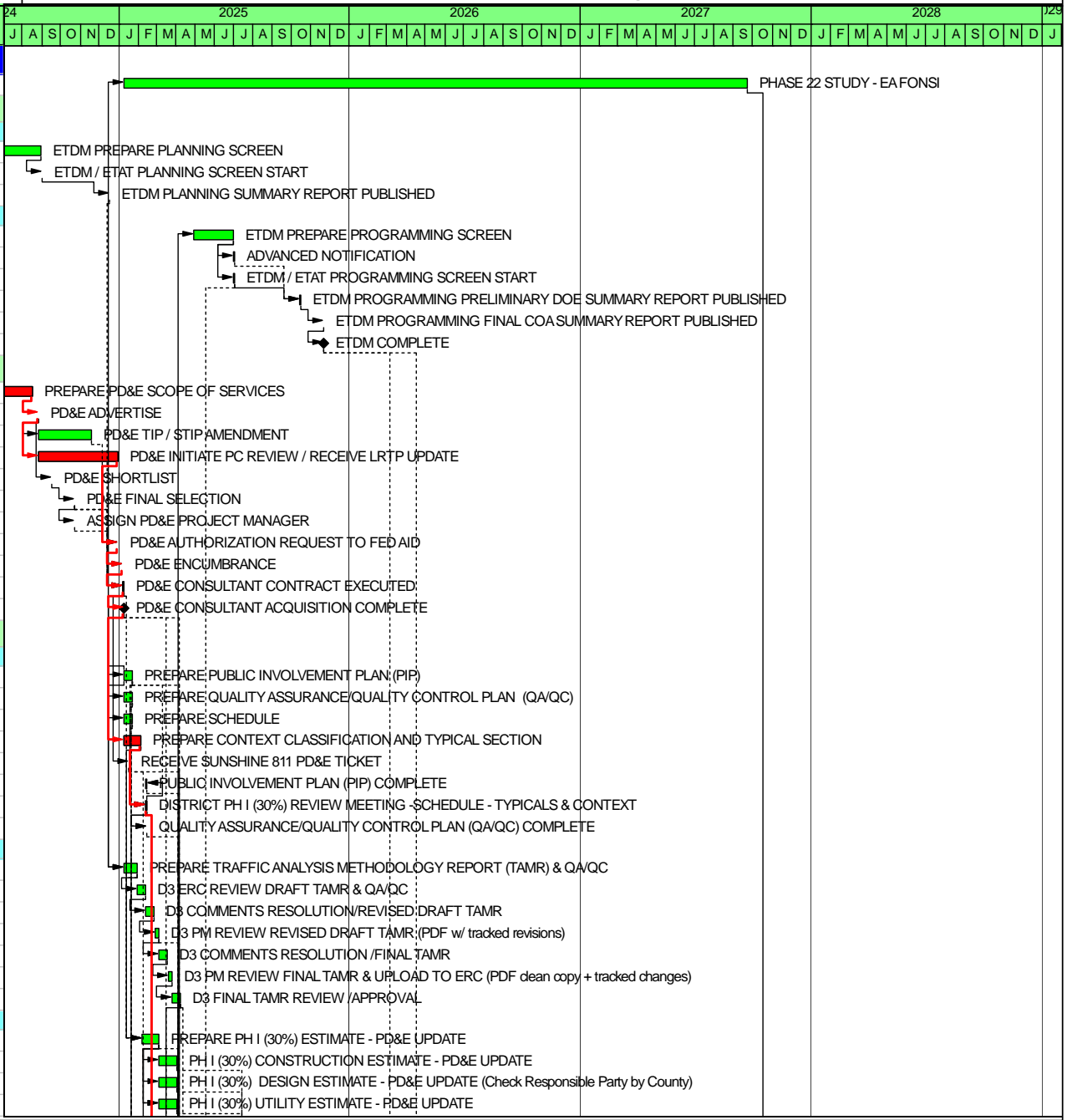


Phase 22 EA FONSI

PH 22 Gantt Chart - Template

Activity ID	Activity Name	Duration	Start	Finish	Total Float	RESPONSIBLE PART
Phase 22 EA FONSI						
135010	PHASE 22 STUDY - EA FONSI	987	01-Jul-24	31-Mar-28	0	A.IVEY
PH 22: ETDM						
PH 22: ETDM PLANNING						
9700010	ETDM PREPARE PLANNING SCREEN	45	01-Jul-24	30-Aug-24	15	W. LASHER
9700020	ETDM / ETAT PLANNING SCREEN START	1	02-Sep-24	02-Sep-24	15	W. LASHER
9700030	ETDM PLANNING SUMMARY REPORT PUBLISHED	1	17-Dec-24	17-Dec-24	15	W. LASHER
PH 22: ETDM PROGRAMMING						
9700040	ETDM PREPARE PROGRAMMING SCREEN	45	30-Apr-25	01-Jul-25	6	W. LASHER
224	ADVANCED NOTIFICATION	1	02-Jul-25	02-Jul-25	134	W. LASHER
700	ETDM / ETAT PROGRAMMING SCREEN START	1	02-Jul-25	02-Jul-25	6	W. LASHER
701	ETDM PROGRAMMING PRELIMINARY DOE SUMMARY REPORT PUBLIS	1	15-Oct-25	15-Oct-25	90	W. LASHER
702	ETDM PROGRAMMING FINAL COA SUMMARY REPORT PUBLISHED	1	21-Nov-25	21-Nov-25	90	W. LASHER
PH21PH01	ETDM COMPLETE	0		21-Nov-25	90	W. LASHER
PH 22: PD&E CONSULTANT ACQUISITION						
164022	PREPARE PD&E SCOPE OF SERVICES	35	01-Jul-24	16-Aug-24	0	SHERRY.A
705	PD&E ADVERTISE	1	26-Aug-24	26-Aug-24	0	R.DODSON
450022	PD&E TIP / STIP AMENDMENT	60	27-Aug-24	18-Nov-24	30	A.SMITH
D3R45022	PD&E INITIATE PC REVIEW / RECEIVE LRTP UPDATE	90	27-Aug-24	30-Dec-24	0	J.KIRKLAND
401022	PD&E SHORTLIST	1	17-Sep-24	17-Sep-24	11	R.DODSON
402022	PD&E FINAL SELECTION	1	22-Oct-24	22-Oct-24	11	R.DODSON
704	ASSIGN PD&E PROJECT MANAGER	1	23-Oct-24	23-Oct-24	54	SHERRY.A
237022	PD&E AUTHORIZATION REQUEST TO FED AID	1	31-Dec-24	31-Dec-24	0	T.HAGANS
299022	PD&E ENCUMBRANCE	1	07-Jan-25	07-Jan-25	0	R.DODSON
239022	PD&E CONSULTANT CONTRACT EXECUTED	1	08-Jan-25	08-Jan-25	0	R.DODSON
PH22PH00	PD&E CONSULTANT ACQUISITION COMPLETE	0		08-Jan-25	0	G.ROSBOROU
PH 22: PHASE I SUBMITTALS						
PH 22: PHASE I - DISTRICT SUBMITTALS						
359010	PREPARE PUBLIC INVOLVEMENT PLAN (PIP)	10	09-Jan-25	22-Jan-25	10	TBD
168010	PREPARE QUALITY ASSURANCE/QUALITY CONTROL PLAN (QA/QC)	10	09-Jan-25	22-Jan-25	10	TBD
168022	PREPARE SCHEDULE	10	09-Jan-25	22-Jan-25	15	TBD
9759010	PREPARE CONTEXT CLASSIFICATION AND TYPICAL SECTION	20	09-Jan-25	05-Feb-25	0	TBD
228022	RECEIVE SUNSHINE 811 PD&E TICKET	1	16-Jan-25	16-Jan-25	53	
359060	PUBLIC INVOLVEMENT PLAN (PIP) COMPLETE	1	13-Feb-25	13-Feb-25	53	TBD
D3R001	DISTRICT PH I (30%) REVIEW MEETING - SCHEDULE - TYPICALS & CON	1	13-Feb-25	13-Feb-25	0	TBD
168020	QUALITY ASSURANCE/QUALITY CONTROL PLAN (QA/QC) COMPLETE	1	14-Feb-25	14-Feb-25	52	TBD
PH 22: PHASE I - TRAFFIC ANALYSIS METHODOLOGY REPORT						
9757010	PREPARE TRAFFIC ANALYSIS METHODOLOGY REPORT (TAMR) & QA/QC	15	09-Jan-25	29-Jan-25	6	TBD
D3R75710	D3 ERC REVIEW DRAFT TAMR & QA/QC	10	30-Jan-25	12-Feb-25	6	TBD
9757014	D3 COMMENTS RESOLUTION/REVISED DRAFT TAMR	10	13-Feb-25	26-Feb-25	6	TBD
D3R75712	D3 PM REVIEW REVISED DRAFT TAMR (PDF w/ tracked revisions)	5	27-Feb-25	05-Mar-25	6	TBD
9757140	D3 COMMENTS RESOLUTION /FINAL TAMR	10	06-Mar-25	19-Mar-25	6	TBD
D3R75716	D3 PM REVIEW FINAL TAMR & UPLOAD TO ERC (PDF clean copy + tracke	5	20-Mar-25	26-Mar-25	6	TBD
D3R75717	D3 FINAL TAMR REVIEW /APPROVAL	10	27-Mar-25	09-Apr-25	6	TBD
PH 22: PHASE I - ESTIMATE						
15522030	PREPARE PH I (30%) ESTIMATE - PD&E UPDATE	20	06-Feb-25	02-Apr-25	19	TBD
29722030	PH I (30%) CONSTRUCTION ESTIMATE - PD&E UPDATE	20	06-Mar-25	02-Apr-25	19	J.STRICKLA
99822030	PH I (30%) DESIGN ESTIMATE - PD&E UPDATE (Check Responsible Party I	20	06-Mar-25	02-Apr-25	19	R.KIRKLAND
15922030	PH I (30%) UTILITY ESTIMATE - PD&E UPDATE	20	06-Mar-25	02-Apr-25	19	TBD



Data Date: 01-Jul-24
Run: 02-May-24 10:47

ALL SCHEDULES ARE PRELIMINARY AND SUBJECT TO CHANGE WITHOUT NOTICE

