


October 28-29, 2025
Orlando, FL




**TRANSPORTATION
SYMPOSIUM**

PD&E Process Roadmap

Catherine Bradley
Greg Garrett

Transportation Symposium
Website



1



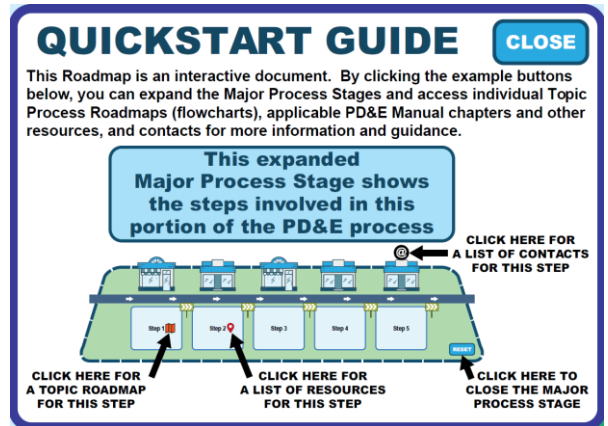
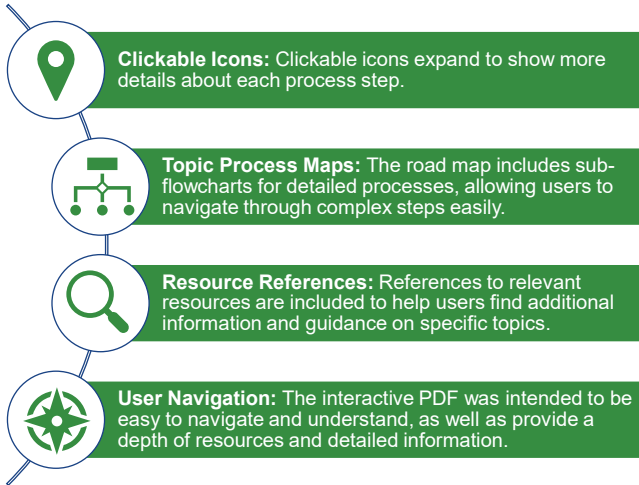
Better Late Than Never

**TRANSPORTATION
SYMPOSIUM**

2

2

Interactive Document Features



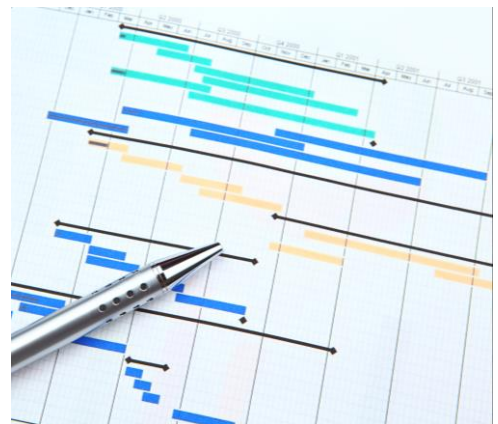
TRANSPORTATION
SYMPOSIUM

5

5

How the Roadmap was Developed

- ▮ Built from project schedules as the framework.
- ▮ Looked to identify the most common pathway for PD&E projects, while still recognizing the many unique aspects that can occur within the PD&E process.
- ▮ The roadmap provides a sense of order to the PD&E Manual and process since the Manual itself isn't published in sequential order.
- ▮ There is no "one-size-fits-all" model for durations of each step because every project is different. As such, durations were not included.

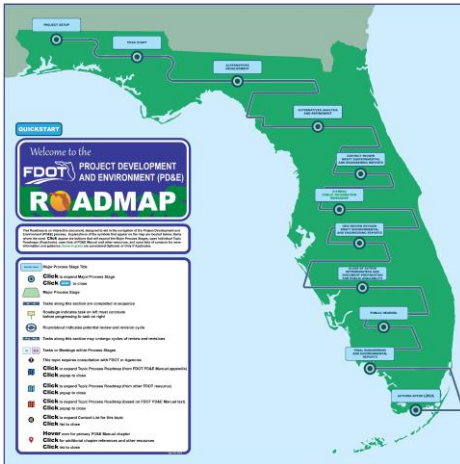


TRANSPORTATION
SYMPOSIUM

6

6

Interactive PD&E Roadmap – Overview



- 📖 The Quickstart Guide
- 📖 Disclaimer & Legend
- 📖 Roadmap Components
- 📖 PD&E Process Stages
- 📖 Demo and Q&A

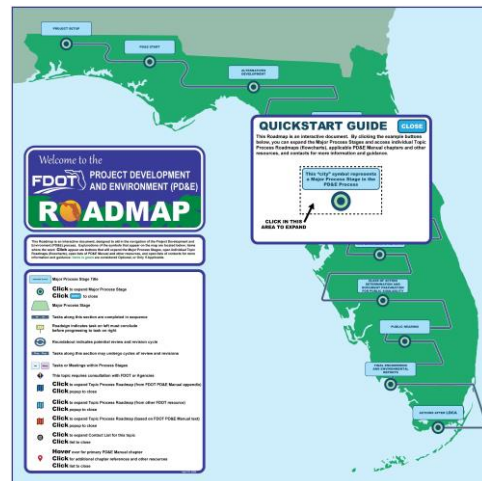
TRANSPORTATION
SYMPOSIUM

7

7

Interactive PD&E Roadmap – Quickstart Guide

- 📖 The Quickstart Guide is visible when you open the Roadmap



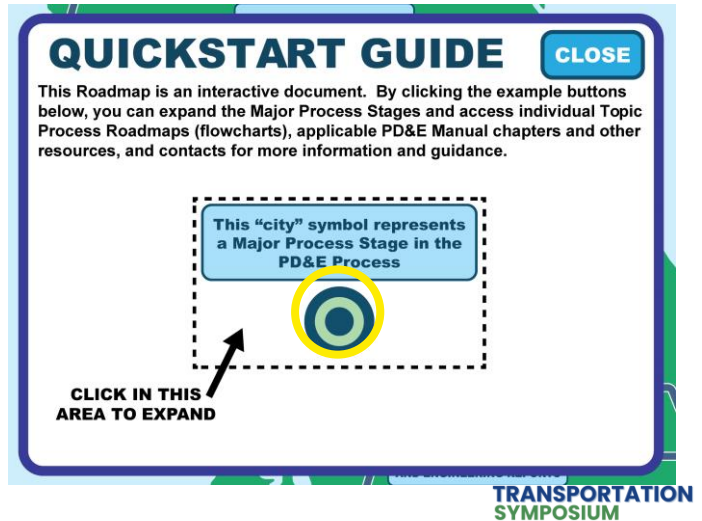
TRANSPORTATION
SYMPOSIUM

8

8

Interactive PD&E Roadmap – Quickstart Guide

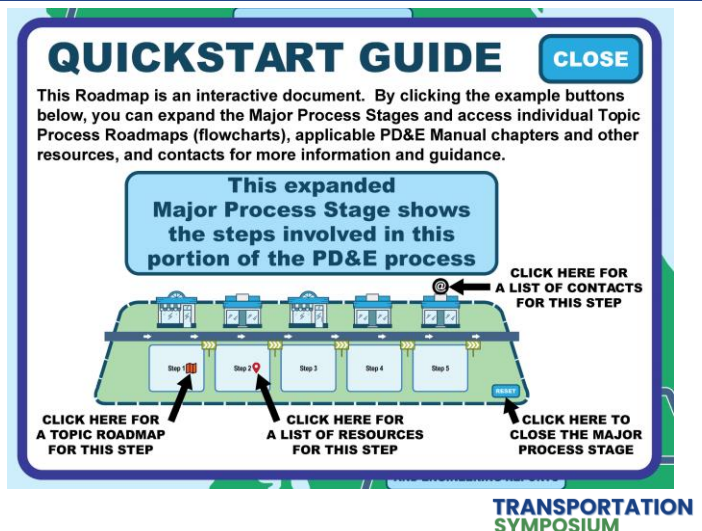
- 📖 The “city” symbol represents the Major Process Stage in the FDOT PD&E process.



9

Interactive PD&E Roadmap – Quickstart Guide

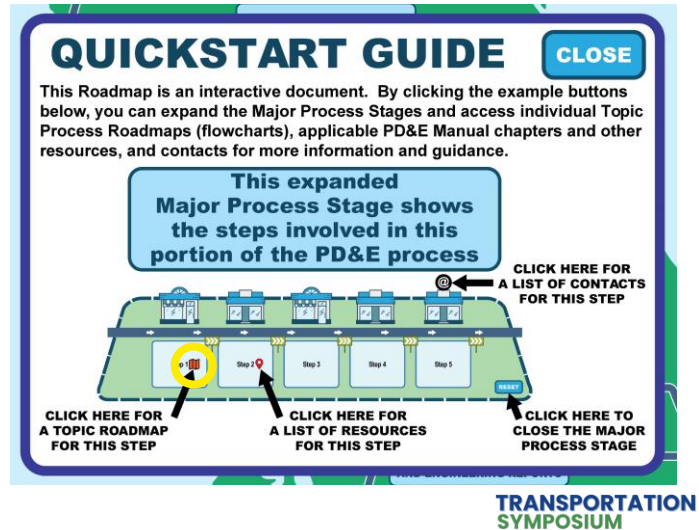
- 📖 The “city” symbol represents the Major Process Stage in the FDOT PD&E process.



10

Interactive PD&E Roadmap – Quickstart Guide

- 📅 The folded roadmap icon indicates there is a Topic Roadmap flowchart available.

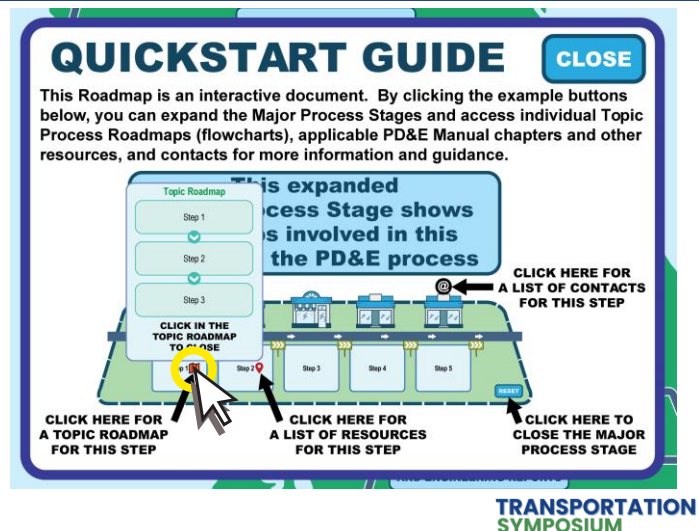


11

11

Interactive PD&E Roadmap – Quickstart Guide

- 📅 The folded roadmap icon indicates there is a Topic Roadmap flowchart available.
- 📅 Clicking on the roadmap icon expands the Topic Roadmap flowchart.

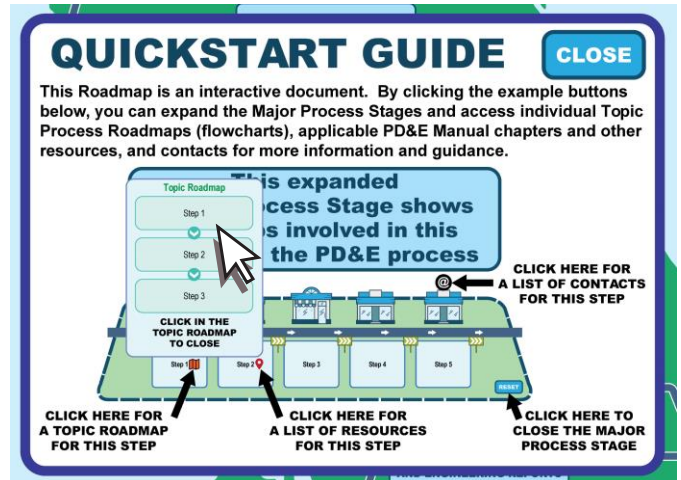


12

12

Interactive PD&E Roadmap – Quickstart Guide

- ❏ The folded roadmap icon indicates there is a Topic Roadmap flowchart available.
- ❏ Clicking on the roadmap icon expands the Topic Roadmap flowchart.
- ❏ Click anywhere on the Topic Roadmap flowchart to close.



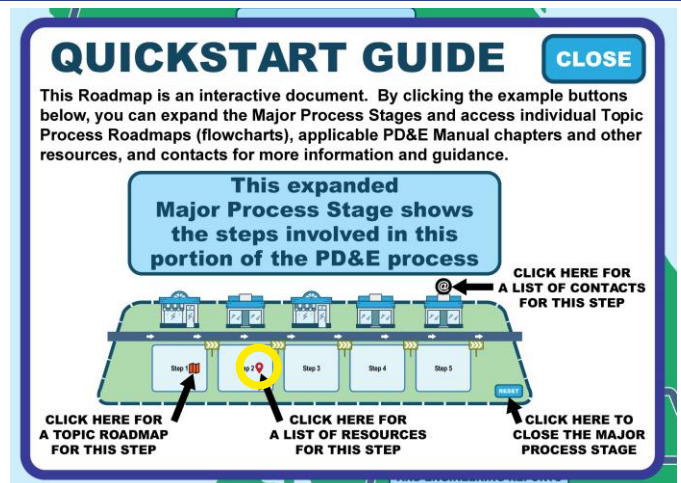
TRANSPORTATION
SYMPOSIUM

13

13

Interactive PD&E Roadmap – Quickstart Guide

- ❏ The waypoint icon indicates there is a list of resource references available.



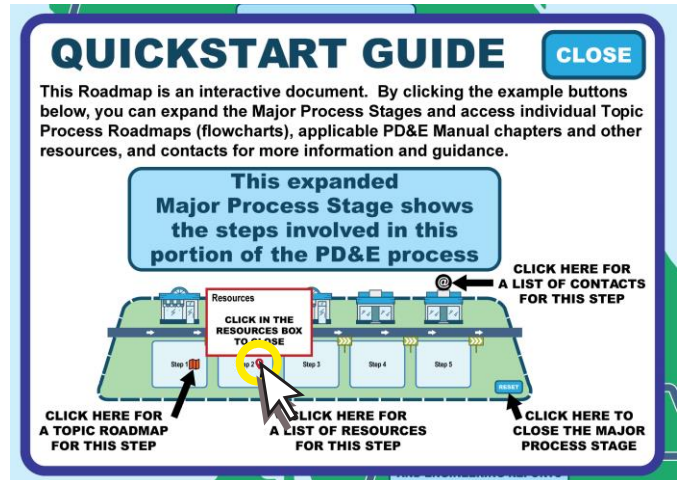
TRANSPORTATION
SYMPOSIUM

14

14

Interactive PD&E Roadmap – Quickstart Guide

- ❏ The waypoint icon indicates there is a list of resource references available.
- ❏ Click on the waypoint icon to expand the list of resources.



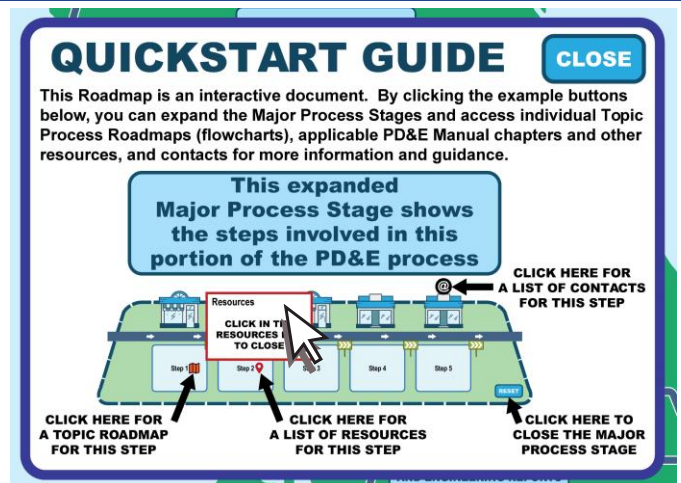
TRANSPORTATION
SYMPOSIUM

15

15

Interactive PD&E Roadmap – Quickstart Guide

- ❏ The waypoint icon indicates there is a list of resource references available.
- ❏ Click on the waypoint icon to expand the list of resources.
- ❏ Click anywhere on the resource list to close.



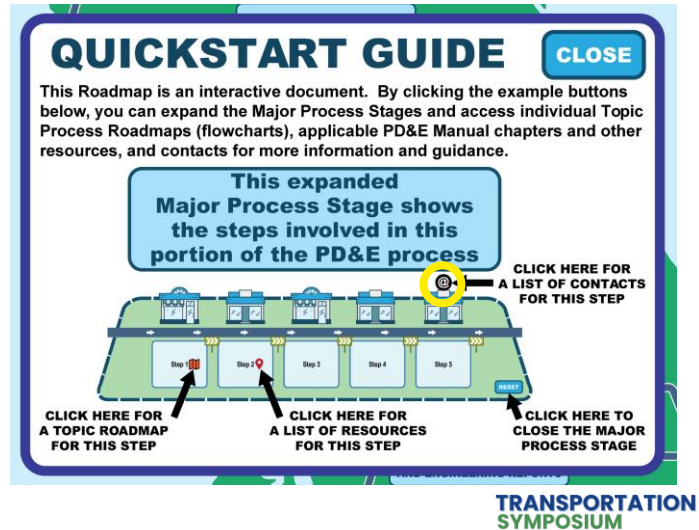
TRANSPORTATION
SYMPOSIUM

16

16

Interactive PD&E Roadmap – Quickstart Guide

- The @ icon indicates a list of FDOT contacts is available.



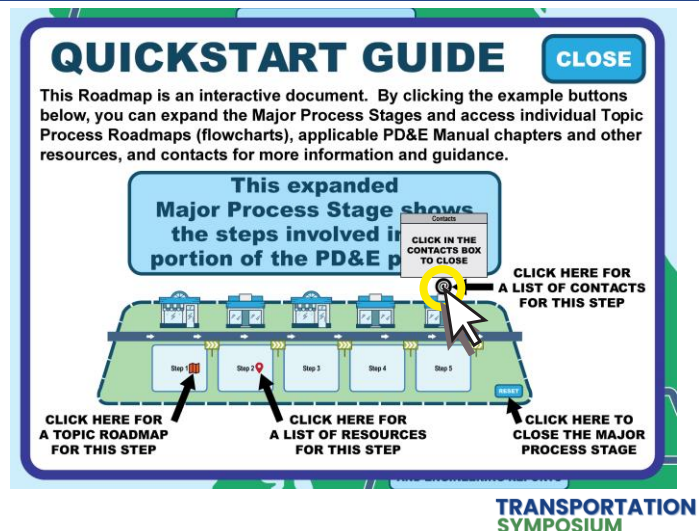
17

17

Interactive PD&E Roadmap – Quickstart Guide

- The @ icon indicates a list of FDOT contacts is available.

- Click on the @ icon to expand a list of FDOT contacts.

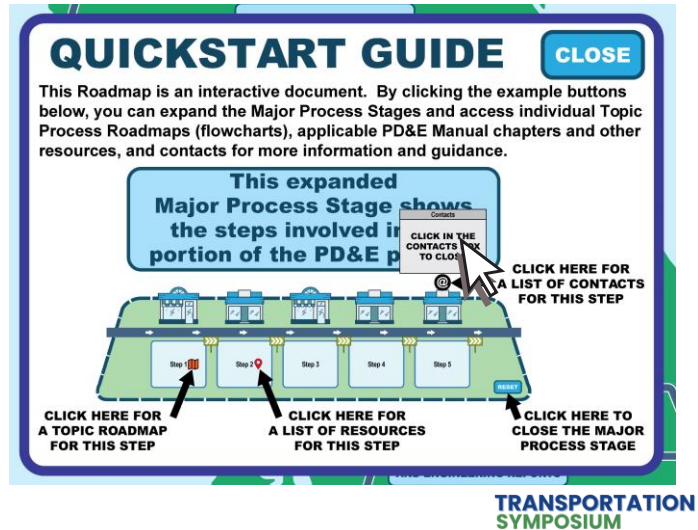


18

18

Interactive PD&E Roadmap – Quickstart Guide

- ❏ The @ icon indicates a list of FDOT contacts is available.
- ❏ Click on the @ icon to expand a list of FDOT contacts.
- ❏ Click anywhere on the contact list to close.

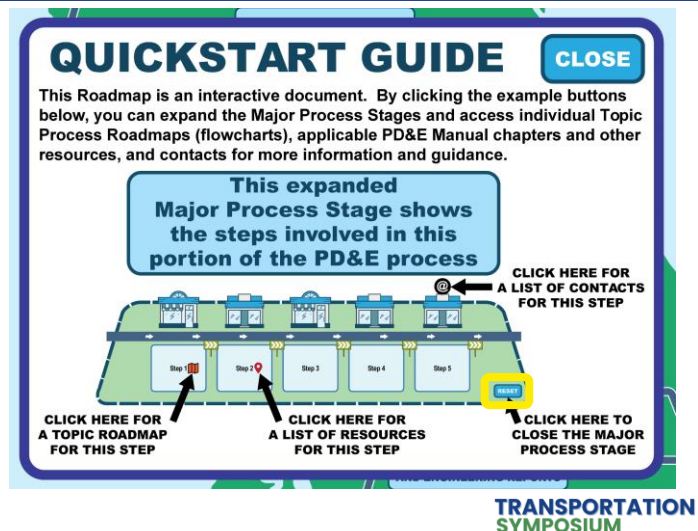


19

19

Interactive PD&E Roadmap – Quickstart Guide

- ❏ Each Major Process Stage will have a Reset button.

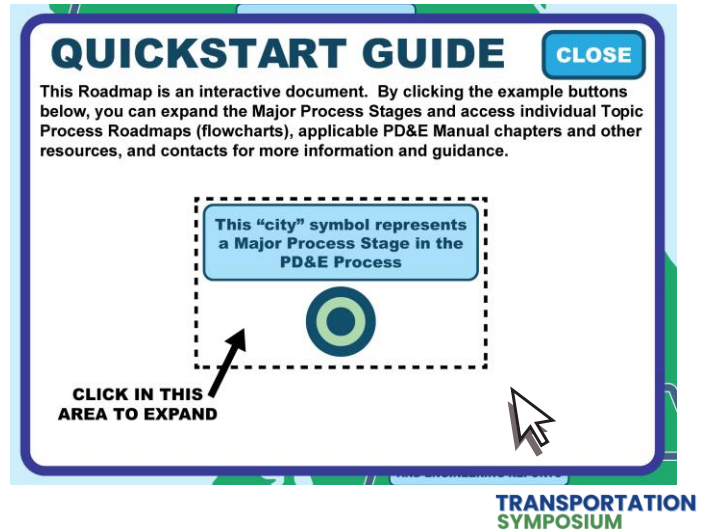


20

20

Interactive PD&E Roadmap – Quickstart Guide

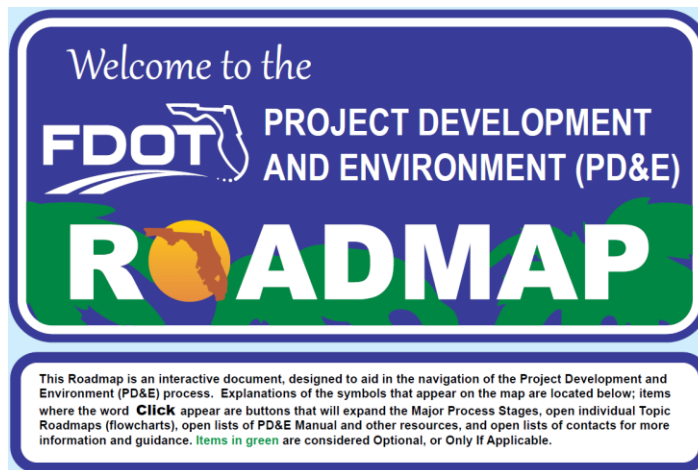
- Each Major Process Stage will have a Reset button.
- Clicking on the Reset button will return that stage to its unexpanded view.



21

21

Interactive PD&E Roadmap – Quickstart Guide



TRANSPORTATION SYMPOSIUM

22

22

Interactive PD&E Roadmap – Legend

Major Process Stage Title

Click to expand Major Process Stage

Click **close** to close

Major Process Stage

Tasks along this section are completed in sequence

Roadsign indicates task on left must conclude before progressing to task on right

Roundabout indicates potential review and revision cycle

Tasks along this section may undergo cycles of review and revisions

Tasks or Meetings within Process Stages

This topic requires consultation with FDOT or Agencies

Click to expand Topic Process Roadmap (from FDOT PD&E Manual appendix)

Click popup to close

Click to expand Topic Process Roadmap (from other FDOT resource)

Click popup to close

Click to expand Topic Process Roadmap (based on FDOT PD&E Manual text)

Click popup to close

Click to expand Contact List for this topic

Click list to close

Hover over for primary PD&E Manual chapter

Click for additional chapter references and other resources

Click list to close

23

Interactive PD&E Roadmap – Project Setup

PROJECT SETUP

PD&E START

QUICKSTART

Welcome to the
FDOT
PROJECT DEVELOPMENT
AND ENVIRONMENT (PD&E)
ROADMAP

Click to expand Major Process Stage

Click **close** to close

Major Process Stage

Tasks along this section are completed in sequence

Roadsign indicates task on left must conclude before progressing to task on right

Roundabout indicates potential review and revision cycle

Tasks along this section may undergo cycles of review and revisions

Tasks or Meetings within Process Stages

This topic requires consultation with FDOT or Agencies

Click to expand Topic Process Roadmap (from FDOT PD&E Manual appendix)

Click popup to close

Click to expand Topic Process Roadmap (from other FDOT resource)

Click popup to close

Click to expand Topic Process Roadmap (based on FDOT PD&E Manual text)

Click popup to close

Click to expand Contact List for this topic

Click list to close

Hover over for primary PD&E Manual chapter

Click for additional chapter references and other resources

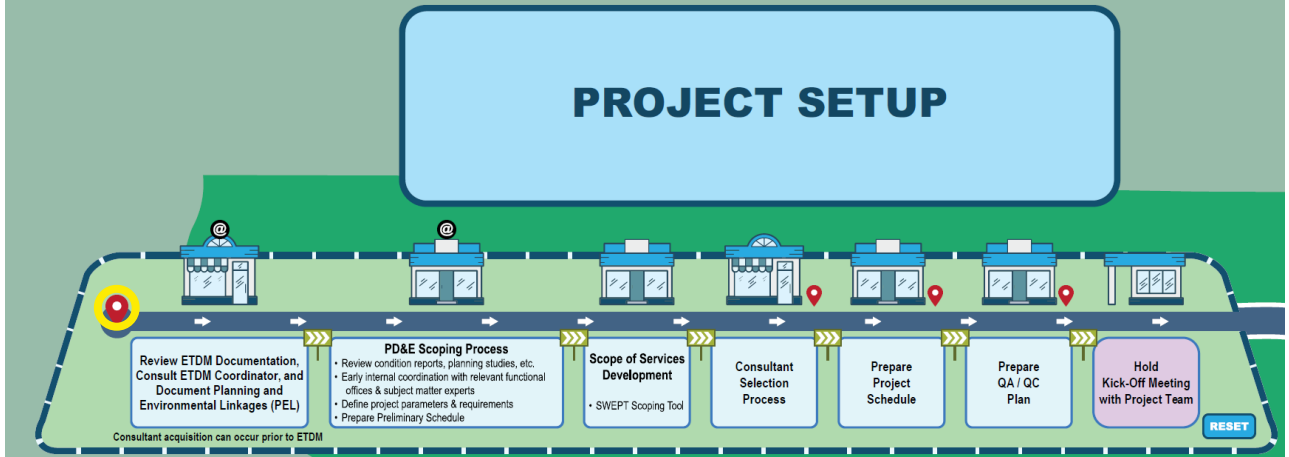
Click list to close

PROJECT SETUP

PD&E START

24

Interactive PD&E Roadmap – Project Setup

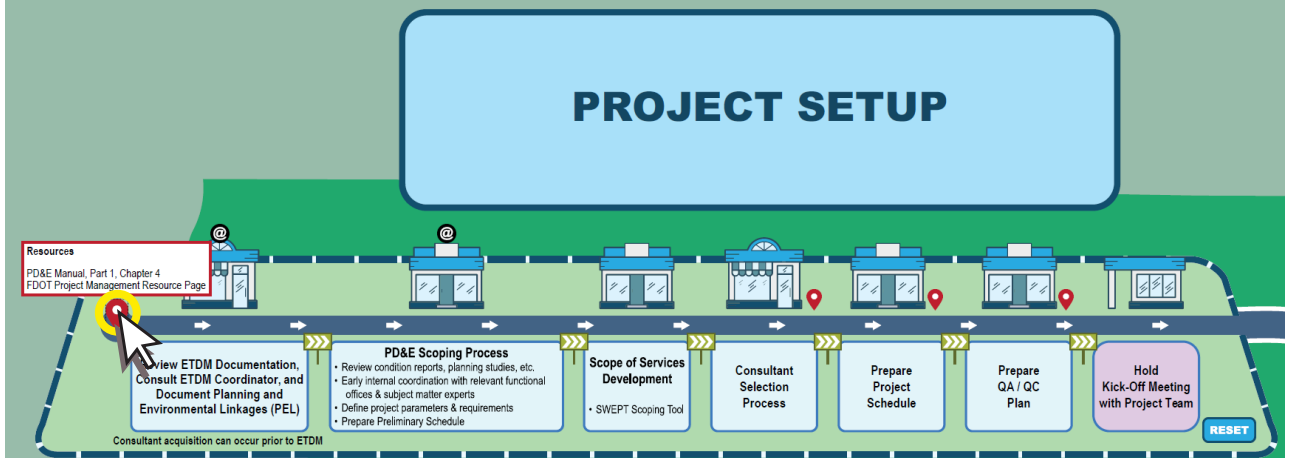


TRANSPORTATION
SYMPOSIUM

25

25

Interactive PD&E Roadmap – Project Setup

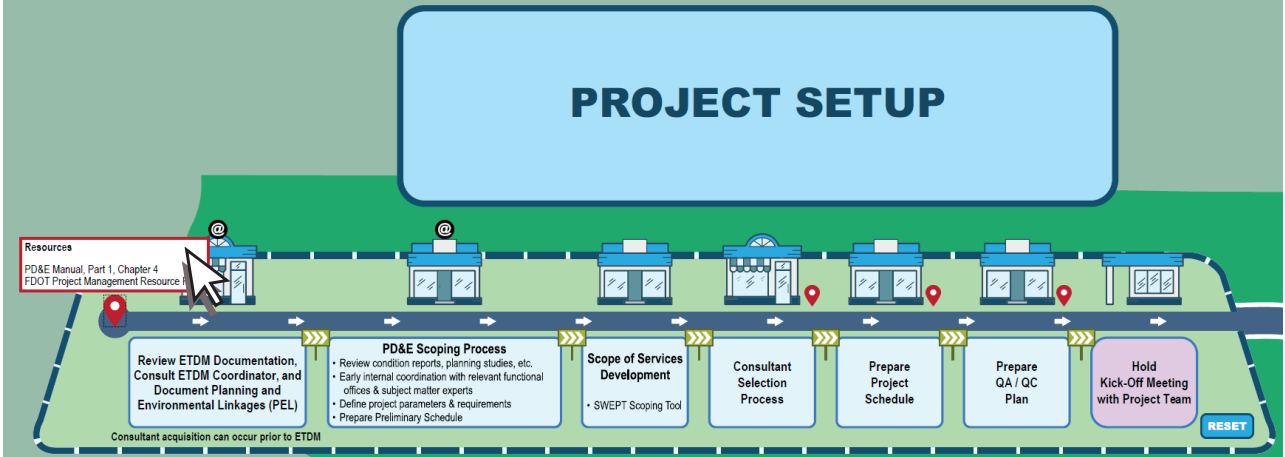


TRANSPORTATION
SYMPOSIUM

26

26

Interactive PD&E Roadmap – Project Setup

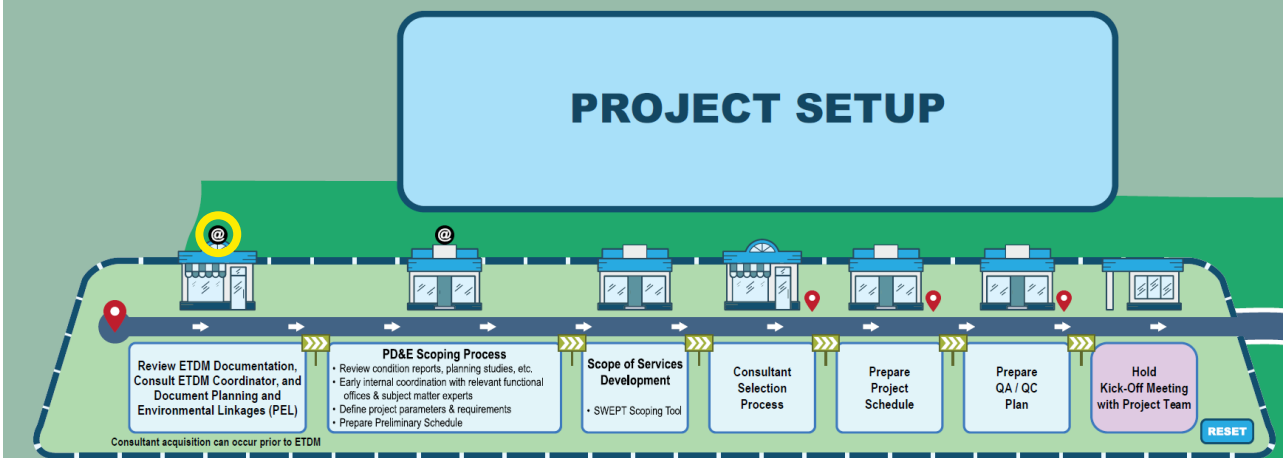


TRANSPORTATION
SYMPOSIUM

27

27

Interactive PD&E Roadmap – Project Setup



TRANSPORTATION
SYMPOSIUM

28

28

Interactive PD&E Roadmap – Project Setup

Office	ETDM
District 1	Nikki Gilmer - Nikki.Gilmer@dot.state.fl.us
District 2	Terri Newman - Terri.Newman@dot.state.fl.us Aja Stoppe - Aja.Stoppe@dot.state.fl.us
District 3	Toni White - Toni.White@dot.state.fl.us
District 4	Shandra Davis - Shandra.Davis@dot.state.fl.us
District 5	Casey Lyon - Casey.Lyon@dot.state.fl.us Letitia Neal - letitia.neal@dot.state.fl.us
District 6	Dal Huynh - Dal.Huynh@dot.state.fl.us
District 7	TBD
FTE	TBD
OEM	Johnathon Bennett - jonathon.bennett@dot.state.fl.us Avril Wood-McGrath - avril.wood-mcgrath@dot.state.fl.us

PROJECT SETUP

Review ETDM Documentation,
Consult ETDM Coordinator, and
Document Planning and
Environmental Linkages (PEL)

Consultant acquisition can occur prior to ETDM

PD&E Scoping Process

- Review condition reports, planning studies, etc.
- Early internal coordination with relevant functional offices & subject matter experts
- Define project parameters & requirements
- Prepare Preliminary Schedule

**Scope of Services
Development**

- SWEPT Scoping Tool

**Consultant
Selection
Process**

**Prepare
Project
Schedule**

**Prepare
QA / QC
Plan**

**Hold
Kick-Off Meeting
with Project Team**

RESET

TRANSPORTATION
SYMPOSIUM

29

29

Interactive PD&E Roadmap – Project Setup

Office	ETDM
District 1	Nikki Gilmer - Nikki.Gilmer@dot.state.fl.us
District 2	Terri Newman - Terri.Newman@dot.state.fl.us Aja Stoppe - Aja.Stoppe@dot.state.fl.us
District 3	Toni White - Toni.White@dot.state.fl.us
District 4	Shandra Davis - Shandra.Davis@dot.state.fl.us
District 5	Casey Lyon - Casey.Lyon@dot.state.fl.us Letitia Neal - letitia.neal@dot.state.fl.us
District 6	Dal Huynh - Dal.Huynh@dot.state.fl.us
District 7	TBD
FTE	TBD
OEM	Johnathon Bennett - jonathon.bennett@dot.state.fl.us Avril Wood-McGrath - avril.wood-mcgrath@dot.state.fl.us

PROJECT SETUP

Review ETDM Documentation,
Consult ETDM Coordinator, and
Document Planning and
Environmental Linkages (PEL)

Consultant acquisition can occur prior to ETDM

PD&E Scoping Process

- Review condition reports, planning studies, etc.
- Early internal coordination with relevant functional offices & subject matter experts
- Define project parameters & requirements
- Prepare Preliminary Schedule

**Scope of Services
Development**

- SWEPT Scoping Tool

**Consultant
Selection
Process**

**Prepare
Project
Schedule**

**Prepare
QA / QC
Plan**

**Hold
Kick-Off Meeting
with Project Team**

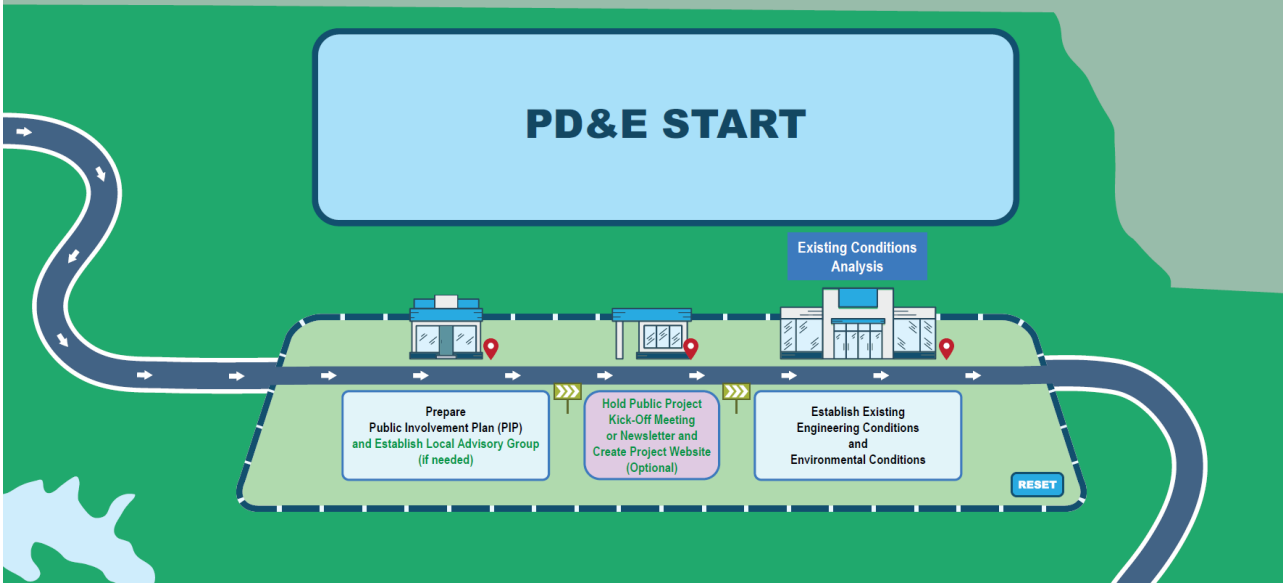
RESET

TRANSPORTATION
SYMPOSIUM

30

30

Interactive PD&E Roadmap – PD&E Start



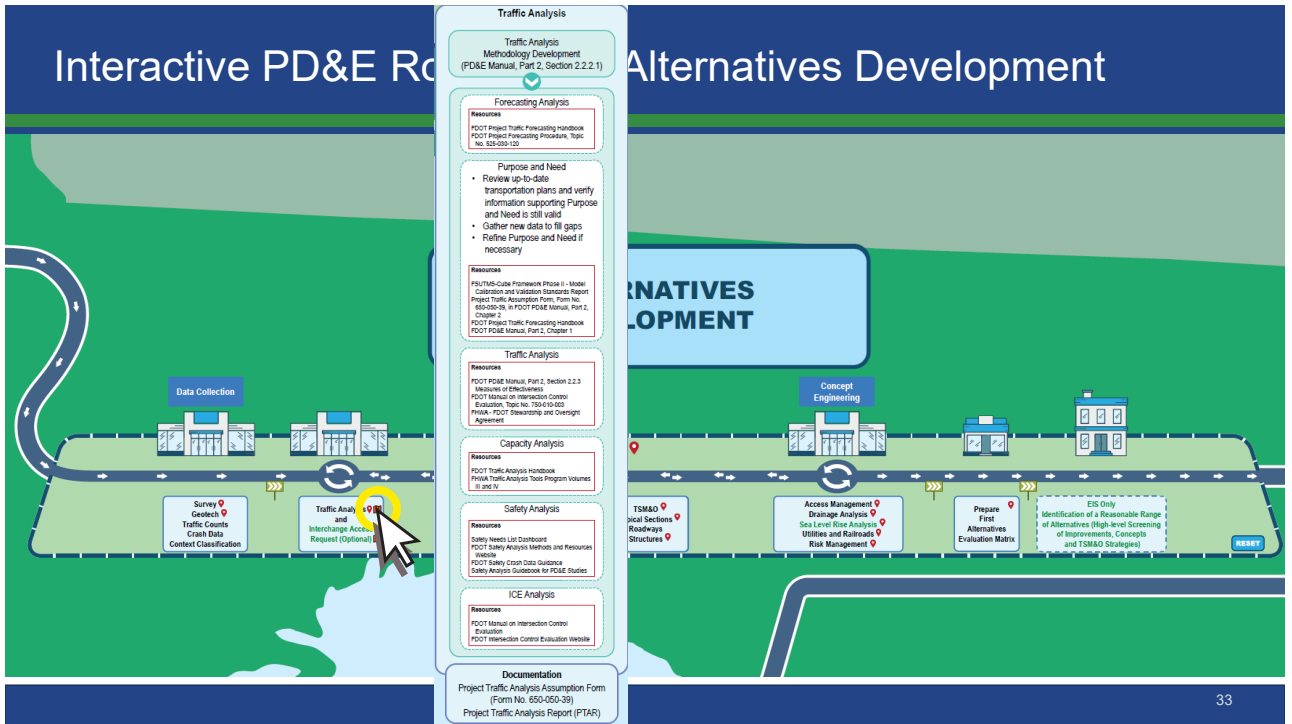
31

Interactive PD&E Roadmap – Alternatives Development

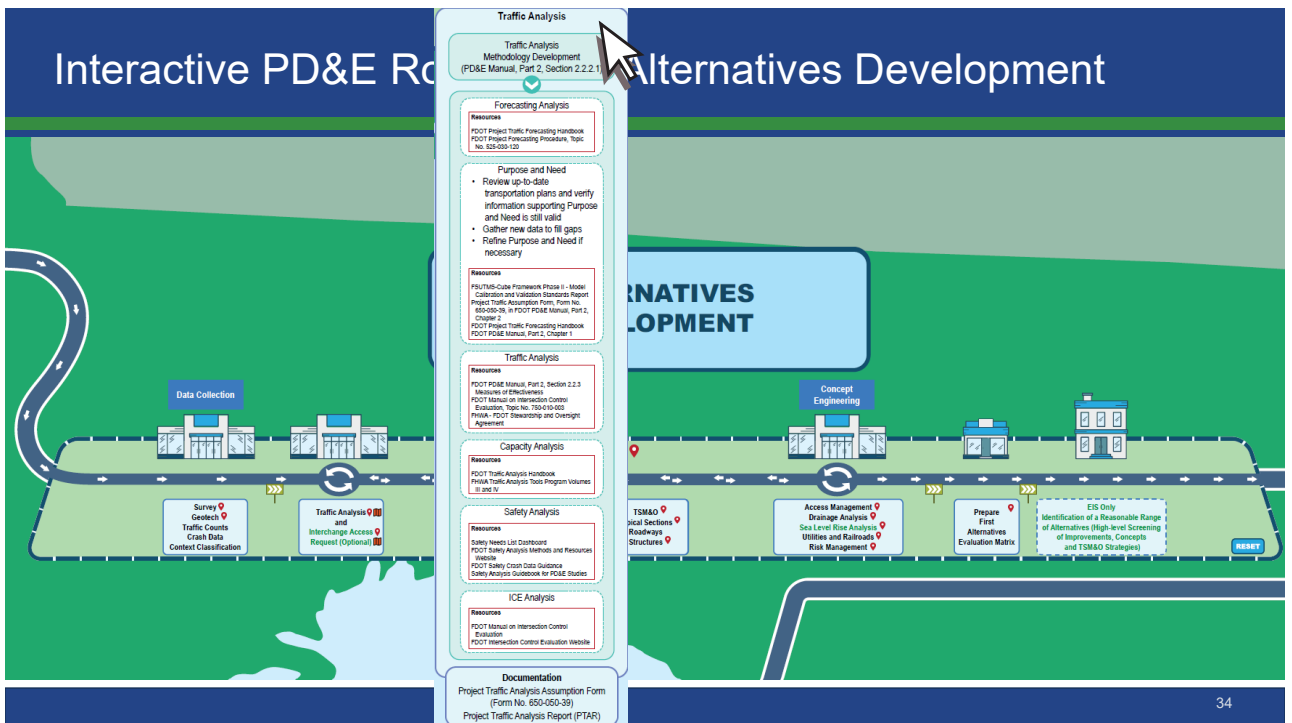


32

32

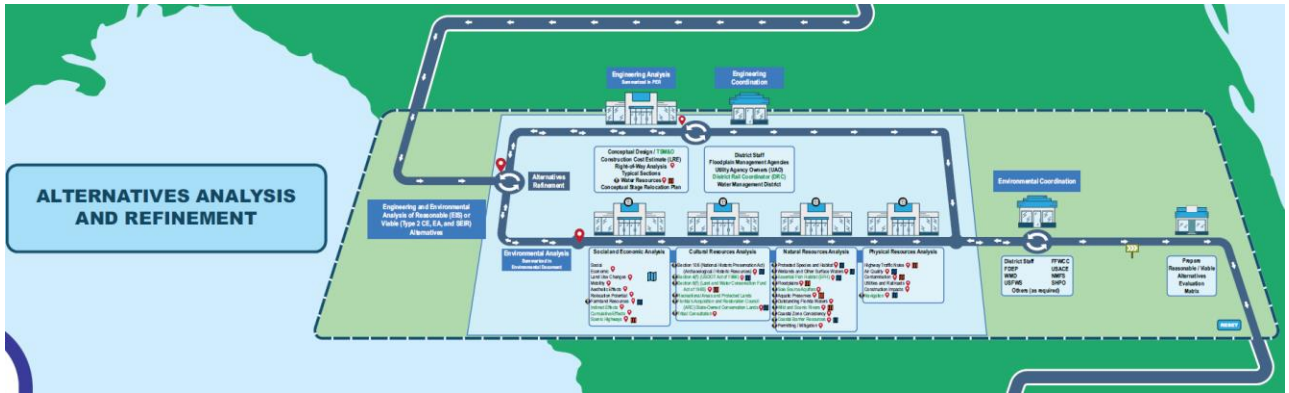


33



34

Interactive PD&E Roadmap – Alternatives Analysis

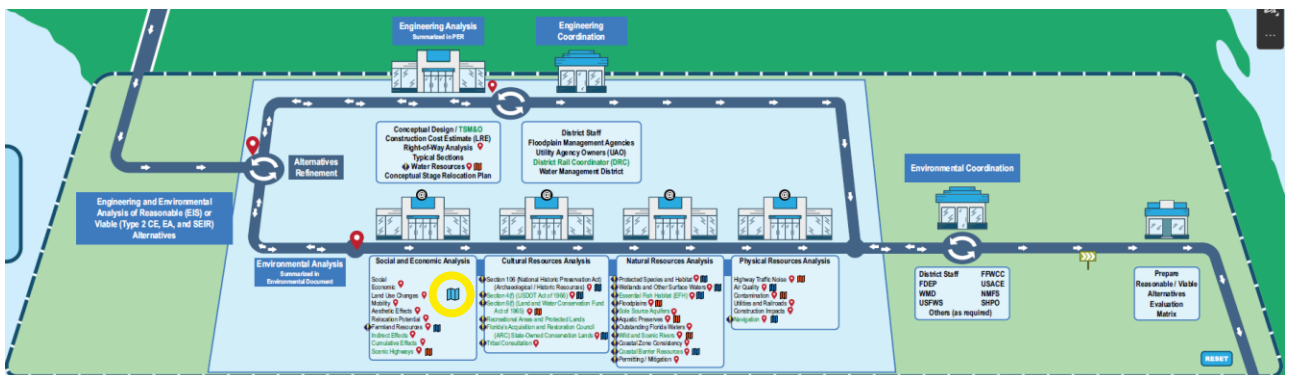


TRANSPORTATION
SYMPOSIUM

35

35

Interactive PD&E Roadmap – Alternatives Analysis

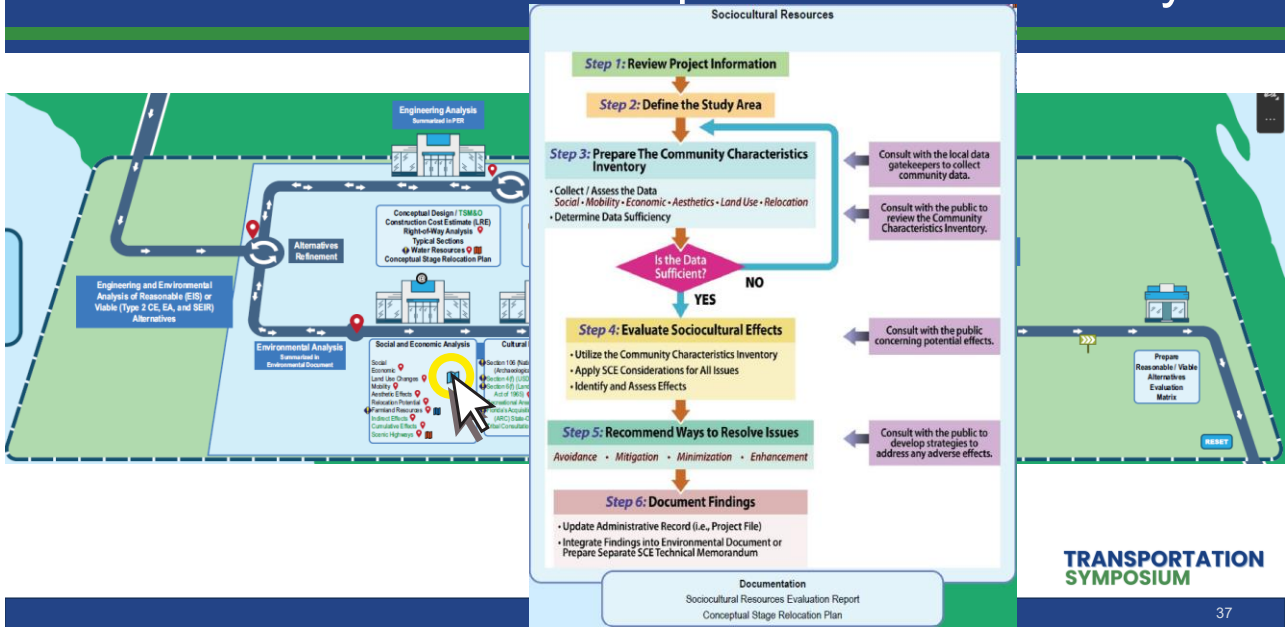


TRANSPORTATION
SYMPOSIUM

36

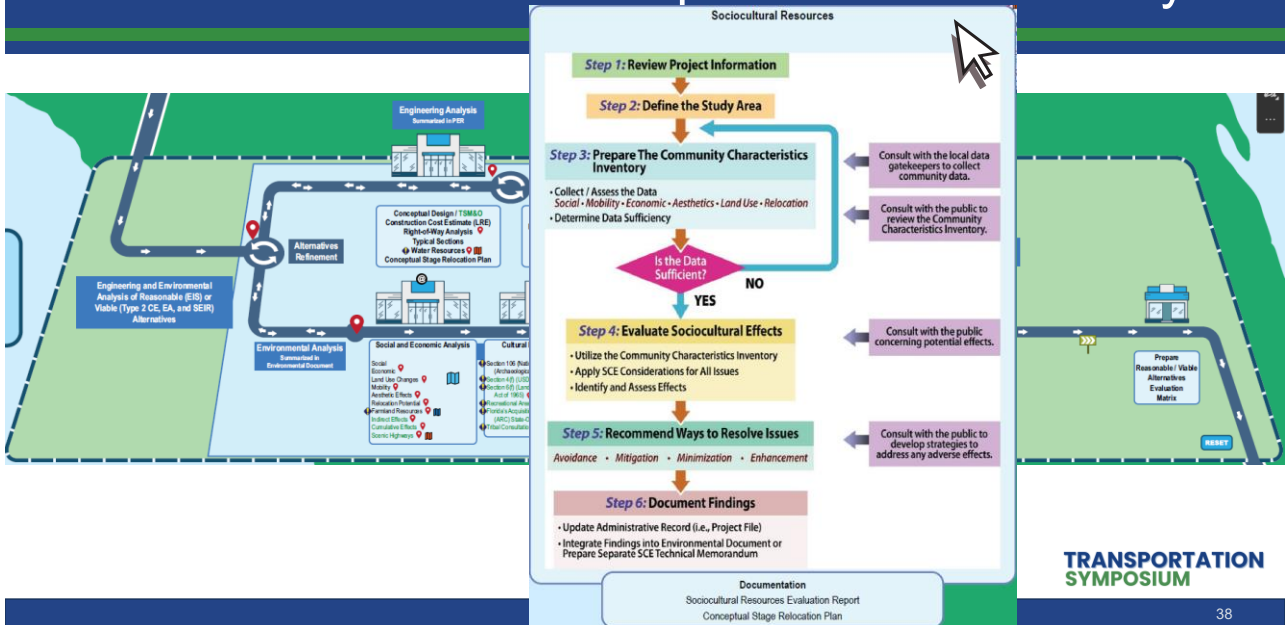
36

Interactive PD&E Roadmap – Alternatives Analysis



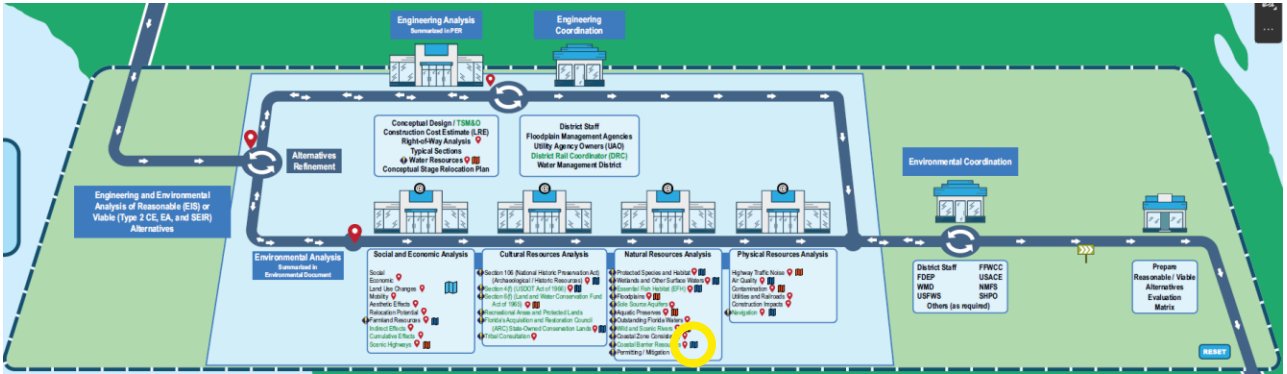
37

Interactive PD&E Roadmap – Alternatives Analysis



38

Interactive PD&E Roadmap – Alternatives Analysis

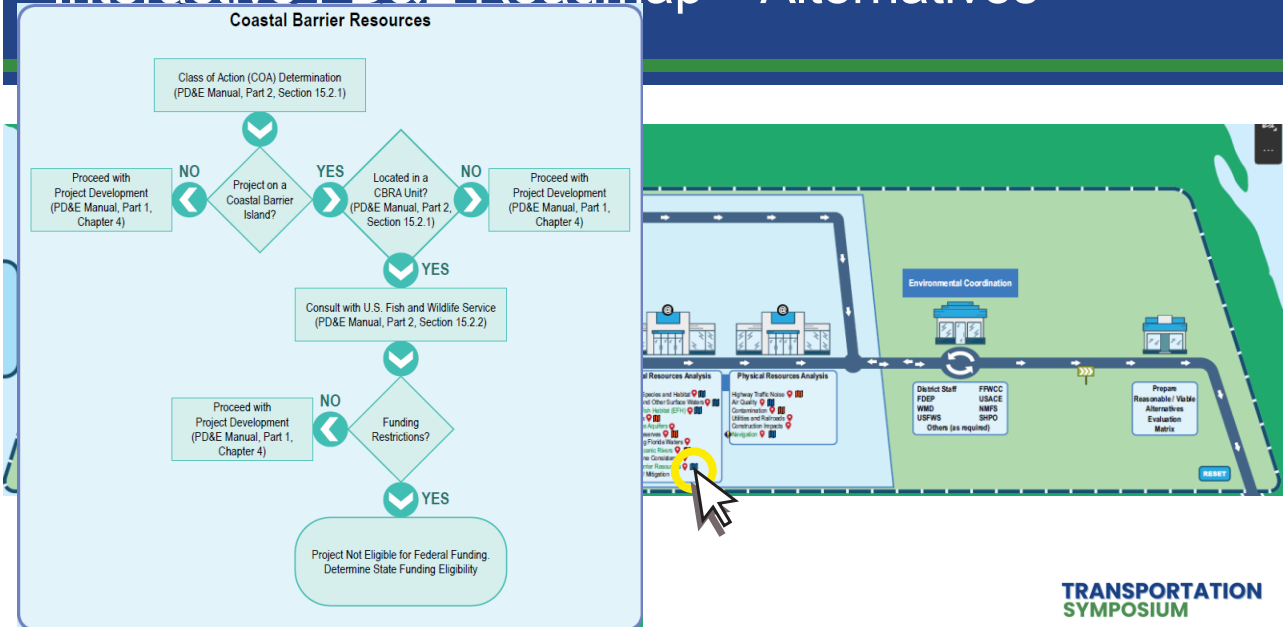


TRANSPORTATION
SYMPOSIUM

39

39

Interactive PD&E Roadmap – Alternatives

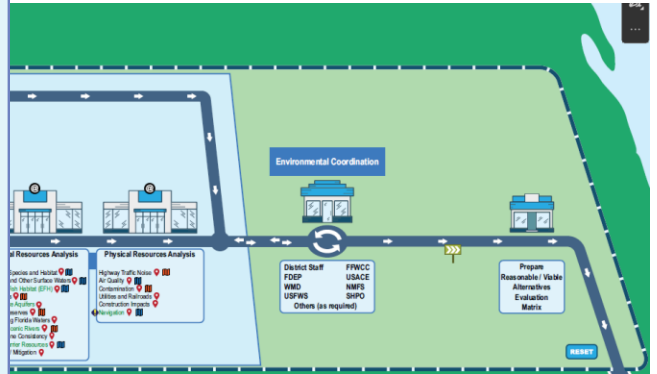
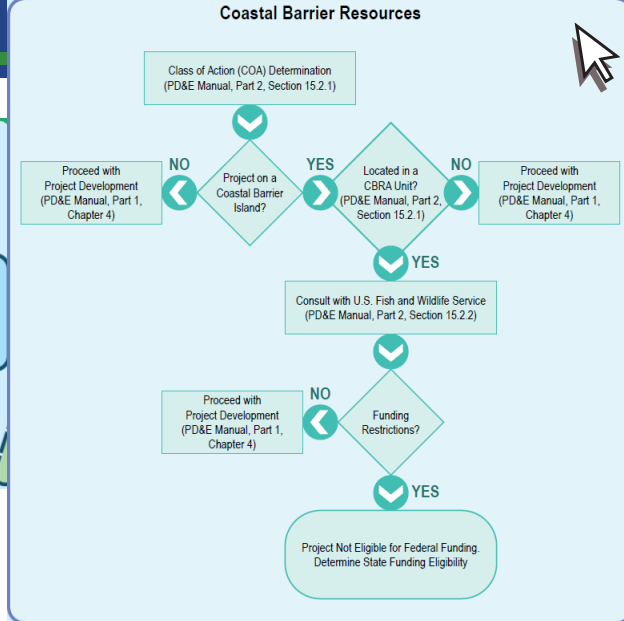


TRANSPORTATION
SYMPOSIUM

40

40

Interactive PD&E Roadmap – Alternatives

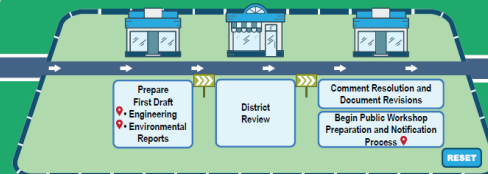


**TRANSPORTATION
SYMPOSIUM**

41

Interactive PD&E Roadmap – Draft Reports

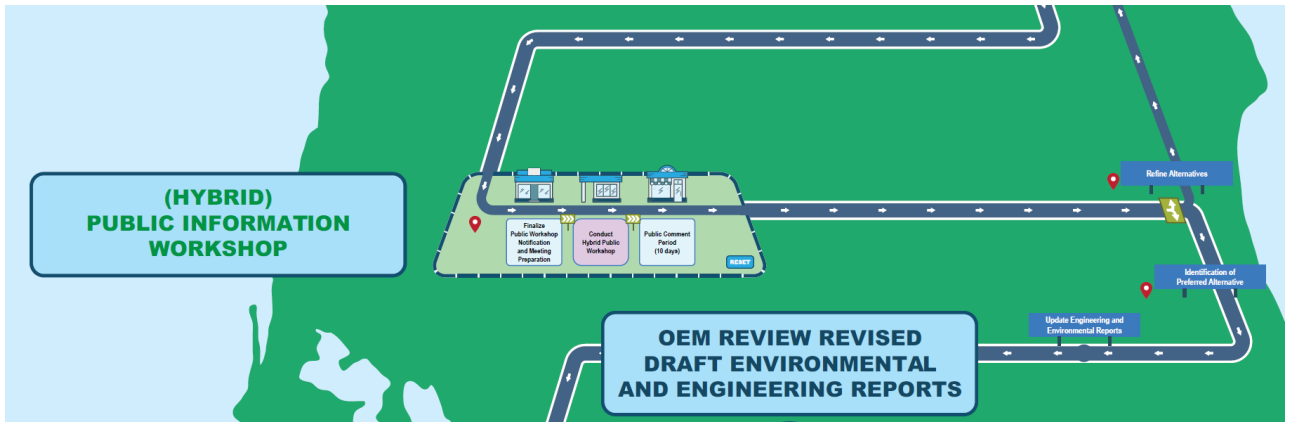
DISTRICT REVIEW DRAFT ENVIRONMENTAL AND ENGINEERING REPORTS



**TRANSPORTATION
SYMPOSIUM**

42

Interactive PD&E Roadmap – Hybrid Workshop

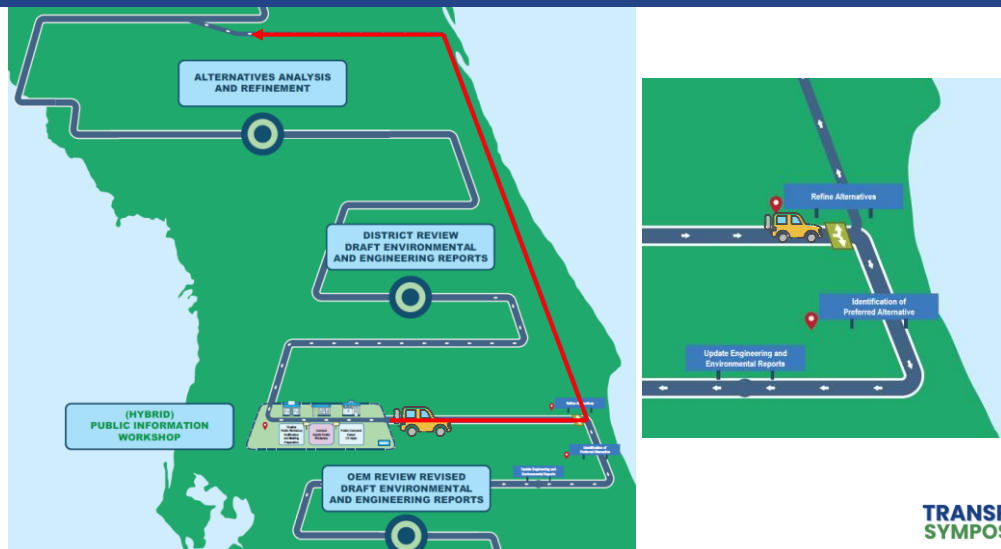


TRANSPORTATION
SYMPOSIUM

43

43

Interactive PD&E Roadmap – Hybrid Workshop

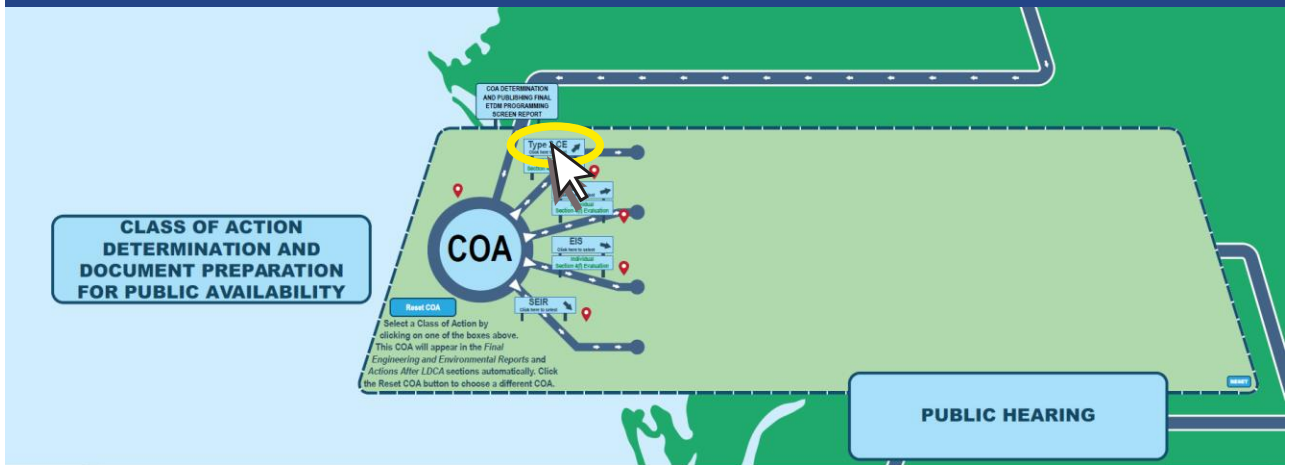


TRANSPORTATION
SYMPOSIUM

44

44

Interactive PD&E Roadmap – Class of Action

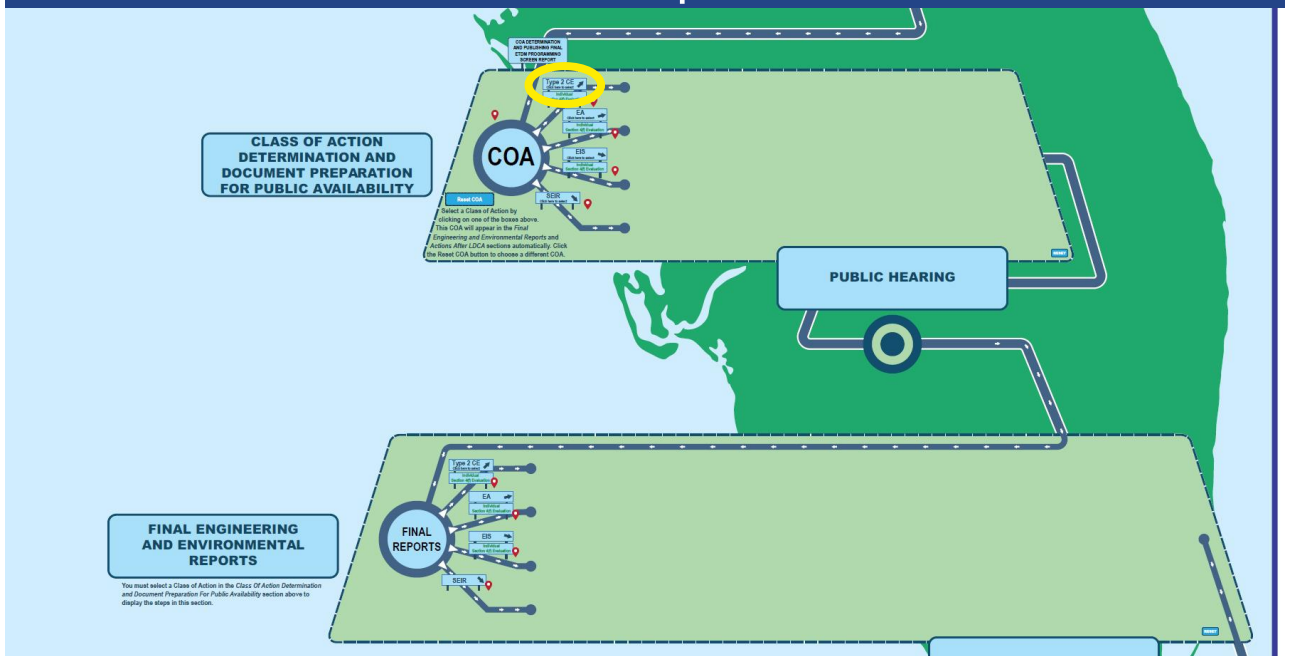


TRANSPORTATION
SYMPOSIUM

47

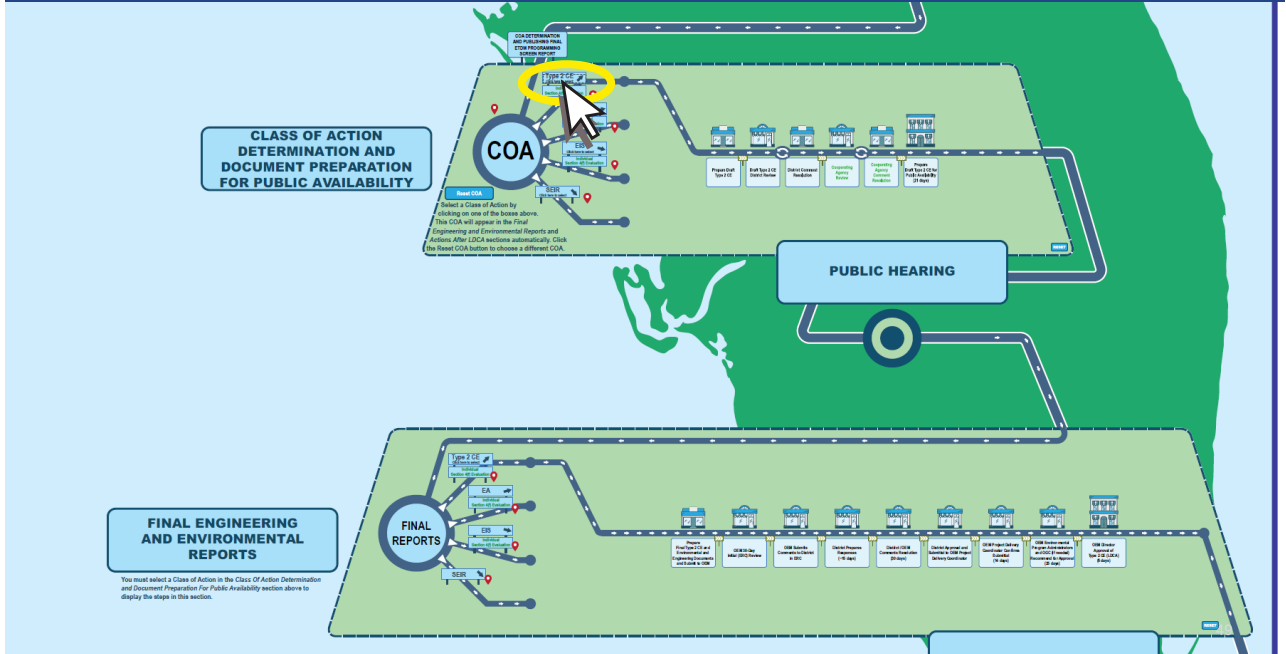
47

Interactive PD&E Roadmap – Class of Action



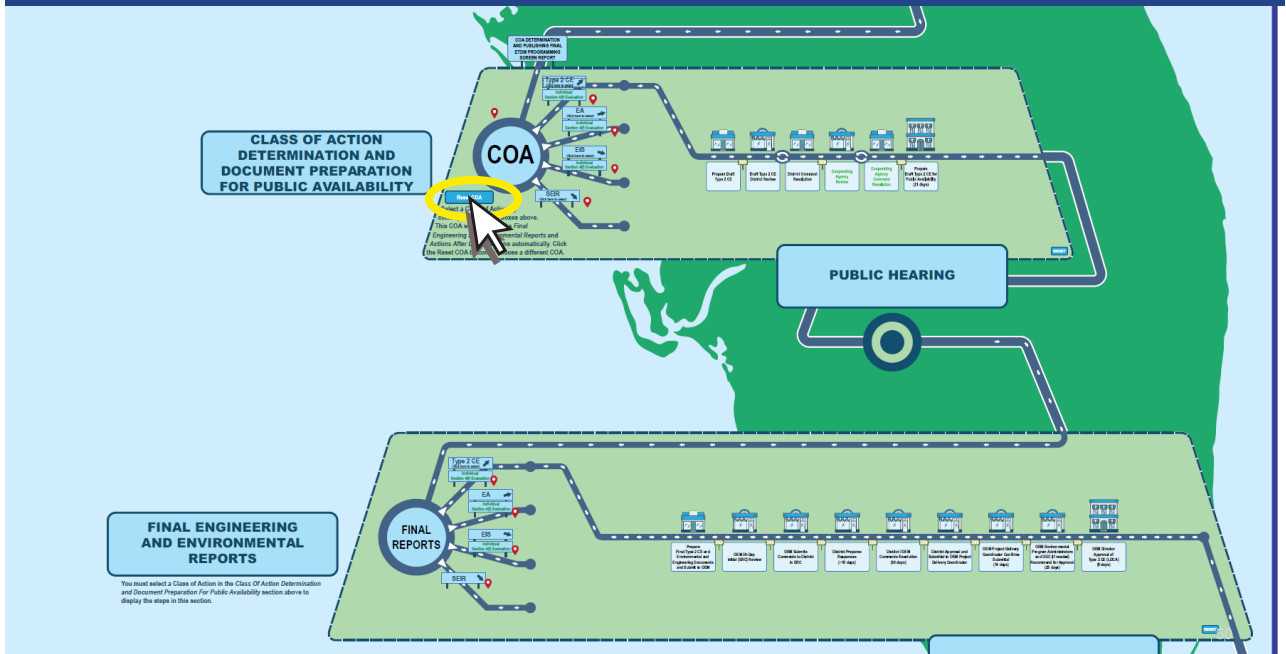
48

Interactive PD&E Roadmap – Class of Action

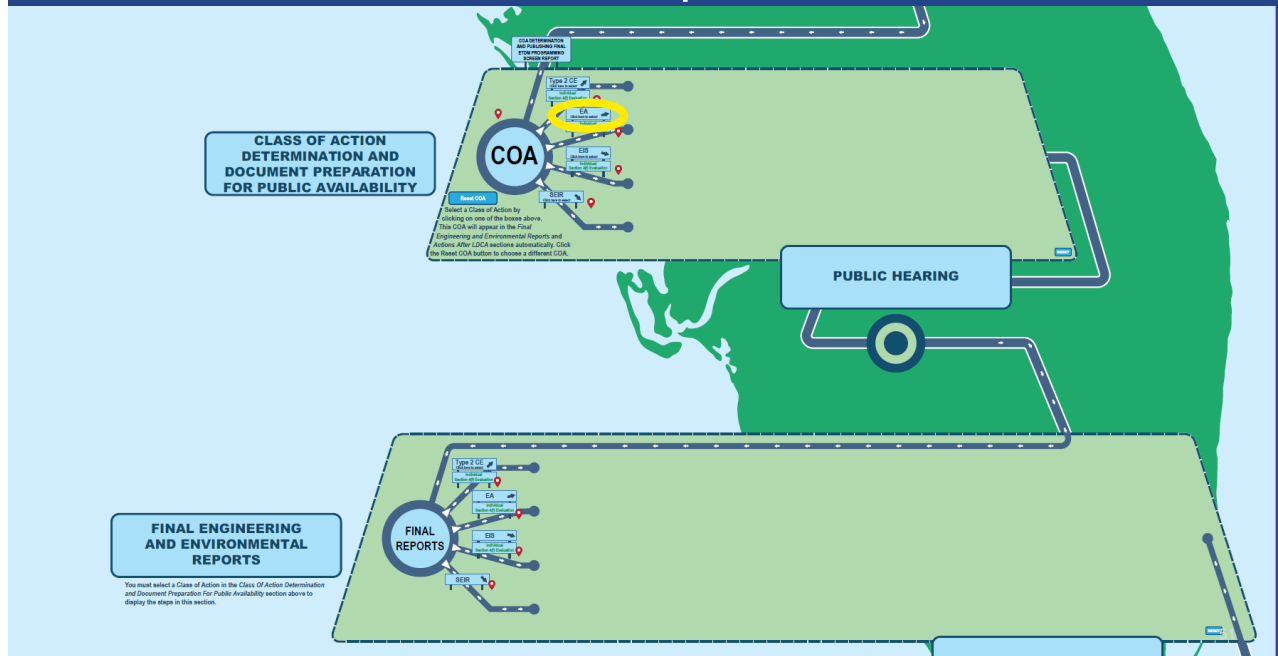


49

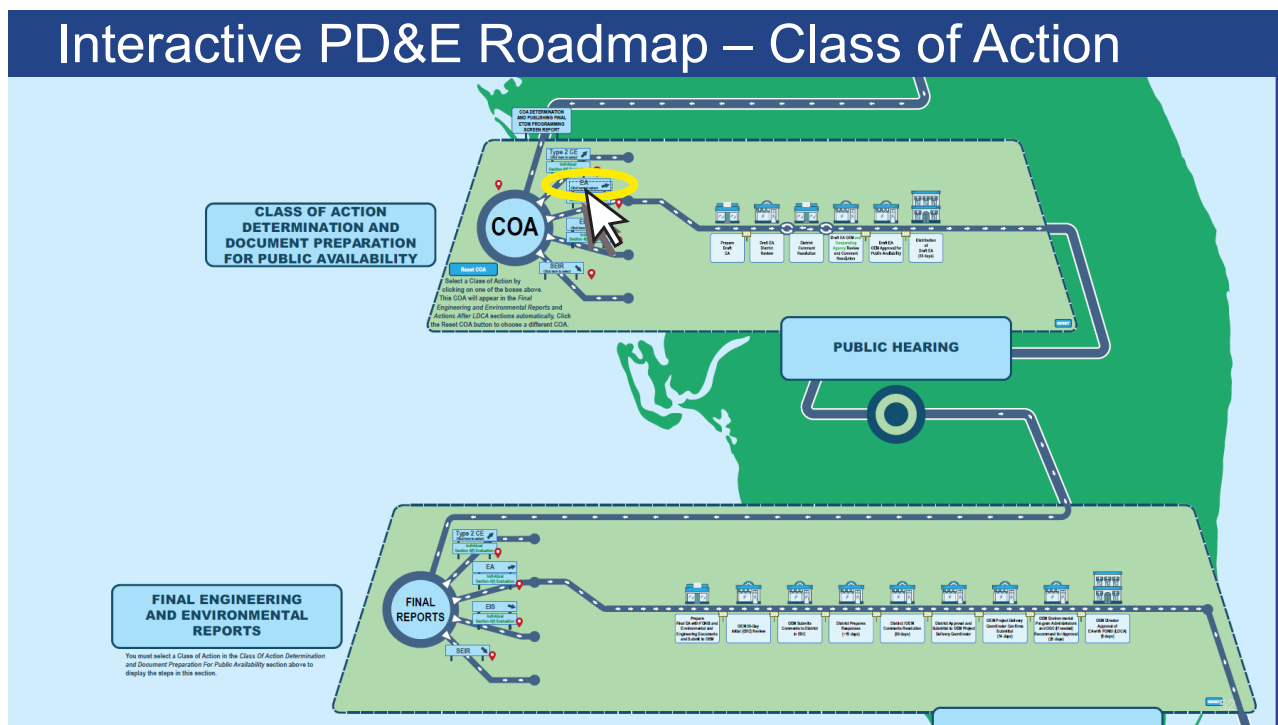
Interactive PD&E Roadmap – Class of Action



50



51



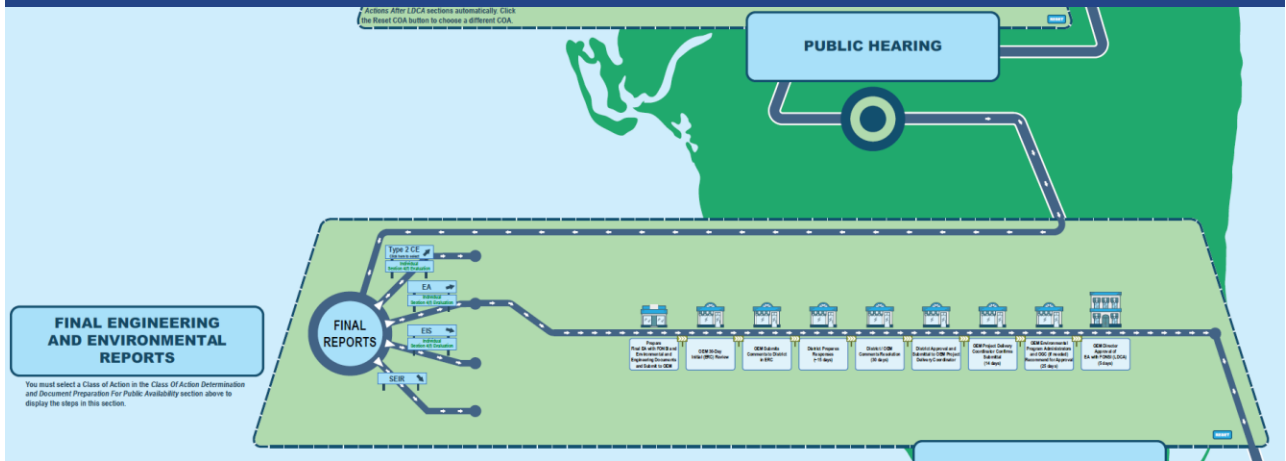
52



Interactive PD&E Roadmap – Final Reports



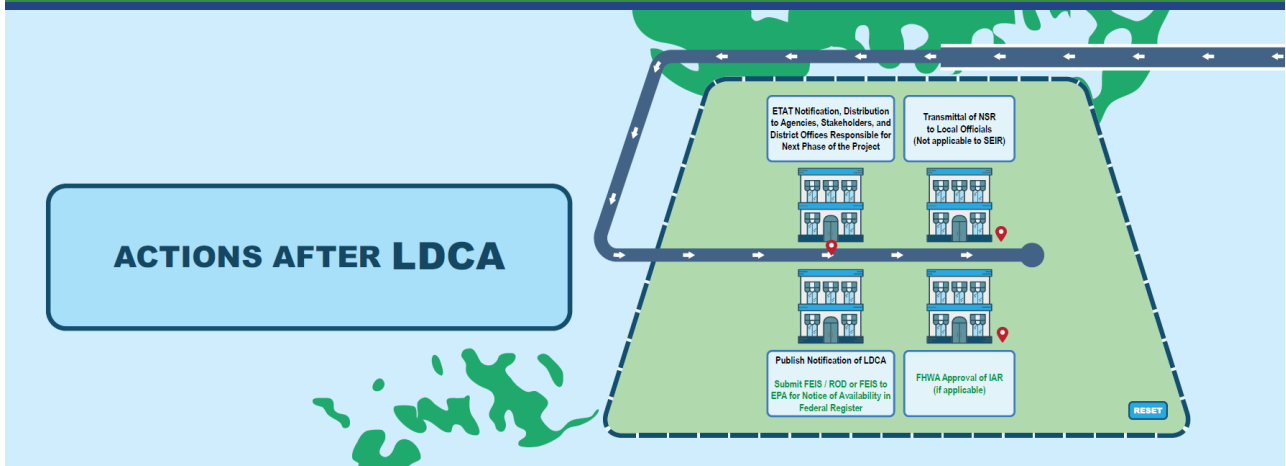
Interactive PD&E Roadmap – Final Reports



55

55

Interactive PD&E Roadmap – Further Actions



56

56

Frequent Updates

- 📖 Can be saved/downloaded, but frequent updates are expected.
- 📅 Anticipate updating every quarter.
- 👥 Contacts change frequently. Coordinate with your District or OEM for questions as appropriate.

TRANSPORTATION
SYMPOSIUM

57

Demo and Q&A

- 🏠 PD&E Roadmap Link – Live Session Only
- 🏠 <https://www.fdot.gov/environment/pde-manual/pdeman-current>



Adobe Acrobat
Document



Foxit PDF Editor
Document

TRANSPORTATION
SYMPOSIUM

58

58

Contact Us



Catherine Bradley

Catherine.Bradley@dot.state.fl.us



Greg Garrett

Greg.Garrett@atkinsrealis.com

TRANSPORTATION
SYMPOSIUM

59

59

Safety Message



TRANSPORTATION
SYMPOSIUM

60

60

 October 28-29, 2025
 Orlando, FL







DEADLINE

Please be sure to **certify your attendance** before leaving this event or no later than **November 30th**, in order to receive PDH/CEC. Detailed instructions are available on the Transportation Symposium website.

Transportation Symposium Website



SCAN ME