

June 19 - 20, 2025  
Hollywood, FL



**TRANSPORTATION  
SYMPOSIUM**

# Landscape as Roadway Infrastructure

Dean Stoddart, PLA  
State Transportation Landscape Architect

Transportation Symposium  
Website



SCAN ME

1


June 19 - 20, 2025  
Hollywood, FL

# Landscape as Roadway Infrastructure

Dean Stoddart, PLA  
State Transportation Landscape Architect

2

## Safety Message



### CUSTOM DO NOT DISTURB MESSAGES


Did you know most smartphones have an autoreply feature for when you're on the road? Turn on Do not Disturb before you drive, and let the phone do all the hard work while you ride around distraction-free.

Just one catch — pre-made do not disturb phone messages are usually bland, boring, and not your style, we're sure. That's where we come in!


We've created a plethora of do not disturb messages for you to add to your phone. With a wide range of tones and emotions, we're sure you'll find the right do not disturb message for you!

[FIND YOUR NEW DND MESSAGE HERE](#)

Not sure how to activate or customize your autoreply message? Here's how:



[Apple Tutorial](#)



[Android Tutorial](#)

- Sorry, fam. Driving and vibing rn. Can't talk but I'll get back to you when I'm there.
- My phone is literally responding to you on its own right now. Lol, this is an autoreply bc I'm driving. I'll get back to ya soon.
- Yo! Sorry I can't text rn, I'm behind the wheel. I'll get back to you when I'm done. Thx.
- Thanks for your text. I'm driving right now though, so I'll get back to you when I get there.
- This is my phone autoreplying. I'm driving and I'll hit you back once I'm at my destination. Sorry for the inconvenience!
- Currently operating a motor vehicle which requires me to not concurrently operate my cellular phone... you get it — I can't text and drive. I'll get back to you.

**TRANSPORTATION SYMPOSIUM**

<https://www.fdot.gov/projects/targetzero/home/distracted>

3

## Florida Scenic Highway Program (FSHP)






Discover and experience Florida's Scenic Highways

<http://www.FloridaScenicHighways.com>

**2025 FSHP Statewide Meeting held on Big Bend Scenic Byway**

**TRANSPORTATION SYMPOSIUM**

4

# Beautification Grants

2024-2025 Florida Beautification Grant Applicants and Contact Information											
Grant #	District	Applicant	Project Name	Highway	Highway Local Name	Grant Amount Requested	Applicant Match Amount	Total Project Cost	REDI Yes/No	Ranking	Amount Funded
1	3	Town of Sneads	Sneads Highway 90 Beautification	US 90	US 90	\$110,281	\$9,045	\$119,326	Yes	3.89	\$ 110,281.00
2	1	City of Sarasota	US 41 from University Pkwy to General Spaatz Blvd	US 41	University Pkwy / Spaatz Blvd	\$55,000	\$55,000	\$110,000	No	5.22	\$ 55,000.00
3	3	Wakulla County	Crawfordville Hwy Medians Beautification	US 319 / SR 61 / SR 369	Crawfordville Hwy	\$80,700	\$17,675	\$98,375	Yes	5.33	\$ 80,700.00
4	3	Wakulla County	Coastal Highway Beautification	US 98 / SR 30	Coastal Highway	\$111,817	\$22,175	\$133,992	Yes	5.33	\$ 111,817.00
5	6	North Bay Village	North Bay Village Beautification Grant 2024-2025	SR 934	79 St / John F. Kennedy Causeway	\$97,787	\$33,378	\$131,165	No	6.22	\$ 97,787.00
6	4	City of Dania Beach	Highway Beautification Grant West - Dania Beach	SR A1A	Dania Beach Blvd	\$112,000	\$107,075	\$219,075	No	6.22	\$ 112,000.00
7	4	City of Dania Beach	Highway Beautification Grant East - Dania Beach	SR A1A	Dania Beach Blvd	\$112,000	\$149,190	\$261,190	No	6.22	\$ 112,000.00
8	6	City of Marathon	US 1 Beautification Airport Corridor	US 1	Overseas Hwy	\$112,000	\$378,990	\$490,990	No	6.56	\$ 112,000.00
9	6	Village of Pinecrest	Pinecrest US 1 Native Beautification	US 1 / SR 5	Harriet Tubman Hwy	\$112,000	\$184,117	\$296,117	No	7.11	\$ 112,000.00
10	6	City of Homestead	City of Homestead Beautification Project	SR 997 / SR 998 / SR 5	N Krome Ave / Cambell Dr / US 1	\$112,000	\$48,250	\$160,250	No	8.00	\$ 112,000.00
11	6	Town of Cutler Bay	Cutler Bay US-1 Beautification Phase 1 Project	US 1 / SR 5	South Dixie Hwy	\$112,000	\$45,000	\$157,000	No	8.67	\$ 105,030.00
Total Amount Requested						\$ 1,127,585.00				Total Amount Awarded	1,120,615.000

**TRANSPORTATION  
SYMPOSIUM**

<https://www.fdot.gov/roadway/landscape-architecture/beautification-grants>

5

5

# Florida Constitution

## Article II

- SECTION 7. Natural resources and scenic beauty.—
- (a) It shall be the policy of the state to conserve and protect its natural resources and scenic beauty. Adequate provision shall be made by law for the abatement of air and water pollution and of excessive and unnecessary noise and for the conservation and protection of natural resources.

**TRANSPORTATION  
SYMPOSIUM**

6

6



## Florida Statute

## 334.044 (26)

(26) To provide for the enhancement of environmental benefits, including air and water quality; to prevent roadside erosion; to conserve the natural roadside growth and scenery; and to provide for the implementation and maintenance of roadside conservation, enhancement, and stabilization programs. At least 1.5 percent of the amount contracted for construction projects shall be allocated by the department on a statewide basis for the purchase of plant materials.

Department districts may not expend funds for landscaping in connection with any project that is limited to resurfacing existing lanes unless the expenditure has been approved by the department's secretary or the secretary's designee. To the greatest extent practical, at least 50 percent of the funds allocated under this subsection shall be allocated for large plant materials and the remaining funds for other plant materials. Except as prohibited by applicable federal law or regulation, all plant materials shall be purchased from Florida commercial nursery stock in this state on a uniform competitive bid basis. The department shall develop grades and standards for landscaping materials purchased through this process. To accomplish these activities, the department may contract with nonprofit organizations having the primary purpose of developing youth employment opportunities.

TRANSPORTATION  
SYMPOSIUM

7

7

## Florida Statute

## 334.044 (26)

(26) To provide for the enhancement of environmental benefits, including air and water quality; to prevent roadside erosion; to conserve the natural roadside growth and scenery; and to provide for the implementation and maintenance of roadside conservation, enhancement, and stabilization programs. **At least 1.5 percent of the amount contracted for construction projects shall be allocated by the department on a statewide basis for the purchase of plant materials.**

Department districts may not expend funds for landscaping in connection with any project that is limited to resurfacing existing lanes unless the expenditure has been approved by the department's secretary or the secretary's designee. To the greatest extent practical, at least 50 percent of the funds allocated under this subsection shall be allocated for large plant materials and the remaining funds for other plant materials. Except as prohibited by applicable federal law or regulation, all plant materials shall be purchased from Florida commercial nursery stock in this state on a uniform competitive bid basis. The department shall develop grades and standards for landscaping materials purchased through this process. To accomplish these activities, the department may contract with nonprofit organizations having the primary purpose of developing youth employment opportunities.

TRANSPORTATION  
SYMPOSIUM

8

8



# FDOT Policy

Effective: January 29, 2020  
Review: October 28, 2019  
Office: Production Support  
Topic No.: 000-650-011-d

It is the policy of the Florida Department of Transportation to conserve, protect, and enhance Florida's natural resources and scenic beauty when planning, constructing, and maintaining the State Transportation System.

Under this policy, Florida can have:

- Safe, attractive, and high-quality transportation facilities that reflect and recognize the beauty and nature of Florida.
- Corridors with landscapes that improve air and water quality, benefit ecosystems, and enhance communities.
- A transportation system that attracts and supports diverse economic opportunities and tourism.

In carrying out this policy, the Department will:

- Develop and commit to aesthetics, landscape opportunities, and landscape conservation and protection concepts early in programming, planning, and designing of transportation facilities.
- Rely on interdisciplinary planning and design processes.
- Engage in public outreach and communicate with local governments and communities to form strong partnerships.
- Accommodate existing and proposed landscapes.
- Utilize a diverse mix of context appropriate, resilient, Florida Friendly, primarily native plants that reflect the regional identity.
- Implement design and construction solutions to streamline landscape maintenance activities.
- Promote awareness of the many benefits of transportation landscapes enjoyed by the public and within the Department.
- Measure the costs and benefits.

**TRANSPORTATION  
SYMPOSIUM**

9

9

# FDOT Policy

Effective: January 29, 2020  
Review: October 28, 2019  
Office: Production Support  
Topic No.: 000-650-011-d

It is the policy of the Florida Department of Transportation to conserve, protect, and enhance Florida's natural resources and scenic beauty when planning, constructing, and maintaining the State Transportation System.

Under this policy, Florida can have:

- Safe, attractive, and high-quality transportation facilities that reflect and recognize the beauty and nature of Florida.
- Corridors with landscapes that improve air and water quality, benefit ecosystems, and enhance communities.
- A transportation system that attracts and supports diverse economic opportunities and tourism.

In carrying out this policy, the Department will:

- Develop and commit to aesthetics, landscape opportunities, and landscape conservation and protection concepts early in programming, planning, and designing of transportation facilities.
- Rely on interdisciplinary planning and design processes.
- Engage in public outreach and communicate with local governments and communities to form strong partnerships.
- Accommodate existing and proposed landscapes.
- Utilize a diverse mix of context appropriate, resilient, Florida Friendly, primarily native plants that reflect the regional identity.
- Implement design and construction solutions to streamline landscape maintenance activities.
- Promote awareness of the many benefits of transportation landscapes enjoyed by the public and within the Department.
- Measure the costs and benefits.

**TRANSPORTATION  
SYMPOSIUM**

10

10

# Excuses

The plants don't make me safer

Trees kill people

Landscape doesn't do anything to move traffic along

The landscaping doesn't do anything to move traffic along

We don't have the funds to maintain what we have

Those trees might block my cameras

Leaves just get up on the streets

There are too many utilities here

I hate Pine trees

Landscape cost more than it's worth

Just put some landscape in to pretty it up

We can't mow those areas with big mowers now

Landscape takes up too much space

Landscape takes up too much space

Landscape takes up too much space

TRANSPORTATION SYMPOSIUM

11

11

## Breakdown Statute 334.044 (26)

- Spend 1.5% of roadway construction budget for on-system landscape
- to provide for the enhancement of environmental benefits
- to provide for the enhancement of air quality
- to provide for the enhancement of water quality
- to prevent roadside erosion
- to conserve the natural roadside growth
- to conserve the natural roadside scenery
- to provide for the implementation and maintenance of roadside conservation
- to provide for enhancement
- to provide for stabilization programs

TRANSPORTATION SYMPOSIUM

12

12

## Breakdown Statute 334.044 (26)

- Spend 1.5% of roadway construction budget for on-system landscape
  - to provide for the enhancement of environmental benefits
  - to provide for the enhancement of air quality
  - to provide for the enhancement of water quality
  - to prevent roadside erosion
  - to conserve the natural roadside growth
  - to conserve the natural roadside scenery
  - to provide for the implementation and maintenance of roadside conservation
  - to provide for enhancement
  - to provide for stabilization programs

TRANSPORTATION  
SYMPOSIUM

13

13

## How the 1.5% is Monitored

### ***By Florida Statute:***

- 1999 to 2002  
No less than 1%
- 2003 to Present  
No less than 1.5%

### ***By FDOT Policy:***

- 2013 to 2015  
1.5%
- 2015 to 2018  
1.5% to 1.6%
- 2018 to Present  
No less than 1.5%

Measured Each Year  
Current Year (FY25) &  
Tentative Work Program (FY26 – FY30)

Landscape Costs

Divided by Construction Costs

= No less than 1.5%

TRANSPORTATION  
SYMPOSIUM

14



## Systems Used in Landscape Calculation

- Systems that support automation in the landscape calculation:
  - Work Program Administration System
  - Long Range Estimating System (LRE)
  - TRNS\*PORT

TRANSPORTATION  
SYMPOSIUM

15

## Landscape Cost Criteria

- Included:
  - Construction projects and boxes with a landscaping work mix.
  - Maintenance projects and boxes with a landscaping work mix.
  - Highway Beautification Grants.
  - Construction projects with landscaping pay items.
  - Irrigation system pay items.
- Excluded:
  - Fixed Capital Outlay, CIGP, SCOP, SCRAP.
  - Moving Florida Forward projects.
  - Local funds on landscape projects.
  - Public Private Partnerships before 2016.
  - Public Private Partnerships/Operate & Maintain after 2016.

TRANSPORTATION  
SYMPOSIUM

16

## Construction Cost Criteria

- **Included:**
  - Total dollar amounts from all construction projects in the selected fiscal year(s).
- **Excluded:**
  - Public Private Partnerships before 2016.
  - Public Private Partnerships/Operate & Maintain after 2016.
  - Moving Florida Forward projects.

TRANSPORTATION  
SYMPOSIUM

17

## Statewide Landscape Totals: Fiscal Year 25-30

Fiscal Year	Highway Beautification Cost	Total Construction Cost	% of Construction for Beautification
2025	\$ 118,712,113	\$ 5,915,458,715	2.01 %
2026	\$ 92,706,837	\$ 5,444,138,645	1.70 %
2027	\$ 59,679,799	\$ 3,898,471,298	1.53 %
2028	\$ 60,293,701	\$ 3,865,493,100	1.56 %
2029	\$ 42,546,620	\$ 2,831,622,485	1.50 %
2030	\$ 35,722,011	\$ 2,354,467,090	1.52 %

FY25-30 data as of 6/3/2025

TRANSPORTATION  
SYMPOSIUM

18

## Influencing Factors on Landscape Calculation

- Construction project advances
  - Example: SR35 (US 301) from CR 470 to CR 525E construction advances from FY26 to FY25. Landscaping needs decrease in FY26 and increase in FY25.
- Construction project defers
  - Example: SR35 (US 301) from CR 470 to CR 525E construction defers from FY26 to FY29. Landscaping needs decrease in FY26 and increase in FY29.
- Landscape project advances/defers
  - May bring statewide threshold below statutory 1.5% which requires backfilling (i.e., new project, project advances/defers, adjustment to box)

TRANSPORTATION  
SYMPOSIUM

19

## Breakdown Statute 334.044 (26)

- Spend 1.5% of roadway construction budget for on-system landscape
- to provide for the enhancement of environmental benefits
- to provide for the enhancement of air quality
- to provide for the enhancement of water quality
- to prevent roadside erosion
- to conserve the natural roadside growth
- to conserve the natural roadside scenery
- to provide for the implementation and maintenance of roadside conservation
- to provide for enhancement
- to provide for stabilization programs

TRANSPORTATION  
SYMPOSIUM

20

20



## Breakdown Statute 334.044 (26)

- Spend 1.5% of roadway construction budget for on-system landscape
- to provide for the enhancement of environmental benefits
- to provide for the enhancement of air quality
- to provide for the enhancement of water quality
- to prevent roadside erosion
- to conserve the natural roadside growth
- to conserve the natural roadside scenery
- to provide for the implementation and maintenance of roadside conservation
- to provide for enhancement
- to provide for stabilization programs

TRANSPORTATION  
SYMPOSIUM

21

21



22

22





23



24





25



26





27



28



29

## Breakdown Statute 334.044 (26)

- Spend 1.5% of roadway construction budget for on-system landscape
- to provide for the enhancement of environmental benefits
- to provide for the enhancement of air quality
- to provide for the enhancement of water quality
- to prevent roadside erosion
- to conserve the natural roadside growth
- to conserve the natural roadside scenery
- to provide for the implementation and maintenance of roadside conservation
- to provide for enhancement
- to provide for stabilization programs

**TRANSPORTATION**  
**SYMPOSIUM**

30

30



## Breakdown Statute 334.044 (26)

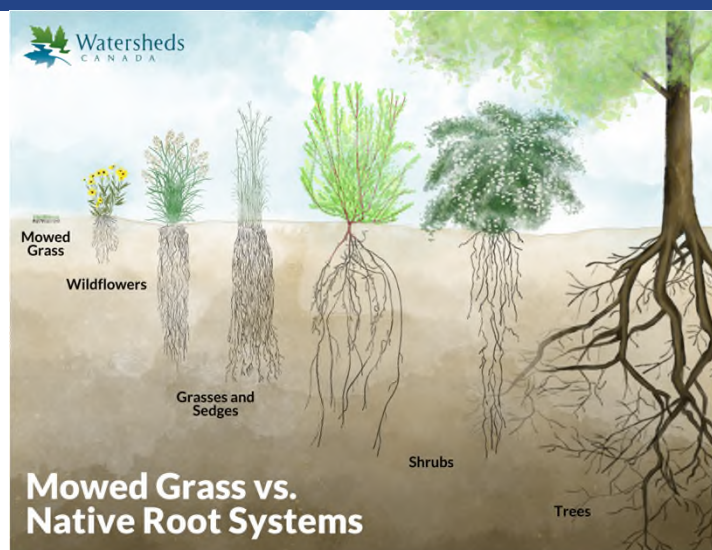
- Spend 1.5% of roadway construction budget for on-system landscape
- to provide for the enhancement of environmental benefits
- to provide for the enhancement of air quality
- to provide for the enhancement of water quality
- to prevent roadside erosion
- to conserve the natural roadside growth
- to conserve the natural roadside scenery
- to provide for the implementation and maintenance of roadside conservation
- to provide for enhancement
- to provide for stabilization programs

TRANSPORTATION  
SYMPOSIUM

31

31

## Nonwoven Geo-fiber Mesh



32

32



## Erosion Control

- Plant roots stabilize soil by creating a non-woven 3-dimensional fibrous mesh structure within the soil profile.



TRANSPORTATION  
SYMPOSIUM

33

33



34







37



38



## Breakdown Statute 334.044 (26)

- Spend 1.5% of roadway construction budget for on-system landscape
- to provide for the enhancement of environmental benefits
- to provide for the enhancement of air quality
- to provide for the enhancement of water quality
- to prevent roadside erosion
- to conserve the natural roadside growth
- to conserve the natural roadside scenery
- to provide for the implementation and maintenance of roadside conservation
- to provide for enhancement
- to provide for stabilization programs

TRANSPORTATION  
SYMPOSIUM

39

39

## Breakdown Statute 334.044 (26)

- Spend 1.5% of roadway construction budget for on-system landscape
- to provide for the enhancement of environmental benefits
- to provide for the enhancement of air quality
- to provide for the enhancement of water quality
- to prevent roadside erosion
- to conserve the natural roadside growth
- to conserve the natural roadside scenery
- to provide for the implementation and maintenance of roadside conservation
- to provide for enhancement
- to provide for stabilization programs

TRANSPORTATION  
SYMPOSIUM

40

40



41



42



43

## Breakdown Statute 334.044 (26)

- Spend 1.5% of roadway construction budget for on-system landscape
- to provide for the enhancement of environmental benefits
- to provide for the enhancement of air quality
- to provide for the enhancement of water quality
- to prevent roadside erosion
- to conserve the natural roadside growth
- to conserve the natural roadside scenery
- to provide for the implementation and maintenance of roadside conservation
- to provide for enhancement
- to provide for stabilization programs

TRANSPORTATION  
SYMPOSIUM

44

44



## Breakdown Statute 334.044 (26)

- Spend 1.5% of roadway construction budget for on-system landscape
- to provide for the enhancement of environmental benefits
- to provide for the enhancement of air quality
- to provide for the enhancement of water quality
- to prevent roadside erosion
- to conserve the natural roadside growth
- to conserve the natural roadside scenery
- to provide for the implementation and maintenance of roadside conservation
- to provide for enhancement
- to provide for stabilization programs

TRANSPORTATION  
SYMPOSIUM

45

45



46

## Non-woven fibrous soil mesh



TRANSPORTATION  
SYMPOSIUM

47

47



48



## Man made Seawall



49

49

## Mother Nature's Sea Wall



TRANSPORTATION  
SYMPOSIUM

50

50





51

## Mangroves



TRANSPORTATION  
SYMPOSIUM

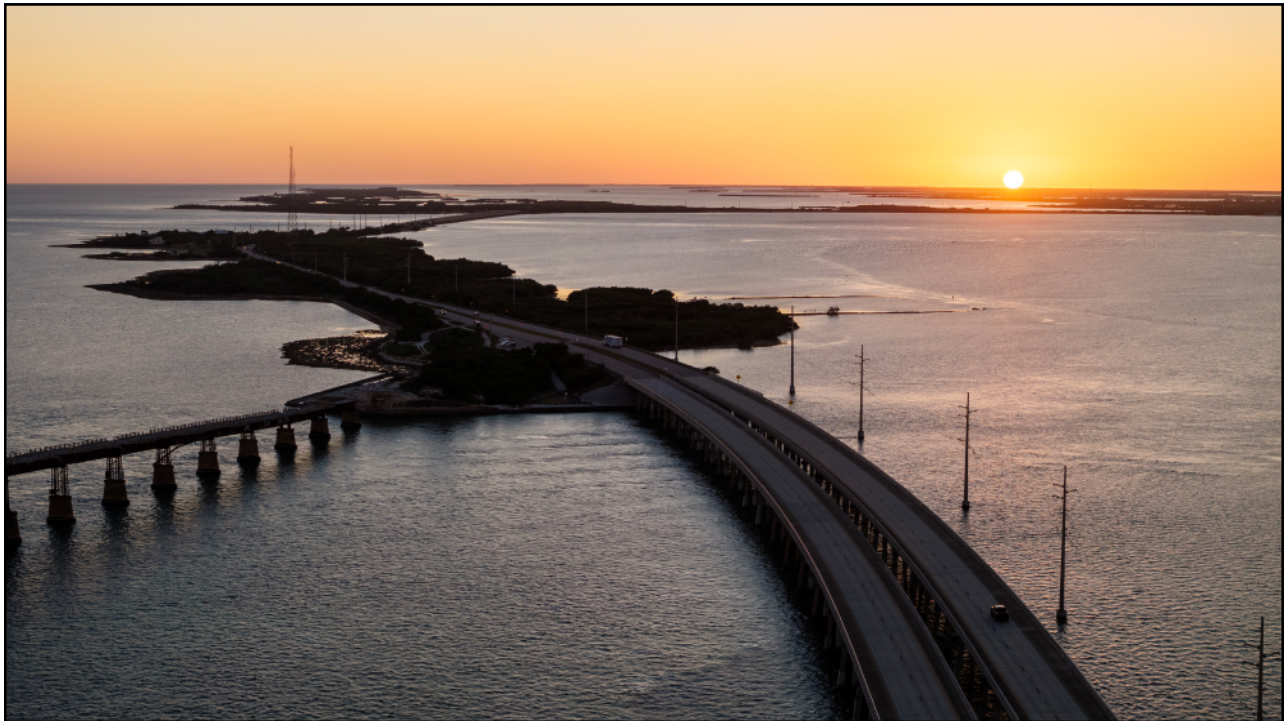
52

52





53



54





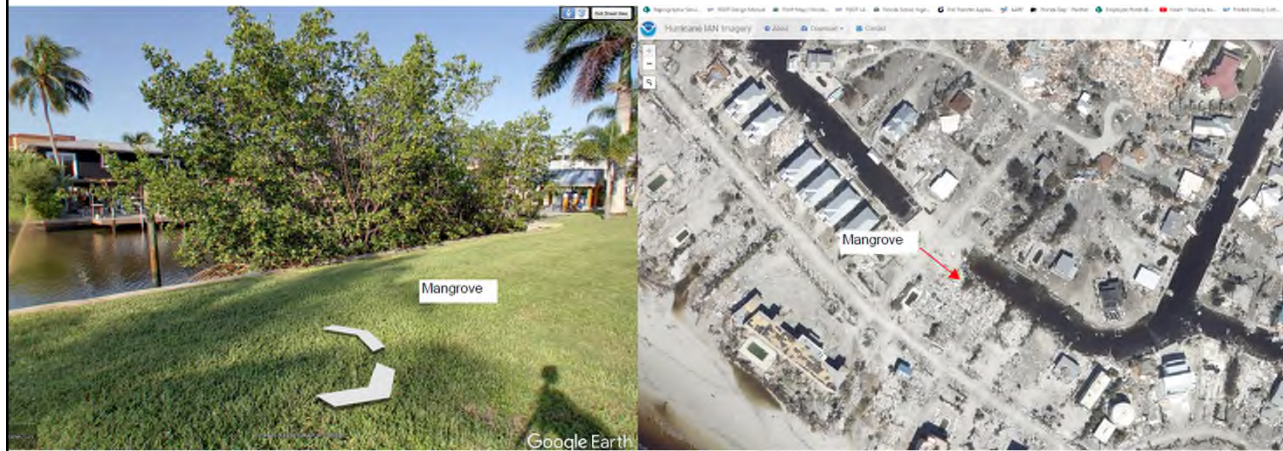
55



56



## Mangrove – Hurricane Ian

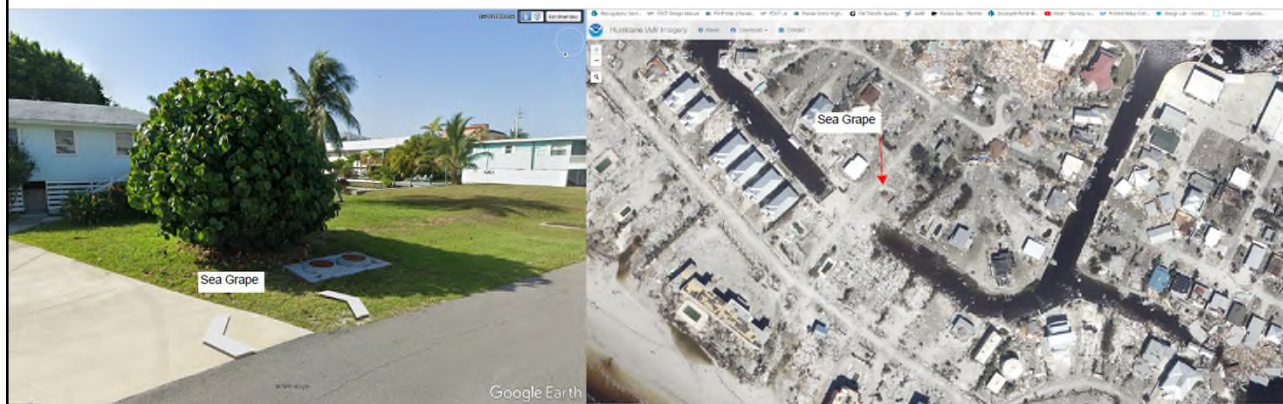


TRANSPORTATION  
SYMPOSIUM

57

57

## Sea Grape – Hurricane Ian

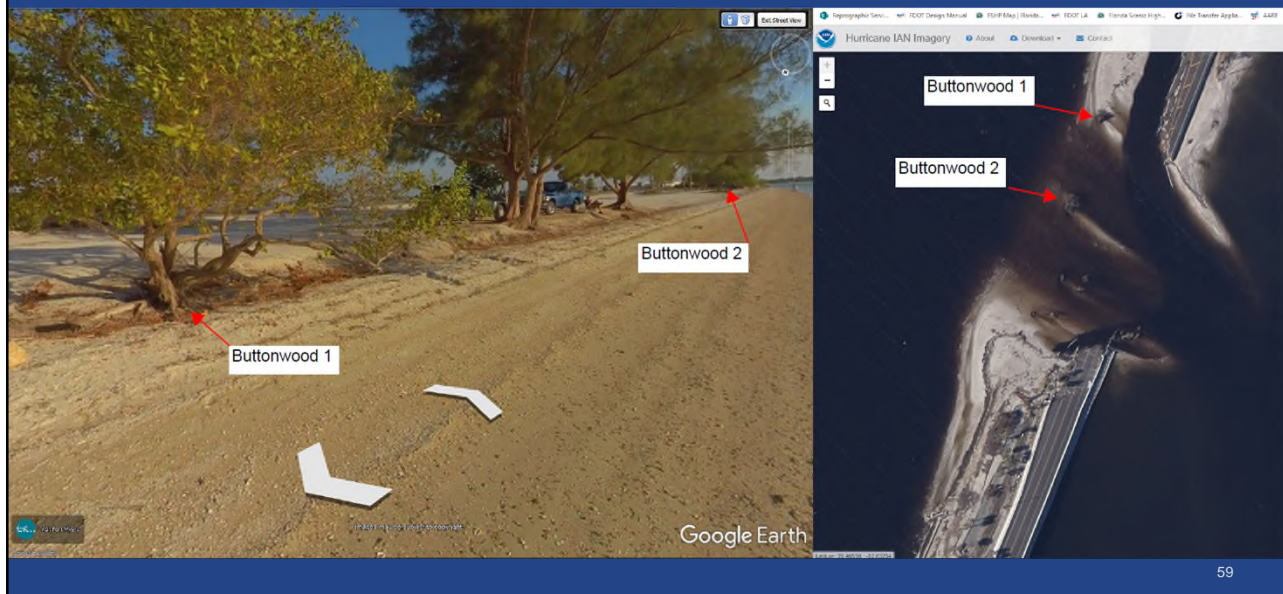


TRANSPORTATION  
SYMPOSIUM

58

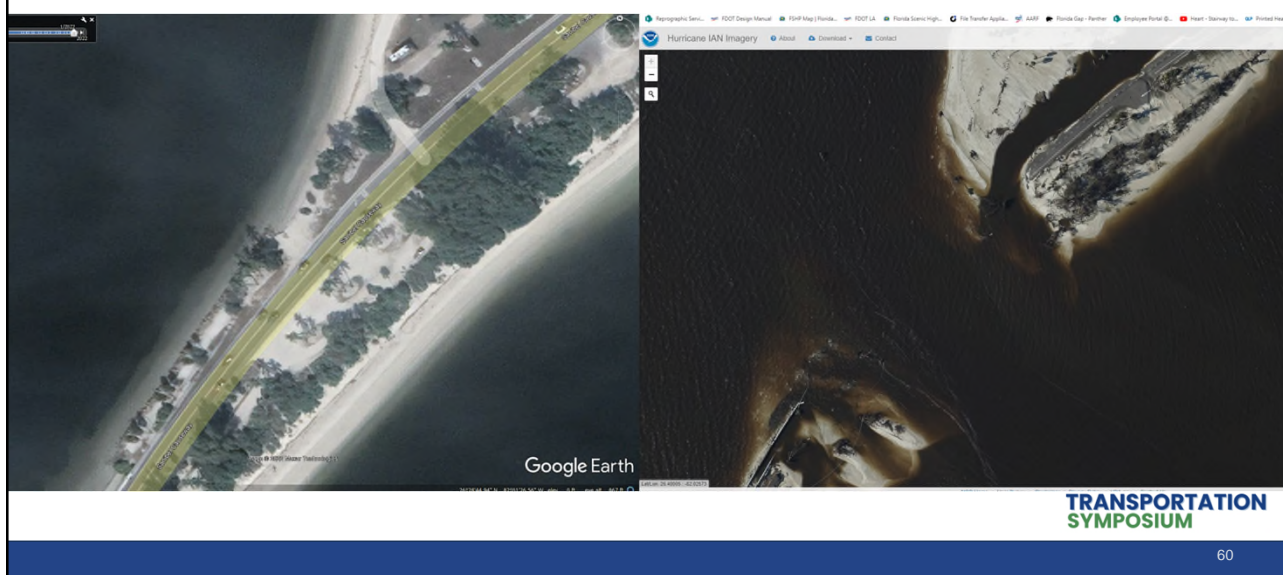
58

## Buttonwood – Sanibel Causeway



59

## Sanibel Causeway – Hurricane Ian



60





61



62





63



64





65




66









67

**Contact Us** 

**Dean Stoddart**  
 FDOT State  
 Transportation  
 Landscape Architect  
 605 Suwannee St.  
 Mail Station 40  
 Tallahassee, FL 32399  
[dean.stoddart@dot.statefl.us](mailto:dean.stoddart@dot.statefl.us)



  
 Real Places. Real Stories.  
[FloridaScenicHighways.com](http://FloridaScenicHighways.com)


  
  



**TRANSPORTATION**  
**SYMPOSIUM**

68




 June 19 - 20, 2025  
 Hollywood, FL





Please be sure to **certify your attendance** before leaving this event or no later than **Monday, June 30**, in order to receive PDH/CEC. Detailed instructions are available on the Transportation Symposium website.

Transportation Symposium Website



SCAN ME

