


June 19 - 20, 2025
Hollywood, FL




**TRANSPORTATION
SYMPOSIUM**

PD&E Process Roadmap

Catherine Bradley, PE
Lauren Boes, PE

Transportation Symposium
Website



SCAN ME

1

Safety Message



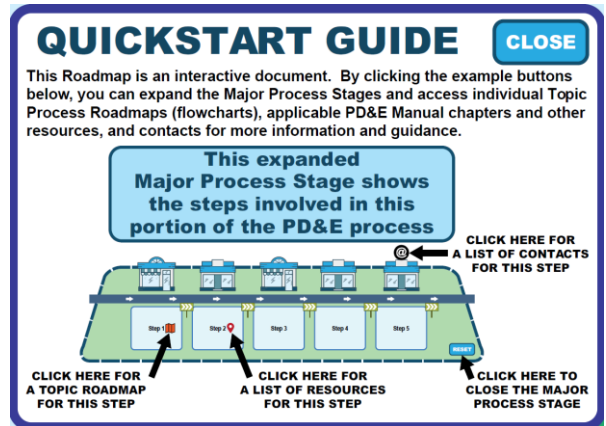
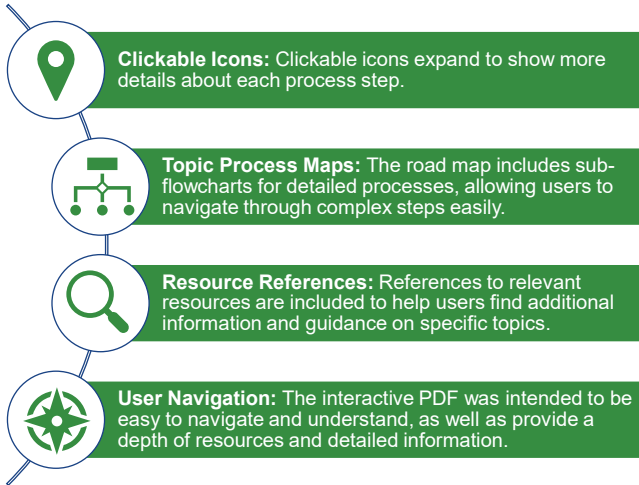
Better Late Than Never

**TRANSPORTATION
SYMPOSIUM**

2

2

Interactive Document Features



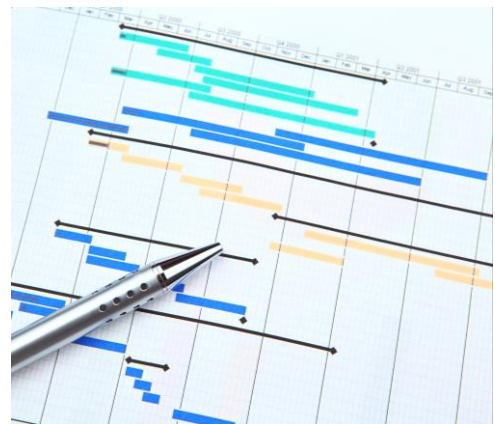
TRANSPORTATION
SYMPOSIUM

5

5

How the Roadmap was Developed

- ▮ Built from project schedules as the framework.
- ▮ Looked to identify the most common pathway for PD&E projects, while still recognizing the many unique aspects that can occur within the PD&E process.
- ▮ The roadmap provides a sense of order to the PD&E Manual and process since the Manual itself isn't published in sequential order.
- ▮ There is no "one-size-fits-all" model for durations of each step because every project is different. As such, durations were not included.

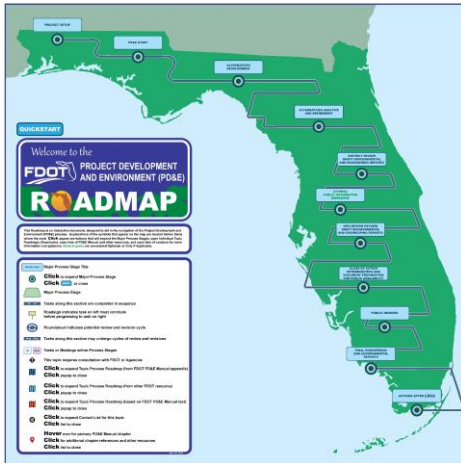


TRANSPORTATION
SYMPOSIUM

6

6

Interactive PD&E Roadmap – Overview



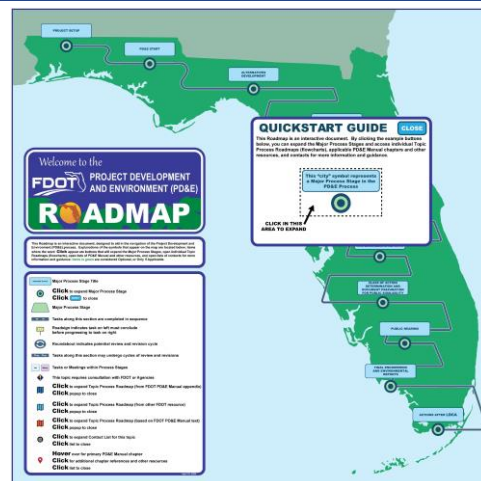
- 📖 The Quickstart Guide
- 📖 Disclaimer & Legend
- 📖 Roadmap Components
- 📖 PD&E Process Stages
- 📖 Demo and Q&A

TRANSPORTATION
SYMPOSIUM

7

Interactive PD&E Roadmap – Quickstart Guide

- 📖 The Quickstart Guide is visible when you open the Roadmap

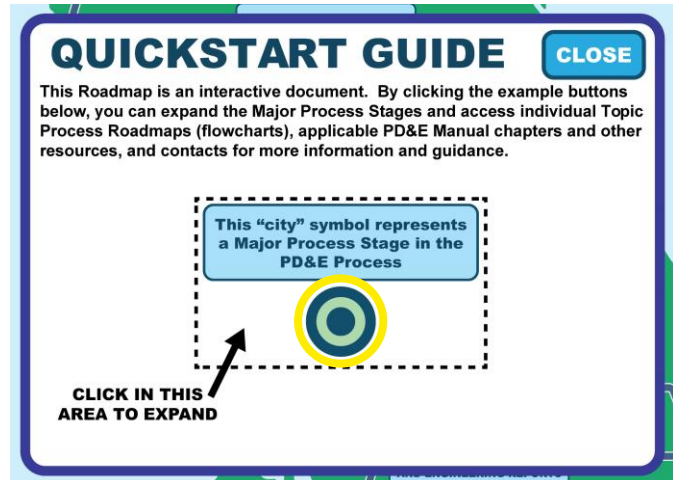


TRANSPORTATION
SYMPOSIUM

8

Interactive PD&E Roadmap – Quickstart Guide

- The “city” symbol represents the Major Process Stage in the FDOT PD&E process.



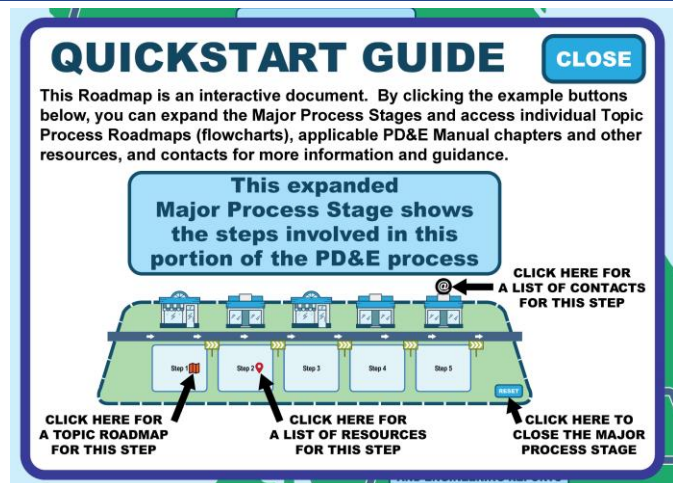
TRANSPORTATION
SYMPOSIUM

9

9

Interactive PD&E Roadmap – Quickstart Guide

- The “city” symbol represents the Major Process Stage in the FDOT PD&E process.



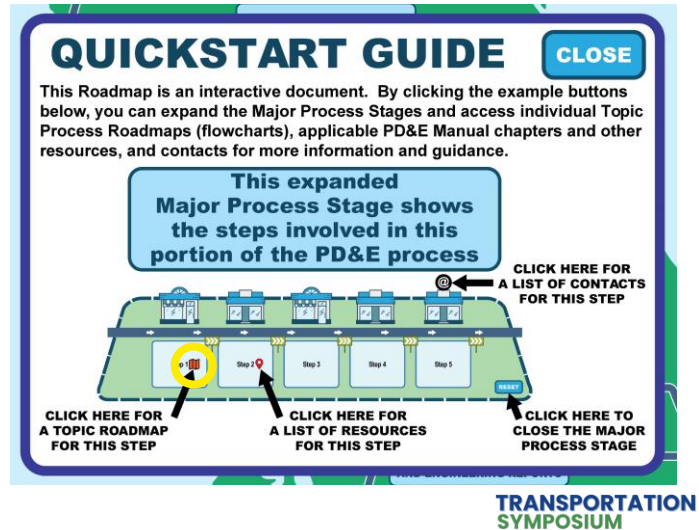
TRANSPORTATION
SYMPOSIUM

10

10

Interactive PD&E Roadmap – Quickstart Guide

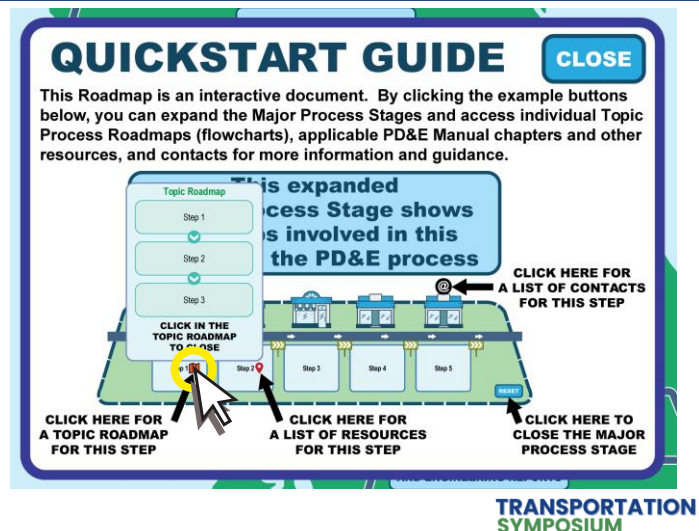
- The folded roadmap icon indicates there is a Topic Roadmap flowchart available.



11

Interactive PD&E Roadmap – Quickstart Guide

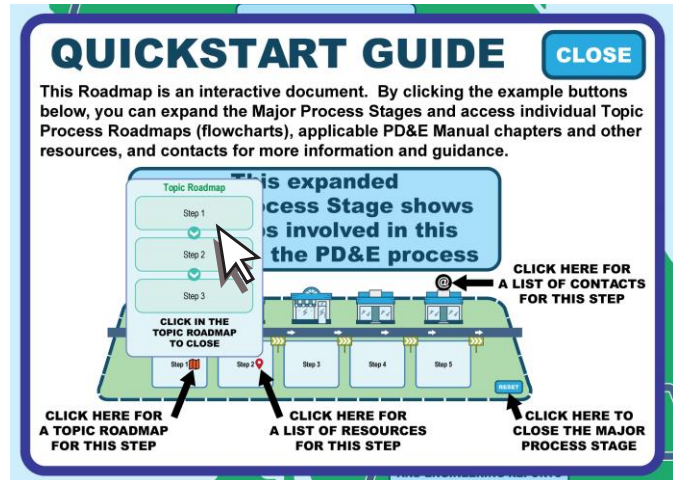
- The folded roadmap icon indicates there is a Topic Roadmap flowchart available.
- Clicking on the roadmap icon expands the Topic Roadmap flowchart.



12

Interactive PD&E Roadmap – Quickstart Guide

- 📖 The folded roadmap icon indicates there is a Topic Roadmap flowchart available.
- 📖 Clicking on the roadmap icon expands the Topic Roadmap flowchart.
- 📖 Click anywhere on the Topic Roadmap flowchart to close.



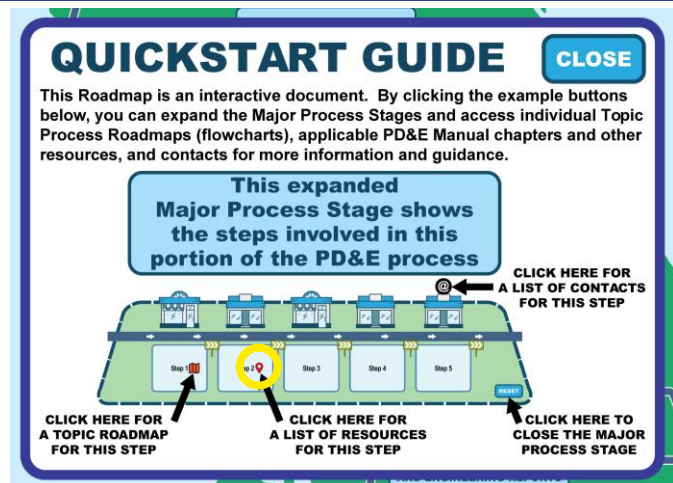
TRANSPORTATION
SYMPOSIUM

13

13

Interactive PD&E Roadmap – Quickstart Guide

- 📖 The waypoint icon indicates there is a list of resource references available.



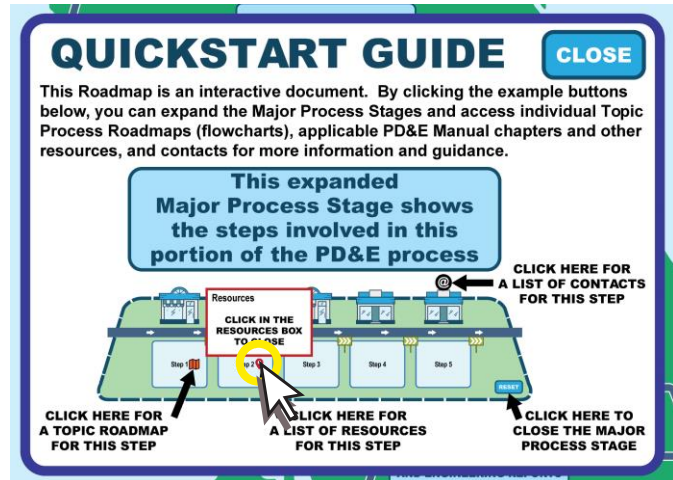
TRANSPORTATION
SYMPOSIUM

14

14

Interactive PD&E Roadmap – Quickstart Guide

- 📖 The waypoint icon indicates there is a list of resource references available.
- 📖 Click on the waypoint icon to expand the list of resources.



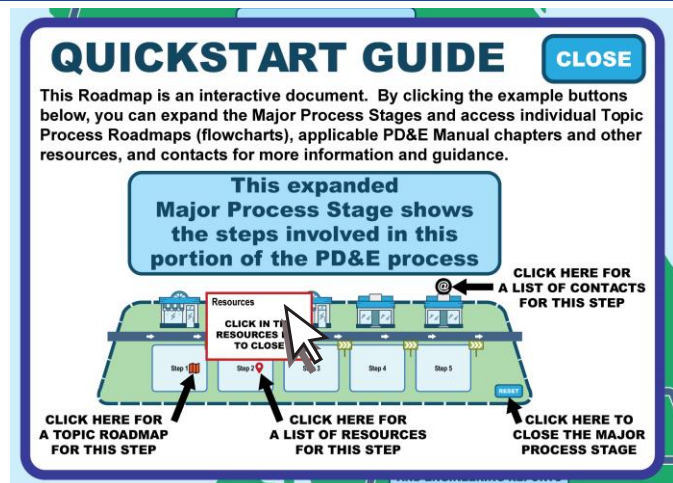
TRANSPORTATION
SYMPOSIUM

15

15

Interactive PD&E Roadmap – Quickstart Guide

- 📖 The waypoint icon indicates there is a list of resource references available.
- 📖 Click on the waypoint icon to expand the list of resources.
- 📖 Click anywhere on the resource list to close.



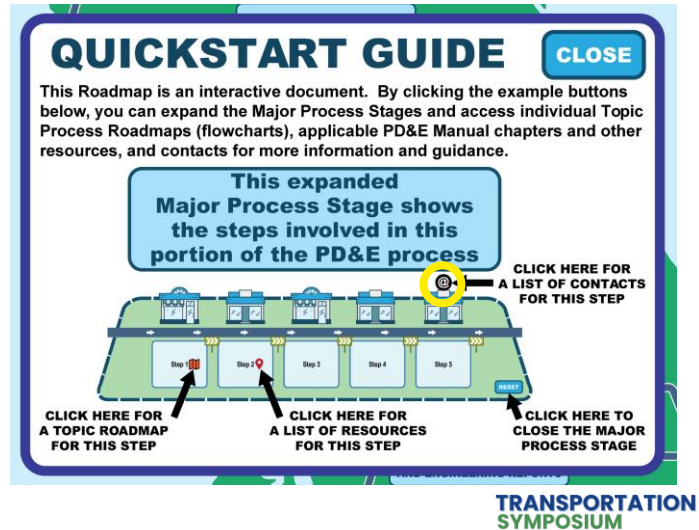
TRANSPORTATION
SYMPOSIUM

16

16

Interactive PD&E Roadmap – Quickstart Guide

- The @ icon indicates a list of FDOT contacts is available.

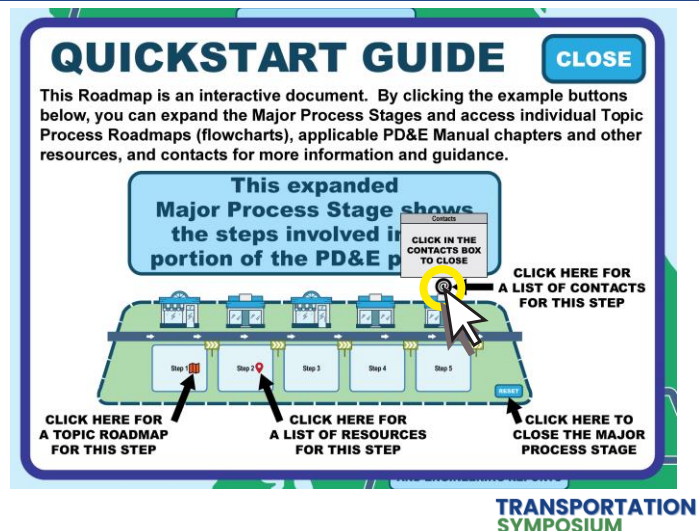


17

17

Interactive PD&E Roadmap – Quickstart Guide

- The @ icon indicates a list of FDOT contacts is available.
- Click on the @ icon to expand a list of FDOT contacts.

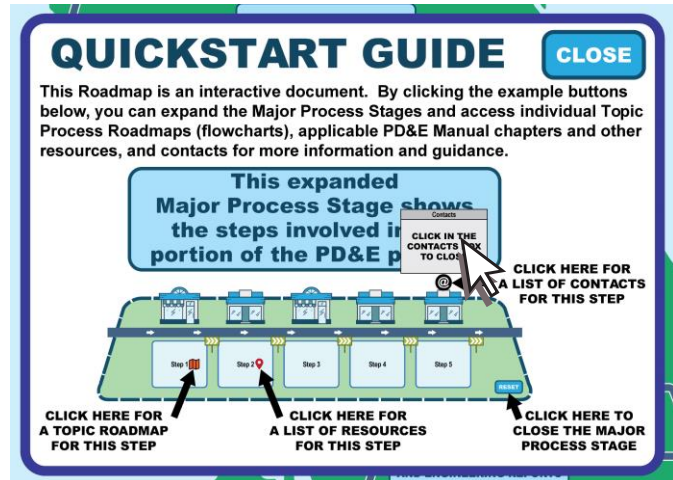


18

18

Interactive PD&E Roadmap – Quickstart Guide

- ❏ The @ icon indicates a list of FDOT contacts is available.
- ❏ Click on the @ icon to expand a list of FDOT contacts.
- ❏ Click anywhere on the contact list to close.



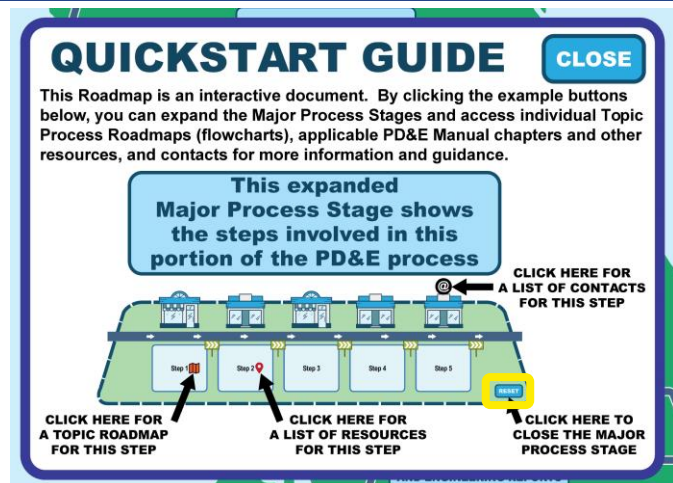
TRANSPORTATION
SYMPOSIUM

19

19

Interactive PD&E Roadmap – Quickstart Guide

- ❏ Each Major Process Stage will have a Reset button.



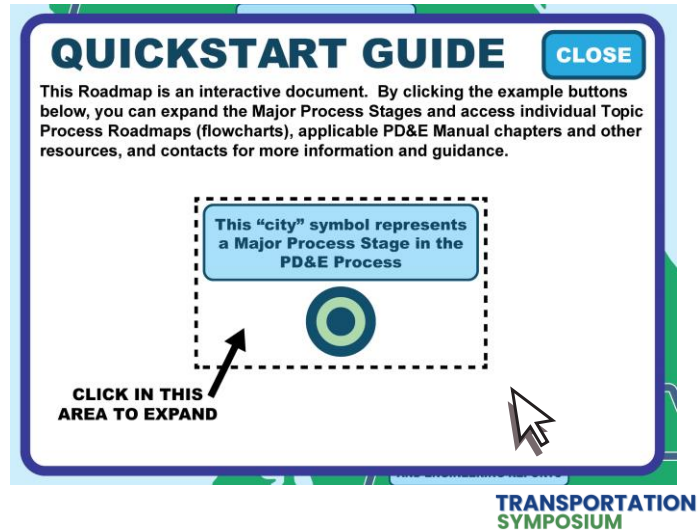
TRANSPORTATION
SYMPOSIUM

20

20

Interactive PD&E Roadmap – Quickstart Guide

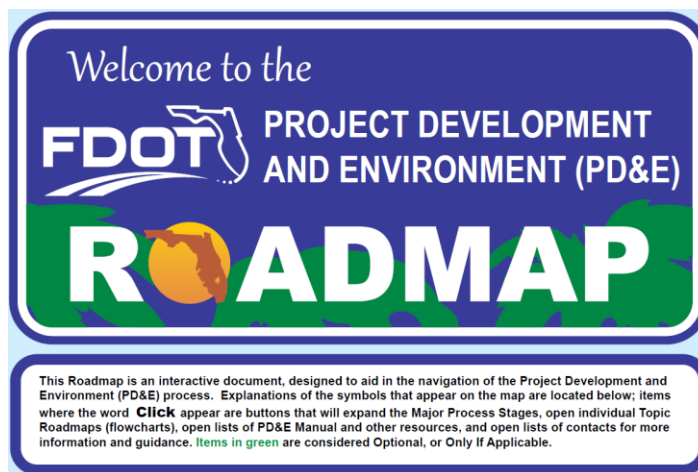
- Each Major Process Stage will have a Reset button.
- Clicking on the Reset button will return that stage to its unexpanded view.



21

21

Interactive PD&E Roadmap – Disclaimer



TRANSPORTATION SYMPOSIUM

22

22

Interactive PD&E Roadmap – Legend

Major Process Stage Title

Click to expand Major Process Stage
Click **close** to close

Major Process Stage

Tasks along this section are completed in sequence

Roadsign indicates task on left must conclude before progressing to task on right

Roundabout indicates potential review and revision cycle

Tasks along this section may undergo cycles of review and revisions

Tasks or Meetings within Process Stages

This topic requires consultation with FDOT or Agencies

Click to expand Topic Process Roadmap (from FDOT PD&E Manual appendix)
Click popup to close

Click to expand Topic Process Roadmap (from other FDOT resource)
Click popup to close

Click to expand Topic Process Roadmap (based on FDOT PD&E Manual text)
Click popup to close

Click to expand Contact List for this topic
Click list to close

Hover over for primary PD&E Manual chapter
Click for additional chapter references and other resources
Click list to close

TRANSPORTATION
SYMPOSIUM

23

23

Interactive PD&E Roadmap – Project Setup

QUICKSTART

Welcome to the
FDOT PROJECT DEVELOPMENT AND ENVIRONMENT (PD&E)
ROADMAP

Click to expand Major Process Stage
 Click **close** to close

Tasks along this section are completed in sequence

Roadsign indicates task on left must conclude before progressing to task on right

Roundabout indicates potential review and revision cycle

Tasks along this section may undergo cycles of review and revisions

Tasks or Meetings within Process Stages

This topic requires consultation with FDOT or Agencies

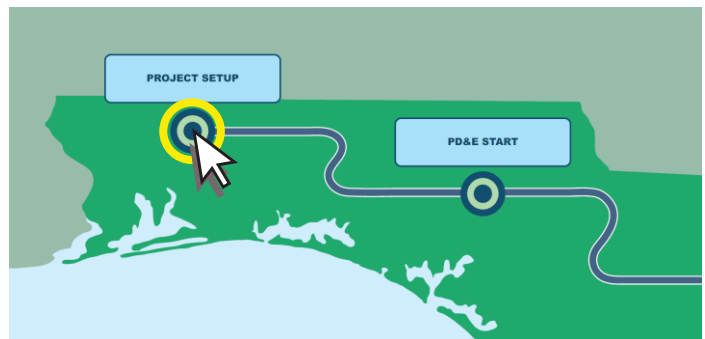
Click to expand Topic Process Roadmap (from FDOT PD&E Manual appendix)
Click popup to close

Click to expand Topic Process Roadmap (from other FDOT resource)
Click popup to close

Click to expand Topic Process Roadmap (based on FDOT PD&E Manual text)
Click popup to close

Click to expand Contact List for this topic
Click list to close

Hover over for primary PD&E Manual chapter
Click for additional chapter references and other resources
Click list to close

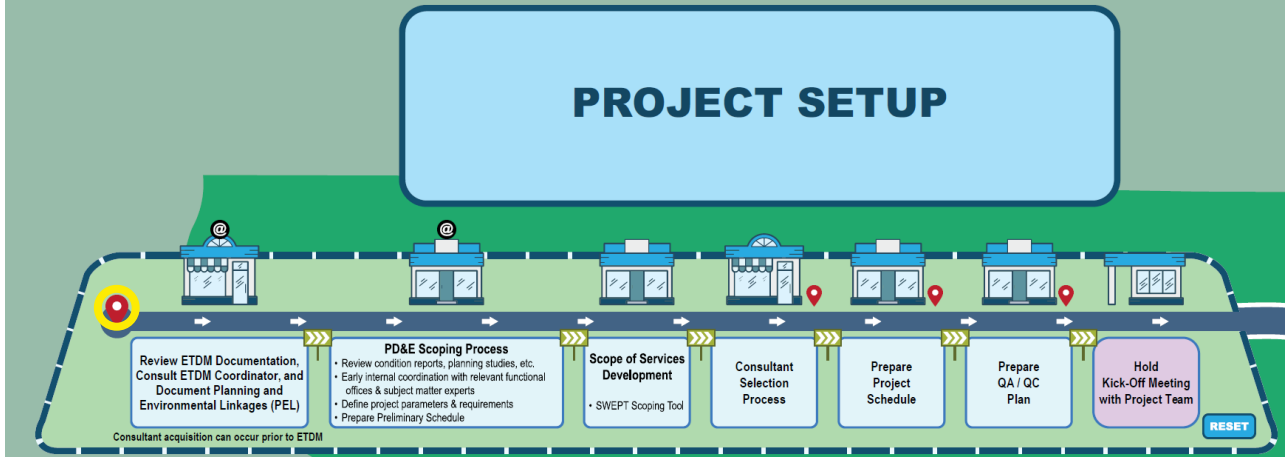


TRANSPORTATION
SYMPOSIUM

24

24

Interactive PD&E Roadmap – Project Setup

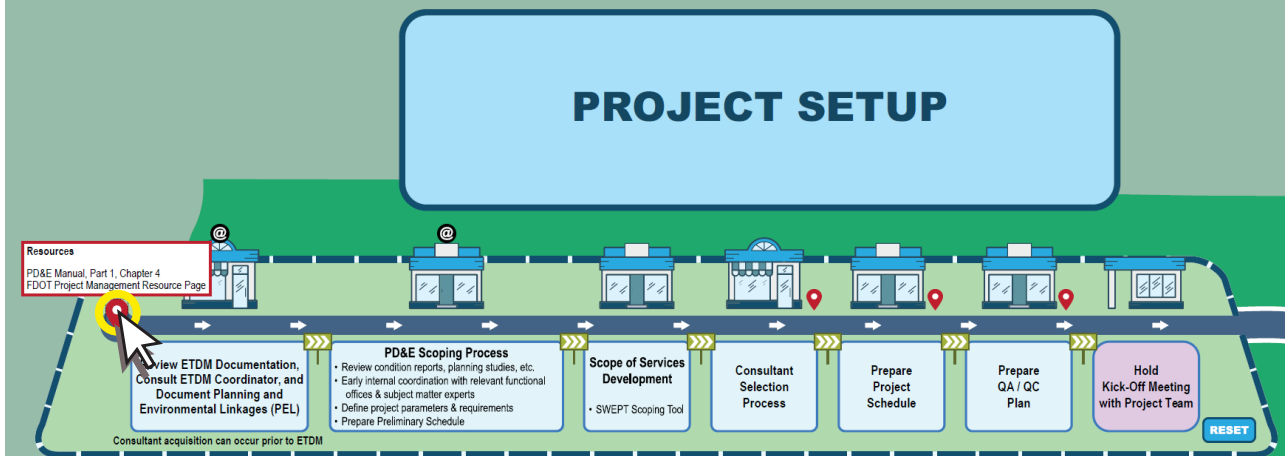


TRANSPORTATION
SYMPOSIUM

25

25

Interactive PD&E Roadmap – Project Setup

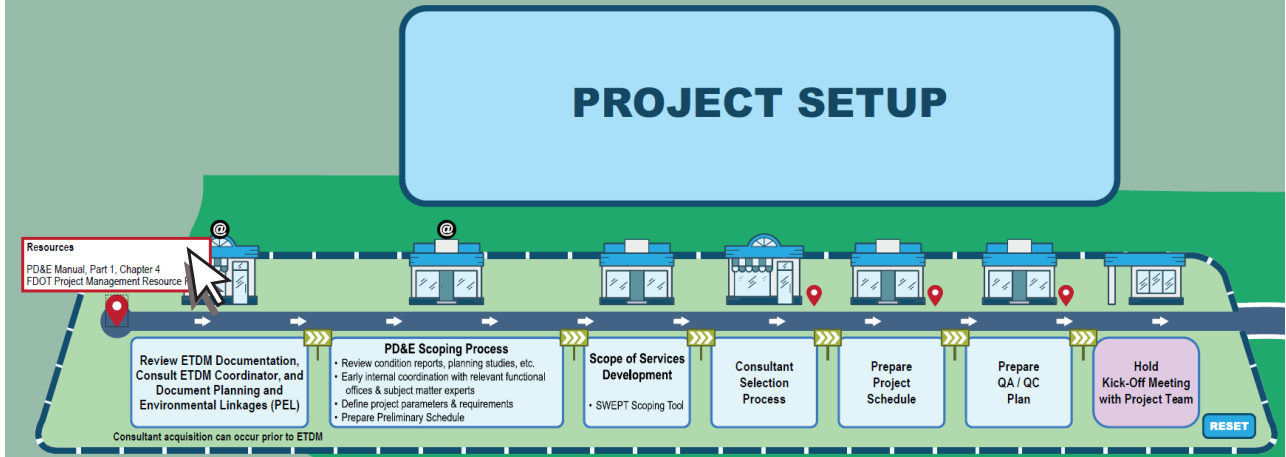


TRANSPORTATION
SYMPOSIUM

26

26

Interactive PD&E Roadmap – Project Setup

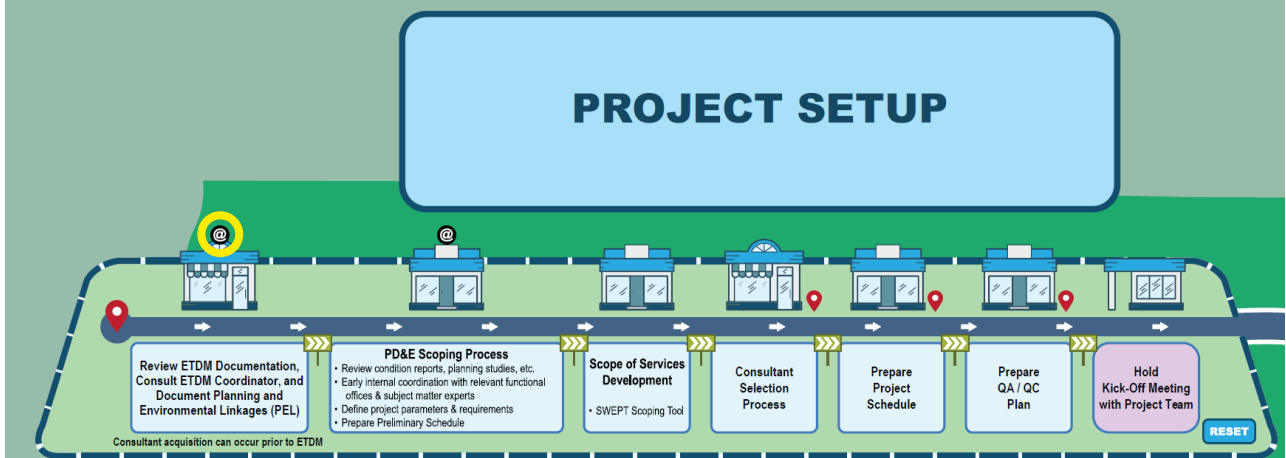


TRANSPORTATION
SYMPOSIUM

27

27

Interactive PD&E Roadmap – Project Setup



TRANSPORTATION
SYMPOSIUM

28

28

Interactive PD&E Roadmap – Project Setup

Office	ETDM
District 1	Nikki Gilmer - Nikki.Gilmer@dot.state.fl.us
District 2	Terri Newman - Terri.Newman@dot.state.fl.us Aja Stoppe - Aja.Stoppe@dot.state.fl.us
District 3	Toni White - Toni.White@dot.state.fl.us
District 4	Shandra Davis - Shandra.Davis@dot.state.fl.us
District 5	Casey Lyon - Casey.Lyon@dot.state.fl.us Letitia Neal - letitia.neal@dot.state.fl.us
District 6	Dat Huynh - Dat.Huynh@dot.state.fl.us
District 7	TBD
FTE	TBD
OEM	Johnathon Bennett - jonathon.bennett@dot.state.fl.us Avril Wood-McGrath - avril.wood-mcgrath@dot.state.fl.us

PROJECT SETUP

Review ETDM Documentation,
Consult ETDM Coordinator, and
Document Planning and
Environmental Linkages (PEL)

Consultant acquisition can occur prior to ETDM

PD&E Scoping Process

- Review condition reports, planning studies, etc.
- Early internal coordination with relevant functional offices & subject matter experts
- Define project parameters & requirements
- Prepare Preliminary Schedule

**Scope of Services
Development**

- SWEPT Scoping Tool

**Consultant
Selection
Process**

**Prepare
Project
Schedule**

**Prepare
QA / QC
Plan**

**Hold
Kick-Off Meeting
with Project Team**

RESET

TRANSPORTATION
SYMPOSIUM

29

29

Interactive PD&E Roadmap – Project Setup

Office	ETDM
District 1	Nikki Gilmer - Nikki.Gilmer@dot.state.fl.us
District 2	Terri Newman - Terri.Newman@dot.state.fl.us Aja Stoppe - Aja.Stoppe@dot.state.fl.us
District 3	Toni White - Toni.White@dot.state.fl.us
District 4	Shandra Davis - Shandra.Davis@dot.state.fl.us
District 5	Casey Lyon - Casey.Lyon@dot.state.fl.us Letitia Neal - letitia.neal@dot.state.fl.us
District 6	Dat Huynh - Dat.Huynh@dot.state.fl.us
District 7	TBD
FTE	TBD
OEM	Johnathon Bennett - jonathon.bennett@dot.state.fl.us Avril Wood-McGrath - avril.wood-mcgrath@dot.state.fl.us

PROJECT SETUP

Review ETDM Documentation,
Consult ETDM Coordinator, and
Document Planning and
Environmental Linkages (PEL)

Consultant acquisition can occur prior to ETDM

PD&E Scoping Process

- Review condition reports, planning studies, etc.
- Early internal coordination with relevant functional offices & subject matter experts
- Define project parameters & requirements
- Prepare Preliminary Schedule

**Scope of Services
Development**

- SWEPT Scoping Tool

**Consultant
Selection
Process**

**Prepare
Project
Schedule**

**Prepare
QA / QC
Plan**

**Hold
Kick-Off Meeting
with Project Team**

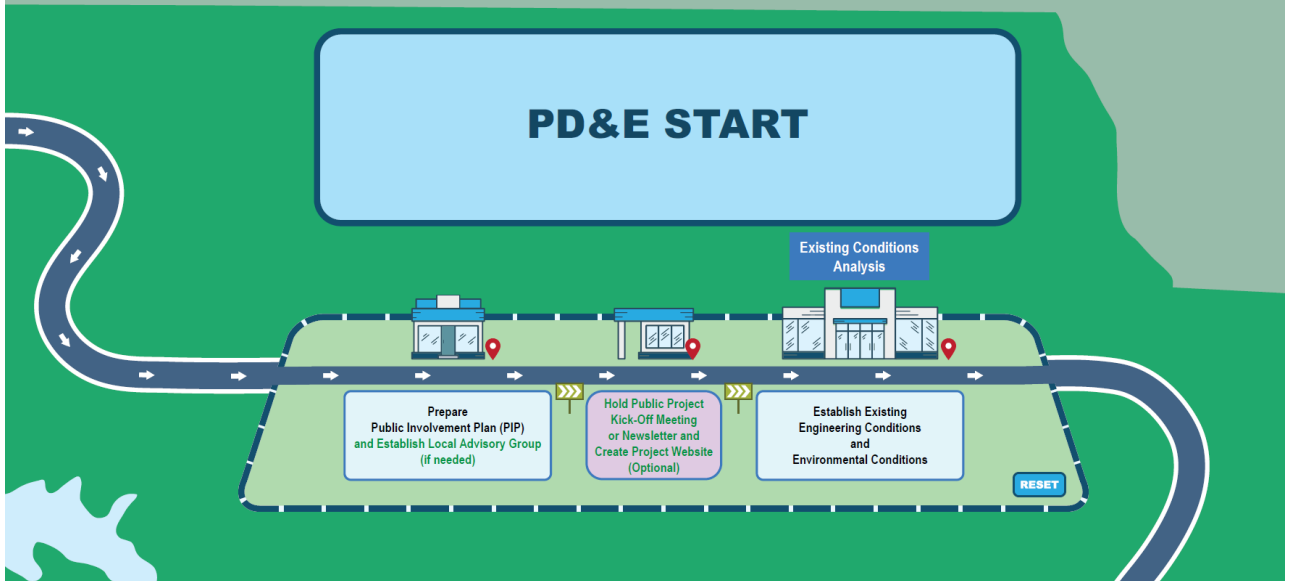
RESET

TRANSPORTATION
SYMPOSIUM

30

30

Interactive PD&E Roadmap – PD&E Start



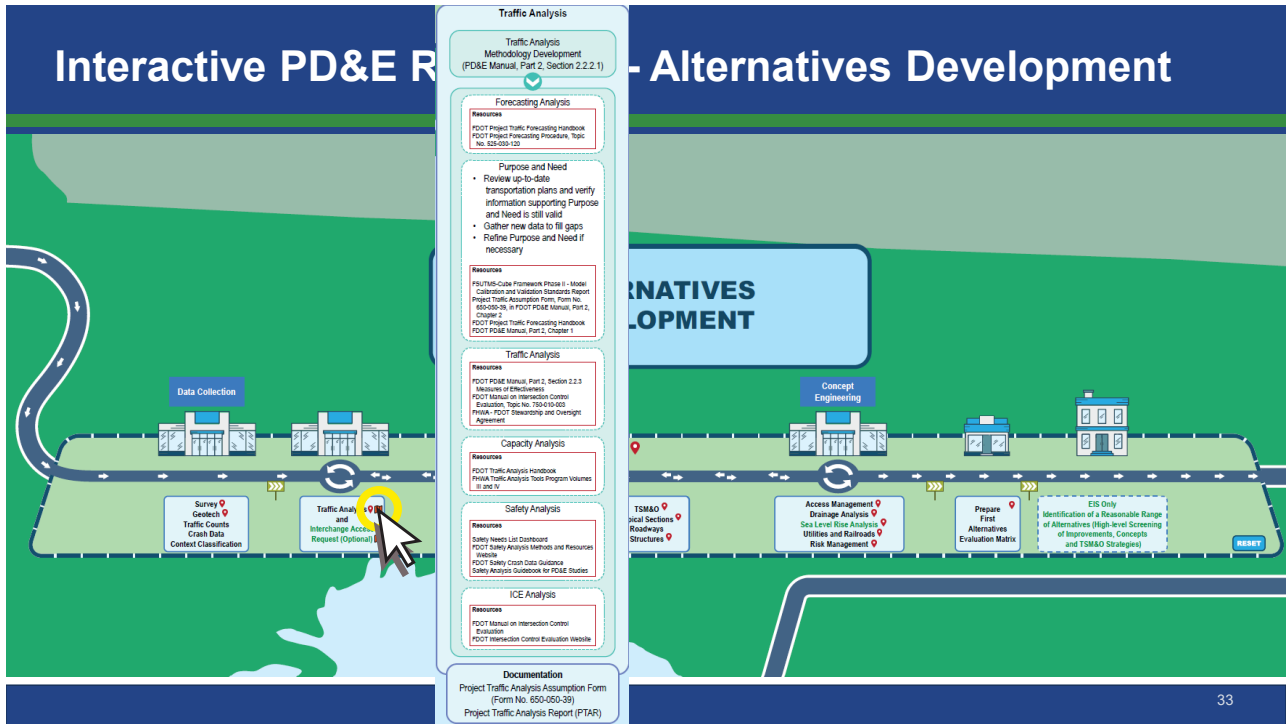
31

Interactive PD&E Roadmap – Alternatives Development

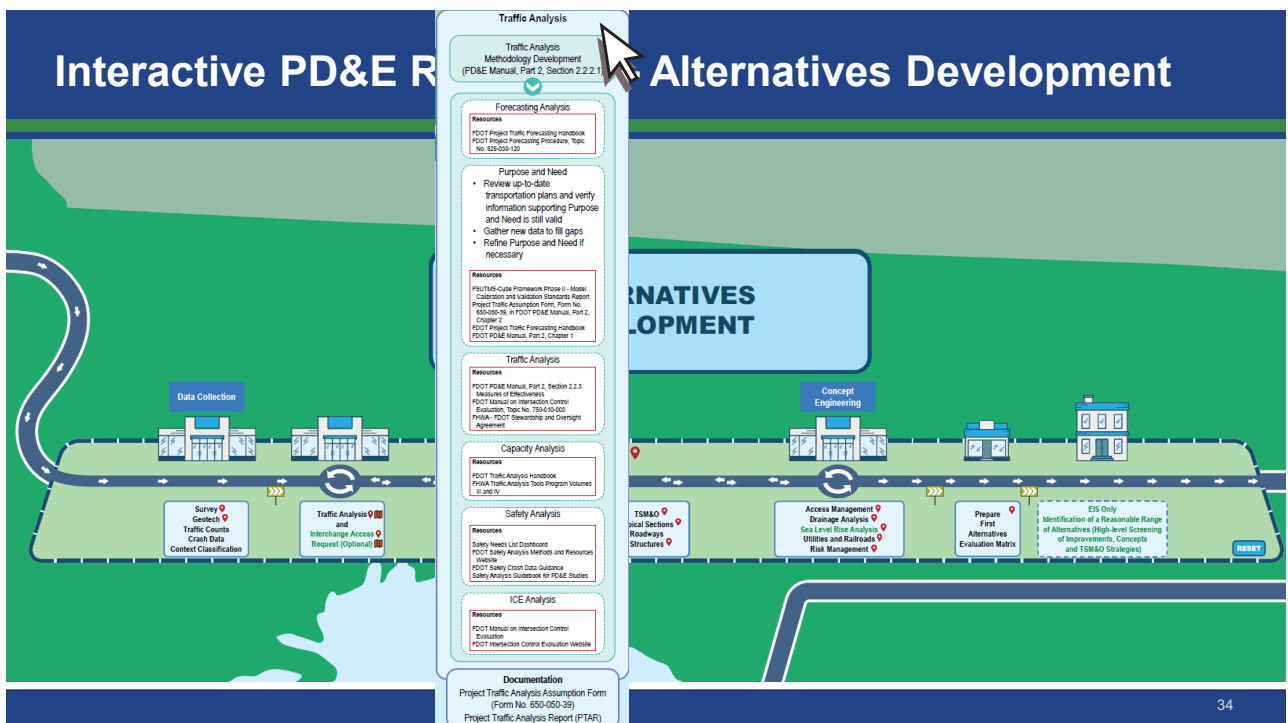


32

32

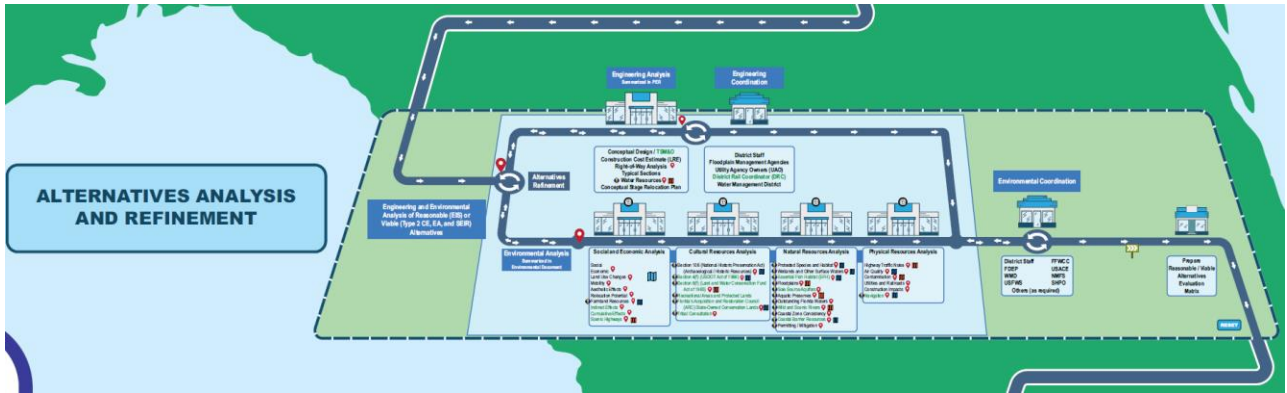


33



34

Interactive PD&E Roadmap – Alternatives Analysis

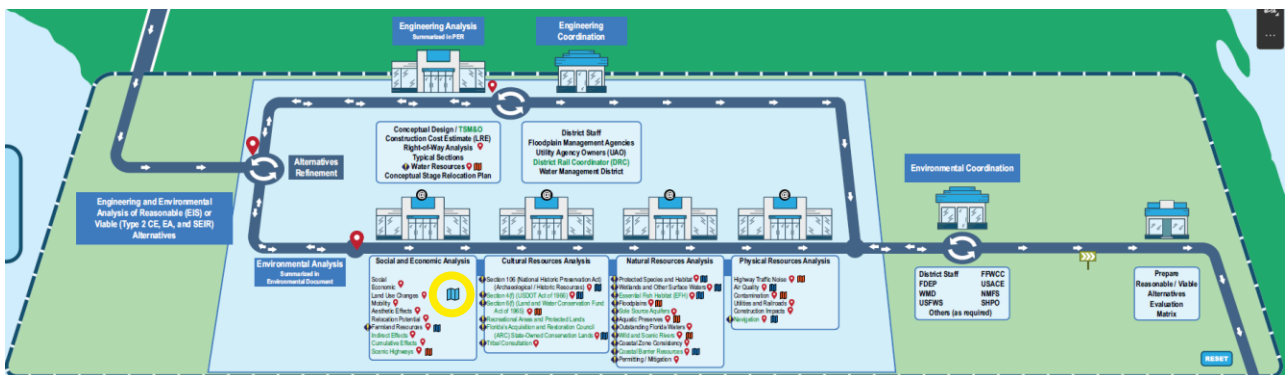


TRANSPORTATION
SYMPOSIUM

35

35

Interactive PD&E Roadmap – Alternatives Analysis

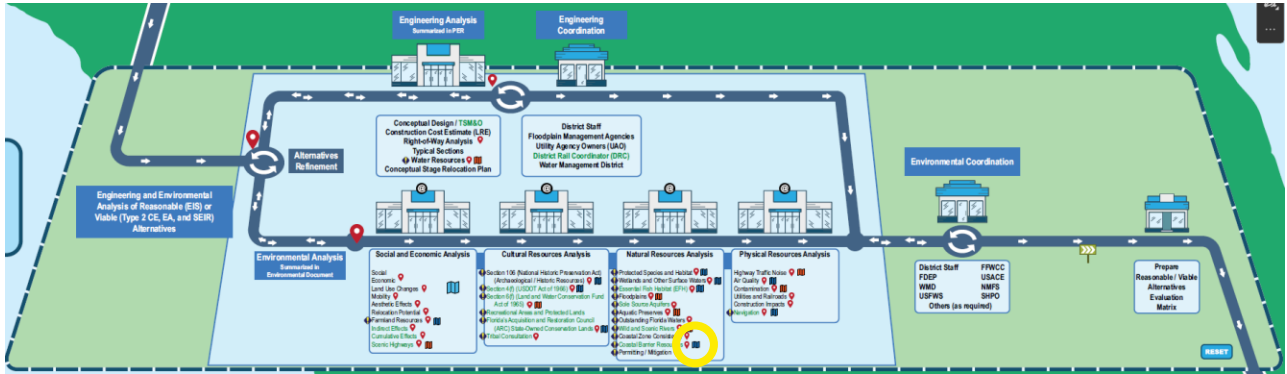


TRANSPORTATION
SYMPOSIUM

36

36

Interactive PD&E Roadmap – Alternatives Analysis

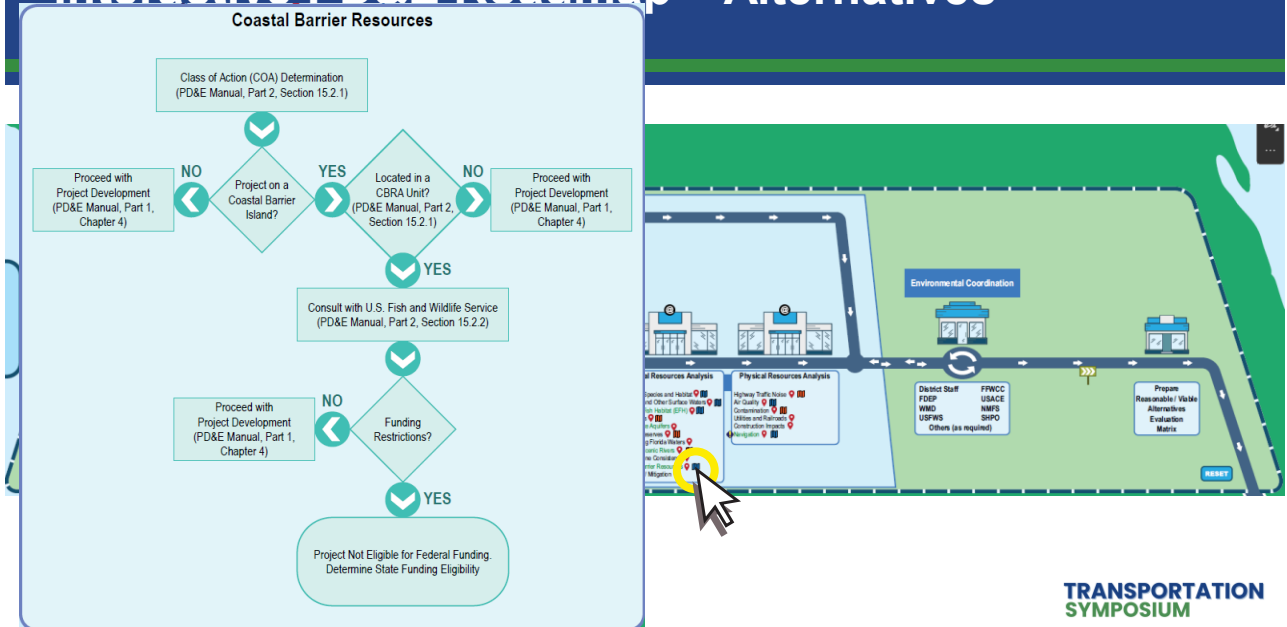


TRANSPORTATION
SYMPOSIUM

39

39

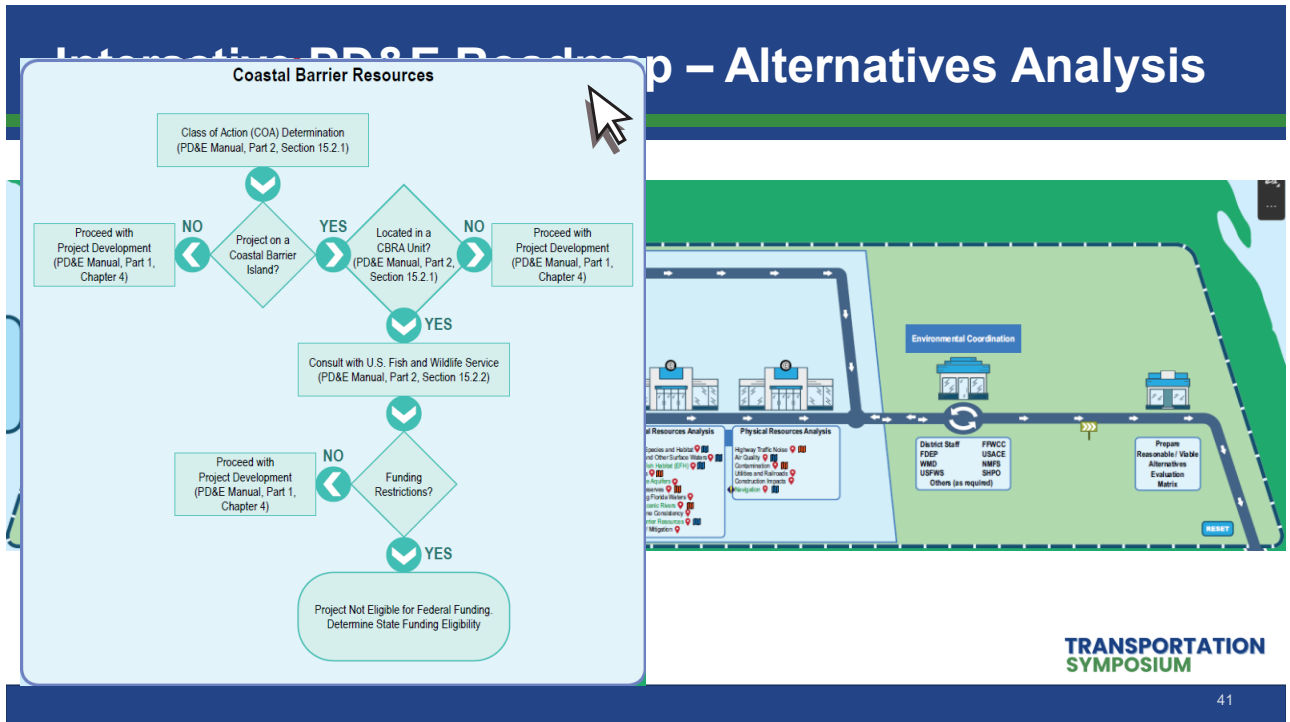
Interactive PD&E Roadmap – Alternatives



TRANSPORTATION
SYMPOSIUM

40

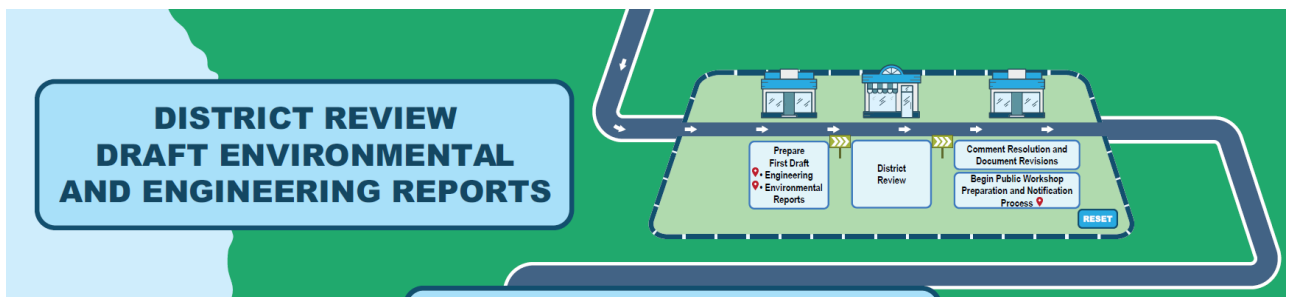
40



41

41

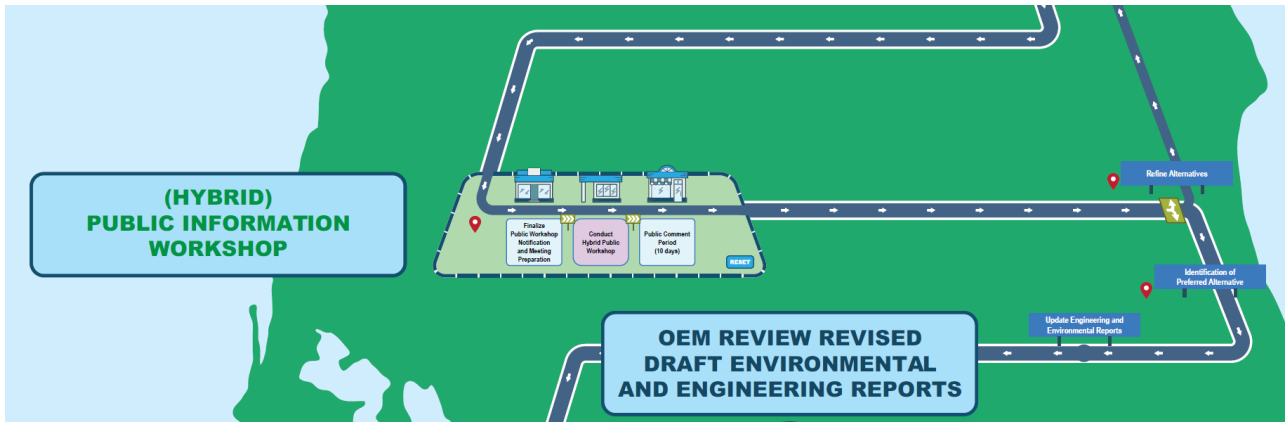
Interactive PD&E Roadmap – Draft Reports



42

42

Interactive PD&E Roadmap – Hybrid Workshop

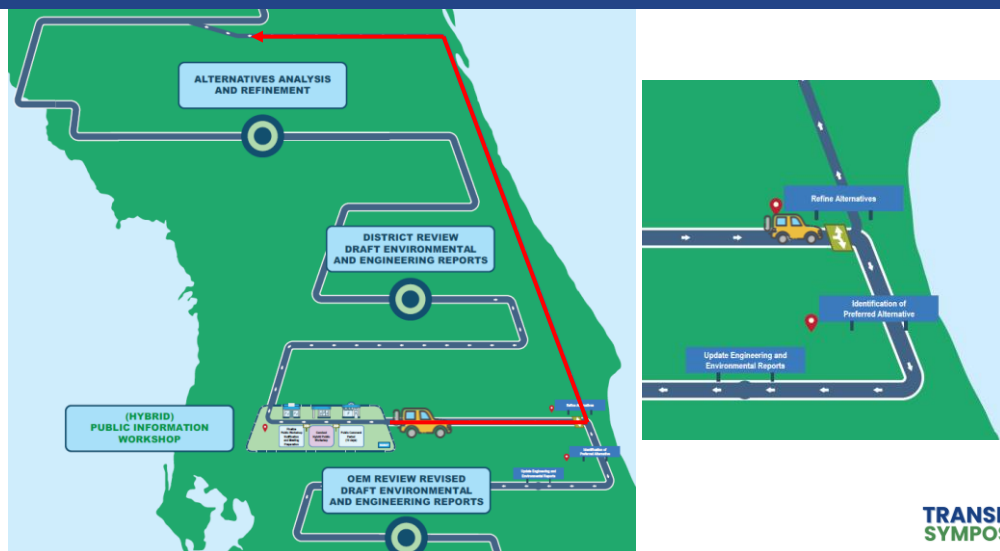


TRANSPORTATION
SYMPOSIUM

43

43

Interactive PD&E Roadmap – Hybrid Workshop



TRANSPORTATION
SYMPOSIUM

44

44

Interactive PD&E Roadmap – Revised Reports

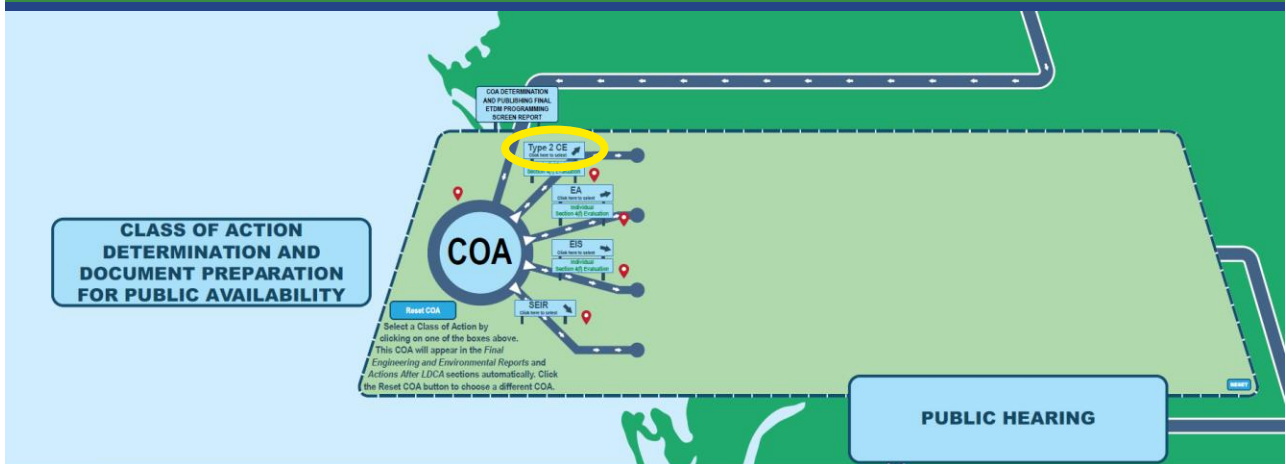


TRANSPORTATION
SYMPOSIUM

45

45

Interactive PD&E Roadmap – Class of Action

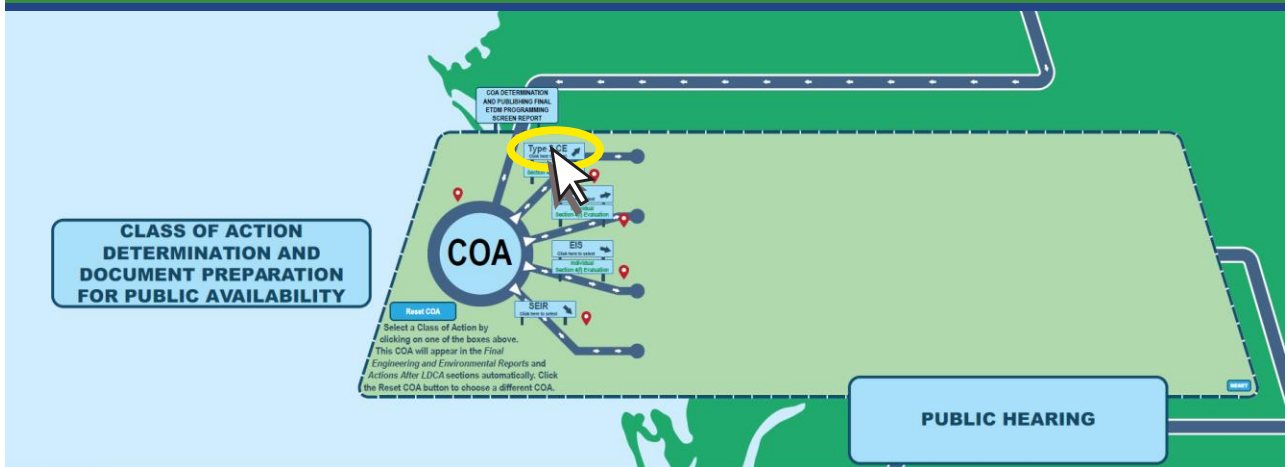


TRANSPORTATION
SYMPOSIUM

46

46

Interactive PD&E Roadmap – Class of Action

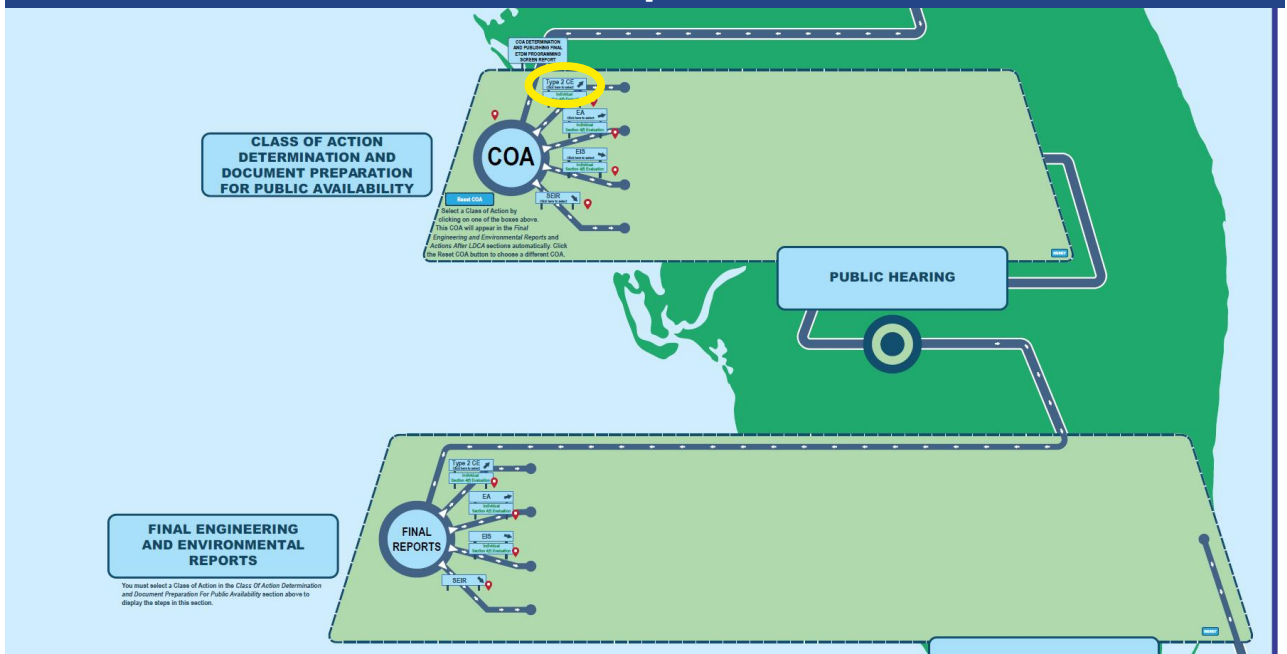


TRANSPORTATION
SYMPOSIUM

47

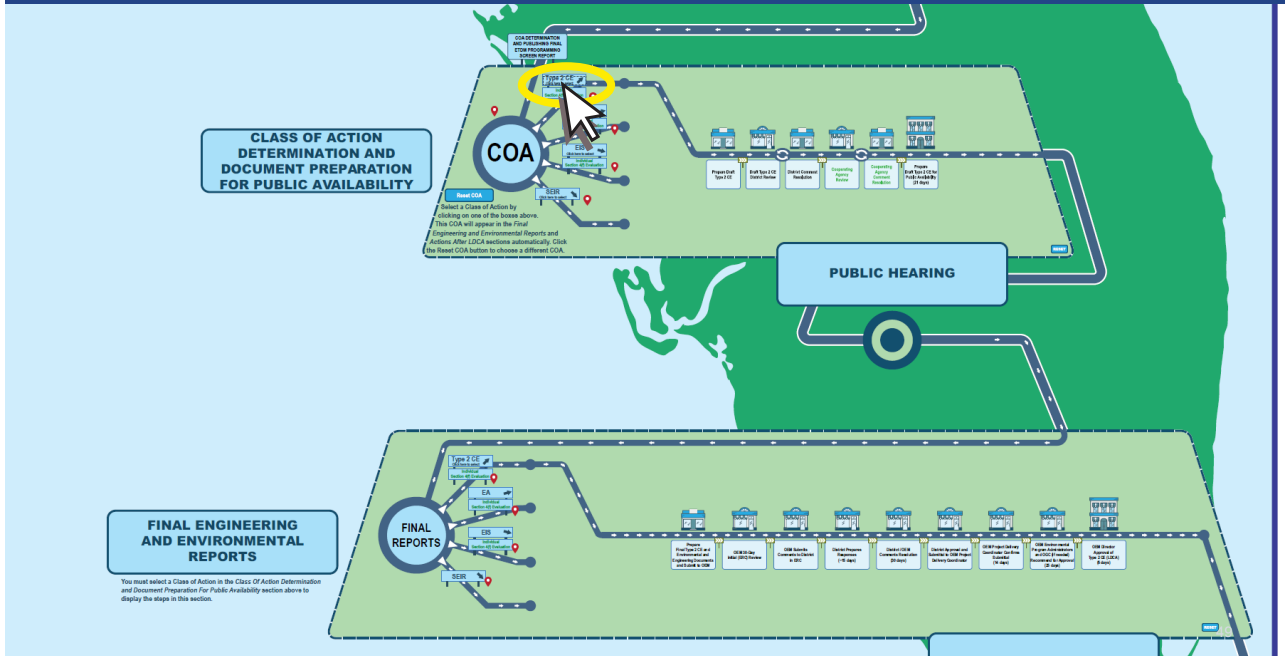
47

Interactive PD&E Roadmap – Class of Action



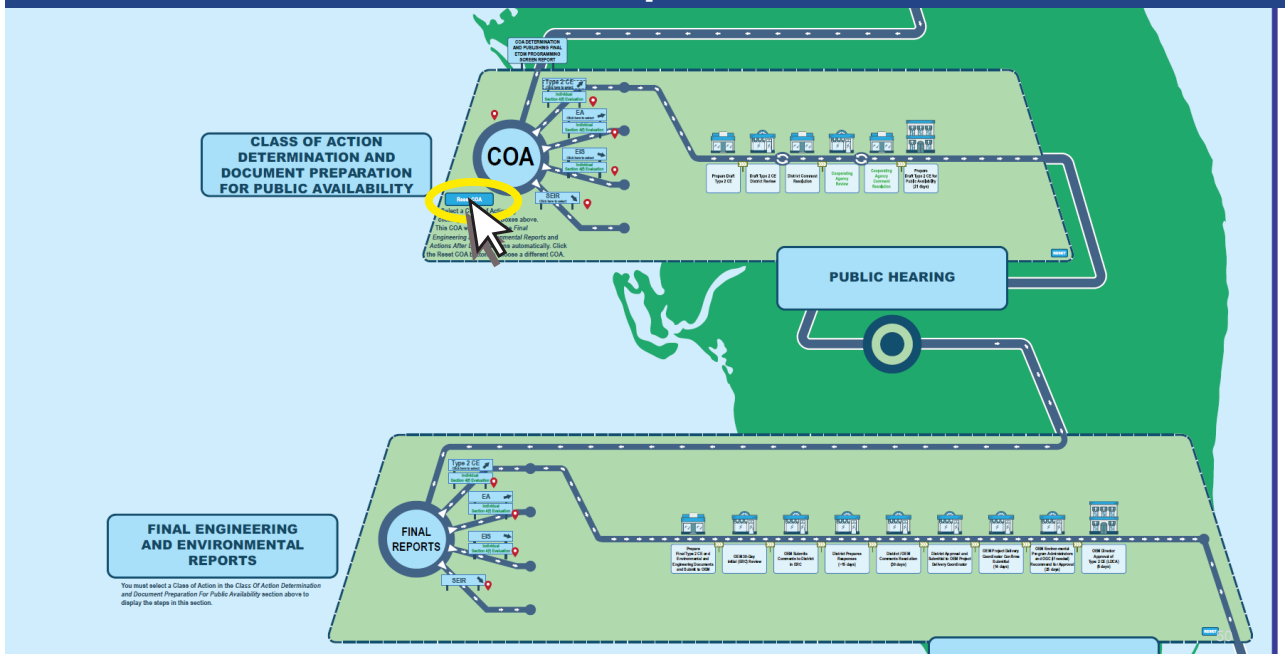
48

Interactive PD&E Roadmap – Class of Action



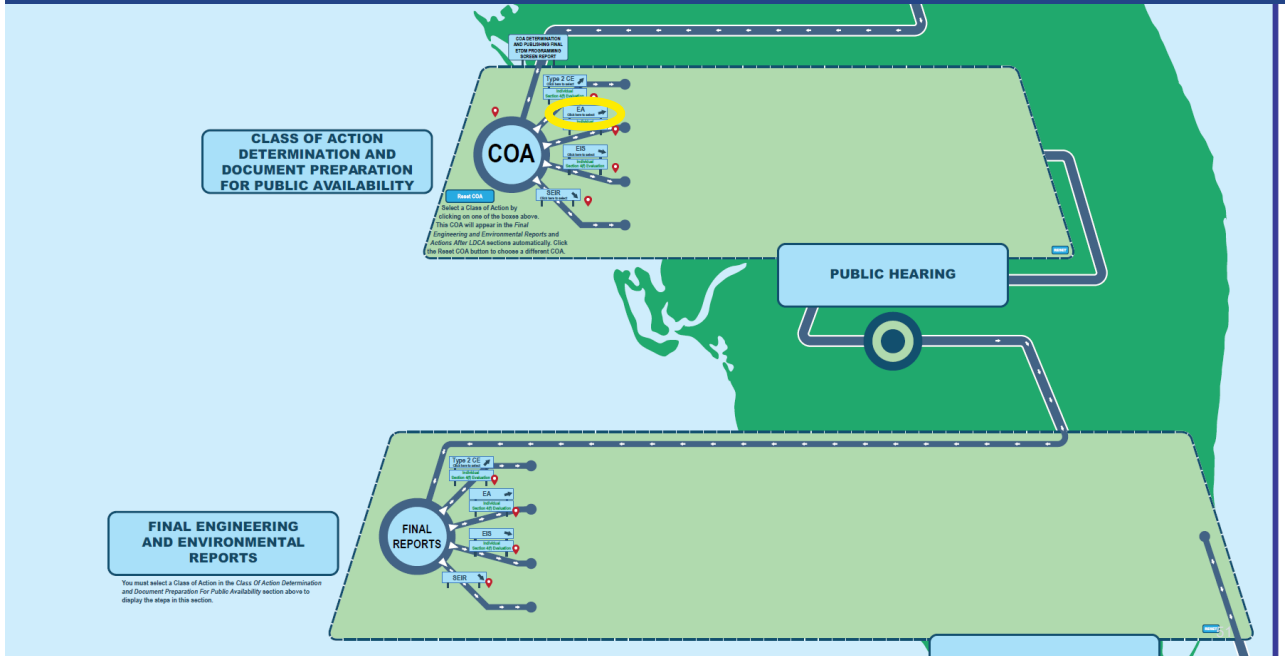
49

Interactive PD&E Roadmap – Class of Action



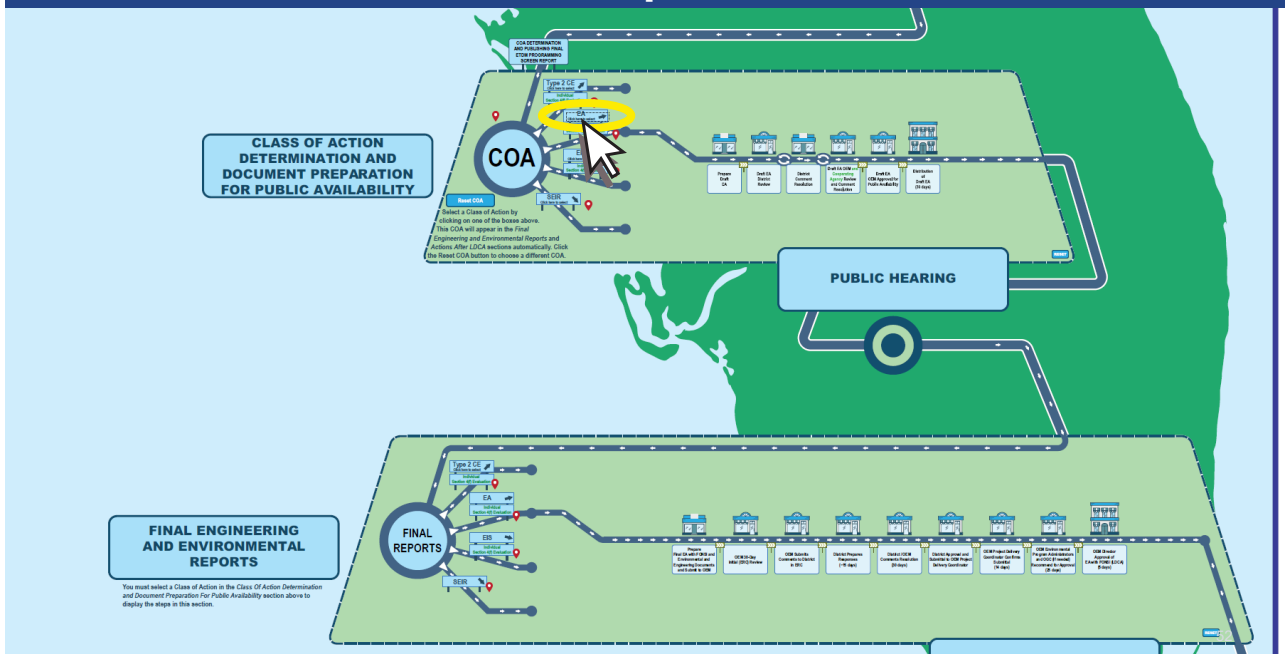
50

Interactive PD&E Roadmap – Class of Action



51

Interactive PD&E Roadmap – Class of Action



52

Frequent Updates

- 📖 Can be saved/downloaded, but frequent updates are expected.
- 📖 Anticipate updating every quarter.
- 📖 Contacts change frequently. Coordinate with your District or OEM for questions as appropriate.

TRANSPORTATION
SYMPOSIUM

57

Demo and Q&A

- 📁 PD&E Roadmap Link – Live Session Only
- 📁 <https://www.fdot.gov/environment/pde-manual/pdeman-current>



Adobe Acrobat
Document



Foxit PDF Editor
Document

TRANSPORTATION
SYMPOSIUM

58

58

Contact Us



Catherine Bradley

Catherine.Bradley@dot.state.fl.us




Lauren Boes

Lauren.Boes@atkinsrealis.com

**TRANSPORTATION
SYMPOSIUM**

59

59

 June 19 - 20, 2025

 Hollywood, FL



**TRANSPORTATION
SYMPOSIUM**



Please be sure to **certify your attendance** before leaving this event or no later than **Monday, June 30**, in order to receive PDH/CEC. Detailed instructions are available on the Transportation Symposium website.

Transportation Symposium
Website



SCAN ME

60

60