

📍 Orlando, FL

📅 November 7-8, 2024



# 2024 TRANSPORTATION SYMPOSIUM

## Planning Consistency in PD&E



**Jennifer Marshall, PE**

Director, Office of Environmental Management

[jennifer.marshall@dot.state.fl.us](mailto:jennifer.marshall@dot.state.fl.us)

**Nicholas Reid, AICP**

OEM Consultant Support

[Nicholas.reid@dot.state.fl.us](mailto:Nicholas.reid@dot.state.fl.us)



# What is Planning Consistency



# What is Planning Consistency?

**Planning Documents (LRTP, STIP, TIP)**

# The Magic Words (Terms to Know)

## MPO Developed

### Long Range Transportation Plan (LRTP)

Future goals, strategies and  
projects to achieve vision,  
Cost Feasible Plan

5 Year Update Cycle

### Transportation Improvement Program (TIP)

Programmed investment  
priorities

Annual Update Cycle

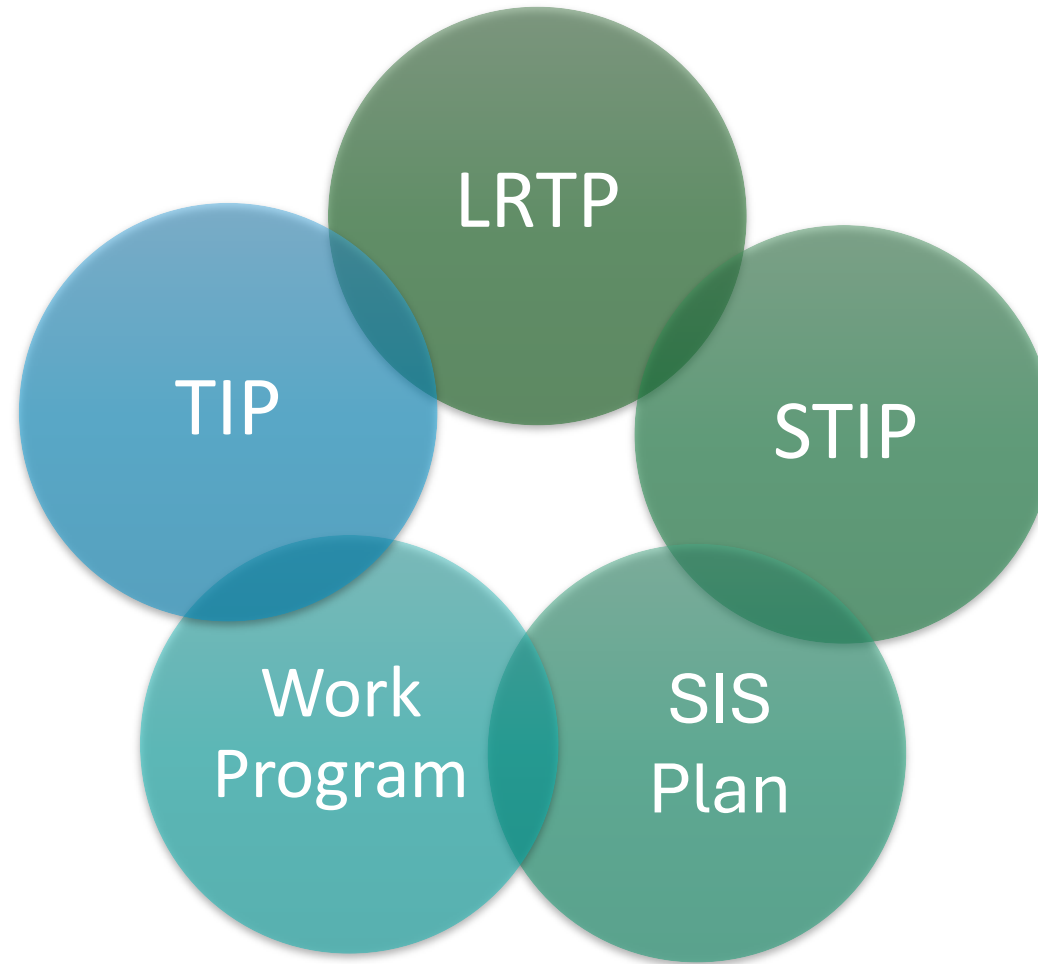
## State Developed

### State Transportation Improvement Program (STIP)

Listing of projects with  
federal participation

Annual Update Cycle

# The Circle of Life (Planning Connectivity)



# Money Magic (Funding Implementation)

## Phased Implementation

PE	Preliminary Engineering
ROW	Right of Way
CST	Construction

Notes: The Railroad and Utilities (RRU) is a separate phase from ROW. Construction funding can be written as DSB for Design Build projects.

# Mo' Money, No Problems

## Acceptable Funding Scenarios

The ideal scenario for OEM approval is full funding of all 3 phases for all project segments in the LRTP CFP

Project Scenario 1		
Seg 1	Seg 2	Seg 3
PE	PE	PE
ROW	ROW	ROW
CST	CST	CST

Funded in LRTP Cost Feasible Plan

NOT Funded in the LRTP Cost Feasible Plan

# Mo' Money, No Problems

## Acceptable Funding Scenarios

Funding for the subsequent phase across all project segments is acceptable. If a project is in the PD&E phase, then PE must be funded for the entire project limits.

Project Scenario 1		
Seg 1	Seg 2	Seg 3
PE	PE	PE
ROW	ROW	ROW
CST	CST	CST

Funded in LRTP Cost Feasible Plan

NOT Funded in the LRTP Cost Feasible Plan



# Mo' Money, No Problems

## Acceptable Funding Scenarios

Funding of all three phases (PE, ROW, CST) for one segment is acceptable

Project Scenario 2		
Seg 1	Seg 2	Seg 3
PE	PE	PE
ROW	ROW	ROW
CST	CST	CST

Funded in LRTP Cost Feasible Plan

NOT Funded in the LRTP Cost Feasible Plan

# No Money, Mo' Problems

## NOT Acceptable Funding Scenarios

Funding for the subsequent phase at one or anything less than all segments is not acceptable to meet planning consistency.

Project Scenario 1		
Seg 1	Seg 2	Seg 3
PE	PE	PE
ROW	ROW	ROW
	CST	CST

Funded in LRTP Cost Feasible Study  
Not Funded in the LRTP Cost Feasible Study

# Making Magic Happen...

The **TIP** is consistent with the **STIP** when:

1. Project information (name, limits, description, etc) is consistent across both documents
2. Project costs in the TIP are within **20% and \$2 Million** of the project costs shown in the STIP

# Example – TIP and STIP Consistency

TIP

Item Number: 414506 7    Project Description: SR 70 FROM LORRAINE ROAD TO BOURNSIDE BLVD    *SIS*    L RTP CFP Page 5-28								
District: 01    County: MANATEE    Type of Work: ADD LANES & RECONSTRUCT    Project Length: 2.862MI								
Phase / Responsible Agency	Fiscal Year							All Years
	<2023	2023	2024	2025	2026	2027	>2027	
<b>RAILROAD &amp; UTILITIES / MANAGED BY FDOT</b>								
ACNP-ADVANCE CONSTRUCTION NHPP		966,720						966,720
ACSA-ADVANCE CONSTRUCTION (SA)		658,280						658,280
DDR-DISTRICT DEDICATED REVENUE		300,000						300,000
LF-LOCAL FUNDS		1,250,000						1,250,000
<b>Phase: RAILROAD &amp; UTILITIES Totals</b>		<b>3,175,000</b>						<b>3,175,000</b>
<b>CONSTRUCTION / MANAGED BY FDOT</b>								
ACNP-ADVANCE CONSTRUCTION NHPP		76,597,137						76,597,137
LF-LOCAL FUNDS		77,025						77,025
<b>Phase: CONSTRUCTION Totals</b>		<b>76,674,162</b>						<b>76,674,162</b>
<b>Item: 414506 7 Totals</b>		<b>79,849,162</b>						<b>79,849,162</b>
<b>Project Totals</b>		<b>79,849,162</b>						<b>79,849,162</b>

Current STIP

Item Number: 414506 7    Project Description: SR 70 FROM LORRAINE ROAD TO BOURNSIDE BLVD    *SIS*								
District: 01    County: MANATEE    Type of Work: ADD LANES & RECONSTRUCT    Project Length: 3.083MI								
Fund Code	Fiscal Year							
	<2023	2023	2024	2025	2026	2027	>2027	
<b>DESIGN BUILD / MANAGED BY FDOT</b>								
ACNP-ADVANCE CONSTRUCTION NHPP					76,597,137			76,597,137
DDR-DISTRICT DEDICATED REVENUE			1,522					1,522
LF-LOCAL FUNDS					77,025			77,025
<b>Phase: DESIGN BUILD Totals</b>			<b>1,522</b>		<b>76,674,162</b>			<b>76,675,684</b>
<b>Item: 414506 7 Totals</b>			<b>1,660</b>		<b>79,104,618</b>			<b>79,106,278</b>

# Making Magic Happen...

The **TIP/STIP** are consistent with the **LRTP** when:

1. Project description is consistent across both documents (project limits may have minor variations as long as there are no major scope changes)
2. Project is shown as **cost-feasible** within two 5-year bands of the LRTP
3. TIP/STIP are within **50% and \$50 Million** of project costs shown in the LRTP

# Example – TIP/STIP and LRTP Consistency

Table 5 6: Bicycle Pedestrian Cost Feasible Project List

#	Jurisdiction	Roadway	Project Limits	Length	Facility	Phase	Cost (FY 2022-2027)	Cost (2028-2045)	Notes
29	Lee County	North River Rd	SR 31 to Hendry County Lane	11.9	Shared Use Path	PE + CST		\$11,500,000	
30	Lee County	Treeline Ave	Colonial Blvd to Pelican Preserve	0.64	Shared Use Path	PE + CST		\$617,600	
31	Lee County	Able Canal	Harns Marsh to Joel Blvd	3	Shared Use Path	CST	\$5,862,650		
32	Estero	Williams Road	Kings Road to Three Oaks	1.1	Sidewalk	PE + CST		\$864,000	
33	Estero	Corkscrew Road	Koreshan St. Park to US 41	0.5	SUP & Sidewalk	PE + CST		\$942,000	

Lee County MPO Transportation Improvement Program - FY 2021/22 - 2025/26

## LRTP



**TRANSPORTATION IMPROVEMENT PROGRAM**  
FISCAL YEAR 2021/22 THROUGH FISCAL YEAR 2025/26

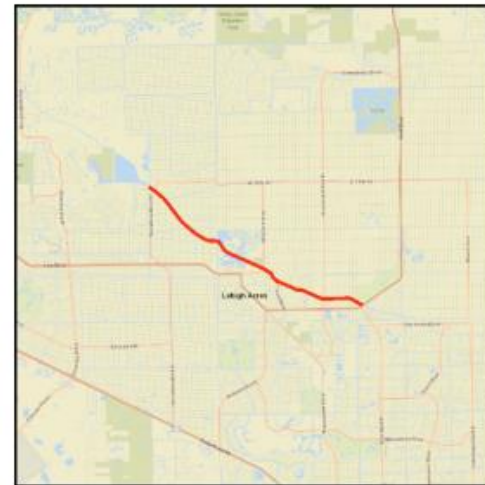
Adopted: June 18, 2021

## TIP

### ABLE CANAL FROM HARNs MARSH TO JOEL BOULEVARD

Project Number: 4353512

Non-SIS



**From:** Harns Marsh **Work Summary:** BIKE PATH/TRAIL  
**To:** Joel Blvd  
**Lead Agency:** MANAGED BY LEE CNTY BOCC **Length:** .000  
**LRTP #:** Page 5-21, Table 5-16

Phase	Fund Source	2021/22	2022/23	2023/24	2024/25	2025/26	Total
CST	LF	0	0	1,500,000	0	0	1,500,000
CST	SU	0	0	4,035,257	0	0	4,035,257
CST	TALU	0	0	327,393	0	0	327,393
<b>Total</b>		<b>0</b>	<b>0</b>	<b>5,862,650</b>	<b>0</b>	<b>0</b>	<b>5,862,650</b>

# Making Magic Happen...

SAMPLE description of first segment advancing ...

Currently Adopted CFP-LRTP	COMMENTS				
PHASE	Currently Approved TIP	Currently Approved STIP	TIP/STIP \$	TIP/STIP FY	COMMENTS
PE (Final Design)			\$		
R/W			\$		
Construction			\$		

SAMPLE description of second segment advancing ...

Currently Adopted CFP-LRTP	COMMENTS				
PHASE	Currently Approved TIP	Currently Approved STIP	TIP/STIP \$	TIP/STIP FY	COMMENTS
PE (Final Design)			\$		
R/W			\$		
Construction			\$		

\* Include pages from current TIP/STIP/LRTP

How to fill out Table

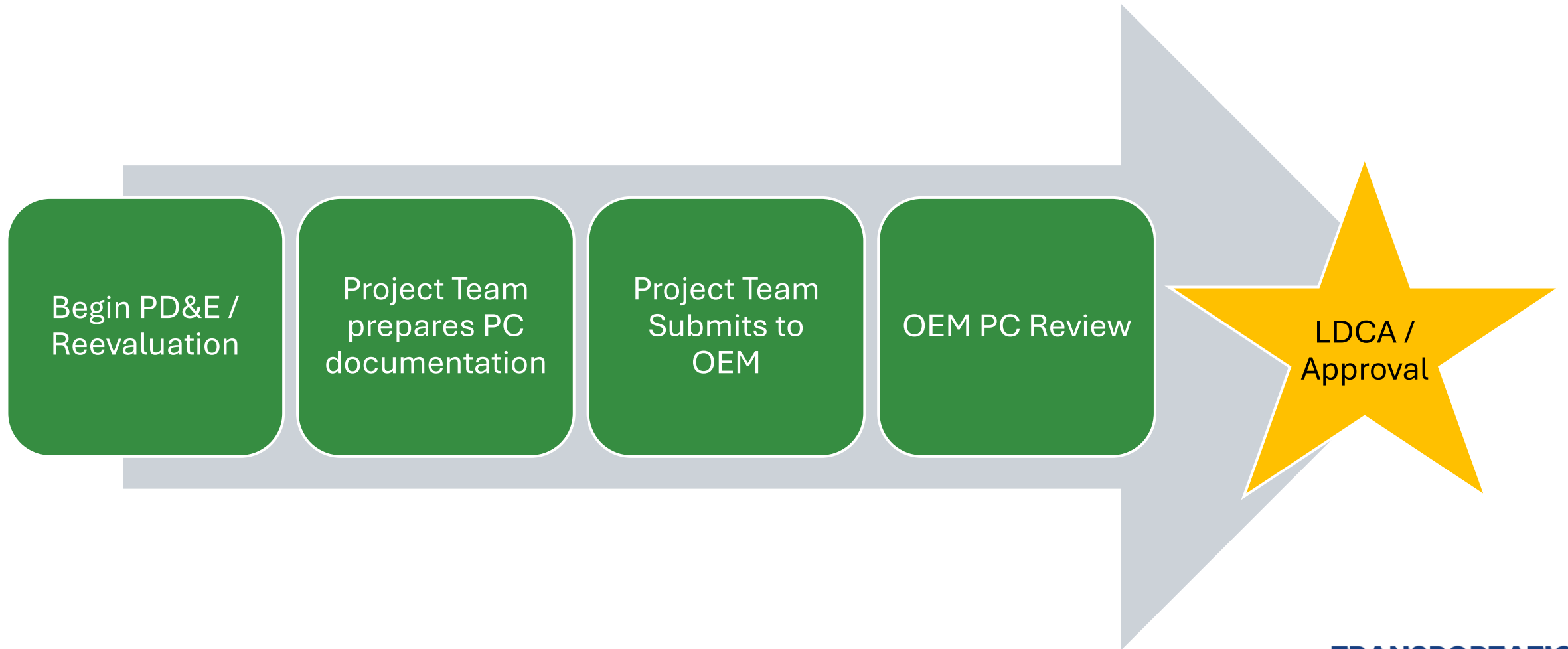
# Example - Planning Consistency Table

Segment FM Number: 414506-7-52-01

Currently Adopted CFP-LRTP	Comments				
Yes	<p>The Sarasota/Manatee Metropolitan Planning Organization (MPO) 2045 Long Range Transportation Plan (LRTP) was adopted in October 2020. This project is included in Chapter 12 - Cost Feasible Plan.</p> <p>The Sarasota/Manatee MPO Transportation Improvement Program (TIP) for FY2022/23 - FY2026/27 was adopted May 23, 2022. This project is included in the TIP.</p>				
Phase	TIP/STIP	Currently Approved	\$	FY	Comments
PE (Final Design)	TIP				N/A. PE funded prior to <2023
PE (Final Design)	STIP				N/A. PE funded prior to <2023
R/W	TIP				N/A. R/W funded prior to <2023
R/W	STIP				N/A. R/W
Construction	TIP	Yes	\$76,674,162 \$76,674,162	2023 All years	Construction funding is on 414506-7. Cost estimates between the TIP and STIP are consistent.
Construction	STIP	Yes	\$76,674,162 \$76,674,162	2023 All years	Construction funding is on 414506-7. Cost estimates between the TIP and STIP are consistent.



# Planning Consistency Development Process



# Missing the Magic...

When project information listed in the planning documents is **not** consistent, an amendment or modification to the LRTP or TIP may be triggered.



~ *Your Friendly FDOT Liaisons*

# Tips & Tricks

- Review your project information in the work program **regularly**
- Review your project information in planning documents at **key milestones** in your project, prior to starting the approval process
- **Coordinate early** with district work program and district liaisons for potential funding scenarios for your projects
- Coordinate with your district liaison whenever you have a major change in scope, cost estimates, or project limits **as soon as possible**

# Tips & Tricks

A hand holding a glowing wand against a dark background with colorful light trails. The wand is held in a way that suggests it is being used to create or manipulate the light trails. The light trails are in shades of purple, pink, and blue, and they appear to be moving or vibrating. The overall effect is magical and dynamic.

*District Liaisons  
Office of Environmental Management  
Office of Policy Planning*

*~ Your Magic Makers*

# Group Exercise

You have an on-going PD&E study with two design/construction segments.

- Design is funded for Segment 1 and is shown in the TIP and STIP. There is no design funding for Segment 2.
- ROW is funded for Segment 1 and is shown in the TIP and STIP. There is no ROW funding for Segment 2.
- There is no construction funding for either segment.
- The project limits were extended after alternatives analysis was completed but before the public hearing.

How can you achieve planning consistency?

# Group Exercise - Example

<b>Funded?</b>	<b>Segment 1</b>	<b>Segment 2</b>
<b>PE</b>	Yes	No
<b>ROW</b>	Yes	No
<b>CST</b>	No	No
<b>LRTP</b>	Illustrative	

# Safety Message

**AS FAST AS YOU THINK  
YOU ARE, THE TRAIN IS  
ALWAYS FASTER.**





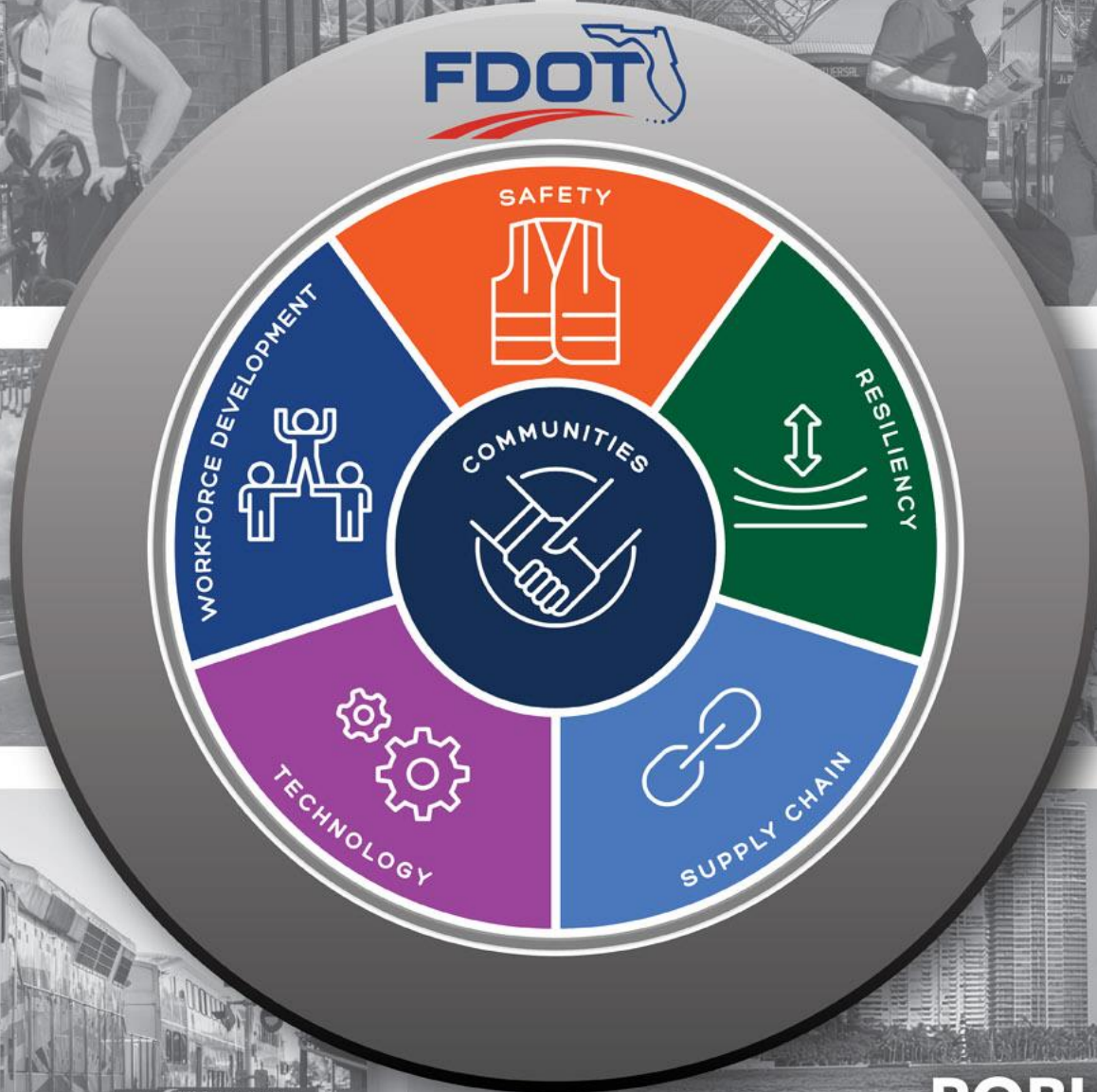
**SAFETY**



**COMMUNITIES**



**WORKFORCE DEVELOPMENT**



**RESILIENCY**



**TECHNOLOGY**



**ROBUST SUPPLY CHAIN**