

 Hollywood, FL

 June 13-14, 2024

2024 TRANSPORTATION SYMPOSIUM

Deciphering the Process: Coordination and Permitting of the Sebastian Inlet Bridge Replacement Project



Ann Broadwell

FDOT District 4
Planning & Environmental Office

Binod Basnet, P.E.

FDOT District 4
Design Office

Presentation Objectives

- History of the Bridge
- Project Preparation
 - Feasibility Study and ETAT coordination
 - Purpose and Need of Project
 - PD&E Commitments
- Stakeholders and working our way through the permitting process



Project Location





All Historic Sebastian Inlet Maps and Photographs Courtesy of the Sebastian Inlet District

History

Sebastian Inlet



1905 - 1918



**SEBASTIAN
INLET DISTRICT**

**TRANSPORTATION
SYMPOSIUM**



The Tax District goes west to Osceola County, east to the Ocean, north to Viera Blvd in Brevard County and south to SR 60 in Indian River County



**SEBASTIAN
INLET DISTRICT**

History - during WW II

Sebastian Inlet

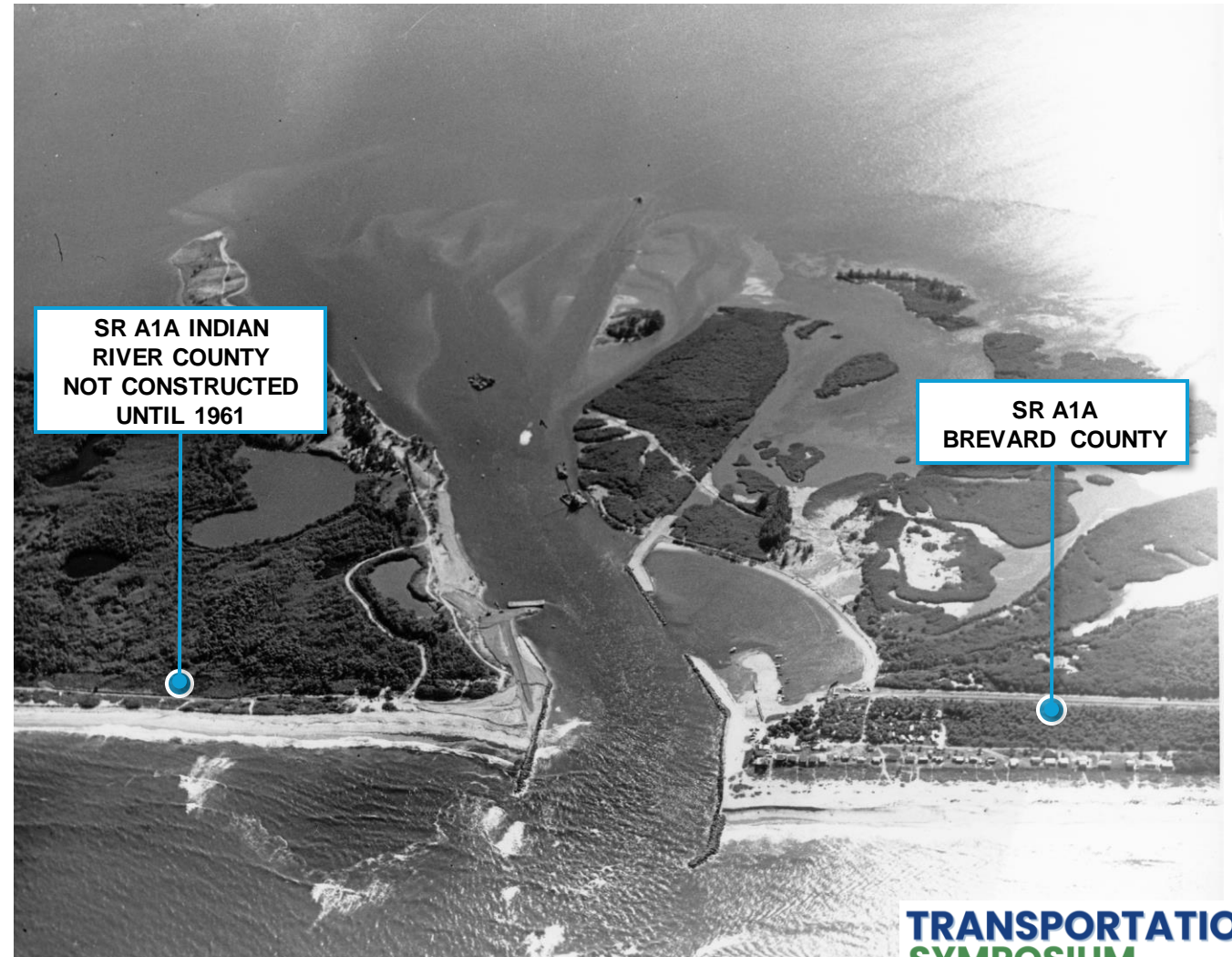


**TRANSPORTATION
SYMPOSIUM**

History – after WW II



- SR A1A in Brevard County was constructed by the Florida State Road Department between 1951 and 1956.
- SR A1A in Indian River County was acquired by the Florida State Road Department around 1961 and constructed prior to completion of the bridge



History

Sebastian Inlet Bridge



1960s



TRANSPORTATION
SYMPOSIUM

- State of Florida, FDEP Division of State Lands, acquired land surrounding the inlet and in 1971 **Sebastian Inlet State Park** was established
- The Sebastian Inlet State Park has grown to 971 acres

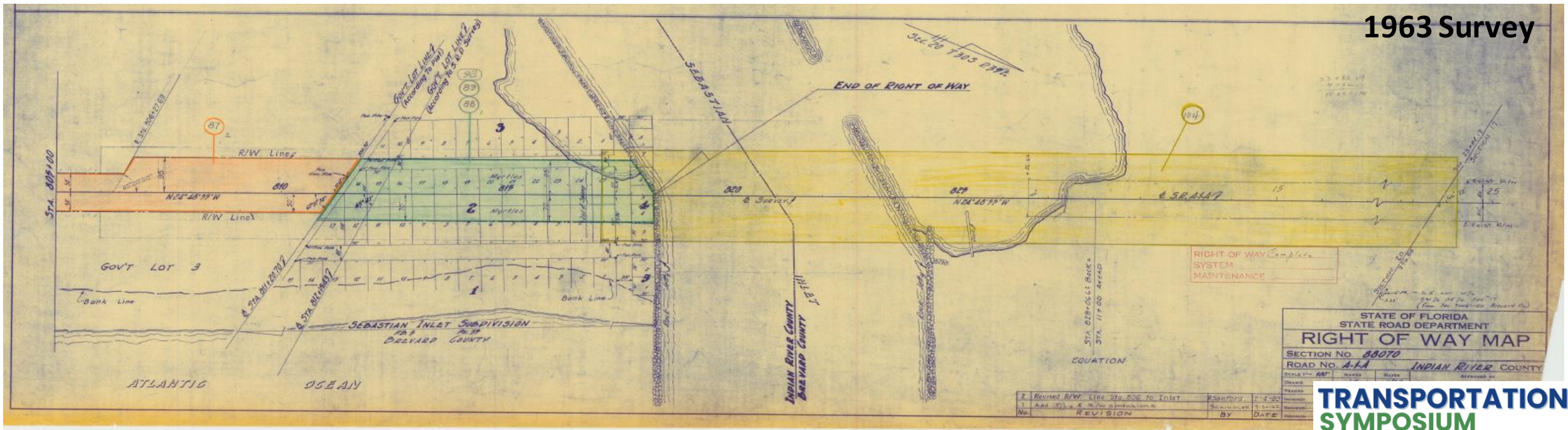


History

FDOT Right-of-Way

- The Sebastian Inlet District (SID) owns the land (fee simple title) under the bridge
- SID granted an easement to the Florida State Roads Department through a July 22, 1963 agreement
- ROW Widths:
 - Bridge 240-foot wide
 - SR A1A 100-foot wide

1963 Survey



TRANSPORTATION
SYMPOSIUM

It all Started with a Safety Study.....

2019 Bicycle/Pedestrian Data Counts

Dec 12 – Dec 15 6:00 AM to 6:00 PM



231 Bicyclists



5 Pedestrians

Currently crossing the bridge despite not having appropriate bicycle and pedestrian facilities



Purpose and Need

Existing Bridge Condition

Structurally Deficient

substructure rated “Poor”
superstructure rated “Poor”

Functionally Obsolete

no sidewalks
no bike lanes
no shoulders



Purpose and Need

Existing Bridge Condition



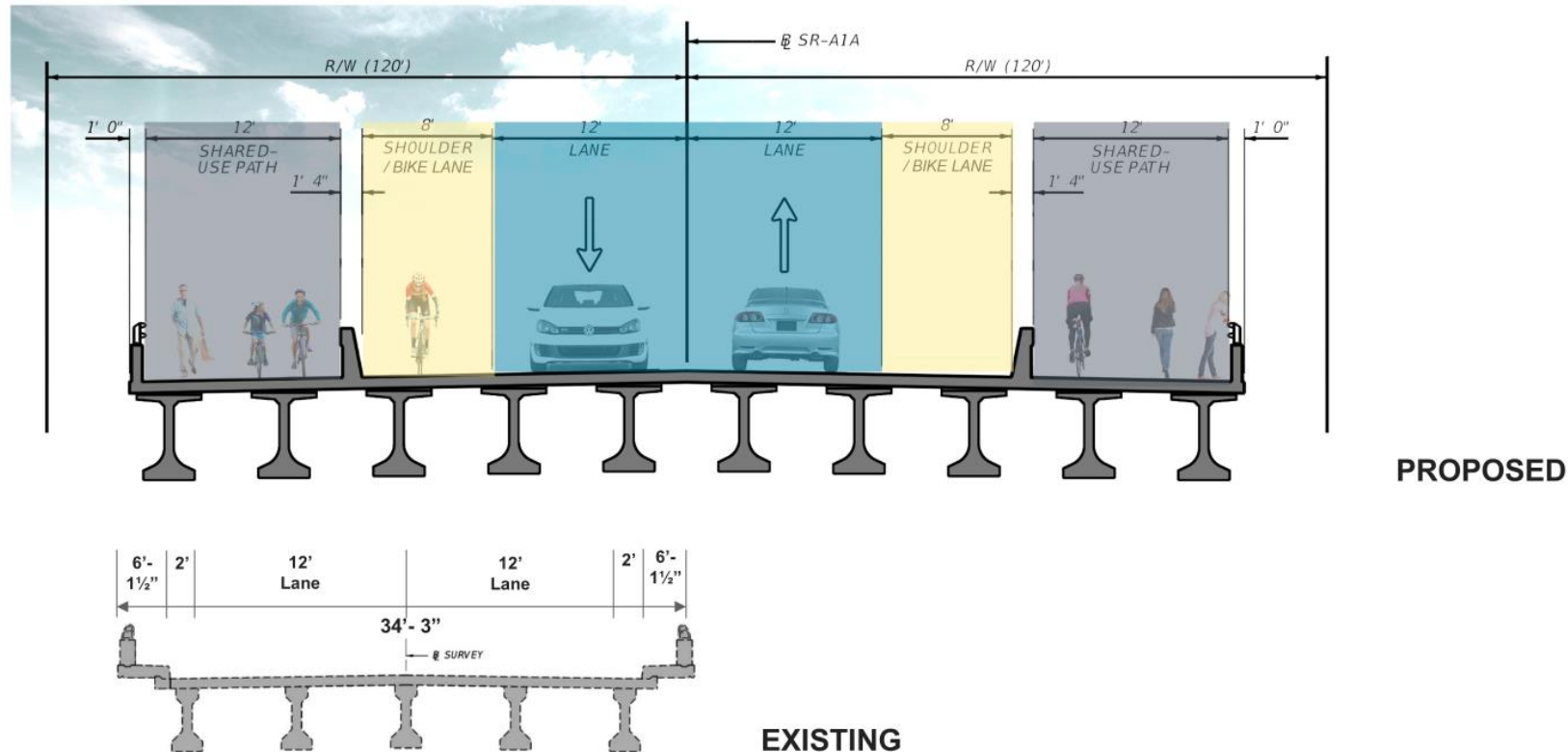


SR A1A OVER SEBASTIAN INLET - BRIDGE 880005 - BRIDGE REPLACEMENT PD&E STUDY
FPID: 445618-1-22-02 | ETDM: 14433

33

PUBLIC HEARING

Comparison of Existing and Proposed Bridge Typical Sections



Purpose and Need:

Preferred Alternative



PD&E Commitments



- Maintain traffic across the inlet at all times
- Repaving of the south and north parking lots
- Drainage improvements for the parking lots
- Include flight diverters on the bridge over the water (similar to existing)

Start PD&E/NTP – 11/20/2020
LDCA – 5/23/2023

Production – 10/02/2025 !!!!

Permits and Coordination:

Federal and State

- US Coast Guard
- US Army Corps of Engineers
- US Fish & Wildlife Service
- NOAA National Marine Fisheries Service
- Florida Department of State Parks – Sebastian Inlet State Park
- Florida Department of Environmental Protection
- Florida Fish and Wildlife Conservation Commission
- State Historic Preservation Office

Local Agencies

- Sebastian Inlet District
- Florida Inland Navigation District
- Indian River County and Metropolitan Planning Organization
- Brevard County
- Space Coast Transportation Planning Organization
- Indian River Lagoon Council
- Indian River Scenic Byway Coalition



Agency Coordination – FDEP Park Management

Feasibility/Planning – Coordination Meeting with Park Management, discuss fishing piers and maintenance responsibility

PD&E – research existing agreements and ROW documents, research how Park uses FDOT ROW under existing bridge, address Section 4(f) impacts, fishing pier to be included in design and construction

Design and Permitting – discuss temporary trestles and impacts to park, design park entrances with safety in mind, develop updated ROW documents (both D4 & D5)

Agency Coordination – FDEP Recreation and Parks

Feasibility/Planning –

PD&E – research existing agreements and ROW documents, research how Park uses FDOT ROW under existing bridge, address Section 4(f) impacts

Design and Permitting – discuss temporary trestles and impacts to park, design park entrances with safety in mind, develop an updated ROW easement agreements (both D4 & D5), discuss construction phasing

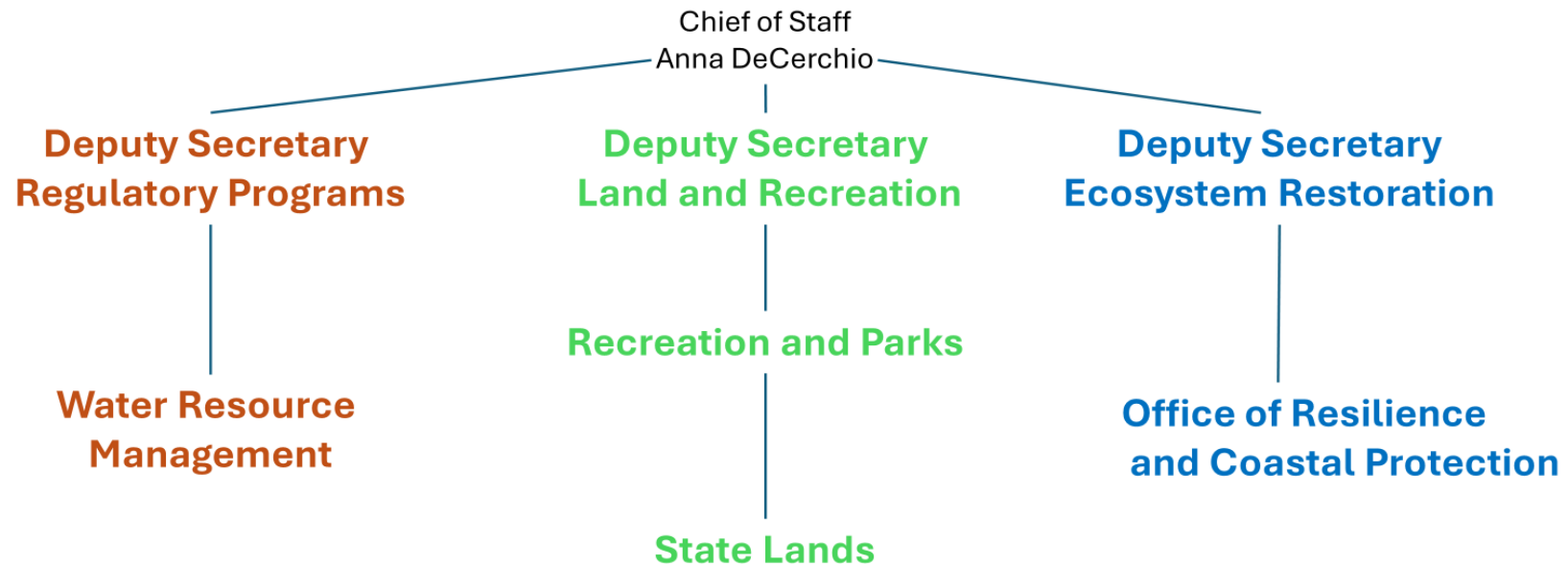
Agency Coordination – FDEP Division of State Lands

Feasibility/Planning –

**PD&E – New chapter in the PD&E Manual, Volume II, Chapter 23
Acquisition and Restoration Council (ARC) Coordination**

Design and Permitting – prepare Upland Easement Application Package, demonstrate that the project meets the Linear Facilities Policy, prepare to present at the ARC meeting. The end goal is a MOA.

Permits and Coordination - *but wait, there's more*



Agency Coordination – FDEP Office of Resilience and Coastal Protection

Feasibility/Planning –

PD&E –

Design and Permitting – they came to us asking about impacts to the sand trap at the western end of the inlet.

Good News - No additional permit required!

Agency Coordination – FDEP Water Resource Management (Not 404)

Planning/Feasibility –

PD&E – Started coordination with SJRWMD. Established that a Coastal Construction Control Line permit is necessary. FDEP will take the lead on State ERP

Design and Permitting – pre-application meeting to occur this month. Goal is one submittal, no RAI

Agency Coordination – Sebastian Inlet District

Planning/Feasibility – Coordination Meeting with SID and Park Management, project support established

PD&E – research existing agreements and ROW documents, research how SID uses the SR A1A driveway, research how SID maintains the jetties and inlet. SID continue to support the project

Design and Permitting – design a safe driveway, develop an updated ROW easement agreement, discuss construction phasing

Agency Coordination – Sebastian Inlet District



FDOT has an
easement to be in
SID ROW and SID has
an easement for the
driveway connection

Agency Coordination – Sebastian Inlet District



Relocating the SID driveway provides a safer condition for the sand hauling and the SR A1A travelers

Agency Coordination – Construction Phasing



Agency Coordination – State Historic Preservation Office

Eligible for the National Register of Historic Places (NRHP)

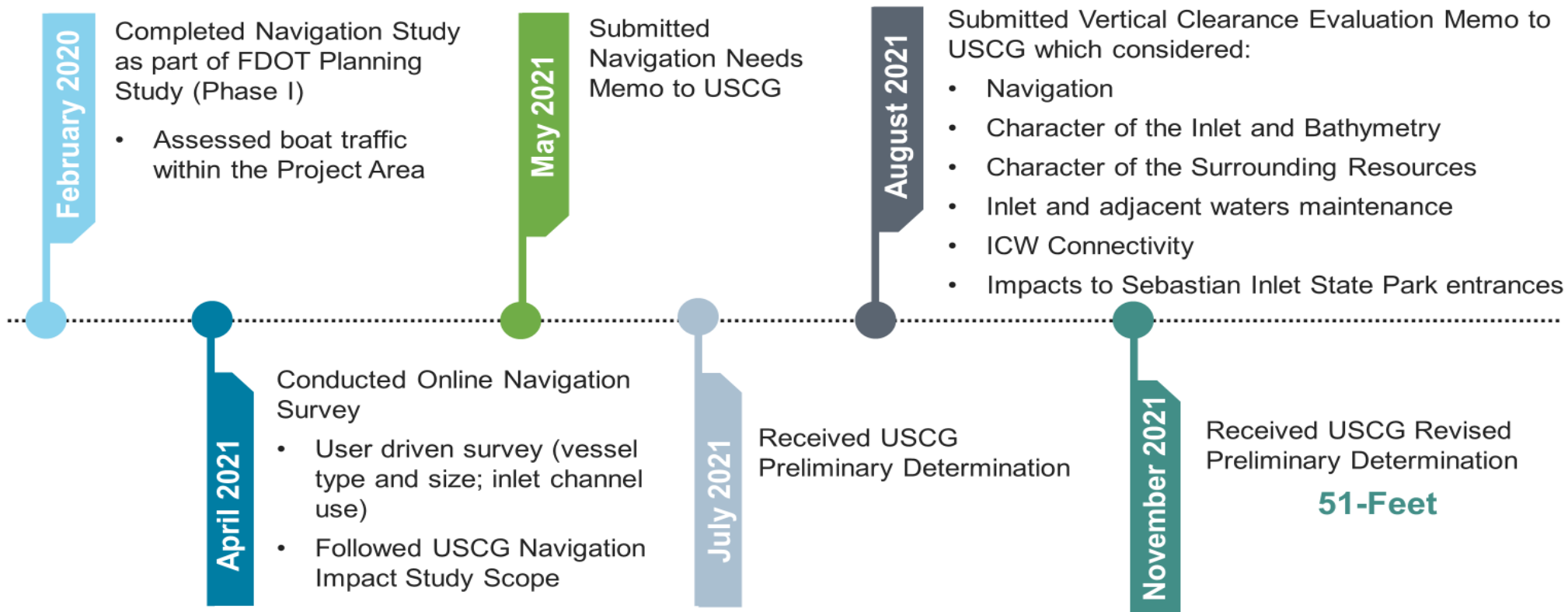


Determined Eligible for Listing under **Criterion C** in the area of Engineering for its high-integrity embodiment of a prestressed concrete bridge in Florida

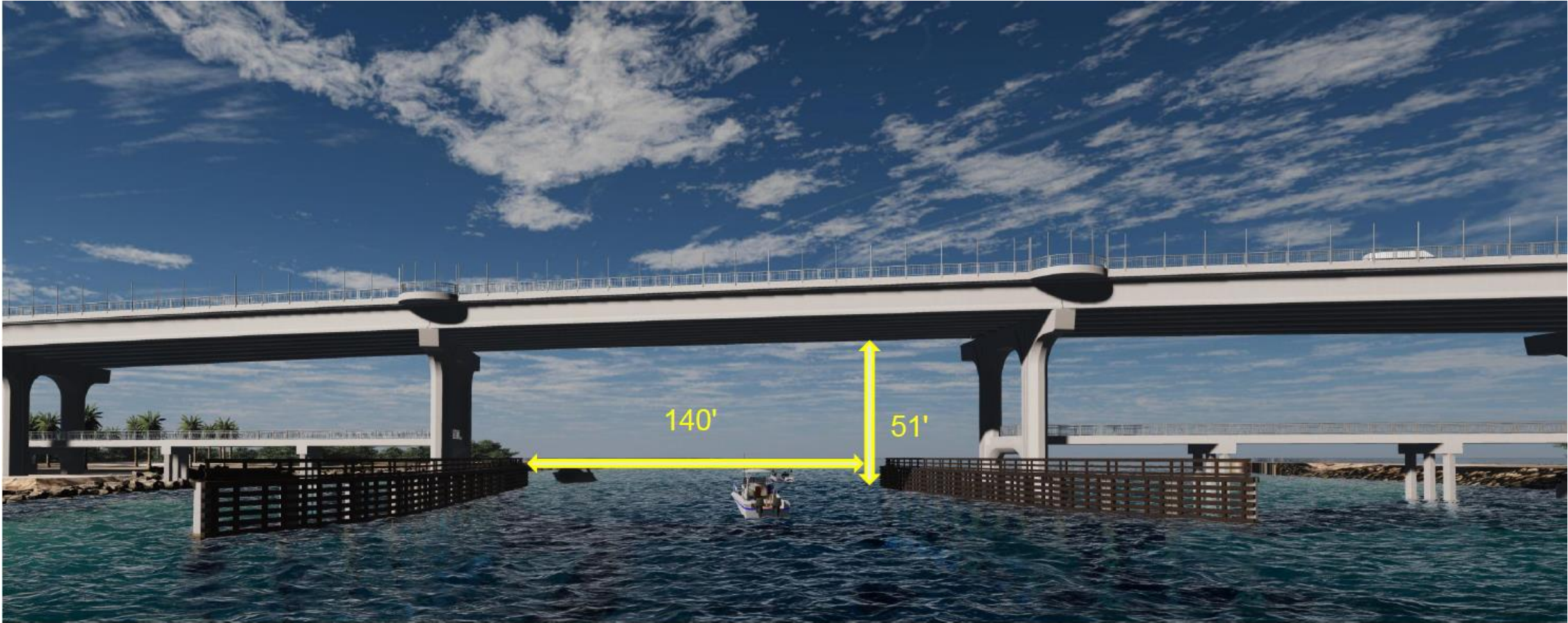
Agency Coordination - USCG



USCG Coordination



Agency Coordination - USCG



Coordinate with stakeholders early and often

Research your project and the community around it

**Overlap PD&E and Design, avoid re-design
of the Preferred Alternative**

**Always, always, always look for
opportunities to improve safety**

Give the people what they want

Contact Us



Project website: <https://www.fdot.gov/projects/SebastianInletBridge>

FDOT

Ann Broadwell

District Environmental Manager

[FDOT District 4](#)

Planning and Environmental Office

Phone: 954-777-4325

Email: Ann.Broadwell@dot.state.fl.us

Binod Basnet, P.E.

Project Management Supervisor

[FDOT District 4](#)

Consultant Management Section, Design Office

Phone: 954-777-4146

Email: [Binod.Basnet @dot.state.fl.us](mailto:Binod.Basnet@dot.state.fl.us)

CONSULTANTS

Ian Biava, P.E.

Consultant Project Manager - **Design**

[TranSystems](#)

Phone: 954-200-8264

Email: Ibiava@TranSystems.com

Beth Beam MS, AICP

Consultant Project Manager - **PD&E Study**

[Stantec](#)

Phone: 407-627-9772

Email: Beth.Beam@Stantec.com

District 4 Safety Message



Be Prepared



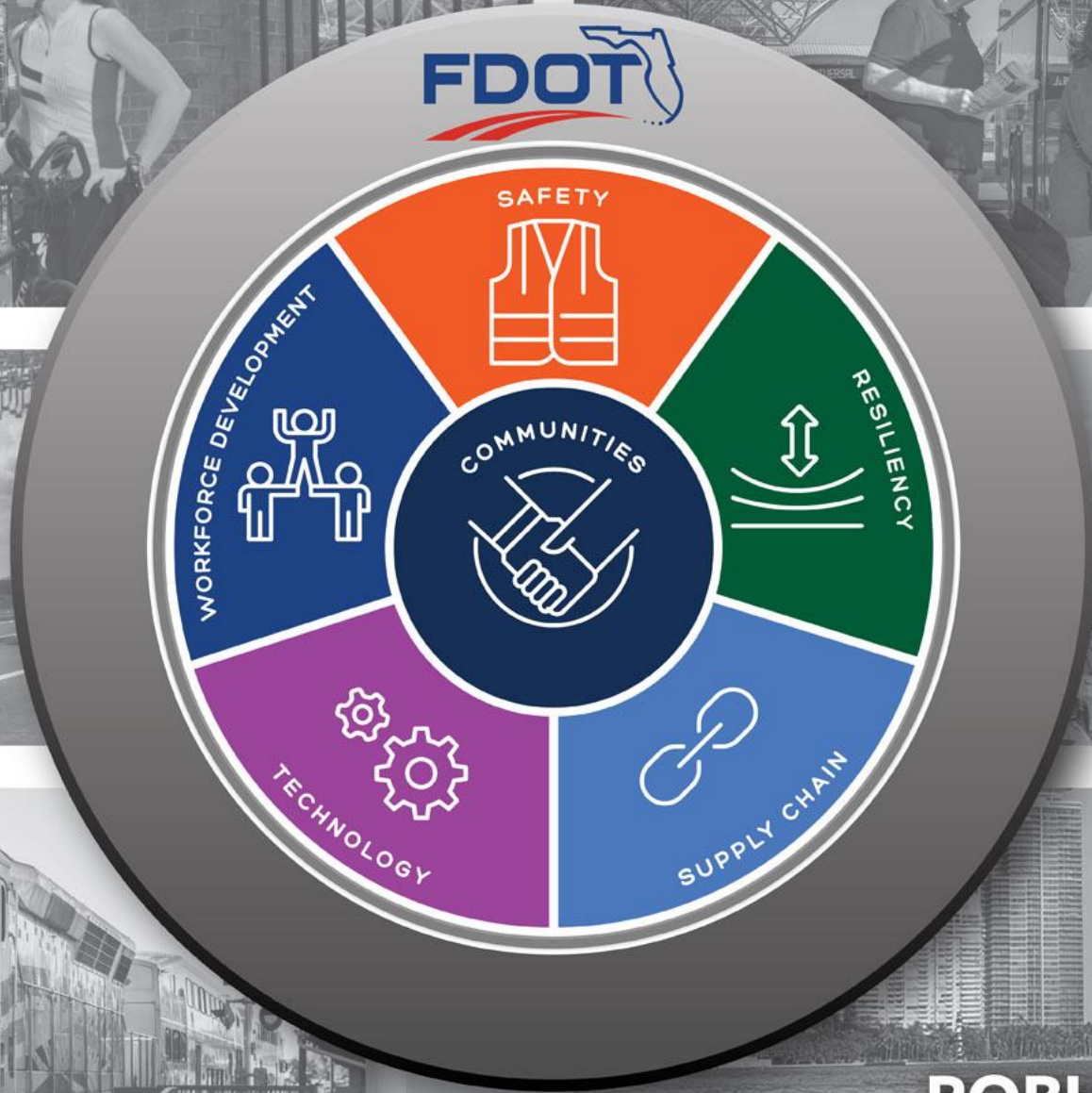
SAFETY



COMMUNITIES



**WORKFORCE
DEVELOPMENT**



RESILIENCY



TECHNOLOGY



ROBUST SUPPLY CHAIN