
Index 646-001 Aluminum Post and Pedestal Mounted Pedestrian Detectors and Signals

ORIGINATION

Date: 9/4/2025

Name: Shae Gibbs

Phone: (850)414-4314

Email: shae.gibbs@dot.state.fl.us

COMMENTARY

This note was added to correspond with Standard Plans Index 653-001 in coordination with the TERL.

COMMENTS AND RESPONSES

BLACK = Industry Review Comments **BLUE** = Standard Plans Response **GREEN** = Change Made to Index

Name: Xiaoxue Peng

Date: 4/29/24

COMMENT: Note 7 should be "Pedestal mounted"?

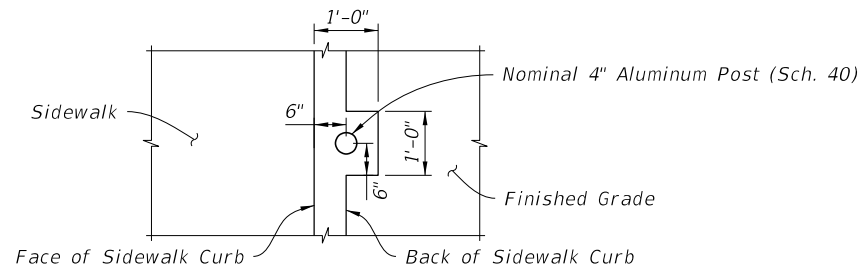
RESPONSE: Good catch! That sentence has been updated.

CHANGE MADE TO INDEX: Corrected wording in Note 7.

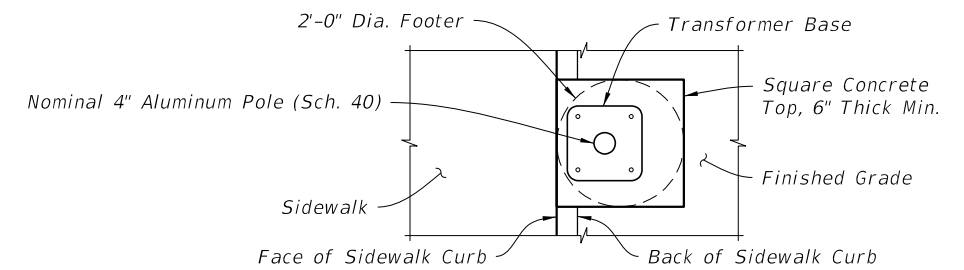
Response Date: 5/7/24

NOTES:

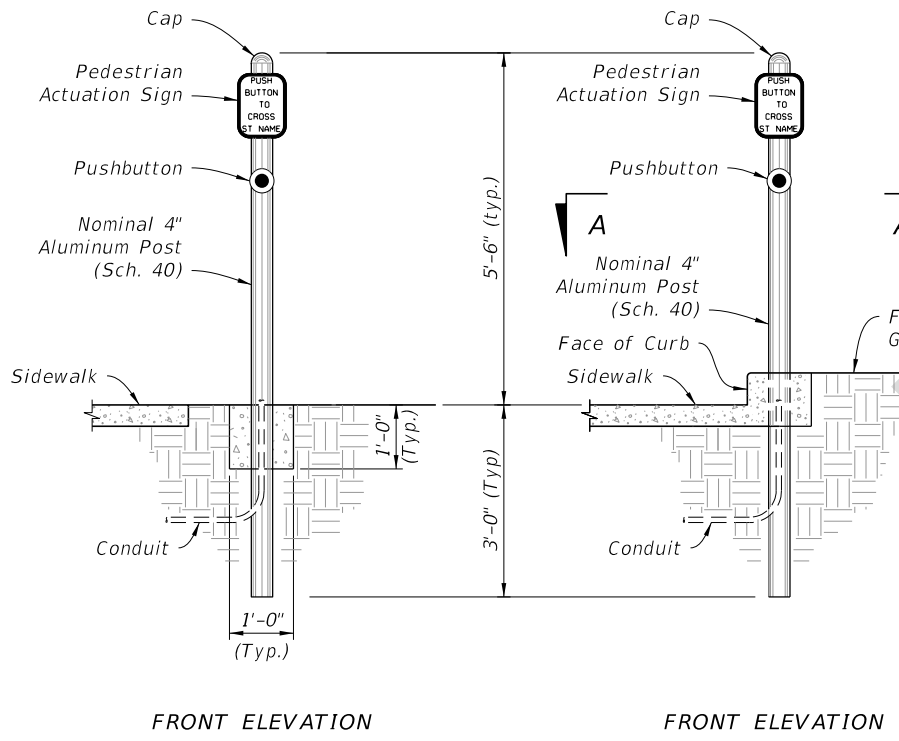
1. Work this Index with Specification 646.
2. For Pedestrian Signals see Index 653-001.
3. For Pedestrian Detector Assembly (i.e., Pushbutton and Sign) details see Index 665-001.
4. Footing may be Cast-In-Place (C-I-P) or Precast.
5. As an alternative to the direct buried "Post Mounted" Pedestrian Detector Assembly shown below, the post may be installed on a transformer base. Use a transformer base included on the APL approved as an alternative to a "Post Mounted" assembly,
6. In lieu of footing design shown, a Spread Footing may be used in accordance with Index 700-120.
7. For pedestal mounted signals, route and terminate the grounding electrode conductor to a ground lug within the transformer base.



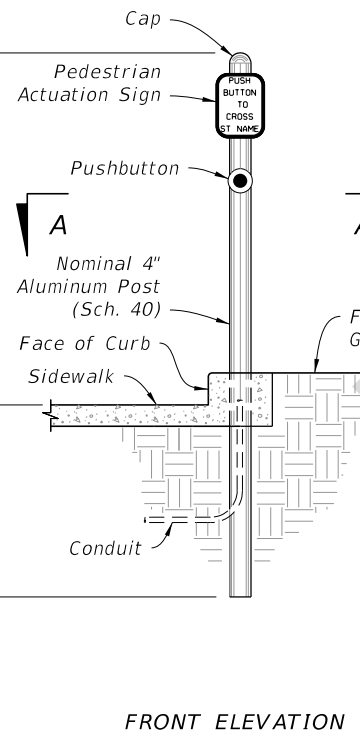
PLAN VIEW SECTION A-A



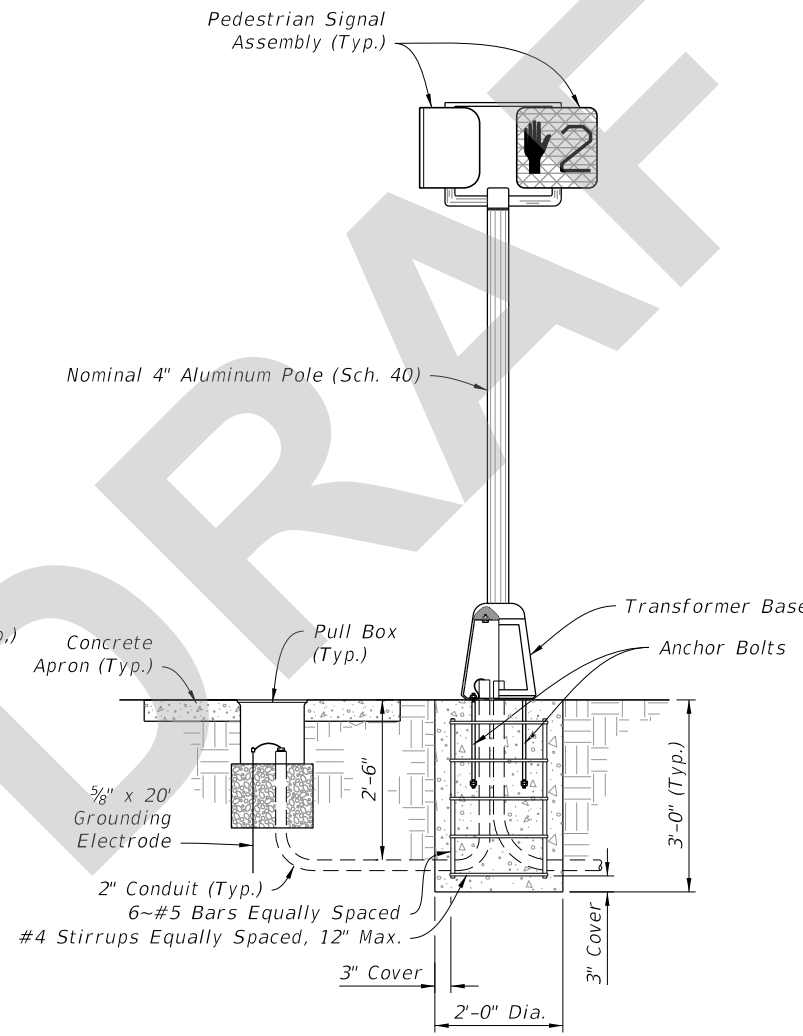
PLAN VIEW SECTION B-B



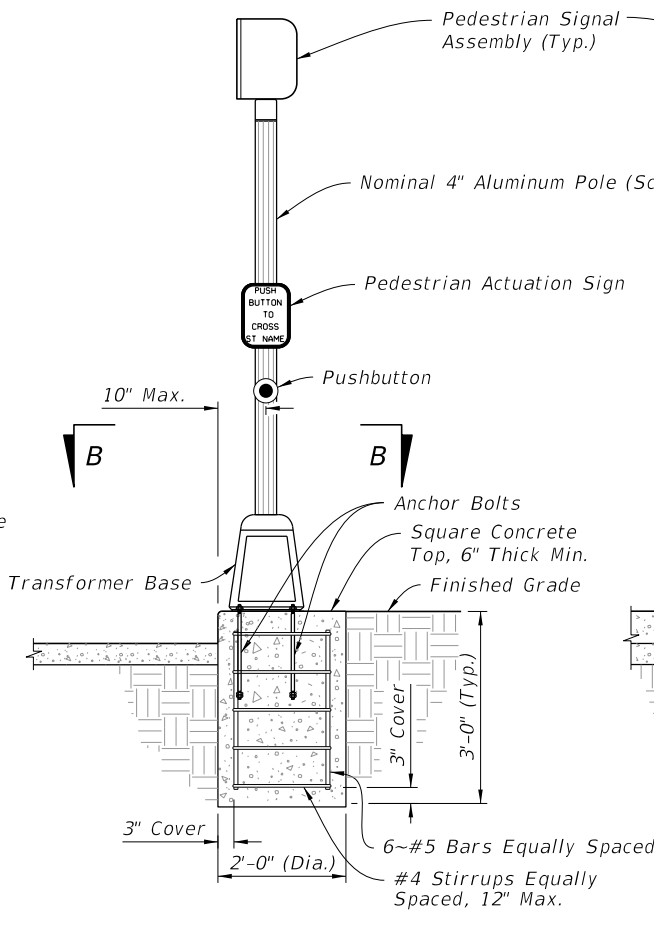
FRONT ELEVATION
ADJACENT TO SIDEWALK



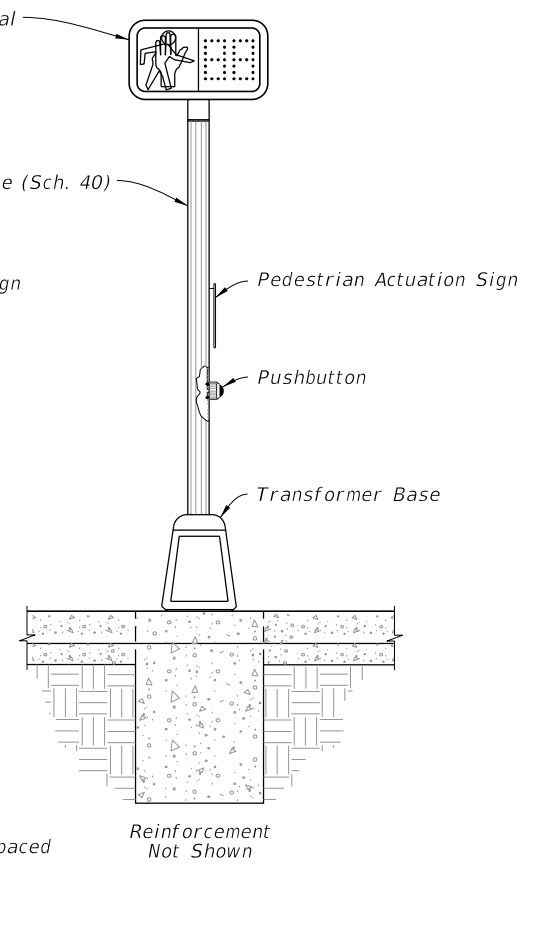
FRONT ELEVATION
IN SIDEWALK CURB



FRONT ELEVATION
ADJACENT TO SIDEWALK



SIDE ELEVATION




FRONT ELEVATION
(CONDUIT AND GROUNDING NOT SHOWN)

POST MOUNTED

PEDESTAL MOUNTED

5/4/2026 1:21:23 PM

LAST REVISION 11/01/26	REVISION	DESCRIPTION:	 FY 2027-28 STANDARD PLANS	ALUMINUM POST AND PEDESTAL MOUNTED PEDESTRIAN DETECTORS AND SIGNALS	INDEX 646-001	SHEET 1 of 1
---------------------------	----------	--------------	---	--	------------------	-----------------