

Origination Form
Proposed Revisions to a Standard Plans Index

Originator:	Turley, Joshua	Index Number:	700-020
Date:	5/14/2025	Sheet Number(s):	Sheet 1
E-mail:	Joshua.Turley@dot.state.fl.us	Index Title:	MULTI-COLUMN GROUND SIGN

Summary of the changes:

Sheet 1: Modified note 3A for clarity.

Commentary/Background:

There was some confusion of what the 2'-0" allowance meant. It refers to the column locations not for anything in the index.

Other Affected Documents/Offices	Person Contacted	Affected (Yes/No)
Other Standard Plans		No
FDOT Design Manual		No
Standard Specifications		No
Basis of Estimates Manual		No
Approved Product List		No
Construction Office		No
Maintenance Office		No

Implementation

["FY-Standard Plans (Next Release)"]

GENERAL NOTES:

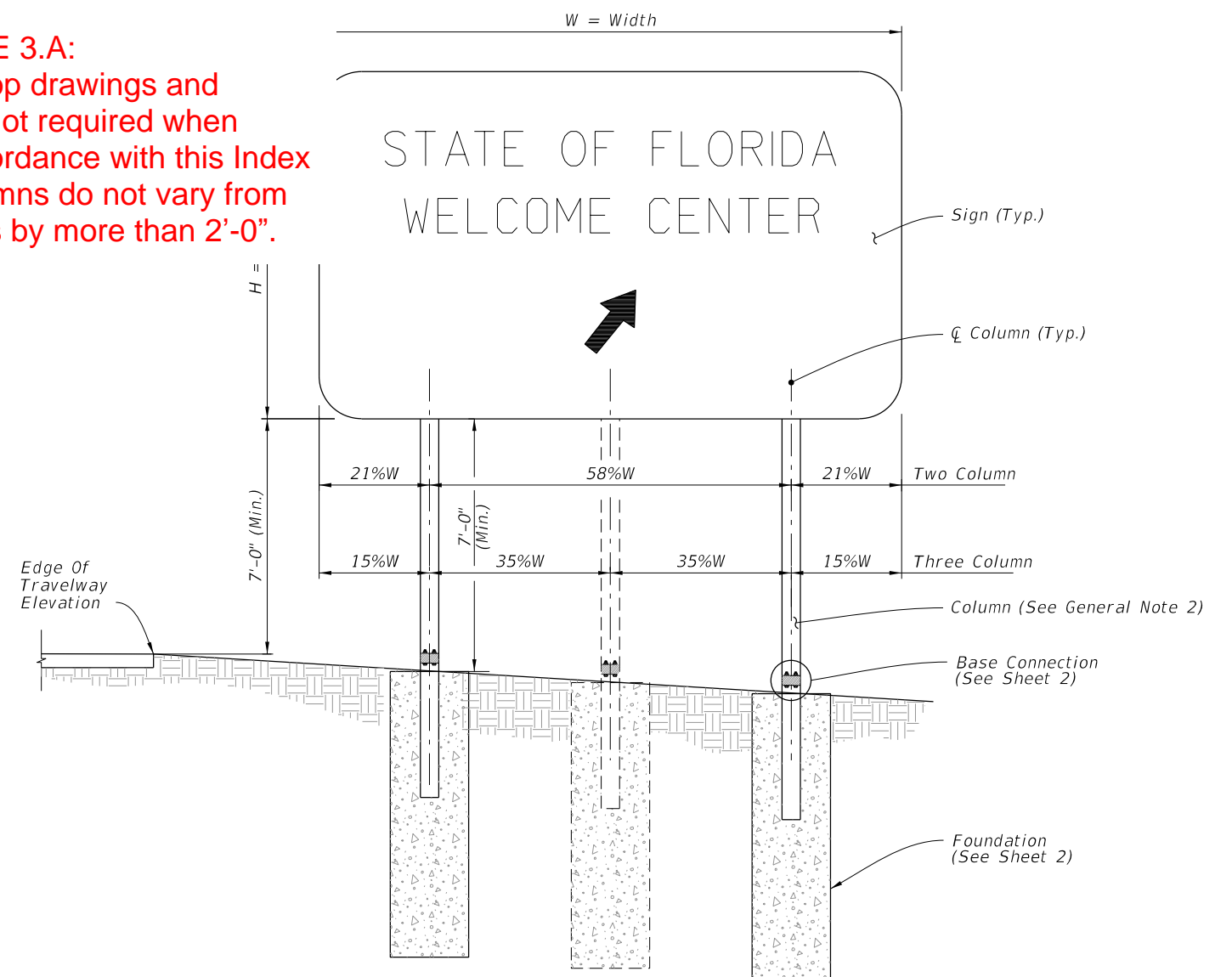
1. Meet the requirements of Specification 700.
2. Verify Column lengths in the field prior to fabrication.
3. Shop drawings:

- ~~A. Sign Support Shop drawings are not required when fabricated in accordance with this Index and support columns do not exceed the width ("W") shown in the plans by more than 2'-0".~~
- B. Sign Panels: Horizontal panel splices are allowed at interior wind beams for sign panels with a height ("H") greater than 10 feet. Shop drawings required for horizontal panel splice details.
- C. When shop drawings are required, obtain approval prior to fabrication.

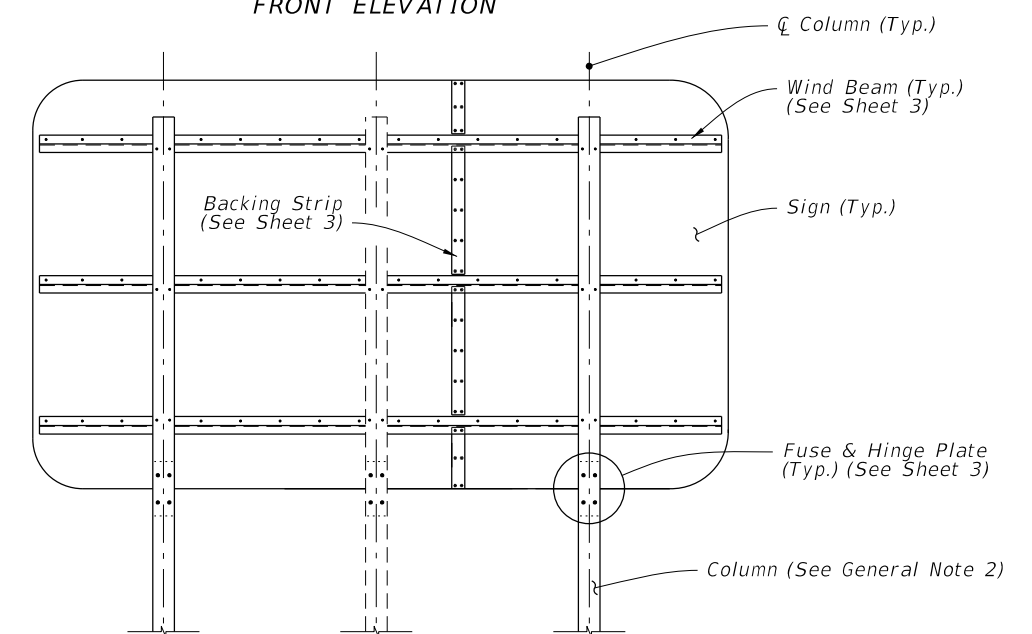
4. Materials:

- A. Sign Panel Mounting Materials:
- a. Aluminum Bars, and Extruded Shapes: ASTM B221, Alloy 6061-T6 or Alloy 6351-T5
 - b. Aluminum Structural Shapes: ASTM B221, Alloy 6061-T6
- B. Sign Support Structure Materials:
- a. Steel Plates and Structural Shapes: ASTM A36 or ASTM A709, Grade 36
 - b. Steel Weld Metal: E70XX
- C. Aluminum Bolts, Nuts and Washers:
- a. Flat Head and Button Head Bolts: ASTM F 468, Alloy 2024-T4
 - b. Hex Nuts: ASTM F467, 2024-T4
 - c. Washers: ASTM B221, Alloy 2024-T4
- D. Stainless Steel Bolts, Nuts and Washers Alloy Group 2, Condition A, may be substituted for the Aluminum bolts as follows:
- a. Bolts: ASTM F593, CW1 or SH1
 - b. Nuts: ASTM F594,
- E. High Strength (H.S.) Steel Bolts, Nuts and Washers:
- a. Galvanized Hex Head Bolts: ASTM F3125, Grade A325, Type 1
 - b. Galvanized Nuts: ASTM A563 Hex, Grade DH
 - c. Galvanized Washers: ASTM F436
- F. Concrete: Class II.

CHANGED NOTE 3.A:
Sign Support Shop drawings and calculations are not required when fabricated in accordance with this Index and support columns do not vary from the plan locations by more than 2'-0".



FRONT ELEVATION



BACK ELEVATION

MULTI-COLUMN SIGN ASSEMBLY

11/01/25

2026-27



FY 2025-26
STANDARD PLANS

MULTI-COLUMN GROUND SIGN

INDEX
700-020

SHEET
1 of 3

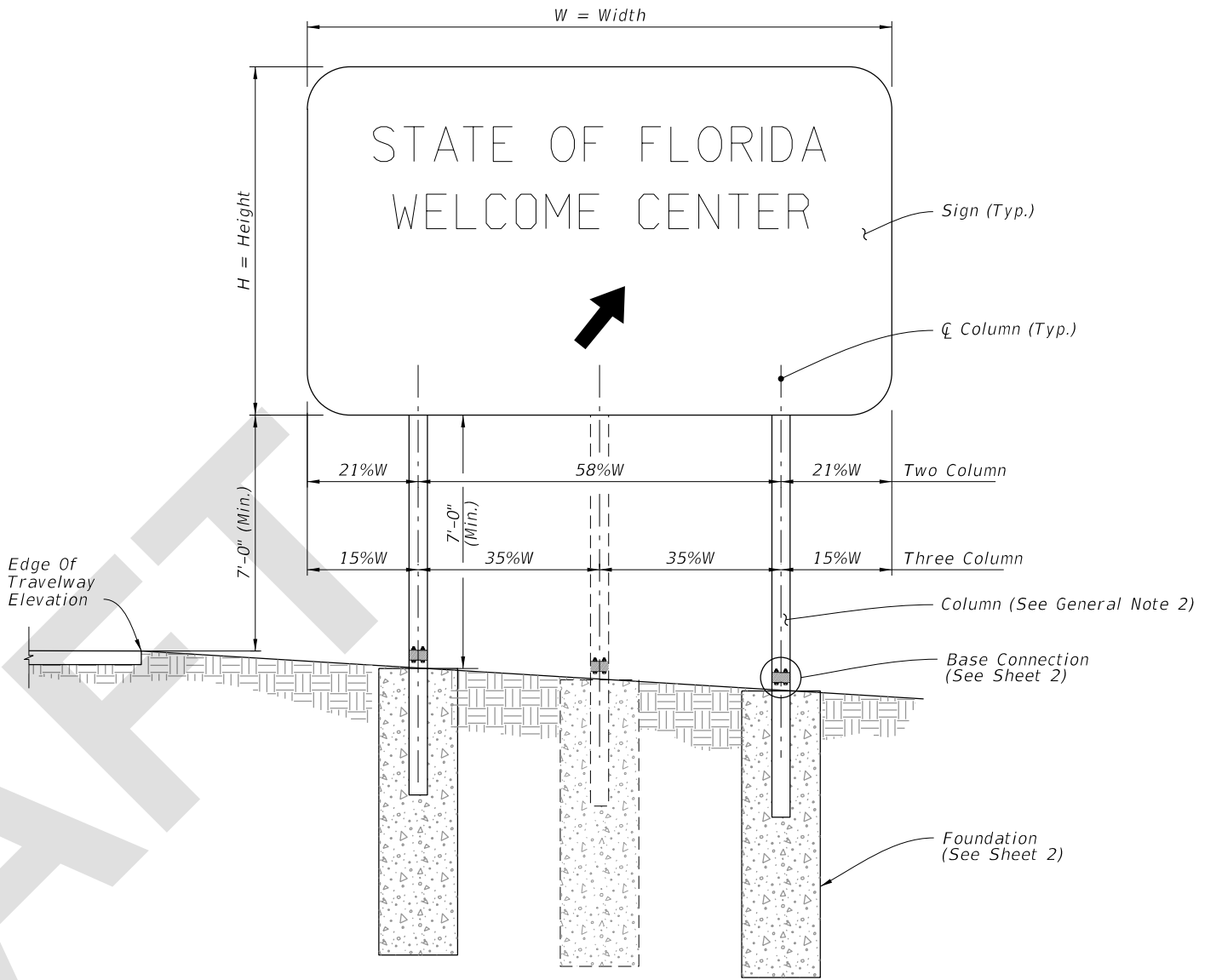
LAST
REVISION
11/01/23

REVISION

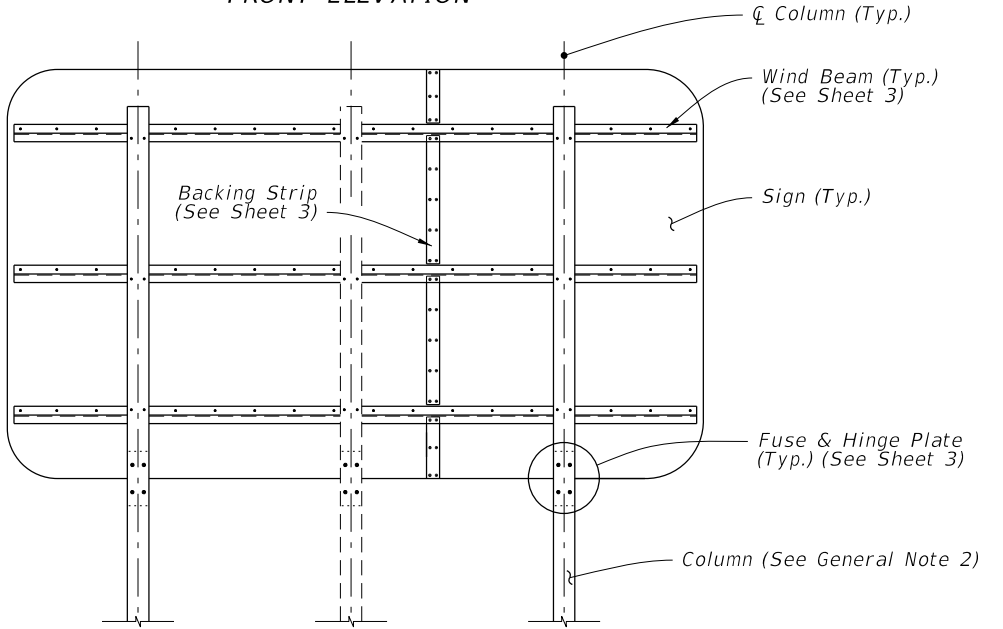
9/10/2024 2:43:24 PM

GENERAL NOTES:

1. Meet the requirements of Specification 700.
2. Verify Column lengths in the field prior to fabrication.
3. Shop drawings:
 - A. Sign Support Shop drawings and calculations are not required when fabricated in accordance with this Index and support columns do not vary from the plan locations by more than 2'-0".
 - B. Sign Panels: Horizontal panel splices are allowed at interior wind beams for sign panels with a height ("H") greater than 10 feet. Shop drawings required for horizontal panel splice details.
 - C. When shop drawings are required, obtain approval prior to fabrication.
4. Materials:
 - A. Sign Panel Mounting Materials:
 - a. Aluminum Bars, and Extruded Shapes: ASTM B221, Alloy 6061-T6 or Alloy 6351-T5
 - b. Aluminum Structural Shapes: ASTM B221, Alloy 6061-T6
 - B. Sign Support Structure Materials:
 - a. Steel Plates and Structural Shapes: ASTM A36 or ASTM A709, Grade 36
 - b. Steel Weld Metal: E70XX
 - c. Shims: Brass ASTM B36 or Galvanized Steel
 - C. Aluminum Bolts, Nuts and Washers:
 - a. Flat Head and Button Head Bolts: ASTM F 468, Alloy 2024-T4
 - b. Hex Nuts: ASTM F467, 2024-T4
 - c. Washers: ASTM B221, Alloy 2024-T4
 - D. Stainless Steel Bolts, Nuts and Washers Alloy Group 2, Condition A, may be substituted for the Aluminum bolts as follows:
 - a. Bolts: ASTM F593, CW1 or SH1
 - b. Nuts: ASTM F594,
 - E. High Strength (H.S.) Steel Bolts, Nuts and Washers:
 - a. Galvanized Hex Head Bolts: ASTM F3125, Grade A325, Type 1
 - b. Galvanized Nuts: ASTM A563 Hex, Grade DH
 - c. Galvanized Washers: ASTM F436
 - F. Concrete: Class II.



FRONT ELEVATION



BACK ELEVATION

MULTI-COLUMN SIGN ASSEMBLY



FY 2026-27
STANDARD PLANS

MULTI-COLUMN GROUND SIGN

INDEX
700-020

SHEET
1 of 3

LAST
REVISION
11/01/25

REVISION
DESCRIPTION:

5/28/2025 10:39:54 AM