

**Origination Form**  
Proposed Revisions to a Standard Plans Index

<b>Originator:</b>	Turley, Joshua	<b>Index Number:</b>	521-820
<b>Date:</b>	4/29/2025	<b>Sheet Number(s):</b>	Sheet 2
<b>E-mail:</b>	Joshua.Turley@dot.state.fl.us	<b>Index Title:</b>	27" CONCRETE PARAPET WITH PEDESTRIAN/BICYCLE BULLET RAILING

**Summary of the changes:**

Sheet 2: Added a grout plug option as an alternate detail.

**Commentary/Background:**

Contractors wanted a more constructible and economical option that would still perform the intended function of preventing water to flow out between the open joints.

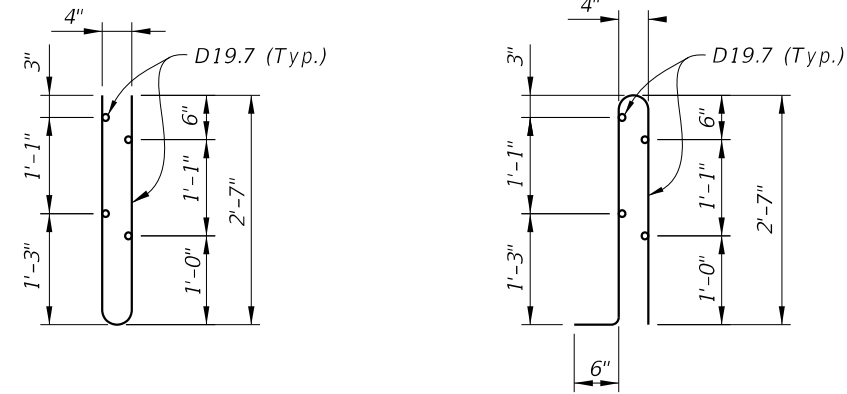
Other Affected Documents/Offices	Person Contacted	Affected (Yes/No)
Other Standard Plans		No
FDOT Design Manual		No
Standard Specifications		No
Basis of Estimates Manual		No
Approved Product List		No
Construction Office		No
Maintenance Office		No

**Implementation**

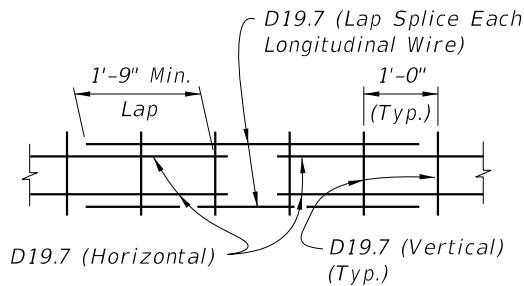
["FY-Standard Plans (Next Release)"]

**ALTERNATE REINFORCING (WELDED WIRE REINF.) DETAILS**

NOTE: Place wire panels to minimize the end overhang. End Overhangs greater than 4<sup>3</sup>/<sub>4</sub>" are not permitted.



**WELDED WIRE REINFORCEMENT (WWR)**

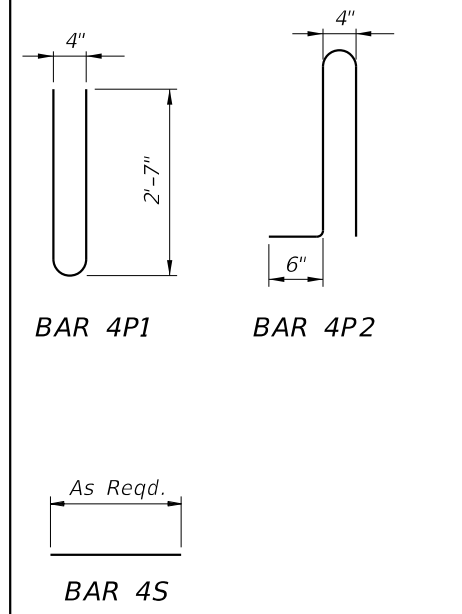


**SPLICE DETAIL**  
(Between WWR Sections)

**CONVENTIONAL REINFORCING STEEL BENDING DIAGRAMS**

**BILL OF REINFORCING STEEL**

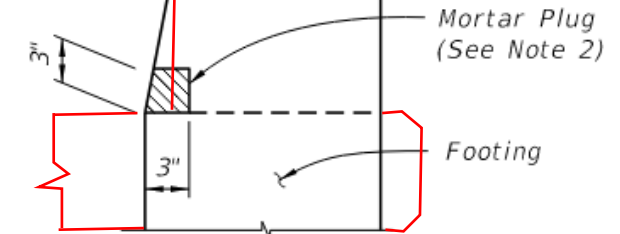
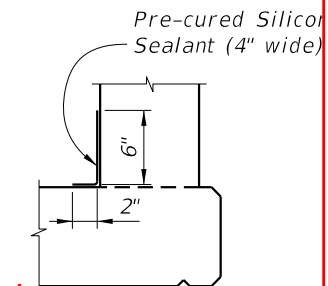
MARK	SIZE	LENGTH
P1	4	5'-6"
P2	4	6'-0"
S	4	As Reqd.



**REINFORCING STEEL NOTES:**

1. All bar dimensions in the bending diagrams are out to out.
2. The reinforcement for the parapet on a retaining wall shall be the same as detailed above for a 8" deck.
3. All reinforcing steel at the open joints shall have a 2" minimum cover.
4. Bars 4S may be continuous or spliced at the construction joints. Bar splices for Bars 4S shall be a minimum of 1'-8".
5. Bars 4P2 may be used in lieu of Bars 4P1.
6. At the option of the Contractor deformed WWR may be used in lieu of all Bars 4P or 4P2 and 4S.

**Option I**  
~~DETAIL "A" - SECTION~~  
~~AT INTERMEDIATE OPEN JOINT~~



**Option II**  
~~DETAIL "A" - SECTION~~  
~~AT OPEN JOINT~~  
(Alternative Mortar Plug at Open Joint)

**INTERMEDIATE JOINT SEAL NOTE:**

1. At Intermediate Open Joints, seal the lower 6" portion of the open joint with Pre-cured Silicone Sealant meeting the requirements of Specification Section 932.
2. Apply sealant prior to any Class V finish coating and remove all curing compound and loose material from the surface prior to application of bonding agent.
3. The cost of the Pre-cured Silicone Sealant shall be included in the Contract Unit Price for the Concrete Parapet.
4. As an alternative option, a mortar plug may be used to seal the joint as shown in the mortar plug detail and in accordance with Specification Section 400.

ITEM	UNIT	QUANTITY
Concrete	CY/LF	0.056
Reinforcing Steel (P1 & S)	LB/FT	6.35
Reinforcing Steel (P2 & S)	LB/FT	6.68

(The above quantities are based on a deck with a 2% cross slope)

10/17/2024 10:36:24 AM

2026-27

LAST REVISION	DESCRIPTION:
11/01/18	
11/01/25	

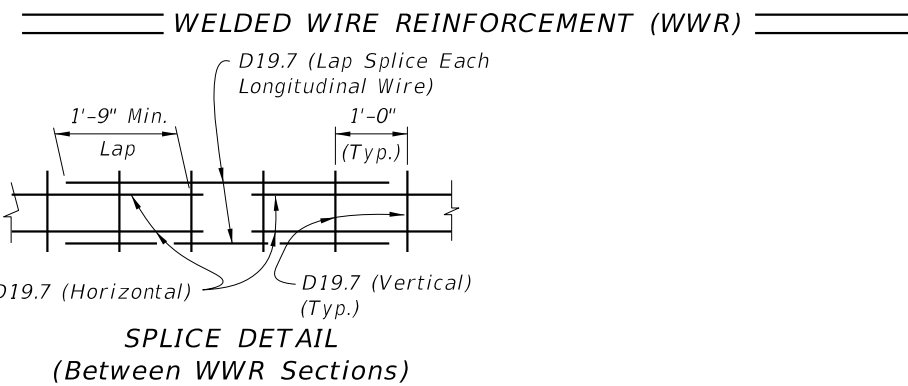
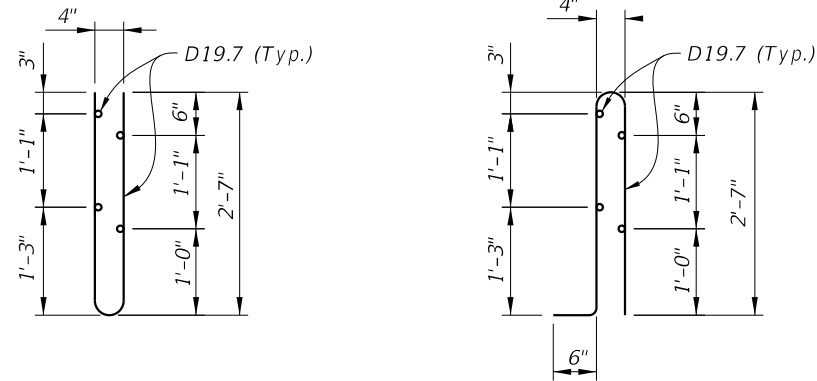
**FDOT**  
FY ~~2025-26~~  
STANDARD PLANS

**27" CONCRETE PARAPET WITH PEDESTRIAN/BICYCLE BULLET RAILING**

INDEX	SHEET
521-820	2 of 2

**ALTERNATE REINFORCING (WELDED WIRE REINF.) DETAILS**

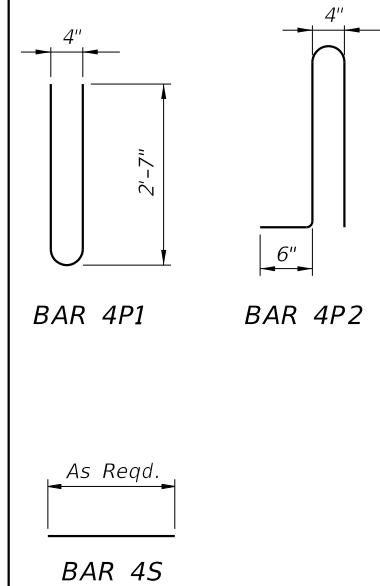
NOTE: Place wire panels to minimize the end overhang. End Overhangs greater than 4 3/4" are not permitted.



**CONVENTIONAL REINFORCING STEEL BENDING DIAGRAMS**

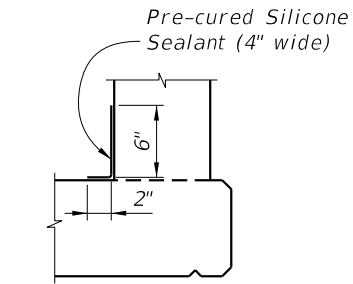
**BILL OF REINFORCING STEEL**

MARK	SIZE	LENGTH
P1	4	5'-6"
P2	4	6'-0"
S	4	As Reqd.

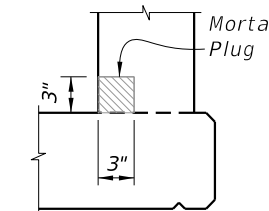


**INTERMEDIATE JOINT SEAL NOTE:**

- At Intermediate Open Joints, seal the lower 6" portion of the open joint with Pre-cured Silicone Sealant meeting the requirements of Specification Section 932.
- Apply sealant prior to any Class V finish coating and remove all curing compound and loose material from the surface prior to application of bonding agent.
- The cost of the Pre-cured Silicone Sealant shall be included in the Contract Unit Price for the Concrete Parapet.
- As an alternative option, a mortar plug may be used to seal the joint as shown in the mortar plug detail and in accordance with Specification Section 400.



**OPTION I**



**OPTION II**

(Alternative Mortar Plug at Open Joint)

**DETAIL "A"**

**REINFORCING STEEL NOTES:**

- All bar dimensions in the bending diagrams are out to out.
- The reinforcement for the parapet on a retaining wall shall be the same as detailed above for a 8" deck.
- All reinforcing steel at the open joints shall have a 2" minimum cover.
- Bars 4S may be continuous or spliced at the construction joints. Bar splices for Bars 4S shall be a minimum of 1'-8".
- Bars 4P2 may be used in lieu of Bars 4P1.
- At the option of the Contractor deformed WWR may be used in lieu of all Bars 4P or 4P2 and 4S.

**ESTIMATED CONCRETE PARAPET QUANTITIES**

ITEM	UNIT	QUANTITY
Concrete	CY/LF	0.056
Reinforcing Steel (P1 & S)	LB/FT	6.35
Reinforcing Steel (P2 & S)	LB/FT	6.68

(The above quantities are based on a deck with a 2% cross slope)

5/23/2025 12:27:10 PM

LAST REVISION	DESCRIPTION:
11/01/25	



**FY 2026-27  
STANDARD PLANS**

**27" CONCRETE PARAPET WITH  
PEDESTRIAN/BICYCLE BULLET RAILING**

INDEX SHEET  
**521-820 2 of 2**