

Origination Form
Proposed Revisions to a Standard Plans Index

Originator:	Turley, Joshua	Index Number:	455-031
Date:	5/15/2025	Sheet Number(s):	Sheet 1
E-mail:	Joshua.Turley@dot.state.fl.us	Index Title:	30" SQUARE PRESTRESSED CONCRETE PILE - HIGH MOMENT CAPACITY

Summary of the changes:

Sheet 1: Changed pitch spacing for spiral ties and removed errant 11' dimension which was a CAD error.

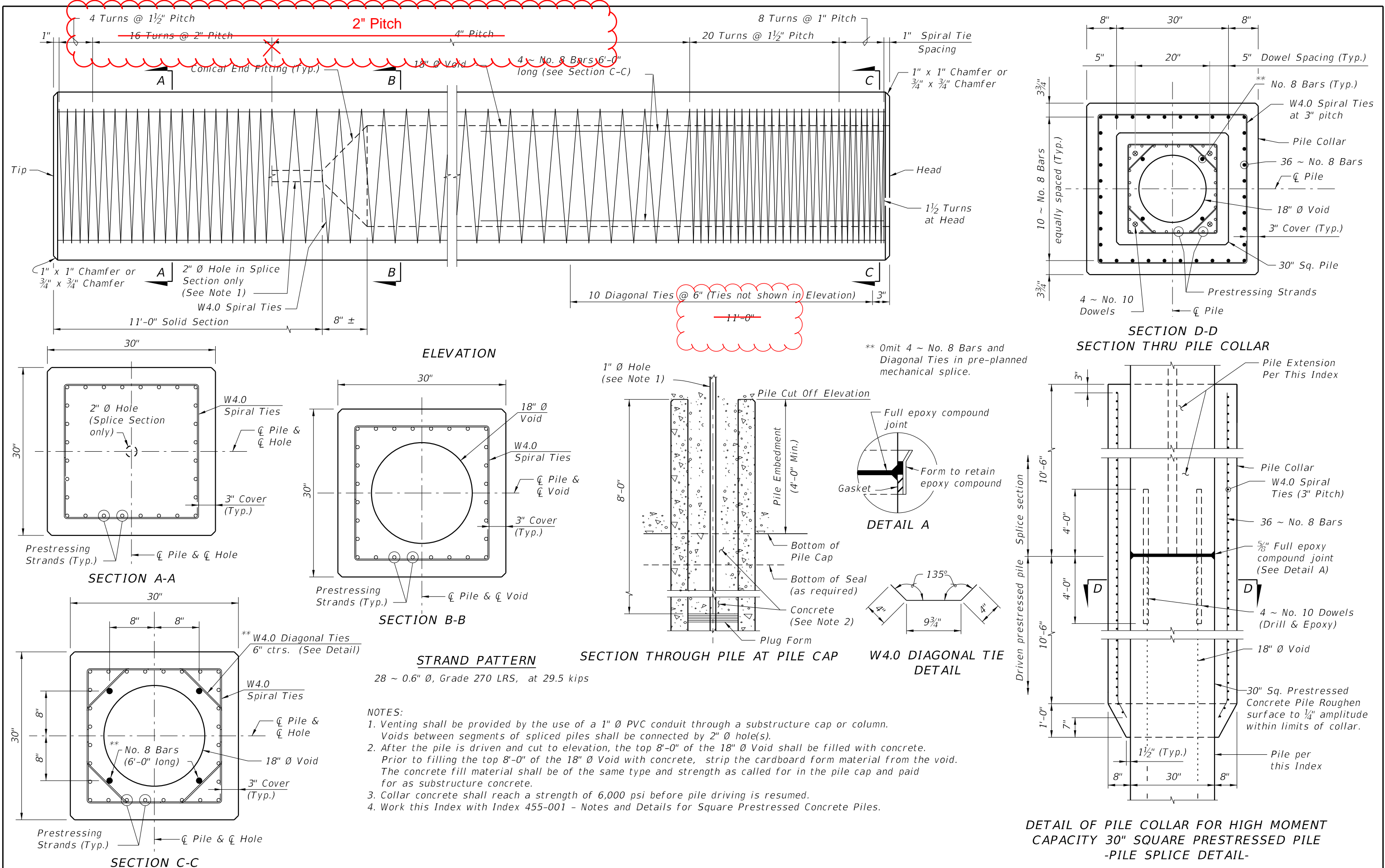
Commentary/Background:

Vertical cracking has been observed in hollow core prestressed concrete piles, including 30-in. voided square HMC and conventional piles, and 60-in. hollow cylindrical piles, during installation and service. To address cracks frequently occur within the 4" stirrup pitch zone, a reduction in stirrup pitch to 2" is proposed to help mitigate cracking in these areas.

Other Affected Documents/Offices	Person Contacted	Affected (Yes/No)
Other Standard Plans		No
FDOT Design Manual		No
Standard Specifications		No
Basis of Estimates Manual		No
Approved Product List		No
Construction Office		No
Maintenance Office		No

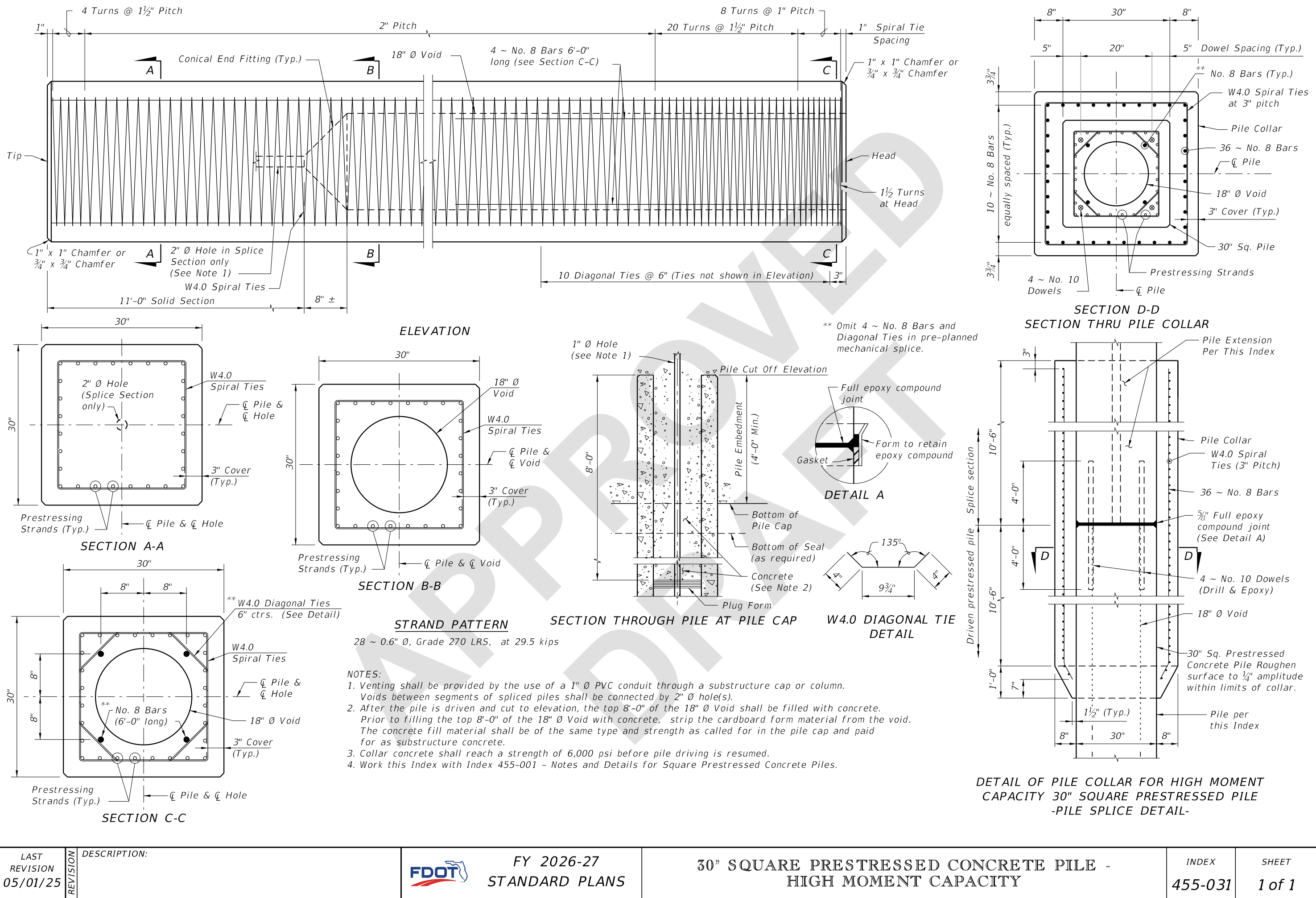
Implementation

["FY-Standard Plans (Next Release)"]



10/17/2024 10:01:48 AM

LAST REVISION 11/01/23 11/01/25	DESCRIPTION: 	<div data-bbox="1000 1905 1134 1965"> </div> <div data-bbox="1174 1840 1485 1975"> <p>2026-27</p> <p>FY 2025-26</p> <p>STANDARD PLANS</p> </div>	<div data-bbox="1631 1895 2548 1975"> <p>30" SQUARE PRESTRESSED CONCRETE PILE - HIGH MOMENT CAPACITY</p> </div>	INDEX 455-031	SHEET 1 of 1
---------------------------------------	----------------------	---	---	------------------	-----------------



LAST REVISION 05/01/25	DESCRIPTION:	 FY 2026-27 STANDARD PLANS	30" SQUARE PRESTRESSED CONCRETE PILE - HIGH MOMENT CAPACITY	INDEX 455-031	SHEET 1 of 1
------------------------------	--------------	--	--	------------------	-----------------