

**Origination Form**  
Proposed Revisions to a Standard Plans Index

<b>Originator:</b>	Turley, Joshua	<b>Index Number:</b>	450-453
<b>Date:</b>	1/10/2025	<b>Sheet Number(s):</b>	1
<b>E-mail:</b>	Joshua.Turley@dot.state.fl.us	<b>Index Title:</b>	18" FLORIDA SLAB BEAM

**Summary of the changes:**

Sheet 1: Added missing 4L bar to Optional Exterior Beam, Updated to the 5Z to increase their length.

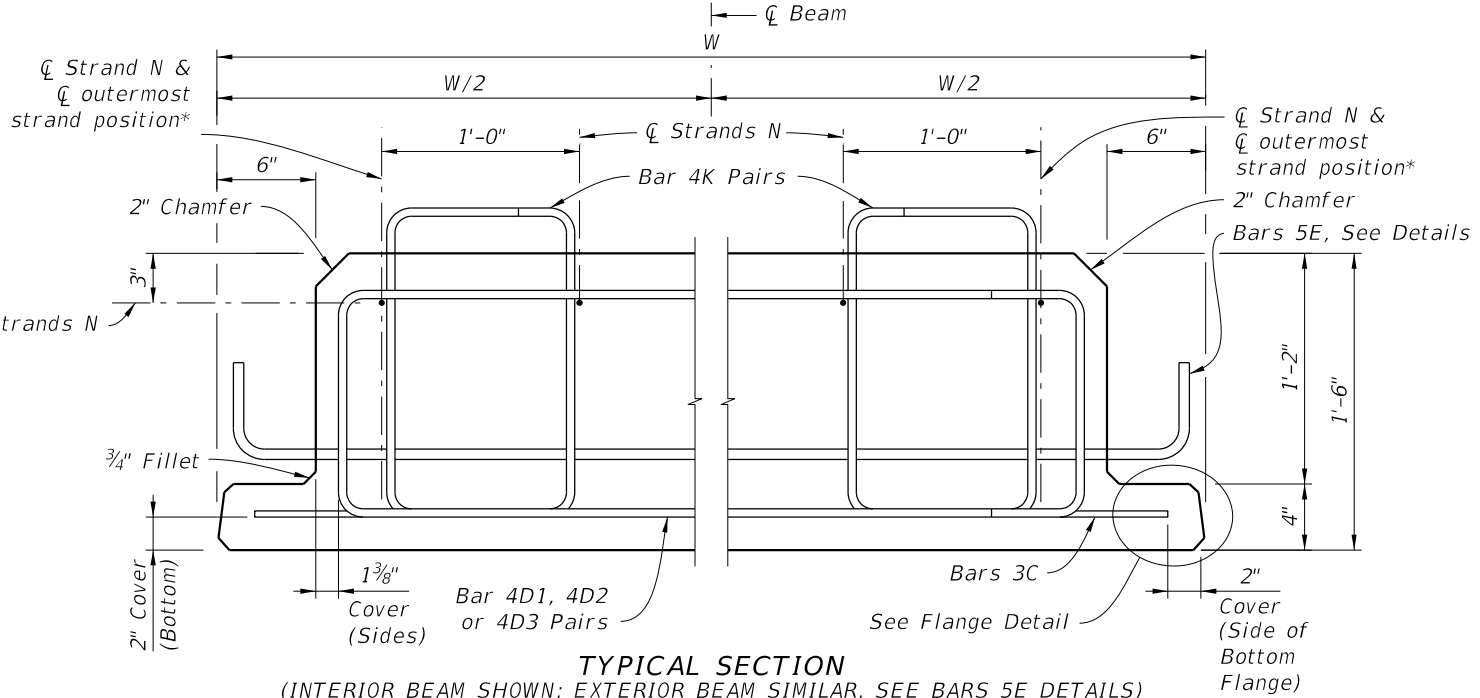
**Commentary/Background:**

The 4L bar is required to provide reinforcing for the portion of concrete that is unreinforced when moving to the Option Exterior Edge Beam while keeping the same reinforcing as the typical section. To improve resistance to increased tensile stresses from recent design checks using FDOT's Prestressed Beam program, and mitigate the risk of cracking, the standard detail is being updated to extend the length of the existing 5Z bars.

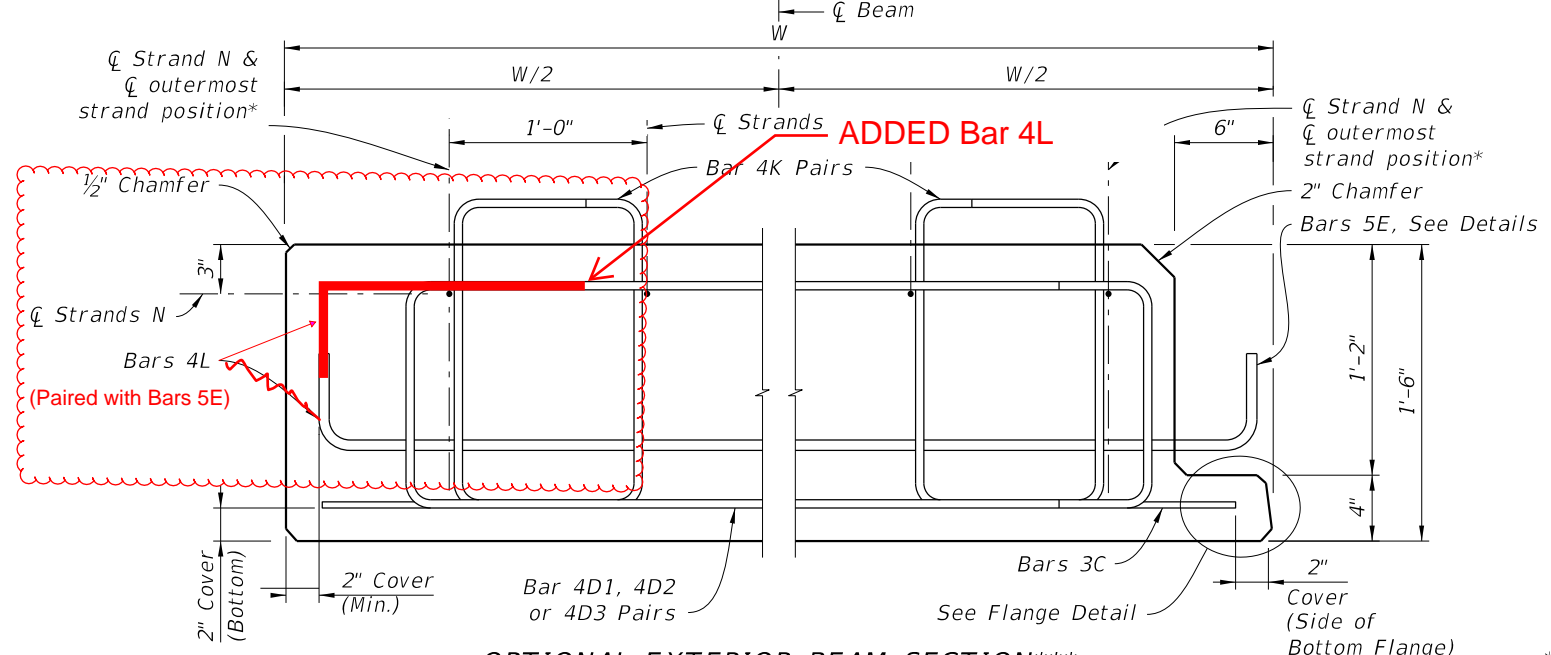
Other Affected Documents/Offices	Person Contacted	Affected (Yes/No)
Other Standard Plans		No
FDOT Design Manual		No
Standard Specifications		No
Basis of Estimates Manual		No
Approved Product List		No
Construction Office		No
Maintenance Office		No

**Implementation**

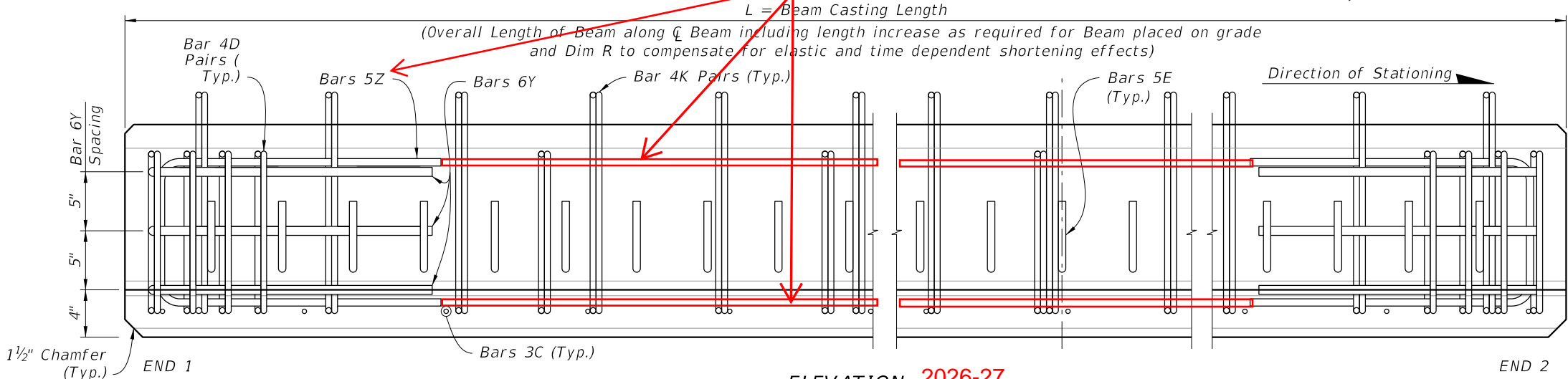
["FY-Standard Plans (Next Release)"]



**TYPICAL SECTION**  
(INTERIOR BEAM SHOWN; EXTERIOR BEAM SIMILAR, SEE BARS 5E DETAILS)



**OPTIONAL EXTERIOR BEAM SECTION\*\*\***  
Lengthen these 5z bars

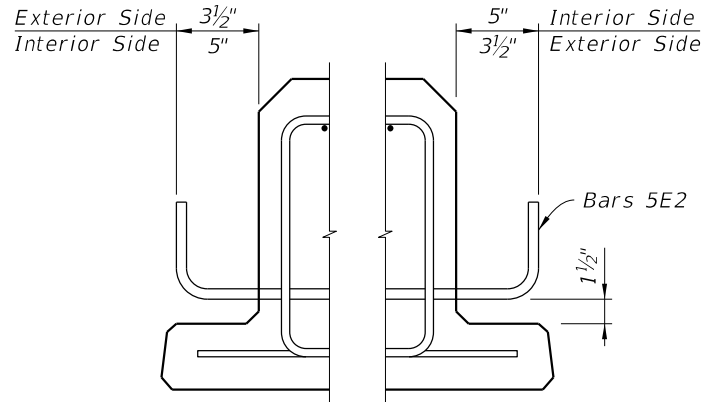


**ELEVATION 2026-27**

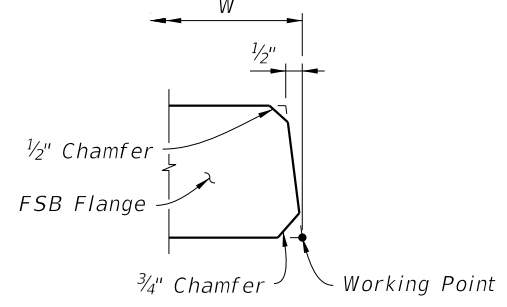
**NOTES:**  
Work this Index with Index 450-450 and Florida Slab Beams - Table of Variables in Structures Plans.  
For Dimensions C, D, E, L, R, W & Y and Angle  $\theta$ , see Florida Slab Beam - Table of Variables in Structures Plans.  
For referenced notes, see Index 450-450, Sheet 1.

\* For  $\phi$  of outermost strand positions, see corresponding Strand Pattern on Florida Slab Beams - Table of Variables in Structures Plans.

\*\* At the Contractor's option, the beam as shown for Interior Beams may be used for Exterior Beams and the Bars 5E field bent on the exterior side of the beam to provide the specified cover to the coping line.



**EXTERIOR BEAMS\*\***

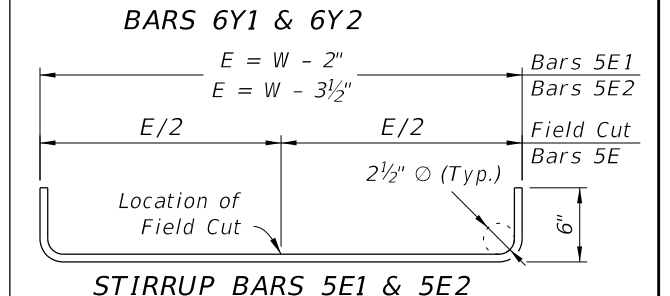
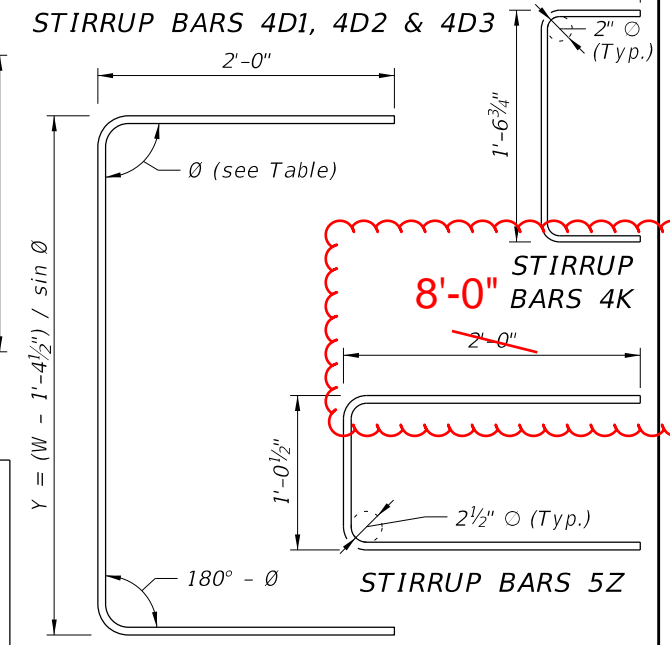
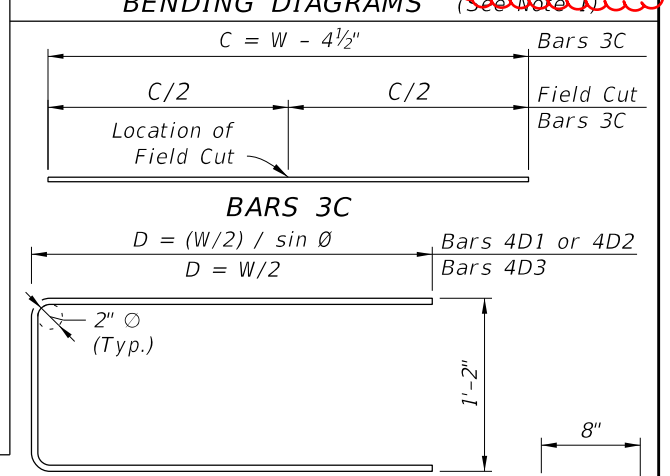


**FLANGE DETAIL**  
(TYPICAL BOTH SIDES OF FSB)

\*\*\* At the Contractor's option, the Optional Exterior Beam Section may be used.

**BILL OF REINFORCING STEEL FOR ONE BEAM ONLY**

MARK	SIZE	NOTE NUMBERS	NUMBER REQUIRED	LENGTH (NOTE 1)
C	3		See Table	Varies
D1	4	6	10 (End 1)	Varies
D2	4	6	10 (End 2)	Varies
D3	4		See Table	Varies
E1	5	7	See Table	Varies
E2	5	7	See Table	Varies
L	4	**	See Table	2'-0"
Note 3				
Y1	6	6	3 (End 1)	Varies
Y2	6	6	3 (End 2)	Varies
Z	5		6	17'-0 1/2"



10/17/2024 9:53:46 AM

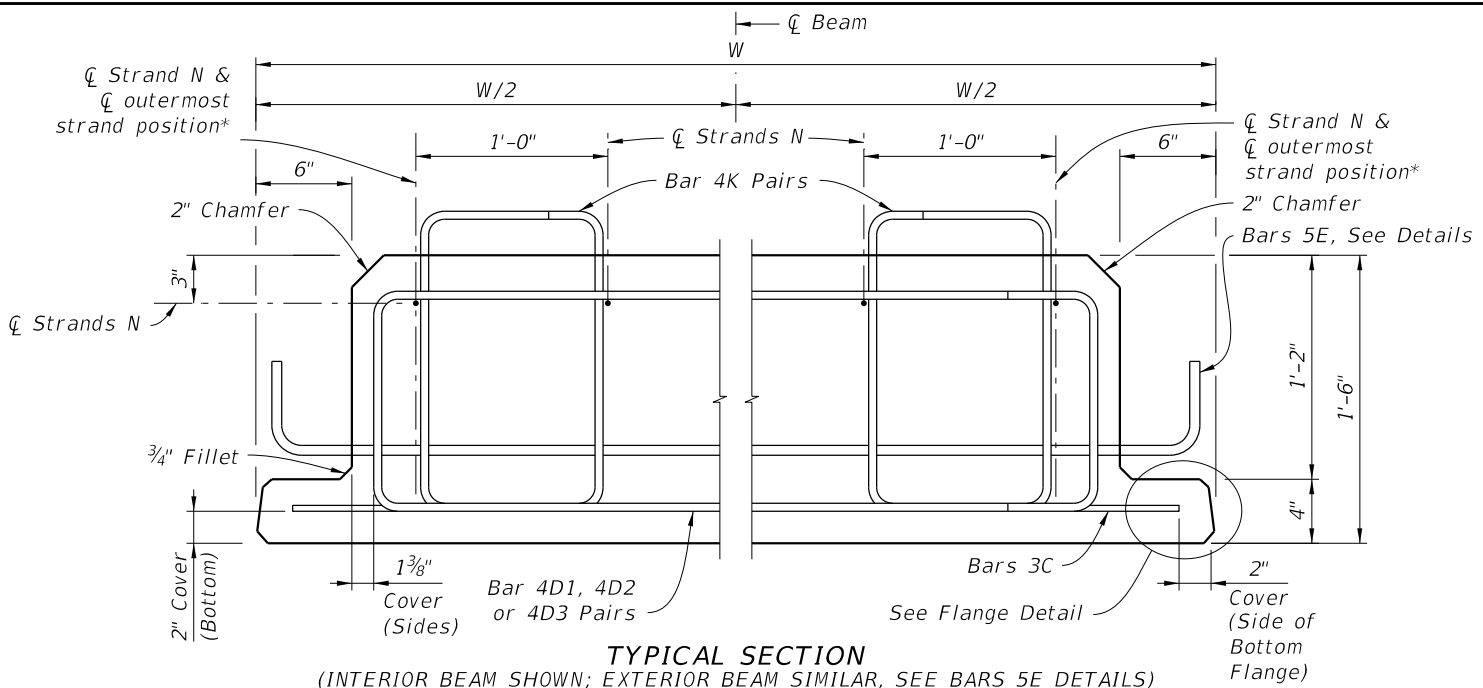
LAST REVISION	DESCRIPTION:
11/01/20	11/01/25



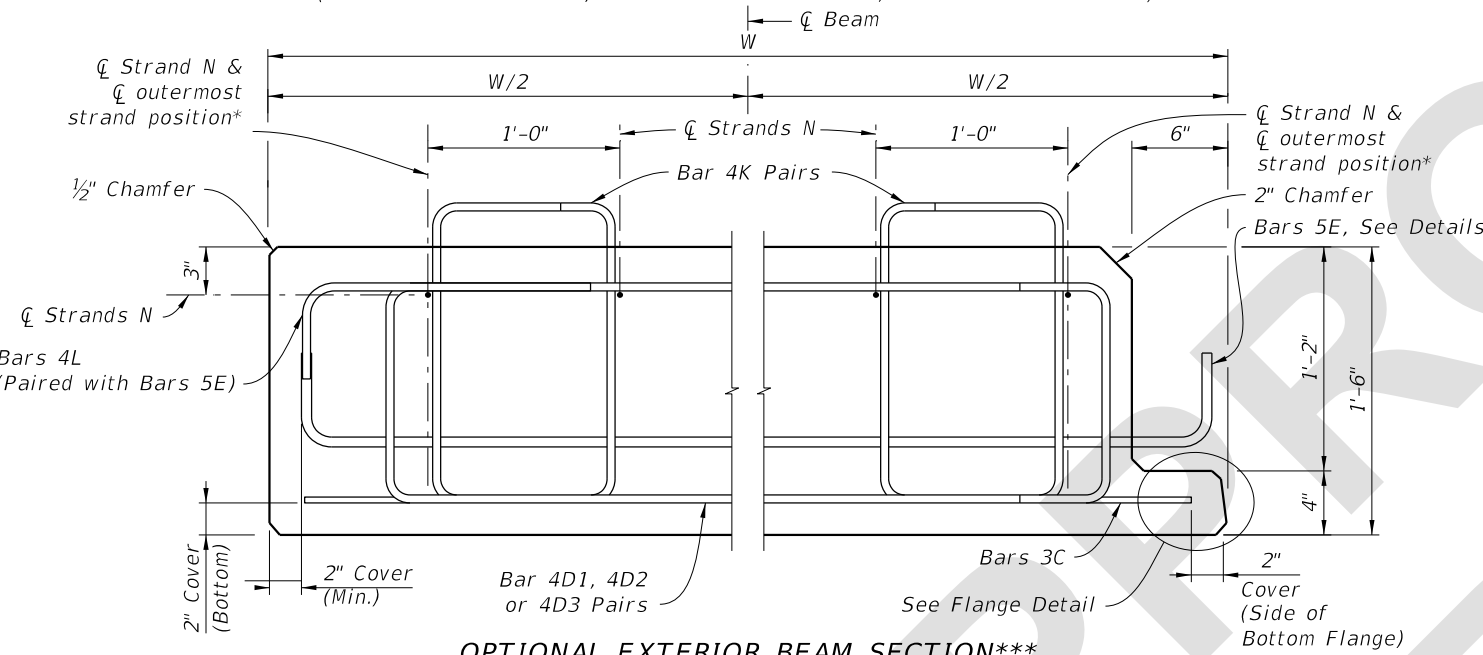
**FY 2025-26**  
**STANDARD PLANS**

**18" FLORIDA SLAB BEAM**

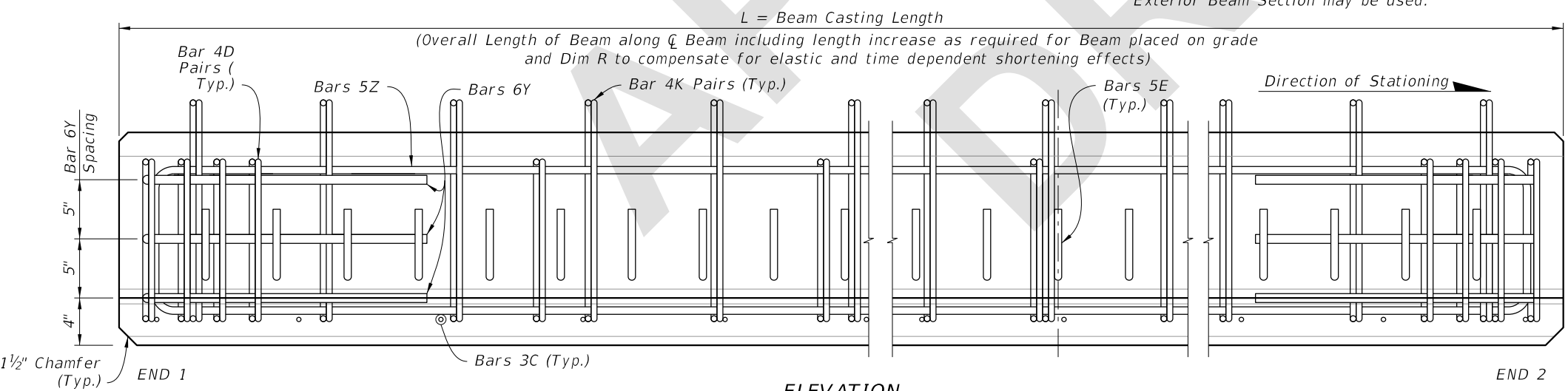
INDEX	SHEET
450-453	1 of 1



**TYPICAL SECTION**  
(INTERIOR BEAM SHOWN; EXTERIOR BEAM SIMILAR, SEE BARS 5E DETAILS)



**OPTIONAL EXTERIOR BEAM SECTION\*\*\***

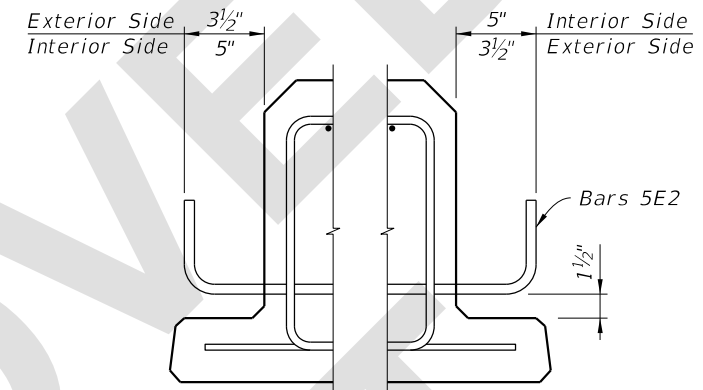


**ELEVATION**

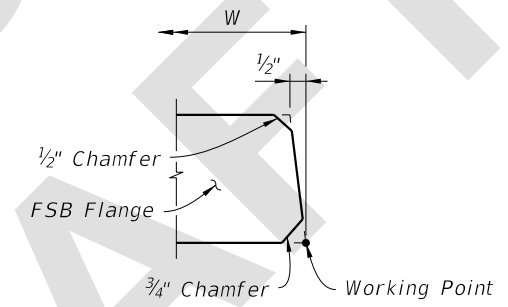
**NOTES:**  
Work this Index with Index 450-450 and Florida Slab Beams - Table of Variables in Structures Plans.  
For Dimensions C, D, E, L, R, W & Y and Angle  $\theta$ , see Florida Slab Beam - Table of Variables in Structures Plans.  
For referenced notes, see Index 450-450, Sheet 1.

\* For  $\phi$  of outermost strand positions, see corresponding Strand Pattern on Florida Slab Beams - Table of Variables in Structures Plans.

\*\* At the Contractor's option, the Detail as shown for Interior Beams may be used for Exterior Beams and the Bars 5E field bent on the exterior side of the Beam to provide the specified cover to the coping line.



**EXTERIOR BEAMS\*\***

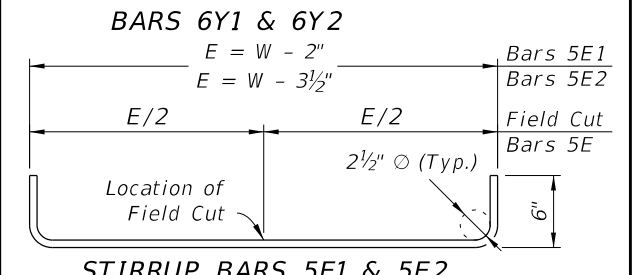
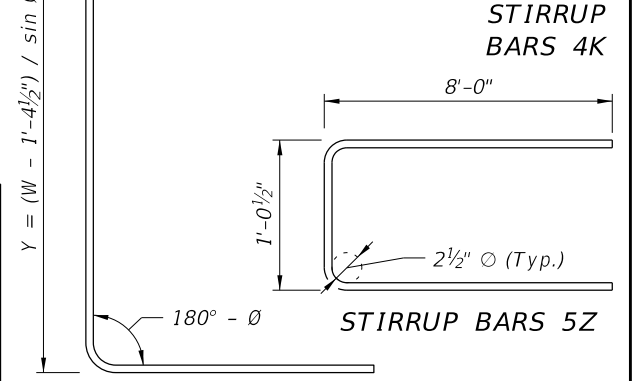
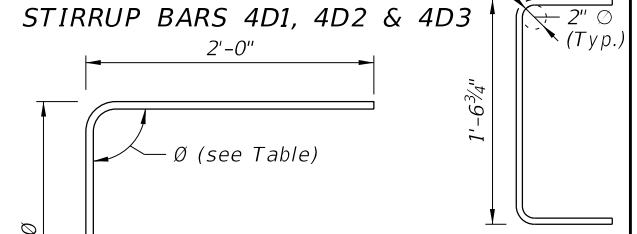
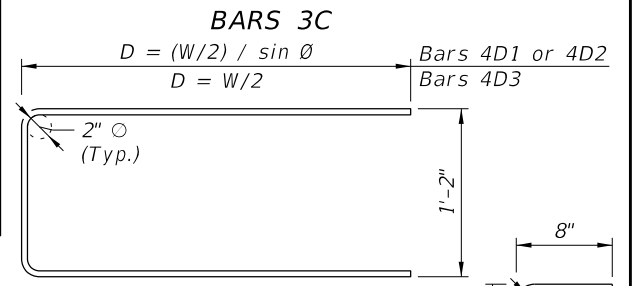
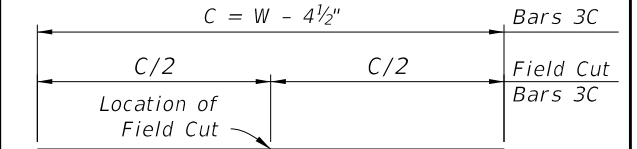


**FLANGE DETAIL**  
(TYPICAL BOTH SIDES OF FSB)

\*\*\* At the Contractor's option, the Optional Exterior Beam Section may be used.

BILL OF REINFORCING STEEL FOR ONE BEAM ONLY				
MARK	SIZE	NOTE NUMBERS	NUMBER REQUIRED	LENGTH (NOTE 1)
C	3		See Table	Varies
D1	4	6	10 (End 1)	Varies
D2	4	6	10 (End 2)	Varies
D3	4		See Table	Varies
E1	5	7	See Table	Varies
E2	5	7	See Table	Varies
K	4		See Table	2'-11"
L	4	**	See Table	2'-0"
N	See Note 3	3	4	Varies
Y1	6	6	3 (End 1)	Varies
Y2	6	6	3 (End 2)	Varies
Z	5		6	17'-0 1/2"

**BENDING DIAGRAMS** (See Note 1)



**STIRRUP BARS 5E1 & 5E2**

6/12/2025 9:30:44 AM

LAST REVISION	DESCRIPTION:
11/01/25	