

**Origination Form**  
Proposed Revisions to a Standard Plans Index

<b>Originator:</b>	Pinkham, Andrew	<b>Index Number:</b>	430-030
<b>Date:</b>	6/3/2025	<b>Sheet Number(s):</b>	2
<b>E-mail:</b>	andrew.pinkham@dot.state.fl.us	<b>Index Title:</b>	Straight Concrete Endwalls Single and Multiple Pipe

**Summary of the changes:**

Sheet 2: Added SECTION A-A to show Option I or II.

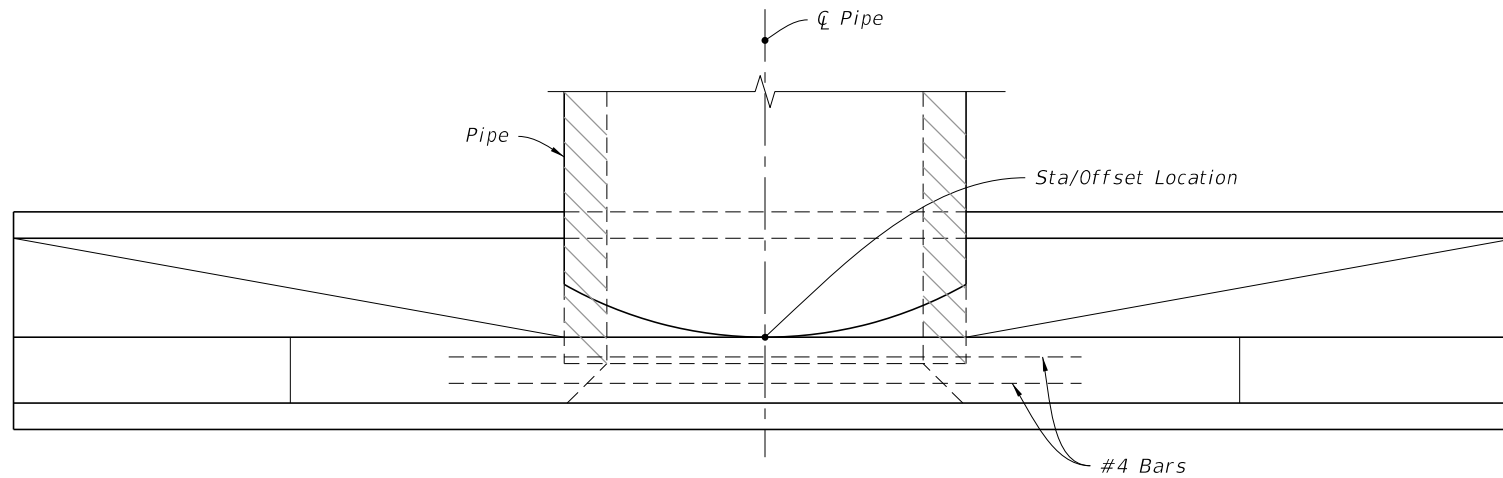
**Commentary/Background:**

Addition of alternate to hole forming details and minimum beam height above the opening. Issues with delivered product and at request of Industry. Request came through the Precast Concrete Structures Association to Andrew Pinkham at SMO, through Drainage Design and was signed as an Approved Shop Drawing by State Drainage Engineer.

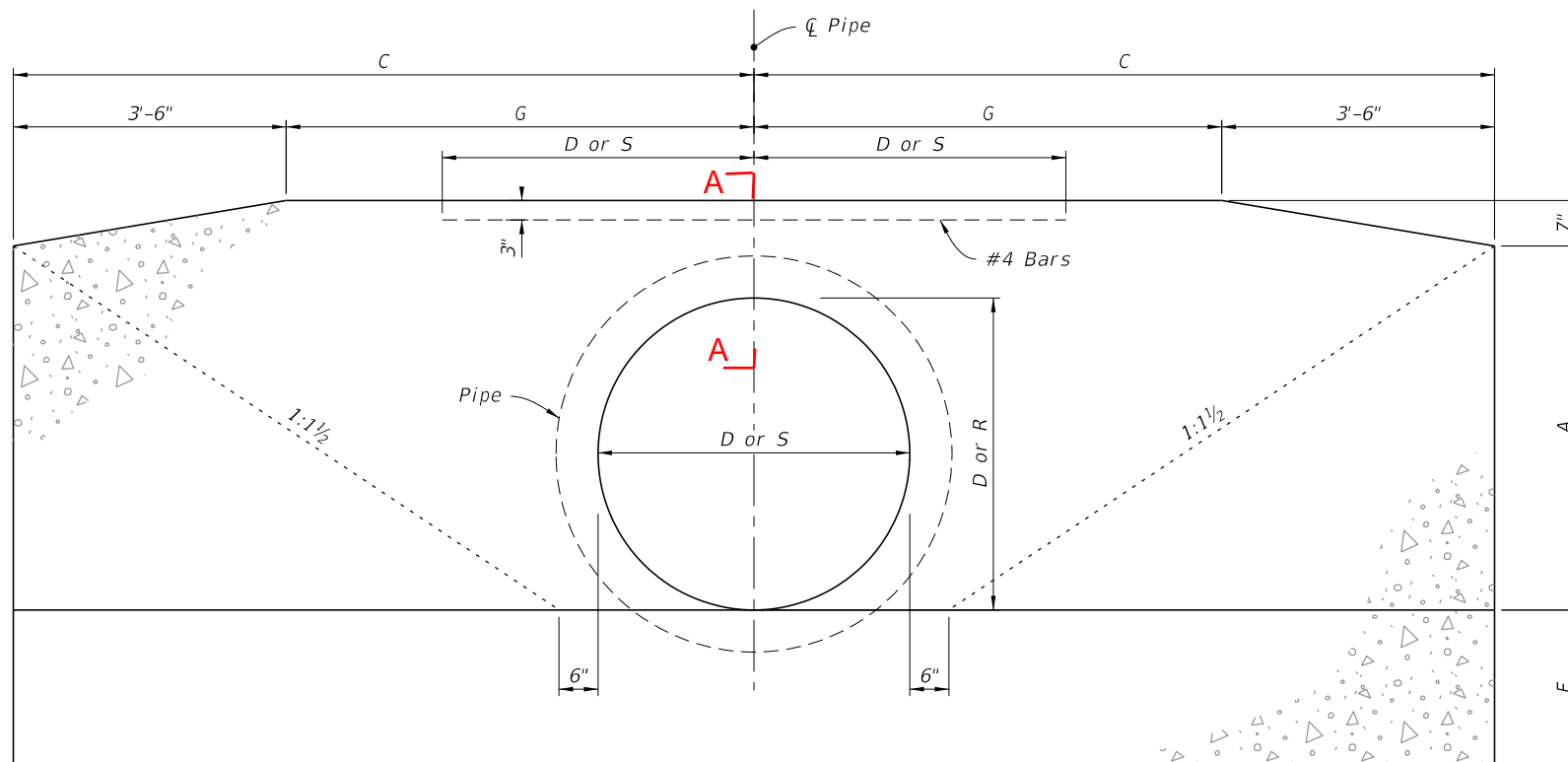
Other Affected Documents/Offices	Person Contacted	Affected (Yes/No)
Other Standard Plans		No
FDOT Design Manual		No
Standard Specifications		No
Basis of Estimates Manual		No
Approved Product List		No
Construction Office		No
Maintenance Office		No

**Implementation**

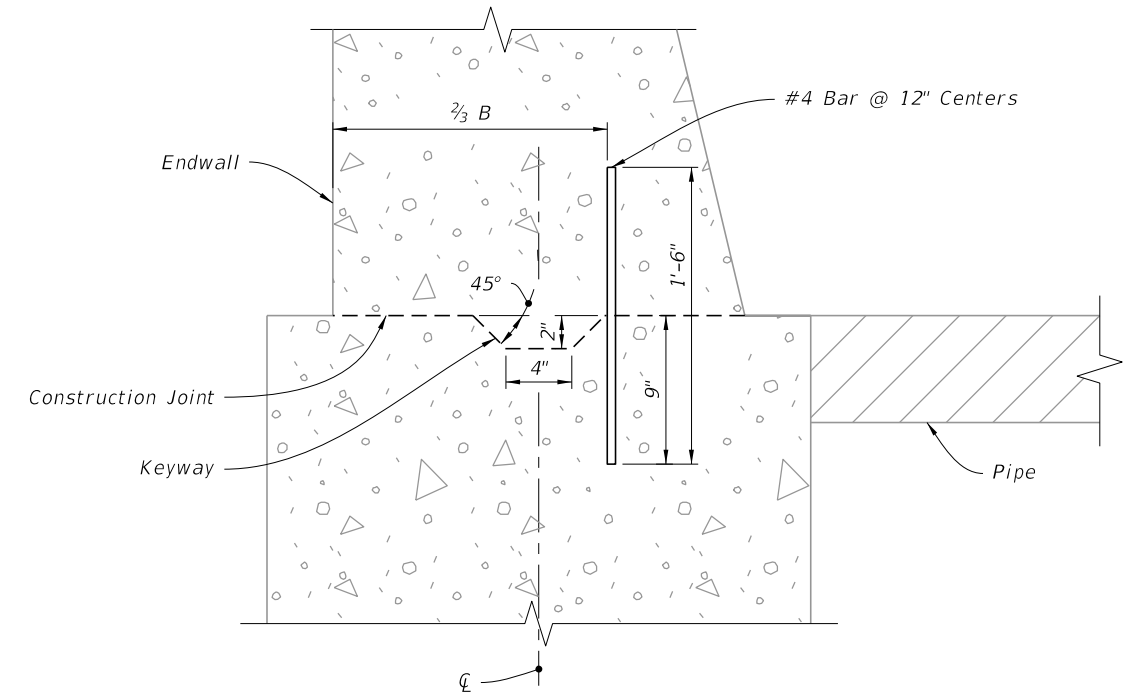
["FY-Standard Plans (Next Release)"]



PLAN

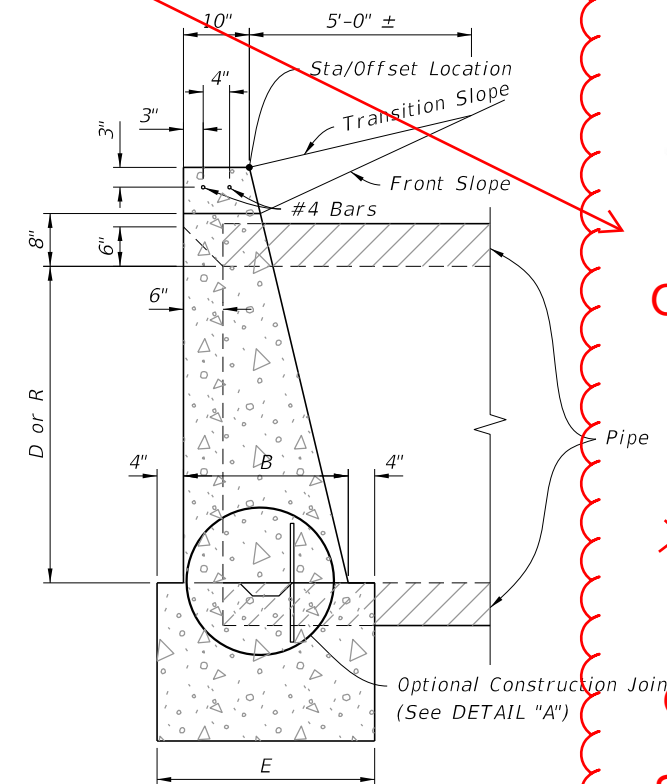


FRONT ELEVATION

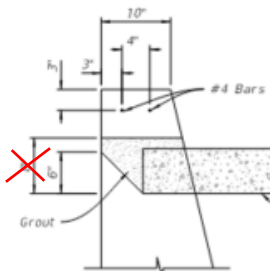
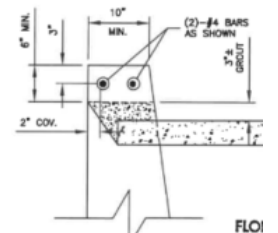


NOTE: Keyway and Dowels are required for optional construction joint.

ADDED:  
Section A-A to show  
Option I or II



SIDE ELEVATION

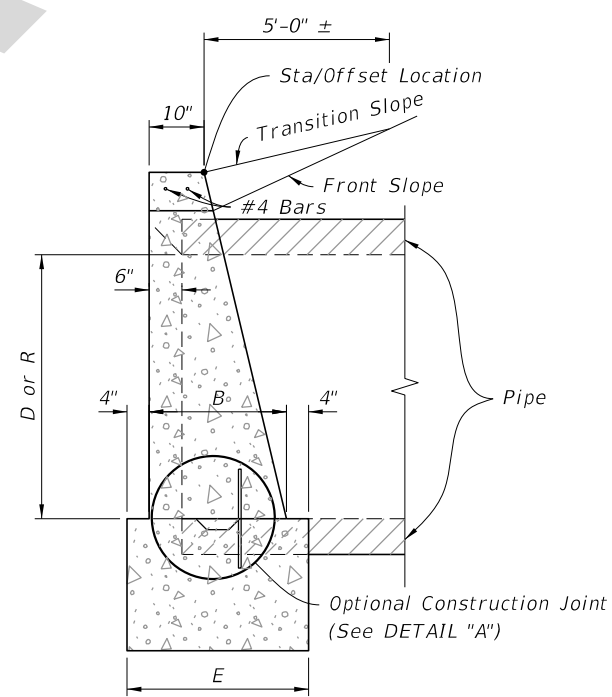
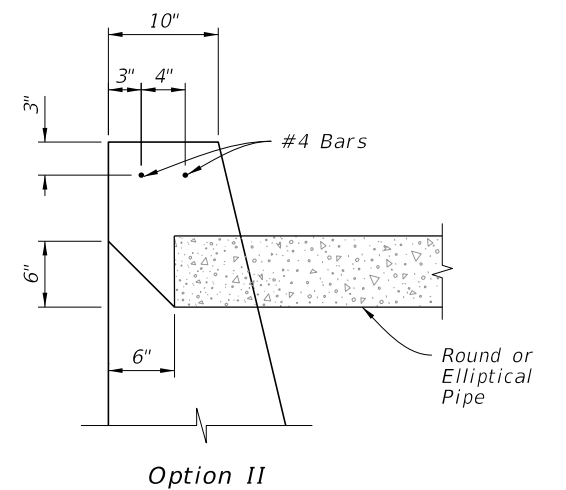
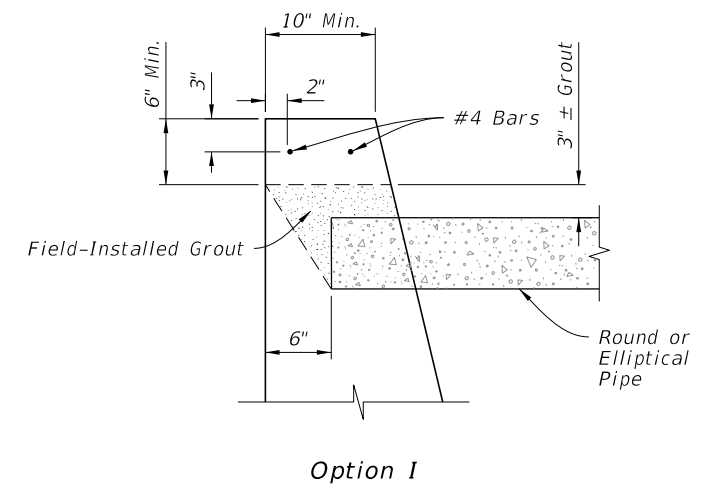
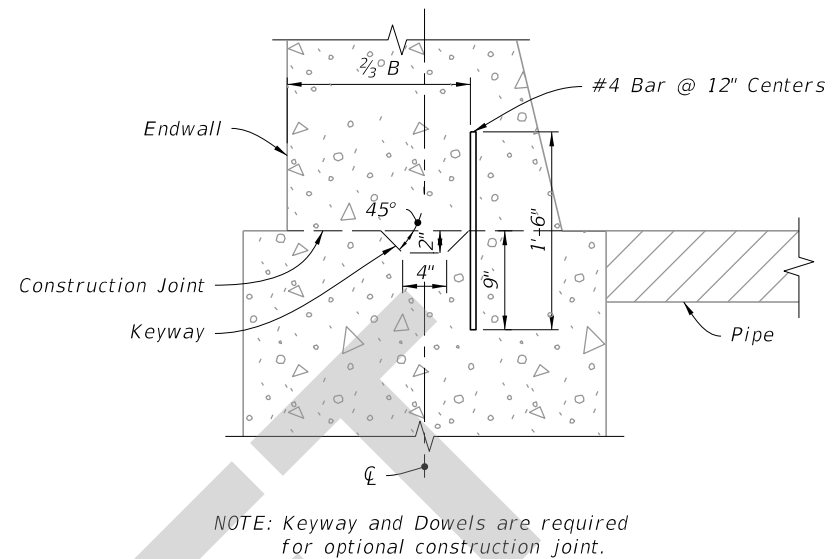
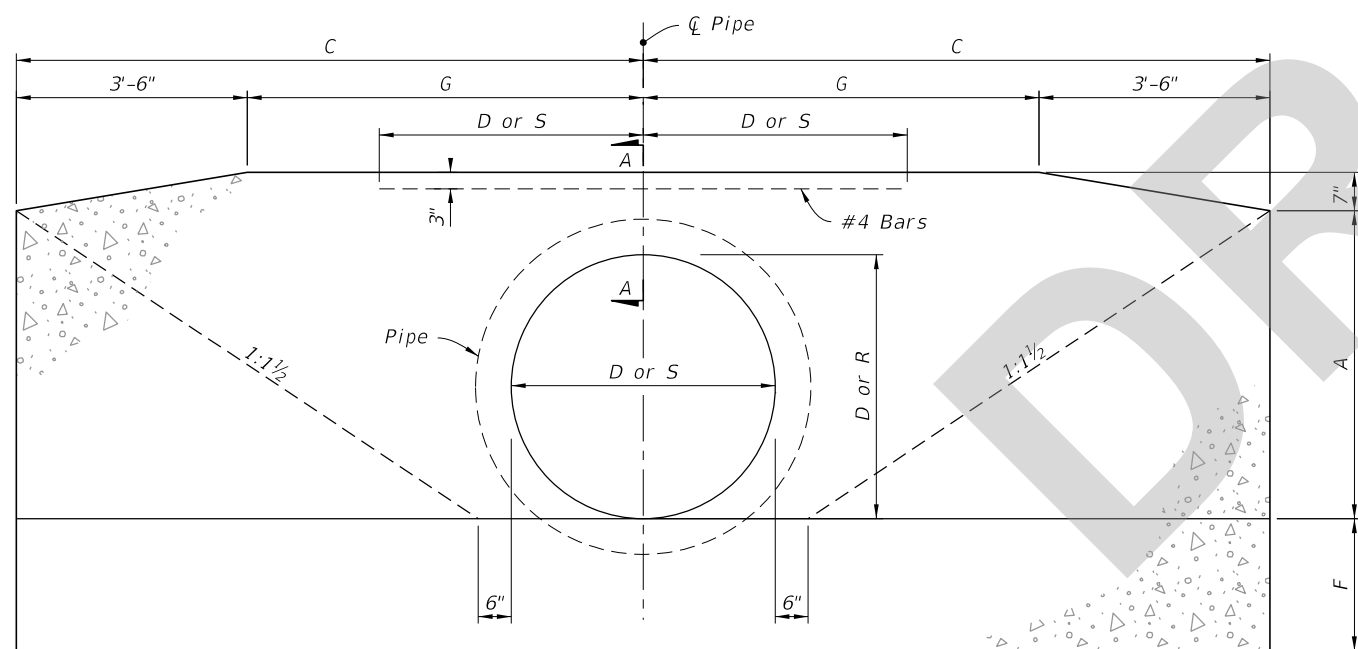
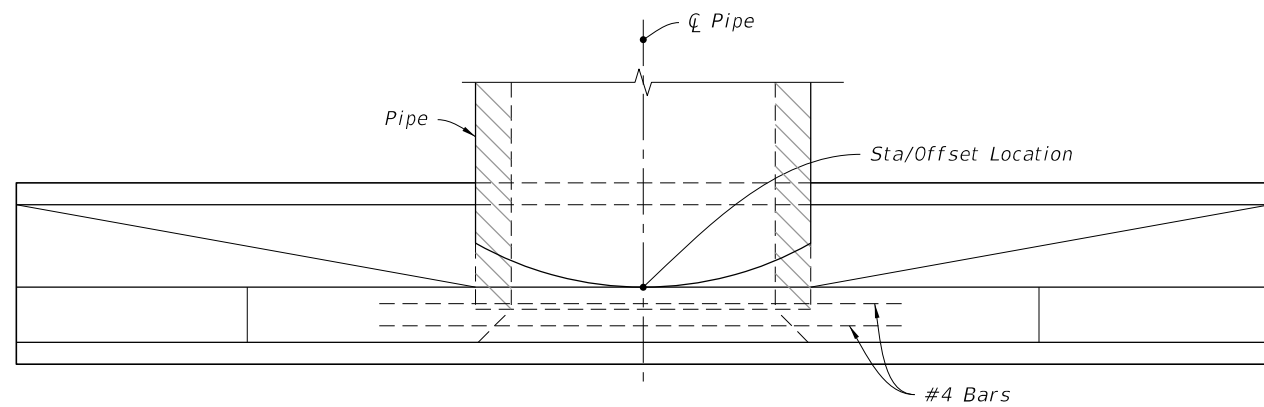


Section A-A

2026-27


CONCRETE ENDWALL DETAILS

LAST REVISION	DESCRIPTION:	FDOT	FY <del>2025-26</del> 2026-27	STRAIGHT CONCRETE ENDWALLS SINGLE AND MULTIPLE PIPE	INDEX	SHEET
11/01/19 11/01/25			STANDARD PLANS		430-030	2 of 4



SECTION A-A

## CONCRETE ENDWALL DETAILS

LAST REVISION 11/01/25	REVISION	DESCRIPTION:	 FY 2026-27 STANDARD PLANS	STRAIGHT CONCRETE ENDWALLS SINGLE AND MULTIPLE PIPE	INDEX 430-030	SHEET 2 of 4
------------------------------	----------	--------------	---	--	------------------	-----------------