

Origination Form
Proposed Revisions to a Standard Plans Index

Originator:	Turley, Joshua	Index Number:	102-230
Date:	5/15/2025	Sheet Number(s):	All Sheets
E-mail:	Joshua.Turley@dot.state.fl.us	Index Title:	TEMPORARY DETOUR BRIDGE STEEL PIPE PILE FOUNDATIONS

Summary of the changes:

Changed the Title of the index from "Foundations" to "Backwall Bent"

Commentary/Background:

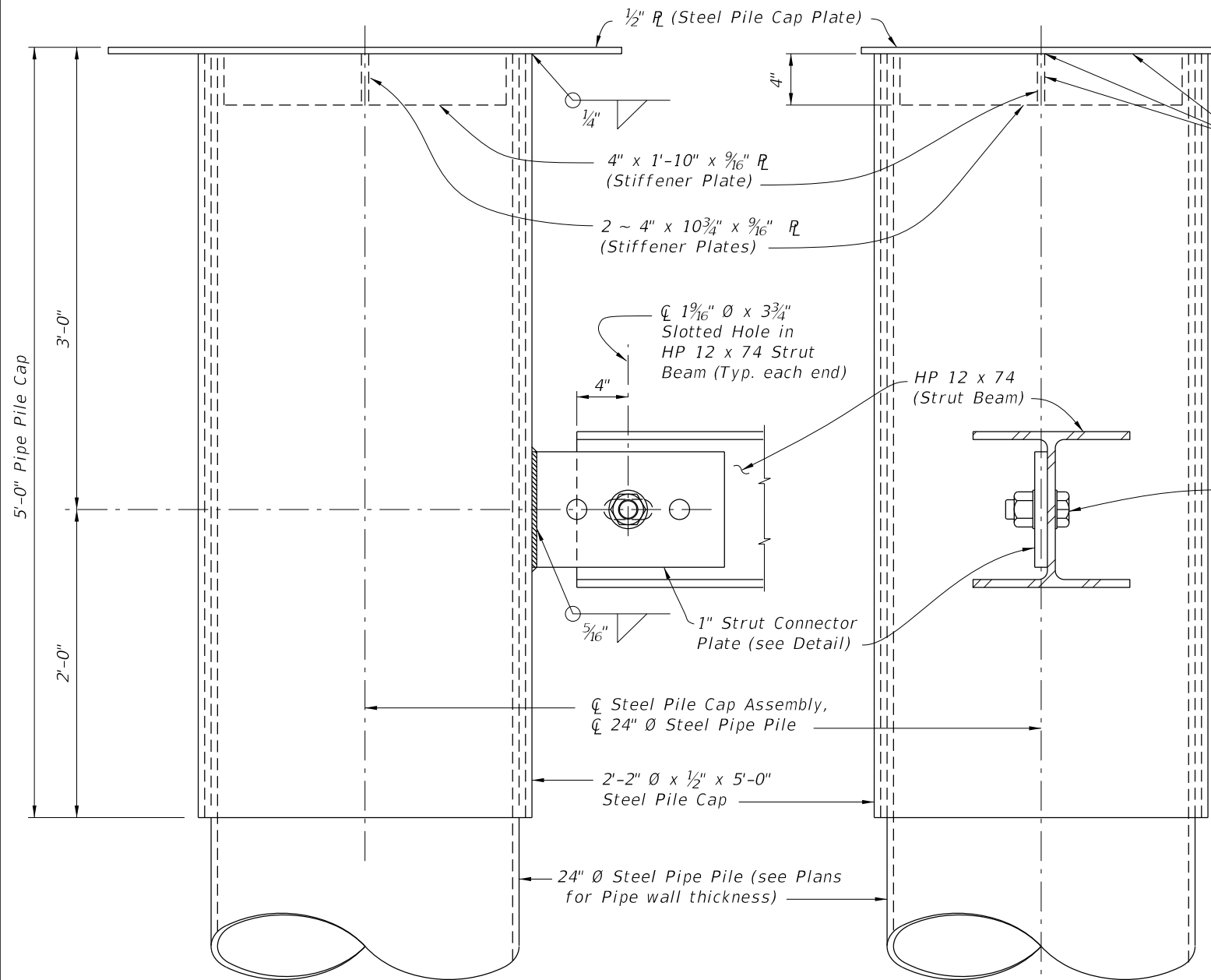
All: Updating sheet title to reflect the more precise terminology

Other Affected Documents/Offices	Person Contacted	Affected (Yes/No)
Other Standard Plans		No
FDOT Design Manual		No
Standard Specifications		No
Basis of Estimates Manual		No
Approved Product List		No
Construction Office		No
Maintenance Office		No

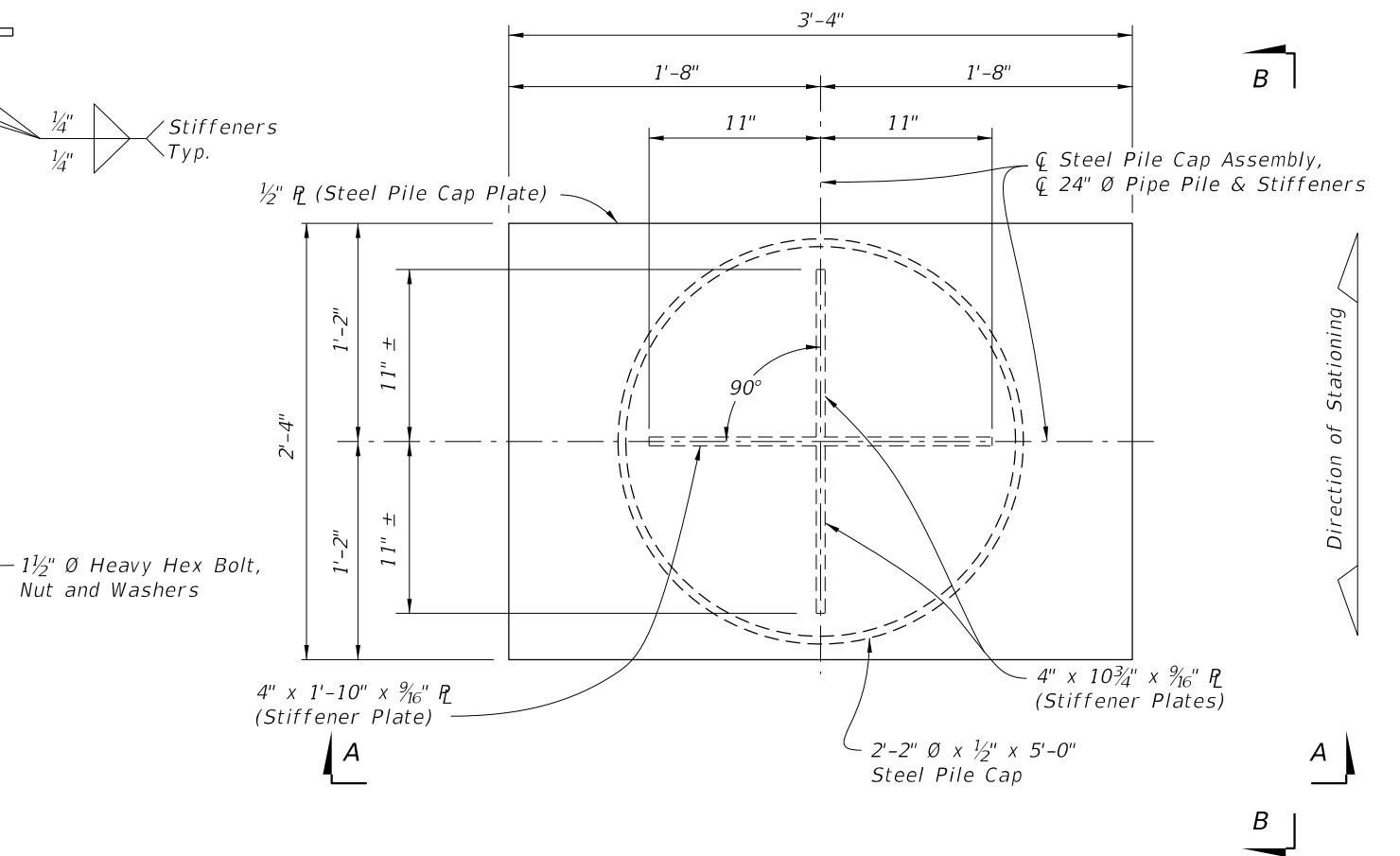
Implementation

["FY-Standard Plans (Next Release)"]

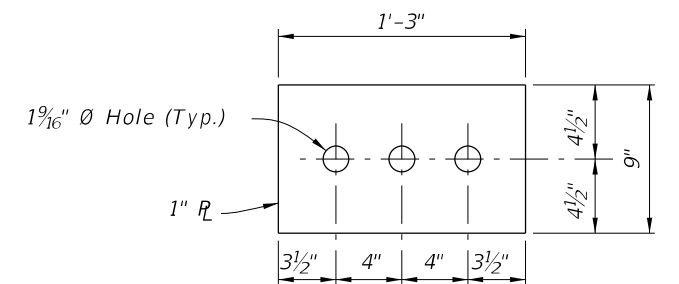
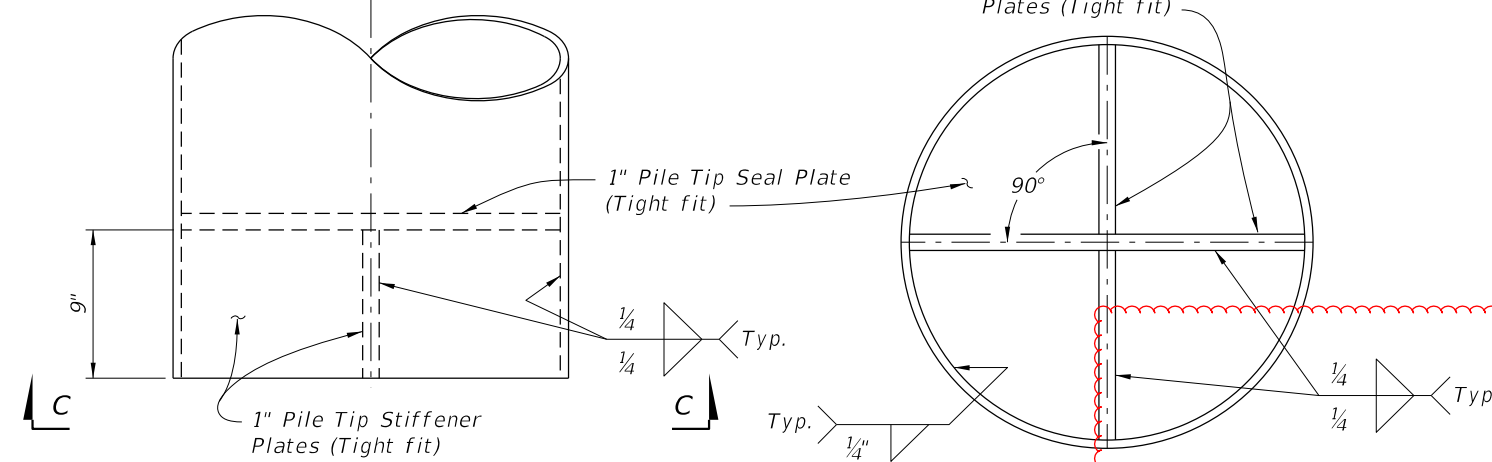
10/17/2024 8:02:56 AM



PARTIAL VIEW A-A



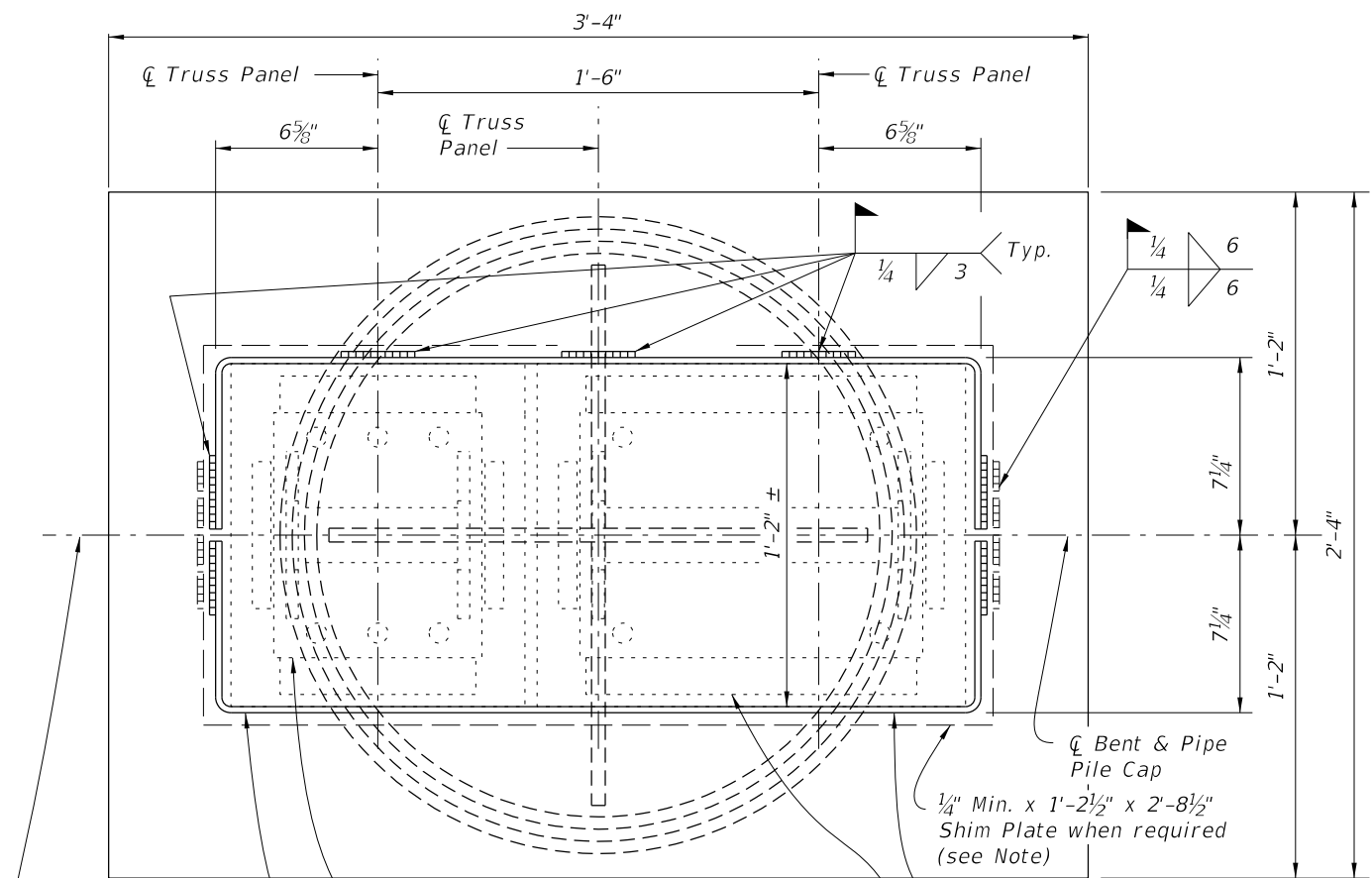
PLAN VIEW STEEL PILE CAP ASSEMBLY
(Bearing Plates and Bearing Keeper Bars not show for clarity)



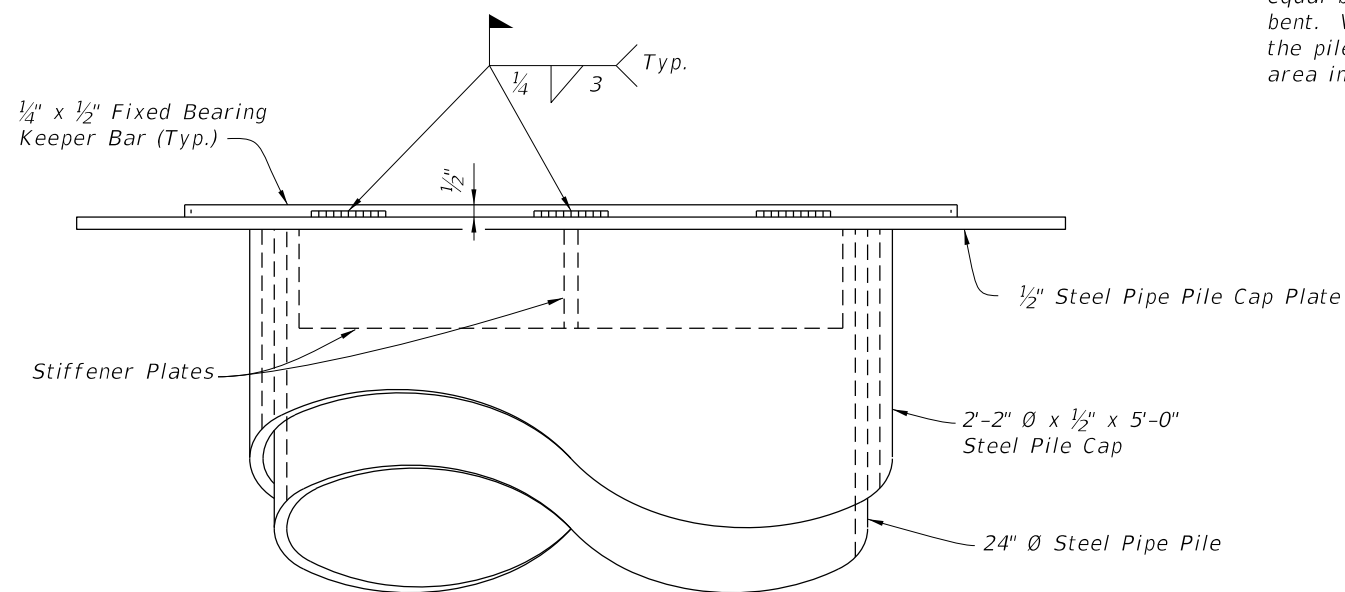
STRUT CONNECTOR PLATE DETAIL

LAST REVISION		DESCRIPTION:	FDOT	FY 2025-26	TEMPORARY DETOUR BRIDGE DETAILS STEEL PIPE PILE FOUNDATIONS	INDEX	SHEET
REVISION							
07/01/15						102-230	1 of 3
11/01/25				STANDARD PLANS			

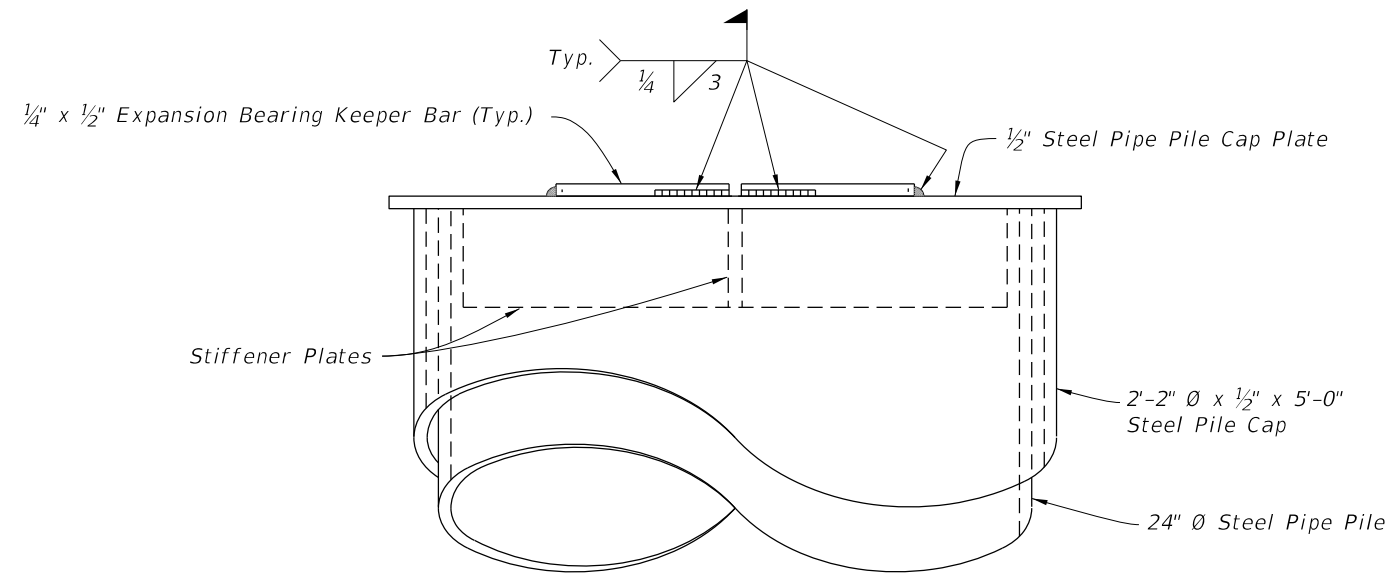
10/17/2024 8:03:11 AM



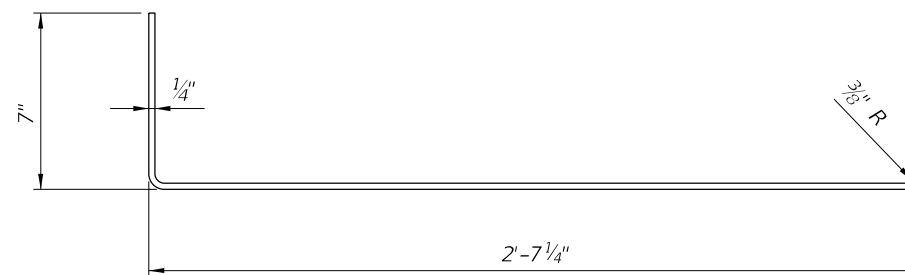
PARTIAL PLAN VIEW



PARTIAL ELEVATION VIEW



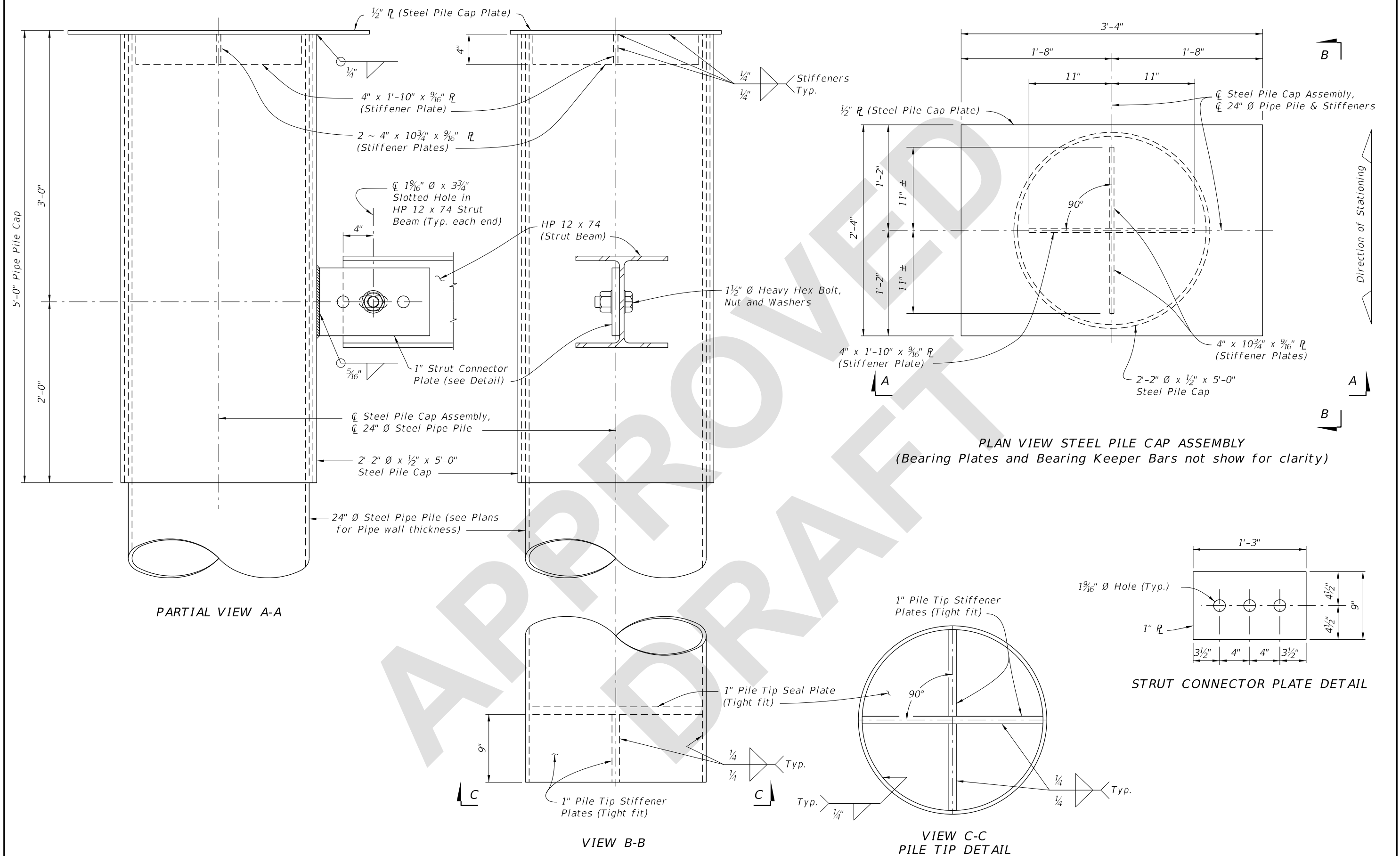
END VIEW




EXPANSION BEARING KEEPER BAR DETAIL

ABUTMENT AND INTERMEDIATE EXPANSION BEARING DETAILS
2026-27

LAST REVISION	REVISION	DESCRIPTION:	FDOT	FY 2025-26 STANDARD PLANS	TEMPORARY DETOUR BRIDGE DETAILS STEEL PIPE PILE FOUNDATIONS	INDEX	SHEET
01/01/16						102-230	3 of 3
11/01/25							



5/23/2025 12:15:47 PM

LAST REVISION 11/01/25	REVISION DESCRIPTION:	 FY 2026-27 STANDARD PLANS	TEMPORARY DETOUR BRIDGE DETAILS STEEL PIPE PILE BACKWALL BENT	INDEX 102-230	SHEET 1 of 3
------------------------------	--------------------------	--	--	------------------	-----------------



Note:
Use Shim Plates as required to provide equal bearing seat elevations across the bent. Vary thickness of Shim Plate across the pile cap plate to provide a level bearing area in the transverse direction.




FIXED BEARING DETAILS

LAST REVISION 11/01/25	DESCRIPTION: <div>  <div> FY 2026-27 STANDARD PLANS </div> </div>	TEMPORARY DETOUR BRIDGE DETAILS STEEL PIPE PILE BACKWALL BENT	INDEX 102-230	SHEET 2 of 3
------------------------------	--	--	------------------	-----------------



Note:
Use Shim Plates as required to provide equal bearing seat elevations across the bent. Vary thickness of Shim Plate across the pile cap plate to provide a level bearing area in the transverse direction.

ABUTMENT AND INTERMEDIATE EXPANSION BEARING DETAILS

LAST REVISION 11/01/25	REVISION	DESCRIPTION:	 FY 2026-27 STANDARD PLANS	TEMPORARY DETOUR BRIDGE DETAILS STEEL PIPE PILE BACKWALL BENT	INDEX 102-230	SHEET 3 of 3
------------------------------	----------	--------------	--	--	------------------	-----------------

5/23/2025 12:16:48 PM