

**Origination Form**  
 Proposed Revisions to a Standard Plans Index

|                    |                             |                         |                     |
|--------------------|-----------------------------|-------------------------|---------------------|
| <b>Originator:</b> | Taylor, Earl                | <b>Index Number:</b>    | 102-120             |
| <b>Date:</b>       | 5/16/2025                   | <b>Sheet Number(s):</b> | 2                   |
| <b>E-mail:</b>     | earl.taylor@dot.state.fl.us | <b>Index Title:</b>     | Low Profile Barrier |

**Summary of the changes:**

Sheet 2: Deleted payment note in Note 2

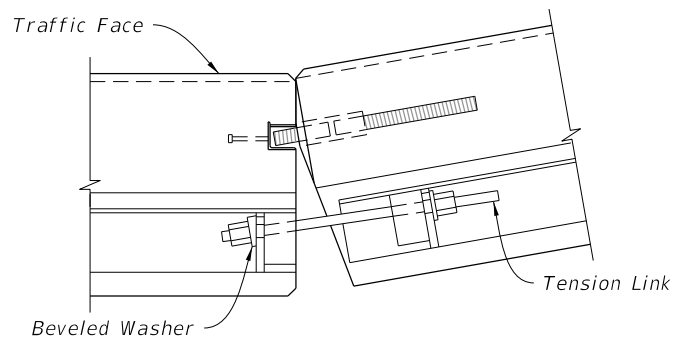
**Commentary/Background:**

Requested by D1 to fix the inconsistency between this index and index 102-100

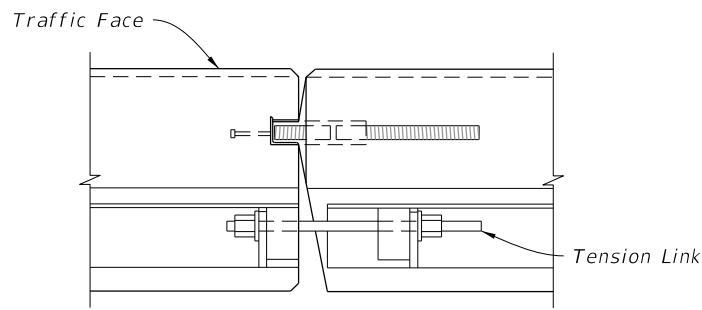
| Other Affected Documents/Offices | Person Contacted | Affected (Yes/No) |
|----------------------------------|------------------|-------------------|
| Other Standard Plans             |                  | No                |
| FDOT Design Manual               |                  | No                |
| Standard Specifications          |                  | No                |
| Basis of Estimates Manual        |                  | No                |
| Approved Product List            |                  | No                |
| Construction Office              |                  | No                |
| Maintenance Office               |                  | No                |

**Implementation**

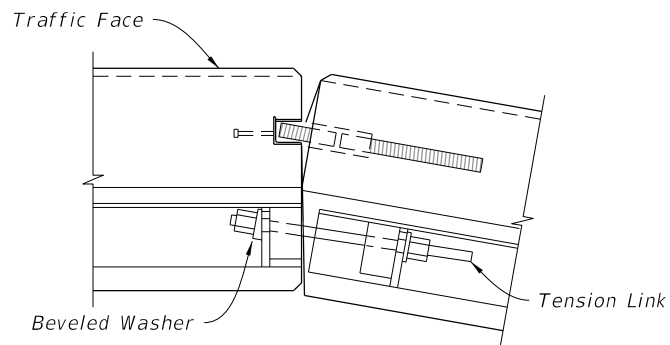
["FY-Standard Plans (Next Release)"]



CONCAVE CONNECTION

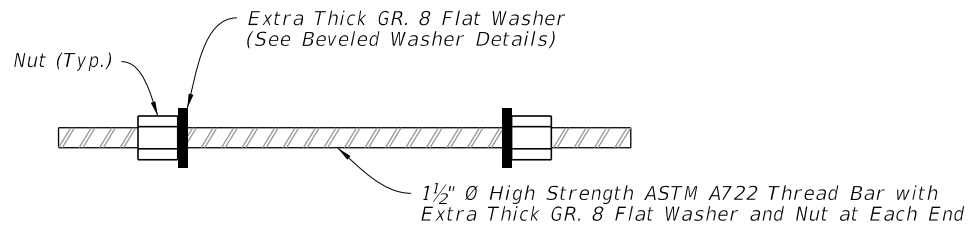


PARALLEL CONNECTION

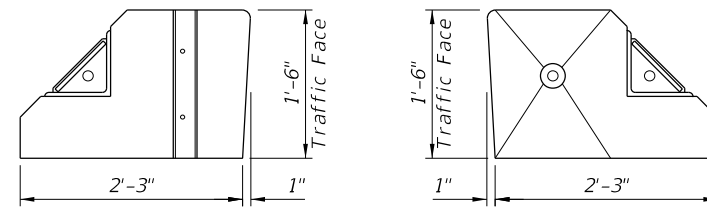


CONVEX CONNECTION

PLAN VIEWS OF CONNECTIONS



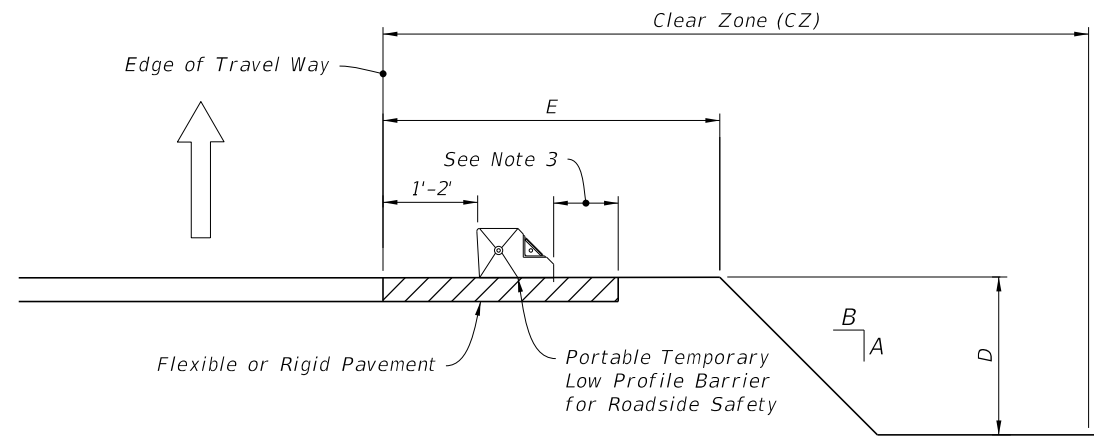
TENSION LINK DETAIL



FLAT FACE FEMALE END

BEVELED FACE MALE END

END VIEWS



SETBACK DISTANCE AT DROP-OFFS

NOTES:

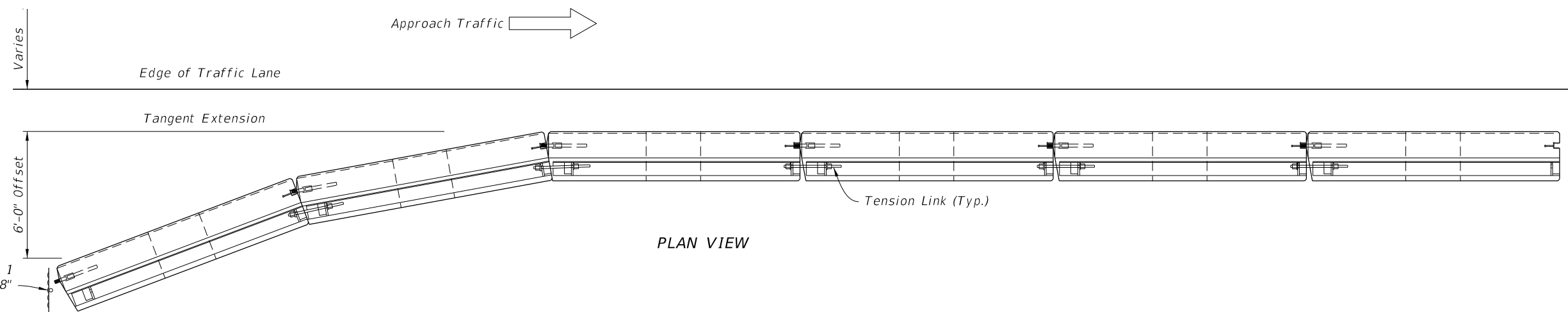
- LIMITATION OF USE: This installation technique can only be used on flexible or rigid pavement
- ASPHALT PAD: Where existing pavement is not present, construct 2" Asphalt Pad using miscellaneous asphalt pavement in accordance with Specification 339 with the exception that the use of a pre-emergent herbicide is not required. ~~Payment for asphalt pad will be included in the cost of the barrier.~~
- Minimum 9" on 1:10 or flatter slopes for 'Portable Temporary Low Profile Barrier For Roadside Safety.' For values A, B, D and E see Index 102-600.

DELETED Payment Note

SYMBOLS:

- Type I Object Marker
- Direction of Traffic

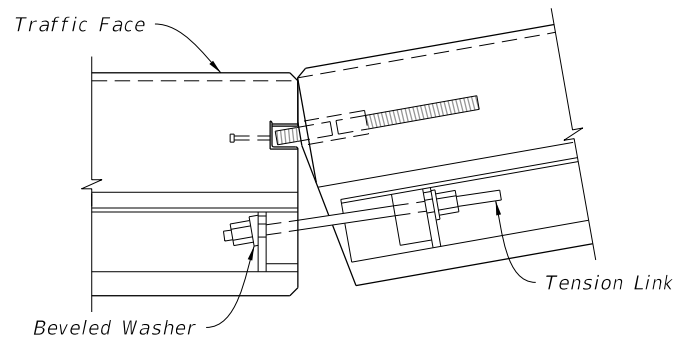
| WORK ZONE SPEED | LATERAL OFFSET       | SETBACK DISTANCE |
|-----------------|----------------------|------------------|
| 45 MPH OR LESS  | 1' MIN, 2' PREFERRED | 9"               |



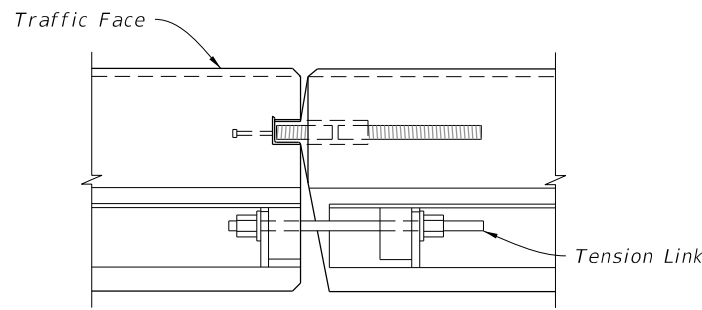
APPROACH END OFFSET

2026-27

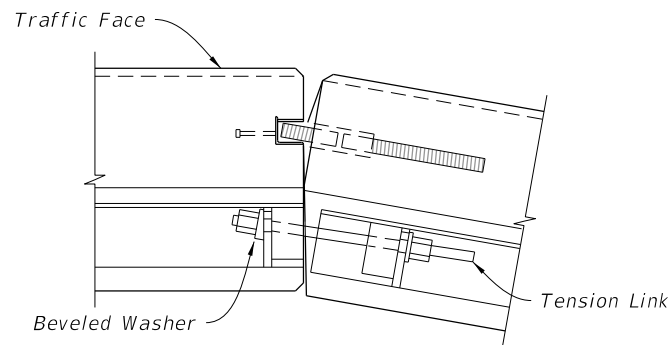
10/30/2024 2:48:42 PM



CONCAVE CONNECTION

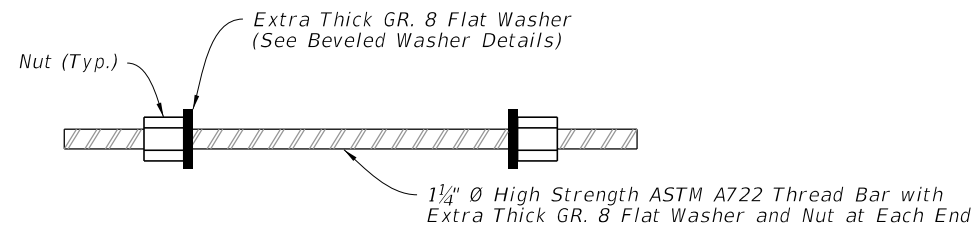


PARALLEL CONNECTION

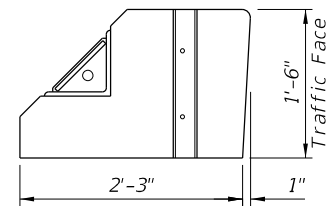


CONVEX CONNECTION

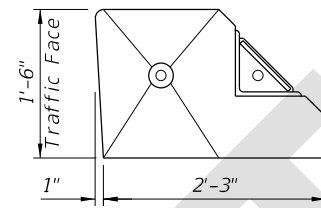
PLAN VIEWS OF CONNECTIONS



TENSION LINK DETAIL

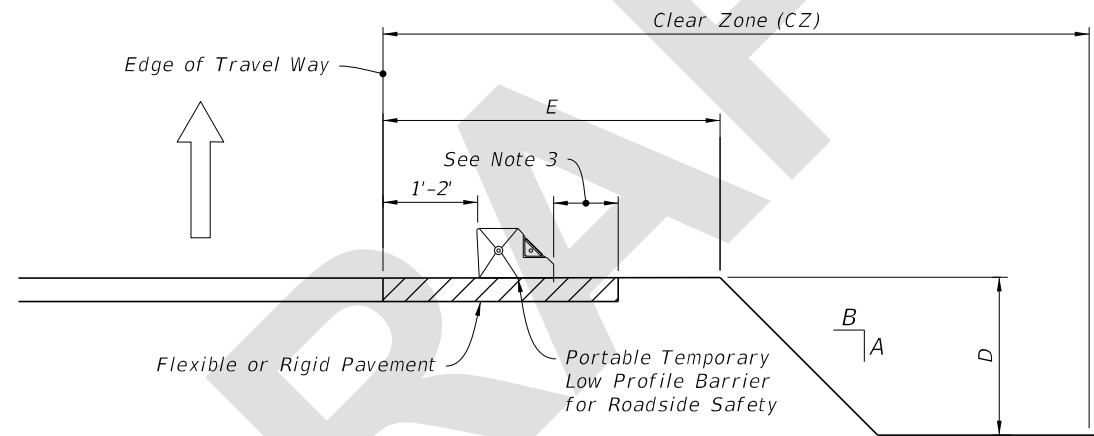


FLAT FACE FEMALE END



BEVELED FACE MALE END

END VIEWS



SETBACK DISTANCE AT DROP-OFFS

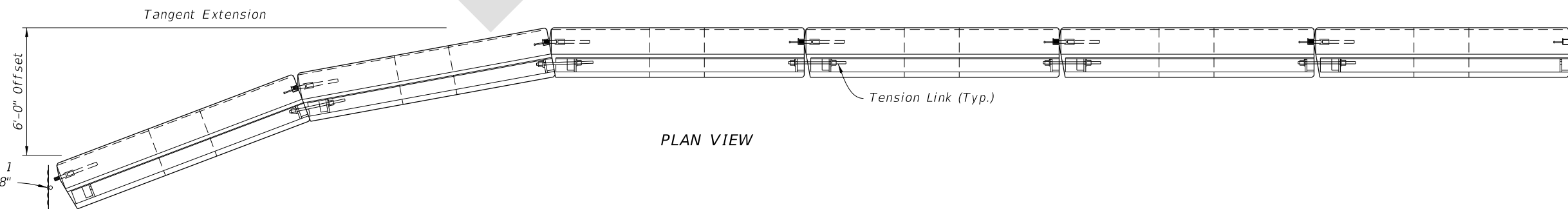
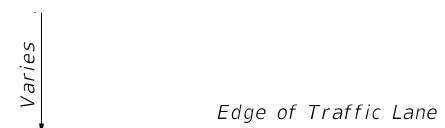
NOTES:

1. LIMITATION OF USE: This installation technique can only be used on flexible or rigid pavement.
2. ASPHALT PAD: Where existing pavement is not present, construct 2" Asphalt Pad using miscellaneous asphalt pavement in accordance with Specification 339 with the exception that the use of a pre-emergent herbicide is not required.
3. Minimum 9" on 1:10 or flatter slopes for 'Portable Temporary Low Profile Barrier For Roadside Safety.' For values A, B, D and E see Index 102-600.

SYMBOLS:

- Type I Object Marker
- ⇒ Direction of Traffic

| WORK ZONE SPEED | LATERAL OFFSET       | SETBACK DISTANCE |
|-----------------|----------------------|------------------|
| 45 MPH OR LESS  | 1' MIN, 2' PREFERRED | 9"               |



PLAN VIEW

APPROACH END OFFSET

6/26/2025 8:38:25 AM